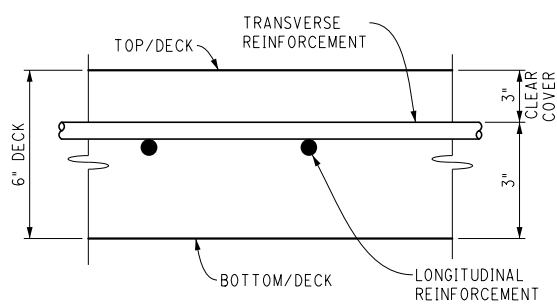


* PERPENDICULAR TO PLANE OF SLAB - NORMAL CROWN SECTION AND HIGH SIDE OF SUPERELEVATED SECTIONS

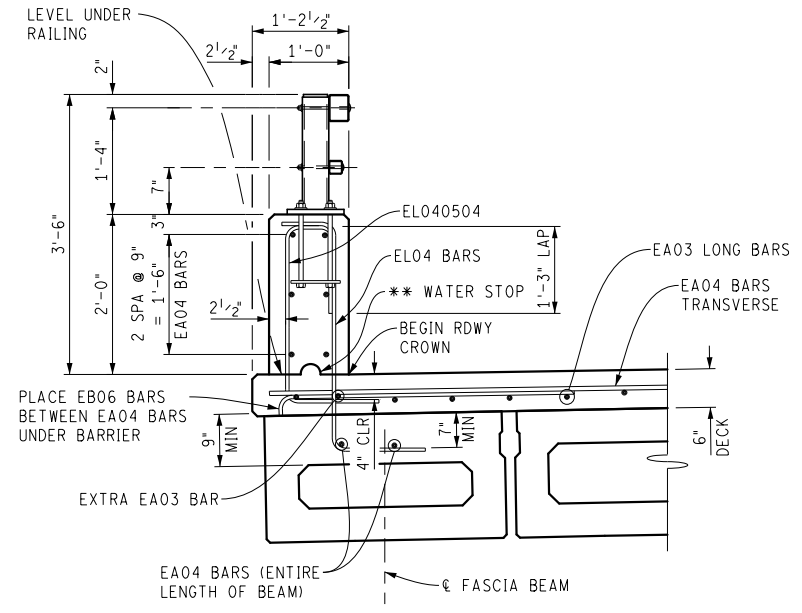
DECK SECTION
(AESTHETIC PARAPET TUBE RAILING SHOWN)



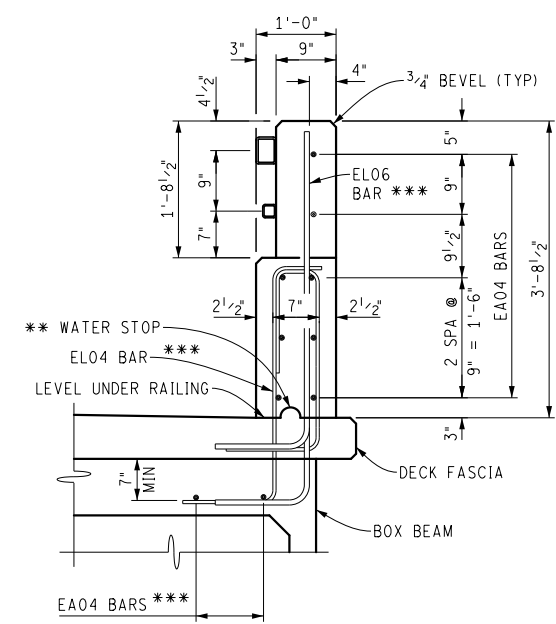
PARTIAL DECK SECTION
(LOOKING ALONG BRIDGE CONST E)

BEAM SPAN (E BRG-E BRG) (FT)	DIMENSION							
	OUT-TO-OUT "a"	CLR RDWY "b"	"c"	# OF BEAMS "d"	BEAM SIZE "e"	"f"	"g"	"h"
20	32'-6"	30'-0"	15'-0"	9	17 x 36	28'-0"	2'-3"	9"
	36'-6 1/2"	34'-0 1/2"	17'-0 1/4"	10	17 x 36	31'-1 1/2"	2'-8 1/2"	1'-2 1/2"
	42'-6"	40'-0"	20'-0"	12	17 x 36	37'-4 1/2"	2'-6 3/4"	1'-0 3/4"
30	32'-6"	30'-0"	15'-0"	9	17 x 36	28'-0"	2'-3"	9"
	36'-6 1/2"	34'-0 1/2"	17'-0 1/4"	10	17 x 36	31'-1 1/2"	2'-8 1/2"	1'-2 1/2"
	42'-6"	40'-0"	20'-0"	12	17 x 36	37'-4 1/2"	2'-6 3/4"	1'-0 3/4"
40	32'-6"	30'-0"	15'-0"	9	17 x 36	28'-0"	2'-3"	9"
	36'-6 1/2"	34'-0 1/2"	17'-0 1/4"	10	17 x 36	31'-1 1/2"	2'-8 1/2"	1'-2 1/2"
	42'-6"	40'-0"	20'-0"	12	17 x 36	37'-4 1/2"	2'-6 3/4"	1'-0 3/4"
50	32'-6"	30'-0"	15'-0"	9	17 x 36	28'-0"	2'-3"	9"
	36'-6 1/2"	34'-0 1/2"	17'-0 1/4"	10	17 x 36	31'-1 1/2"	2'-8 1/2"	1'-2 1/2"
	42'-6"	40'-0"	20'-0"	12	17 x 36	37'-4 1/2"	2'-6 3/4"	1'-0 3/4"

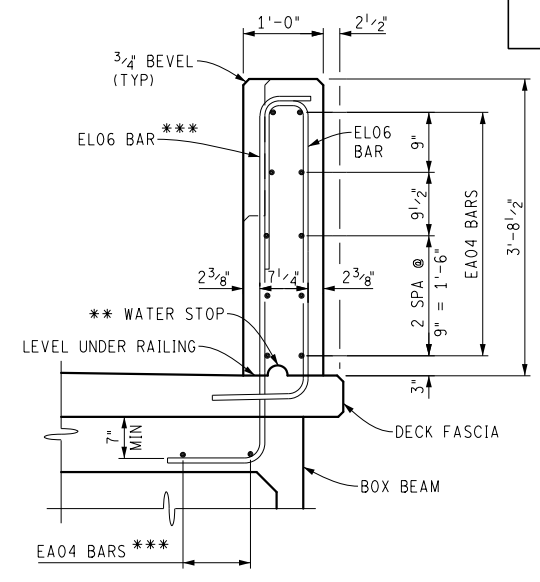
BEAM SPAN (E BRG-E BRG) (FT)	DIMENSION							
	OUT-TO-OUT "a"	CLR RDWY "b"	"c"	# OF BEAMS "d"	BEAM SIZE "e"	"f"	"g"	"h"
60	33'-9"	31'-3"	15'-7 1/2"	7	21 x 48	28'-9"	2'-6"	1'-0"
	37'-10 1/2"	35'-4 1/2"	17'-8 1/4"	8	21 x 48	32'-10 1/2"	2'-6"	1'-0"
	42'-6"	40'-0"	20'-0"	9	21 x 48	37'-0"	2'-9"	1'-3"
70	33'-9"	31'-3"	15'-7 1/2"	7	21 x 48	28'-9"	2'-6"	1'-0"
	37'-10 1/2"	35'-4 1/2"	17'-8 1/4"	8	21 x 48	32'-10 1/2"	2'-6"	1'-0"
	42'-6"	40'-0"	20'-0"	9	21 x 48	37'-0"	2'-9"	1'-3"
80	33'-9"	31'-3"	15'-7 1/2"	7	27 x 48	28'-9"	2'-6"	1'-0"
	37'-10 1/2"	35'-4 1/2"	17'-8 1/4"	8	27 x 48	32'-10 1/2"	2'-6"	1'-0"
	42'-6"	40'-0"	20'-0"	9	27 x 48	37'-0"	2'-9"	1'-3"
90	33'-9"	31'-3"	15'-7 1/2"	7	27 x 48	28'-9"	2'-6"	1'-0"
	37'-10 1/2"	35'-4 1/2"	17'-8 1/4"	8	27 x 48	32'-10 1/2"	2'-6"	1'-0"
	42'-6"	40'-0"	20'-0"	9	27 x 48	37'-0"	2'-9"	1'-3"
100	33'-9"	31'-3"	15'-7 1/2"	7	33 x 48	28'-9"	2'-6"	1'-0"
	37'-10 1/2"	35'-4 1/2"	17'-8 1/4"	8	33 x 48	32'-10 1/2"	2'-6"	1'-0"
	42'-6"	40'-0"	20'-0"	9	33 x 48	37'-0"	2'-9"	1'-3"
110	33'-9"	31'-3"	15'-7 1/2"	7	39 x 48	28'-9"	2'-6"	1'-0"
	37'-10 1/2"	35'-4 1/2"	17'-8 1/4"	8	39 x 48	32'-10 1/2"	2'-6"	1'-0"
	42'-6"	40'-0"	20'-0"	9	39 x 48	37'-0"	2'-9"	1'-3"



TYPICAL RAILING SECTION
(AESTHETIC PARAPET TUBE RAILING SHOWN)



SECTION AT END WALL
(TUBE CONNECTION AREA)



SECTION AT END WALL
(FULL CONCRETE AREA)

** 2" HIGH x 4" LONG (±), FORMING NOT REQUIRED
*** REINFORCEMENT EMBEDDED AND CAST IN PRESTRESSED CONC BOX BEAM (SEE CONC BOX BEAM DETAIL SHEET)

FOR INFORMATION ONLY:

DECK CROSS SECTION IS SHOWN WITH BRIDGE RAILING AESTHETIC PARAPET TUBE. OTHER RAILINGS ARE AVAILABLE. SEE MDOT BRIDGE DESIGN GUIDE.

THE ABOVE NOTE IS FOR INFORMATION ONLY AND SHOULD NOT BE INCLUDED ON THIS SHEET.

NOTES:

FOR SUPERELEVATED SECTIONS REFER TO MDOT DESIGN GUIDES FOR DETERMINING THE CROSS SLOPE.

CAMBER FOR FASCIA BEAMS WITH THICKER TOP FLANGE SHALL BE DESIGNED TO MATCH TYPICAL INTERIOR BEAMS AS CLOSE AS POSSIBLE. PRELOADING OF FASCIA OR TYPICAL INTERIOR BEAMS MAY BE REQUIRED IF CAMBER FROM FINISHED BEAMS VARIES SIGNIFICANTLY.

FINAL ROW PLAN REVISIONS (SUBMITTAL DATE:)						NO SCALE	DATE: 05/09/18	CS:	SUPERSTRUCTURE DETAILS SIDE BY SIDE BOX BEAM	DRAWING	SHEET	
NO.	DATE	AUTH	DESCRIPTION	NO.	DATE		AUTH	DESCRIPTION		JN:	DECK	SECT
										TSC:	006	