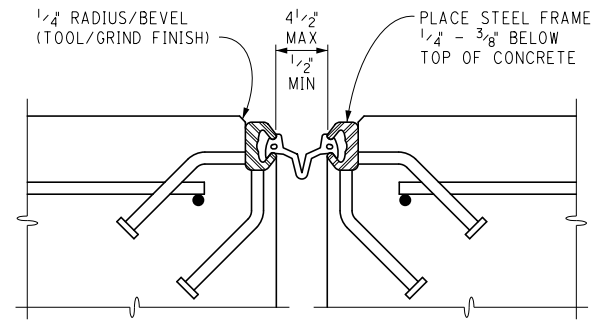
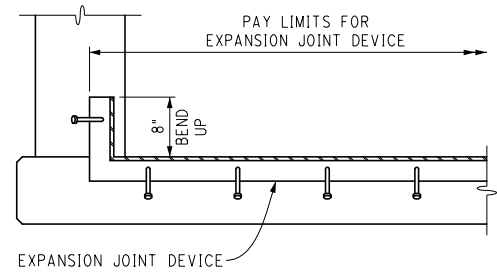


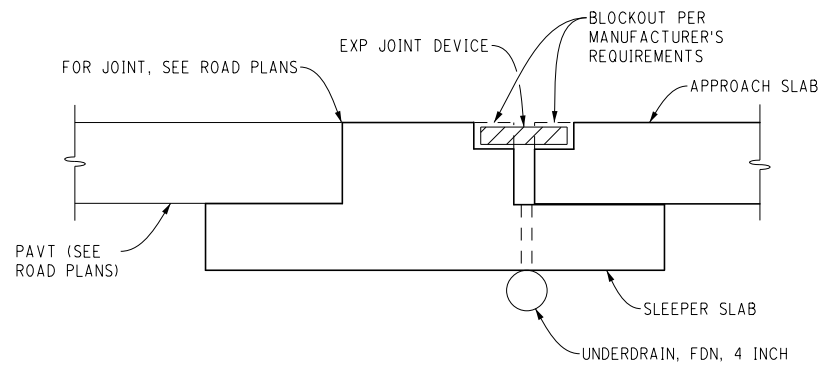
PLAN AT FLUSH MOUNT PARAPET RAILING



SECTION THROUGH EXPANSION JOINT



SECTION A-A



SECTION B-B

NOTES:

JOINT TYPES

THE EXPANSION JOINT DEVICE SHALL BE OF A TYPE THAT INCLUDES A CONTINUOUS NEOPRENE (OR EQUIVALENT) SEAL ACROSS THE DECK. UNLESS OTHERWISE NOTED ON THE PLANS, THE CONTRACTOR HAS THE OPTION OF USING ANY OF THE DEVICES LISTED BELOW:

DEVICE	MANUFACTURER
WABO STRIP SEAL - TYPE M	WATSON-BOWMAN & ACME, INC.
WABO STRIP SEAL - TYPE A	WATSON-BOWMAN & ACME, INC.
STEELFLEX-SSA2	D.S. BROWN
STEELFLEX-SSCM	D.S. BROWN
ONFLEX 40 SS	STRUCTURAL RUBBER PRODUCTS CO.
ONFLEX 40 SSA	STRUCTURAL RUBBER PRODUCTS CO.

THE MODEL OF THE JOINT TYPE SELECTED SHALL BE SUITABLE TO ACCOMMODATE THE TOTAL MOVEMENT NOTED ON THE PLANS.

COMPLETE WORKING DRAWINGS OF ALL DETAILS OF FABRICATION OF THE EXPANSION JOINT DEVICE SHALL BE SUBMITTED FOR REVIEW IN ACCORDANCE WITH STANDARD SPECIFICATION 104.02. THIS REQUIREMENT IS WAIVED FOR EXPANSION JOINT DEVICES FOR WHICH A SET OF STANDARD INSTALLATION DETAILS HAS BEEN APPROVED. STANDARD INSTALLATION DETAILS CAN BE OBTAINED FROM THE DESIGN DIVISION.

FABRICATION AND INSTALLATION

REMOVE SHIPPING BOLTS PRIOR TO PLACEMENT OF CONCRETE.

THE EXPANSION JOINT SHALL BE SHOP FABRICATED TO CONFORM TO THE CONTOUR OF THE BRIDGE DECK, BARRIERS, ETC. IT SHALL BE INSTALLED IN ACCORDANCE WITH MANUFACTURER'S RECOMMENDATIONS SUBJECT TO NOTES HEREIN AND THE APPROVAL OF THE ENGINEER.

TIE DECK REINFORCING STEEL TO STEEL FRAME ANCHORS TO MAXIMUM EXTENT PRACTICABLE WITHOUT DAMAGING GALVANIZED OR EPOXY COATINGS.

THE TOP OF THE EXPANSION JOINT DEVICE SHALL BE SET 1/4" - 3/8" BELOW THE CONCRETE SLAB (PAVEMENT).

THE STEEL ANCHORAGE FOR STRIP SEAL GLANDS SHALL BE HOT DIP GALVANIZED IN ACCORDANCE WITH SUBSECTION 707.03C.17 OF THE STANDARD SPECIFICATIONS.

THE AREA OF THE STEEL ANCHORAGE AND SEALING GLAND WHICH WILL BE IN CONTACT WITH A SEALANT, OR LUBRICANT-ADHESIVE SHALL BE CLEANED WITH TOLUENE OR OTHER APPROVED SOLVENT.

IN THE EVENT THAT SPLICING IS REQUIRED OF THE SEALING GLAND, IT SHALL BE SPLICED BY AN APPROVED METHOD (SUCH AS COLD VULCANIZATION) BY A TRAINED REPRESENTATIVE OF THE MANUFACTURER.

DETAILS AT CURBS OR BARRIERS

THE DETAILS ON THIS SHEET SHOW AN APPROVED MEANS OF TERMINATING THE EXPANSION JOINT DEVICE AT CURBS OR BARRIERS. VARIATIONS OR ALTERNATIVE SCHEMES WILL BE CONSIDERED AND MAY BE USED IF APPROVED BY THE ENGINEER.

MATERIALS

THE COST OF ALL MATERIALS AND LABOR REQUIRED FOR PROPER INSTALLATION OF THE EXPANSION JOINT AND THE TERMINAL ASSEMBLIES AT THE CURBS, SIDEWALKS, OR BARRIERS IS INCLUDED IN THE PAYMENT FOR THE EXPANSION JOINT DEVICE.

STRUCTURE NUMBER	ANGLE OF CROSSING TO NEAREST 10°	LOCATION OF JOINT	MIN. TOT. TRAVEL ALONG CENTERLINE OF BRIDGE	REQUIRED LENGTH OF EXPANSION JOINT DEVICE
		SLEEPER SLAB AT ABUT A OR B		

FOR INFORMATION ONLY:

EXPANSION JOINTS ARE NOT REQUIRED WHEN LENGTH OF BRIDGE CONTRIBUTING TO EXPANSION AT AN ABUTMENT IS LESS THAN 50 FEET FOR CONCRETE BEAM BRIDGES AND LESS THAN 25 FEET FOR ROLLED STEEL BRIDGES.

THE ABOVE NOTE IS FOR INFORMATION ONLY AND SHOULD NOT BE INCLUDED ON THIS SHEET.

FINAL ROW PLAN REVISIONS (SUBMITTAL DATE:)								NO SCALE	DATE: 05/09/18	CS:	EXPANSION JOINT DETAILS		DRAWING	SHEET
NO.	DATE	AUTH	DESCRIPTION	NO.	DATE	AUTH	DESCRIPTION							
FILE: expjt_001.dgn								DESIGN UNIT:	JN:	EXPJT	SECT	001		