

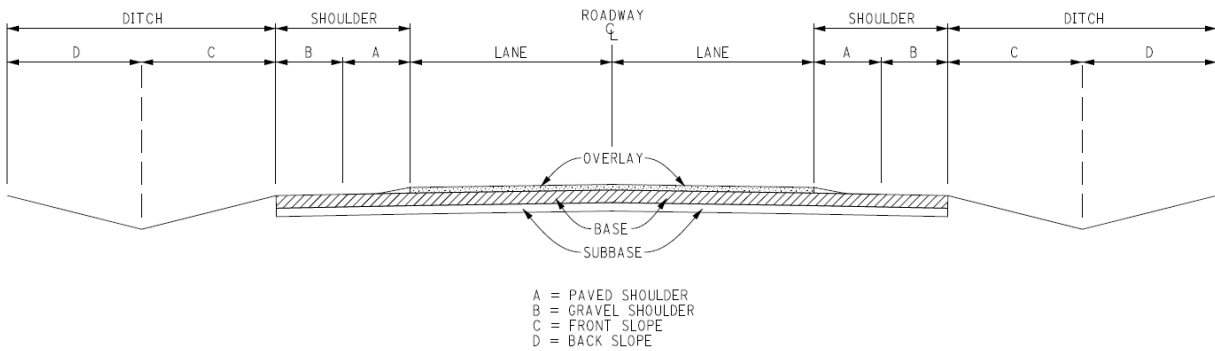
T&E Work Types Exempt from Further Review

The following work types will have no effect on state or federally listed threatened or endangered species.

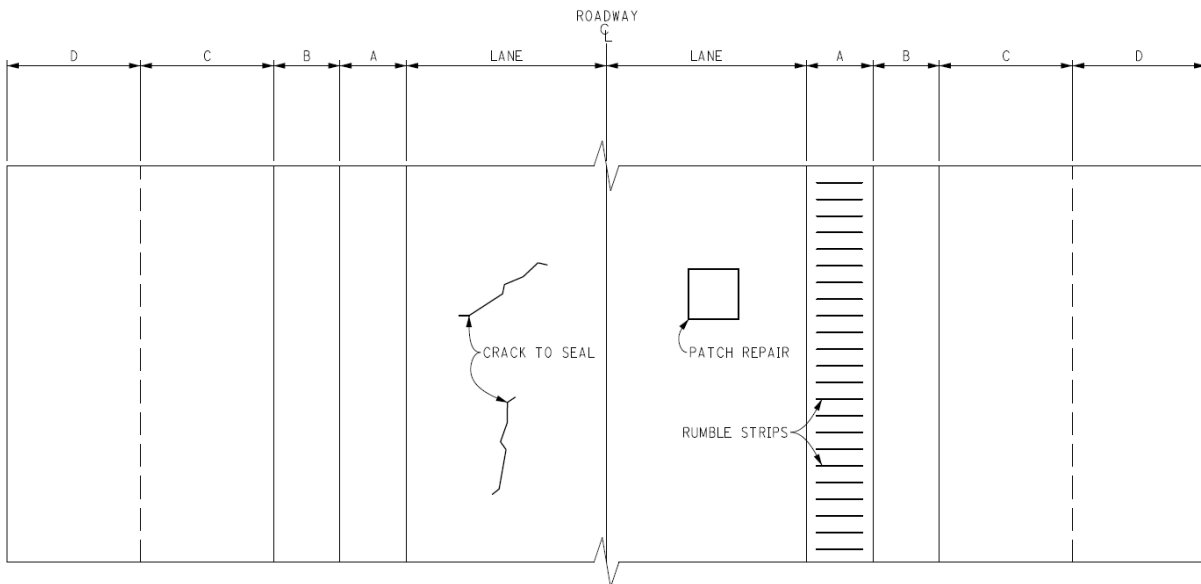
These projects are exempt from further review because they occur between existing shoulders or represent in-kind replacement of existing infrastructure with no impacts to the natural environment and therefore there would be no effect to any listed species. In addition, no equipment, vehicles, staging, spoil piles or other project related activities will occur outside the existing road shoulders.

If a project combines work types and not all are listed, then you can NOT exempt the project at this stage and further analysis is required.

ROAD



ELEVATION VIEW



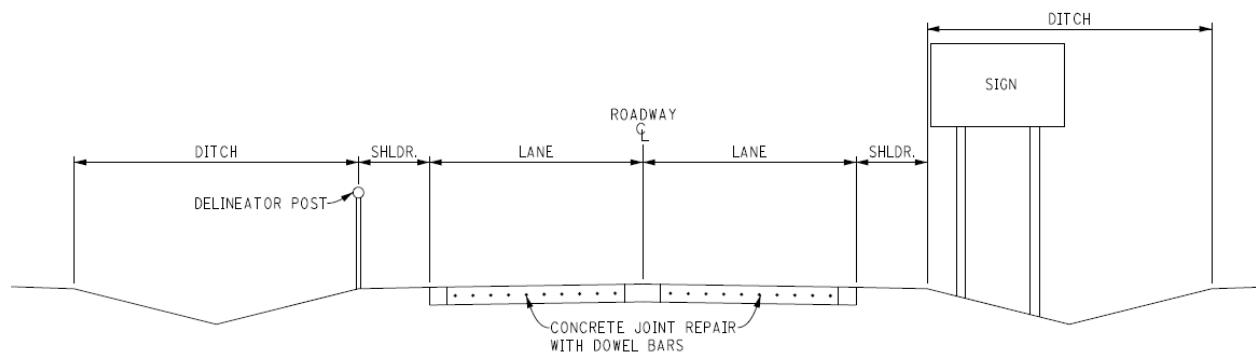
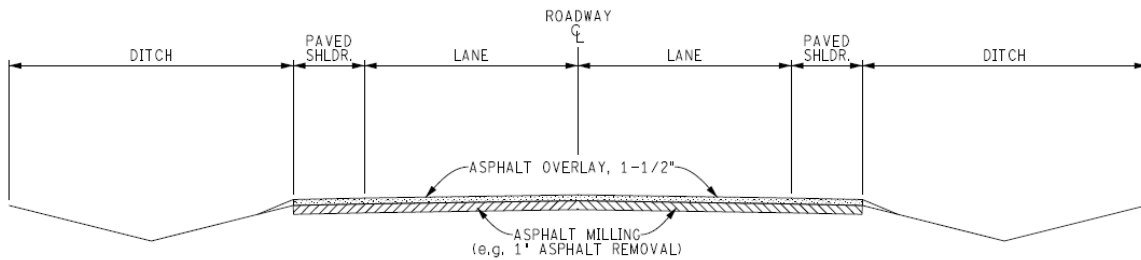
PLAN VIEW

Shoulder Work (does not include any widening)

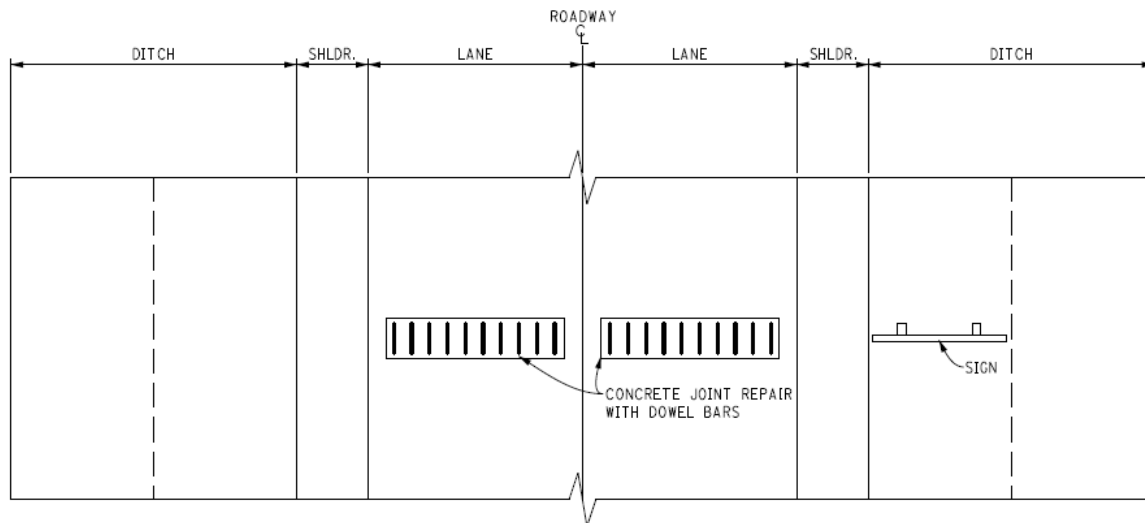
Aggregate base and shoulder material (sand or gravel) placed or regraded
Shoulder trenching - trench excavated (material is not wasted outside the shoulders) and new material placed/compacted in trench

Asphalt/HMA Work (shoulder to shoulder)

Asphalt shoulders (no widening) – paving shoulders with an asphalt/aggregate mix
Asphalt crack treatment/filling – filling cracks in existing asphalt pavement
Asphalt chipseal with pulverized stone (single or double course) – liquid asphalt base sprayed, aggregate spread on top, rolled and swept – material is not wasted outside of the shoulders
Asphalt resurfacing (slurry, micro or multi course) - paving over top of an existing pavement with asphalt/aggregate mix
Asphalt overlay (single, multi course, unbonded or ultra-thin) paving over top of an existing pavement with asphalt/aggregate mix
Asphalt overlay on composite pavement - paving over top of an existing pavement with asphalt/aggregate mix
Asphalt milling, pulverize, regrade and repave - milling off existing pavement (material is not wasted outside of shoulders), regrading, compacting and paving over top with an asphalt/aggregate mix



CONCRETE ROAD - ELEVATION VIEW

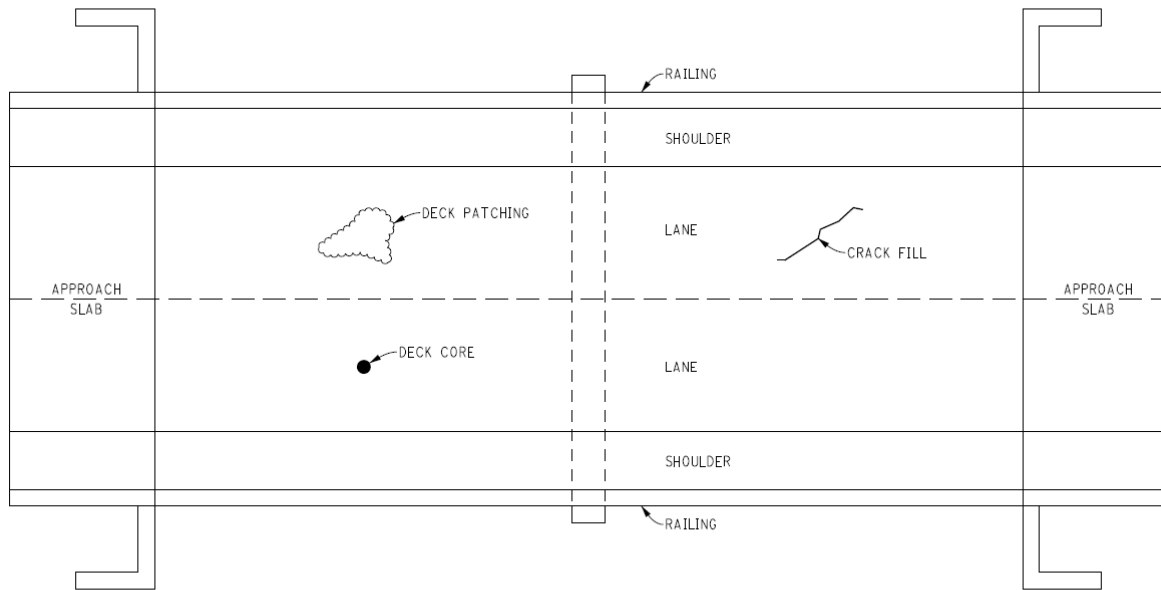


CONCRETE ROAD - PLAN VIEW

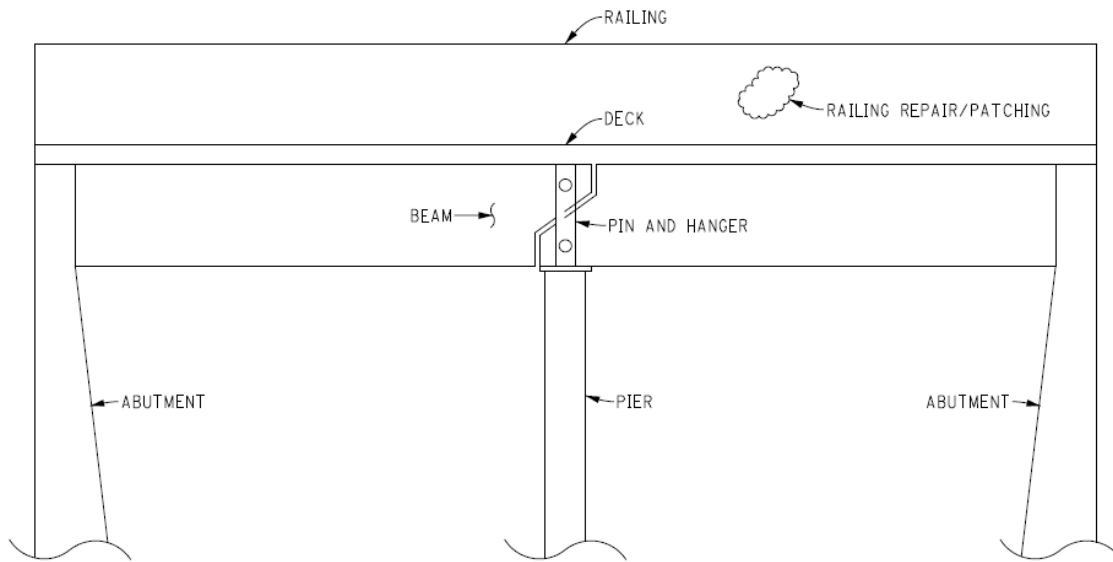
Concrete Work (shoulder to shoulder)

- Concrete shoulders (no widening) – forming and pouring concrete shoulders
- Concrete joint reseal, spall repair, crack seal – saw cutting out bad joints/areas and re-pouring concrete or filling cracks with liquid asphalt mix
- Concrete pavement inlay or overlay - forming and pouring new concrete
- Concrete pavement repair or restoration - saw cutting/removing bad areas and re-pouring concrete
- Concrete pavement rubble-ize, regrade and repave – existing concrete is crushed, may be mixed with new aggregate, regraded and new pavement placed on top
- Diamond grinding on concrete pavement - grinding to restore original profile or increase traction
- Dowel bar retrofit - cuts made into existing concrete across faulted joints, dowel bars are inserted and covered with epoxy
- Concrete patch repair or full depth repair, no widening - saw cutting out bad joints/areas and re-pouring concrete or filling cracks with liquid asphalt mix
- Sidewalk replacement – remove and replace existing sidewalk, in kind
- Sidewalk ramp replacement – remove and replace existing sidewalk ramp, in kind

BRIDGE



PLAN VIEW



ELEVATION VIEW

Bridge Work

Approach work confined to within existing shoulders (pavement work between shoulders)
Deck repairs (i.e. crack fill, overlays, patching, resurfacing, etc...) – maintenance type work to bridge deck only.

Deck cores – coring and re-pouring concrete on bridge deck

Railing repairs and some replacements (not extensions)

Miscellaneous Work

Curb and gutter at intersections (replacement, not new)

Pavement markings

Fog seals

High Friction Surface or other surface seals - liquid base applied (may be sprayed), aggregate spread on top, rolled and swept

Rumble strips – ground in (material is not wasted outside the shoulders)

Underdrain clean out

Signing (including delineators) – post holes are augered (possible poured foundation) or directly driven (operations are to be completed from roadway and/or shoulder only)

Signal installation or maintenance - no earth disturbance, mowing, or vegetation removal

Lighting installation or maintenance - no earth disturbance, mowing, or vegetation removal

Maintenance of existing dynamic message boards and weather stations - no earth disturbance, mowing, or vegetation removal