

Transportation Career Pathways Program (TCPP)

\$17.50*
per hour

The Transportation Career Pathways Program is a way to embark on a transformative career journey with the Michigan Department of Transportation (MDOT). Go the extra mile with MDOT as you explore opportunities through collaboration with professionals on real-world projects, develop practical skills, and explore diverse career paths within the transportation field.

This program provides competitive compensation, connection with industry professionals at career fairs, targeted professional development, and insights through job shadowing experiences that are all geared to build a strong foundation for your future in the transportation industry.

TCPP is tailored for individuals seeking a hands-on experience, and our immersive program offers opportunities in three tracks: Transportation Maintenance, Skilled Trades and Transportation Technician.

(See back for descriptions of tracks.)



Eligibility:

Open to individuals 18 years and older with a valid driver's license.



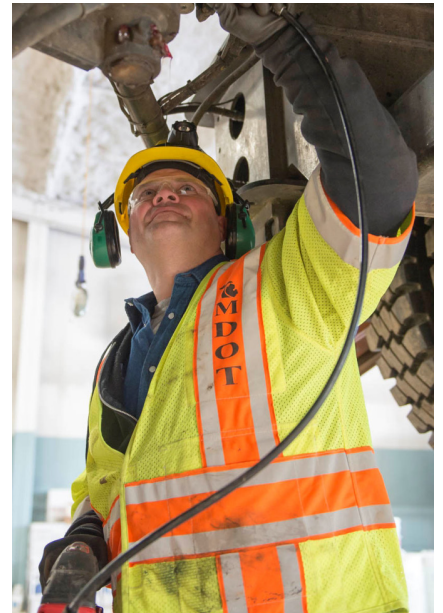
Full-Time Immersive Experience:

Immerse yourself in an opportunity of up to 40 hours per week, gaining comprehensive experience within the MDOT TCPP.



Program Timeframe:

May - September. However, you can start later if you are just getting out of school.



For more information and to explore the TCPP, visit
www.Michigan.gov/TCPP

Contact us at:

MDOT-TCPP@Michigan.gov

*Tracks available and job shadowing opportunities will vary by work area. Wage paid is a stipend and does not include paid time off or any benefits.

MDOT Graphic Design: GRAPHICS\BUREAU\SI\HIGHWAY DEVELOPMENT\PED\Workforce Development and Succession Planning Breakout Session\Transportation Career Pathways (updated 9/24 BW)



Transportation Maintenance Worker

Candidates will assist transportation maintenance workers with roadside maintenance assignments.

Duties include working with crews at regional garages to perform road and bridge work, as well as surface, structure, sign, signal, shoulder, and roadside maintenance activities.

Maintenance activities also include equipment servicing and facility and grounds maintenance.

Operates light and heavy duty equipment, vehicles and machinery to perform highway, bridge and roadside maintenance.

Maintenance of state trunklines within the right of way for an assigned maintenance garage geographic area and assisting crews with special projects such as guardrail, potholes, washouts, and tree trimming.



Transportation Technician

Candidates will cover three areas of the operations:

Permits Section: Assist with issuance of final permit inspection and archiving of completed permits. Learn tools for site operations and management of construction permits. Perform support activities, including materials testing, inspection and compliance.

Traffic and Safety: Assist with traffic mitigation efforts and construction work zone reviews. Learning about traffic control signs, pavement markings and methods to ensure safety for drivers. Learn to review traffic crash data and work zones, and provide plan review comments.

Maintenance: Assist inspecting work zone devices and learn about roadway assets and the maintenance methods. Work with soil boring crews to gather samples of subsurface soil or pavement for further testing and analysis. Participate in construction and quality control inspection activities to ensure that highways, bridges and allied transportation facilities are built to the plans and specifications.



Trades Helper

Candidates in this job assist skilled trades people with the completion of tasks in such areas as carpentry, electrical, welding, mechanics, plumbing, maintenance, masonry, etc.

Below are two examples of positions:

Assist mechanics with equipment servicing and repairs on heavy duty, light fleet, or heavy equipment. Aid in completing repair documentation and general shop cleanup and organization.

Assist electricians with electrical repairs out in the field on MDOT electrical infrastructure, including traffic signals, facilities, lighting, and roadside electrical devices. Help with traffic control setup and take down. Use hand tools and, if necessary, heavy equipment to complete jobs.