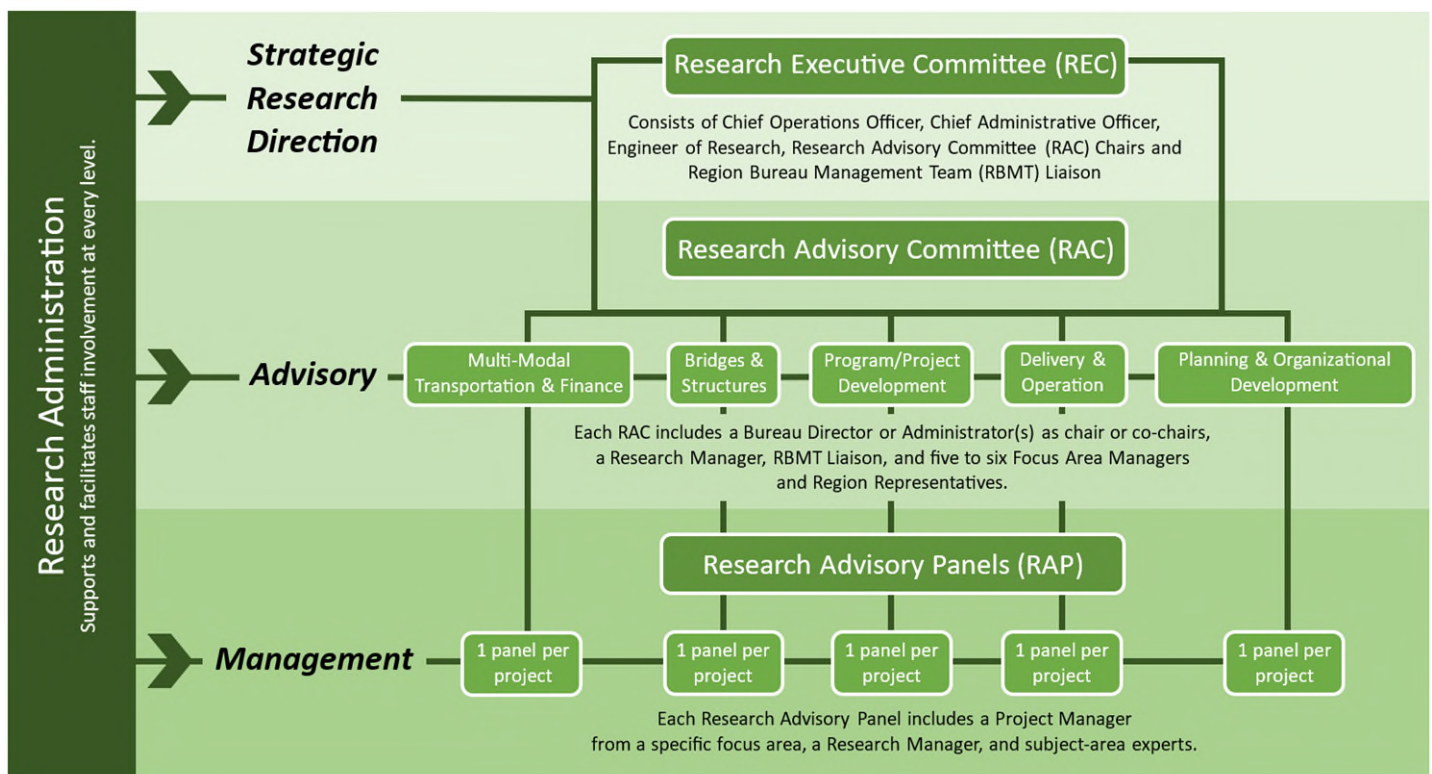


# Effective Research Management

*Working together to advance Michigan transportation*

The Research Administration Section manages research within MDOT. This includes research funded with SPR, Part II federal research dollars and state-funded research. Federally funded pooled fund research is also managed by the Research Administration Section. To most effectively carry out this responsibility, Research Administration has developed a tiered approach to identifying, prioritizing and managing research. This process ensures that department executives provide the strategic direction for research, while engaging managers and subject-area experts in the development and refinement of research ideas and problem statements. A tiered approach also involves focus area managers and subject-area experts in the management of specific research projects, which maintains alignment with strategic research priorities. Below is a listing of key staff and their responsibilities in this process.



## Strategic Direction

The REC identifies strategic priorities for the biennial research program, prioritizes research ideas, approves problem statements, approves research projects, and reviews research findings for implementation opportunities. The REC sets the tone for effective research management throughout MDOT.

## Advisory

RACs prioritize and recommend specific research ideas for REC consideration. RACs also help develop problem statements and project recommendations.

RAC members include Focus Area Managers (FAMs) who are key in all aspects of research program development and implementation. They lay the foundation for implementation by outlining the expected outcomes and benefits, ensuring a clear scope of work, and supporting strong project managers. FAMS work closely with region representatives in the Development and Delivery RACs to ensure alignment with strategic research priorities.

## Management

Research Advisory Panels (RAPs) manage the nitty gritty details of funded research projects, from vendor selection to progress reporting to deliverable review and approval. RAPs ensure that the projects run smoothly, meet the needs identified by the RACs and the REC and produce results that MDOT can consider for implementation. RAP membership typically consists of five to seven subject-area experts. The project manager for a RAP is either a FAM or a designee of the FAM.