



# REBUILDING OF I-69

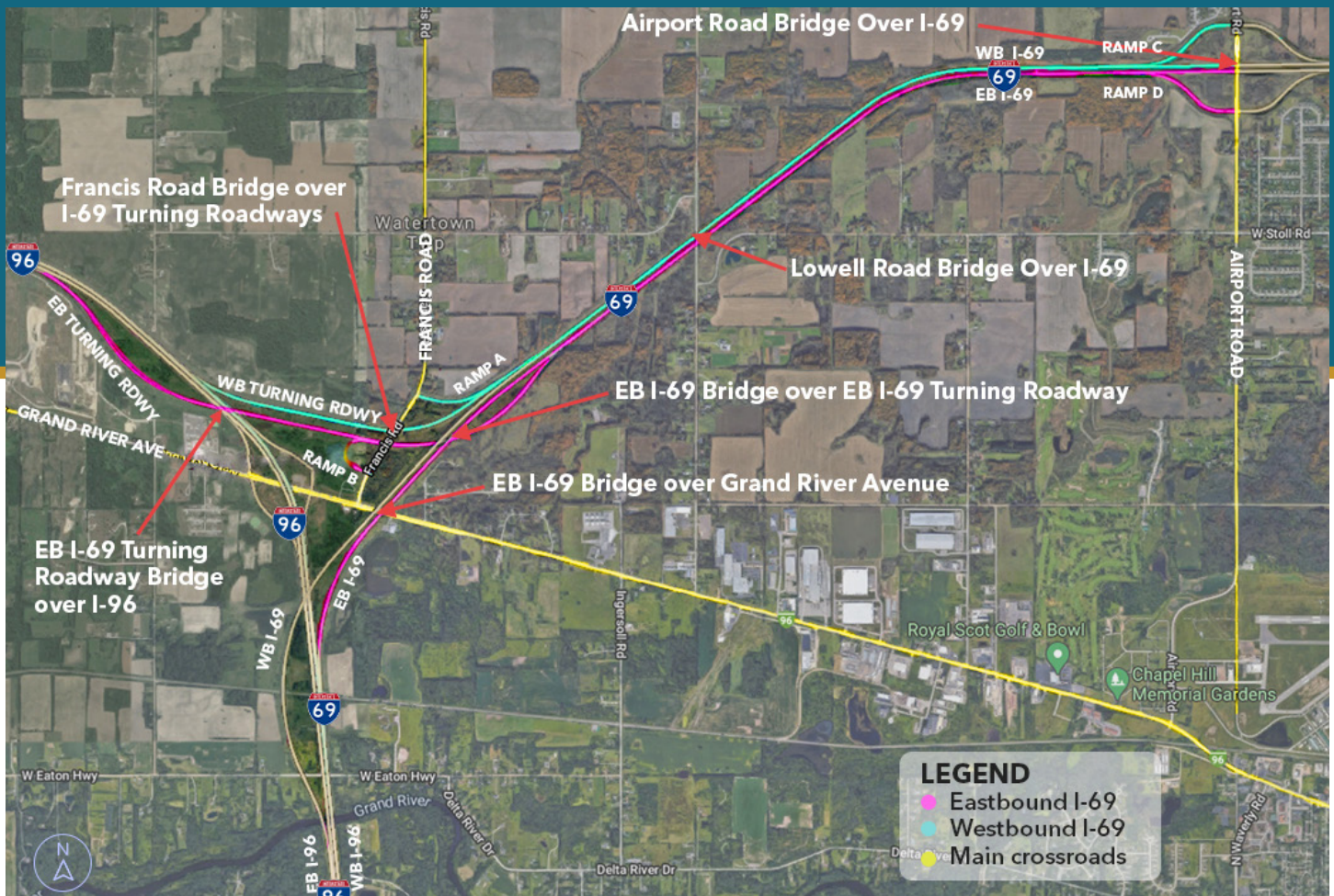
The Rebuilding I-69 project includes the reconstruction of I-69 from I-96 to Airport Road including the I-69 Turning roadways, and associated ramps at Francis Road and Airport Road. Planned repairs include roadway reconstruction of mainline pavement, drainage improvements, updates to roadway signing, pavement markings and bridge maintenance and repairs.

## 2021 Construction Plan:

- Construct temporary crossovers
- Widen shoulders for future maintenance of traffic lanes
- Reconstruct WB I-69 ramp to EB I-96
- Bridge maintenance at various locations

## 2021 Traffic Plan:

- Single lane closures on eastbound and westbound I-69 while construction operations are active for roadway widening and crossovers are constructed to maintain traffic during construction in 2022
- Through traffic on westbound I-69 ramp to eastbound I-96 will be detoured using US-127 and I-96
- Local traffic on westbound I-69 ramp will be detoured to M-100 and I-96



### 2022 Construction Plan:

- Reconstruct EB and WB I-69
- Reconstruct EB and WB turning roadways
- Reconstruct Ramps at Francis and Airport Roads
- Bridge maintenance and various locations

### 2022 Traffic Plan:

- One lane of eastbound I-69 traffic and two lanes of westbound will be maintained during the construction operations utilizing crossovers. Opposing lanes will be separated by temporary concrete barrier wall.
- Closure and detour of the eastbound and westbound I-69 turning roadways.
- Various bridge and ramp closures at Lowell, Airport and Francis Roads will have detours during construction operations
- Detours will take place in stages to minimize impacts to motorists

### 2023 Construction Plan:

- Bridge maintenance at various locations
- Remove all temporary crossovers

### 2023 Traffic Plan:

- Traffic Control on WB I-69 will entail single lane closures
- Detour Francis, Lowell and Airport roads for bridge operations
- Detours will take place in stages to minimize impacts to motorists