

M-37 PUBLIC INFORMATIONAL MEETING PROJECT OVERVIEW



M-37 Project Overview

The proposed widening extends from south of 92nd Street in the village of Caledonia to north of 76th Street where the existing M-37 widens into a four-lane boulevard in Caledonia Township.

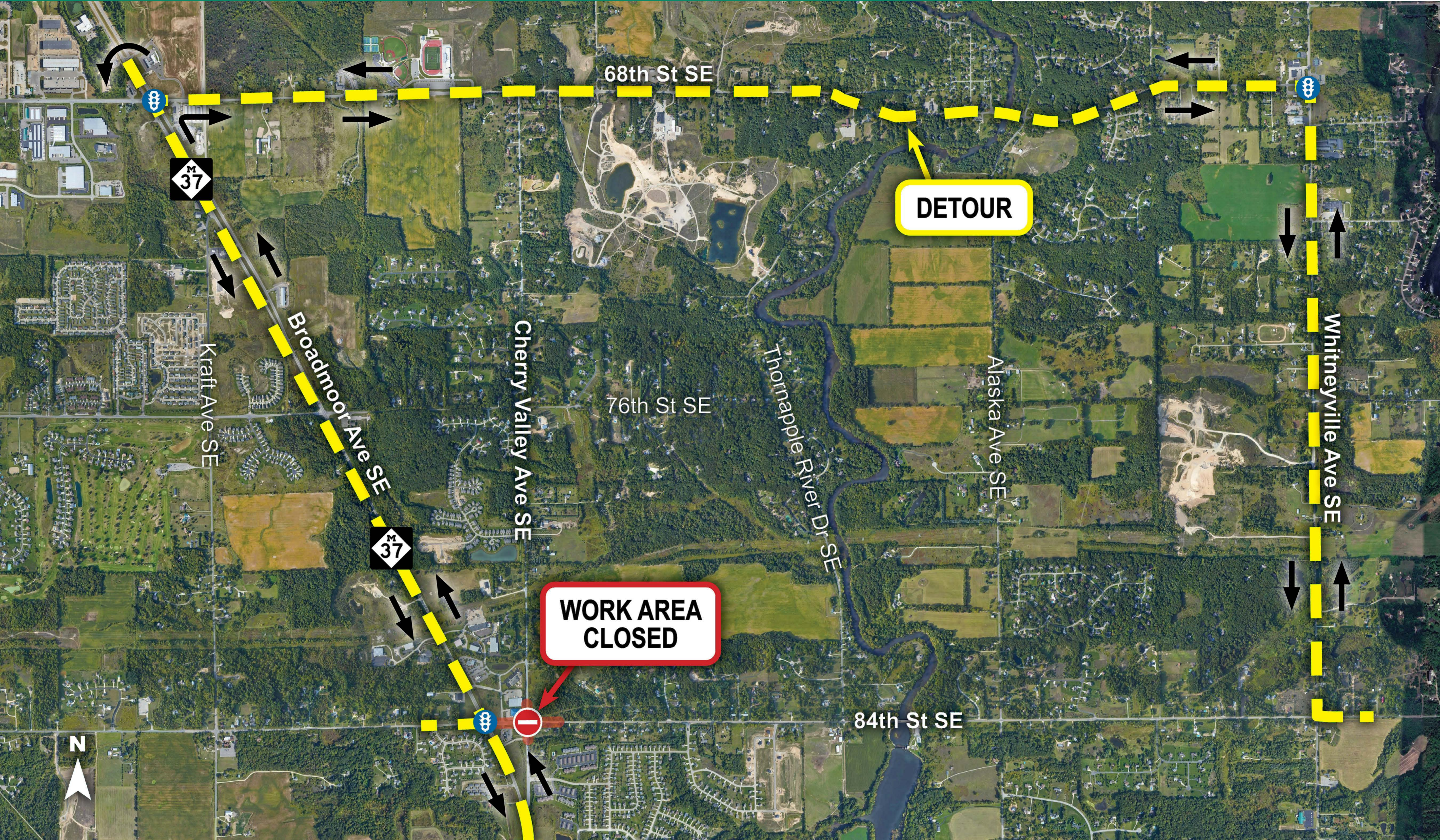


Other improvements include:

- ▶ New traffic signals at the M-37/92nd Street, M-37/84th Street, M-37/76th Street, and 84th Street/Cherry Valley Avenue intersections
- ▶ Improvements on 84th Street, Cherry valley Avenue, and 76th Street (Kent County Road Commission partnership)
- ▶ Extending the non motorized path north to Valley Point W Drive and adding sidewalks along 84th Street and 76th Street (Caledonia Township and Kent County Road Commission partnerships)
- ▶ Adding water main and sanitary services (Caledonia Township partnership)
- ▶ Replacing the Emmons Lake Drain culvert with a larger culvert

M-37 PUBLIC INFORMATIONAL MEETING

FOR EAST LEG OF 84TH STREET



M-37 PUBLIC INFORMATIONAL MEETING

FOR 76TH STREET



M-37 PUBLIC INFORMATIONAL MEETING FOR WEST LEG OF 84TH STREET



M-37 PUBLIC INFORMATIONAL MEETING CONSTRUCTION SCHEDULE



Stage 1: Spring 2026

- ▶ Maintain traffic on existing M-37.
- ▶ Clear trees.
- ▶ Begin earth work.

Stage 2: Spring/Summer 2026

- ▶ Maintain traffic on existing M-37.
- ▶ Construct the east side of M-37 from south of 92nd Street to north of 76th Street.
- ▶ Construct the east leg of 84th Street and construct Cherry Valley Avenue from mid-June to mid-August.
- ▶ Construct the east sides of other local roads with staggered schedules.

Stages 3 and 4: Summer/Fall 2026

- ▶ Maintain traffic on the new east side of M-37 from south of 92nd Street to north of 84th Street, and on the existing M-37 to the north.
- ▶ Continue constructing the east side of M-37 from north of 84th Street to north of 76th Street.
- ▶ Construct the west side of M-37 from south of 92nd Street to north of 84th Street.
- ▶ Construct the west sides of local roads from south of 92nd Street to north of 84th Street with staggered schedules.

Winter 2026-2027

- ▶ Open boulevard to traffic from south of 92nd Street to north of 84th Street.
- ▶ Maintain traffic on the new east side of M-37 from north of 84th Street to north of 76th Street.

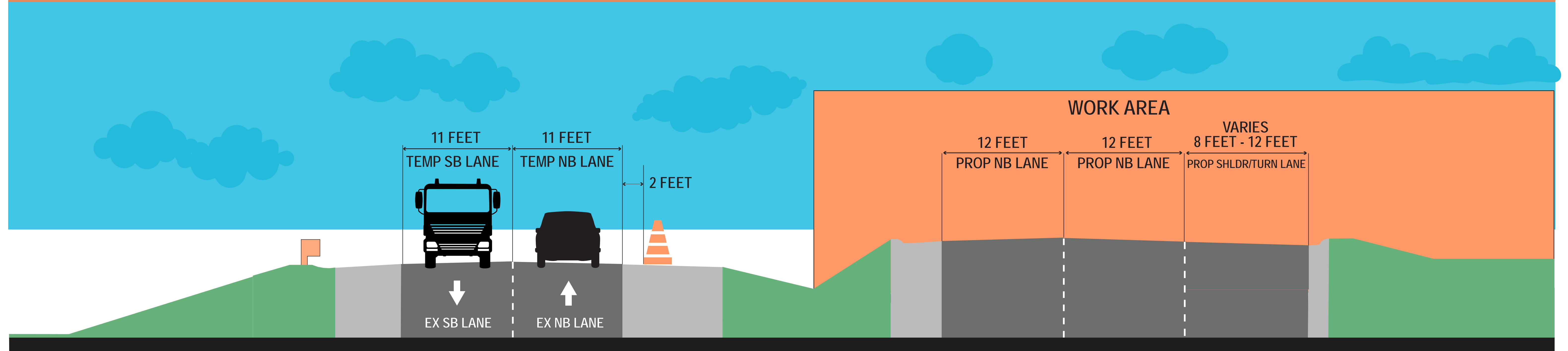
Stage 5: Spring/Summer 2027

- ▶ Maintain traffic on the new east side of M-37 from north of 84th Street to north of 76th Street.
- ▶ Construct the west side of M-37 from north of 84th Street to north of 76th Street.
- ▶ Construct the west sides of local roads from north of 84th Street to north of 76th Street.

M-37 PUBLIC INFORMATIONAL MEETING STAGE 2



SOUTH OF 92TH STREET TO NORTH OF 76TH STREET



Spring/Summer 2026, Stage 2

Maintain traffic on existing M-37.

Construct the east side of M-37 from south of 92nd Street to north of 76th Street.

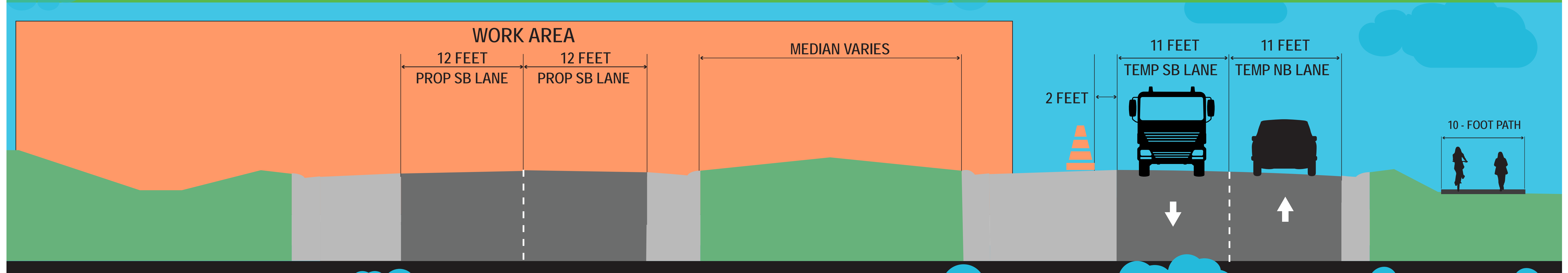
Construct the east leg of 84th Street and construct Cherry Valley Avenue from mid-June to mid-August.

Construct the east sides of other local roads with staggered schedules.

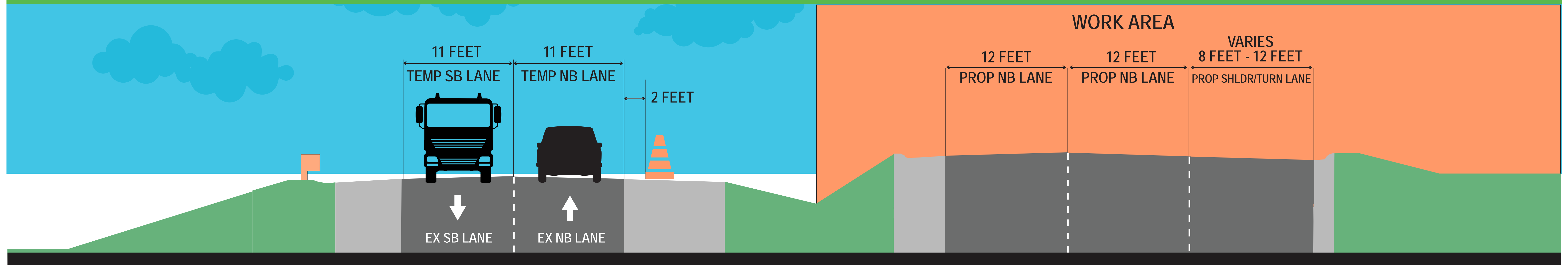
M-37 PUBLIC INFORMATIONAL MEETING STAGES 3 AND 4



SOUTH OF 84TH STREET



NORTH OF 84TH STREET



Summer/Fall 2026, Stages 3 and 4

Maintain traffic on the new east side of M-37 from south of 92nd Street to north of 84th Street, and on the existing M-37 to the north.

Continue constructing the east side of M-37 from north of 84th Street to north of 76th Street.

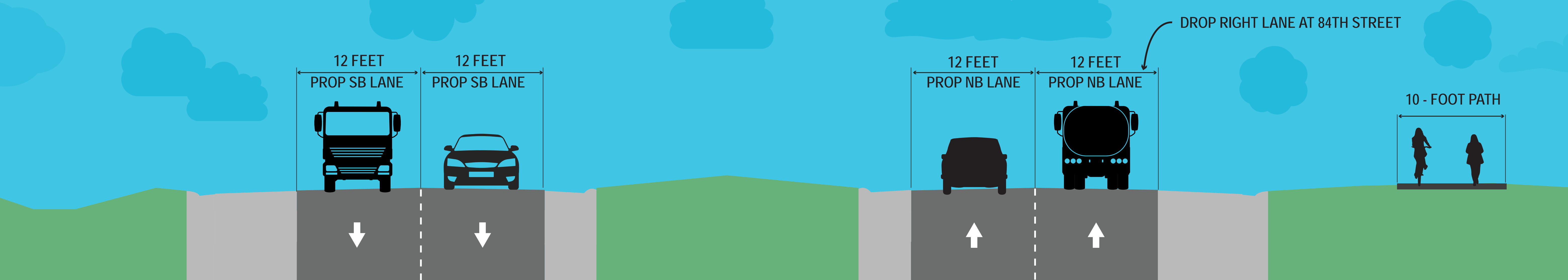
Construct the west side of M-37 from south of 92nd Street to north of 84th Street.

Construct the west sides of local roads from south of 92nd Street to north of 84th Street with staggered schedules.

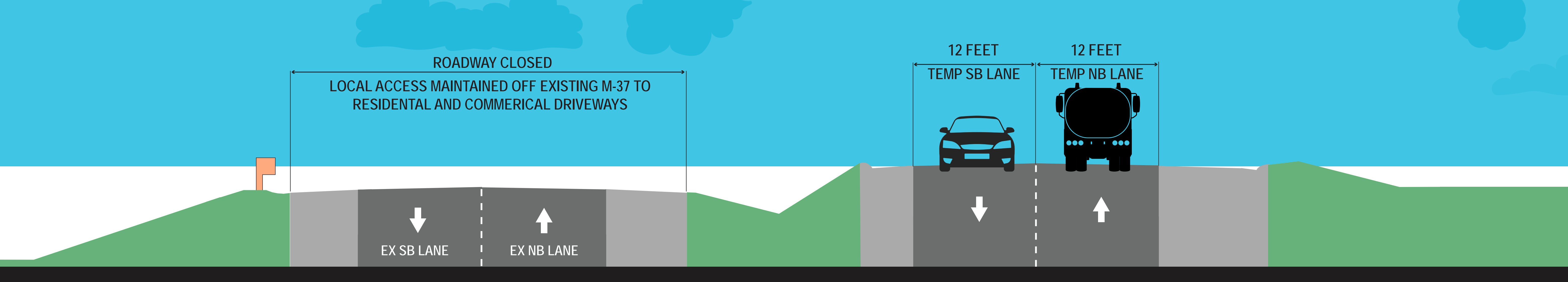
M-37 PUBLIC INFORMATIONAL MEETING WINTER



SOUTH OF 84TH STREET



NORTH OF 84TH STREET



Winter 2026-2027

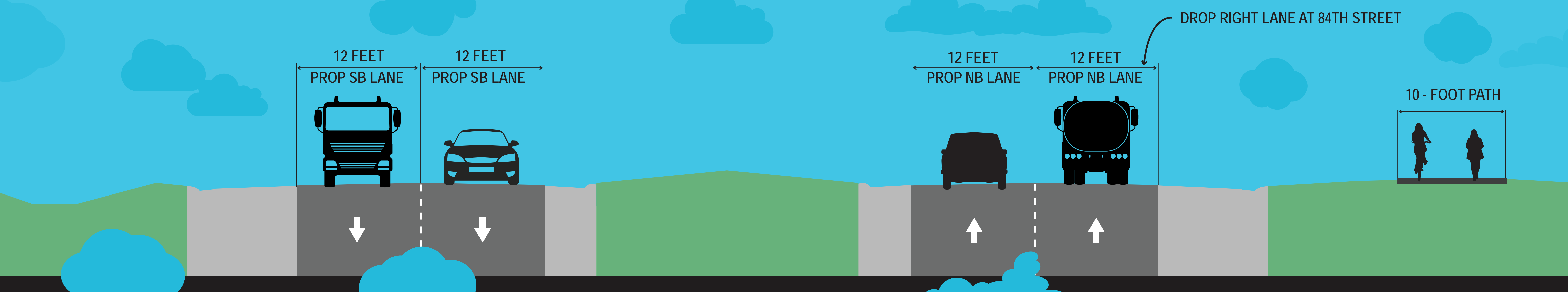
Open boulevard to traffic from south of 92nd Street to north of 84th Street.

Maintain traffic on the new east side of M-37 from north of 84th Street to north of 76th Street.

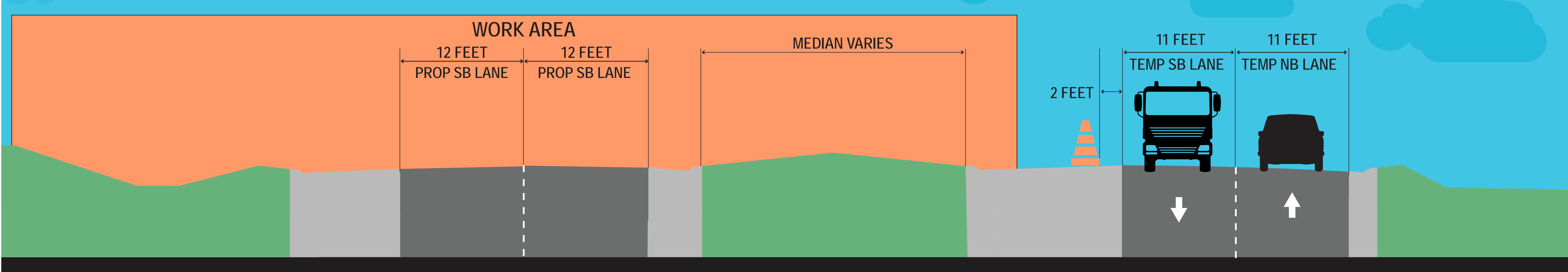
M-37 PUBLIC INFORMATIONAL MEETING STAGE 5



SOUTH OF 84TH STREET



NORTH OF 84TH STREET



Spring/Summer 2027, Stage 5

Maintain traffic on the new east side of M-37 from north of 84th Street to north of 76th Street.

Construct the west side of M-37 from north of 84th Street to north of 76th Street.

Construct the west sides of local roads from north of 84th Street to north of 76th Street.