



I-375 RECONNECTING COMMUNITIES PROJECT

2024 ANNUAL SMALL BUSINESS DEVELOPMENT CONFERENCE

March 19th, 2024

AGENDA

- 1. Welcome and Introductions**
- 2. Project Overview**
- 3. Project Delivery Method**
- 4. DBE and Workforce Development Program Goals and Objectives**
- 5. Q&A**

PROJECT OVERVIEW





Club Harlem's "Shim Sham Shimmy" chorus



Daytime in the Valley
Night in the Valley



Club Congo



Club Plantation "The Orchestra"

Richness and smoothness of modern syncopated music has been the

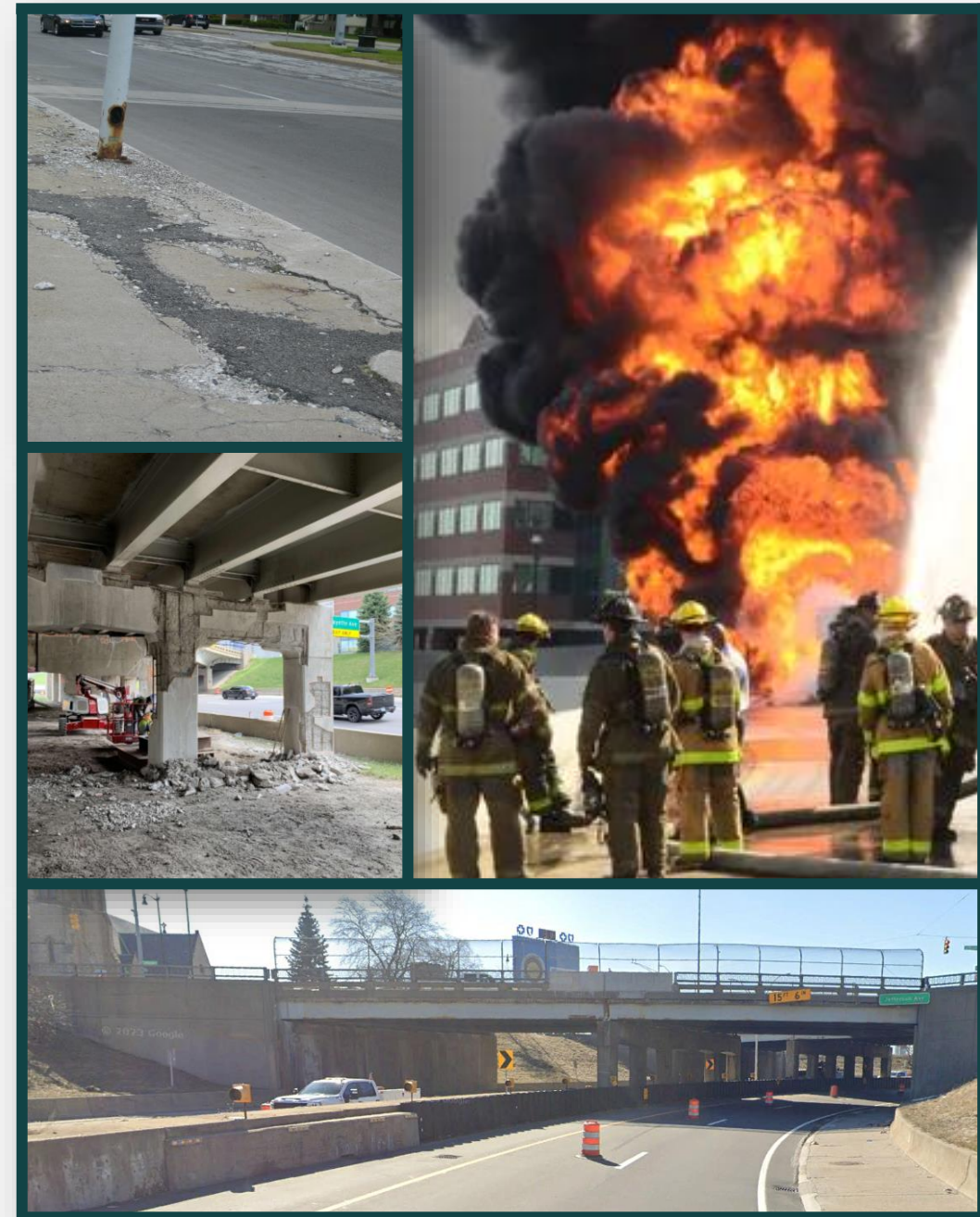
PURPOSE AND NEED

TRANSPORTATION

- Address an infrastructure need and replace the outdated interchange design, deteriorated bridges, and roadways.
- Address existing and future transportation needs and roadway safety for all users.
- Improve connectivity to surrounding areas for both vehicular and nonmotorized users.
- Enhance access to enable future development and other placemaking opportunities

MDOT'S MISSION

- Serve and connect people, communities, and the economy through transportation.



PROJECT EQUITY FOCUS



**Transportation
for All Modes**



**Small Business
Enterprise Program
and Workforce
Development**



**Community
Enhancement
Plan**



Framework Plan

PUBLIC ENGAGEMENT AND STAKEHOLDER OUTREACH

How is the project team connecting with the community?

Public Meetings
and Community
Pop-up Events

Local Advisory
Committees

Government
Advisory
Committee

Project phone
number, website,
and online
comment forms

This input will also influence the overall design, the Community Enhancements Plan, Framework Plan, and Aesthetic Guidelines.

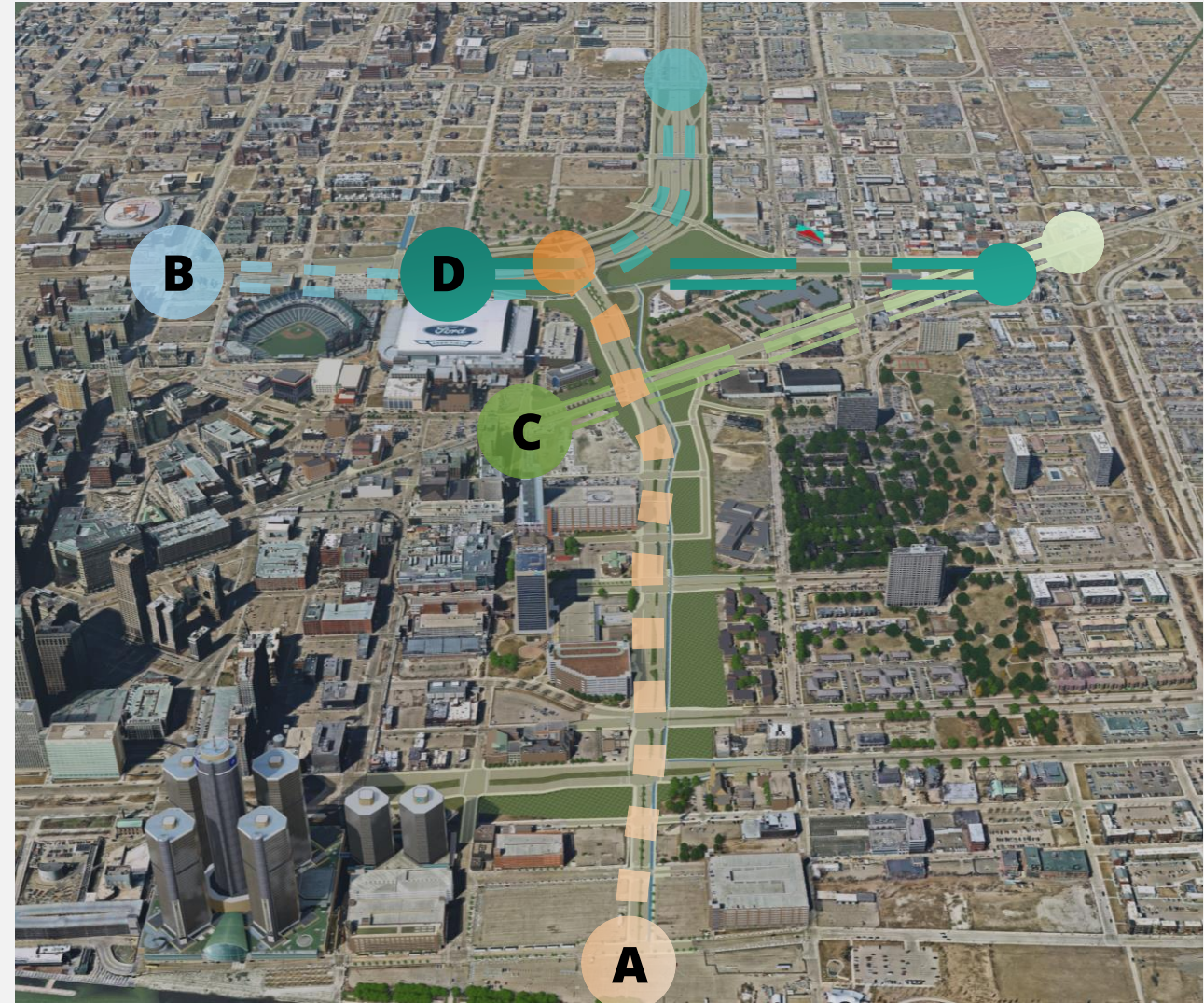
PROJECT FEATURES

Project Limits include:

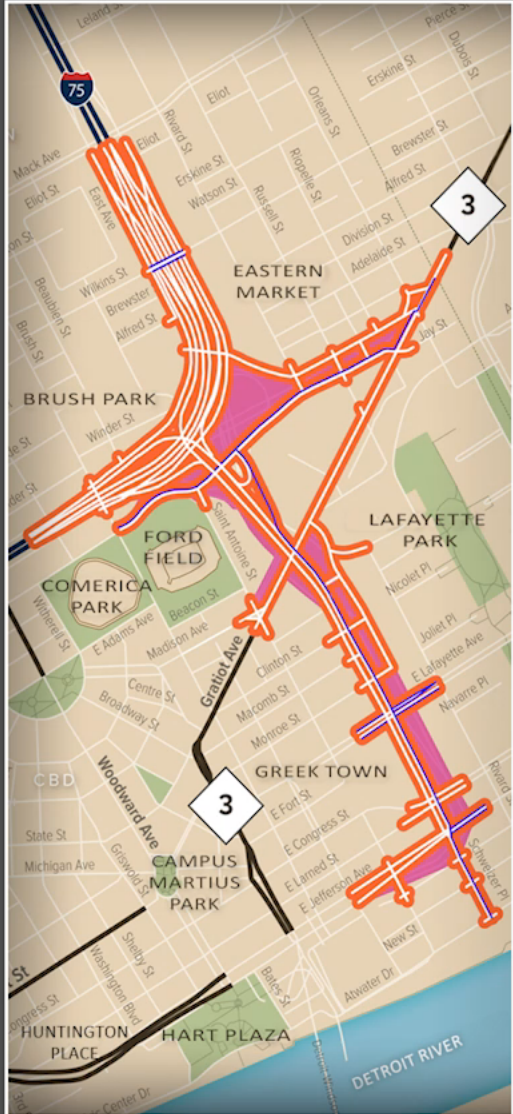
- A. I-375 from the Detroit River to the I-75 Interchange
- B. I-75 from John R St. to Mack Ave
- C. Gratiot Ave. from St. Antoine to the Dequindre Cut
- D. Existing Gratiot Connector

Benefits:

- Strengthens existing and future transportation, multimodal mobility choices, and roadway safety.
- Improves connectivity.
- Enhanced access enables future development and other placemaking opportunities with official land use and long-term economic development plans.
- Address deteriorated infrastructure, including stormwater management capacity.

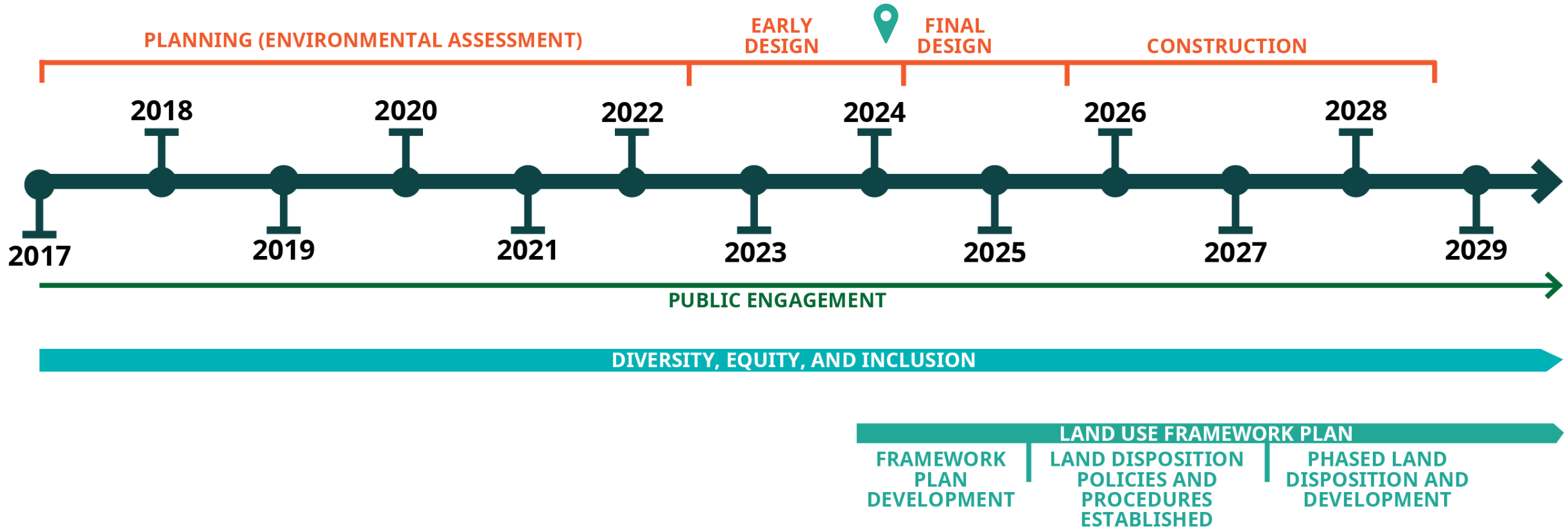


I-375 RECONNECTING COMMUNITIES PROJECT



This video begins at Mack Avenue going south on I-75 and highlights the new interchange configuration where the far right lane will be used to access the new boulevard, while you stay left to stay on I-75 South. The path follows the new boulevard down to the Detroit Riverfront.

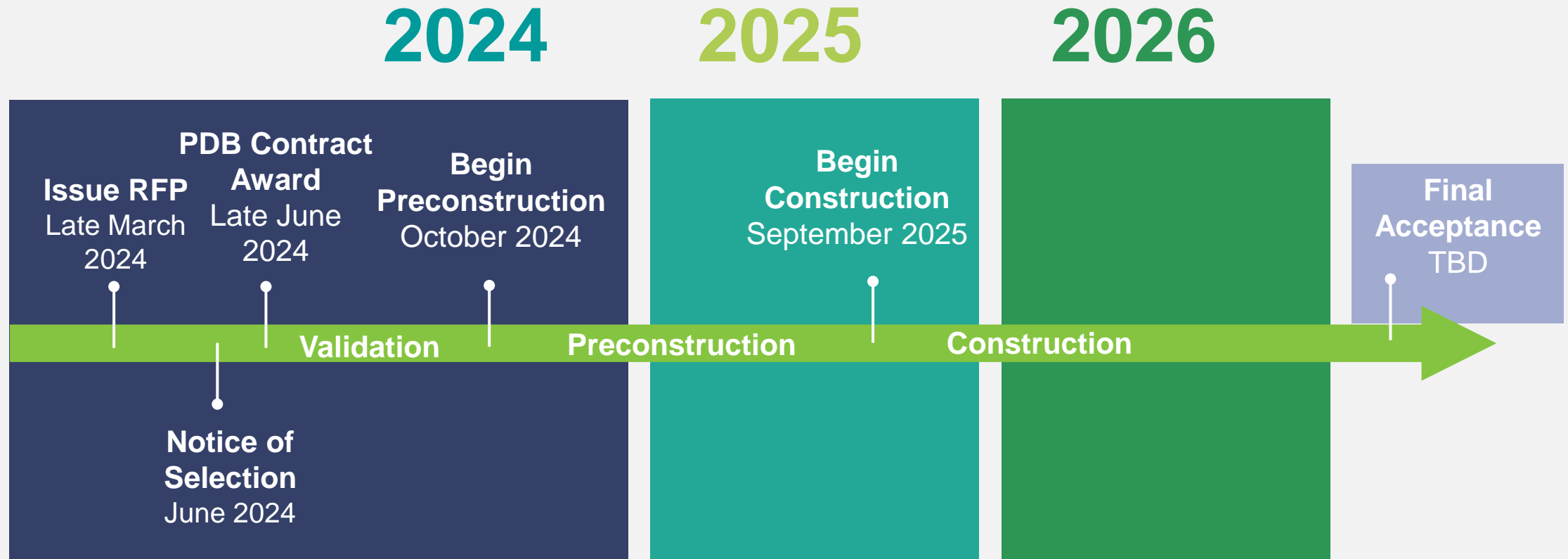
PROJECT TIMELINE



PROJECT DELIVERY METHOD



PROGRESSIVE DESIGN-BUILD SCHEDULE



DELIVERY METHOD INFLUENCERS



SCHEDULE

Support achievement of the target project schedule, including ground-breaking and completion



STAKEHOLDER INPUT

Incorporate stakeholder input and manage changes as the project develops



DESIGN & CONSTRUCTION INNOVATION

Support contractor input into design and construction approach, preserving the benefits of designer-contractor integration



TRAFFIC MANAGEMENT & WORK PACKAGING

Develop construction staging and packaging options to support efficient scheduling, mitigate interface risk, and manage traffic impacts during construction



BUSINESS & WORKFORCE DEVELOPMENT

Support maximum small and disadvantaged business participation and workforce development opportunities

PROJECT DELIVERY METHOD

Procurement and Delivery Process

Establish "Guaranteed Maximum Price"

Phase I

Phase II



DBE AND WORKFORCE DEVELOPMENT GOALS AND OBJECTIVES



DISADVANTAGED BUSINESS ENTERPRISE AND WORKFORCE DEVELOPMENT PLANNING

Now - 2025

2025 - 2028

Goal

Engage minority-owned businesses and workforce in the execution of the pre-construction, construction, and post-construction services.

Pre-construction Activities

- Disadvantaged Business Enterprise Program
- Mentor/Protégé Program
- Labor Opportunity Enhancements
- Includes outreach and development of High School, College, and Apprenticeships.
- Construction contractor and labor preparation

Construction Activities

- Project packaging and phasing to maximize opportunities
- Construction contract provisions to incentivize social, environmental, and economic equity outcomes
- Existing local business considerations
- Workforce development to eliminate barriers within the industry

PROGRESSIVE DESIGN BUILD RFP REQUIREMENTS



Disadvantage Business Enterprise (DBE) Goals

- Validation: To be determined
- Preconstruction: To be determined
- Construction: To be determined based on advanced design and construction plans

Objective is to maximize DBE firms in high-tier subcontracting positions.

On-the-Job Training Program

- Compliance with DOL's Mega Construction Project Program requirements



Key Personnel

- Project Manager
- Construction Manager
- Construction Quality Control Manager
- Design Manager
- Design Quality Control Manager
- Environmental Compliance Manager
- Lead Cost Estimator
- Lead Geotechnical Engineer
- Lead Hydraulics Engineer
- Lead Structures Engineer
- Lead Road Engineer
- Lead Traffic Engineer
- Lead Maintenance of Traffic Engineer
- Lead Utility Engineer
- Stakeholder Engagement Manager
- Equity Manager

DESIGN PREQUALIFICATION CLASSIFICATIONS NEEDED

MDOT Prequalification Description	NAICS Codes	DBE Certified Firms	Approximate Cost of Work Under Prequalification Classification
Design-Bridges	541330	4	\$3,000,000
Design-Bridges: Complex	541330	1	\$8,000,000
Design-Bridges: Load Rating	541330	2	\$800,000
Design-Roadway: Complex	541330	2	\$18,000,000
Design- Geotechnical: Advanced	541330, 541380	3	\$3,500,000
Design-Traffic: Capacity & Geometric Analysis	541320, 925120, 541611, 541330	2	\$3,500,000
Design-Traffic: ITS Design & System Manager	541330	1	\$1,000,000
Design-Traffic: Pavement Markings	237310, 541330, 541320, 925120, 541611, 237110, 541380, 541370	7	\$75,000
Design-Traffic: Safety Studies	541320, 925120, 541611, 541330	2	\$850,000
Design-Traffic: Signals	541320, 925120, 541611, 541330	2	\$750,000
Design-Traffic: Signing - Freeway	541330	1	\$150,000
Design-Traffic: Signing - Non-Freeway	541330	2	\$150,000

DESIGN PREQUALIFICATION CLASSIFICATIONS NEEDED CONT'D

MDOT Prequalification Description	NAICS Codes	DBE Certified Firms	Approximate Cost of Work Under Prequalification Classification
Design-Traffic: Work Zone Maintenance of Traffic	237310, 541330	4	\$2,500,000
Design-Traffic: Work Zone Mobility and Safety	541320, 925120, 541611, 541330	1	\$1,500,000
Design-Utilities: Municipal	541330	1	\$1,500,000
Design-Utilities: Pump Stations		NA	\$50,000
Design-Utilities: Roadway Lighting	541330	1	\$750,000
Design: Landscape Architecture		NA	\$800,000
Design- Hydraulics II	541330	2	\$5,000,000
Design-Traffic: Signal Operations - Complex	541320, 925120, 541611, 541330	2	\$500,000
Surveying: Hydraulics	237110, 541380, 541370, 541330, 237310	3	\$1,000,000
Surveying: Right of Way	237110, 541380, 541370, 541330, 237310	4	\$1,000,000
Surveying: Road Design	237110, 541380, 541370, 541330, 237310	4	\$1,500,000
Surveying: Structures	237110, 541380, 541370, 541330, 237310	3	\$1,500,000

CONSTRUCTION PREQUALIFICATION CLASSIFICATIONS NEEDED

MDOT Prequal Code	MDOT Prequalification Description	Applicable Sections of 202 Standard Specifications for Construction	NAICS Codes	DBE Certified Firms	Approximate Cost of Work Under Prequalification Classification
B	Concrete Pavement	602	237310, 238990, 238110	2	\$18,500,000
CB	Plant-Mix/Not Mix Asph/Bitumous Paving	501-504, 805, 806, 814	237310, 561730, 238990,238910,238190,237990	5	\$1,650,000
EA	Grading/Drainage Struct /Aggregate Construction	203-209, 301-303, 306, 307, 401, 403, 404	238910,237110, 238990,237310,561730, 562991,237990,238110,238190,238210, 238110, 238390, 238320, 238120, 484110,484220	23	\$107,260,000
FA	Bridges and Special Structures	701, 706, 709, 717, 813	237110, 238910,237310, 484110, 238390	3	\$91,900,000
FB	Structural Steel	707, 708	237990, 238120	2	\$6,800,000
FD	Pump Stations	405		NA	\$50,000
G	Building Moving/Demolition			5	\$20,700,000
H	Landscaping	815	111421,561730,238910,237310,237110, 238990	11	\$1,160,000
I	Seeding/Sodding/Turf Establishment	816, 818	562998,237110, 238990, 237310,561730, 238910,562991,111421,238210, 484110, 238390,484220	19	\$1,160,000
ITS	Intelligent Transportation Services		236210, 238210, 236220	1	\$9,700,000
J	Misc. Concrete Items	801-804	237110,238990,237310,561730, 238910,562991,238110,237990,238190, 238390,238320,238120, 484110,212230	25	\$7,600,000
K	Sewers/Watermains	402	237110, 238990, 237310,238910,562998,562991,237990, 484110,238390,484220,	10	\$43,400,000
L	Electrical Construction	819, 820	237110, 484220, 238910,238210,236210,236220	4	\$11,000,000

CONSTRUCTION PREQUALIFICATION CLASSIFICATIONS NEEDED CONT'D

MDOT Prequal Code	MDOT Prequalification Description	Applicable Sections of 202 Standard Specifications for Construction	NAICS Codes	DBE Certified Firms	Approximate Cost of Work Under Prequalification Classification
N2	Clearing	202	237110, 238990, 237310,238910, 561730, 484110, 238390,238910, 484220	10	\$50,000
N3	Pavement Markings	811	238190, 238910,424950, 444120,423320, 493110, 423510, 423390, 423330	1	\$670,000
N4	Bridge Painting	715, 716		2	NA
N6	Permanent Signs	810	236210, 238210, 236220,423610	1	\$2,800,000
N7	Waterproofing	710	237310, 484110, 238910, 238390,238320	3	\$58,000
N92C	Roadway-Erosion Control Structures	208		2	\$1,160,000
N93A	Pavements-Cold Milling	822		3	\$1,650,000
N93C	Pavements - Concrete Sawing	603.03		3	\$90,000
N93D	Pavements - Grinding and Grooving	603.03		NA	\$90,000
N94A	Drainage-Sewer Cleanout	402.03		1	\$430,000
N94B	Drainage-Sewer Inspection	402.03		2	\$430,000
N95C	Foundations-Pile Driving	705		NA	\$17,150,000
N95D	Foundations-Sheet Piling	704		NA	\$22,200,000

CONSTRUCTION PREQUALIFICATION CLASSIFICATIONS NEEDED CONT'D

MDOT Prequal Code	MDOT Prequalification Description	Applicable Sections of 202 Standard Specifications for Construction	NAICS Codes	DBE Certified Firms	Approximate Cost of Work Under Prequalification Classification
N96L	General-Guardrail	807		3	\$210,000
N96M	General-Fences	808		4	\$225,000
QB4	Media/Marketing Viceo Services			2	\$440,000
RC	Road Construction Cleanup			1	\$440,000
RD	Temporary Traffic Control			NA	\$27,900,000
RF	Traffic Regulator			1	\$1,400,000
RJ	Trucking heavy construction materials			68	\$7,980,000
TG	Electrical Materials Supplier			5	\$2,700,000
TH	Fence Supplier			1	\$56,000
TI	Aggregates Supplier			15	\$2,900,000
TJ	Guard Rail & Related Products Supplier			2	\$52,000

OTHER POTENTIAL SERVICES

**Towing/Auto
Maintenance**

Cleaning Services

**Trucking and
Hauling**

**Sanitation
Services (port-o-
potties)**

**Sanitation
Services
(dumpsters and
trash)**

**Video
Inspections (pre
and post
construction)**

**Material
Suppliers**

**Material
Manufacturers**

**Site and aerial
photography**

NEXT STEPS

If you are interested in working on this project:

1. [Become Certified with MDOT as a DBE firm](#)
2. [Apply for Protégé Status](#) if you want to participate in the Design
3. Inquire with MDOT on the Prequalification Process
4. Schedule an Assessment with MDOT Office of Business

Crystal Smith, Outreach and Support Services Analyst

SmithC147@michigan.gov (517) 648-6540

THANK YOU!

**I-375 PROJECT TEAM:
JONATHAN LOREE, DIVYA IYER, LESLIE LOVE
REGINE BEAUBOEUF**

MDOT-I375CORRIDOR@MICHIGAN.GOV

WWW.MICHIGAN.GOV/I375

COMMENT: BIT.LY/I375COMMENT

SUBSCRIBE: BIT.LY/I375SUBSCRIBE

CONTACT: [1-855-375-MDOT\(6368\)](tel:1-855-375-MDOT(6368))