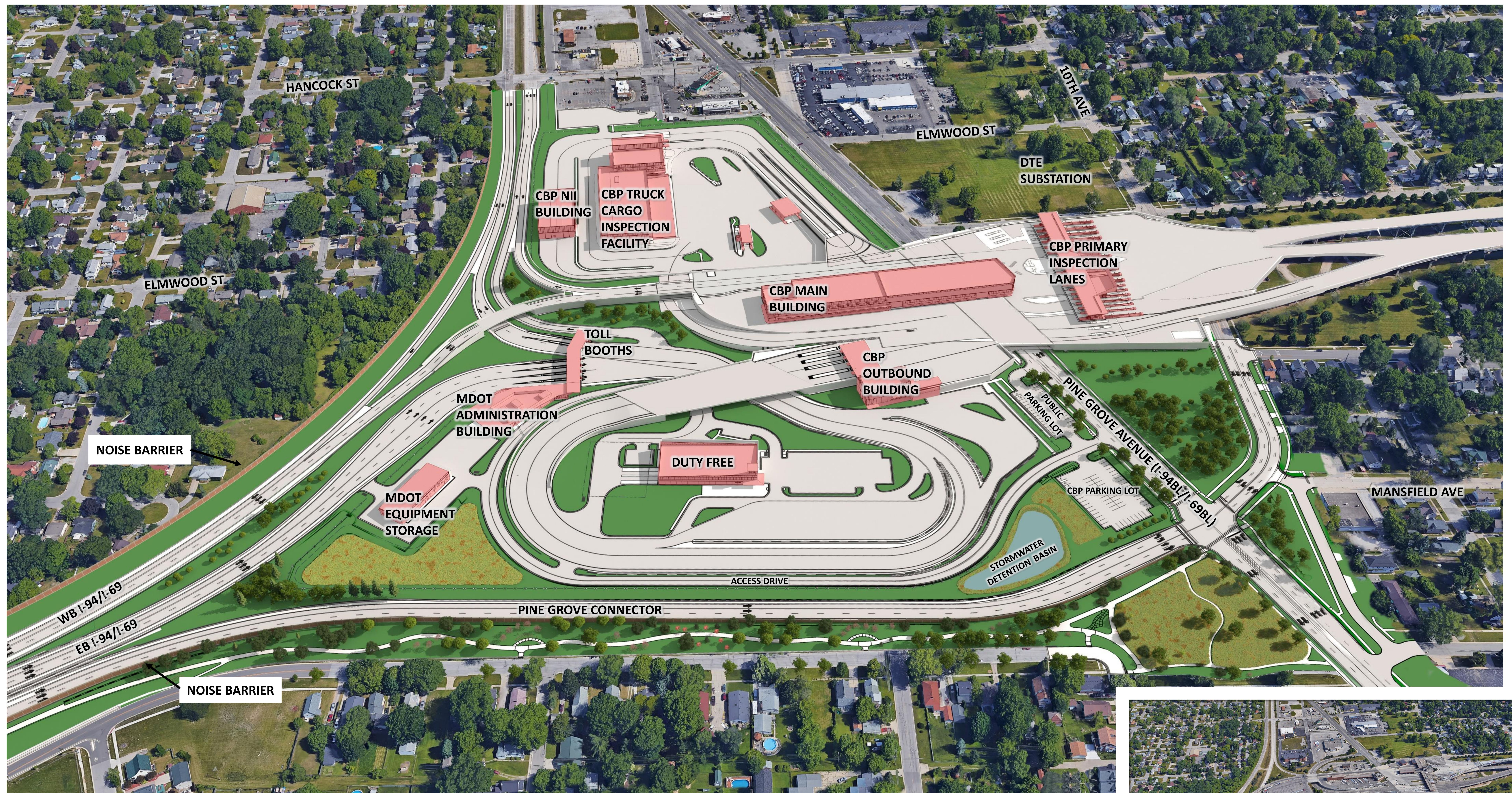


Acronyms and Abbreviations

ADA	American Disability Act	GOV	Government
APHIS, VS	Agriculture, Animal and Plant Health Inspection Service – Veterinary Services (U.S. Department)	GSA	General Services Administration
AQI	U.S. Agricultural Quarantine and Inspection	HABS	Historic American Buildings Survey
BWB	Blue Water Bridge	HAER	Historic American Engineering Record
CBP	Customs and Border Protection	INFRA	Infrastructure for Rebuilding America
CITES	Convention on International Trade in Endangered Species	IT	Information Technology
COV	Commercial Operator Vehicle	LEED	Leadership in Energy and Environmental Design
DB	Design-Build	LP	Lease Prospectus
DEIS	Draft Environmental Impact Statement	LPOE	Land Port of Entry
DHS	Department of Homeland Security	MDOT	Michigan Department of Transportation
EIS	Environmental Impact Statement	MOT	Maintenance of Traffic
FAST	Free and Secure Trade	MSE	Mechanically Stabilized Earth
FDA	U.S. Food and Drug Administration	MSP	Michigan State Police
FHWA	Federal Highway Administration	NEPA	National Environmental Policy Act
FIS	Federal Inspection Service	NII	Non-Intrusive Inspection
FS	Feasibility Study	PACs	Protective Action Criteria
FWS	U.S. Fish and Wildlife Service	POR	Program of Requirements
		POV	Privately Operated Vehicle
		RFP	Request for Proposal
		ROD	Record of Decision
		ROW	Right of Way
		TCIF	Truck Cargo Inspection Facility
		USA	United States of America
		USDA	U.S. Department of Agriculture
		VACIS	Vehicle and Cargo Inspection System
		WBCA	Wild Bird Conservation Act

Bird's-Eye View of Plaza Looking North



Proposed View

Existing View



NOTE: Aesthetics and noise wall details are for example only and are subject to change.

2nd View of Plaza Looking North



Proposed View

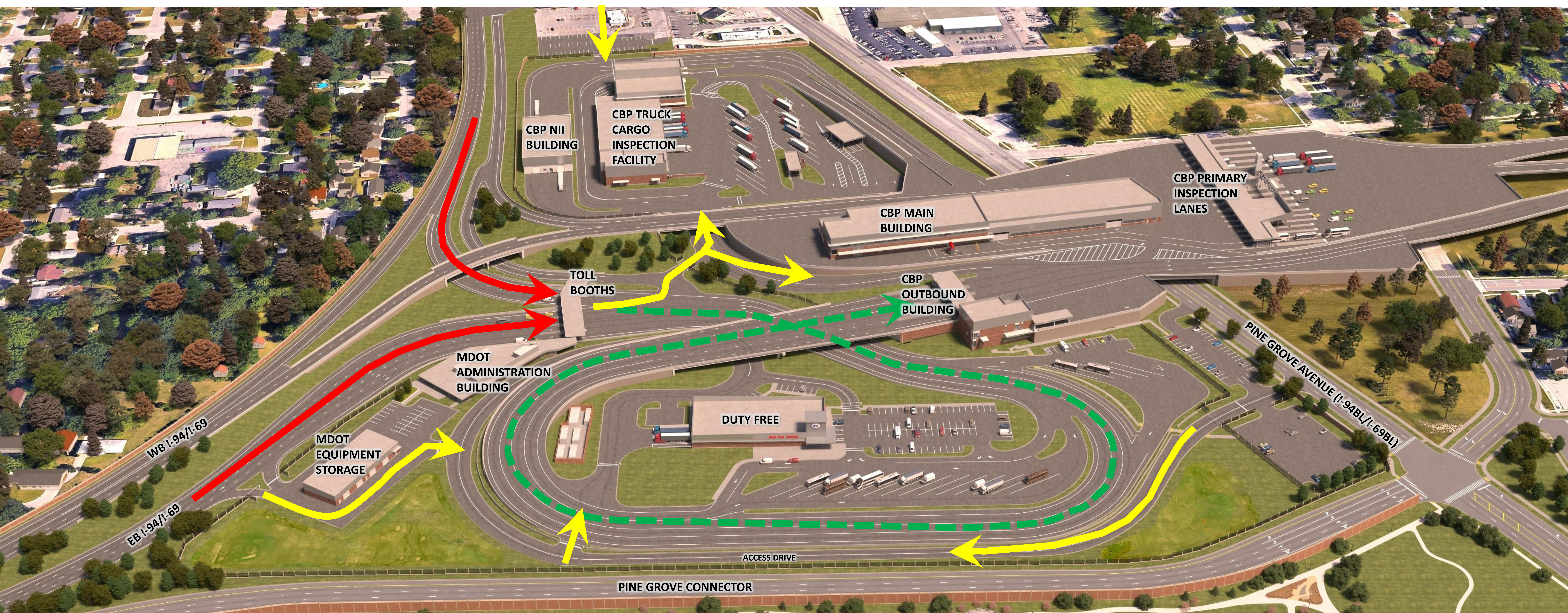


Existing View

NOTE: Aesthetics and noise wall details are for example only and are subject to change.

Traffic Circulation

- ➔ Traffic to be controlled at the toll booths
- ➔ Congestion within the looped roadway to be limited
- ➔ Multiple emergency access point



2022 Re-evaluation



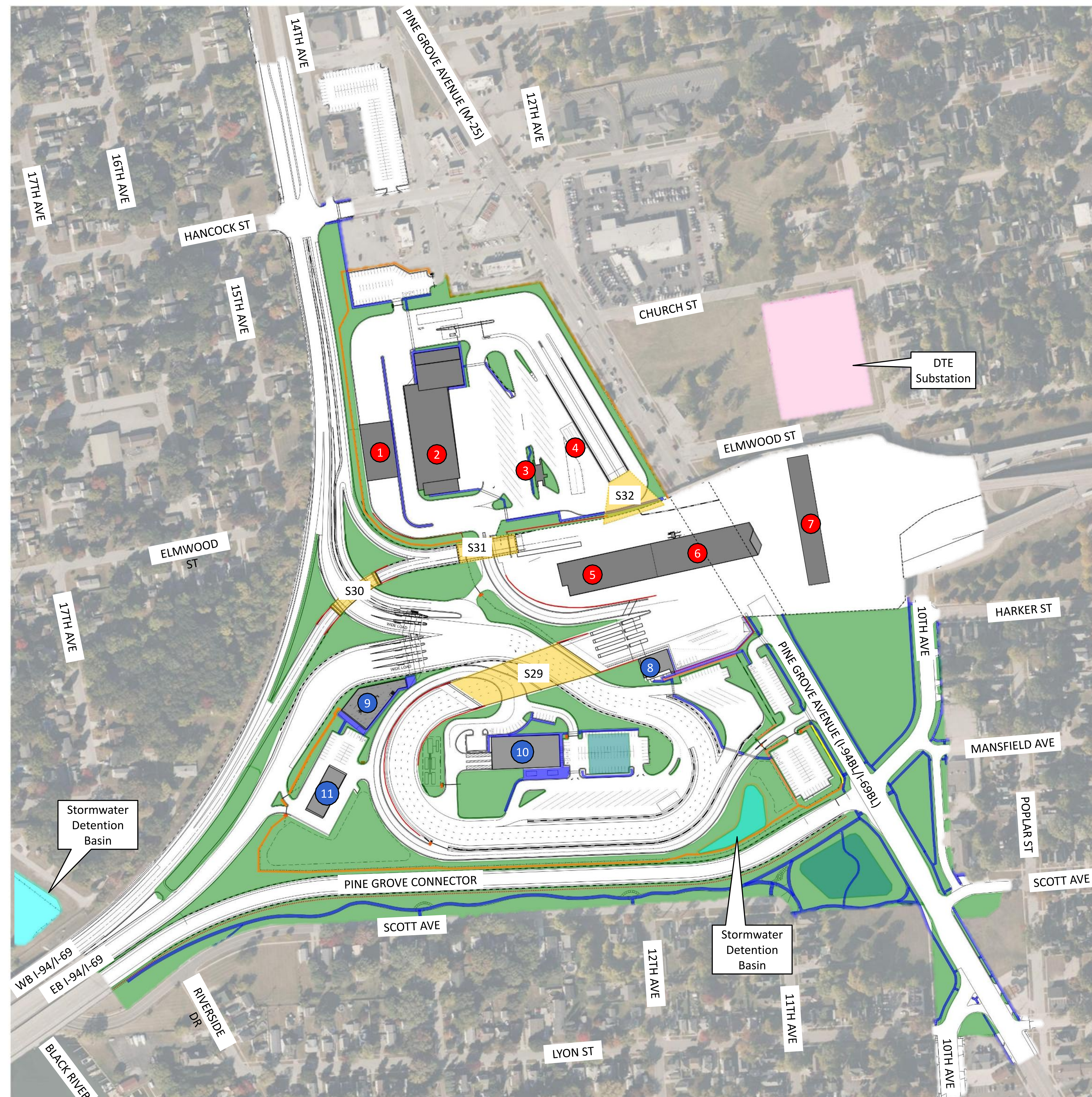
Environmental Update:

On July 6, 2023, the Federal Highway Administration (FHWA) concurred with the re-evaluation of the Environmental Impact Statement for the Blue Water Bridge (BWB) expansion project in accordance with 23 CFR 771.129(c). The concurrence allows MDOT to proceed with design and construction of the 2022 Refined Alternative of the BWB Expansion Project.

Updated Environmental Reports:

- Re-evaluation of the Final Environmental Impact Statement for the BWB expansion project
- Air Quality Technical Report
- Ecological Technical Report
- Project Area Contamination Survey
- Aesthetics Design Guide Addendum
- Technical Report Interchange Access Change Request
- Noise Analysis Addendum
- Final BWB Plaza Traffic Analysis Report

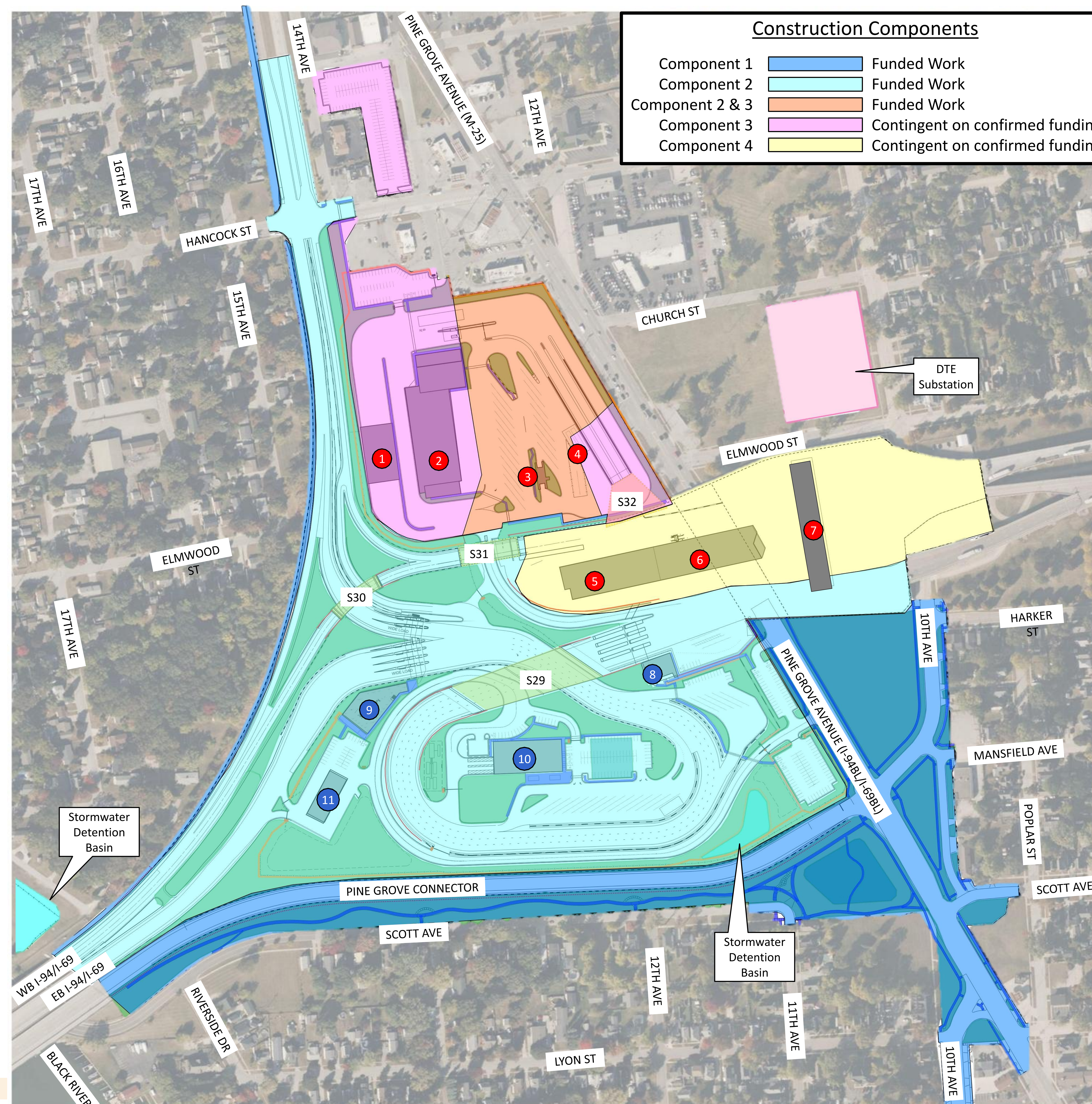
2022 Blue Water Bridge Expansion – Components 1-4



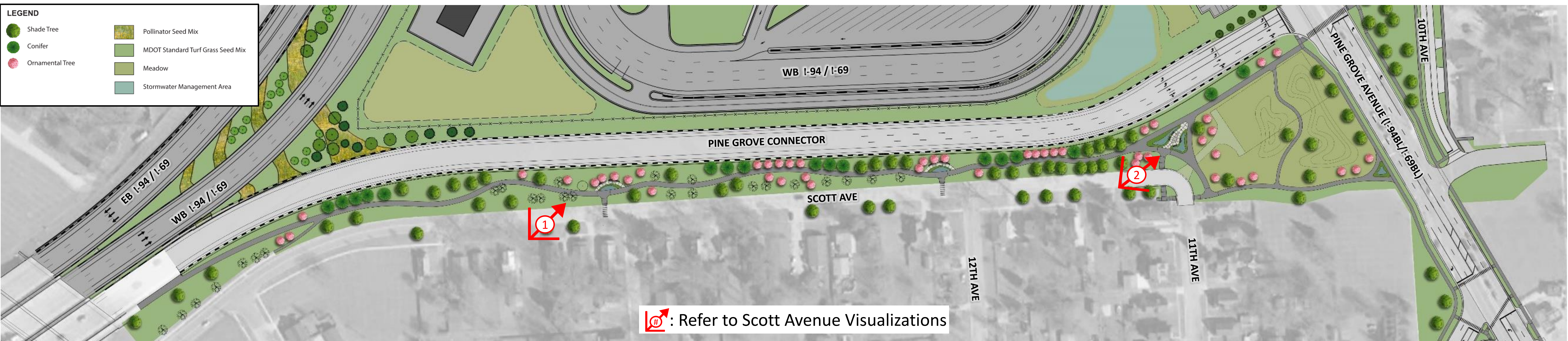
Map Key:

- # Infrastructure Contingent on Confirmed Funding
- # Funded Infrastructure
- 1 CBP NII Building
- 2 CBP Commercial Secondary Building
- 3 HAZMAT Canopy
- 4 USDA Canopy
- 5 CBP Main Building
- 6 CBP Non-Commercial Secondary Inspection Canopy
- 7 CBP Primary Inspection Lanes
- 8 CBP Outbound Building
- 9 MDOT Administration Building
- 10 Duty Free Building
- 11 MDOT Equipment Storage Building
- Security Fence/Walls
- Sidewalks
- Bridges
- Buildings/Facilities
- Stormwater Basins

Construction Components



Scott Avenue Conceptual Landscape Plan



Conceptual Landscape Plan



Noise Barrier Visualization



Noise Barrier Pattern/Coloring

NOTE: Aesthetics and noise wall details are for example only and are subject to change.

Scott Avenue Visualization 1



Proposed Scott Avenue Looking Northeast



Existing View

NOTE: Aesthetics and noise wall details are for example only and are subject to change.

Scott Avenue Visualization 2



Proposed Scott Avenue Looking Northeast



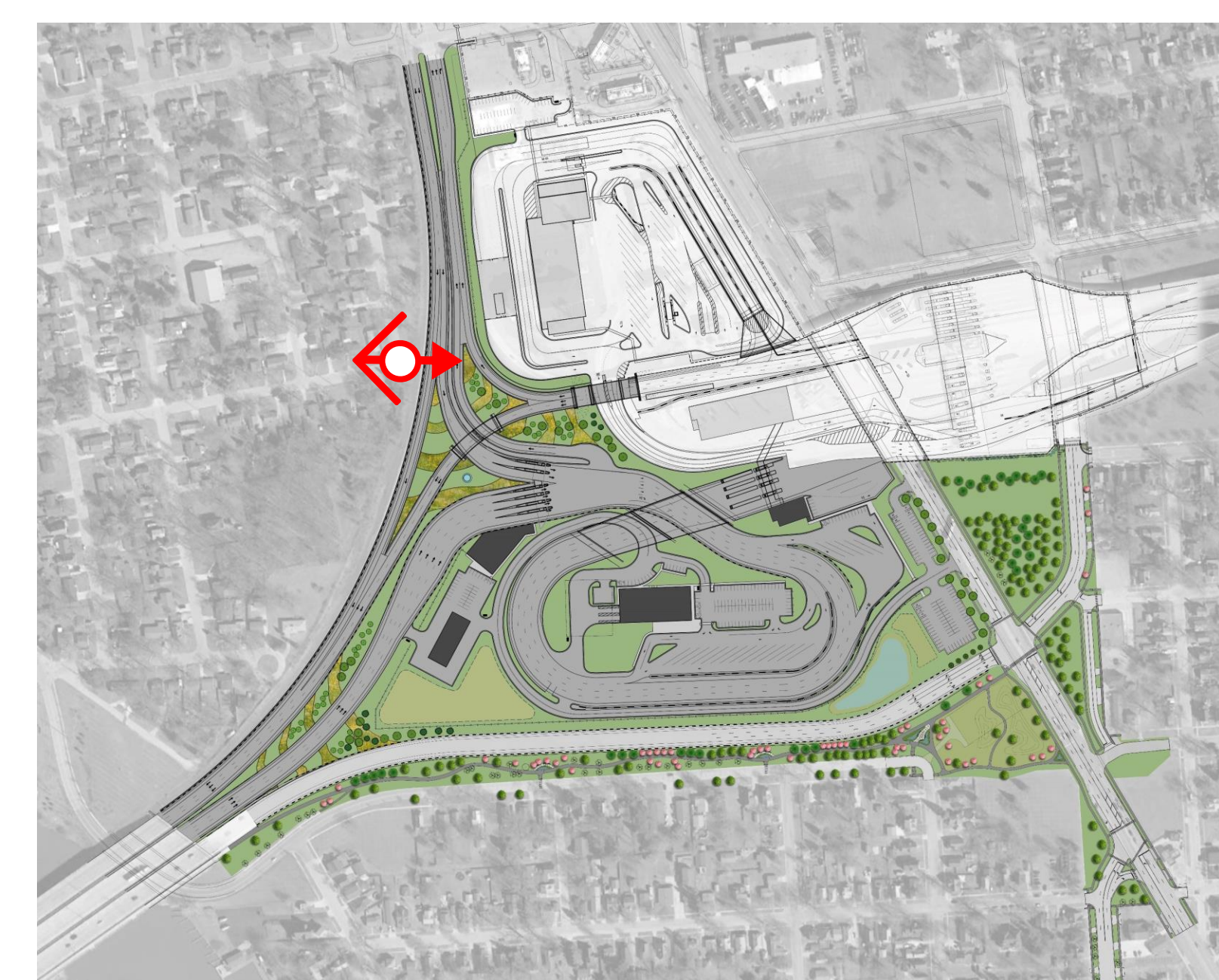
Existing View

NOTE: Aesthetics and noise wall details are for example only and are subject to change.

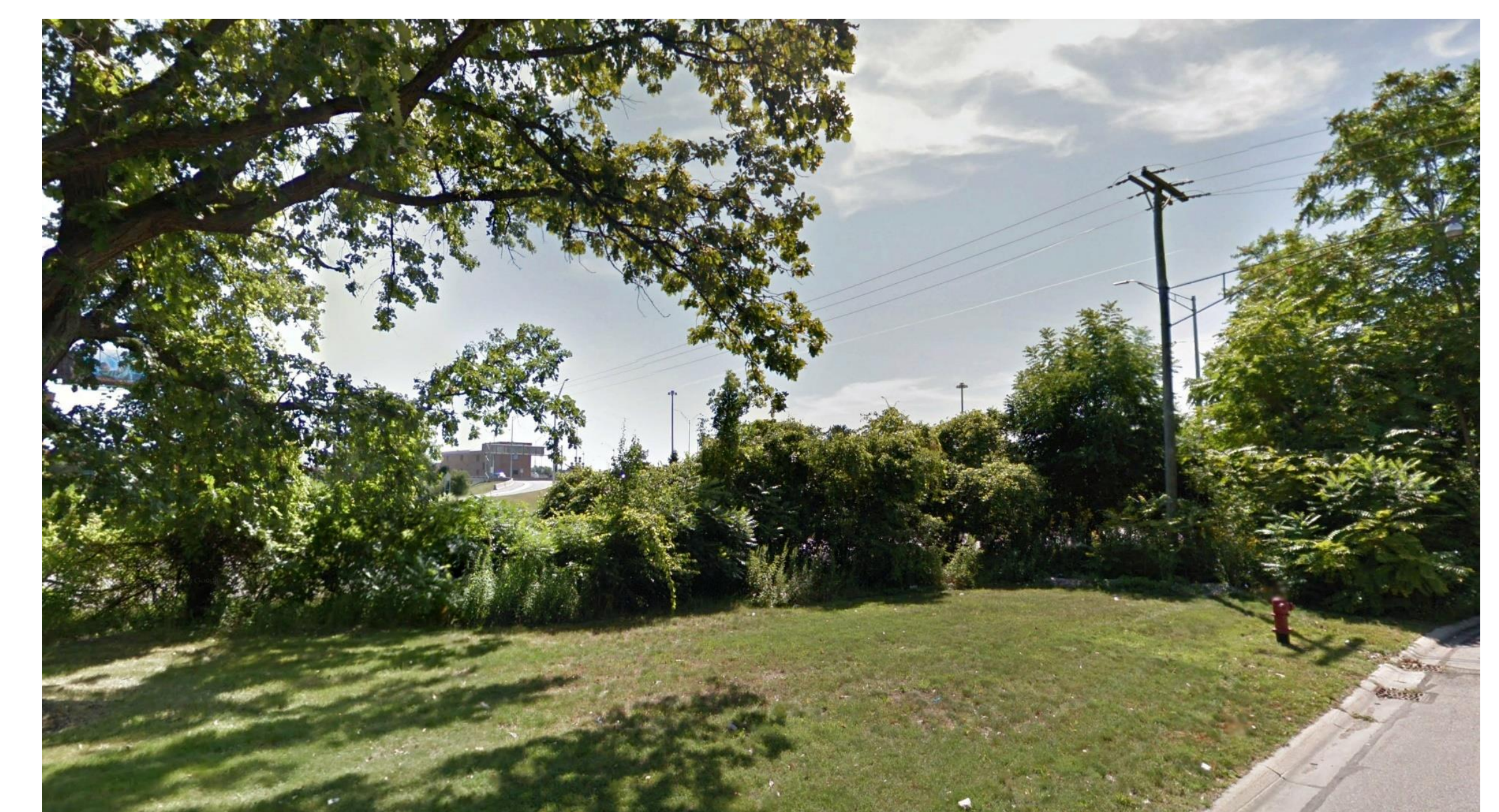
Elmwood Street View East Toward Plaza



Proposed Elmwood Avenue Looking Southeast



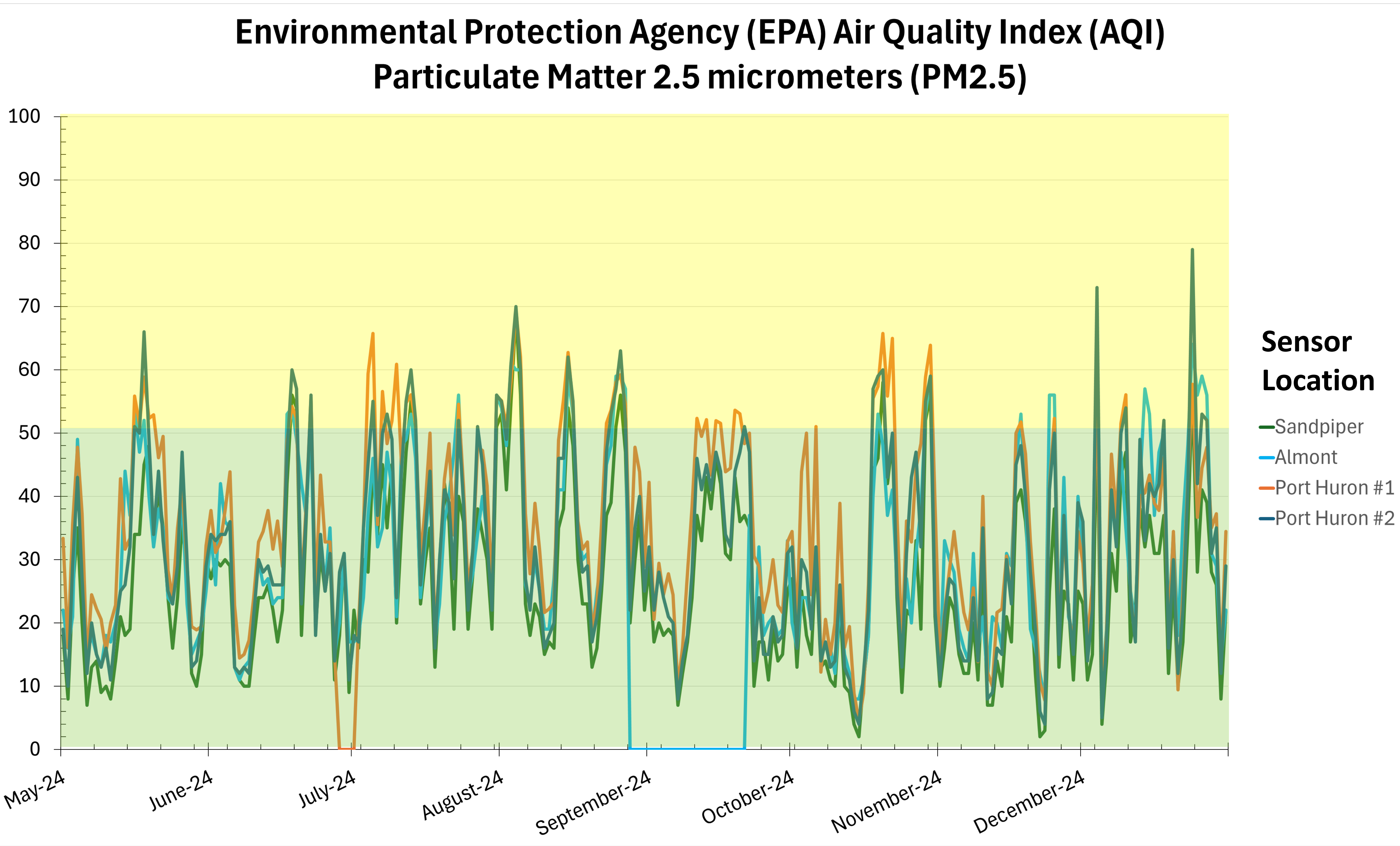
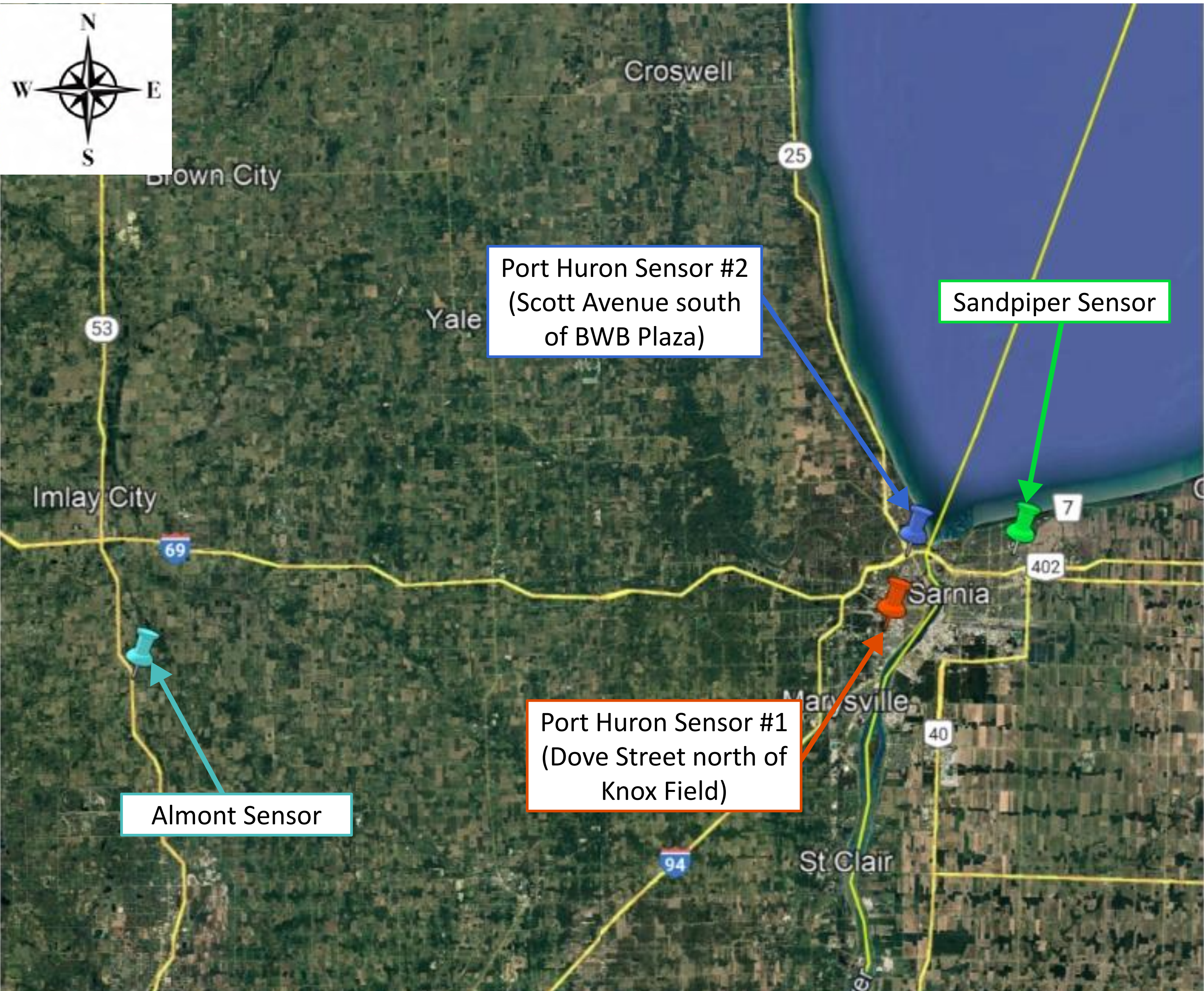
Map Key



Existing View

NOTE: Aesthetics and noise wall details are for example only and are subject to change.

Air Quality

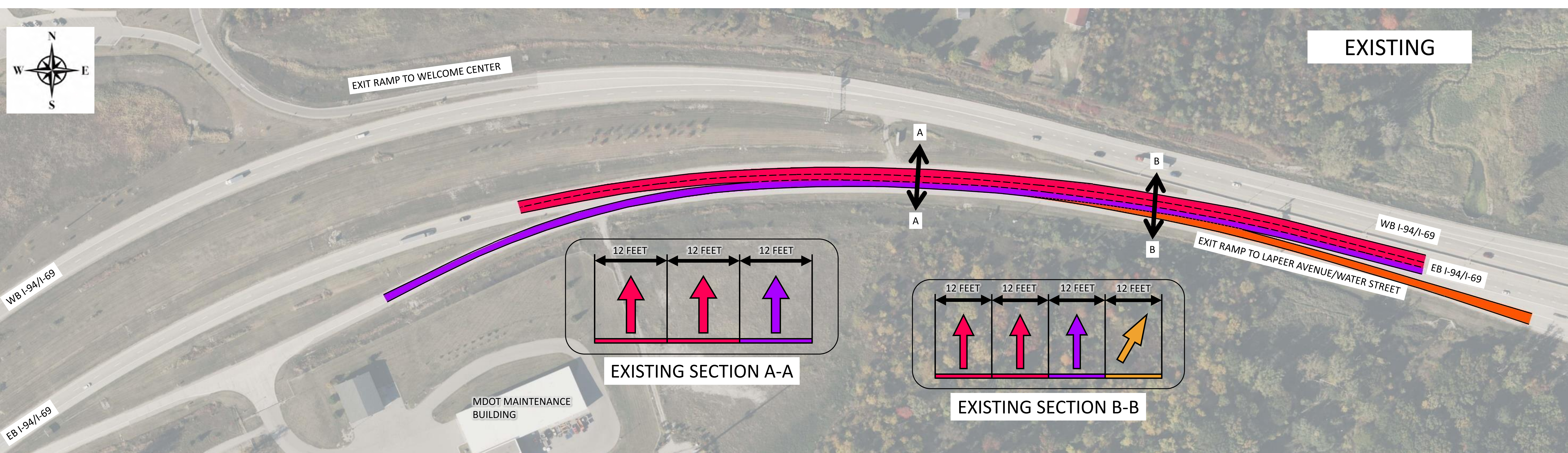
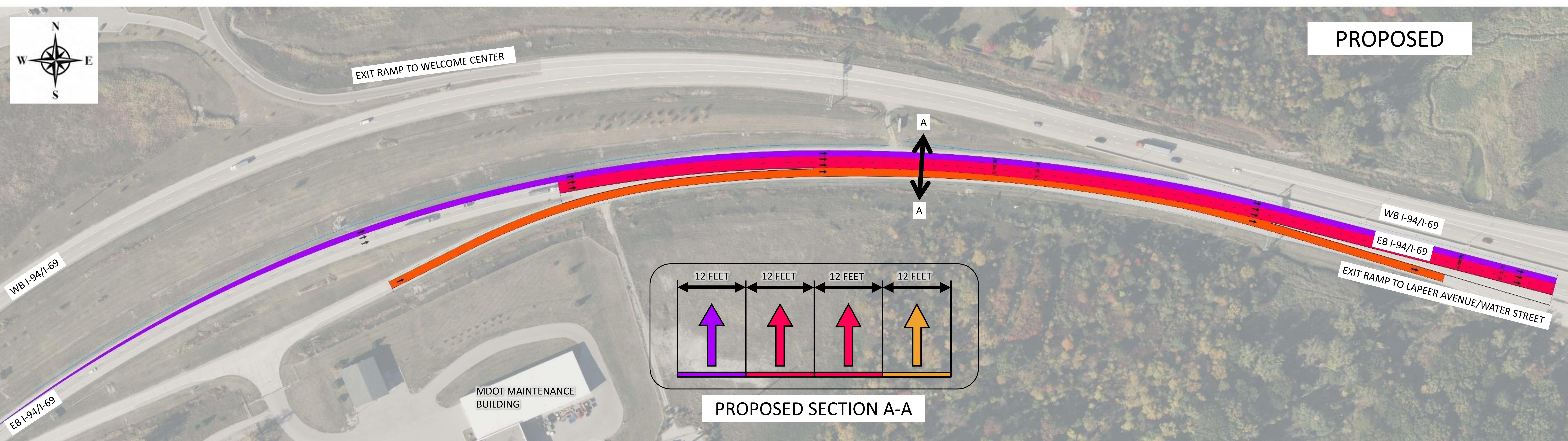


Air Quality Index Color	Levels of Health Concern	AQI Values
Green	Good	0 to 50
Yellow	Moderate	51 to 100
Orange	Unhealthy for Sensitive Groups	101 to 150
Red	Unhealthy	151 to 200
Purple	Very Unhealthy	201 to 300
Maroon	Hazardous	301 and Higher

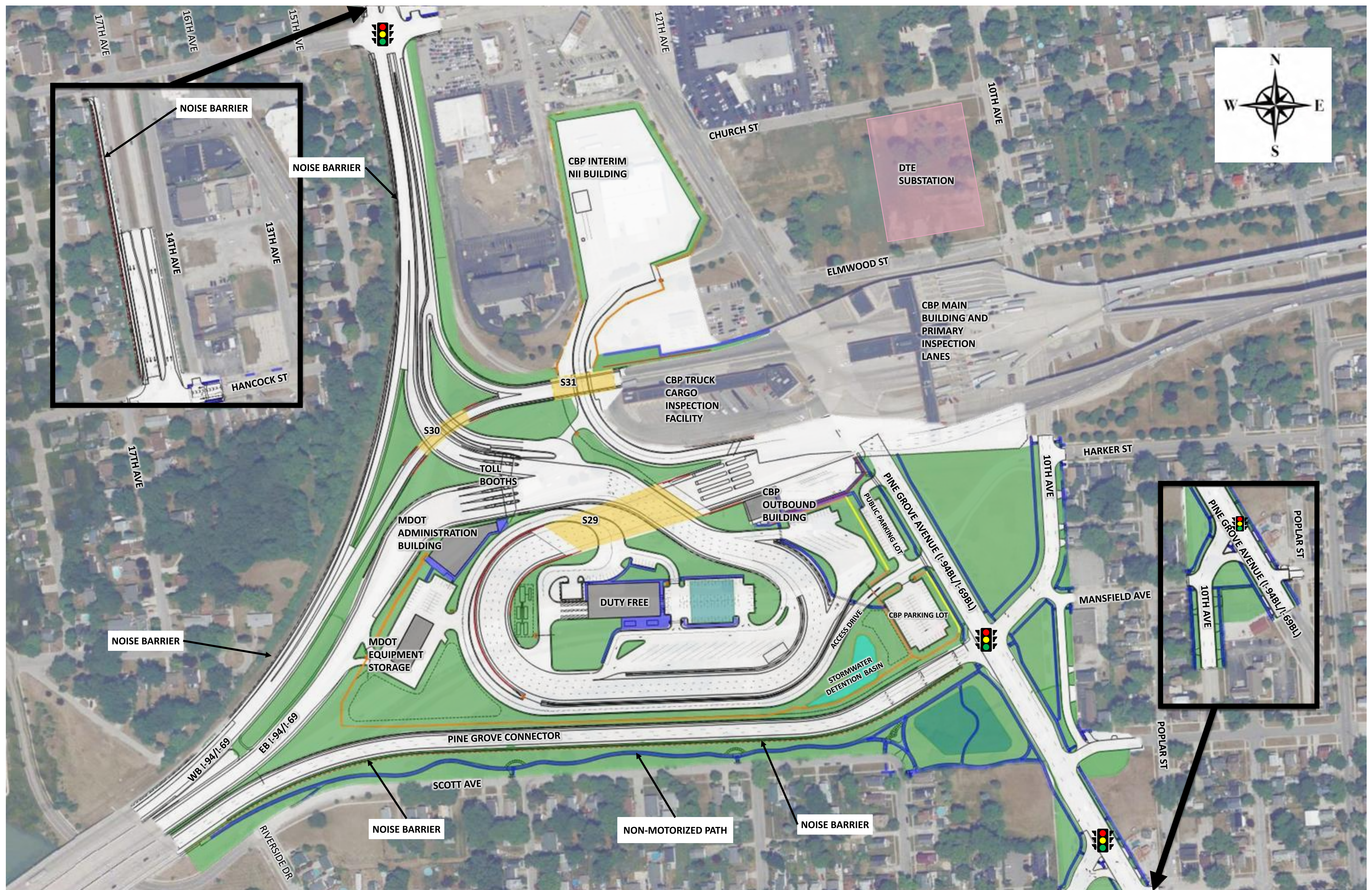
“Technical Assistance Document for the Reporting of Daily Air Quality – the Air Quality Index (AQI).” Environmental Protection Agency. (May 2024).
<https://document.airnow.gov/technical-assistance-document-for-the-reporting-of-daily-air-quality.pdf>



Water Street/Lapeer Avenue Exit Reconfiguration



Blue Water Bridge - Component 1 and 2 Funded Work



Construction Schedule

Component 1

(Early Works Package)

Construction: 2025 - 2026

- Eastbound I-94/I-69 exit to I-94 BL/I-69 BL (Pine Grove Avenue)
- 10th Avenue reconfiguration at I-94 BL/I-69 BL (Pine Grove Avenue)
- Noise wall along eastbound I-94/I-69 exit to I-94 BL/I-69 BL (Pine Grove Avenue)
- Noise wall along on ramp to westbound I-94/I-69 BL (from Garfield Street south to Black River Bridge)
- Rebuild eastbound I-94/I-69 at the MDOT maintenance building

Component 2

Construction: 2026 - 2031

- Looped roadway south of the plaza
- Duty-free building and associated roadways and parking lots
- Customs and Border Protection (CBP) outbound building, booths and canopy
- MDOT administration building, toll booths and canopy
- MDOT equipment storage
- Freeway and local road connections west of plaza
- Bridge structures (S29: replacement, S30, and S31)
- Interim CBP non-intrusive inspection (NII) building at existing duty-free building

Component 3

Construction: Two Years, contingent upon funding appropriation

- Loop ramp for access to/from the commercial secondary inspection area
- Permanent CBP NII building
- CBP commercial secondary building and all associated roadways and parking lots
- Hazardous material (HAZMAT) canopy
- U.S. Department of Agriculture (USDA) canopy
- Exit control canopy and booths
- New S32 bridge structure
- Additional filler deck to the B04 bridge

Component 4

Construction: Two - Three Years, contingent upon funding appropriation

- CBP main building
- CBP non-commercial secondary inspection canopy
- CBP primary inspection lanes, canopy and booths

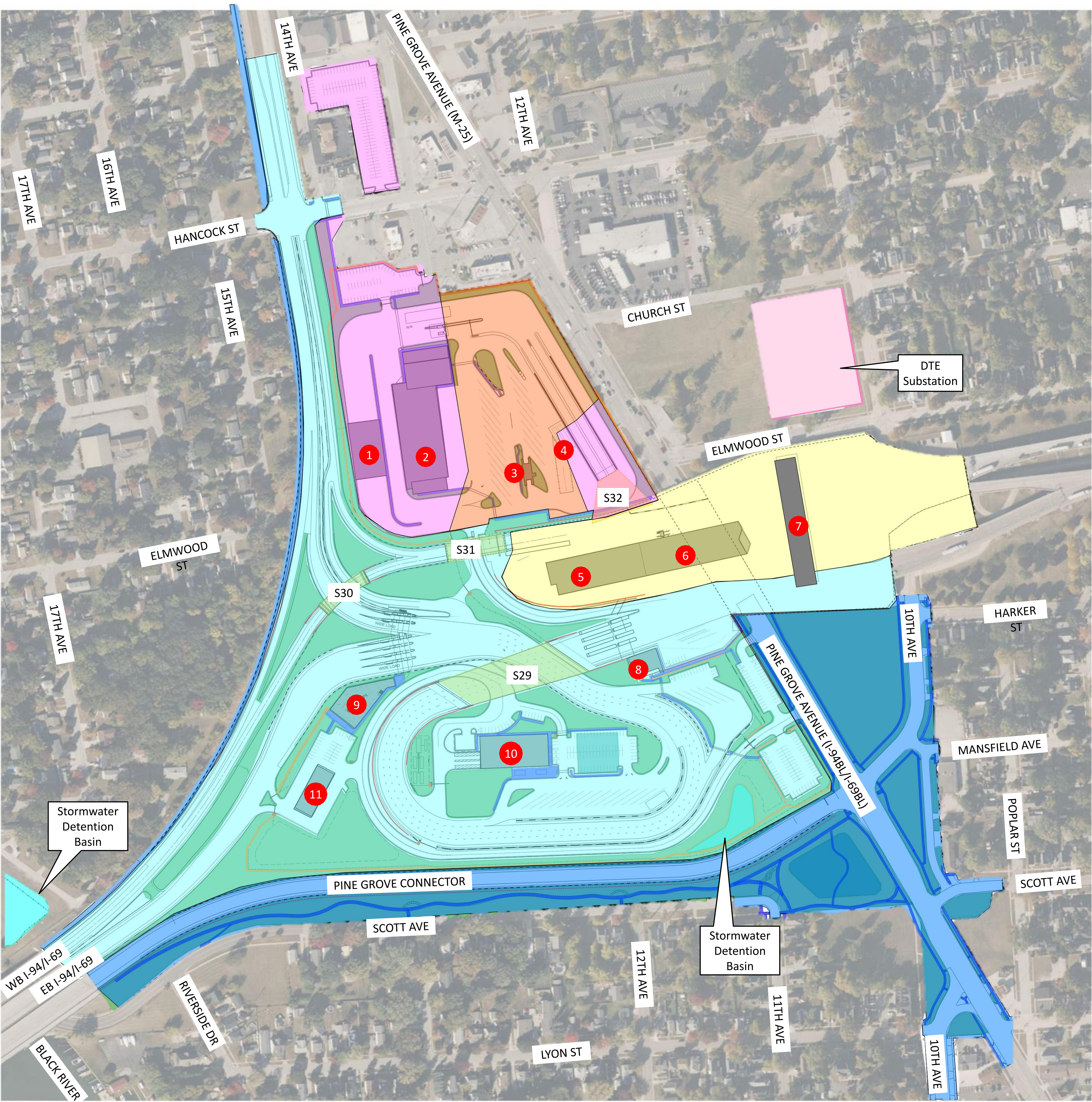
Construction Components

Construction Components

- Component 1
- Component 2
- Component 2 & 3
- Component 3
- Component 4

Map Key:

- 1 CBP NII Building
- 2 CBP Commercial Secondary Building
- 3 HAZMAT Canopy
- 4 USDA Canopy
- 5 CBP Main Building
- 6 CBP Non-Commercial Secondary Inspection Canopy
- 7 CBP Primary Inspection Lanes
- 8 CBP Outbound Building
- 9 MDOT Administration Building
- 10 Duty Free Building
- 11 MDOT Equipment Storage Building
- Security Fence/Walls
- Sidewalks
- Bridges
- Buildings/Facilities
- Stormwater Basins



Approved Noise Walls

