

Noise Analysis Maps

US-23 Noise Analysis Map Figure Locations

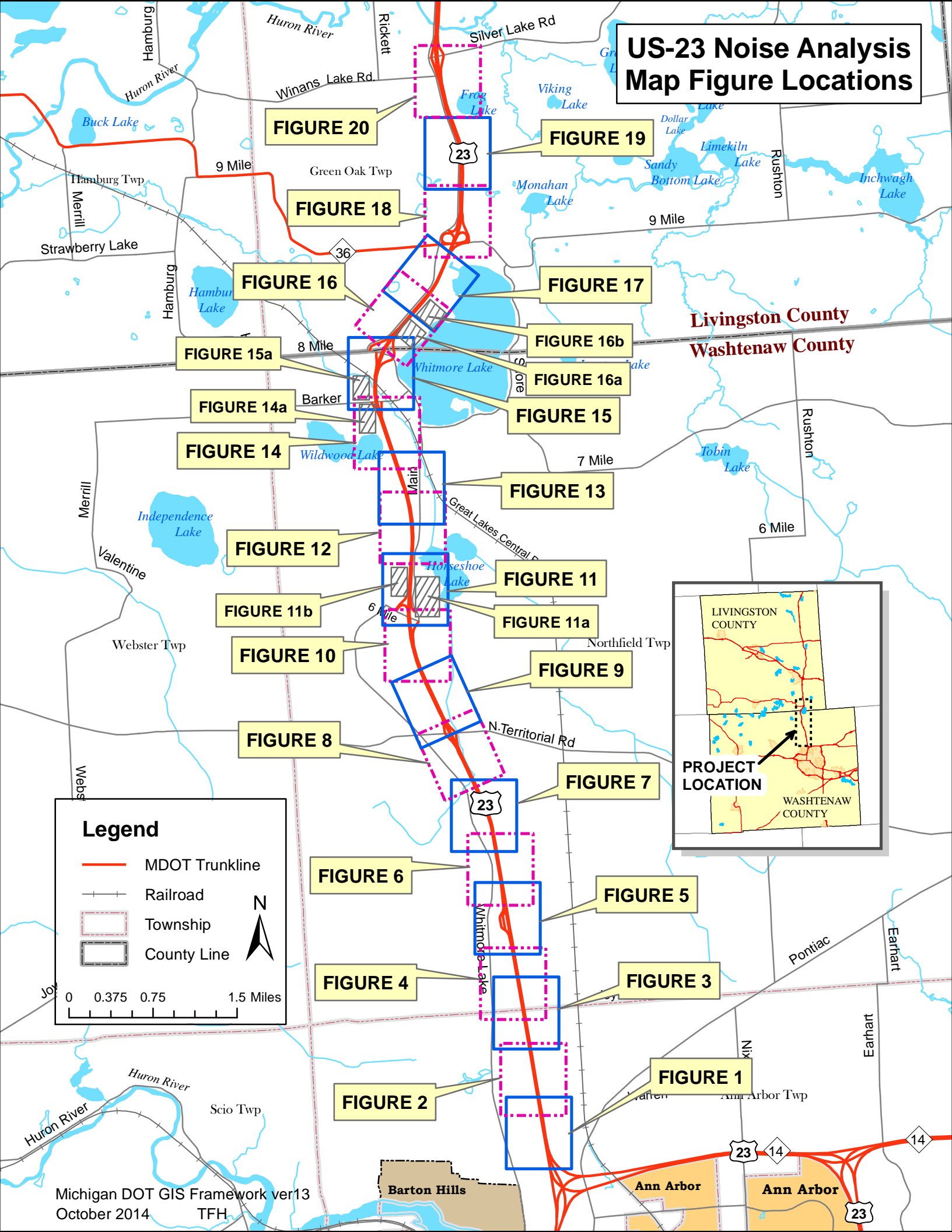


FIGURE 20

FIGURE 19

FIGURE 18

FIGURE 17

FIGURE 16

FIGURE 16b

FIGURE 15a

FIGURE 16a

FIGURE 14a

FIGURE 15

FIGURE 14

FIGURE 13

FIGURE 12

FIGURE 11

FIGURE 11b

FIGURE 11a

FIGURE 10

FIGURE 9

FIGURE 8

FIGURE 7

FIGURE 6

FIGURE 5

FIGURE 4

FIGURE 3

FIGURE 2

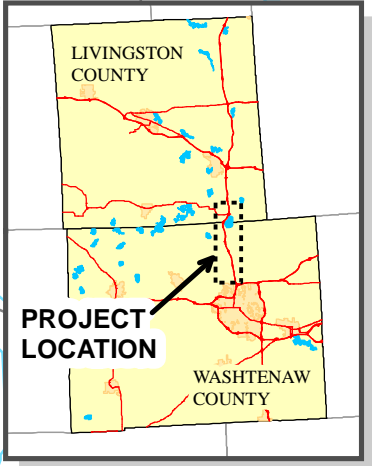
FIGURE 1

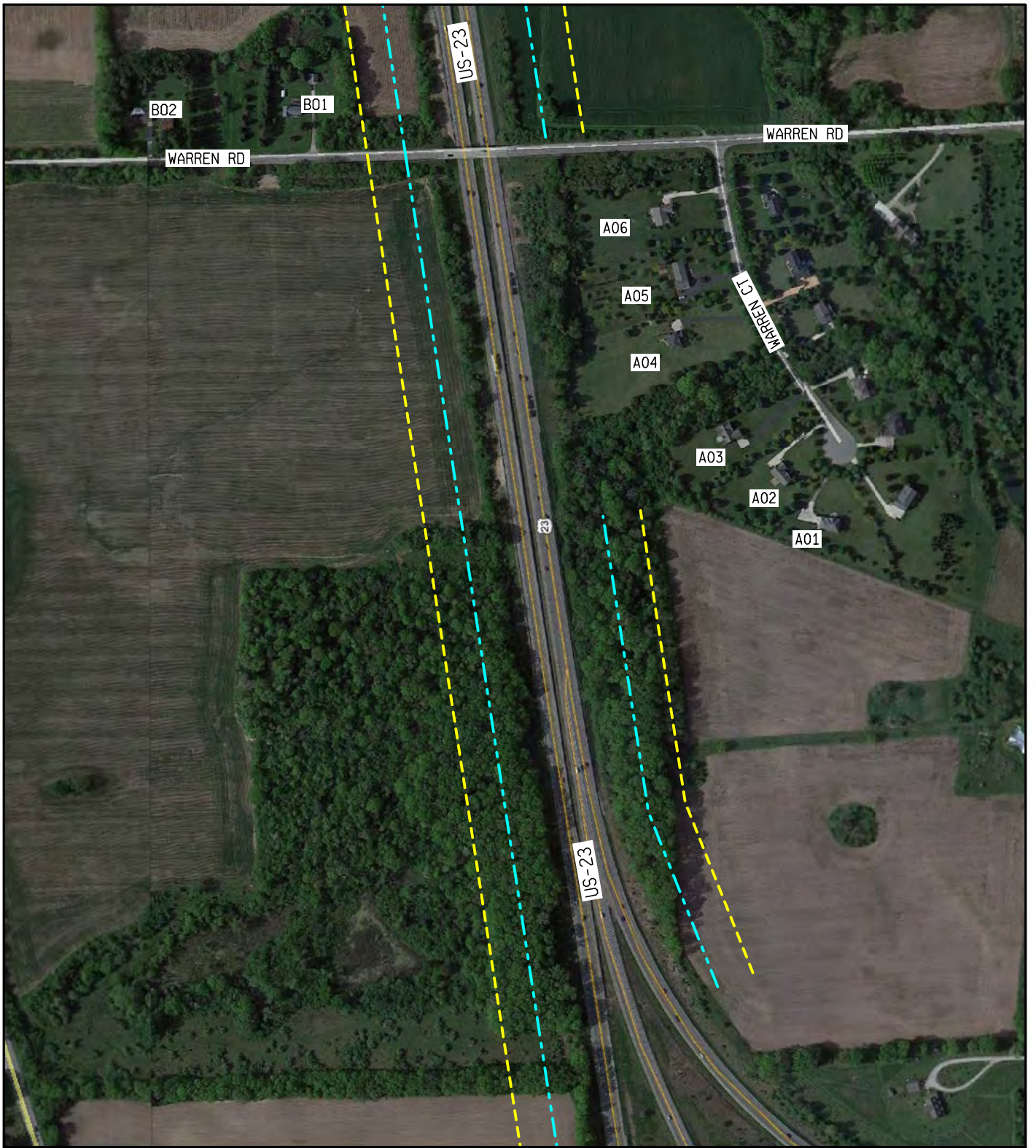
Legend

- MDOT Trunkline
- +— Railroad
- Township
- County Line

N

0 0.375 0.75 1.5 Miles





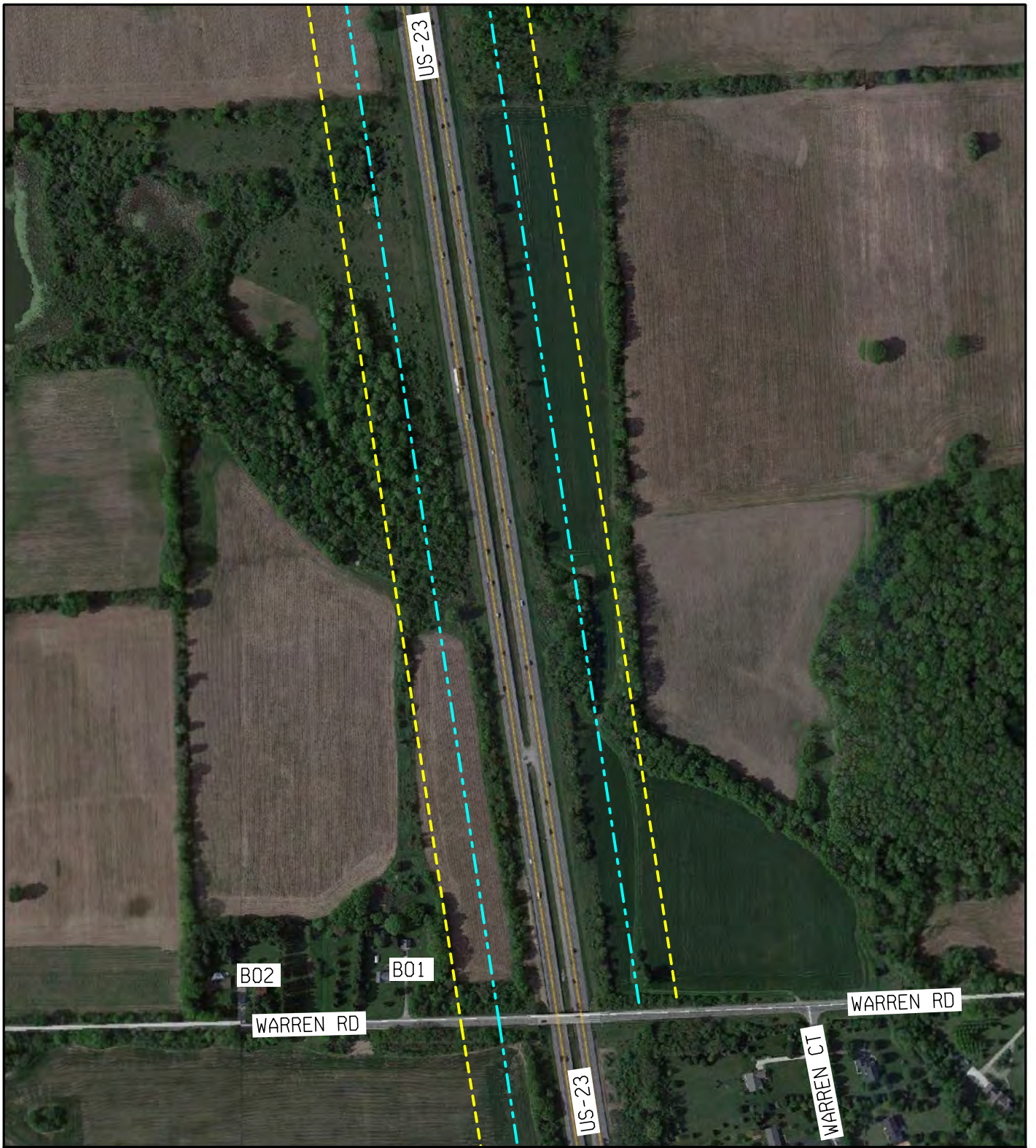
Legend

- A00 Modeled site, not benefited and not impacted
- A00 Modeled site, not benefited and impacted
- A00 Modeled site, benefited and not impacted
- A00 Modeled site, benefited and impacted
- SITE 1 Field Measurement Site
- 66 dB(A) Leq Setback
- 71 dB(A) Leq Setback
- Feasible and Reasonable Noise Barrier
- Evaluated Noise Barrier



Figure 1

Noise Analysis
 US-23
 M-14/US-23 to Silver Lake Road
 Washtenaw & Livingston County
 Michigan



Legend

- A00 Modeled site, not benefited and not impacted
- A00 Modeled site, not benefited and impacted
- A00 Modeled site, benefited and not impacted
- A00 Modeled site, benefited and impacted
- SITE 1 Field Measurement Site
- 66 dB(A) Leq Setback
- 71 dB(A) Leq Setback
- Feasible and Reasonable Noise Barrier
- Evaluated Noise Barrier

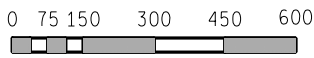
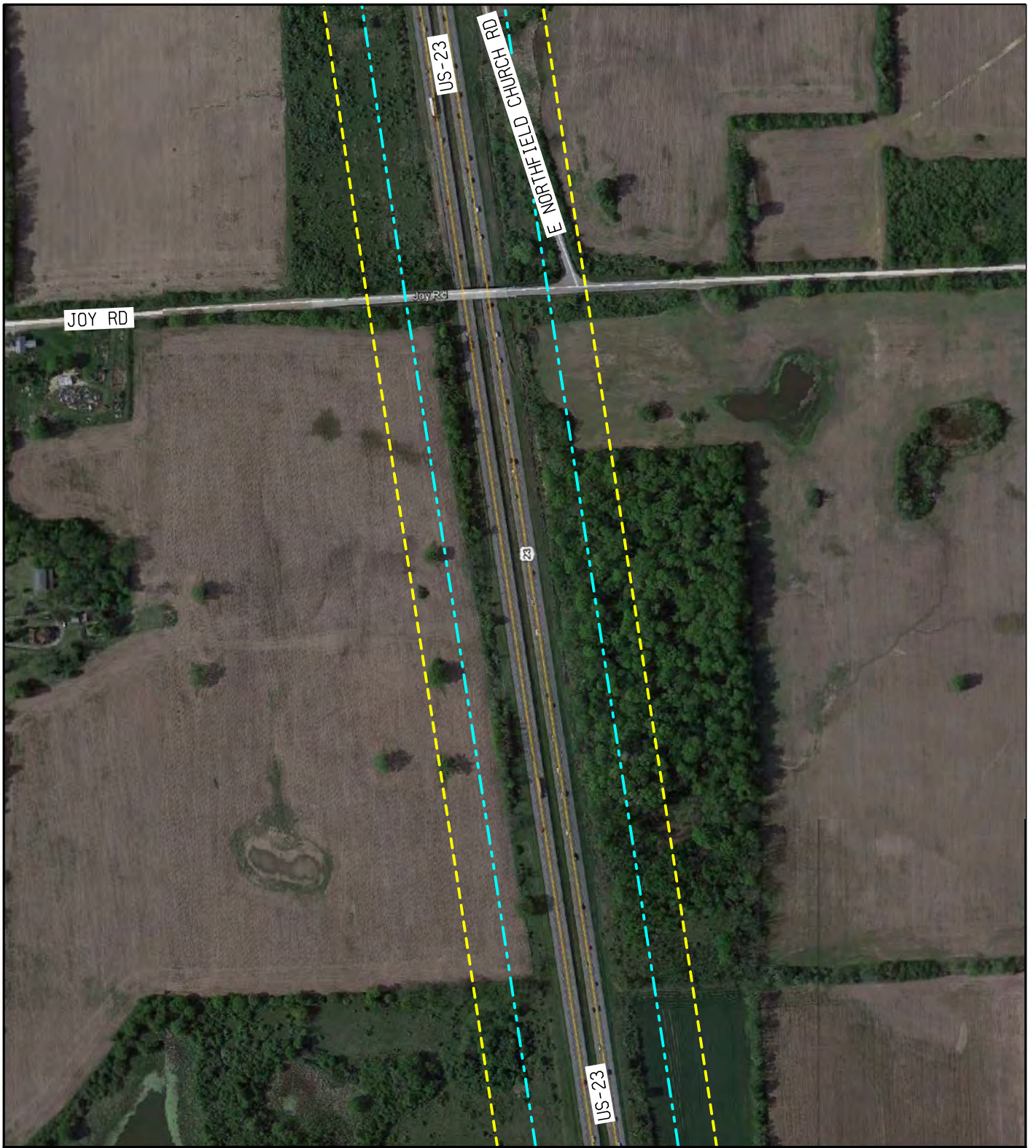


Figure 2

Noise Analysis
 US-23
 M-14/US-23 to Silver Lake Road
 Washtenaw & Livingston County
 Michigan



Legend

- A00 Modeled site, not benefited and not impacted
- A00 Modeled site, not benefited and impacted
- A00 Modeled site, benefited and not impacted
- A00 Modeled site, benefited and impacted
- SITE 1 Field Measurement Site
- 66 dB(A) Leq Setback
- 71 dB(A) Leq Setback
- Feasible and Reasonable Noise Barrier
- Evaluated Noise Barrier

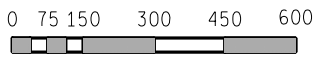
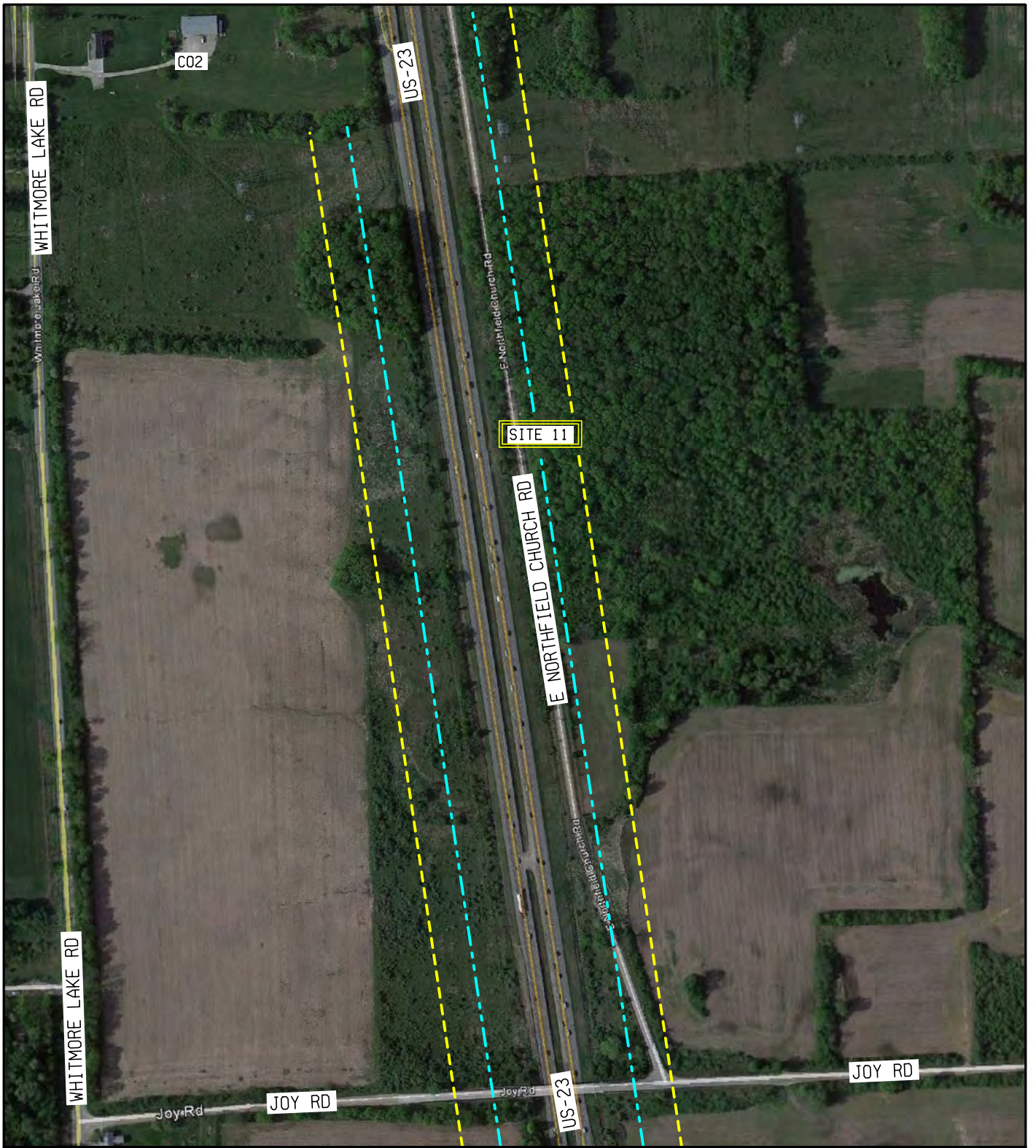


Figure 3

Noise Analysis
 US-23
 M-14/US-23 to Silver Lake Road
 Washtenaw & Livingston County
 Michigan



Legend

- A00 Modeled site, not benefited and not impacted
- A00 Modeled site, not benefited and impacted
- A00 Modeled site, benefited and not impacted
- A00 Modeled site, benefited and impacted
- SITE 1 Field Measurement Site
- 66 dB(A) Leq Setback
- 71 dB(A) Leq Setback
- Feasible and Reasonable Noise Barrier
- Evaluated Noise Barrier

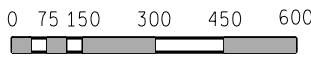
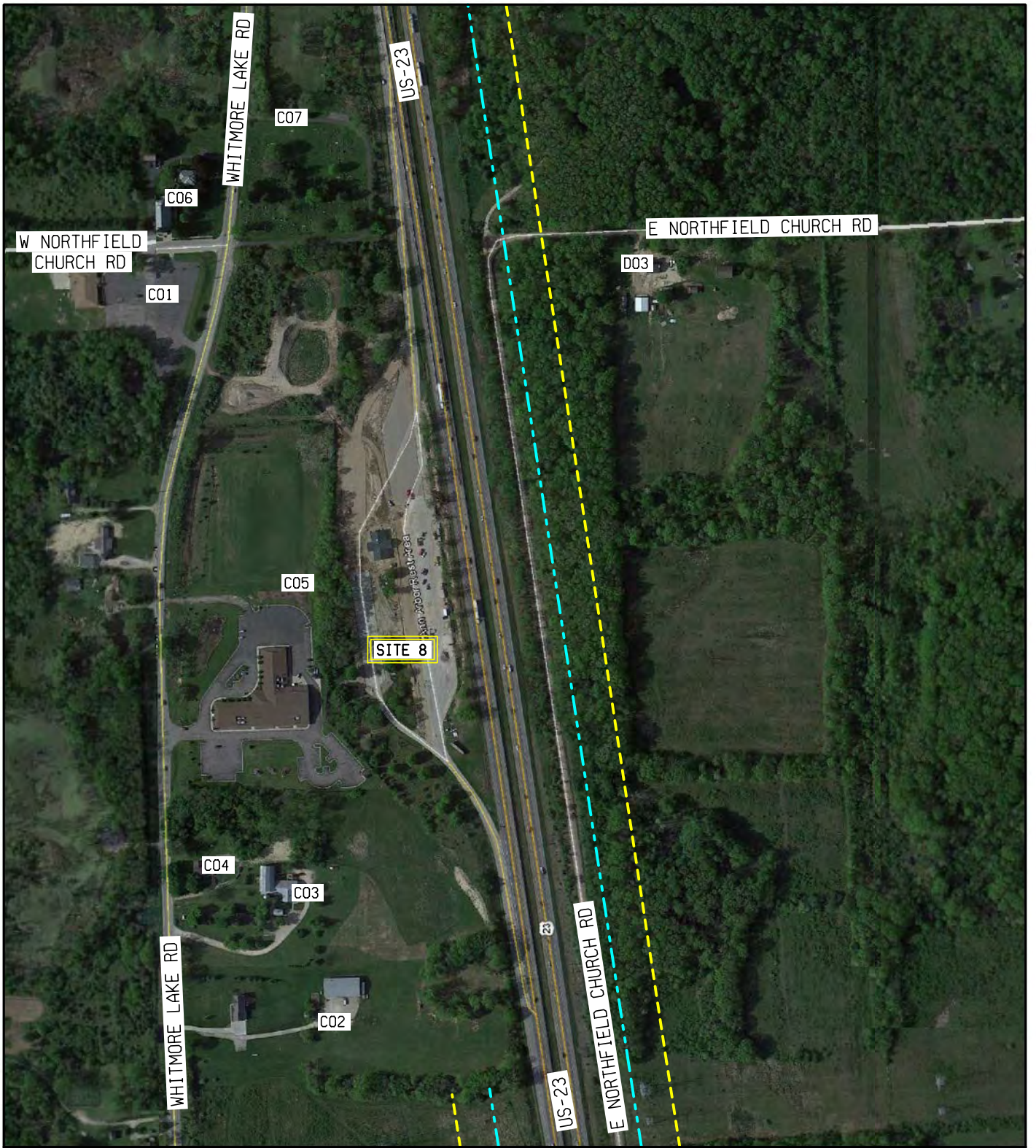


Figure 4

Noise Analysis
 US-23
 M-14/US-23 to Silver Lake Road
 Washtenaw & Livingston County
 Michigan



Legend

- A00 Modeled site, not benefited and not impacted
- A00 Modeled site, not benefited and impacted
- A00 Modeled site, benefited and not impacted
- A00 Modeled site, benefited and impacted
- SITE 1 Field Measurement Site
- 66 dB(A) Leq Setback
- 71 dB(A) Leq Setback
- Feasible and Reasonable Noise Barrier
- Evaluated Noise Barrier

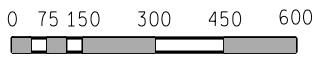


Figure 5

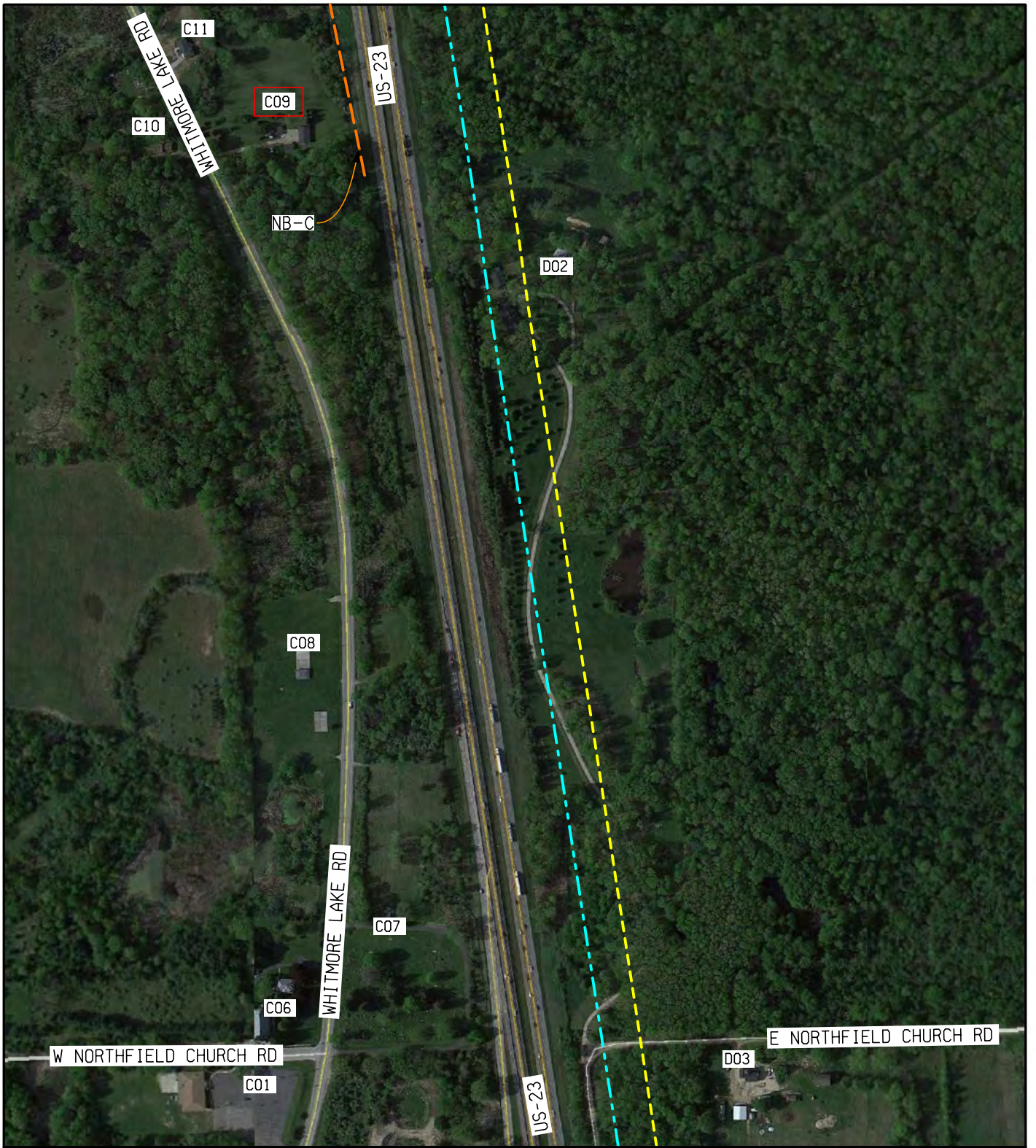
Noise Analysis

US-23

M-14/US-23 to Silver Lake Road

Washtenaw & Livingston County

Michigan



Legend

- A00 Modeled site, not benefited and not impacted
- A00 Modeled site, not benefited and impacted
- A00 Modeled site, benefited and not impacted
- A00 Modeled site, benefited and impacted
- SITE 1 Field Measurement Site
- 66 dB(A) Leq Setback
- 71 dB(A) Leq Setback
- Feasible and Reasonable Noise Barrier
- Evaluated Noise Barrier

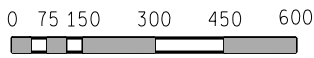
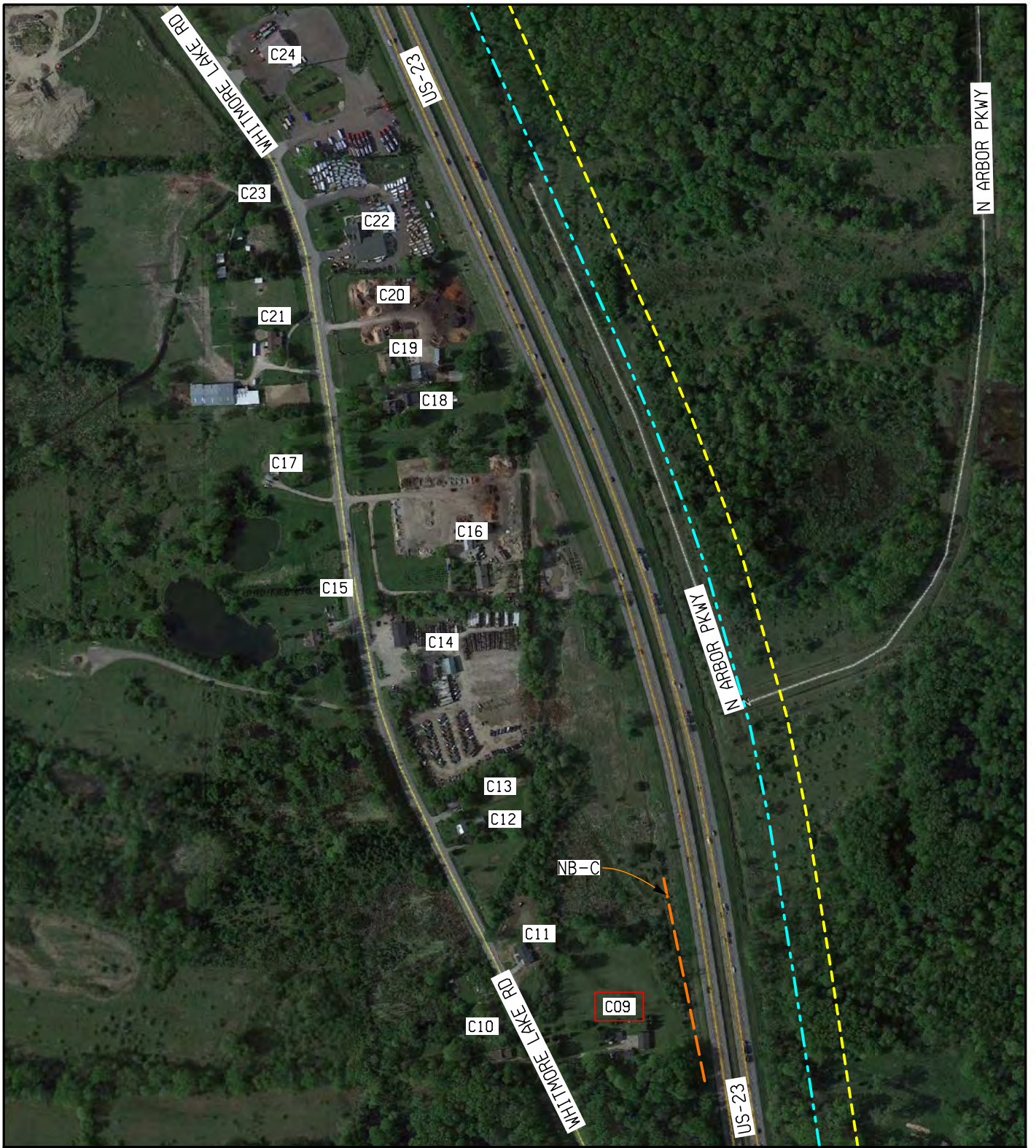


Figure 6

Noise Analysis
 US-23
 M-14/US-23 to Silver Lake Road
 Washtenaw & Livingston County
 Michigan



Legend

- A00 Modeled site, not benefited and not impacted
- A00 Modeled site, not benefited and impacted
- A00 Modeled site, benefited and not impacted
- A00 Modeled site, benefited and impacted
- SITE 1 Field Measurement Site
- 66 dB(A) Leq Setback
- 71 dB(A) Leq Setback
- Feasible and Reasonable Noise Barrier
- Evaluated Noise Barrier

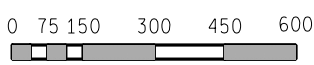


Figure 7

Noise Analysis
 US-23
 M-14/US-23 to Silver Lake Road
 Washtenaw & Livingston County
 Michigan



Legend

- A00 Modeled site, not benefited and not impacted
- A00 Modeled site, not benefited and impacted
- A00 Modeled site, benefited and not impacted
- A00 Modeled site, benefited and impacted
- SITE 1 Field Measurement Site
- 66 dB(A) Leq Setback
- 71 dB(A) Leq Setback
- Feasible and Reasonable Noise Barrier
- Evaluated Noise Barrier

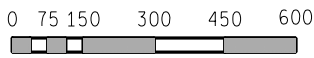
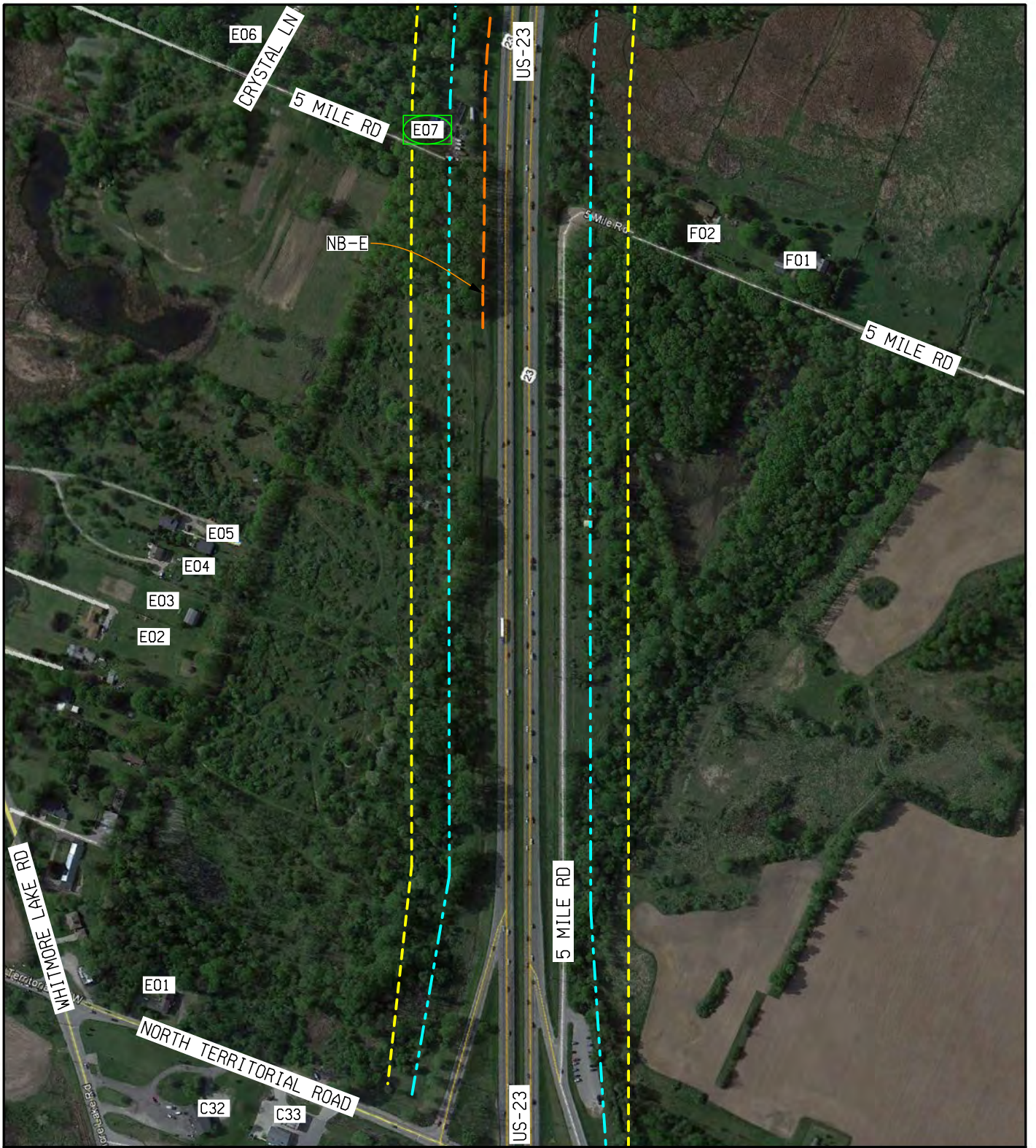


Figure 8

Noise Analysis
 US-23
 M-14/US-23 to Silver Lake Road
 Washtenaw & Livingston County
 Michigan



Legend

- A00 Modeled site, not benefited and not impacted
- A00 Modeled site, not benefited and impacted
- A00 Modeled site, benefited and not impacted
- A00 Modeled site, benefited and impacted
- SITE 1 Field Measurement Site
- 66 dB(A) Leq Setback
- 71 dB(A) Leq Setback
- Feasible and Reasonable Noise Barrier
- Evaluated Noise Barrier

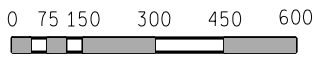
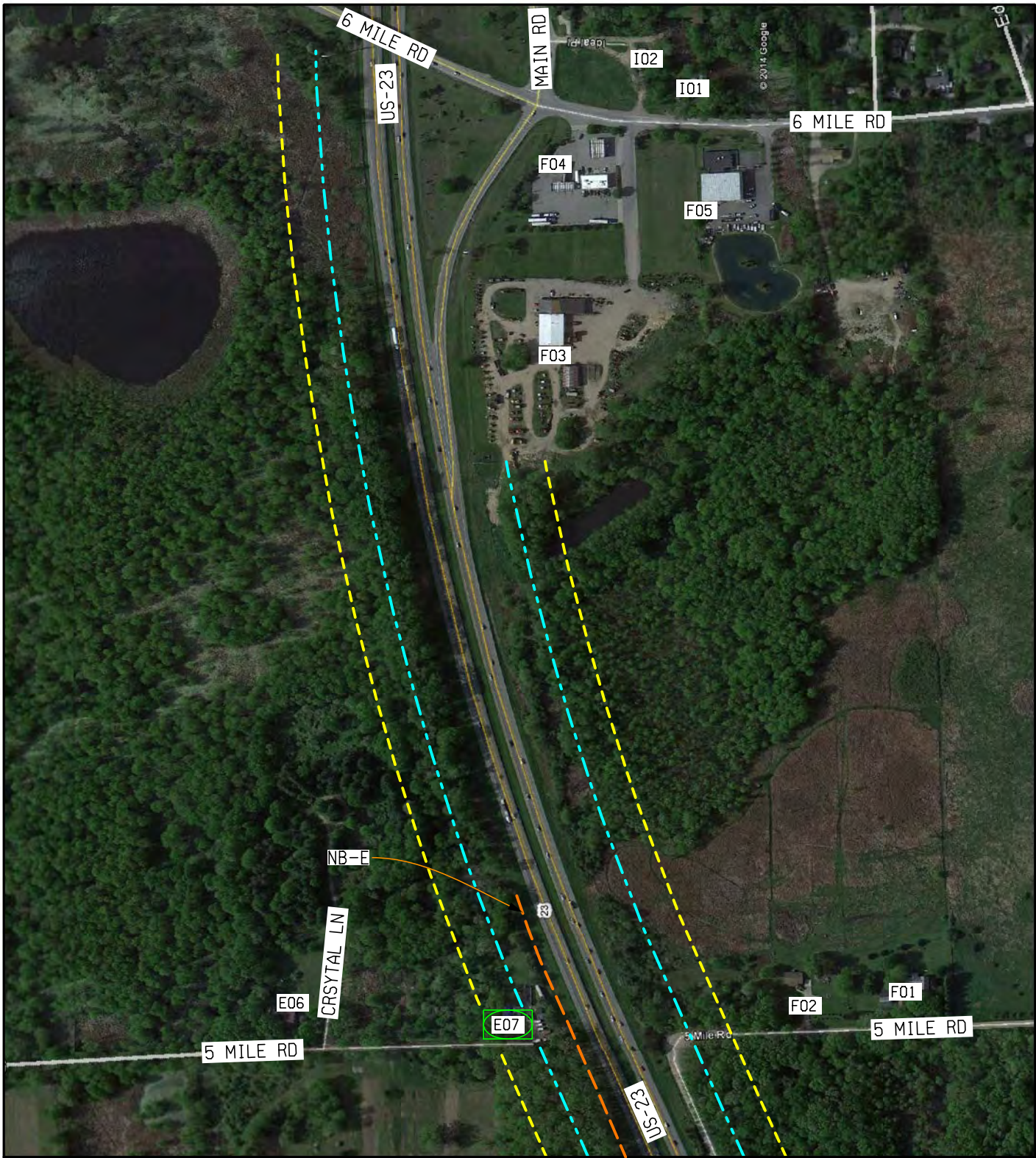


Figure 9

Noise Analysis
US-23

M-14/US-23 to Silver Lake Road
Washtenaw & Livingston County
Michigan



Legend

- A00 Modeled site, not benefited and not impacted
- A00 Modeled site, not benefited and impacted
- A00 Modeled site, benefited and not impacted
- A00 Modeled site, benefited and impacted
- SITE 1 Field Measurement Site
- 66 dB(A) Leq Setback
- 71 dB(A) Leq Setback
- Feasible and Reasonable Noise Barrier
- Evaluated Noise Barrier

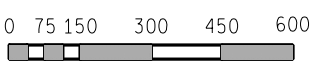


Figure 10

Noise Analysis
 US-23
 M-14/US-23 to Silver Lake Road
 Washtenaw & Livingston County
 Michigan



Legend

- A00 Modeled site, not benefited and not impacted
- A00 Modeled site, not benefited and impacted
- A00 Modeled site, benefited and not impacted
- A00 Modeled site, benefited and impacted
- SITE 1 Field Measurement Site
- 66 dB(A) Leq Setback
- 71 dB(A) Leq Setback
- Feasible and Reasonable Noise Barrier
- Evaluated Noise Barrier

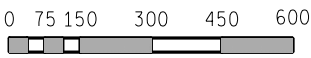


Figure 11

Noise Analysis
 US-23
 M-14/US-23 to Silver Lake Road
 Washtenaw & Livingston County
 Michigan



Legend

- A00 Modeled site, not benefited and not impacted
- A00 Modeled site, not benefited and impacted
- A00 Modeled site, benefited and not impacted
- A00 Modeled site, benefited and impacted
- SITE 1 Field Measurement Site
- 66 dB(A) Leq Setback
- 71 dB(A) Leq Setback
- Feasible and Reasonable Noise Barrier
- Evaluated Noise Barrier

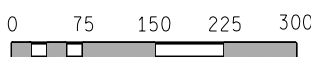


Figure 11A

Noise Analysis
 US-23
 M-14/US-23 to Silver Lake Road
 Washtenaw & Livingston County
 Michigan