



What is a PEL study?



A PEL study is a collaborative approach to transportation decision-making.

The study looks at the transportation, environmental, community, and economic goals early in the planning process.

The outcome of the PEL study will result in Alternatives for the I-475 corridor that reflect the vision and values of the greater Flint community.

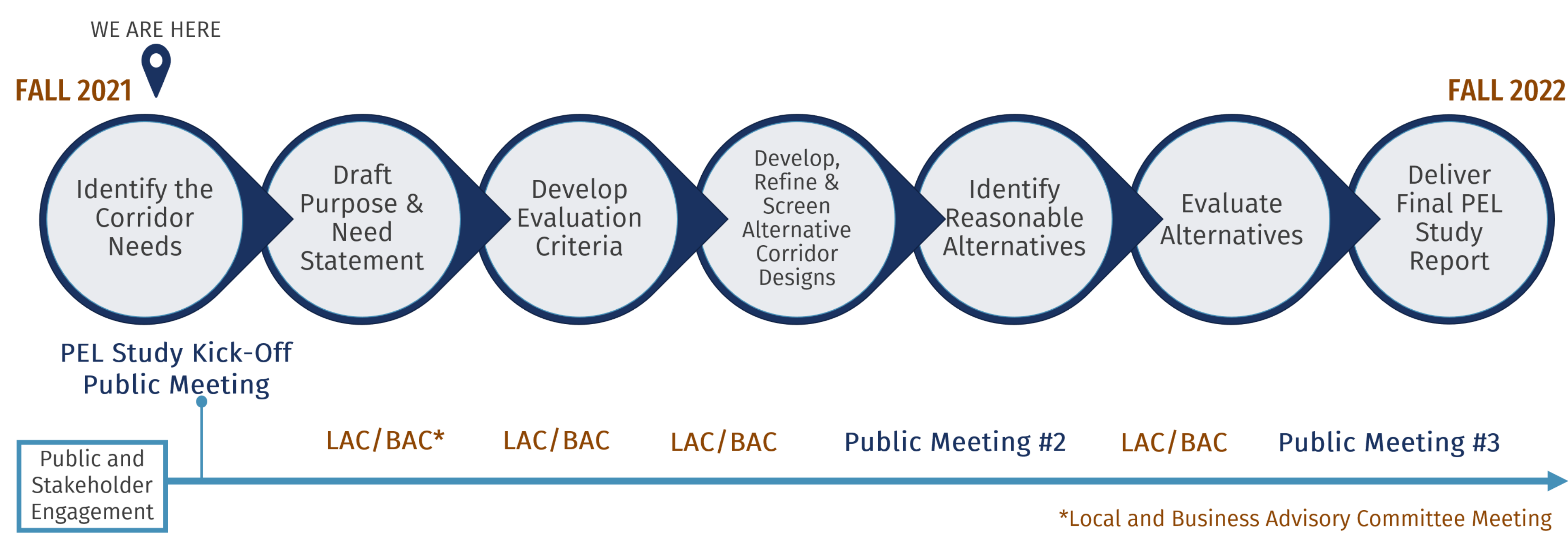
Who participates?

- Public – residents, commuters, business owners, etc.
- Local, state and federal agencies
- Resource agencies



Project Timeline

PEL Process



Anticipated Project Schedule

ACTION	MIDDLE SEGMENT	NORTH AND SOUTH SEGMENTS
PEL Study	Fall 2021 - Fall 2022	
NEPA*/Design <small>*National Environmental Policy Act</small>	Fall 2021 - Summer 2023	Spring 2022 – Spring 2023
Final Design	Summer 2023 - Fall 2025	Spring 2023
Potential Letting	Fall 2025	Fall 2023 (FY 2024)
Construction	Spring 2026	Spring 2024
Open for Traffic	Fall 2028	Fall 2026

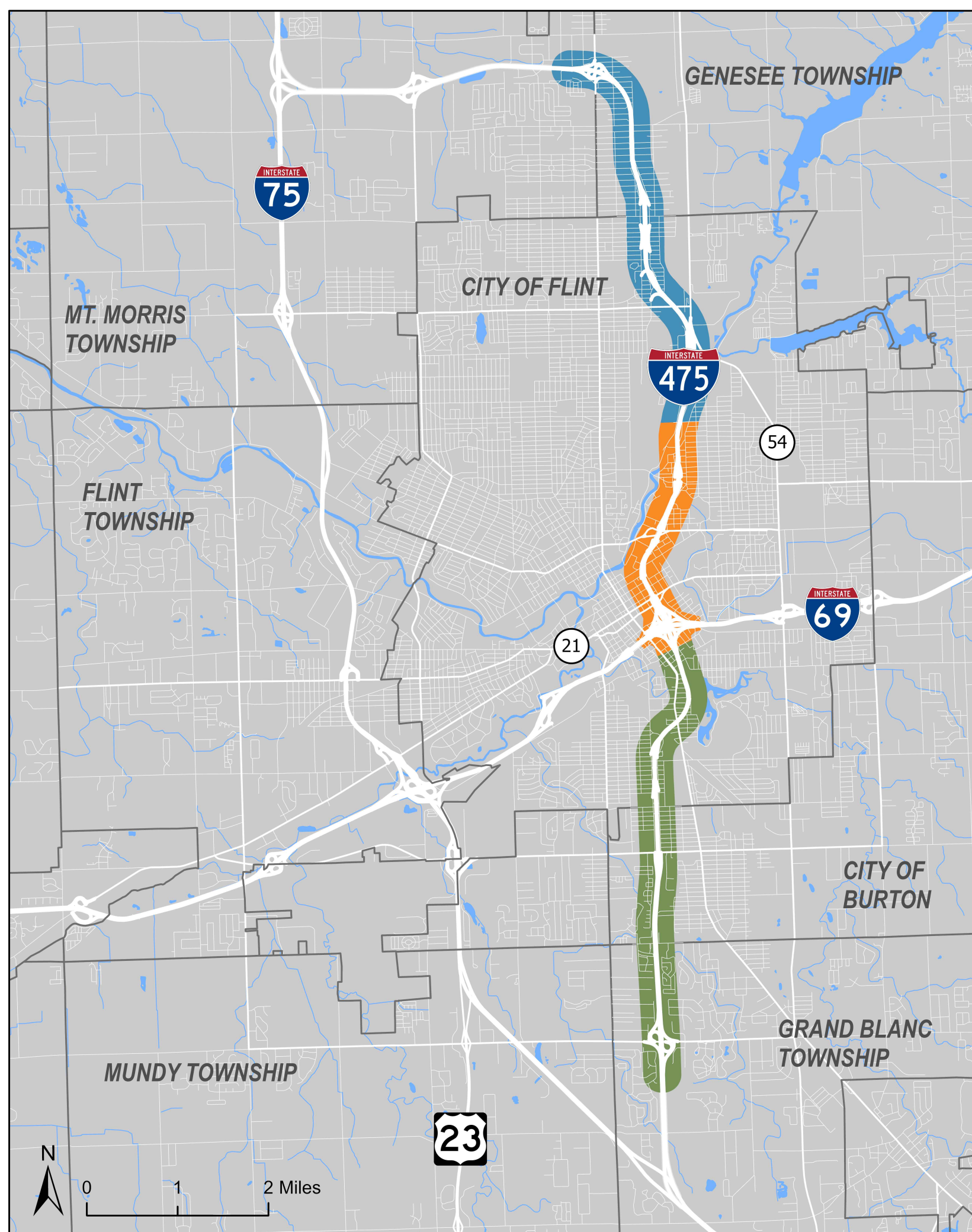
(FY) Fiscal Year





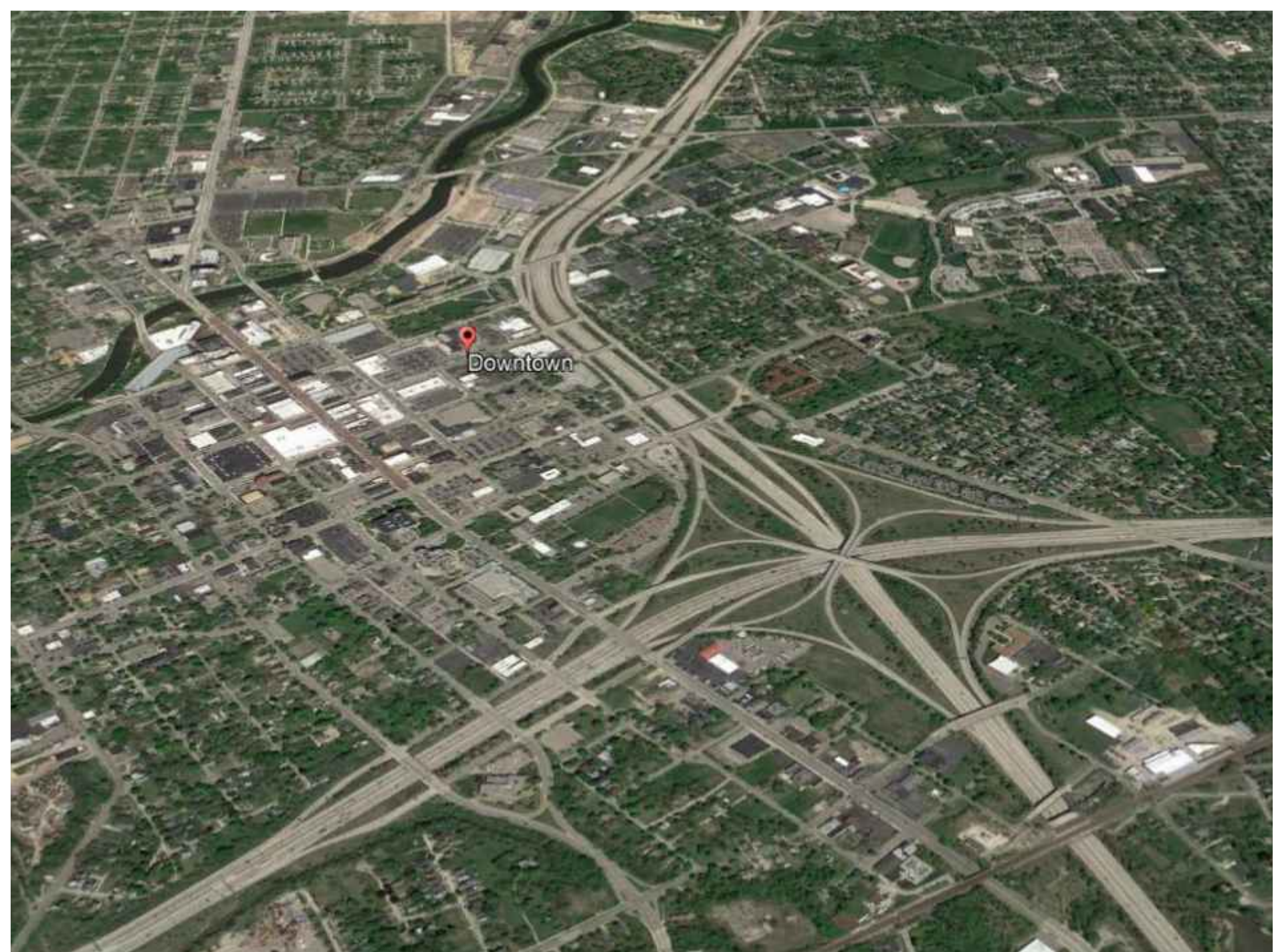
PLANNING AND ENVIRONMENTAL LINKAGES (PEL) STUDY

Project Maps



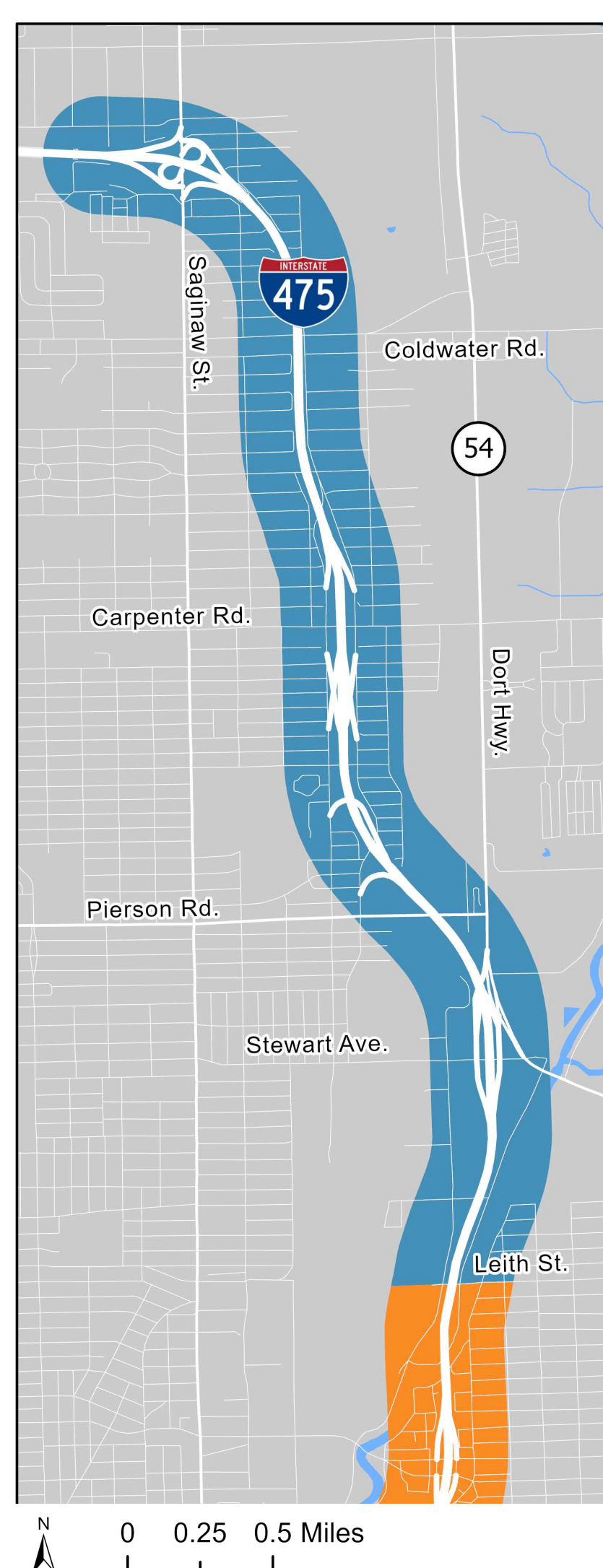
I-475 PEL Study Limits

The study area will span the entire I-475 corridor from the southern I-75 interchange in Grand Blanc Twp. to the northern I-75 interchange near Mt. Morris Twp.

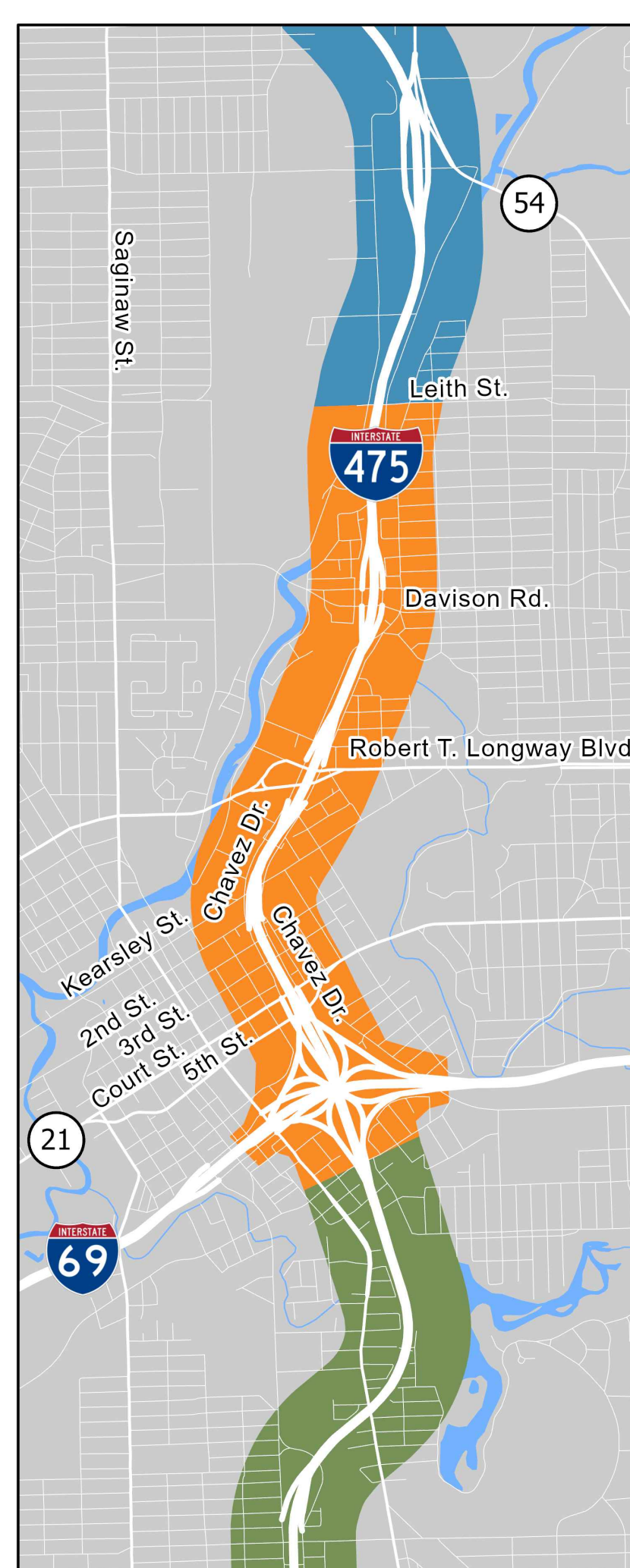


A current aerial shot of the I-475 corridor at the I-69 interchange near downtown Flint.

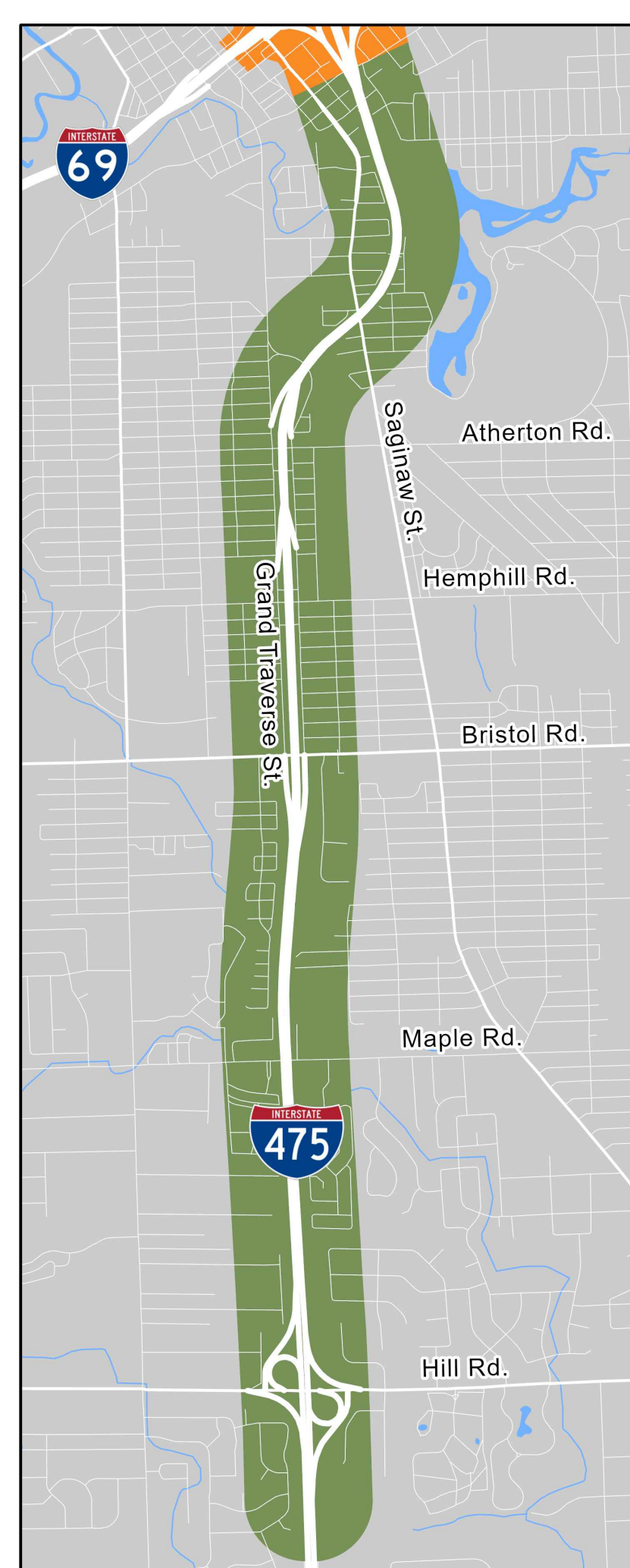
North Segment



Middle Segment



South Segment





PLANNING AND ENVIRONMENTAL LINKAGES (PEL) STUDY

Stay In The Know !

Share feedback and connect with us!

Email us:

MDOT-I475@michigan.gov

Visit the I-475 PEL study
project website:

bit.ly/I-475PEL

Call us: **[517-335-4381](tel:517-335-4381)**



For future updates, we will use the Public Involvement Management Application (PIMA). Sign up for our contact list for opportunities to engage with the I-475 PEL study: **bit.ly/I-475Contact**

Please take our survey at **arcg.is/1188L5** or scan the code with your phone's camera app. All responses received will help with the development of the PEL study.

