



I-475 PEL STUDY PUBLIC MEETING

SEPTEMBER 15, 2021





AGENDA

- MDOT Commitment to Flint Community
- History of I-475
- What is a Planning and Environmental Linkages (PEL) Study?
- PEL Study Schedule and Process
- PEL Study Key Elements
- Anticipated Alternatives Considerations
- Analysis of Social, Economic, and Environmental Impacts
- Next Steps





MDOT'S RECONSTRUCTION OF I-475



PROJECT PROFILES

I-475 Genesee County

Gov. Gretchen Whitmer's Rebuilding Michigan program invests in state highways and bridges critical to the state's economy.

MDOT
Michigan Department of Transportation

- Rebuild 8 miles, including extensive bridge repairs at the I-475/I-69 interchange
- \$300 million investment
- 3,810 jobs supported
- November 2023 - December 2027
- Important route for commuter, commercial, and tourism traffic

Early 2020

----->



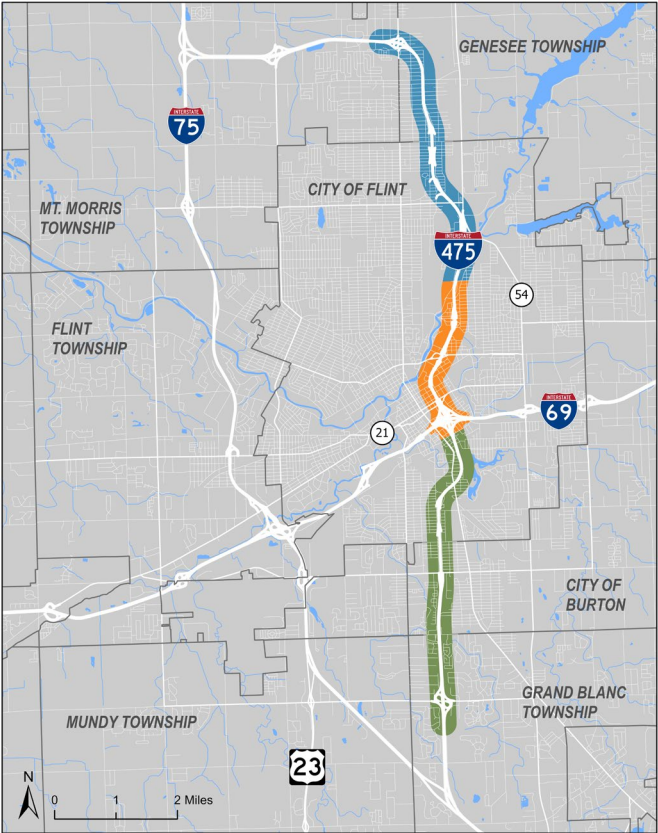


MDOT'S RECONSTRUCTION OF I-475

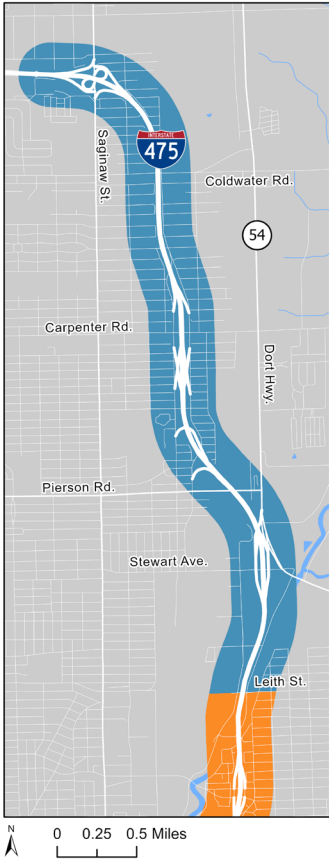
August 2021



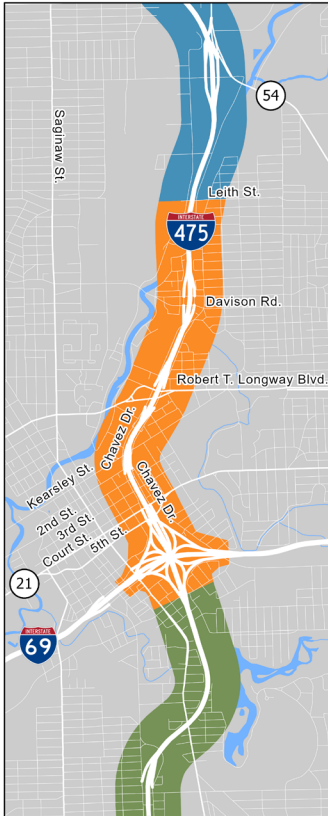
I-475 Project Limits



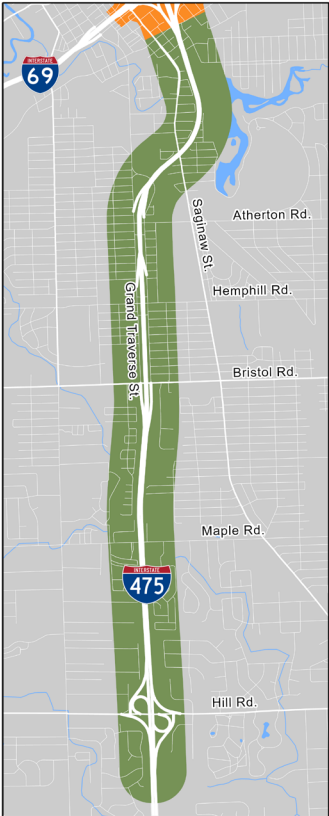
North Segment



Middle Segment



South Segment





HISTORY OF I-475



1936 St. John's neighborhood is wedged between the Flint River on the South and Railroad on the North.
Source: Walter P. Reuther Library, Archives of Labor and Urban Affairs, Wayne State University



Original Right-of-Way map of the Floral Park neighborhood that was demolished for the construction of I-475.





HISTORY OF I-475



Aerial image of I-475 through Flint, MI today

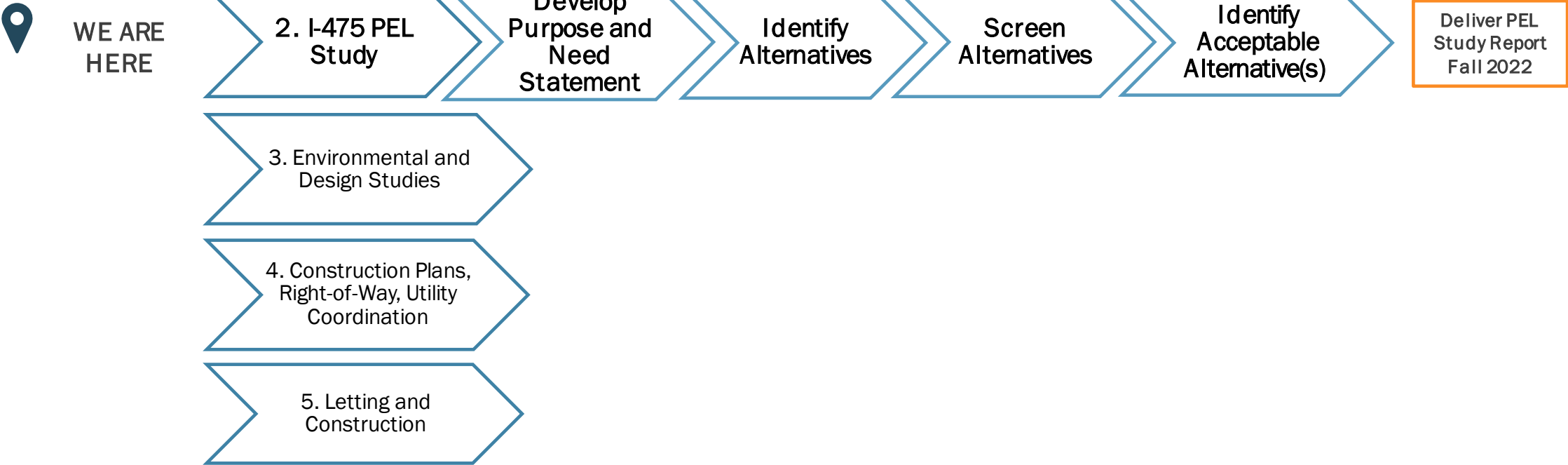


Flint map prior to the construction of I-475. The area outlined in yellow includes the St. Johns neighborhood that was relocated and demolished prior to the construction.





CORRIDOR PROJECT PROCESS





WHAT IS A PEL STUDY?

Planning and Environmental Linkages

- Tool for increased efficiency
- Collaborative approach





WHAT IS A PEL STUDY?

Benefits of a PEL



Combines planning, engineering and initial environmental review



Minimizes duplication by using decisions and analysis to inform NEPA and aligns the project with future requirements



Encourages early, meaningful public engagement by identifying stakeholders, building relationships, and providing opportunities for early engagement in decision making



Promotes environmental stewardship and creates better outcomes for the community



Reduces implementation delays and accelerates project delivery





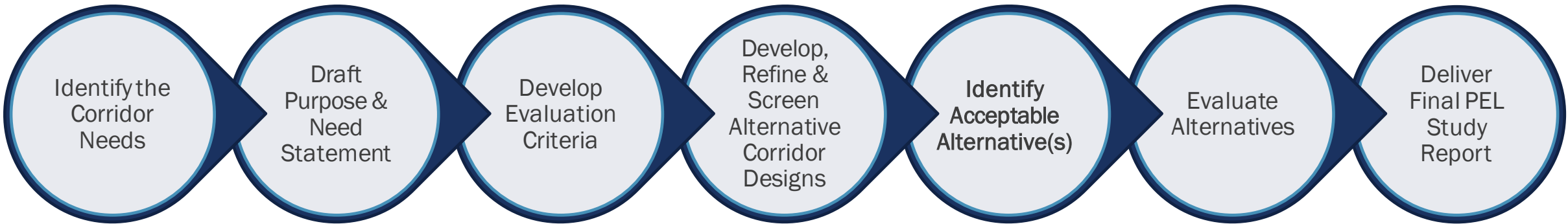
PEL STUDY SCHEDULE AND PROCESS

WE ARE HERE



FALL 2021

FALL 2022



PEL Study Kick-Off
Public Meeting

Public and
Stakeholder
Engagement

LAC/BAC*

LAC/BAC

LAC/BAC

Public Meeting #2

LAC/BAC

Public Meeting #3

*Local and Business Advisory Committee Meetings





ANALYSIS OF SOCIAL, ECONOMIC & ENVIRONMENTAL IMPACTS

- Safety
- Cultural Resource Impacts
- Noise Impacts
- Air Quality Impacts
- Pedestrian and Non-motorized Safety Impacts
- Environmental Justice Impacts
- Social Equity
- Local and Regional Mobility Needs
- Connectivity Benefits for Adjacent Neighborhoods
- Economic Impacts on Local Businesses
- Secondary and Indirect Impacts
- Impacts on Local Emergency Responders
- Consistency with Approved Local Land Uses Plans (Existing and Future)

Outcomes of this screening will be used to identify an acceptable alternative for the I-475 corridor

ACCEPTABLE
ALTERNATIVE(S)

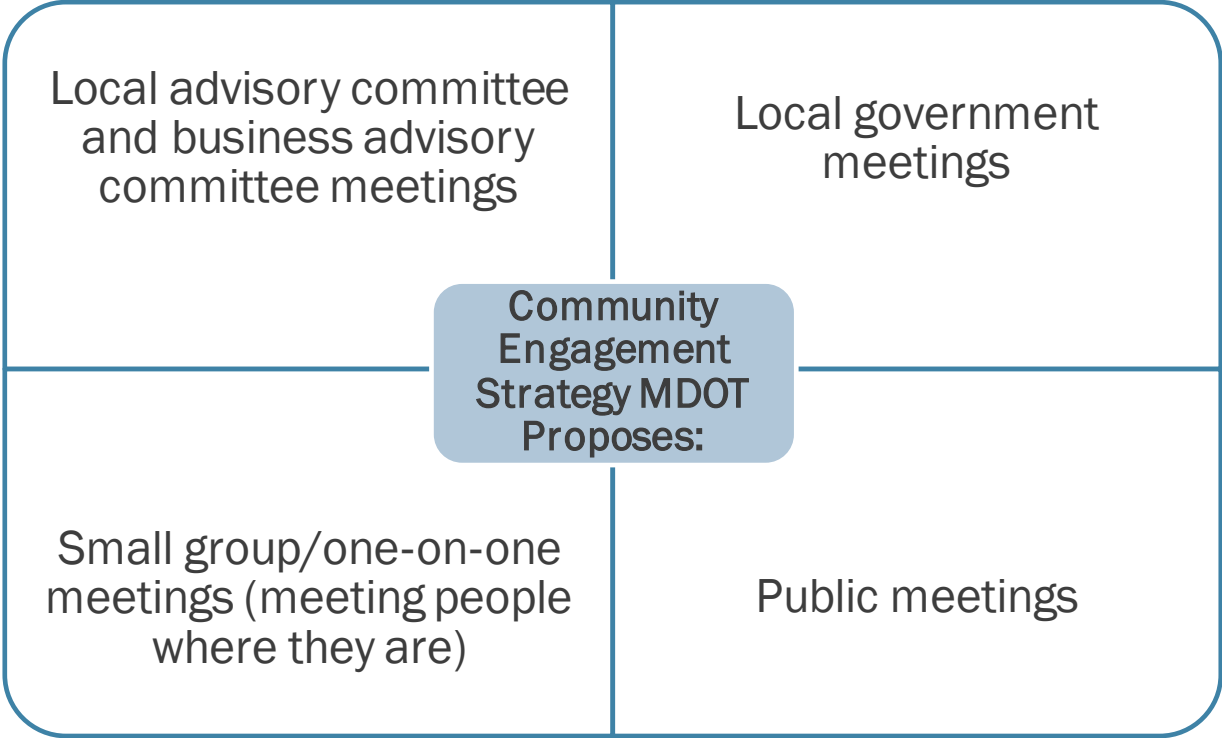




STAKEHOLDER ENGAGEMENT

Key Themes Shared:

- Follow a transparent process to build trust
- Consider needs of all users
- Bring a “human-scale” to Flint
- Identify sustainable solutions that will be longstanding
- Improve safety and reduce speeds
- Remove blight
- Recognize regional transportation needs
- Include all economic sectors





EXISTING CONDITIONS AND STUDY AREA TRENDS



- Poor road and bridge conditions
- Excess capacity (I-475 and adjacent local roads)
- Safety concerns
- Past destruction of neighborhoods
- Limited pedestrian and non-motorized facilities
- Poor connectivity and access





ANTICIPATED PURPOSE & NEED

Preliminary Purpose Elements

- Address deteriorating system infrastructure condition
- Prioritize the movement of people including accommodating safer non-motorized travel
- Connect neighborhoods with cultural, institutional and commercial activity centers
- Create greater opportunities for economic development that support adopted master and land use plans

Preliminary Needs Statements

- Deteriorated bridges and pavement conditions that are at the end of their useful life
- Infrastructure that is overbuilt for today's declined population and community needs, resulting in areas of underutilized paved spaces
- Lack of direct connection between the Central Neighborhood District and Downtown





ANTICIPATED ALTERNATIVES TO BE CONSIDERED

Building new community crossing bridges



Proposed 2nd Street Community Bridge in Detroit



Cesar Chavez over I-35 Concept in Austin



15th Street over I-35 Concept in Austin

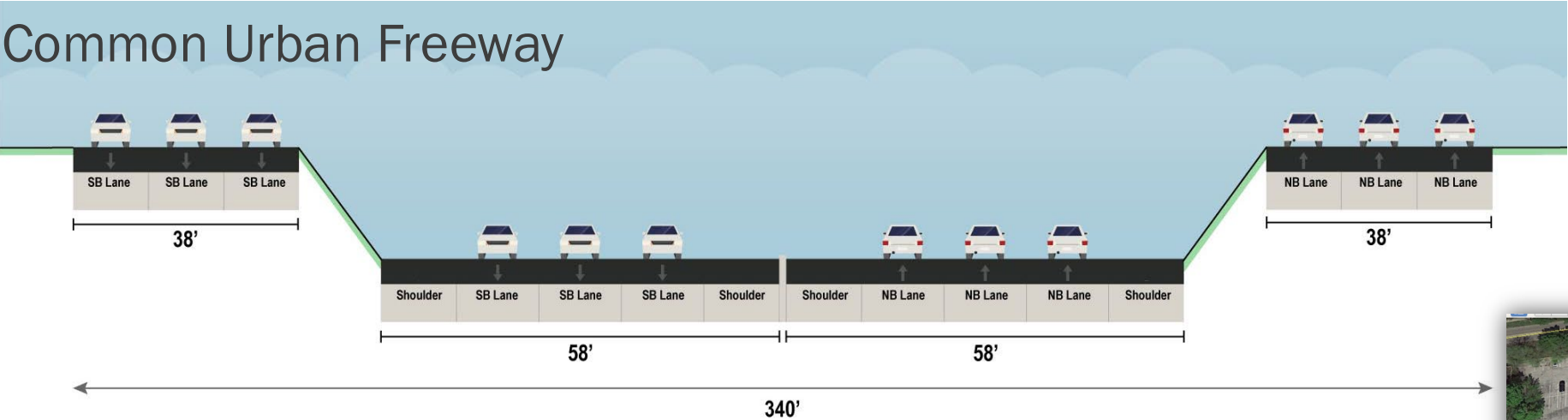




ANTICIPATED ALTERNATIVES TO BE CONSIDERED

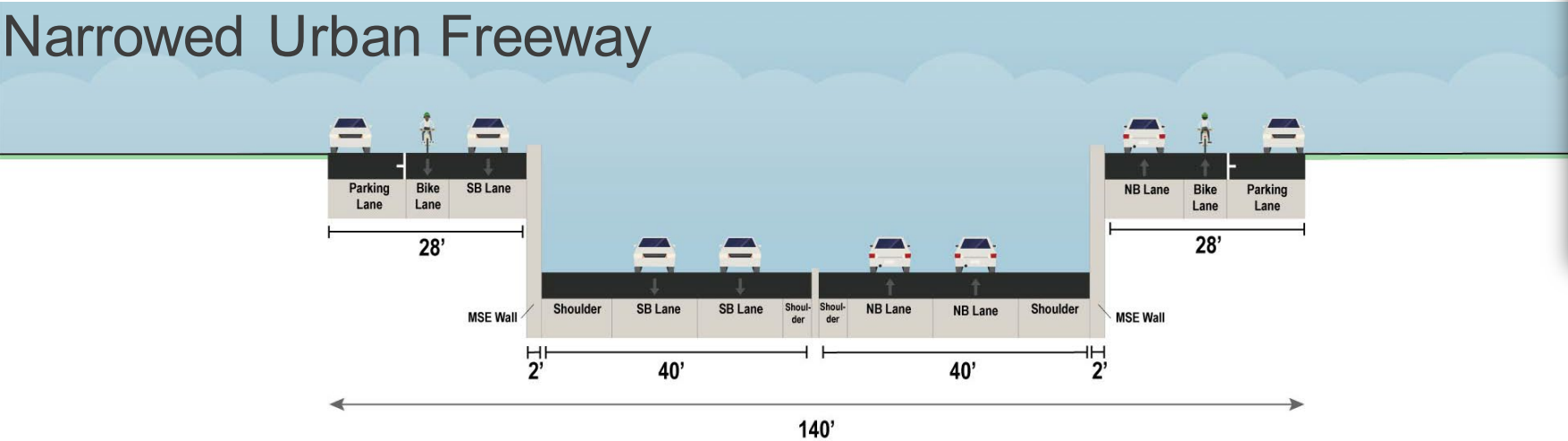


Common Urban Freeway



Narrowing I-475 and adjacent service drives

Narrowed Urban Freeway





ANTICIPATED ALTERNATIVES TO BE CONSIDERED

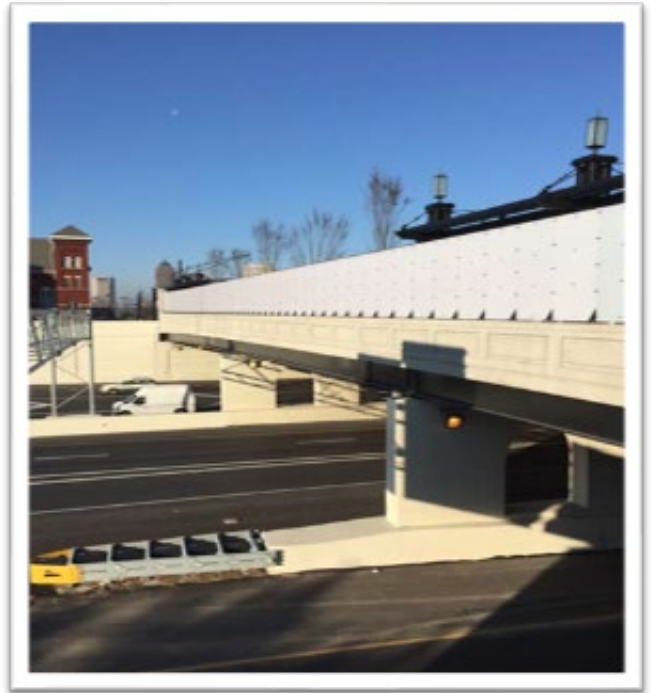
Constructing a cap over I-475



Cap at Union Station, Columbus, OH



Cap at Union Station – High Street
over I-670, Columbus, OH



Cap at Long Street over I-71,
Columbus, OH





ANTICIPATED ALTERNATIVES TO BE CONSIDERED

Converting I-475 to an at-grade urban boulevard

Before



After





ANTICIPATED ALTERNATIVES TO BE CONSIDERED

Interchange Enhancements & Modernizations



Diverging Diamond Interchange Example




Roundabout Interchange Example





WHAT HAPPENS AFTER THE PEL STUDY?

Anticipated Next Steps

 PEL STUDY PUBLISHED WITH ACCEPTED ALTERNATIVE(S) IDENTIFIED IN FALL 2022



THEN WORK BEGINS TO CREATE A DESIGN AND CONSTRUCTION TIMELINE

Action	Middle Segment	North and South Segments
PEL Study	Fall 2021 - Fall 2022	
NEPA*/Design <small>*National Environmental Policy Act</small>	Fall 2021 - Summer 2023	Spring 2022 – Spring 2023
Final Design	Summer 2023 - Fall 2025	Spring 2023
Potential Letting	Fall 2025	Fall 2023 (FY 2024)
Construction	Spring 2026	Spring 2024
Open for Traffic	Fall 2028	Fall 2026





STAY IN THE KNOW – SHARE FEEDBACK AND CONNECT



Email us at MDOT-I475@michigan.gov

Visit the I-475 PEL study project website at bit.ly/I-475PEL

Call us at 517-335-4381

For future updates, we will use the Public Involvement Management Application. Sign up for our contact list for opportunities to engage with the I-475 PEL study: bit.ly/I475Subscribe





THANK YOU FOR JOINING

CONTACT US: MDOT-I475@MICHIGAN.GOV

