

M-17 PEL Study

Local Advisory Group
Meeting 2
1/18/23



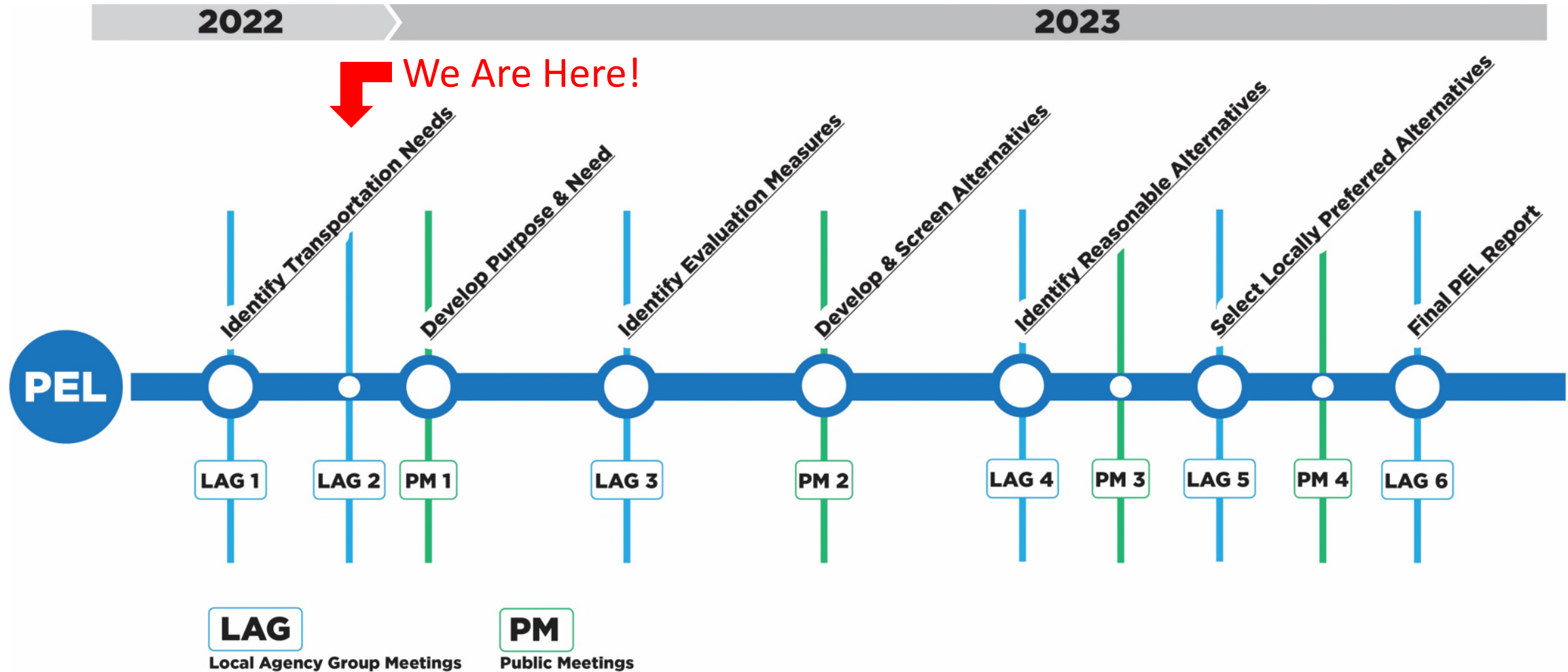
Agenda

- Welcome and Introductions
- PEL Study Update
 - Existing Conditions Review
 - Crash Analysis
 - Draft Purpose and Need
- Activity: What are the current transportation issues along M-17?
- Discussion: What goals do you have for the PEL Study?



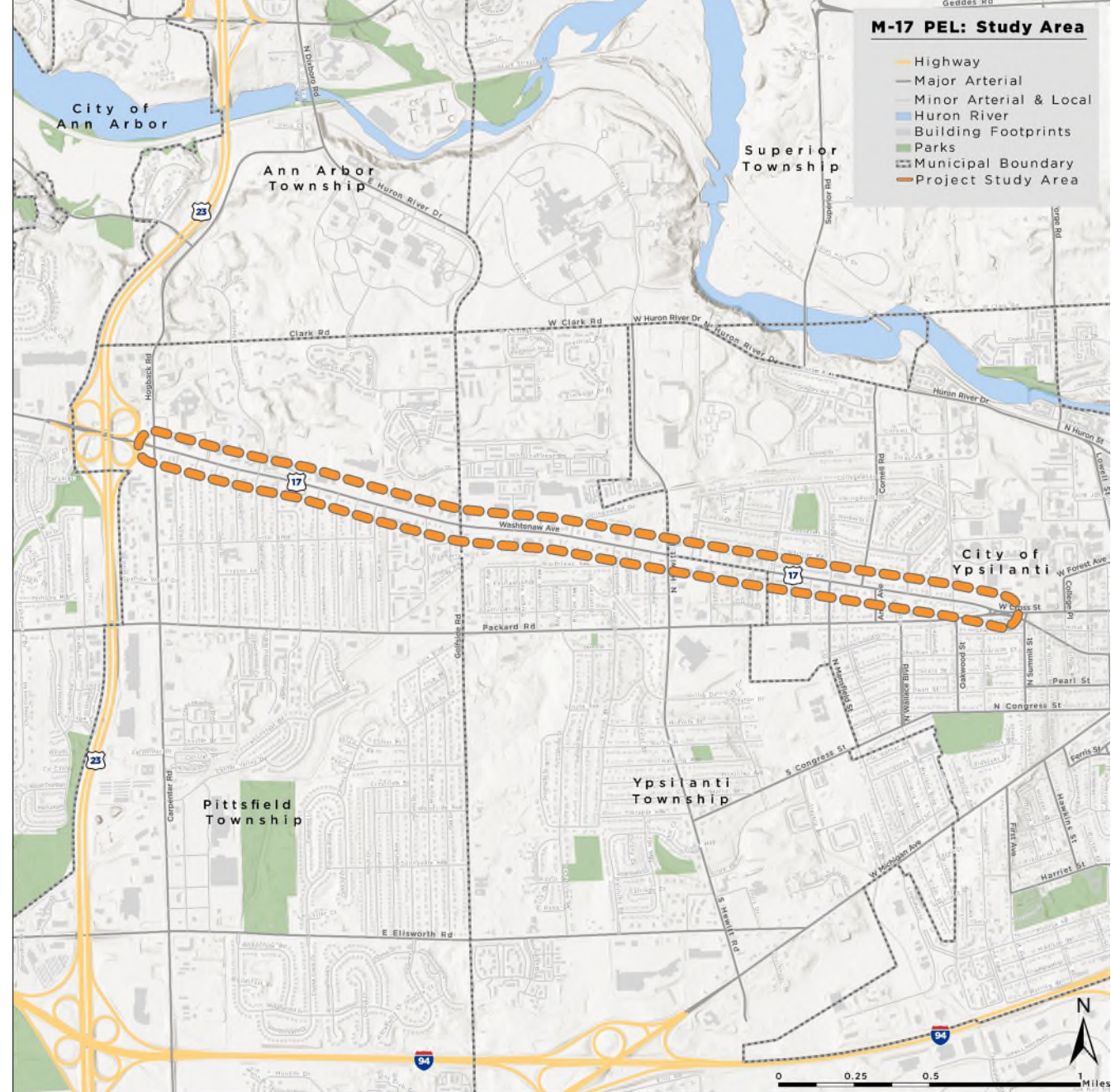
PEL Study Update

Project Timeline



Project Study Area

- PEL Project Area – Washtenaw from Carpenter to Summit
- Planning Study Area – area bounded by the Huron River, US-23, I-94, and Huron St

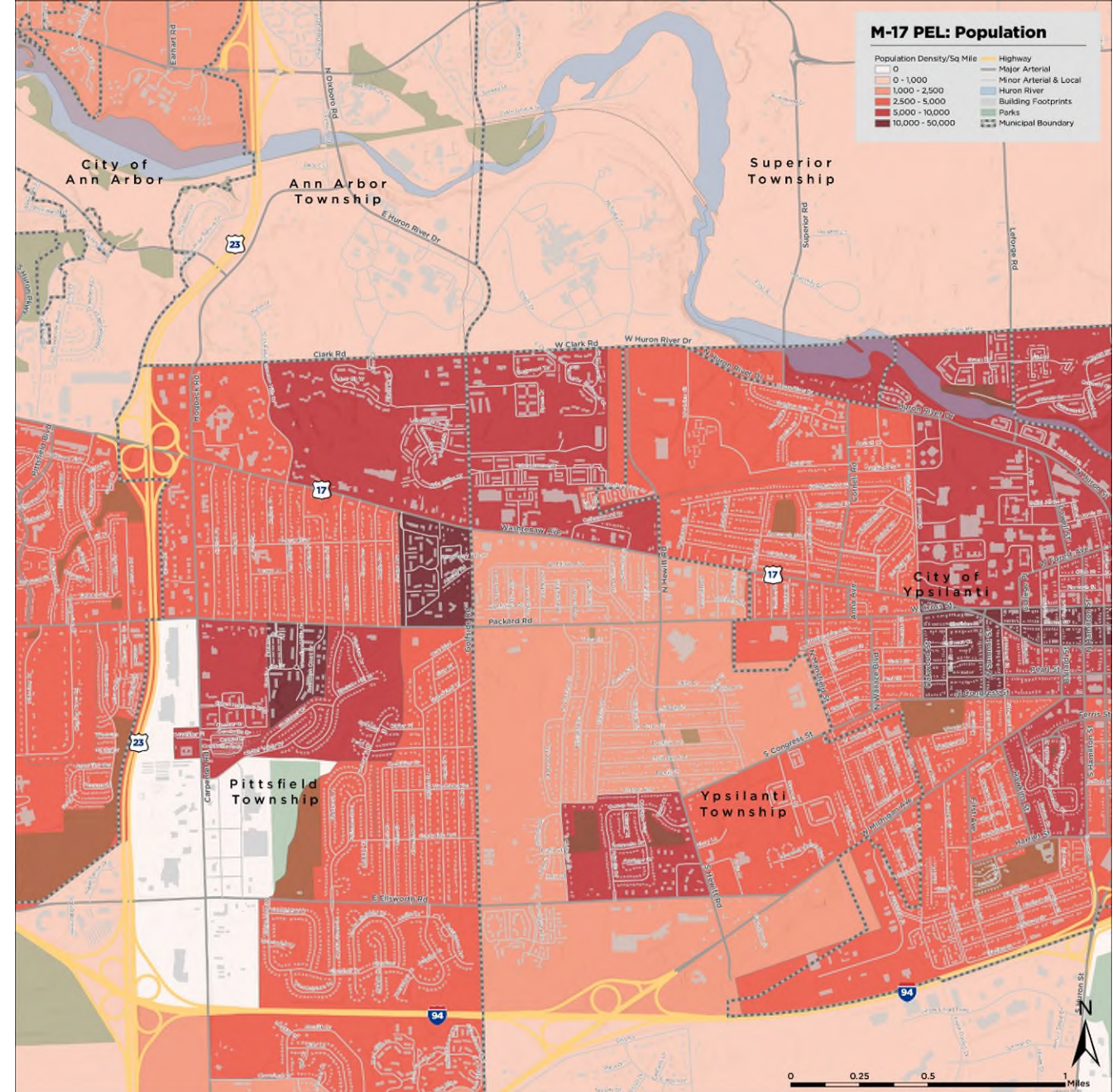


Existing Conditions Analysis

- Review of data within the Planning Study Area to better understand how people may be using Washtenaw
- Analyzed the following at the block group level:
 - Demographics
 - Land Use
 - Multi-Modal Transportation Conditions
- Previous Planning Review

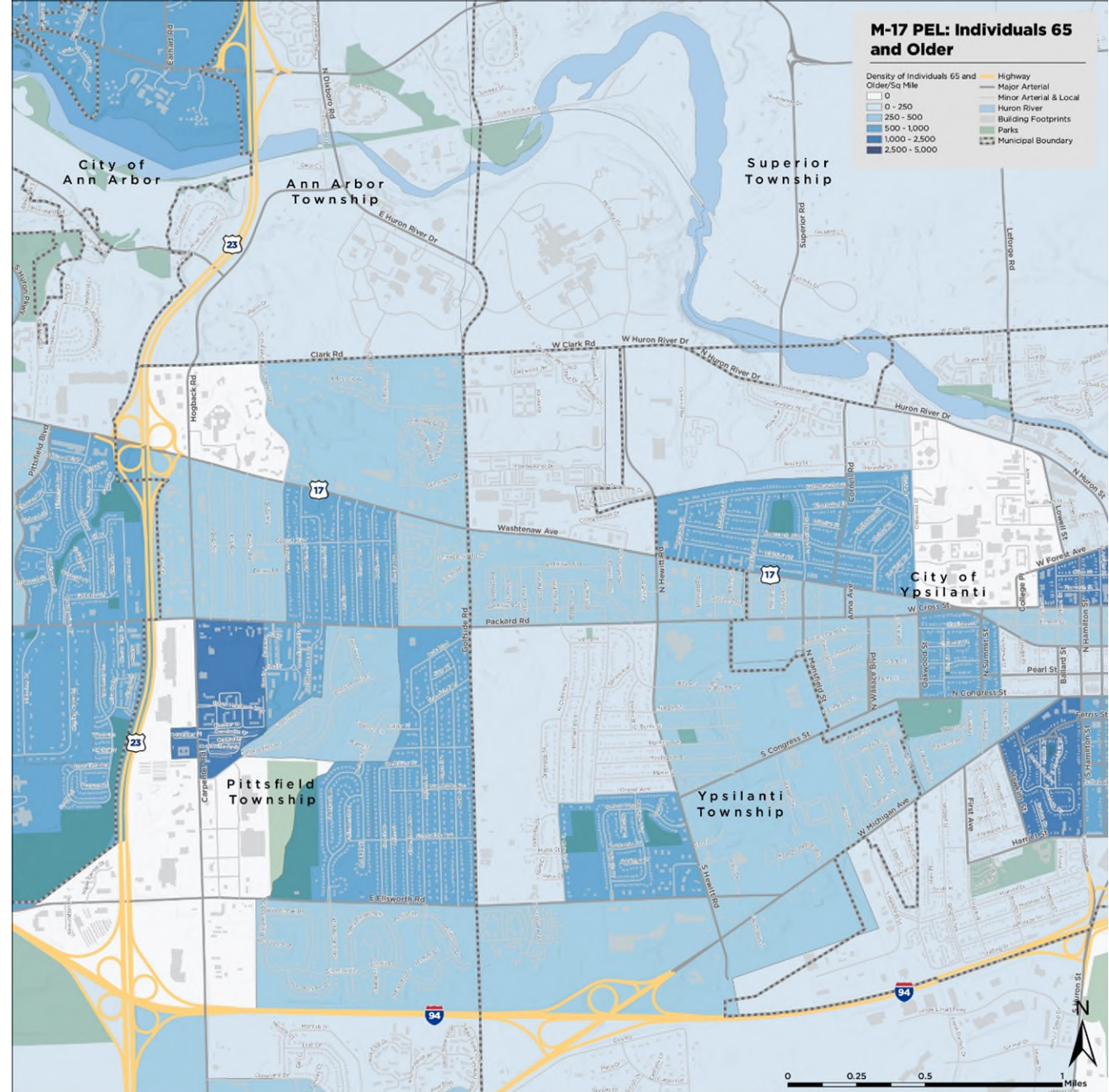
Population Density

- Density varies throughout the corridor
- Highest levels are within the City of Ypsilanti and at Golfside Rd



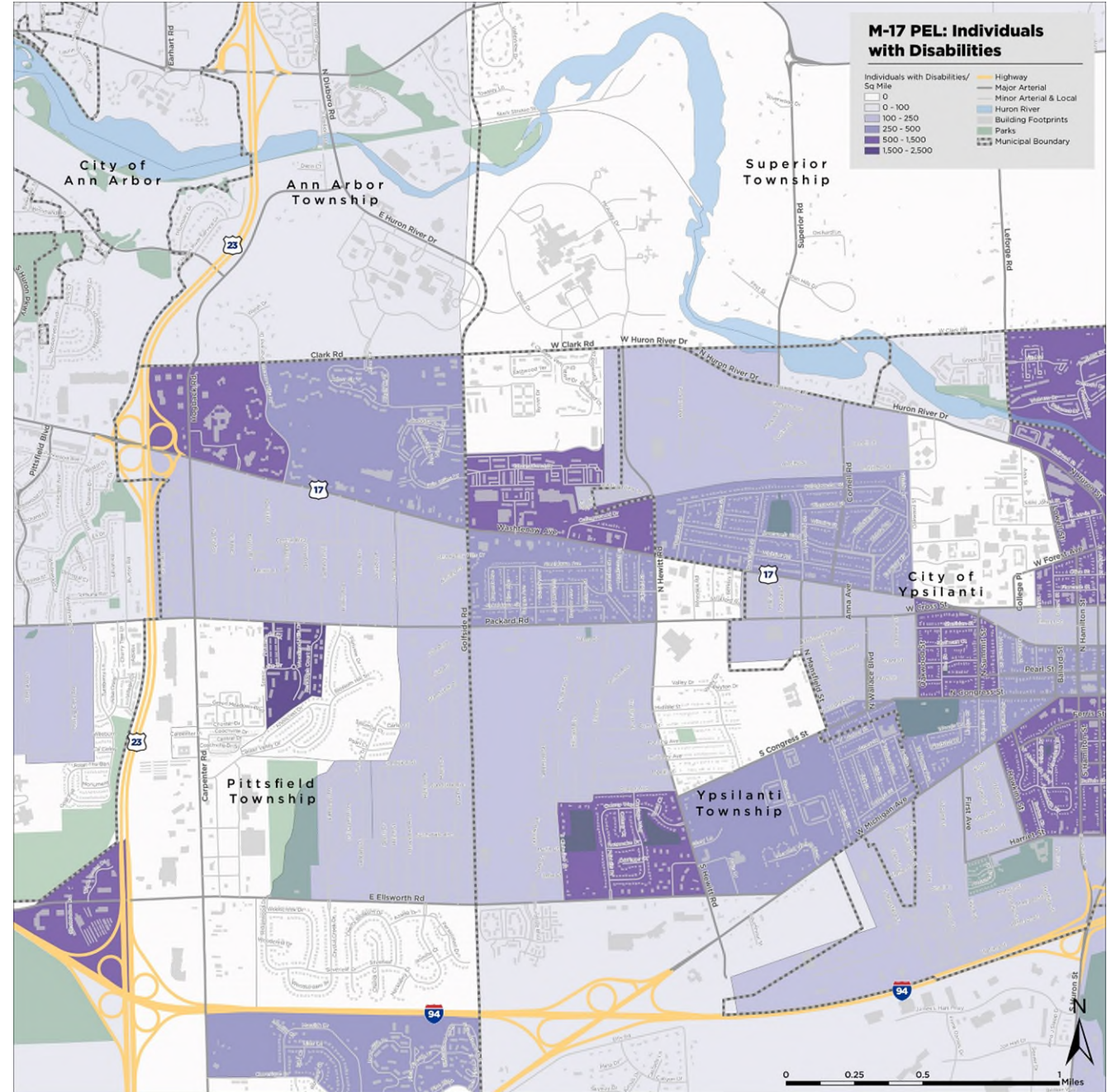
Senior Population Density

- Some portions of the planning area have no seniors
- Highest density areas are between Hewitt and Oakwood, and south of the corridor along Carpenter



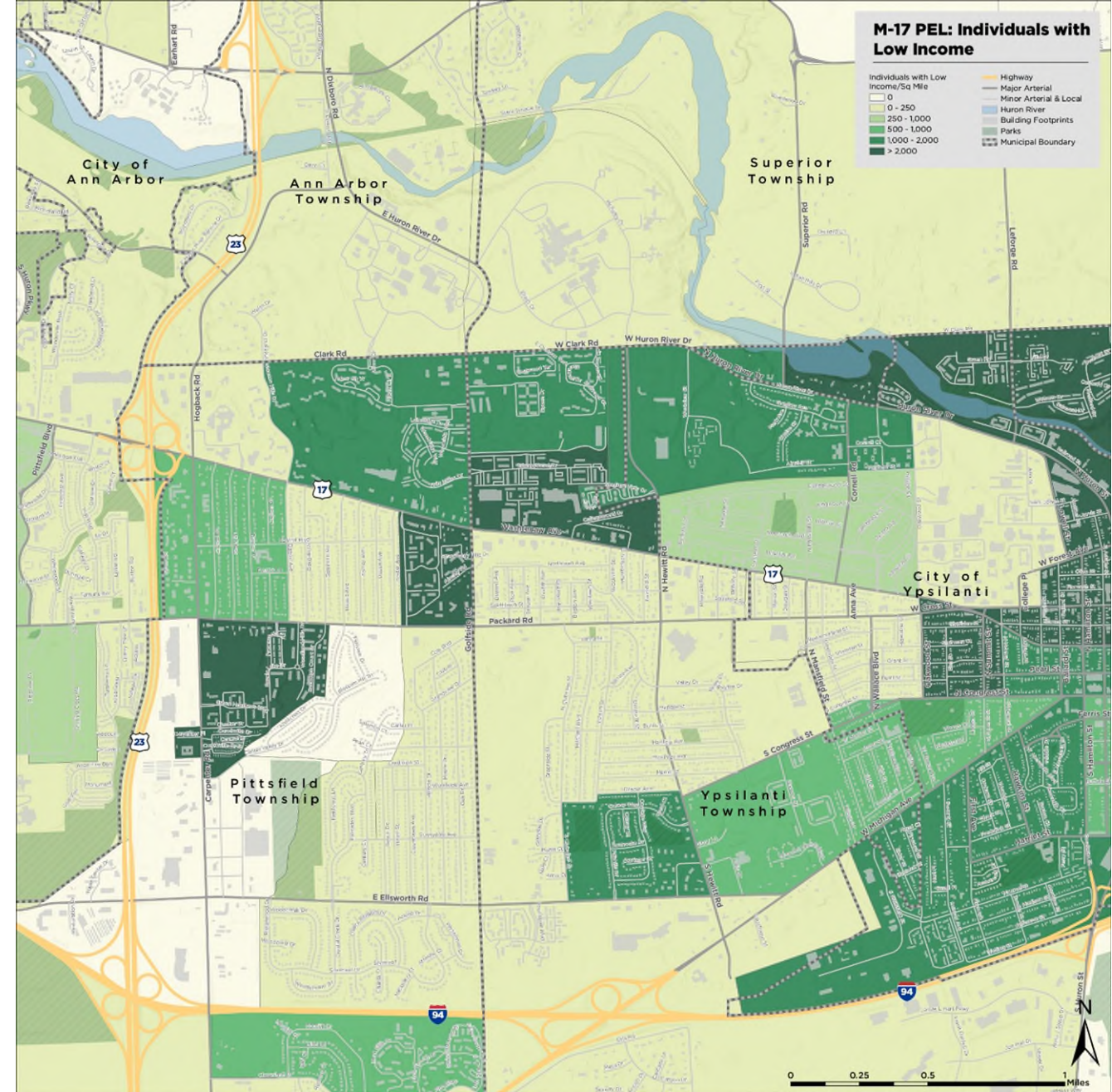
Individuals with Disabilities

- Block groups with high densities located at Carpenter, Golfside, and Oakwood
- Many apartments and higher density housing in these areas



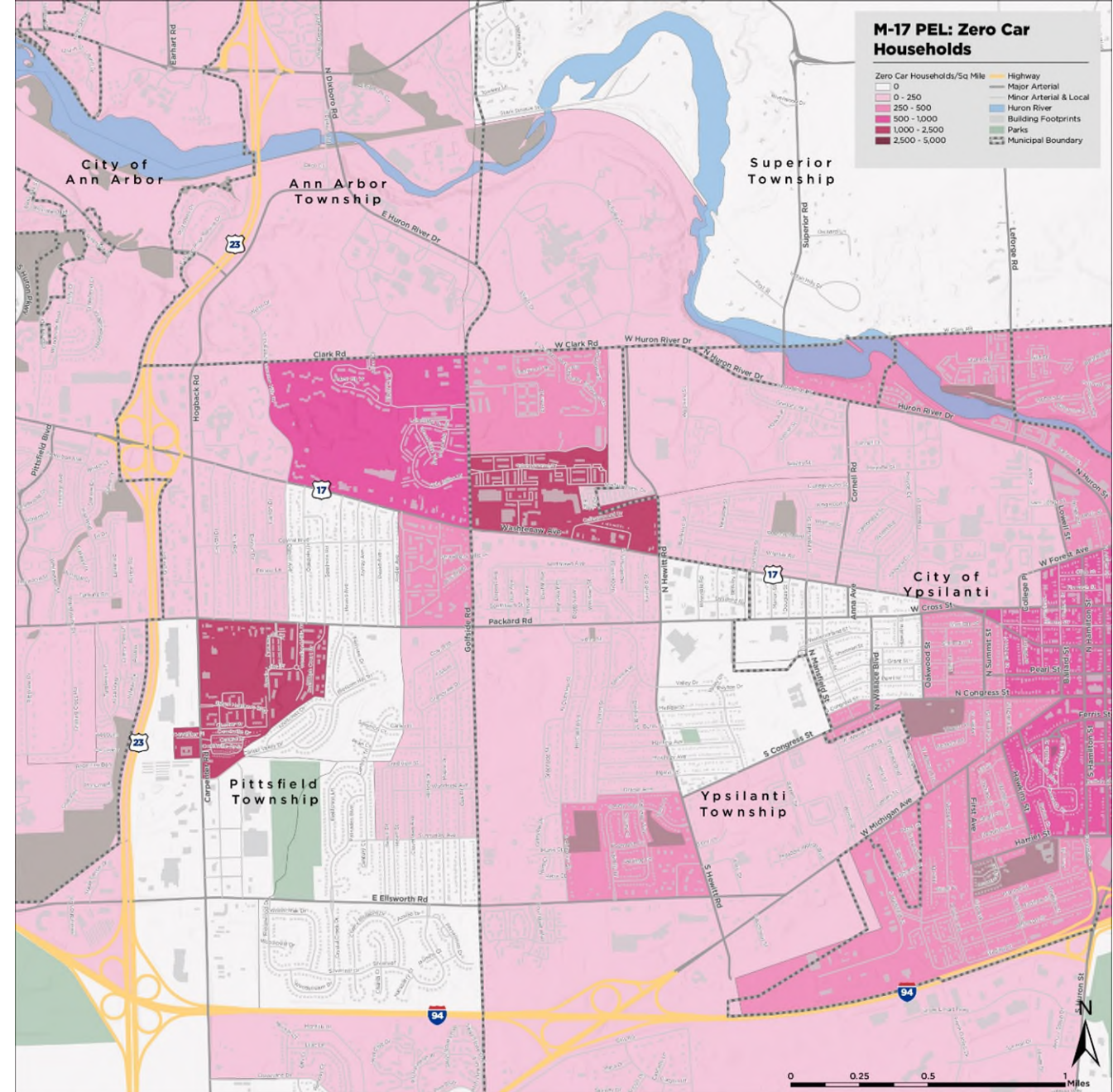
Individuals Living Below the Poverty Line

- Area surrounding Golfside intersection is home to highest number of people living below the poverty line
- Central Ypsilanti is other high-density area



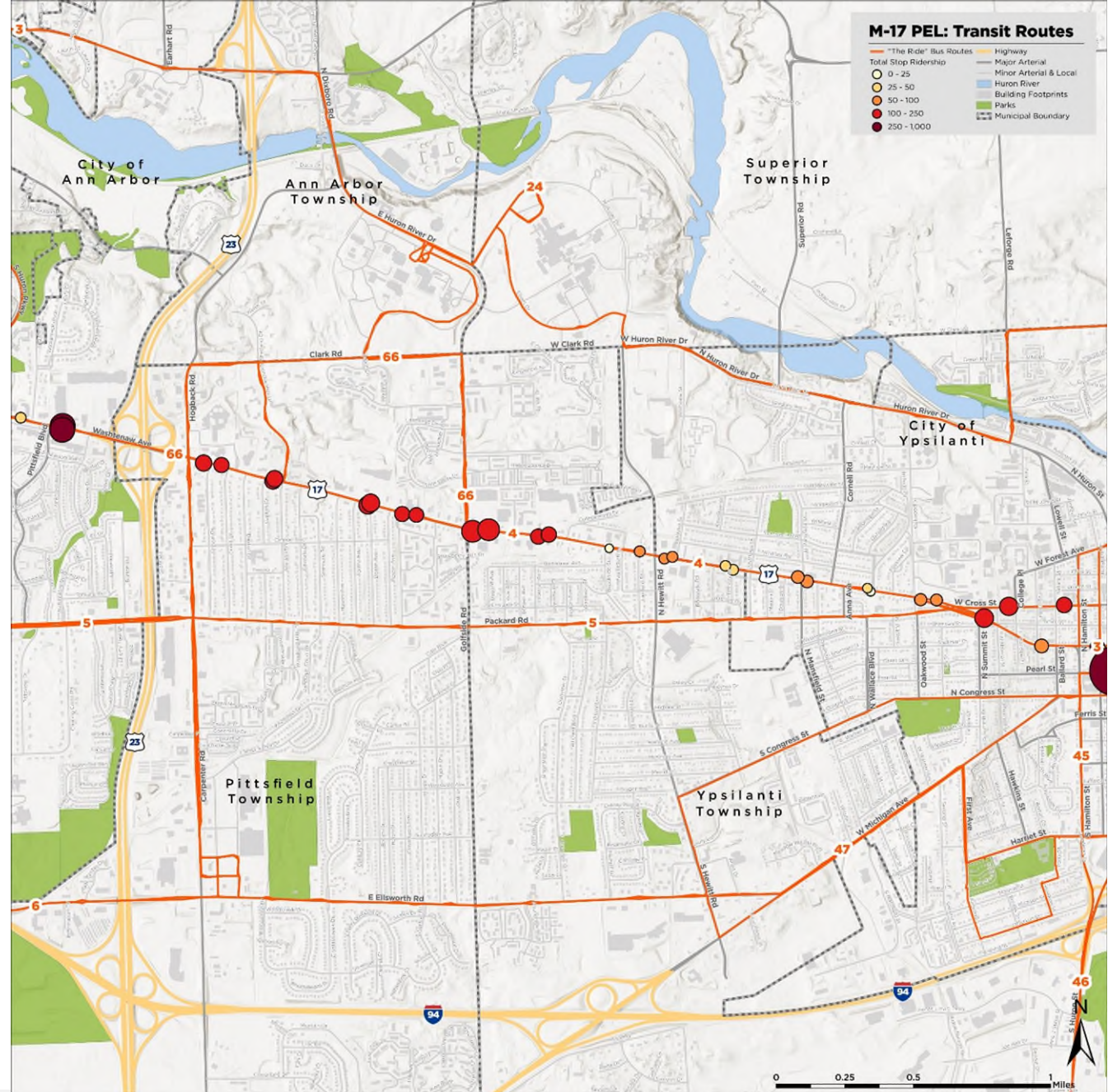
Zero Car Households

- Area around the Golfside intersections also home to highest density of Zero Car Households
- Some portions of corridor have no Zero Car Households



Transit Routes & Ridership

- Route 4 – Washtenaw connects Ann Arbor and Ypsilanti
- High ridership locations at the following:
 - Downtown Ypsilanti
 - Golfside Rd
 - Glencoe Hills Dr
 - County Service Center



Key Findings

- The 4 major intersections – Carpenter, Golfside, Hewitt, & Oakwood – are important from a connectivity standpoint
- The Golfside Road area appears to be the area with the most potential need:
 - High population density and other demographic measures
 - High transit ridership
 - High potential for multi-modal use
 - Development plans



Corridor Tour

Corridor Tour

- Project team participated in a corridor tour following the previous LAG meeting
- Broke into groups to experience Washtenaw Ave on different modes:
 - Driving
 - Walking
 - Bicycling
 - Riding the Bus
- Debriefed following the tour to talk about observations



Observations

- Not a comfortable or safe place to ride a bike
- Lots of missing sidewalk connections or connections through parking lots
- Driving was comfortable with minimal traffic/congestion – although we were out outside of rush hour
- The bus was frequent and quick, with most people traveling into Ann Arbor
- The pavement in many areas needs replacement
- Lots of curb cuts and driveways





Crash Analysis

Crash Analysis Findings

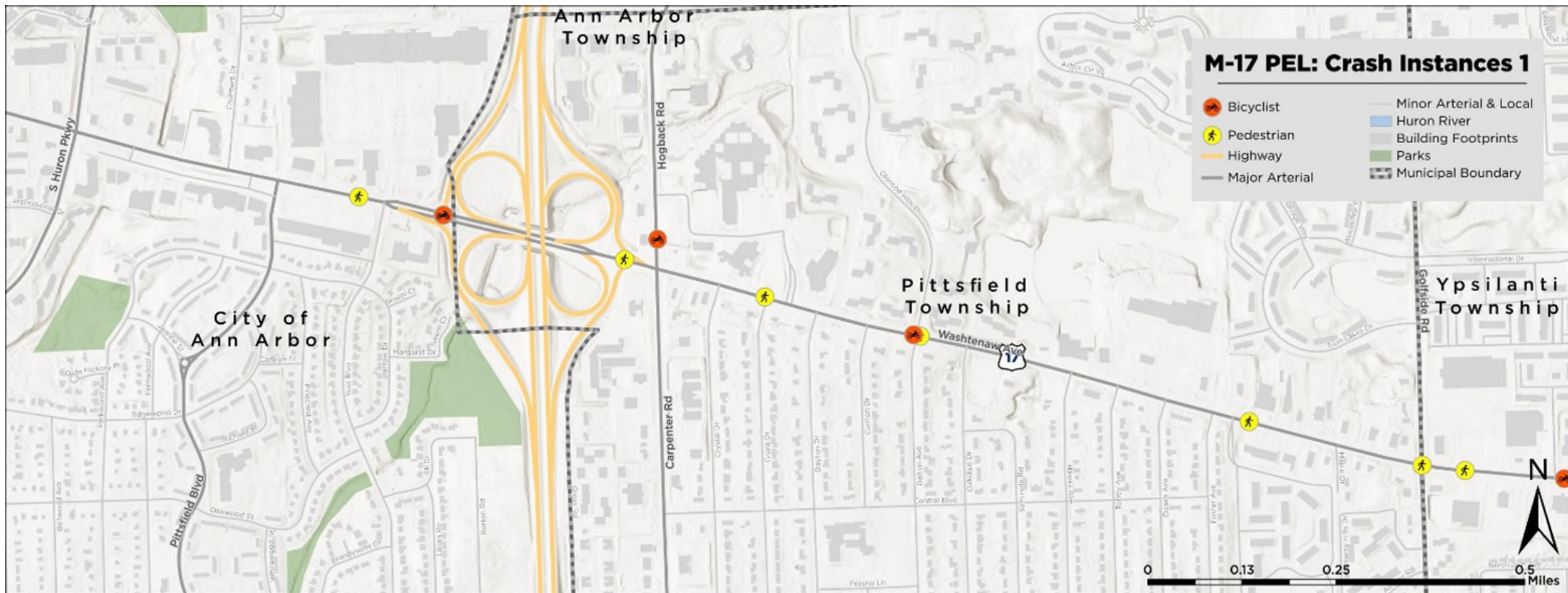
- **912 Crashes** recorded between 2019 and 2021
- **189 (21%)** resulted in an injury
- **16** pedestrian and **8** bike crashes
- No fatalities
- Most crashes were **rear end** (46%)
- Most common contributing factors were **speeding** and **failing to yield**



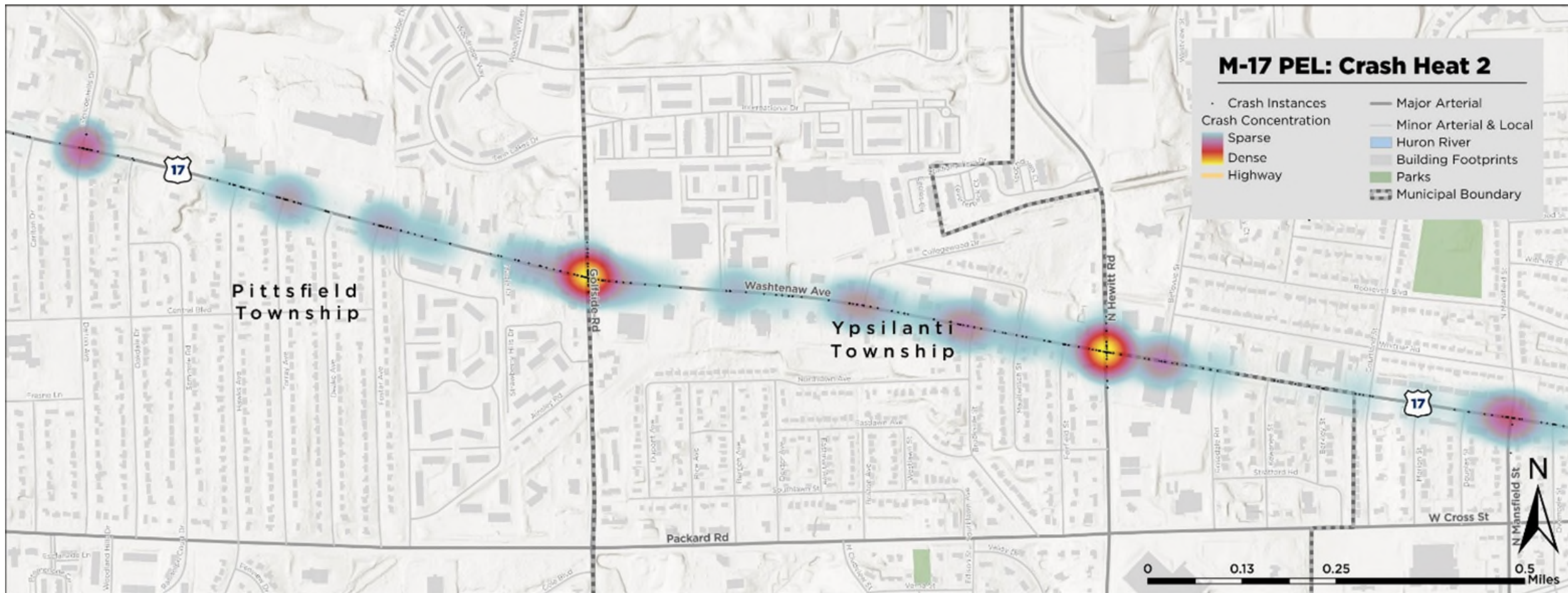
Segment 1 – All Crashes



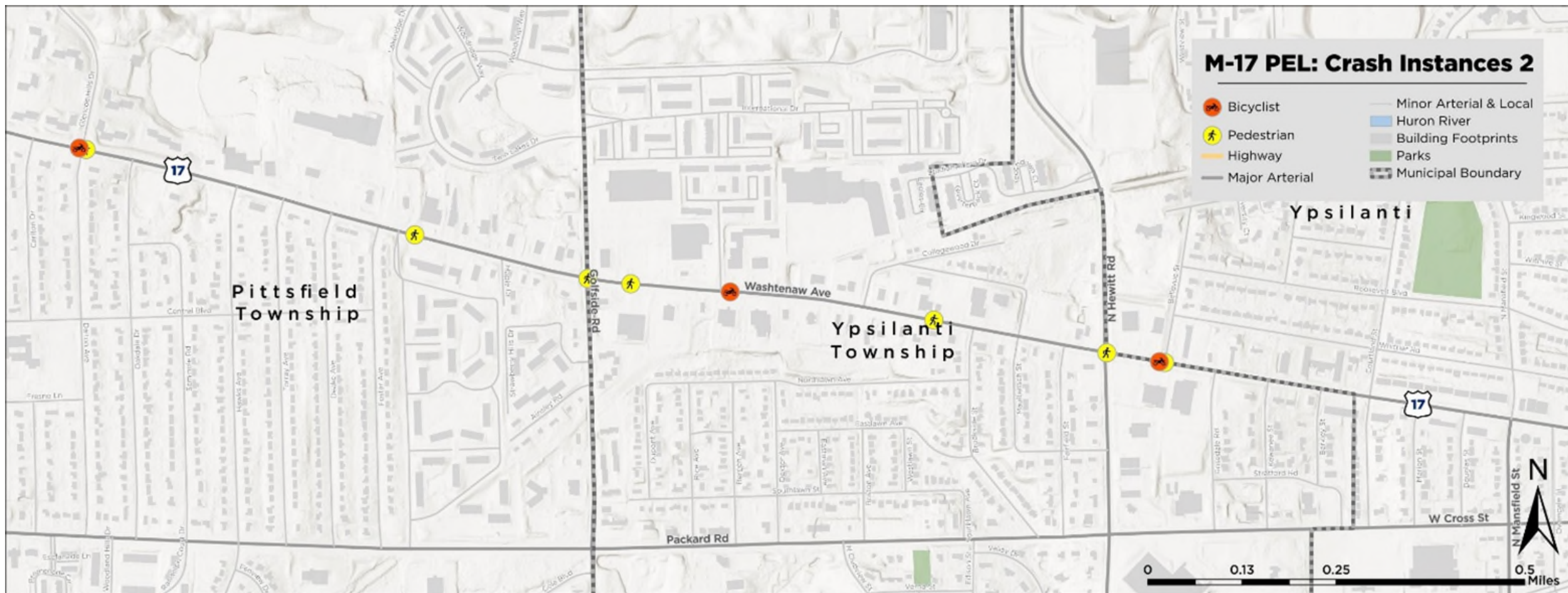
Segment 1 – Bike/Ped Crashes



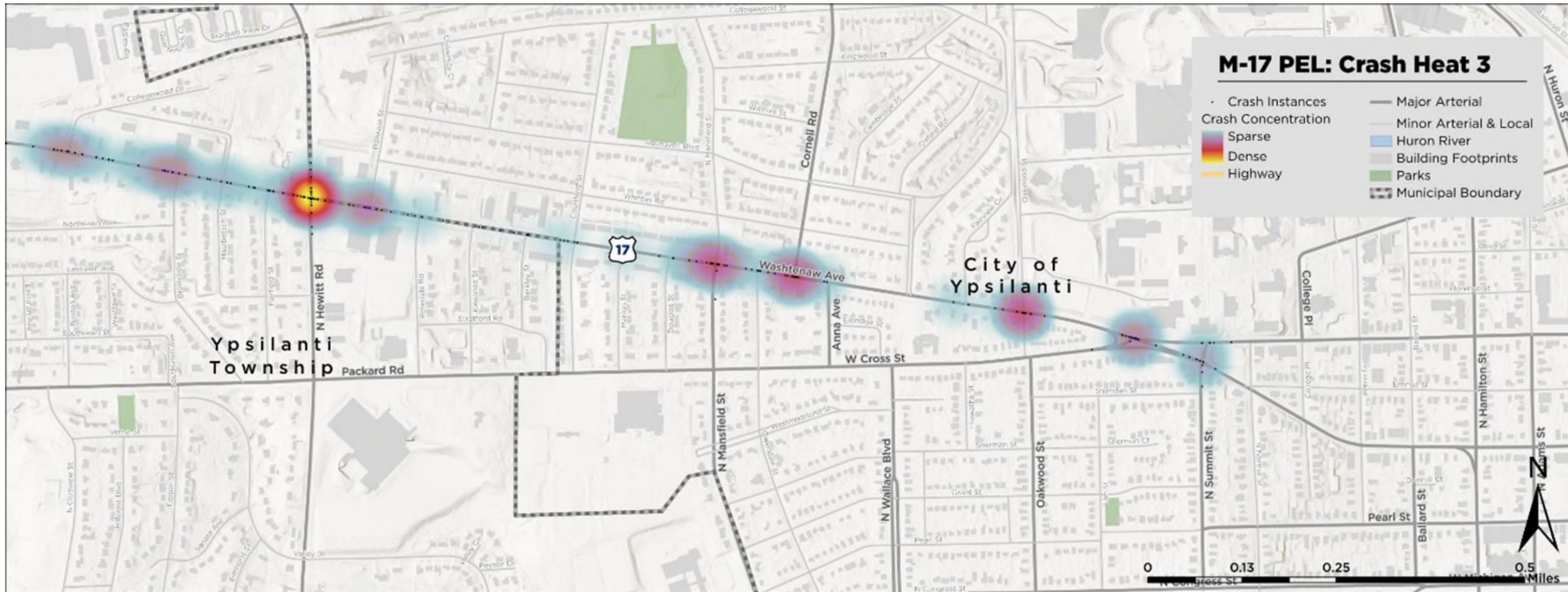
Segment 2 – All Crashes



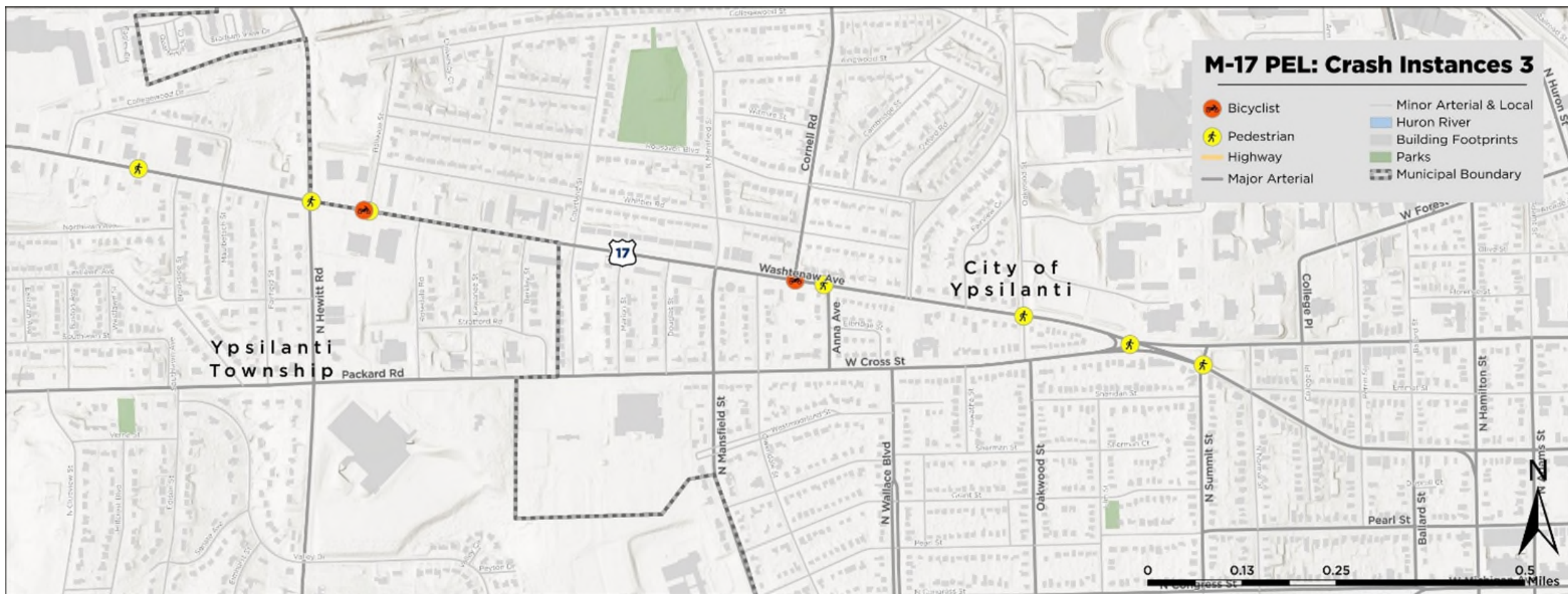
Segment 2 – Bike/Ped Crashes



Segment 3 – All Crashes



Segment 3 – Bike/Ped Crashes





Purpose & Need

What is the Purpose & Need?

- One of the first major steps in the PEL process
- Identifies the problems that need to be addressed through the Study
- Provides a guiding vision for alternatives development and evaluation
- Identifies the overall vision for future projects
- Clearly and concisely lays out the community's goals for the project

Draft Purpose & Need

The purpose of the Washtenaw Avenue Planning and Environmental Linkages (PEL) Study is to create a connected, multi-modal corridor that promotes safe, comfortable, and equitable access for all modes of travel while fostering the economic, institutional, and environmental goals of the adjacent communities.

Small Group Activity

What are the current transportation issues along Washtenaw Avenue for each mode?

- Spend 15 minutes at each station and discuss the needs for the various users of Washtenaw Avenue.
- Each station is specific to a travel mode – walking, biking, riding transit, or driving
- After rotating through each station, we will debrief with the larger group

Discussion

What Goals Do You Have for the Washtenaw Avenue PEL Study?

What challenges do you currently experience along Washtenaw Avenue?

What opportunities do you see to make Washtenaw Avenue a great multi-modal street?

Next Steps

- Public Meeting 1
 - Targeting the second half of February
- Traffic Modeling and Analysis
- Finalize Purpose & Need
- Development of Alternatives
- LAG Meeting 3 – Mid March