



LEGEND

- APPROXIMATE SITE LIMITS
- STREAM/RIVER
- WETLANDS DELINEATED BY DLZ
- MDOT
- POTENTIAL WETLAND AREA
- 35 FOOT IMPACT BUFFER
- CULVERT



REFERENCE


1. AERIAL IMAGERY: NEARMAP IMAGERY SERVICE. COPYRIGHT NEARMAP 2023. IMAGERY CAPTURED THROUGH THE FOLLOWING DATES: 3/26/2023, 3/28/2023, 4/7/2023, 6/10/2023, & 6/17/2023.

2. STREAMS DATASET: NATIONAL HYDROGRAPHY DATASET (NHD), USGS.

CLIENT
MICHIGAN DEPARTMENT OF TRANSPORTATION (MDOT)

PROJECT
I-94 CONNECTED AND AUTOMATED VEHICLE CORRIDOR PROJECT

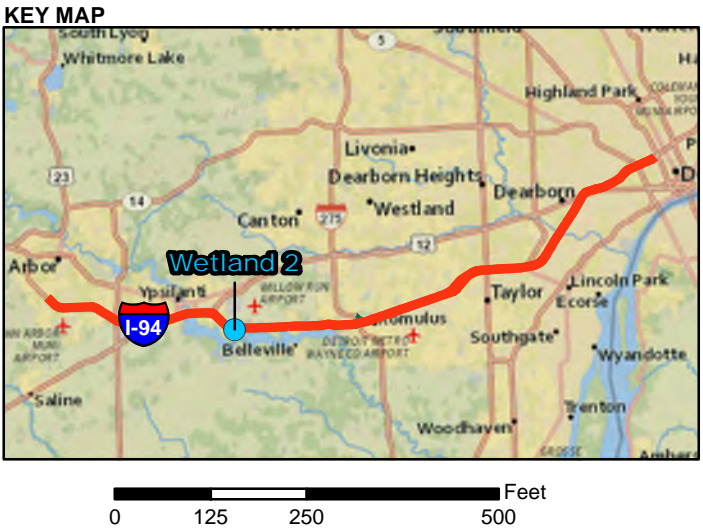
TITLE
POTENTIAL WETLANDS DETAIL MAP
1 OF 35

	CONSULTANT	YYYY-MM-DD	2023-12-04
	PREPARED		RHG
	DESIGN		RHG
	REVIEW		-
	APPROVED		-



LEGEND

- APPROXIMATE SITE LIMITS
- STREAM/RIVER
- WETLANDS DELINEATED BY DLZ
- MDOT
- POTENTIAL WETLAND AREA
- 35 FOOT IMPACT BUFFER
- CULVERT



REFERENCE

1. AERIAL IMAGERY: NEARMAP IMAGERY SERVICE. COPYRIGHT NEARMAP 2023. IMAGERY CAPTURED THROUGH THE FOLLOWING DATES: 3/26/2023, 3/28/2023, 4/7/2023, 6/10/2023, & 6/17/2023.

2. STREAMS DATASET: NATIONAL HYDROGRAPHY DATASET (NHD), USGS.

CLIENT

MICHIGAN DEPARTMENT OF TRANSPORTATION (MDOT)

PROJECT

I-94 CONNECTED AND AUTOMATED VEHICLE CORRIDOR PROJECT

TITLE

POTENTIAL WETLANDS DETAIL MAP
2 OF 35

	CONSULTANT	YYYY-MM-DD	2023-12-04
	PREPARED		RHG
	DESIGN		RHG
	REVIEW		-
	APPROVED		-



LEGEND

APPROXIMATE SITE LIMITS

STREAM/RIVER

WETLANDS DELINEATED BY DLZ

MDOT

POTENTIAL WETLAND AREA

35 FOOT IMPACT BUFFER

CULVERT



REFERENCE

1. AERIAL IMAGERY: NEARMAP IMAGERY SERVICE. COPYRIGHT NEARMAP 2023. IMAGERY CAPTURED THROUGH THE FOLLOWING DATES: 3/26/2023, 3/28/2023, 4/7/2023, 6/10/2023, & 6/17/2023.

2. STREAMS DATASET: NATIONAL HYDROGRAPHY DATASET (NHD), USGS.

CLIENT

MICHIGAN DEPARTMENT OF TRANSPORTATION (MDOT)

PROJECT

I-94 CONNECTED AND AUTOMATED VEHICLE CORRIDOR PROJECT

TITLE

POTENTIAL WETLANDS DETAIL MAP
3 OF 35

<div>CONSULTANT</div> <div><div>wsp</div></div>	YYYY-MM-DD	2023-12-04
	PREPARED	RHG
	DESIGN	RHG
	REVIEW	-
	APPROVED	-



LEGEND

- APPROXIMATE SITE LIMITS
- STREAM/RIVER
- WETLANDS DELINEATED BY DLZ
- MDOT
- POTENTIAL WETLAND AREA
- 35 FOOT IMPACT BUFFER
- CULVERT

KEY MAP



REFERENCE

- AERIAL IMAGERY: NEARMAP IMAGERY SERVICE. COPYRIGHT NEARMAP 2023. IMAGERY CAPTURED THROUGH THE FOLLOWING DATES: 3/26/2023, 3/28/2023, 4/7/2023, 6/10/2023, & 6/17/2023.
- STREAMS DATASET: NATIONAL HYDROGRAPHY DATASET (NHD), USGS.

CLIENT

MICHIGAN DEPARTMENT OF TRANSPORTATION (MDOT)

PROJECT

I-94 CONNECTED AND AUTOMATED VEHICLE CORRIDOR PROJECT

TITLE

POTENTIAL WETLANDS DETAIL MAP
4 OF 35

CONSULTANT

YYYY-MM-DD	2023-12-04
PREPARED	RHG
DESIGN	RHG
REVIEW	-
APPROVED	-

PROJECT No.
30902432.001

FIGURE

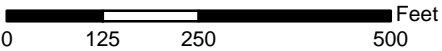
4



LEGEND

- APPROXIMATE SITE LIMITS
- STREAM/RIVER
- WETLANDS DELINEATED BY DLZ
- MDOT
- POTENTIAL WETLAND AREA
- 35 FOOT IMPACT BUFFER
- CULVERT

KEY MAP




REFERENCE

- AERIAL IMAGERY: NEARMAP IMAGERY SERVICE. COPYRIGHT NEARMAP 2023. IMAGERY CAPTURED THROUGH THE FOLLOWING DATES: 3/26/2023, 3/28/2023, 4/7/2023, 6/10/2023, & 6/17/2023.
- STREAMS DATASET: NATIONAL HYDROGRAPHY DATASET (NHD), USGS.

CLIENT
MICHIGAN DEPARTMENT OF TRANSPORTATION (MDOT)

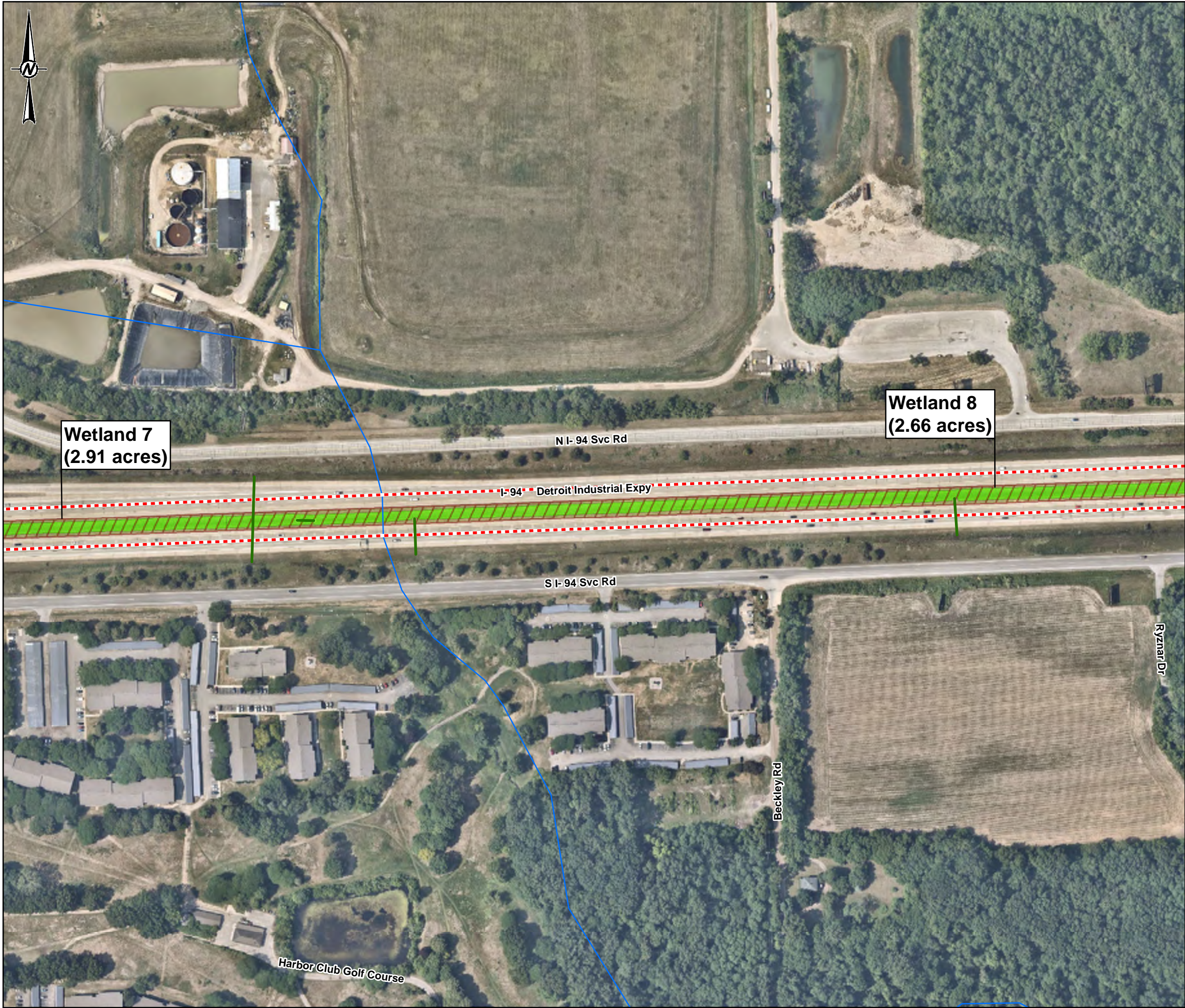
PROJECT
I-94 CONNECTED AND AUTOMATED VEHICLE CORRIDOR PROJECT

TITLE
POTENTIAL WETLANDS DETAIL MAP
5 OF 35

	CONSULTANT	YYYY-MM-DD	2023-12-04
	PREPARED		RHG
	DESIGN		RHG
	REVIEW		-
	APPROVED		-

PROJECT No.
30902432.001

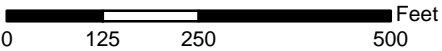
FIGURE
5



LEGEND

- APPROXIMATE SITE LIMITS
- STREAM/RIVER
- WETLANDS DELINEATED BY DLZ
- MDOT
- POTENTIAL WETLAND AREA
- 35 FOOT IMPACT BUFFER
- CULVERT

KEY MAP



REFERENCE

- AERIAL IMAGERY: NEARMAP IMAGERY SERVICE. COPYRIGHT NEARMAP 2023. IMAGERY CAPTURED THROUGH THE FOLLOWING DATES: 3/26/2023, 3/28/2023, 4/7/2023, 6/10/2023, & 6/17/2023.
- STREAMS DATASET: NATIONAL HYDROGRAPHY DATASET (NHD), USGS.

CLIENT

MICHIGAN DEPARTMENT OF TRANSPORTATION (MDOT)

PROJECT

I-94 CONNECTED AND AUTOMATED VEHICLE CORRIDOR PROJECT

TITLE

POTENTIAL WETLANDS DETAIL MAP
6 OF 35

CONSULTANT



YYYY-MM-DD	2023-12-04
PREPARED	RHG
DESIGN	RHG
REVIEW	-
APPROVED	-

PROJECT No.
30902432.001

FIGURE

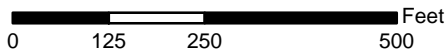
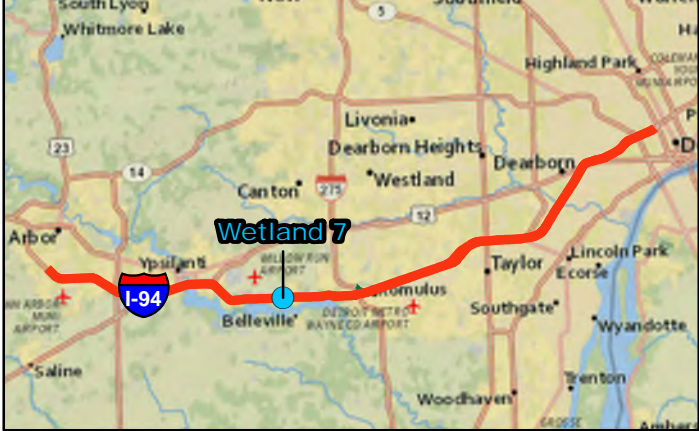
6



LEGEND

- APPROXIMATE SITE LIMITS
- STREAM/RIVER
- WETLANDS DELINEATED BY DLZ
- MDOT
- POTENTIAL WETLAND AREA
- 35 FOOT IMPACT BUFFER
- CULVERT

KEY MAP



REFERENCE

- AERIAL IMAGERY: NEARMAP IMAGERY SERVICE. COPYRIGHT NEARMAP 2023. IMAGERY CAPTURED THROUGH THE FOLLOWING DATES: 3/26/2023, 3/28/2023, 4/7/2023, 6/10/2023, & 6/17/2023.
- STREAMS DATASET: NATIONAL HYDROGRAPHY DATASET (NHD), USGS.

CLIENT

MICHIGAN DEPARTMENT OF TRANSPORTATION (MDOT)

PROJECT

I-94 CONNECTED AND AUTOMATED VEHICLE CORRIDOR PROJECT

TITLE

POTENTIAL WETLANDS DETAIL MAP
7 OF 35

CONSULTANT

YYYY-MM-DD	2023-12-04
PREPARED	RHG
DESIGN	RHG
REVIEW	-
APPROVED	-

PROJECT No.
30902432.001

FIGURE
7



LEGEND

- APPROXIMATE SITE LIMITS
- STREAM/RIVER
- WETLANDS DELINEATED BY DLZ
- MDOT
- POTENTIAL WETLAND AREA
- 35 FOOT IMPACT BUFFER
- CULVERT

KEY MAP



REFERENCE

- AERIAL IMAGERY: NEARMAP IMAGERY SERVICE. COPYRIGHT NEARMAP 2023. IMAGERY CAPTURED THROUGH THE FOLLOWING DATES: 3/26/2023, 3/28/2023, 4/7/2023, 6/10/2023, & 6/17/2023.
- STREAMS DATASET: NATIONAL HYDROGRAPHY DATASET (NHD), USGS.

CLIENT

MICHIGAN DEPARTMENT OF TRANSPORTATION (MDOT)

PROJECT

I-94 CONNECTED AND AUTOMATED VEHICLE CORRIDOR PROJECT

TITLE

POTENTIAL WETLANDS DETAIL MAP
8 OF 35

CONSULTANT

YYYY-MM-DD	2023-12-04
PREPARED	RHG
DESIGN	RHG
REVIEW	-
APPROVED	-

PROJECT No.
30902432.001

FIGURE

8



LEGEND

APPROXIMATE SITE LIMITS

STREAM/RIVER

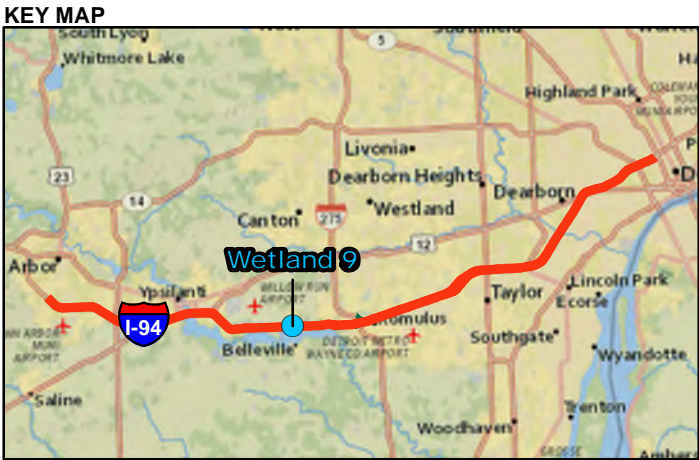
WETLANDS DELINEATED BY DLZ

MDOT

POTENTIAL WETLAND AREA

35 FOOT IMPACT BUFFER

CULVERT



REFERENCE

1. AERIAL IMAGERY: NEARMAP IMAGERY SERVICE. COPYRIGHT NEARMAP 2023. IMAGERY CAPTURED THROUGH THE FOLLOWING DATES: 3/26/2023, 3/28/2023, 4/7/2023, 6/10/2023, & 6/17/2023.

2. STREAMS DATASET: NATIONAL HYDROGRAPHY DATASET (NHD), USGS.

CLIENT

MICHIGAN DEPARTMENT OF TRANSPORTATION (MDOT)

PROJECT

I-94 CONNECTED AND AUTOMATED VEHICLE CORRIDOR PROJECT

TITLE

POTENTIAL WETLANDS DETAIL MAP
9 OF 35

CONSULTANT	YYYY-MM-DD	2023-12-04
	PREPARED	RHG
	DESIGN	RHG
	REVIEW	-
	APPROVED	-



LEGEND

- APPROXIMATE SITE LIMITS
- STREAM/RIVER
- WETLANDS DELINEATED BY DLZ
- MDOT
- POTENTIAL WETLAND AREA
- 35 FOOT IMPACT BUFFER
- CULVERT

KEY MAP

REFERENCE

1. AERIAL IMAGERY: NEARMAP IMAGERY SERVICE. COPYRIGHT NEARMAP 2023. IMAGERY CAPTURED THROUGH THE FOLLOWING DATES: 3/26/2023, 3/28/2023, 4/7/2023, 6/10/2023, & 6/17/2023.

2. STREAMS DATASET: NATIONAL HYDROGRAPHY DATASET (NHD), USGS.

CLIENT

MICHIGAN DEPARTMENT OF TRANSPORTATION (MDOT)

PROJECT

I-94 CONNECTED AND AUTOMATED VEHICLE CORRIDOR PROJECT

TITLE

POTENTIAL WETLANDS DETAIL MAP
10 OF 35

CONSULTANT	YYYY-MM-DD	2023-12-04
	PREPARED	RHG
	DESIGN	RHG
	REVIEW	-
	APPROVED	-

PROJECT No.

30902432.001

FIGURE

10

Path: M:\04_MDOT_CIVAC\11417_30902432.001_Fig05_DESKTOP_WETLANDS.mxd

IF THIS MEASUREMENT DOES NOT MATCH WHAT IS SHOWN, THE SHEET SIZE HAS BEEN MODIFIED FROM: 11x17



LEGEND

- APPROXIMATE SITE LIMITS
- STREAM/RIVER
- WETLANDS DELINEATED BY DLZ
- MDOT
- POTENTIAL WETLAND AREA
- 35 FOOT IMPACT BUFFER
- CULVERT

KEY MAP



REFERENCE

- AERIAL IMAGERY: NEARMAP IMAGERY SERVICE. COPYRIGHT NEARMAP 2023. IMAGERY CAPTURED THROUGH THE FOLLOWING DATES: 3/26/2023, 3/28/2023, 4/7/2023, 6/10/2023, & 6/17/2023.
- STREAMS DATASET: NATIONAL HYDROGRAPHY DATASET (NHD), USGS.

CLIENT

MICHIGAN DEPARTMENT OF TRANSPORTATION (MDOT)

PROJECT

I-94 CONNECTED AND AUTOMATED VEHICLE CORRIDOR PROJECT

TITLE

POTENTIAL WETLANDS DETAIL MAP
11 OF 35

CONSULTANT



YYYY-MM-DD	2023-12-04
PREPARED	RHG
DESIGN	RHG
REVIEW	-
APPROVED	-

PROJECT No.
30902432.001

FIGURE
11



LEGEND

APPROXIMATE SITE LIMITS

STREAM/RIVER

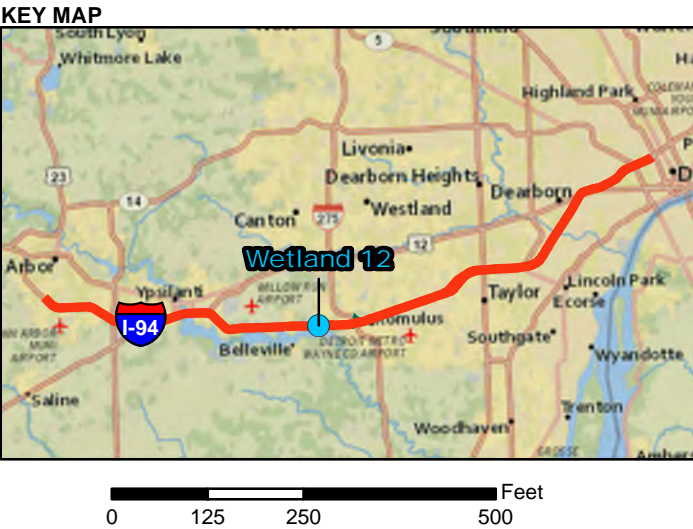
WETLANDS DELINEATED BY DLZ

MDOT

POTENTIAL WETLAND AREA

35 FOOT IMPACT BUFFER

CULVERT



REFERENCE

1. AERIAL IMAGERY: NEARMAP IMAGERY SERVICE. COPYRIGHT NEARMAP 2023. IMAGERY CAPTURED THROUGH THE FOLLOWING DATES: 3/26/2023, 3/28/2023, 4/7/2023, 6/10/2023, & 6/17/2023.

2. STREAMS DATASET: NATIONAL HYDROGRAPHY DATASET (NHD), USGS.

CLIENT

MICHIGAN DEPARTMENT OF TRANSPORTATION (MDOT)

PROJECT

I-94 CONNECTED AND AUTOMATED VEHICLE CORRIDOR PROJECT

TITLE

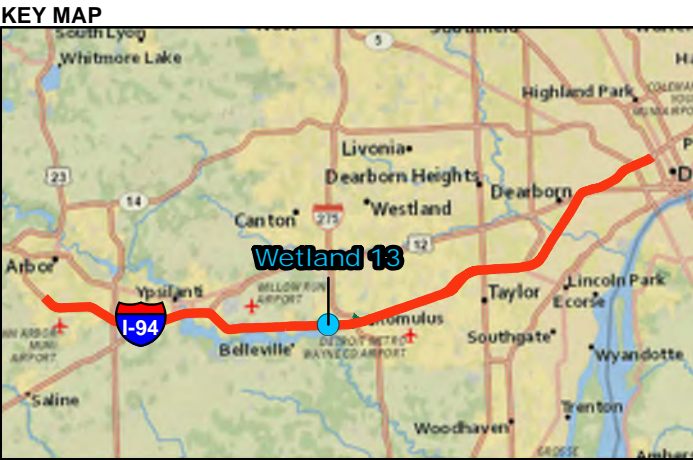
POTENTIAL WETLANDS DETAIL MAP
12 OF 35

<div>CONSULTANT</div> <div><div>wsp</div></div>	YYYY-MM-DD	2023-12-04
	PREPARED	RHG
	DESIGN	RHG
	REVIEW	-
	APPROVED	-



LEGEND

- APPROXIMATE SITE LIMITS
- STREAM/RIVER
- WETLANDS DELINEATED BY DLZ
- MDOT
- POTENTIAL WETLAND AREA
- 35 FOOT IMPACT BUFFER
- CULVERT



REFERENCE

1. AERIAL IMAGERY: NEARMAP IMAGERY SERVICE. COPYRIGHT NEARMAP 2023. IMAGERY CAPTURED THROUGH THE FOLLOWING DATES: 3/26/2023, 3/28/2023, 4/7/2023, 6/10/2023, & 6/17/2023.

2. STREAMS DATASET: NATIONAL HYDROGRAPHY DATASET (NHD), USGS.

CLIENT
MICHIGAN DEPARTMENT OF TRANSPORTATION (MDOT)

PROJECT
I-94 CONNECTED AND AUTOMATED VEHICLE CORRIDOR PROJECT

TITLE
POTENTIAL WETLANDS DETAIL MAP
13 OF 35

CONSULTANT	YYYY-MM-DD	2023-12-04
PREPARED	RHG	
DESIGN	RHG	
REVIEW	-	
APPROVED	-	

PROJECT No.
30902432.001

FIGURE
13



LEGEND

- APPROXIMATE SITE LIMITS
- STREAM/RIVER
- WETLANDS DELINEATED BY DLZ
- MDOT
- POTENTIAL WETLAND AREA
- 35 FOOT IMPACT BUFFER
- CULVERT

KEY MAP



REFERENCE

- AERIAL IMAGERY: NEARMAP IMAGERY SERVICE. COPYRIGHT NEARMAP 2023. IMAGERY CAPTURED THROUGH THE FOLLOWING DATES: 3/26/2023, 3/28/2023, 4/7/2023, 6/10/2023, & 6/17/2023.
- STREAMS DATASET: NATIONAL HYDROGRAPHY DATASET (NHD), USGS.

CLIENT

MICHIGAN DEPARTMENT OF TRANSPORTATION (MDOT)

PROJECT

I-94 CONNECTED AND AUTOMATED VEHICLE CORRIDOR PROJECT

TITLE

POTENTIAL WETLANDS DETAIL MAP
14 OF 35

CONSULTANT



YYYY-MM-DD	2023-12-04
PREPARED	RHG
DESIGN	RHG
REVIEW	-
APPROVED	-

PROJECT No.
30902432.001

FIGURE
14



LEGEND

APPROXIMATE SITE LIMITS

STREAM/RIVER

WETLANDS DELINEATED BY DLZ

MDOT

POTENTIAL WETLAND AREA

35 FOOT IMPACT BUFFER

CULVERT

KEY MAP

0 125 250 500 Feet

REFERENCE

1. AERIAL IMAGERY: NEARMAP IMAGERY SERVICE. COPYRIGHT NEARMAP 2023. IMAGERY CAPTURED THROUGH THE FOLLOWING DATES: 3/26/2023, 3/28/2023, 4/7/2023, 6/10/2023, & 6/17/2023.

2. STREAMS DATASET: NATIONAL HYDROGRAPHY DATASET (NHD), USGS.

CLIENT

MICHIGAN DEPARTMENT OF TRANSPORTATION (MDOT)

PROJECT

I-94 CONNECTED AND AUTOMATED VEHICLE CORRIDOR PROJECT

TITLE

POTENTIAL WETLANDS DETAIL MAP

15 OF 35

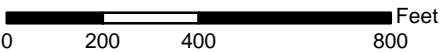
<div>CONSULTANT</div> <div></div>	YYYY-MM-DD	2023-12-04
	PREPARED	RHG
	DESIGN	RHG
	REVIEW	-
	APPROVED	-



LEGEND

- APPROXIMATE SITE LIMITS
- STREAM/RIVER
- WETLANDS DELINEATED BY DLZ
- MDOT
- POTENTIAL WETLAND AREA
- 35 FOOT IMPACT BUFFER
- CULVERT

KEY MAP



REFERENCE

- AERIAL IMAGERY: NEARMAP IMAGERY SERVICE. COPYRIGHT NEARMAP 2023. IMAGERY CAPTURED THROUGH THE FOLLOWING DATES: 3/26/2023, 3/28/2023, 4/7/2023, 6/10/2023, & 6/17/2023.
- STREAMS DATASET: NATIONAL HYDROGRAPHY DATASET (NHD), USGS.

CLIENT

MICHIGAN DEPARTMENT OF TRANSPORTATION (MDOT)

PROJECT

I-94 CONNECTED AND AUTOMATED VEHICLE CORRIDOR PROJECT

TITLE

POTENTIAL WETLANDS DETAIL MAP
16 OF 35

CONSULTANT

YYYY-MM-DD	2023-12-04
PREPARED	RHG
DESIGN	RHG
REVIEW	-
APPROVED	-



PROJECT No.
30902432.001

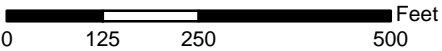
FIGURE
16



LEGEND

- APPROXIMATE SITE LIMITS
- STREAM/RIVER
- WETLANDS DELINEATED BY DLZ
- MDOT
- POTENTIAL WETLAND AREA
- 35 FOOT IMPACT BUFFER
- CULVERT

KEY MAP



REFERENCE

- AERIAL IMAGERY: NEARMAP IMAGERY SERVICE. COPYRIGHT NEARMAP 2023. IMAGERY CAPTURED THROUGH THE FOLLOWING DATES: 3/26/2023, 3/28/2023, 4/7/2023, 6/10/2023, & 6/17/2023.
- STREAMS DATASET: NATIONAL HYDROGRAPHY DATASET (NHD), USGS.

CLIENT

MICHIGAN DEPARTMENT OF TRANSPORTATION (MDOT)

PROJECT

I-94 CONNECTED AND AUTOMATED VEHICLE CORRIDOR PROJECT

TITLE

POTENTIAL WETLANDS DETAIL MAP
17 OF 35

CONSULTANT

YYYY-MM-DD	2023-12-04
PREPARED	RHG
DESIGN	RHG
REVIEW	-
APPROVED	-

PROJECT No.
30902432.001

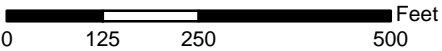
FIGURE
17



LEGEND

- APPROXIMATE SITE LIMITS
- STREAM/RIVER
- WETLANDS DELINEATED BY DLZ
- MDOT
- POTENTIAL WETLAND AREA
- 35 FOOT IMPACT BUFFER
- CULVERT

KEY MAP



REFERENCE

- AERIAL IMAGERY: NEARMAP IMAGERY SERVICE. COPYRIGHT NEARMAP 2023. IMAGERY CAPTURED THROUGH THE FOLLOWING DATES: 3/26/2023, 3/28/2023, 4/7/2023, 6/10/2023, & 6/17/2023.
- STREAMS DATASET: NATIONAL HYDROGRAPHY DATASET (NHD), USGS.

CLIENT

MICHIGAN DEPARTMENT OF TRANSPORTATION (MDOT)

PROJECT

I-94 CONNECTED AND AUTOMATED VEHICLE CORRIDOR PROJECT

TITLE

POTENTIAL WETLANDS DETAIL MAP
18 OF 35

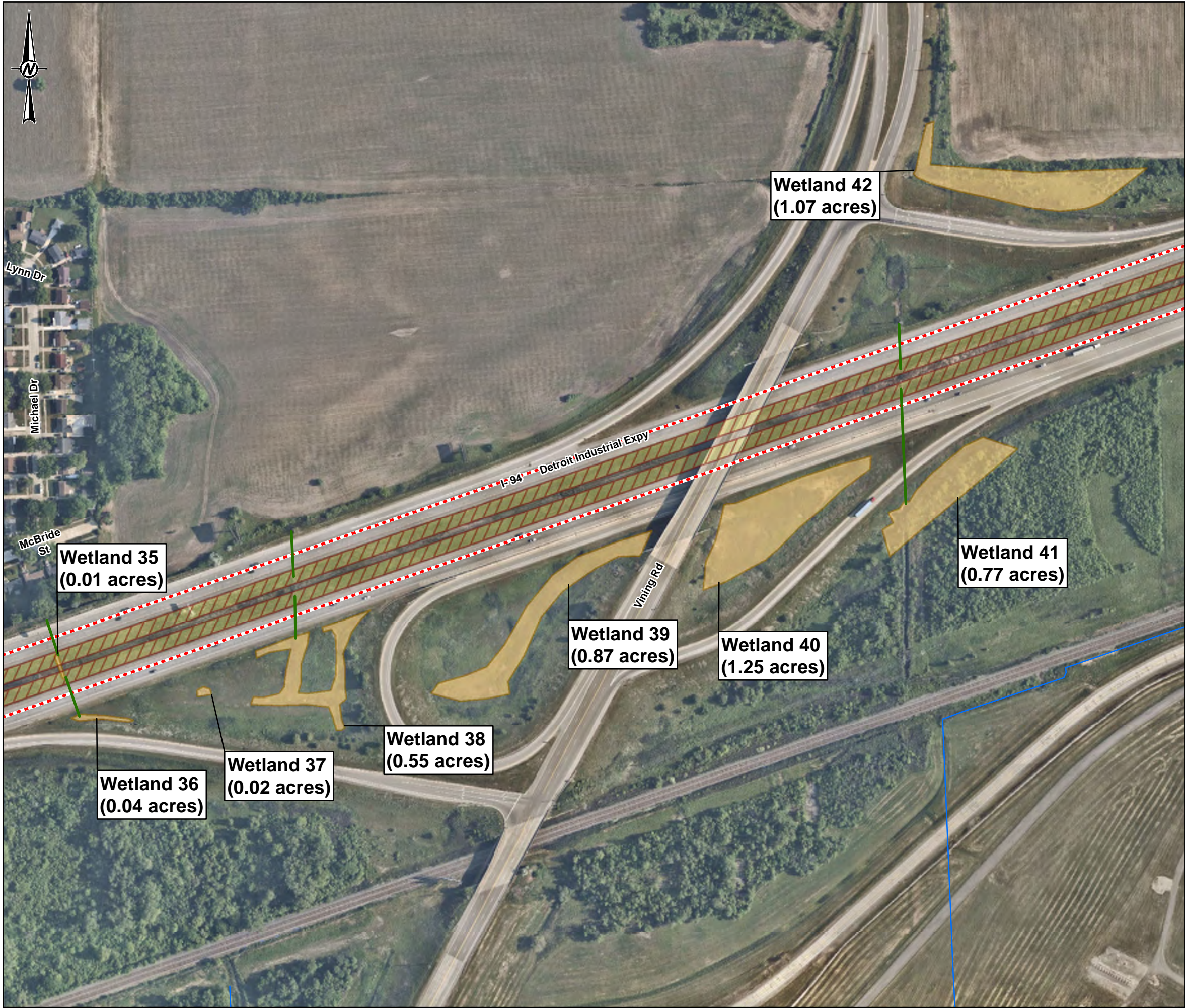
CONSULTANT



YYYY-MM-DD	2023-12-04
PREPARED	RHG
DESIGN	RHG
REVIEW	-
APPROVED	-

PROJECT No.
30902432.001

FIGURE
18



LEGEND

- APPROXIMATE SITE LIMITS
- STREAM/RIVER
- WETLANDS DELINEATED BY DLZ
- MDOT
- POTENTIAL WETLAND AREA
- 35 FOOT IMPACT BUFFER
- CULVERT

KEY MAP




REFERENCE

- AERIAL IMAGERY: NEARMAP IMAGERY SERVICE. COPYRIGHT NEARMAP 2023. IMAGERY CAPTURED THROUGH THE FOLLOWING DATES: 3/26/2023, 3/28/2023, 4/7/2023, 6/10/2023, & 6/17/2023.
- STREAMS DATASET: NATIONAL HYDROGRAPHY DATASET (NHD), USGS.

CLIENT
MICHIGAN DEPARTMENT OF TRANSPORTATION (MDOT)

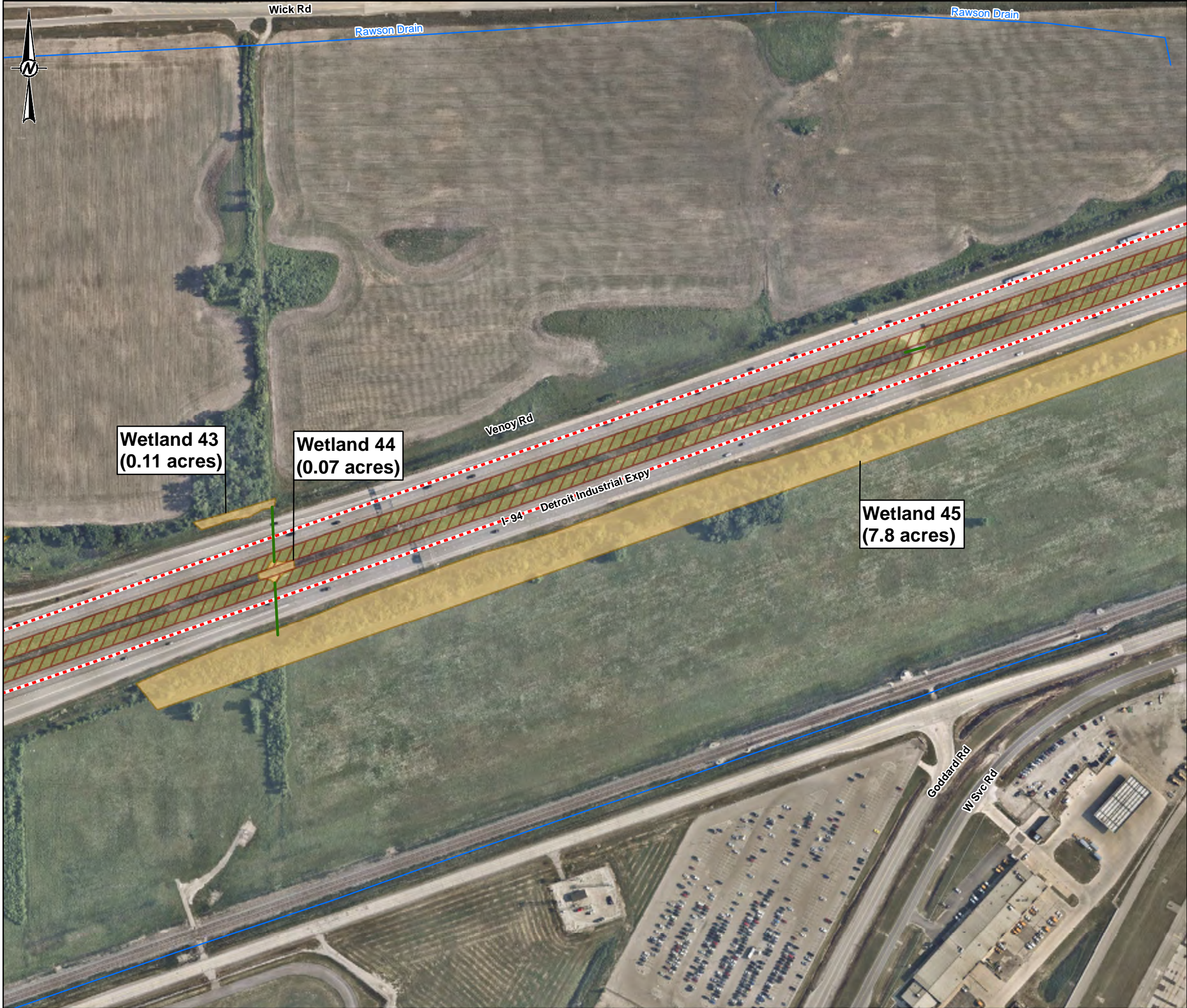
PROJECT
I-94 CONNECTED AND AUTOMATED VEHICLE CORRIDOR PROJECT

TITLE
POTENTIAL WETLANDS DETAIL MAP
19 OF 35

	CONSULTANT	YYYY-MM-DD	2023-12-04
	PREPARED	RHG	
	DESIGN	RHG	
	REVIEW	-	
	APPROVED	-	

PROJECT No.
30902432.001

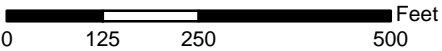
FIGURE
19



LEGEND

- APPROXIMATE SITE LIMITS
- STREAM/RIVER
- WETLANDS DELINEATED BY DLZ
- MDOT
- POTENTIAL WETLAND AREA
- 35 FOOT IMPACT BUFFER
- CULVERT

KEY MAP



REFERENCE

- AERIAL IMAGERY: NEARMAP IMAGERY SERVICE. COPYRIGHT NEARMAP 2023. IMAGERY CAPTURED THROUGH THE FOLLOWING DATES: 3/26/2023, 3/28/2023, 4/7/2023, 6/10/2023, & 6/17/2023.
- STREAMS DATASET: NATIONAL HYDROGRAPHY DATASET (NHD), USGS.

CLIENT

MICHIGAN DEPARTMENT OF TRANSPORTATION (MDOT)

PROJECT

I-94 CONNECTED AND AUTOMATED VEHICLE CORRIDOR PROJECT

TITLE

POTENTIAL WETLANDS DETAIL MAP
20 OF 35

CONSULTANT



YYYY-MM-DD	2023-12-04
PREPARED	RHG
DESIGN	RHG
REVIEW	-
APPROVED	-

PROJECT No.
30902432.001

FIGURE
20



LEGEND

- APPROXIMATE SITE LIMITS
- STREAM/RIVER
- WETLANDS DELINEATED BY DLZ
- MDOT
- POTENTIAL WETLAND AREA
- 35 FOOT IMPACT BUFFER
- CULVERT

KEY MAP



REFERENCE

- AERIAL IMAGERY: NEARMAP IMAGERY SERVICE. COPYRIGHT NEARMAP 2023. IMAGERY CAPTURED THROUGH THE FOLLOWING DATES: 3/26/2023, 3/28/2023, 4/7/2023, 6/10/2023, & 6/17/2023.
- STREAMS DATASET: NATIONAL HYDROGRAPHY DATASET (NHD), USGS.

CLIENT
MICHIGAN DEPARTMENT OF TRANSPORTATION (MDOT)

PROJECT
I-94 CONNECTED AND AUTOMATED VEHICLE CORRIDOR PROJECT

TITLE
POTENTIAL WETLANDS DETAIL MAP
21 OF 35

	CONSULTANT	YYYY-MM-DD	2023-12-04
	PREPARED	RHG	
	DESIGN	RHG	
	REVIEW	-	
	APPROVED	-	

PROJECT No.
30902432.001

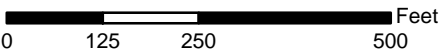
FIGURE
21



LEGEND

- APPROXIMATE SITE LIMITS
- STREAM/RIVER
- WETLANDS DELINEATED BY DLZ
- MDOT
- POTENTIAL WETLAND AREA
- 35 FOOT IMPACT BUFFER
- CULVERT

KEY MAP



REFERENCE

- AERIAL IMAGERY: NEARMAP IMAGERY SERVICE. COPYRIGHT NEARMAP 2023. IMAGERY CAPTURED THROUGH THE FOLLOWING DATES: 3/26/2023, 3/28/2023, 4/7/2023, 6/10/2023, & 6/17/2023.
- STREAMS DATASET: NATIONAL HYDROGRAPHY DATASET (NHD), USGS.

CLIENT

MICHIGAN DEPARTMENT OF TRANSPORTATION (MDOT)

PROJECT

I-94 CONNECTED AND AUTOMATED VEHICLE CORRIDOR PROJECT

TITLE

POTENTIAL WETLANDS DETAIL MAP
22 OF 35

CONSULTANT

YYYY-MM-DD	2023-12-04
PREPARED	RHG
DESIGN	RHG
REVIEW	-
APPROVED	-

PROJECT No.
30902432.001

FIGURE
22



LEGEND

APPROXIMATE SITE LIMITS

STREAM/RIVER

WETLANDS DELINEATED BY DLZ

MDOT

POTENTIAL WETLAND AREA

35 FOOT IMPACT BUFFER

CULVERT



REFERENCE

1. AERIAL IMAGERY: NEARMAP IMAGERY SERVICE. COPYRIGHT NEARMAP 2023. IMAGERY CAPTURED THROUGH THE FOLLOWING DATES: 3/26/2023, 3/28/2023, 4/7/2023, 6/10/2023, & 6/17/2023.

2. STREAMS DATASET: NATIONAL HYDROGRAPHY DATASET (NHD), USGS.

CLIENT

MICHIGAN DEPARTMENT OF TRANSPORTATION (MDOT)

PROJECT

I-94 CONNECTED AND AUTOMATED VEHICLE CORRIDOR PROJECT

TITLE

POTENTIAL WETLANDS DETAIL MAP
23 OF 35

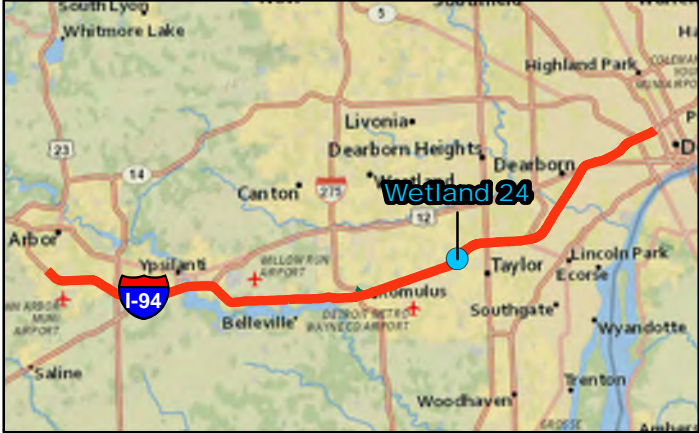
<div>CONSULTANT</div> <div><div>wsp</div></div>	YYYY-MM-DD	2023-12-04
	PREPARED	RHG
	DESIGN	RHG
	REVIEW	-
	APPROVED	-



LEGEND

- APPROXIMATE SITE LIMITS
- STREAM/RIVER
- WETLANDS DELINEATED BY DLZ
- MDOT
- POTENTIAL WETLAND AREA
- 35 FOOT IMPACT BUFFER
- CULVERT

KEY MAP



REFERENCE

- AERIAL IMAGERY: NEARMAP IMAGERY SERVICE. COPYRIGHT NEARMAP 2023. IMAGERY CAPTURED THROUGH THE FOLLOWING DATES: 3/26/2023, 3/28/2023, 4/7/2023, 6/10/2023, & 6/17/2023.
- STREAMS DATASET: NATIONAL HYDROGRAPHY DATASET (NHD), USGS.

CLIENT

MICHIGAN DEPARTMENT OF TRANSPORTATION (MDOT)

PROJECT

I-94 CONNECTED AND AUTOMATED VEHICLE CORRIDOR PROJECT

TITLE

POTENTIAL WETLANDS DETAIL MAP
24 OF 35

CONSULTANT



YYYY-MM-DD	2023-12-04
PREPARED	RHG
DESIGN	RHG
REVIEW	-
APPROVED	-

PROJECT No.
30902432.001

FIGURE
24



LEGEND

- APPROXIMATE SITE LIMITS
- STREAM/RIVER
- WETLANDS DELINEATED BY DLZ
- MDOT
- POTENTIAL WETLAND AREA
- 35 FOOT IMPACT BUFFER
- CULVERT



REFERENCE


1. AERIAL IMAGERY: NEARMAP IMAGERY SERVICE. COPYRIGHT NEARMAP 2023. IMAGERY CAPTURED THROUGH THE FOLLOWING DATES: 3/26/2023, 3/28/2023, 4/7/2023, 6/10/2023, & 6/17/2023.

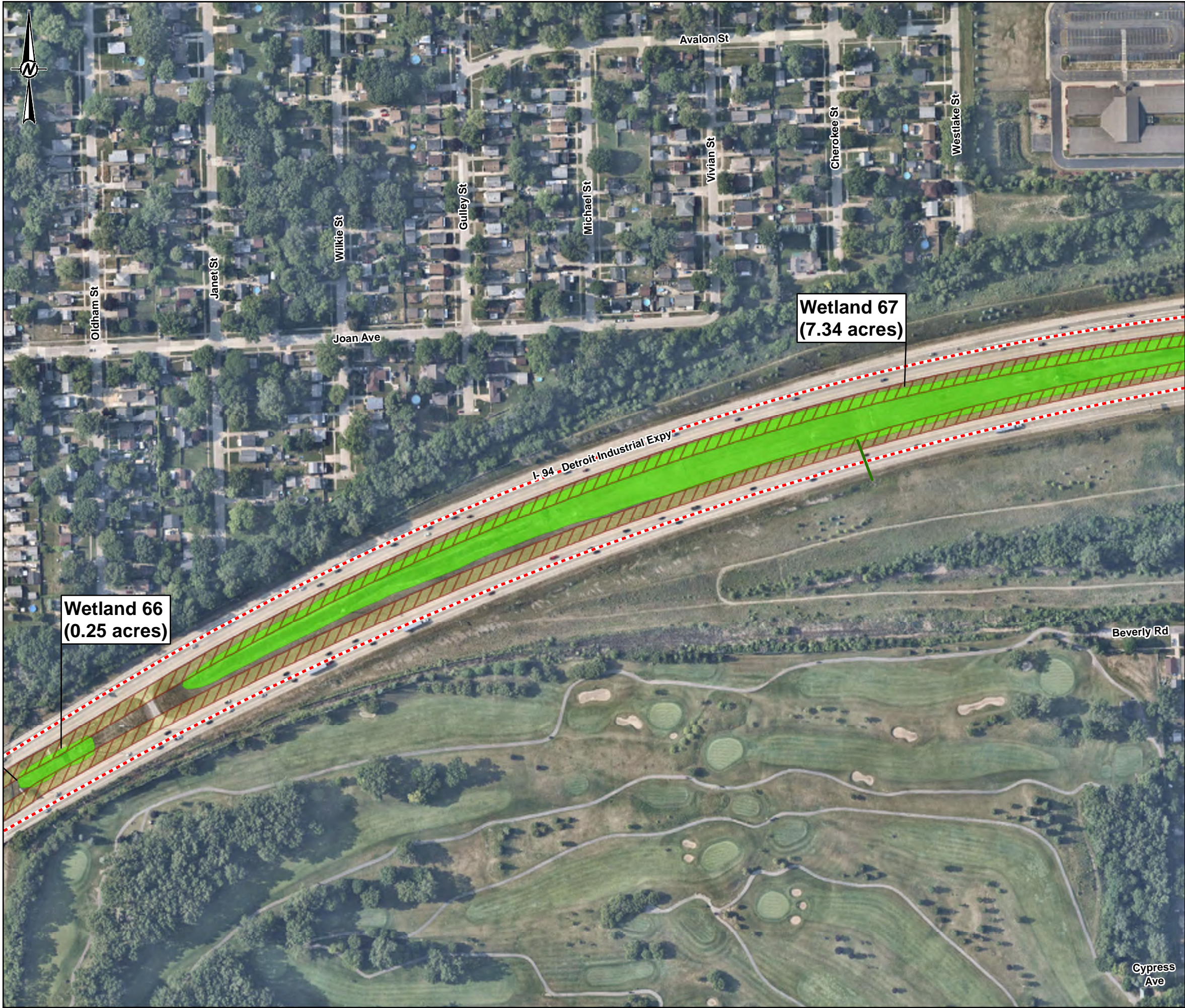
2. STREAMS DATASET: NATIONAL HYDROGRAPHY DATASET (NHD), USGS.

CLIENT
MICHIGAN DEPARTMENT OF TRANSPORTATION (MDOT)

PROJECT
I-94 CONNECTED AND AUTOMATED VEHICLE CORRIDOR PROJECT

TITLE
POTENTIAL WETLANDS DETAIL MAP
25 OF 35

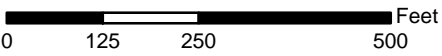
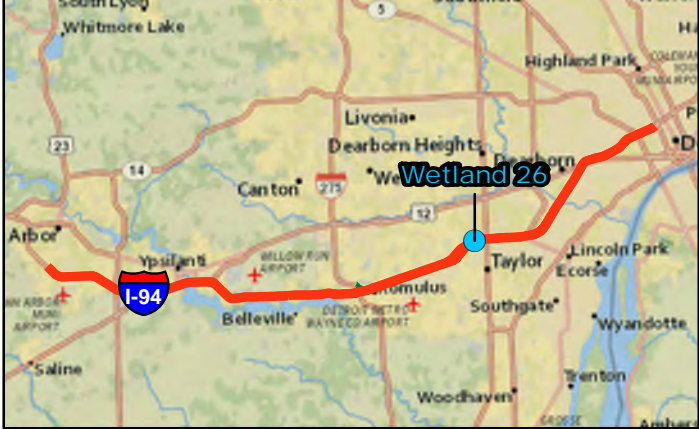
	CONSULTANT	YYYY-MM-DD	2023-12-04
	PREPARED	RHG	
	DESIGN	RHG	
	REVIEW	-	
	APPROVED	-	



LEGEND

- APPROXIMATE SITE LIMITS
- STREAM/RIVER
- WETLANDS DELINEATED BY DLZ
- MDOT
- POTENTIAL WETLAND AREA
- 35 FOOT IMPACT BUFFER
- CULVERT

KEY MAP



REFERENCE

- AERIAL IMAGERY: NEARMAP IMAGERY SERVICE. COPYRIGHT NEARMAP 2023. IMAGERY CAPTURED THROUGH THE FOLLOWING DATES: 3/26/2023, 3/28/2023, 4/7/2023, 6/10/2023, & 6/17/2023.
- STREAMS DATASET: NATIONAL HYDROGRAPHY DATASET (NHD), USGS.

CLIENT
MICHIGAN DEPARTMENT OF TRANSPORTATION (MDOT)

PROJECT
I-94 CONNECTED AND AUTOMATED VEHICLE CORRIDOR PROJECT

TITLE
POTENTIAL WETLANDS DETAIL MAP
26 OF 35

CONSULTANT	YYYY-MM-DD	2023-12-04
PREPARED	RHG	
DESIGN	RHG	
REVIEW	-	
APPROVED	-	

PROJECT No.
30902432.001

FIGURE
26



LEGEND

- APPROXIMATE SITE LIMITS
- STREAM/RIVER
- WETLANDS DELINEATED BY DLZ
- MDOT
- POTENTIAL WETLAND AREA
- 35 FOOT IMPACT BUFFER
- CULVERT



REFERENCE

1. AERIAL IMAGERY: NEARMAP IMAGERY SERVICE. COPYRIGHT NEARMAP 2023. IMAGERY CAPTURED THROUGH THE FOLLOWING DATES: 3/26/2023, 3/28/2023, 4/7/2023, 6/10/2023, & 6/17/2023.

2. STREAMS DATASET: NATIONAL HYDROGRAPHY DATASET (NHD), USGS.

CLIENT

MICHIGAN DEPARTMENT OF TRANSPORTATION (MDOT)

PROJECT

I-94 CONNECTED AND AUTOMATED VEHICLE CORRIDOR PROJECT

TITLE

POTENTIAL WETLANDS DETAIL MAP
27 OF 35

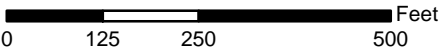
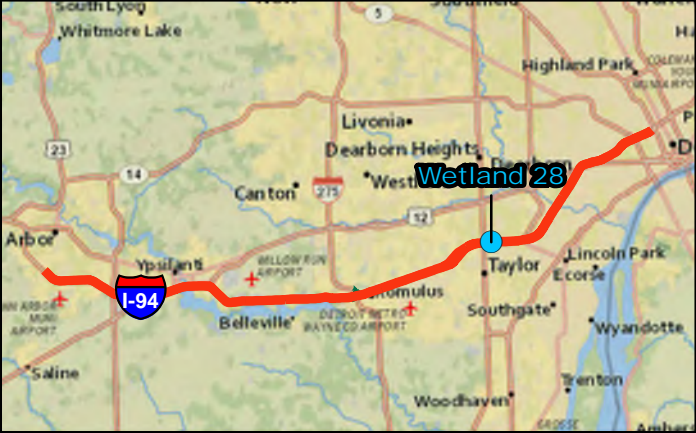
	CONSULTANT	YYYY-MM-DD	2023-12-04
	PREPARED		RHG
	DESIGN		RHG
	REVIEW		-
	APPROVED		-



LEGEND

- APPROXIMATE SITE LIMITS
- STREAM/RIVER
- WETLANDS DELINEATED BY DLZ
- MDOT
- POTENTIAL WETLAND AREA
- 35 FOOT IMPACT BUFFER
- CULVERT

KEY MAP



REFERENCE

- AERIAL IMAGERY: NEARMAP IMAGERY SERVICE. COPYRIGHT NEARMAP 2023. IMAGERY CAPTURED THROUGH THE FOLLOWING DATES: 3/26/2023, 3/28/2023, 4/7/2023, 6/10/2023, & 6/17/2023.
- STREAMS DATASET: NATIONAL HYDROGRAPHY DATASET (NHD), USGS.

CLIENT
MICHIGAN DEPARTMENT OF TRANSPORTATION (MDOT)

PROJECT
I-94 CONNECTED AND AUTOMATED VEHICLE CORRIDOR PROJECT

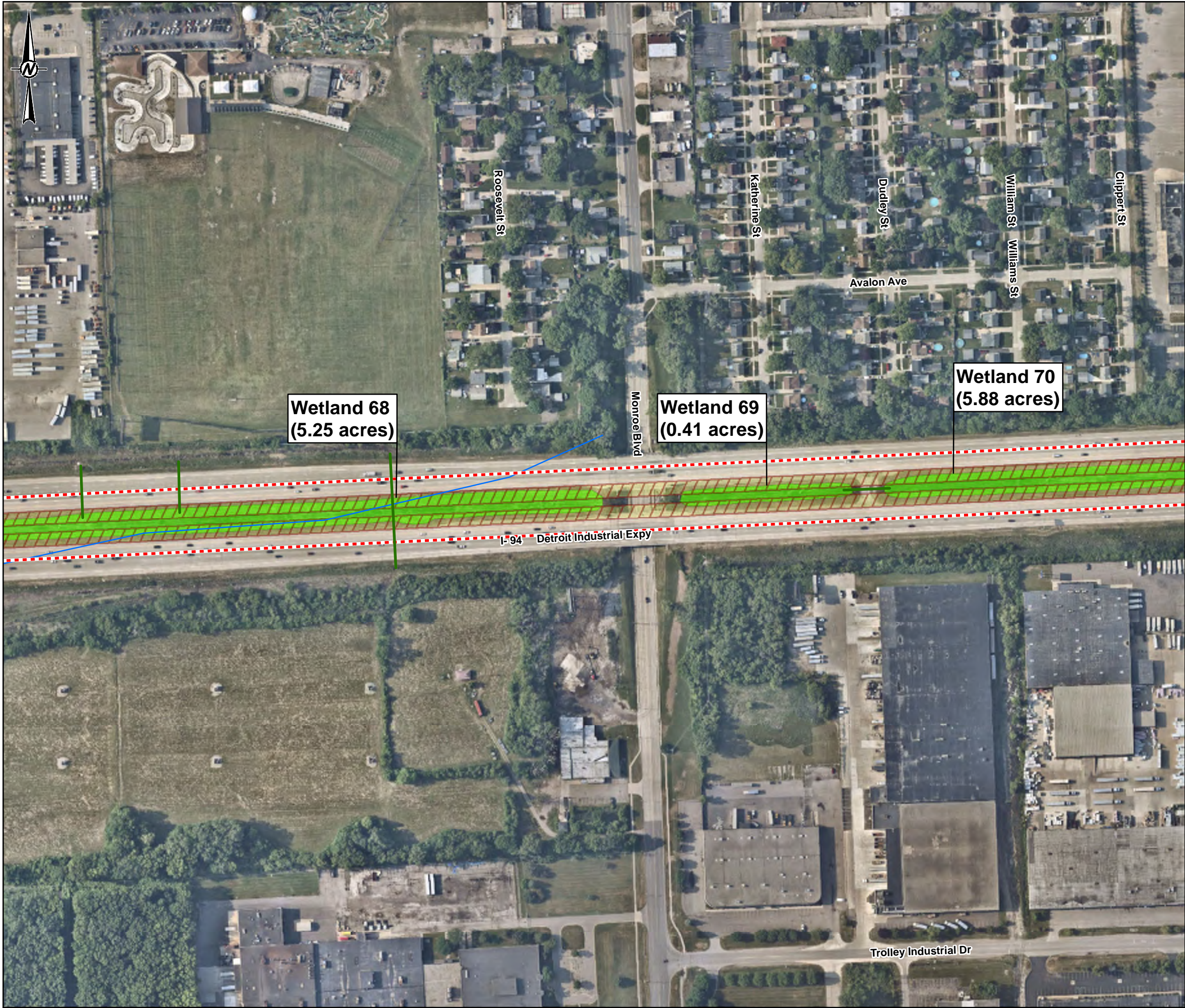
TITLE
POTENTIAL WETLANDS DETAIL MAP
28 OF 35

CONSULTANT	YYYY-MM-DD	2023-12-04
	PREPARED	RHG
	DESIGN	RHG
	REVIEW	-
	APPROVED	-



PROJECT No.
30902432.001

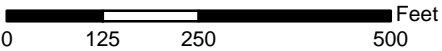
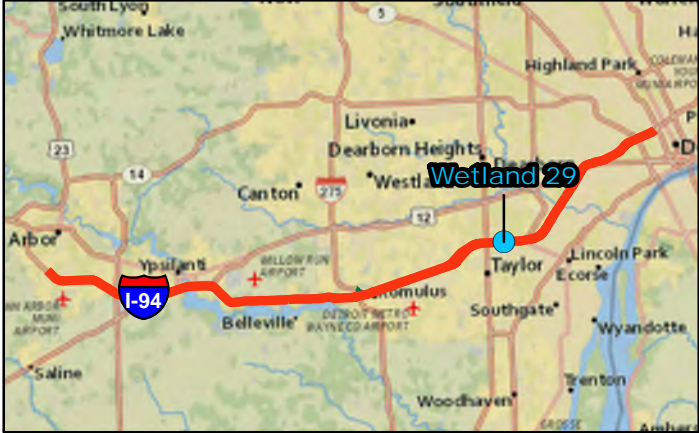
FIGURE
28



LEGEND

- APPROXIMATE SITE LIMITS
- STREAM/RIVER
- WETLANDS DELINEATED BY DLZ
- MDOT
- POTENTIAL WETLAND AREA
- 35 FOOT IMPACT BUFFER
- CULVERT

KEY MAP



REFERENCE

- AERIAL IMAGERY: NEARMAP IMAGERY SERVICE. COPYRIGHT NEARMAP 2023. IMAGERY CAPTURED THROUGH THE FOLLOWING DATES: 3/26/2023, 3/28/2023, 4/7/2023, 6/10/2023, & 6/17/2023.
- STREAMS DATASET: NATIONAL HYDROGRAPHY DATASET (NHD), USGS.

CLIENT
MICHIGAN DEPARTMENT OF TRANSPORTATION (MDOT)

PROJECT
I-94 CONNECTED AND AUTOMATED VEHICLE CORRIDOR PROJECT

TITLE
POTENTIAL WETLANDS DETAIL MAP
29 OF 35

	CONSULTANT	YYYY-MM-DD	2023-12-04
	PREPARED		RHG
	DESIGN		RHG
	REVIEW		-
	APPROVED		-

PROJECT No.
30902432.001

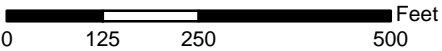
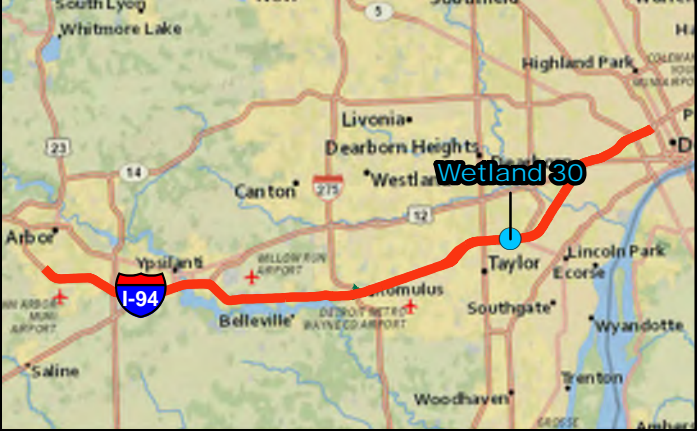
FIGURE
29



LEGEND

- APPROXIMATE SITE LIMITS
- STREAM/RIVER
- WETLANDS DELINEATED BY DLZ
- MDOT
- POTENTIAL WETLAND AREA
- 35 FOOT IMPACT BUFFER
- CULVERT

KEY MAP



REFERENCE

- AERIAL IMAGERY: NEARMAP IMAGERY SERVICE. COPYRIGHT NEARMAP 2023. IMAGERY CAPTURED THROUGH THE FOLLOWING DATES: 3/26/2023, 3/28/2023, 4/7/2023, 6/10/2023, & 6/17/2023.
- STREAMS DATASET: NATIONAL HYDROGRAPHY DATASET (NHD), USGS.

CLIENT

MICHIGAN DEPARTMENT OF TRANSPORTATION (MDOT)

PROJECT

I-94 CONNECTED AND AUTOMATED VEHICLE CORRIDOR PROJECT

TITLE

POTENTIAL WETLANDS DETAIL MAP
30 OF 35

CONSULTANT



YYYY-MM-DD	2023-12-04
PREPARED	RHG
DESIGN	RHG
REVIEW	-
APPROVED	-

PROJECT No.
30902432.001

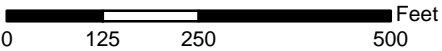
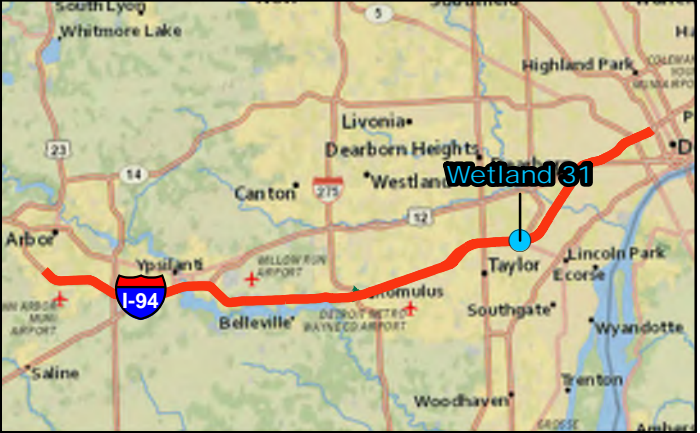
FIGURE
30



LEGEND

- APPROXIMATE SITE LIMITS
- STREAM/RIVER
- WETLANDS DELINEATED BY DLZ
- MDOT
- POTENTIAL WETLAND AREA
- 35 FOOT IMPACT BUFFER
- CULVERT

KEY MAP



REFERENCE

- AERIAL IMAGERY: NEARMAP IMAGERY SERVICE. COPYRIGHT NEARMAP 2023. IMAGERY CAPTURED THROUGH THE FOLLOWING DATES: 3/26/2023, 3/28/2023, 4/7/2023, 6/10/2023, & 6/17/2023.
- STREAMS DATASET: NATIONAL HYDROGRAPHY DATASET (NHD), USGS.

CLIENT

MICHIGAN DEPARTMENT OF TRANSPORTATION (MDOT)

PROJECT

I-94 CONNECTED AND AUTOMATED VEHICLE CORRIDOR PROJECT

TITLE

POTENTIAL WETLANDS DETAIL MAP
31 OF 35

CONSULTANT



YYYY-MM-DD	2023-12-04
PREPARED	RHG
DESIGN	RHG
REVIEW	-
APPROVED	-

PROJECT No.
30902432.001

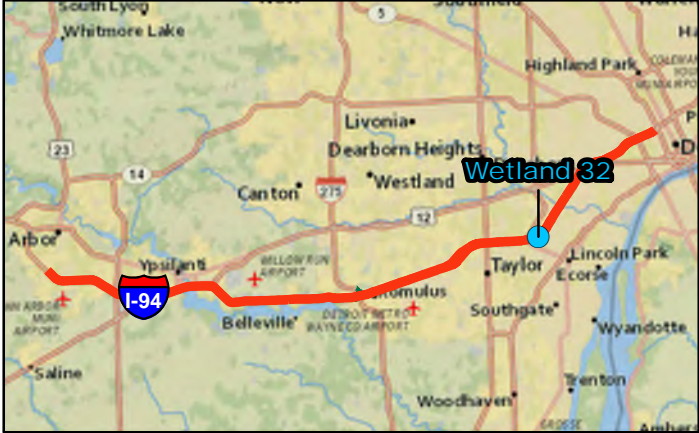
FIGURE
31



LEGEND

- APPROXIMATE SITE LIMITS
- STREAM/RIVER
- WETLANDS DELINEATED BY DLZ
- MDOT
- POTENTIAL WETLAND AREA
- 35 FOOT IMPACT BUFFER
- CULVERT

KEY MAP



REFERENCE

- AERIAL IMAGERY: NEARMAP IMAGERY SERVICE. COPYRIGHT NEARMAP 2023. IMAGERY CAPTURED THROUGH THE FOLLOWING DATES: 3/26/2023, 3/28/2023, 4/7/2023, 6/10/2023, & 6/17/2023.
- STREAMS DATASET: NATIONAL HYDROGRAPHY DATASET (NHD), USGS.

CLIENT

MICHIGAN DEPARTMENT OF TRANSPORTATION (MDOT)

PROJECT

I-94 CONNECTED AND AUTOMATED VEHICLE CORRIDOR PROJECT

TITLE

POTENTIAL WETLANDS DETAIL MAP
32 OF 35

CONSULTANT

YYYY-MM-DD	2023-12-04
PREPARED	RHG
DESIGN	RHG
REVIEW	-
APPROVED	-

PROJECT No.
30902432.001

FIGURE
32



LEGEND

APPROXIMATE SITE LIMITS

STREAM/RIVER

REFERENCE

1. AERIAL IMAGERY: NEARMAP IMAGERY SERVICE. COPYRIGHT NEARMAP 2023. IMAGERY CAPTURED THROUGH THE FOLLOWING DATES: 3/26/2023, 3/28/2023, 4/7/2023, 6/10/2023, & 6/17/2023.

2. STREAMS DATASET: NATIONAL HYDROGRAPHY DATASET (NHD), USGS.

CLIENT

MICHIGAN DEPARTMENT OF TRANSPORTATION (MDOT)

PROJECT

I-94 CONNECTED AND AUTOMATED VEHICLE CORRIDOR PROJECT

TITLE

POTENTIAL WETLANDS DETAIL MAP

33 OF 35

CONSULTANT

YYYY-MM-DD

2023-12-04

PREPARED

RHG

DESIGN

RHG

REVIEW

-

APPROVED

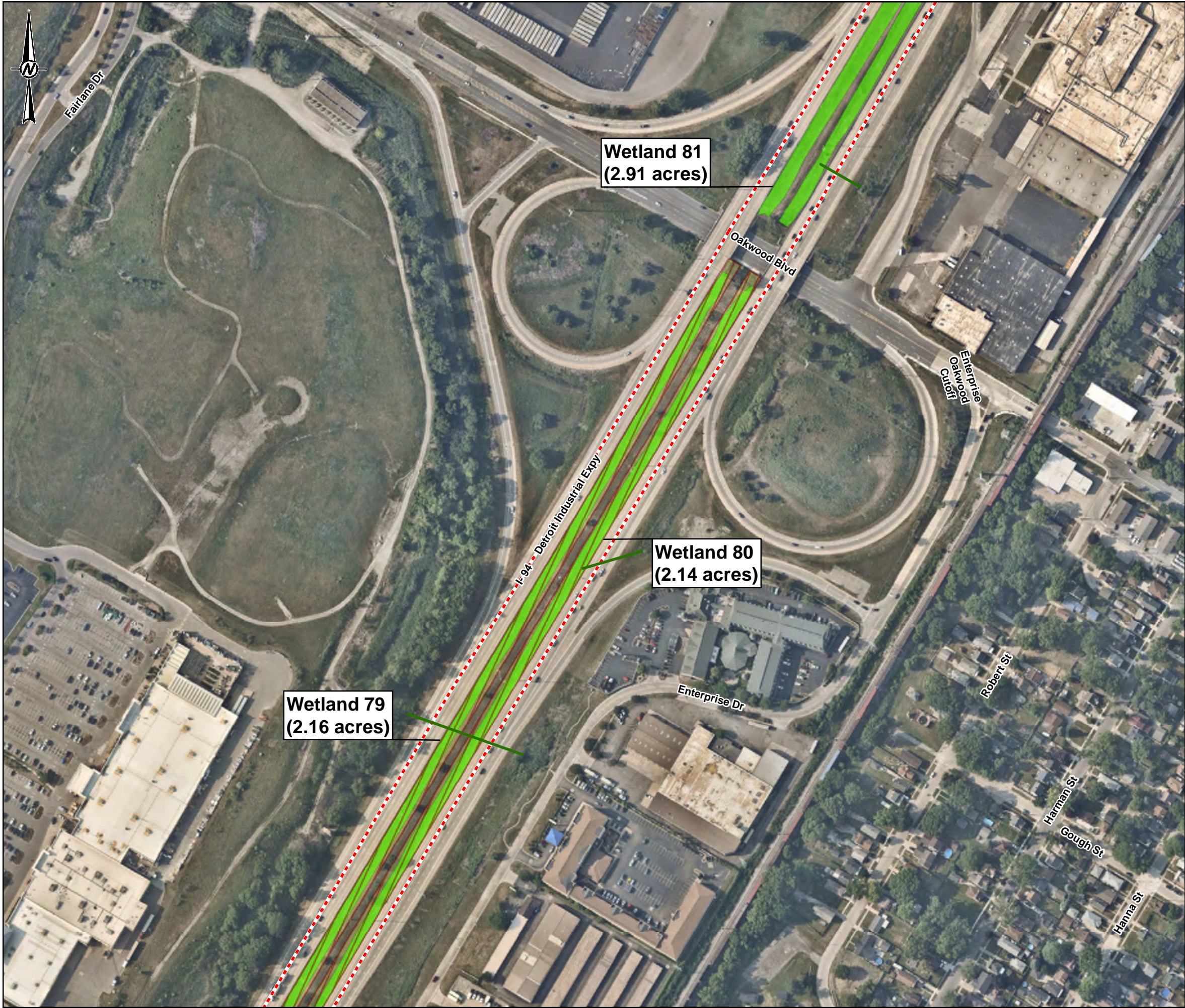
-

PROJECT No.

30902432.001

FIGURE

33



LEGEND

APPROXIMATE SITE LIMITS

STREAM/RIVER

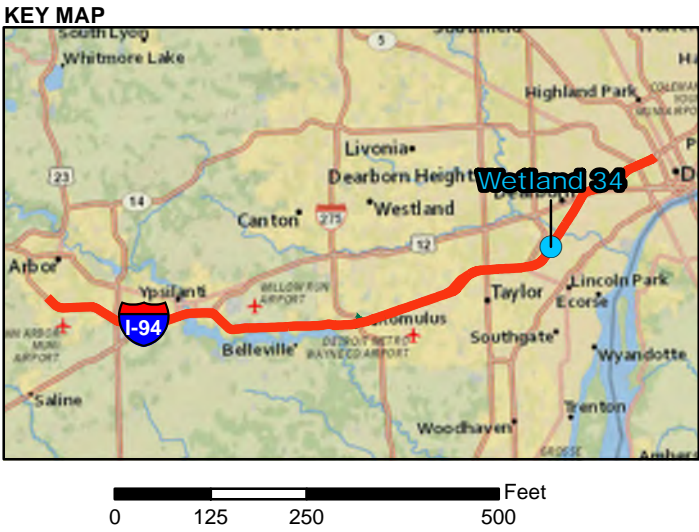
WETLANDS DELINEATED BY DLZ

MDOT

POTENTIAL WETLAND AREA

35 FOOT IMPACT BUFFER

CULVERT



REFERENCE

1. AERIAL IMAGERY: NEARMAP IMAGERY SERVICE. COPYRIGHT NEARMAP 2023. IMAGERY CAPTURED THROUGH THE FOLLOWING DATES: 3/26/2023, 3/28/2023, 4/7/2023, 6/10/2023, & 6/17/2023.

2. STREAMS DATASET: NATIONAL HYDROGRAPHY DATASET (NHD), USGS.

CLIENT

MICHIGAN DEPARTMENT OF TRANSPORTATION (MDOT)

PROJECT

I-94 CONNECTED AND AUTOMATED VEHICLE CORRIDOR PROJECT

TITLE

POTENTIAL WETLANDS DETAIL MAP
34 OF 35

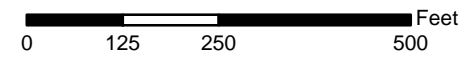
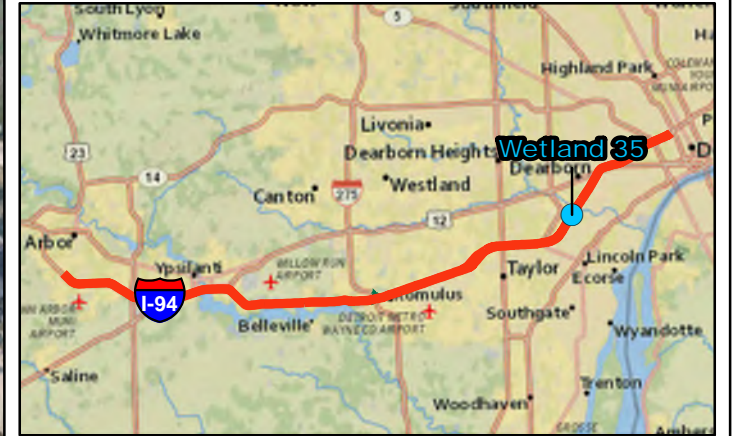
<div>CONSULTANT</div> <div></div>	YYYY-MM-DD	2023-12-04
	PREPARED	RHG
	DESIGN	RHG
	REVIEW	-
	APPROVED	-



LEGEND

- APPROXIMATE SITE LIMITS
- STREAM/RIVER
- WETLANDS DELINEATED BY DLZ
- MDOT
- POTENTIAL WETLAND AREA
- 35 FOOT IMPACT BUFFER
- CULVERT

KEY MAP



REFERENCE

- AERIAL IMAGERY: NEARMAP IMAGERY SERVICE. COPYRIGHT NEARMAP 2023. IMAGERY CAPTURED THROUGH THE FOLLOWING DATES: 3/26/2023, 3/28/2023, 4/7/2023, 6/10/2023, & 6/17/2023.
- STREAMS DATASET: NATIONAL HYDROGRAPHY DATASET (NHD), USGS.

CLIENT

MICHIGAN DEPARTMENT OF TRANSPORTATION (MDOT)

PROJECT

I-94 CONNECTED AND AUTOMATED VEHICLE CORRIDOR PROJECT

TITLE

POTENTIAL WETLANDS DETAIL MAP
35 OF 35

CONSULTANT



YYYY-MM-DD	2023-12-04
PREPARED	RHG
DESIGN	RHG
REVIEW	-
APPROVED	-

PROJECT No.
30902432.001

FIGURE
35