

Access Management

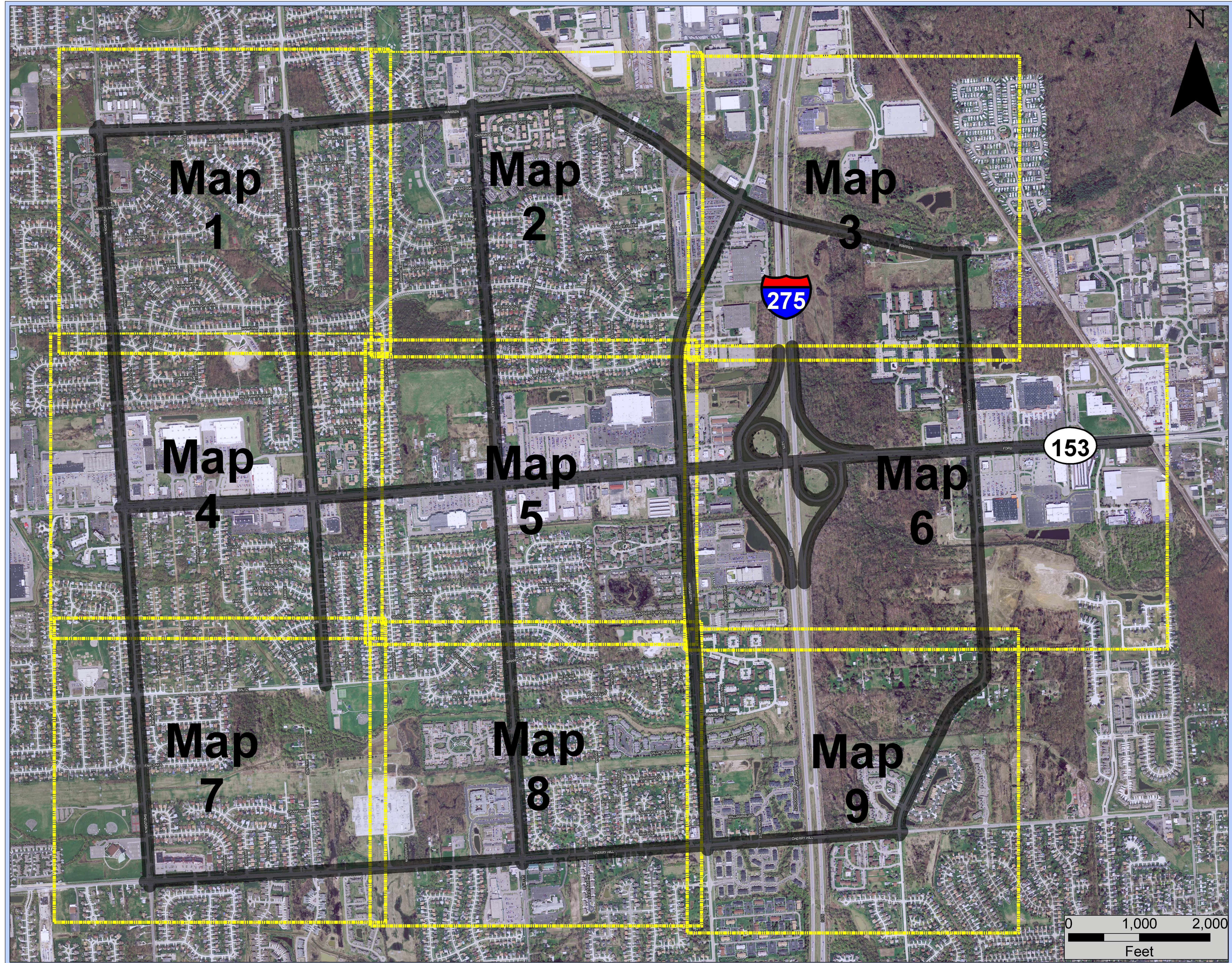
What is Access Management?

"A set of proven techniques to help reduce # of crashes, improve safety, reduce congestion, preserve flow of traffic, and enhance the value of private land development"

Possible Study Area Concerns

- Driveways in close proximity to an intersection or too close together
- Inability to safely make left turns from or into driveways
- Open frontage causes confusion to motorists
- Multiple drives to a shared development

Access Management



Where are you located and what concerns do you have regarding access to driveways on Ford Road?
Larger scale maps are available on the side tables for more detail.