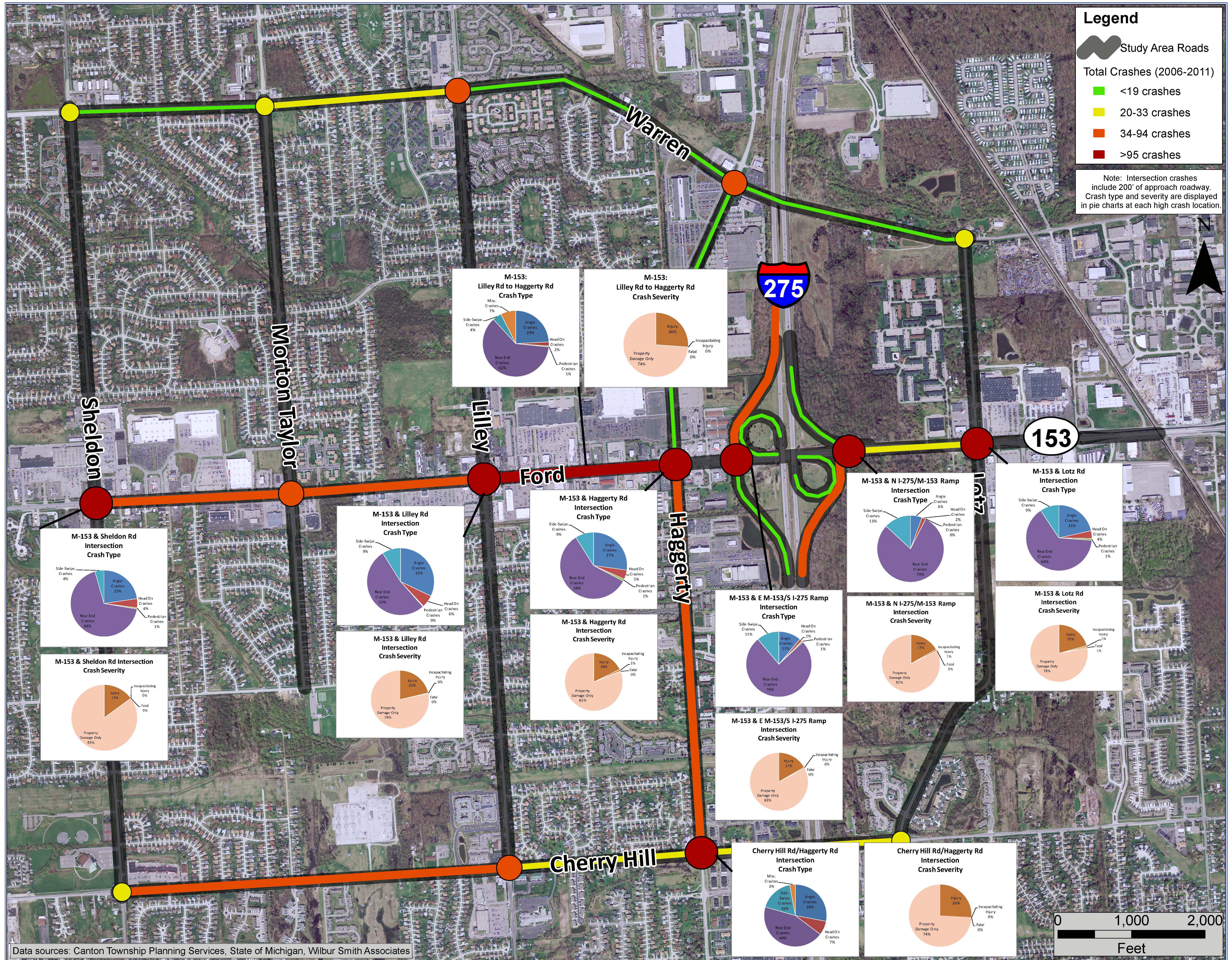


# Crash History (2006 – 2011)



# I-275 at M-153 (Ford Road) Area Traffic and Environmental Study

# Road Safety Audit

## WHAT

A Road Safety Audit (RSA) is the formal safety performance examination of an existing or future road or intersection by an independent, multidisciplinary team.

## WHY

It qualitatively estimates and reports on potential road safety issues and identifies opportunities for improvements in safety for all road users.

## WHEN

Ongoing

## WHERE

M-153 / I-275 Interchange and Surrounding Area

## BENEFITS of RSA

- May help produce designs that reduce the number and severity of crashes
- May reduce costs by identifying safety issues and correcting them before projects are built
- Promote awareness of safe design practices
- Integrate multimodal safety concerns
- Consider human factors in all facets of design

## RSA Procedures

