

M-153 (Ford Road) at I-275 Area Traffic and Environmental Study

Public Information Meeting

May 30, 2013

5-7 p.m.

Summit on the Park



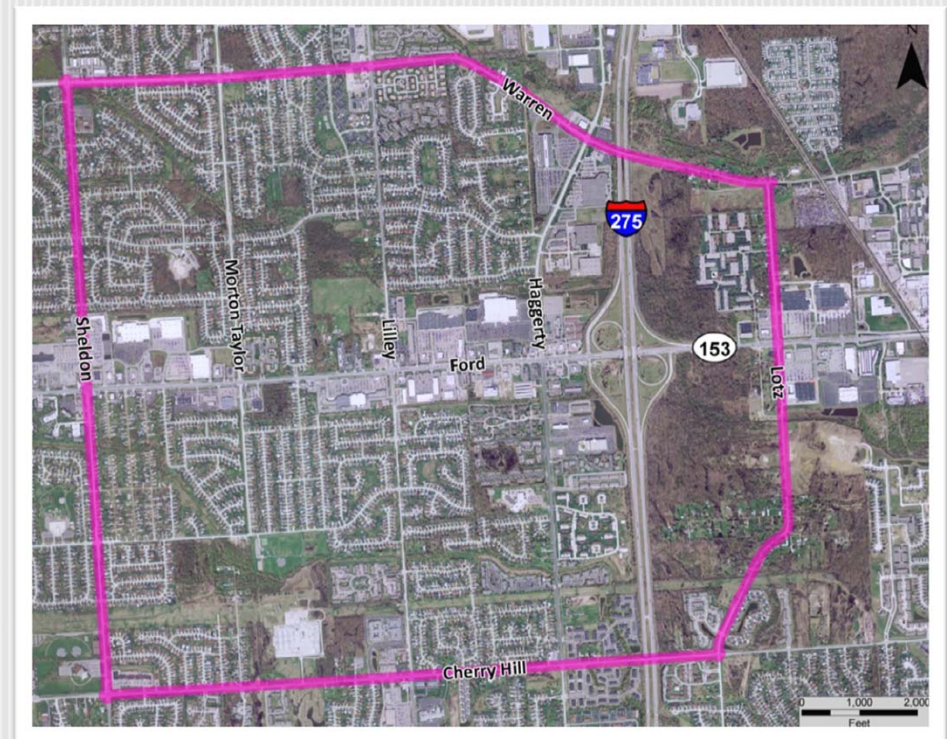
Meeting Purpose

- Present project history
- Present what we heard
 - Illustrative Alternatives
 - Practical Alternatives
 - Final Purpose and Need
- Present gathered data
 - Crash Data
 - Environmental Constraints
- Present the Preferred Alternative



Introduction

- Study Area
 - Warren Road south to Cherry Hill Road
 - Sheldon Road east to Lotz Road
- Why are we here?
 - Complete a Traffic and Environmental Study
 - Propose safety improvements



Technical Advisory Team

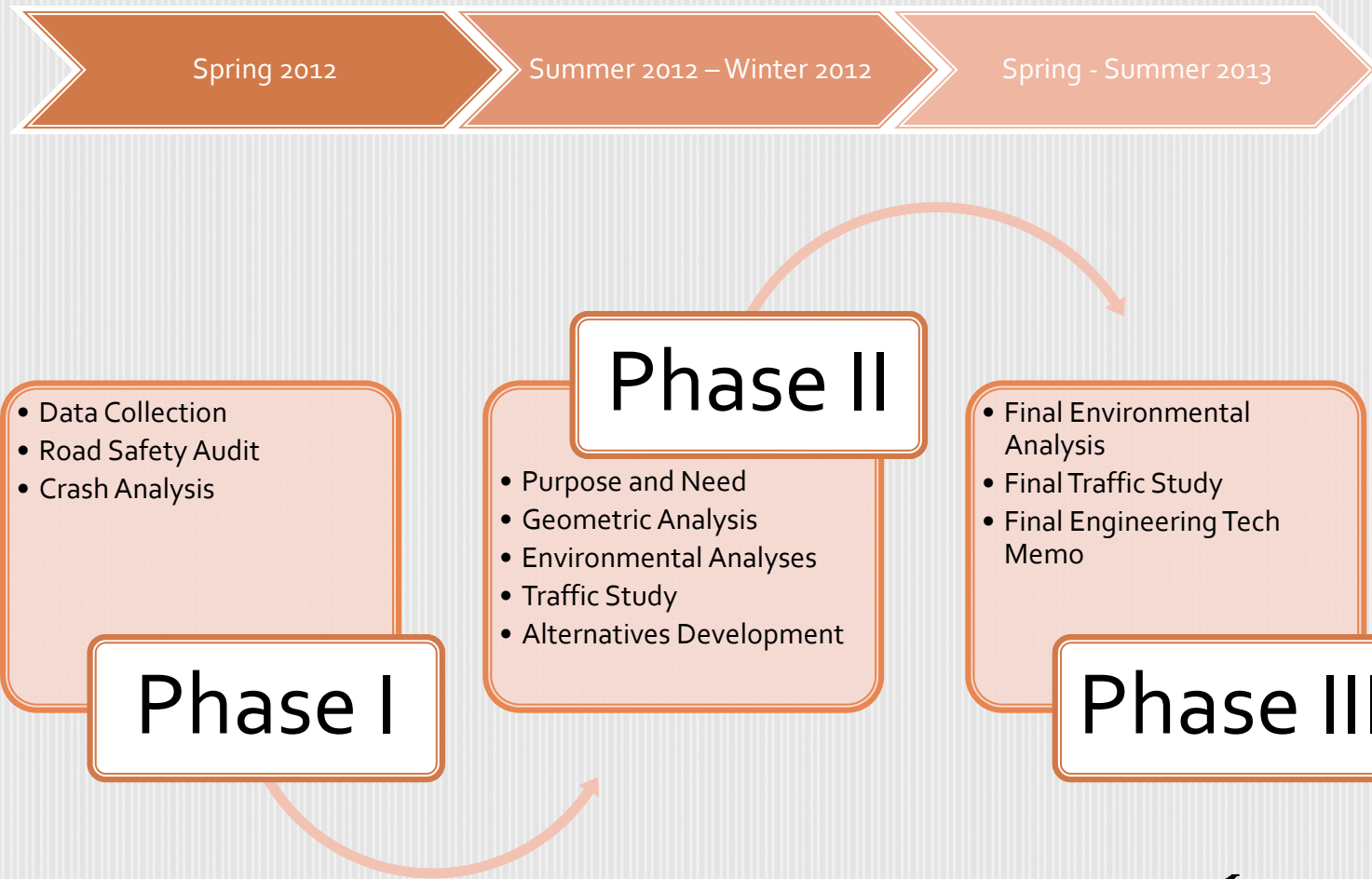


The Technical Advisory Team (Study Team) was integral in the planning and decision-making process from the moment the project began

Prior and Current Work

- I-275/Ford Road Interchange Traffic Operations Study - 2003
- Western Wayne Transportation Improvement Plan (WWTIP) - 2006
- Per federal guidelines, we are assessing whether an environmental study is required and ensure alternatives are working toward all requirements for the environmental process

Project Schedule



What Have We Done?

- Data collection
 - Utilities, traffic data, crash history, environmental constraints
- Traffic Analysis
- Road Safety Audit
- Public Information Meeting #1 (June 7, 2012)
- Public Information Meeting #2 (Oct. 11, 2012)
- Public Information Meeting #3 (March 27, 2013)
- Established final project purpose and need
- Developed Illustrative Alternatives
- Developed Practical Alternatives
- Determined Preferred Alternative



Next Steps...

- Solicit comments on the Preferred Alternative
- Fine-tune Preferred Alternative
- Finalize Traffic and Environmental Study



Contact Information

- We want to hear from you
 - Write your comments on a comment sheet today, e-mail or contact us at the Taylor Transportation Service Center (TSC)

Gorette Yung, Project Manager

MDOT Taylor TSC

6510 Telegraph Road

Taylor, MI 48180

313-375-2400

E-mail questions to: yungg@michigan.gov

E-mail comments to: MDOT-ford275@michigan.gov

More information at: www.michigan.gov/mdotstudies

Conclusion

Your feedback is important and appreciated

Please remember to sign in and comment
before leaving today or e-mail us

Thank you for coming!