

M-153 (Ford Road)
at I-275 Area
Traffic and
Environmental Study

Project Purpose and Need

Project Purpose:

The project's purpose is to improve operational service on M-153 (Ford Road) and support local land use within the study area. Improving operational service on M-153 may also involve improvements to the network of local roads within the study area. The study area for this project is defined by Lotz Road to the east to Sheldon Road to the west; and Warren to the north to Cherry Hill to the south.

The project will need to improve operational service on M-153 (Ford Road) between Lotz Road and Sheldon Road, without degrading I-275 operations, and will:

- Consider improvements to key intersections along M-153 at Lotz, Haggerty, Lilley, Morton Taylor, and Sheldon roads
- Consider improvements on M-153 and on local roads benefitting the operation of M-153
- Incorporate existing and future transportation needs while respecting local land use
- Increase users' safety and convenient travel while serving key destinations
- Better separate and prioritize commuter, business, and residential traffic
- Give attention to truck traffic
- Support smart sustainable growth and apply access management principles

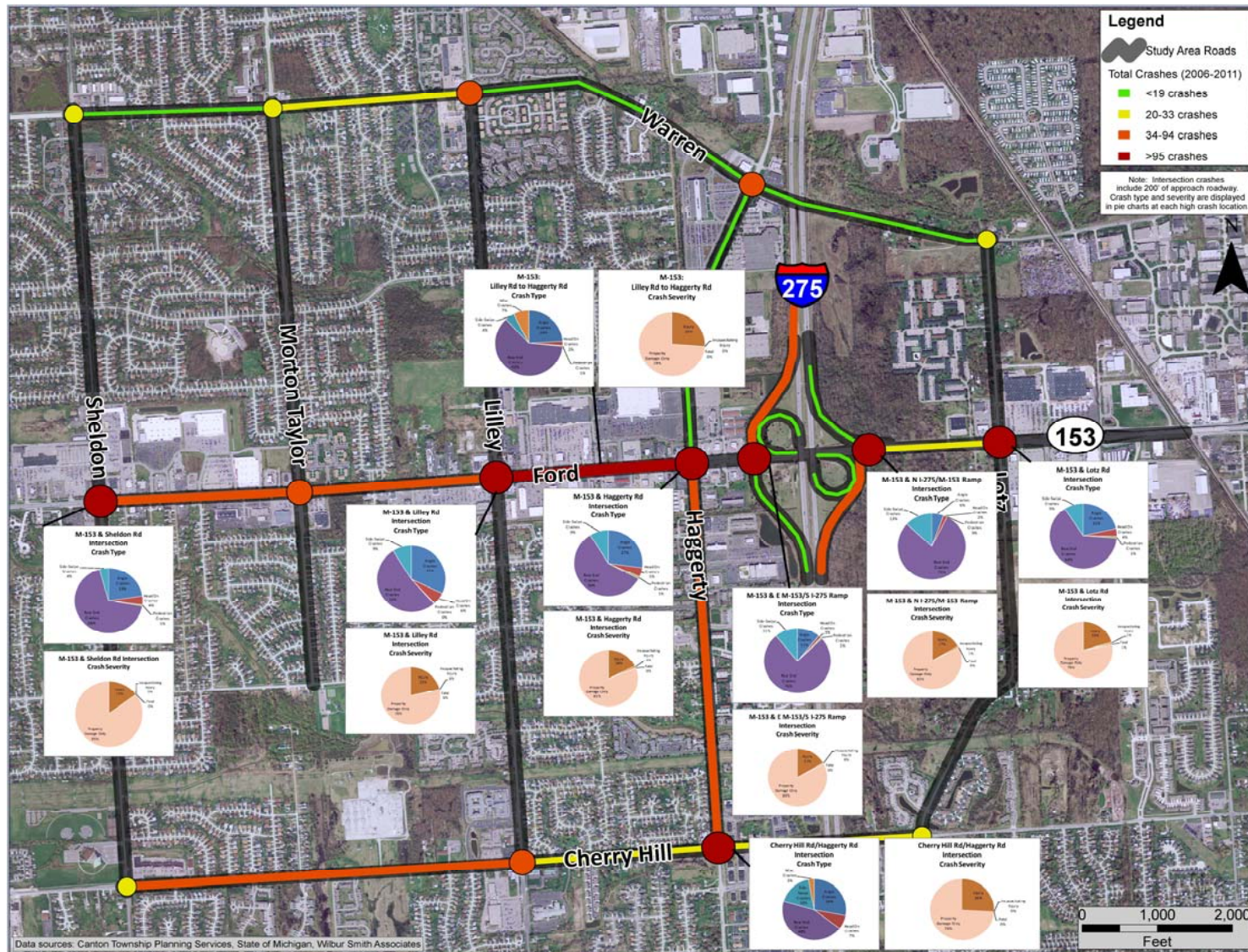
Project Need:

The project is needed as a result of:

- Growing use of M-153 (Ford Road) by commuters, businesses, and residents
- Traffic operational levels of service at key intersections along the M-153 corridor
- Current level of safety
- Decreasing traffic flow and mobility along M-153

M-153 (Ford Road)
at I-275 Area
Traffic and
Environmental Study

Crash History (2006-2011)



M-153 (Ford Road)
at I-275 Area
Traffic and
Environmental Study

Project Constraints

