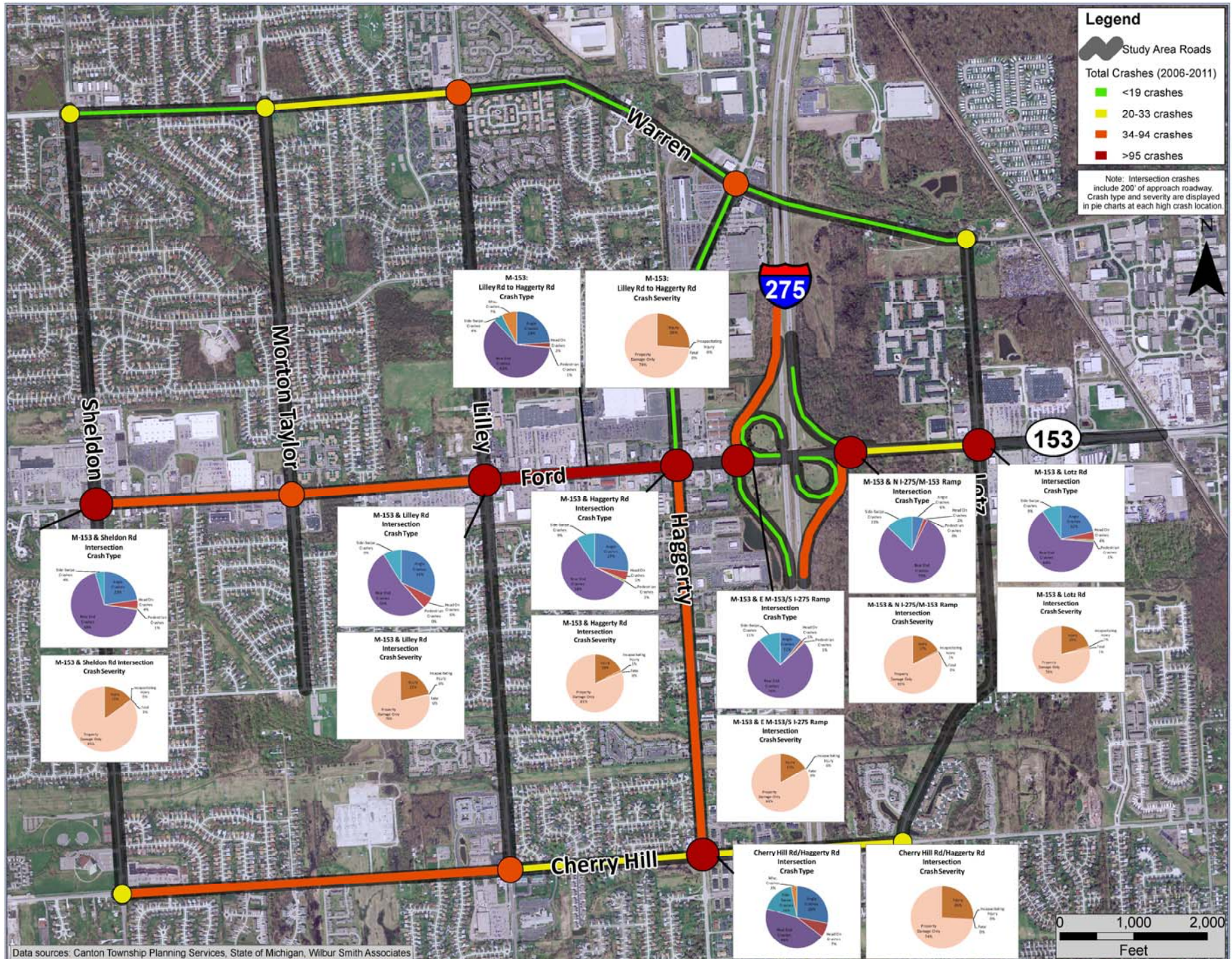


Crash History (2006 – 2011)



I-275 at M-153 (Ford Road) Area Traffic and Environmental Study

Road Safety Audit

WHAT

A Road Safety Audit (RSA) is the formal safety performance examination of an existing or future road or intersection by an independent, multidisciplinary team.

WHY

It estimates and reports on potential road safety issues and identifies opportunities for safety improvements for all road users.

WHEN

Ongoing

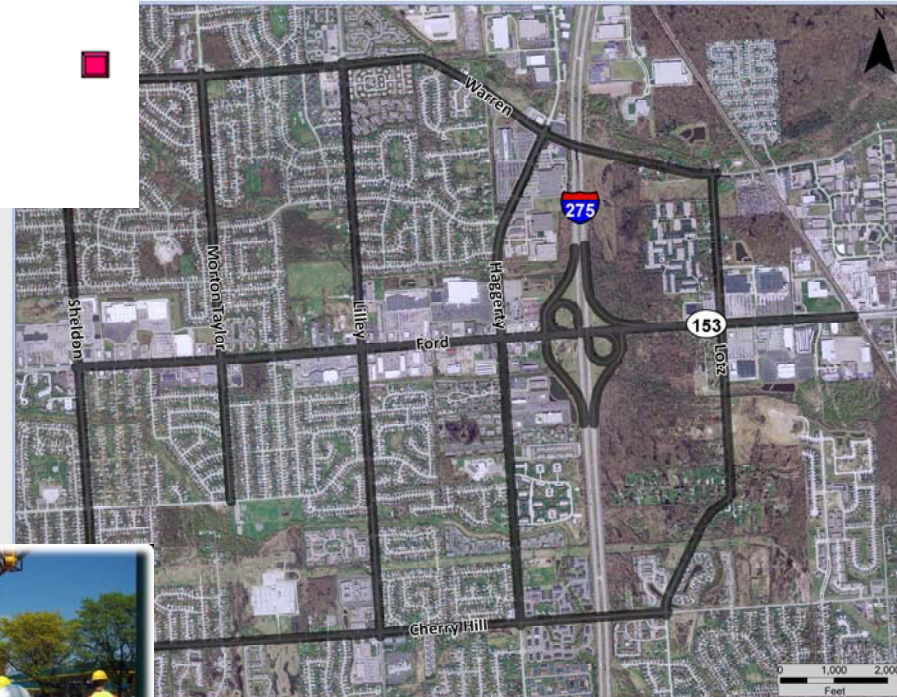
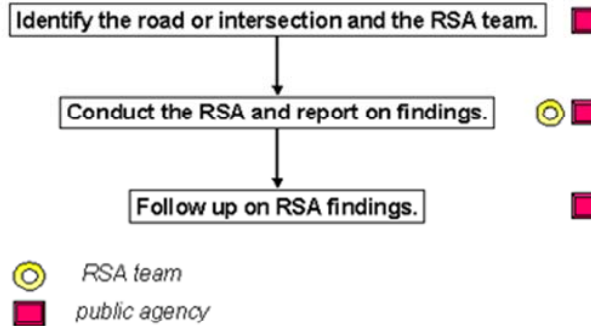
WHERE

M-153 / I-275 interchange and surrounding area

BENEFITS of RSA

- May help produce designs that reduce the number and severity of crashes
- May reduce costs by identifying safety issues and correcting them before projects are built
- Promote awareness of safe design practices
- Integrate multimodal safety concerns
- Consider human factors in all facets of design

RSA Procedures



Project Constraints

