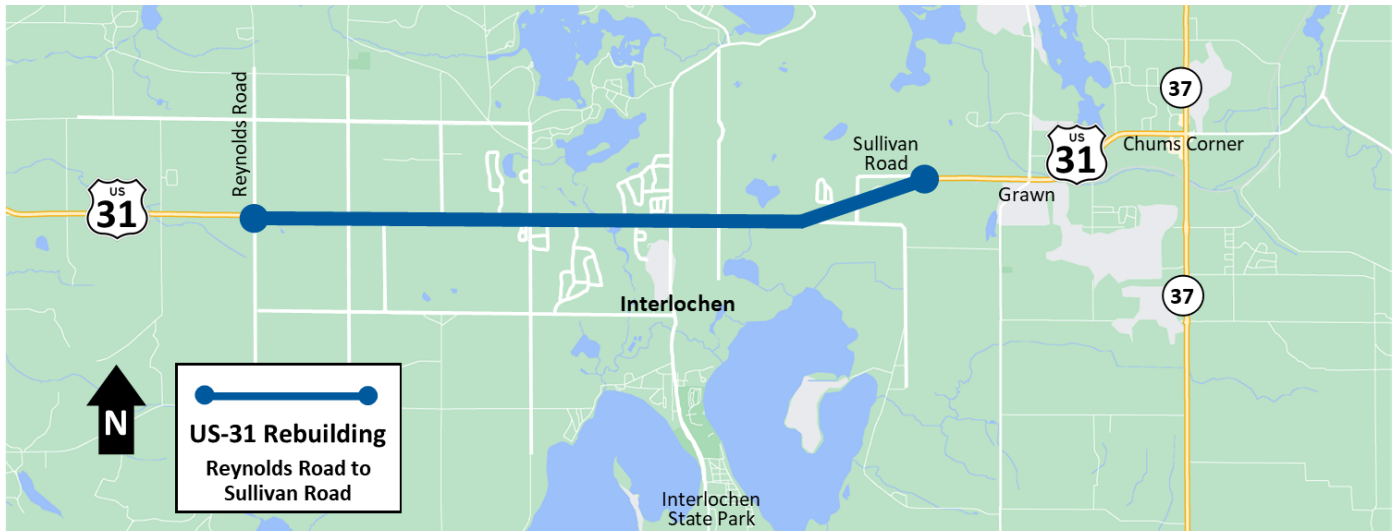


US-31 Rebuilding Project, Reynolds Road - Sullivan Road

Benzie and Grand Traverse Counties

2025-2026



Project Details:

The Michigan Department of Transportation (MDOT) plans to rebuild a 7.8-mile section of US-31, from Reynolds Road to Sullivan Road in Benzie County and Grand Traverse County in 2025-2026. The proposed rebuilding project includes widening to improve pavement condition and safety with the addition of center left-turn lanes, rumble strips, and access management where possible. The South Long Lake Road/J. Maddy Parkway intersection will be reconstructed as a two-lane roundabout.

Safety Benefits

- New center left-turn lane throughout corridor
- Widened paved shoulders with rumble strips
- Access management improvements
- Intersection improvement at South Long Lake Road/J. Maddy Parkway intersection
- American with Disabilities Act (ADA)-compliant ramps and crosswalks at South Long Lake Road/J. Maddy Parkway intersection
- Improved overall safety

Scan me for the
project page and
interactive map!



FOR MORE INFORMATION:

517-241-2400

Michigan.gov/MDOT

MDOT: Serving and connecting people, communities, and the economy through transportation.

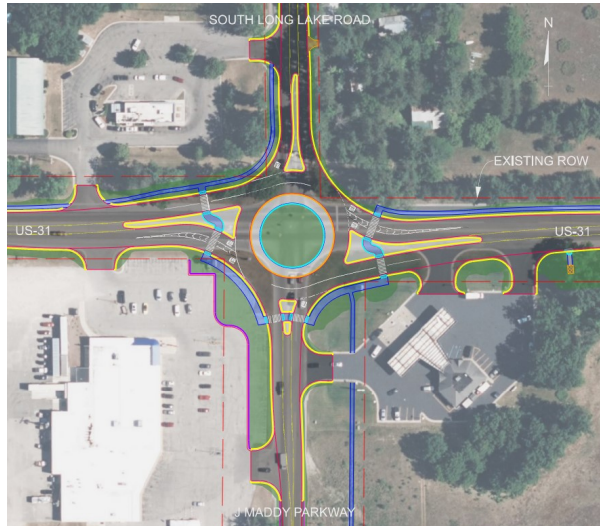


Safety Improvements

Center Left-Turn Lane Addition and Corridor-wide Improvements

- New center left-turn lanes
- Widened paved shoulders with rumble strips
- Access management improvements

South Long Lake Road/J. Maddy Parkway Two-Lane Roundabout



- Two-lane roundabout to accommodate personal travel, nonmotorized users, commercial truck traffic, public transportation, and emergency services.
- Includes ADA-compliant ramps and crosswalks for pedestrians and non-motorized users.
- Roundabouts improve safety by reduced high-speed, head-on and angle crashes. This roundabout is anticipated to further reduce all intersection crashes by 55 percent, with fatal and injury-related crashes reduced by 78 percent.

Preliminary Schedule

