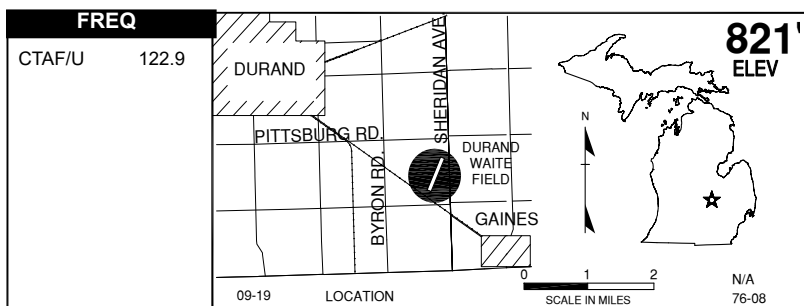
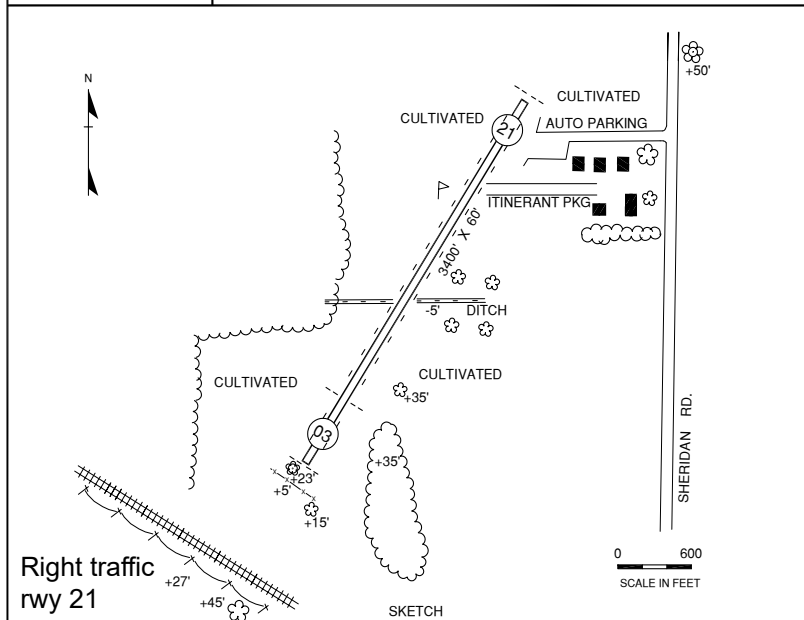


# DURAND, WAITE FIELD (29M)



**D**



**RWY LENGTH BEYOND DISPLACED THR**  
 03/ 2800'  
 21/ —

**COORDINATES**  
 42° 53.44' N  
 83° 55.92' W

**License**  
 Basic Utility

**FM CITY:** 2.8 mi SE  
**LGT:** None  
**MGR:** L. A. Waite  
**PH:** 989-288-3156 (Mgr Res)  
 989-288-0564  
**FBO:** None  
**ATND:** Unatnd

**NAV AIDS:** 116.9 (FNT) 242° 10.9 NM to fld,  
 NDB (DRM) 218 KHz at fld.  
**FUEL:** None  
**RPR:** None  
**WX:** None  
**SNW RMVL:** None  
**TRNSP:** None  
**MEALS:** In town  
**RON:** In town

- Right traffic rwy 21.
- Rwy soft when wet.
- Rwy rough with sloping terrain.
- Deer on and in/ov arpt.