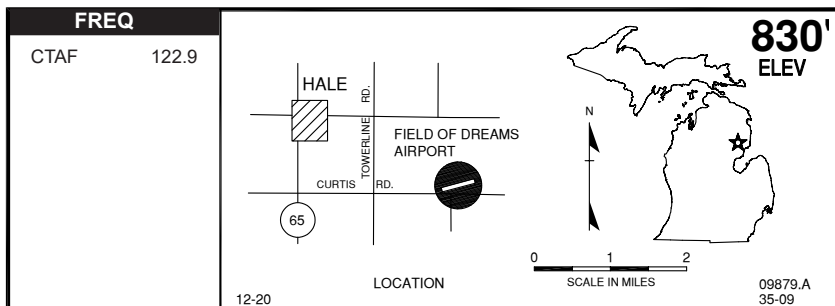
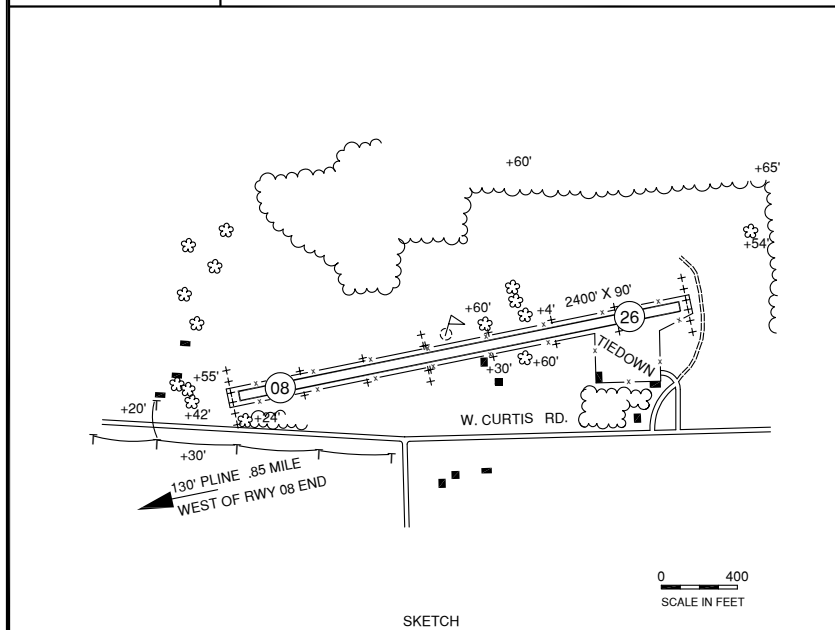


HALE, FIELD OF DREAMS (H80)



H



RWY LENGTH BEYOND DISPLACED THR

08/ 1400'
 26/ —

COORDINATES

44° 21.88'N
 083° 45.76'W

License
 Basic Utility

FM CITY: 3.0 mi SE

LGT: None

MGR: Jeffrey Blust
 Clint Loomis, Asst

PH: 810-599-1930 (mgr)
 989-728-3893 (asst)

FBO: None

ATND: Unatnd, Arpt CLSD Nov - Apr

NAV AIDS: 116.1 (ASP) 260° 16.0 NM to fld.

FUEL: None

RPR: None

WX: None

SNW RMVL: No-vfy cond

TRNSP: None

MEALS: In town, 3.0 mi

RON: In town, 3.0 mi

- Low level military jets opr near arpt. Arpt lies within PIKE WEST MOA & within 3 mi of military training route VR 1624.
- Rwy may be soft in spring, west end, verify cond.
- Electric perimeter fence.
- Rwy 08 130' unmarked pline 0.85 mi fm rwy end.
- Farm equip parked near rwy end.