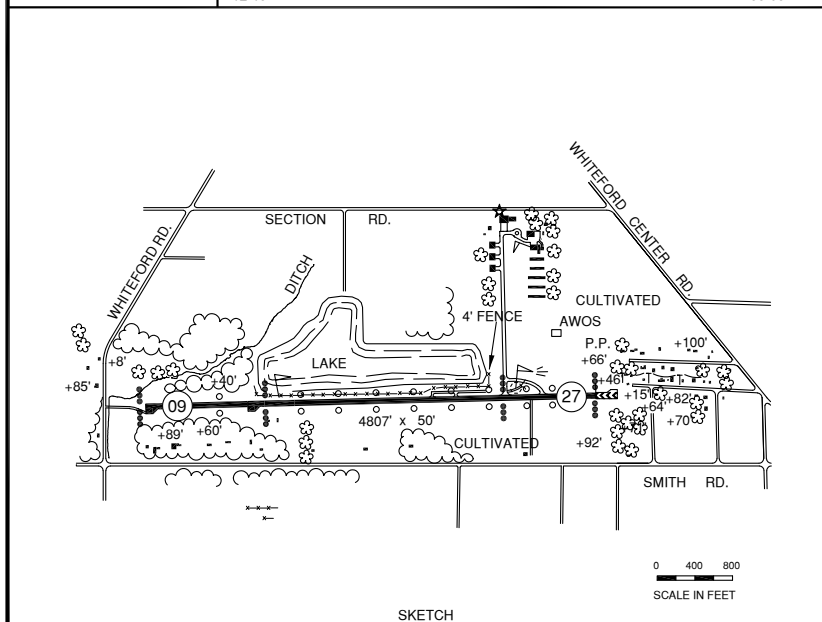
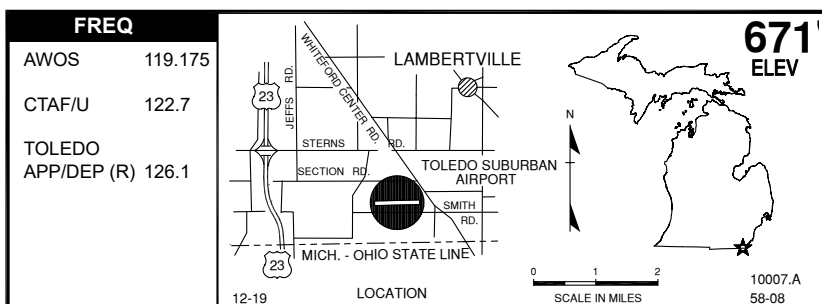


# LAMBERTVILLE, TOLEDO SUBURBAN (DUH)



**RWY LENGTH BEYOND DISPLACED THR**  
 09/ 3533'  
 27\*/ 3815'

**COORDINATES**  
 41° 44.15N  
 083° 39.35'W

**License**  
 Basic Utility

**FM CITY:** 2.0 mi SW  
**LGT:** ROTG BCN, NSTD MIRL PCL 7X  
**MGR:** Thomas Trumbull  
**PH:** 734-856-6103  
**FBO:** Suburban Avn 734-856-6103  
**ATND:** 0800 - 1700

**NAV AIDS:** IAP, 113.1 (VWV) 359° 17.1 NM to fld.  
**FUEL:** 100LL  
**RPR:** Major A&P  
**WX:** AWOS 734-856-1563, Wx briefing system  
**SNW RMVL:** Yes  
**TRNSP:** Taxi  
**MEALS:** In town, 1.0 mi  
**RON:** In town, 2.0 mi

- Aft hr restroom by fuel pumps \*1227
- Noise sensitive area nearby, climb to 1200' MSL prior to turn out.
- Deer on & invov arpt.