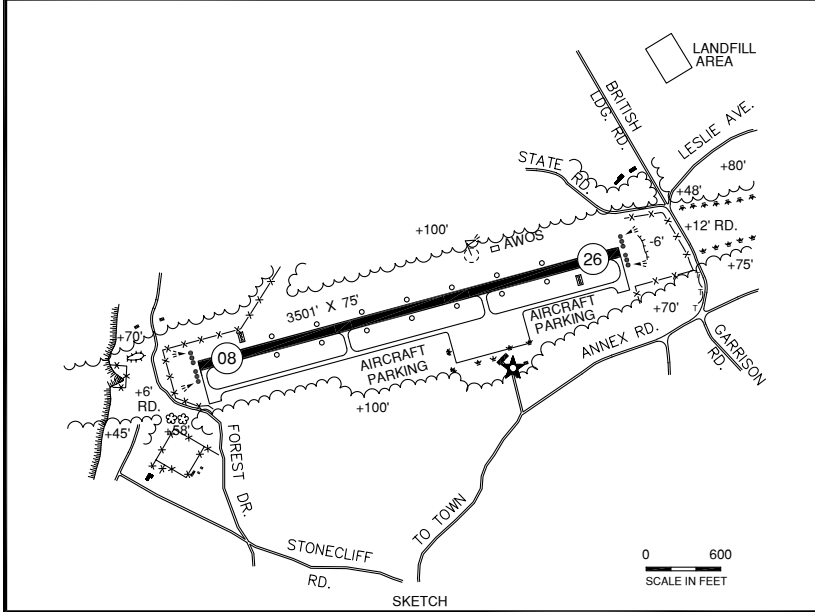
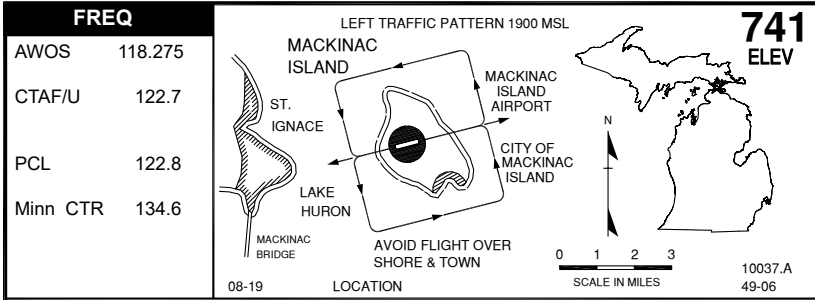


MACKINAC ISLAND (MCD)



M

RWY LENGTH BEYOND DISPLACED THR
 08/ —
 26/ —

COORDINATES
 45° 51.90'N
 084° 38.23'W

License
 General Utility

FM CITY: 2.0 mi NW
LG: ROTG BCN. MIRL, PAPI, REILS—STD
 PCL 122.8.
MGR: Myron Johnson
 Justin Wright, Asst
PH: 906-847-3231
FBO: None
ATND: 0800-1700

RDO NAV AIDS: IAP, 111.8 (PLN) 011° 14.1
 NM to fld.
FUEL: None
RPR: None
WX: AWOS 906-847-3778,
 WX briefing system
SNW RMVL: Yes
TRNSP: Taxi (horse carriage)
MEALS: In town, 2.0 mi
RON: In town, 2.0 mi

- TPA 1900' MSL (1159' AGL) .
- Noise abatement proc—climb to TPA (1900' MSL) before turn, avoid flight over shore & town.
- T&G operations prohibited.
- Lndg fee.
- Admin bldg access—depress V, then simultaneous III-II, then I.
- Pilots are encouraged to use PITOT covers while parked & to check PITOT tubes prior to dep due to mud daubers.
- Birds on & invof aprt. Flocks of seagulls invof landfill 0.3 mi NE.
- No camping allowed.

MACKINAC ISLAND ROAD & TRAILS

M

