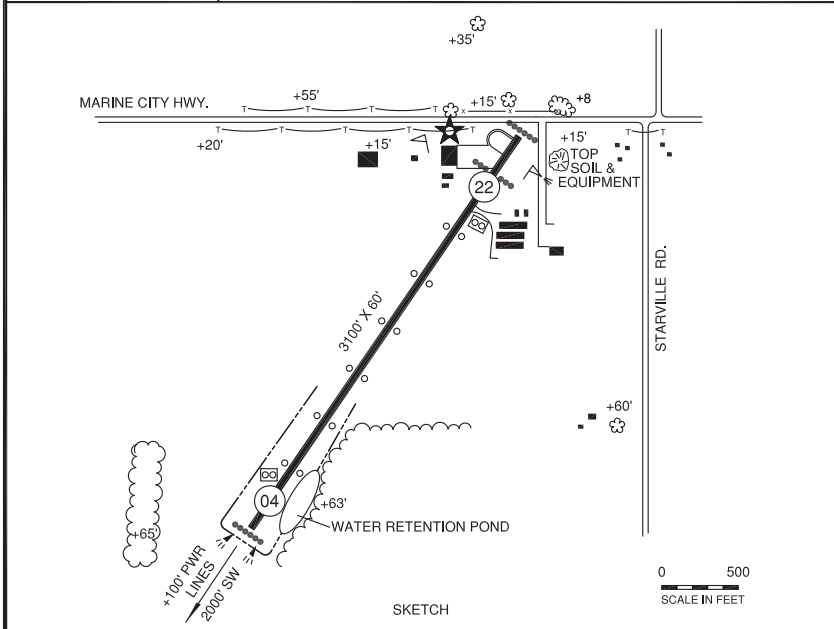
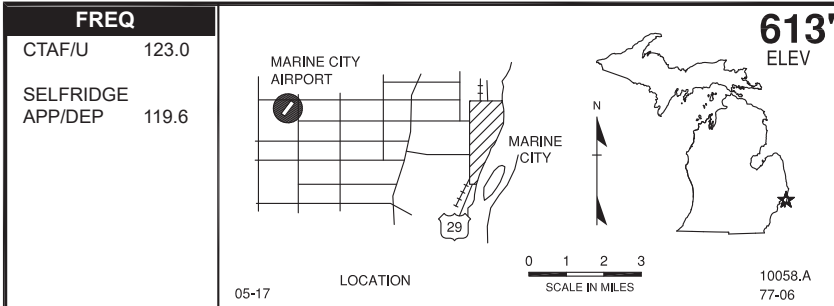


# MARINE CITY (76G)



**RWY LENGTH BEYOND DISPLACED THR**  
04/ —  
22/ 2805'

**COORDINATES**  
42° 43.28'N  
082° 35.78'W

**License**  
General Utility

**FM CITY:** 4.0 mi W  
**LGT:** ROTG BCN, MIRL (NSTD)\* SS-SR.  
PAPI's 4/22, REILS 4, PCL  
**MGR:** Penny Faucher  
**PH:** 810-765-8289  
810-650-7519 (Mgr cell)  
**FBO:** Marine City Avn 810-765-8289  
**ATND:** Mon-Fri 0800-1700  
Sat-Sun On Call

**RDO NAV AIDS:** 116.9 (FNT) 295° 61 NM  
to fld.  
**FUEL:** 100LL  
**RPR:** Major A&P  
**WX:**  
**SNW RMVL:** Yes  
**TRNSP:** Taxi in town, CC  
**MEALS:** In town, 5.0 mi  
**RON:** In town, 5.0 mi

- \*For airport services call 810-650-7519.
- Rwy 04/22 \*MIRL lctd nstd 23' fm rwy edge.
- Rwy 04 apch +100' pwr line, 2000' SW.
- TPA 1613 (1000 AGL)
- For IFR clearance ctc Selfridge RAPCON 0700-2300 lcl 119.6 or call 586-239-5706, and Cleveland Center 2300-0700 lcl 132.25 or call 440-774-0448