
2023

Michigan Gaming
Control Board

HORSE RACING REPORT



To the Governor

Calendar Year 2023



Michigan Gaming Control Board
3062 W. Grand Blvd. L-700
Detroit, MI 48202

Submitted April 15, 2024
Pursuant to the
Horse Racing Law of 1995
Section 6(3) of Act No. 279 of Public Act of 1995
Section 431 of Act No. 505 of Public Act of 1998

Please direct inquiries to
Dave Murley, Deputy Director

This document is also available online at
michigan.gov/mgcb



GRETCHEN WHITMER
GOVERNOR

STATE OF MICHIGAN
MICHIGAN GAMING CONTROL BOARD
DETROIT

HENRY L. WILLIAMS, JR.
EXECUTIVE DIRECTOR

April 15, 2024

The Honorable Gretchen Whitmer,
Governor of the State of Michigan

TO GOVERNOR GRETCHEN WHITMER AND THE MICHIGAN LEGISLATURE:

In accordance with Section 6(3) of Act No. 279 of the Public Acts of 1995, the Horse Racing Law of 1995, as amended, the Horse Racing Annual Report to the Governor for calendar year 2023 is hereby submitted.

Sincerely,

/s/

Henry L. Williams, Jr.
Executive Director



Michigan Gaming Control Board

Horse Racing Annual Report 2023

Introduction

Michigan's horse racing industry will benefit from \$6.5 million in taxes collected in 2023 on various forms of betting regulated by the Michigan Gaming Control Board (MGCB), including internet wagering and simulcast wagering on horse races, internet casino gaming, and internet sports betting.

Simulcast wagering — wagering at a Michigan horse track on live races occurring at other venues — produced \$1.5 million in tax revenue in 2023. The State of Michigan does not tax wagers placed at Northville Downs on live races.

Michigan's horse racing law was amended in December 2019 to allow internet wagering on simulcast horse races through a third-party facilitator. Four facilitators provide this service in Michigan: Churchill Downs TIC d/b/a/ TwinSpire, TVG Network, XpressBet and NYRABets LLC. Third-party facilitator tax revenue was nearly \$884,000 in 2023.

A portion of the taxes on internet casino gaming and internet sports betting by law go to the Agriculture Equine Industry Development Fund (AEIDF) annually. Each year, five percent of the Detroit casinos' taxes from internet sports betting and internet gaming is allocated to the AEIDF. The funding is capped at \$3 million per fiscal year from each tax source. In calendar year 2023, the fund received \$3.8 million total revenue from the two forms of gaming. This included more than \$3.1 million in internet casino gaming taxes and just over \$687,000 in internet sports betting taxes.

The AEIDF promotes economic development by providing funding in Michigan's rural areas. It supports the breeding of horses in Michigan. It promotes horse racing fairs in the state as well as at Northville Downs. The AEIDF also supports MGCB's regulatory expenses, including race personnel, licensing, and blood testing.

In 2023, Northville Downs was the only operating track in Michigan and it offered 68 live standardbred race dates. The track was allocated 52 race dates and was granted 16 additional dates of live standardbred racing from September 30 through November 25 after track management and the Michigan Harness Horsemen's Association requested an extension of the season.



Michigan Gaming Control Board

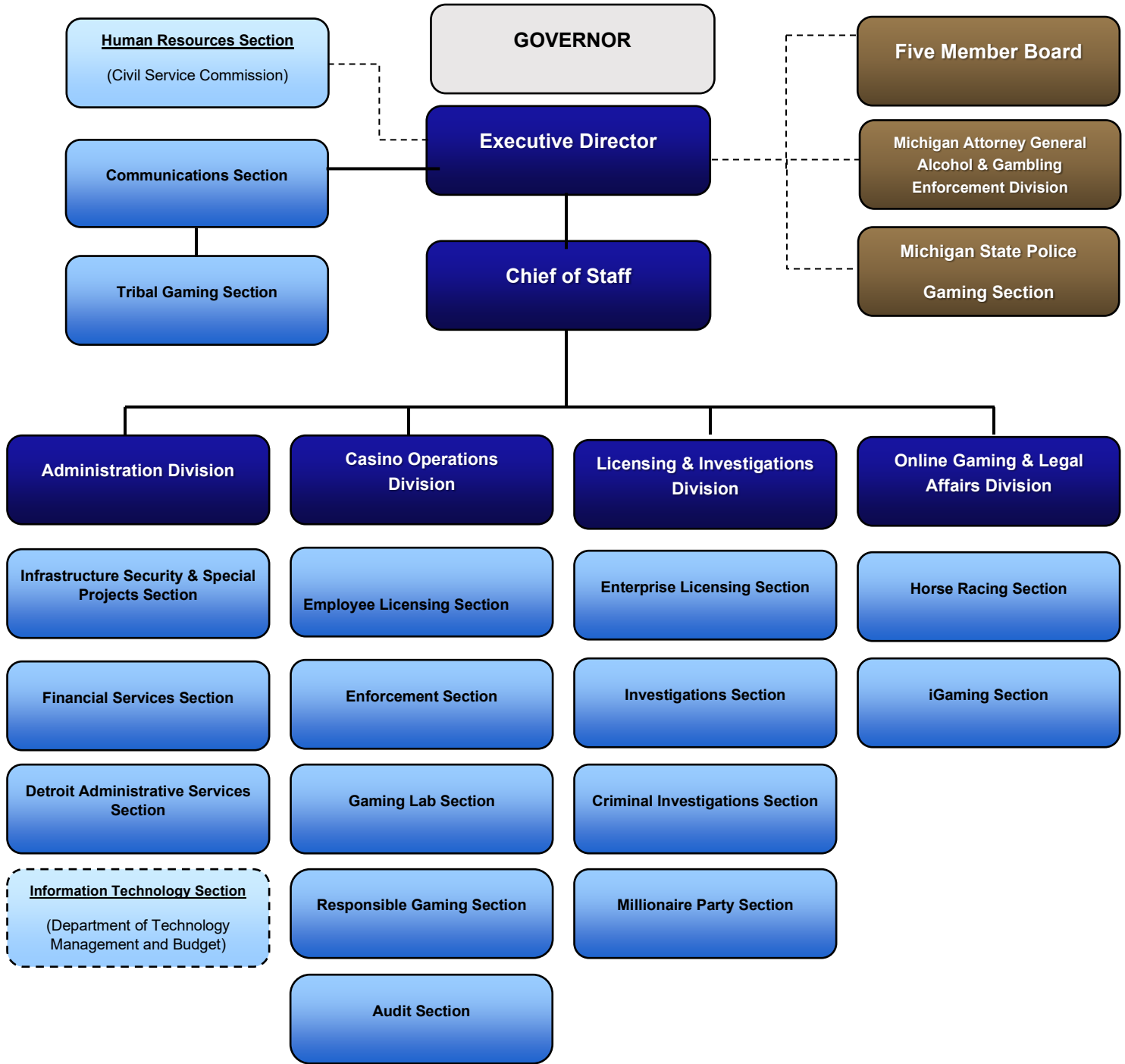
Horse Racing Annual Report 2023

TABLE OF CONTENTS

<u>Section:</u>	<u>Page:</u>
Organizational Chart	1
The Michigan Gaming Control Board at Work	2
Map of Michigan's Racetrack	3
Revenues and Expenditures	4
Licensing	5
Northville Downs Race Meet Summary	6
Third-Party Facilitators	7
Northville Downs 2024 Race Dates Calendar	8



Organizational Chart





Michigan Gaming Control Board

Horse Racing Annual Report 2023

The Michigan Gaming Control Board at Work

The MGCB has many roles and performs numerous duties daily. Below are some of our primary responsibilities:

STEWARDS

- Oversight over all aspects of pari-mutuel racing at each track during a race meeting
- Monitor and judge all live racing to ensure safety, enforce racing statutes and rules, and ensure a fair opportunity to compete
- Make decisions, hold hearings, and issue rulings to enforce compliance with laws and rules in all matters related to racing
- Review occupational license applications and evaluate their suitability for licensing
- Approve or deny applications

LICENSING STAFF

- Accept, process, and generate occupational license applications of anyone requesting approval to participate in Michigan pari-mutuel horse racing
- Collect and record occupational license fees and fines
- Review daily racing programs
- Maintain licensee data in the MGCB licensing system
- Provide general office assistance to MGCB track staff

REGULATION OFFICERS

- Carry out investigations into alleged violations of laws and rules
- Conduct investigations to determine suitability of applicants for licensing
- Perform drug and alcohol testing on licensees as provided for by the Horse Racing Law and MGCB administrative rules
- Oversee racetrack security in collaboration with track security staff
- Work with other jurisdictions to monitor licensee activity
- Regulation officers from the Criminal Investigations section are assigned to horse racing on a part-time basis

VETERINARIANS

- Monitor and safeguard the physical well-being of participating racehorses
- Oversee the MGCB equine drug testing programs, including the collection and testing of equine blood, urine and other samples
- Implement vaccination protocols to protect racehorses and prevent the spread of infectious equine diseases
- Examine horses pre- and post-race for soundness to race and to continue racing
- Oversee the laborers who procure the drug samples



Michigan Gaming Control Board

Horse Racing Annual Report 2023

Northville Downs

301 South Center Street

Northville, MI 48167

P: 248-349-1000





Michigan Gaming Control Board

Horse Racing Annual Report 2023

REVENUES AND EXPENDITURES

January 1, through December 31, 2023

SUMMARY OF REVENUES

Simulcast Wagering Taxes*	\$1,537,335
Third-Party Facilitator Taxes**	883,857
Occupational License Fees	36,063
Outs***	128,801
Racing Fines	11,300
Track Licenses	1,000
Third-Party Facilitator Licenses	0
Revenue Transfers/Reductions	<u>(24,048)</u>
TOTAL REVENUES	\$2,574,308

SUMMARY OF EXPENDITURES

Salaries, Wages, Retirement and Benefits	\$1,174,054
Contractual Services, Supplies and Materials	252,611
Travel	<u>13,551</u>
TOTAL EXPENDITURES	\$1,440,216

*Simulcast Wagering Taxes were calculated based on date earned and verified by independent auditors. Timing differences exist when reconciling to the State accounting system due to the actual depositing of revenue occurring in the subsequent calendar year.

**Licensed Third-Party Facilitators allow Michigan residents the opportunity to place wagers on horse races from a funded account. Third-Party Wagering is commonly known as Advance Deposit Wagering.

***"Outs" are uncashed winning tickets. Governed by Public Act 505, 1998, the race meeting licensee (the track) keeps 50% of the winning payout on the tickets and the other 50% is deposited into the Agriculture Equine Industry Development Fund.

Note: The above represents horse racing-related revenues and expenditures deposited and expended from the Agriculture Equine Industry Development Fund (Fund). The Fund also receives internet gaming tax revenue pursuant to the Lawful Internet Gaming Act Section 15(1)(c) and internet sports betting tax revenue pursuant to the Lawful Internet Sports Betting Act Section 15(c). For calendar year 2023, the Fund received \$3,198,029 in internet gaming taxes and \$687,366 in internet sports betting taxes. Total Fund revenue provided by the MGCB for calendar year 2023 was 6.5 million.



Michigan Gaming Control Board

Horse Racing Annual Report 2023



LICENSING

The MGCB licensed 611 individuals who held a total of 896 licenses. Some licensees hold more than one license.

The MGCB issues licenses for owners, trainers, assistant trainers, drivers, jockeys, apprentice jockeys, veterinarians, farriers, racing officials, track and association employees, grooms, stable help, vendors, corporations, and partnerships. It also issues temporary licenses for authorized people to access various restricted areas of the track. There are 18 licensing categories.

Licensing forms are available online at: michigan.gov/mgcb and can be downloaded and submitted in person at one of our licensing offices or via fax. The MGCB field office at the track is open during live racing. Office hours vary, and schedules are posted on our website at michigan.gov/mgcb.



NORTHVILLE DOWNS RACE MEETING SUMMARY

	<u>2022</u>	<u>2023</u>
Live Race Dates	61	68
Simulcast Race Dates	360	360
Live Wagering Total	\$ 1,936,146	\$ 2,209,990
Simulcast Wagering Total	<u>50,328,827</u>	<u>43,923,771</u>
Combined Wagering Total	\$52,264,973	\$46,133,761
Winning Tickets Payout	\$37,741,061	\$32,505,175
Simulcast Wagering Tax	\$ 1,761,512	\$ 1,537,335
Track Share Commission	\$ 6,546,123	\$ 5,868,265
City of Northville Breakage	\$ 181,172	\$ 146,824

Winning Tickets Payout – The amount of winnings paid to bettors.

Simulcast Wagering Tax – Simulcast wagers at a licensed track are taxed at 3.5%. Live wagering is not taxed in Michigan. The Simulcast Wagering Tax is calculated daily by the track. Therefore, the difference in the annual calculation and the daily calculation of Simulcast Wagering Tax is due to rounding.

Track Share Commission – The amount the race meeting licensee (track) deducts from the total wagers for services rendered. A portion of the commission is remitted to the contracted horsemen’s association.

Local Government Breakage – Breakage is the difference in cents between the winning pay outs and the nearest dime (or nickel in a minus pool situation). For example, if a winning bet is computed to pay \$3.12 then the bettor receives \$3.10. The breakage of \$0.02 is deposited into a fund distributed and used by the city or township where the track is located. Breakage figures are all breakage incurred at the track during the calendar year.



THIRD-PARTY FACILITATORS

	<u>2022</u>	<u>2023</u>
TVG Network Wagering	\$20,916,970	\$27,027,545
TwinSpires Wagering	46,395,679	43,210,474
Xpressbet Wagering	18,963,466	15,788,549
NYRABets LLC Wagering	<u>1,516,376</u>	<u>2,359,127</u>
Total Third-Party Facilitator (TPF) Wagering	\$87,792,491	\$88,385,695
Total TPF Wagering Tax	\$ 877,925	\$ 883,857





Northville Downs 2024 Race Dates

Note: For updates to the race meet calendar visit the MGCB website at michigan.gov/mgcb.

2024						
NORTHVILLE DOWNS STANDARDBRED RACE DATES						
January						
S	M	T	W	T	F	S
	1	2	3	4	5	6
7	8	9	10	11	12	13
14	15	16	17	18	19	20
21	22	23	24	25	26	27
28	29	30	31			
February						
S	M	T	W	T	F	S
					1	2
3	4	5	6	7	8	9
10	11	12	13	14	15	16
17	18	19	20	21	22	23
24	25	26	27	28	29	
March						
S	M	T	W	T	F	S
					1	2
3	4	5	6	7	8	9
10	11	12	13	14	15	16
17	18	19	20	21	22	23
24	25	26	27	28	29	30
31						
April						
S	M	T	W	T	F	S
	1	2	3	4	5	6
7	8	9	10	11	12	13
14	15	16	17	18	19	20
21	22	23	24	25	26	27
28	29	30				
May						
S	M	T	W	T	F	S
			1	2	3	4
5	6	7	8	9	10	11
12	13	14	15	16	17	18
19	20	21	22	23	24	25
26	27	28	29	30	31	
June						
S	M	T	W	T	F	S
						1
2	3	4	5	6	7	8
9	10	11	12	13	14	15
16	17	18	19	20	21	22
23	24	25	26	27	28	29
30						
July						
S	M	T	W	T	F	S
	1	2	3	4	5	6
7	8	9	10	11	12	13
14	15	16	17	18	19	20
21	22	23	24	25	26	27
28	29	30	31			
August						
S	M	T	W	T	F	S
					1	2
3	4	5	6	7	8	9
10	11	12	13	14	15	16
17	18	19	20	21	22	23
24	25	26	27	28	29	30
31						
September						
S	M	T	W	T	F	S
1	2	3	4	5	6	7
8	9	10	11	12	13	14
15	16	17	18	19	20	21
22	23	24	25	26	27	28
29	30					
October						
S	M	T	W	T	F	S
		1	2	3	4	5
6	7	8	9	10	11	12
13	14	15	16	17	18	19
20	21	22	23	24	25	26
27	28	29	30	31		
November						
S	M	T	W	T	F	S
					1	2
3	4	5	6	7	8	9
10	11	12	13	14	15	16
17	18	19	20	21	22	23
24	25	26	27	28	29	30
December						
S	M	T	W	T	F	S
1	2	3	4	5	6	7
8	9	10	11	12	13	14
15	16	17	18	19	20	21
22	23	24	25	26	27	28
29	30	31				

RACE DATES						
March						
S	M	T	W	T	F	S
					1	2
3	4	5	6	7	8	9
10	11	12	13	14	15	16
17	18	19	20	21	22	23
24	25	26	27	28	29	30
31						
April						
S	M	T	W	T	F	S
	1	2	3	4	5	6
7	8	9	10	11	12	13
14	15	16	17	18	19	20
21	22	23	24	25	26	27
28	29	30				
May						
S	M	T	W	T	F	S
			1	2	3	4
5	6	7	8	9	10	11
12	13	14	15	16	17	18
19	20	21	22	23	24	25
26	27	28	29	30	31	
June						
S	M	T	W	T	F	S
						1
2	3	4	5	6	7	8
9	10	11	12	13	14	15
16	17	18	19	20	21	22
23	24	25	26	27	28	29
30						
July						
S	M	T	W	T	F	S
	1	2	3	4	5	6
7	8	9	10	11	12	13
14	15	16	17	18	19	20
21	22	23	24	25	26	27
28	29	30	31			
August						
S	M	T	W	T	F	S
					1	2
3	4	5	6	7	8	9
10	11	12	13	14	15	16
17	18	19	20	21	22	23
24	25	26	27	28	29	30
31						
September						
S	M	T	W	T	F	S
1	2	3	4	5	6	7
8	9	10	11	12	13	14
15	16	17	18	19	20	21
22	23	24	25	26	27	28
29	30					
October						
S	M	T	W	T	F	S
		1	2	3	4	5
6	7	8	9	10	11	12
13	14	15	16	17	18	19
20	21	22	23	24	25	26
27	28	29	30	31		
November						
S	M	T	W	T	F	S
					1	2
3	4	5	6	7	8	9
10	11	12	13	14	15	16
17	18	19	20	21	22	23
24	25	26	27	28	29	30
December						
S	M	T	W	T	F	S
1	2	3	4	5	6	7
8	9	10	11	12	13	14
15	16	17	18	19	20	21
22	23	24	25	26	27	28
29	30	31				



www.michigan.gov/mgcb