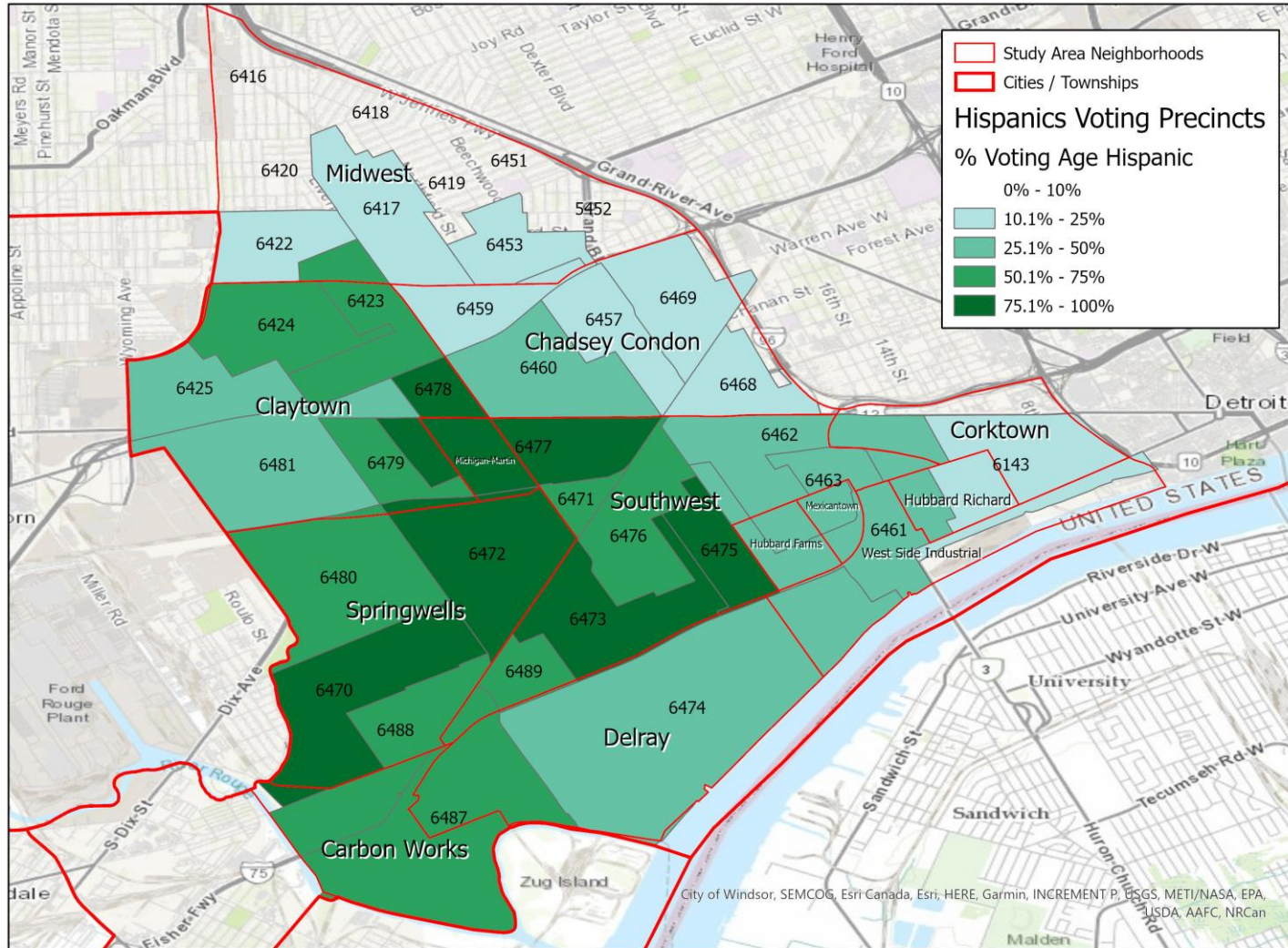


Voting Patterns of Select Minority Groups in Michigan

Dr. Lisa Handley

Hispanic voting patterns: Detroit area

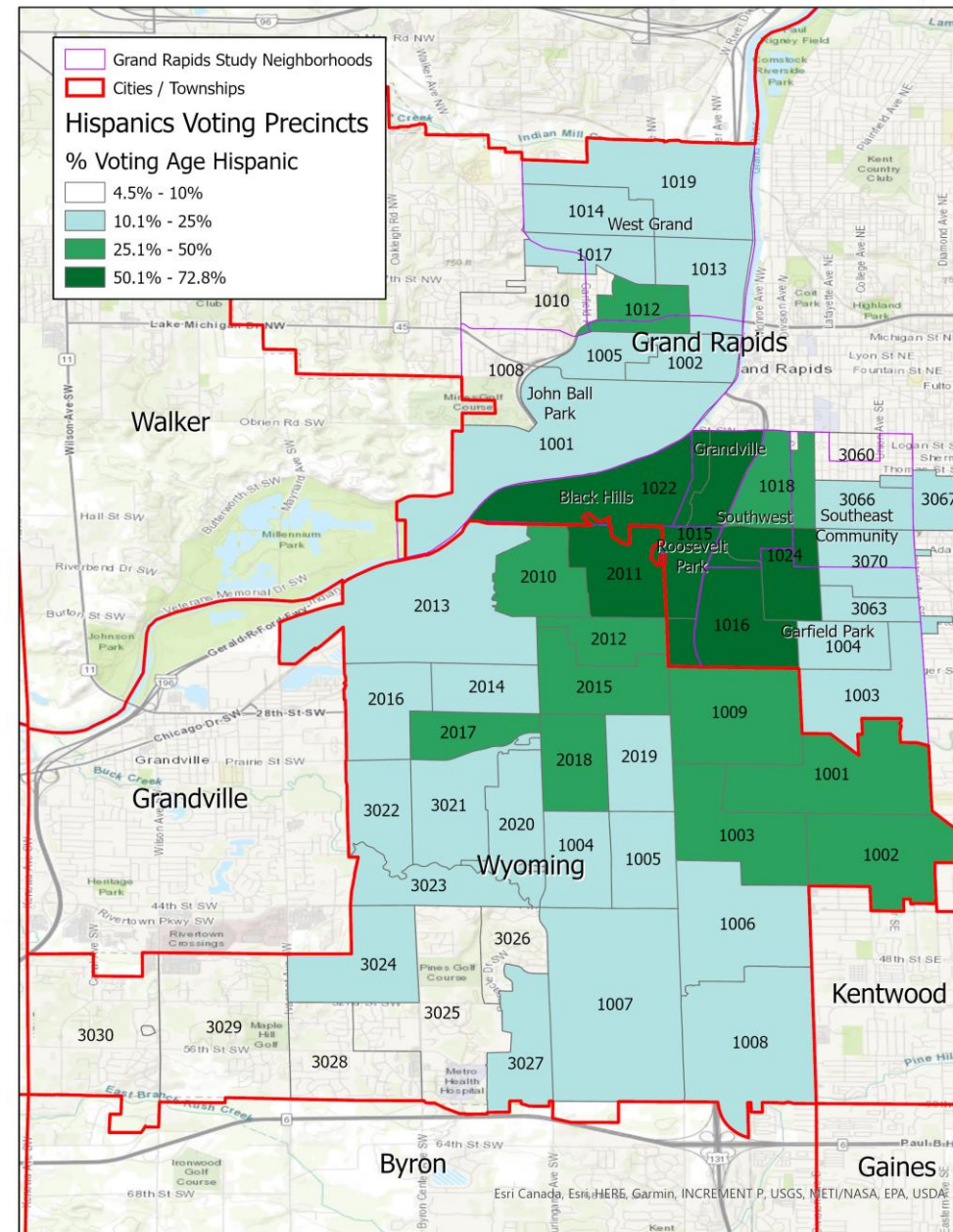
Areas included in Analysis of Voting Patterns - Hispanics (Detroit)



Detroit area			Estimates for Hispanics	
	Party	Race	ER	EI 2x2
2020 General				
U.S. President				
Joseph Biden	D	W	75.4	76.0
Donald Trump	R	W	24.3	23.9
others			0.3	0.2
<i>votes for office</i>			13.9	14.8
U.S. Senate				
Gary Peters	D	W	73.6	74.8
John James	R	W	22.6	21.9
others			3.8	3.2
<i>votes for office</i>			13.5	14.6
2018 General				
Governor				
Gretchen Whitmer	D	W	83.1	80.0
Bill Schuette	R	W	15.3	14.8
others			1.5	1.8
<i>votes for office</i>			3.5	5.1
Secretary of State				
Jocelyn Benson	D	W	84.0	82.6
Mary Treder Lang	R	W	14.4	13.5
others			1.7	14.0
<i>votes for office</i>			3.3	4.4
Attorney General				
Dana Nessel	D	W	80.1	78.9
Tom Leonard	R	W	16.4	15.2
others			3.4	3.7
<i>votes for office</i>			3.4	4.8
U.S. Senate				
Debbie Stabenow	D	W	82.5	82.2
John James	R	W	16.4	17.1
others			1.3	0.0
<i>votes for office</i>			3.3	4.5
2018 Democratic Primary				
Governor				
Abdul El-Sayed	D	ME	55.5	58.5
Shri Thanedar	D	A	13.6	12.7
Gretchen Whitmer	D	W	30.8	28.7
<i>votes for office</i>			-2.0	1.0

Hispanic voting patterns: Grand Rapids area

Areas included in Analysis of Voting Patterns - Hispanics in Grand Rapids

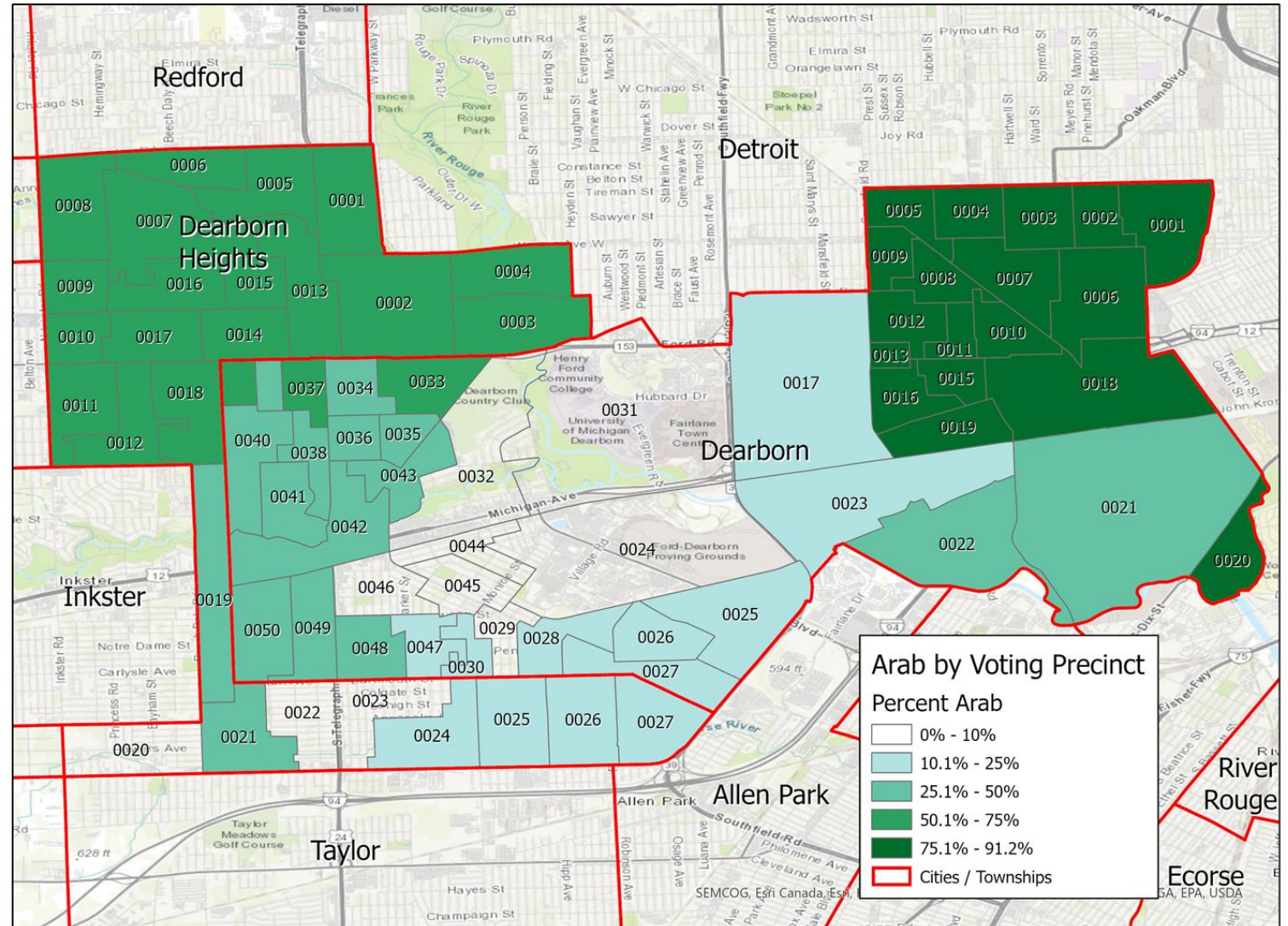


Grand Rapids area			Estimates for Hispanics	
	Party	Race	ER	EI 2x2
2020 General				
U.S. President				
Joseph Biden	D	W	98.6	94.8
Donald Trump	R	W	0.5	0.1
others			1.0	1.3
<i>votes for office</i>			0.0	8.6
U.S. Senate				
Gary Peters	D	W	96.1	93.3
John James	R	W	-1.6	3.2
others			5.3	9.2
<i>votes for office</i>			0.0	7.3
2018 General				
Governor				
Gretchen Whitmer	D	W	99.5	95.0
Bill Schuette	R	W	-4.5	1.6
others			5.6	6.1
<i>votes for office</i>			-9.0	1.1
Secretary of State				
Jocelyn Benson	D	W	102.1	97.0
Mary Treder Lang	R	W	-5.3	1.1
others			3.3	6.9
<i>votes for office</i>			-9.0	0.3
Attorney General				
Dana Nessel	D	W	97.2	93.1
Tom Leonard	R	W	-6.4	1.2
others			9.3	9.8
<i>votes for office</i>			-9.0	0.8
U.S. Senate				
Debbie Stabenow	D	W	97.2	93.2
John James	R	W	-3.4	2.0
others			6.2	10.4
<i>votes for office</i>			-9.0	1.1
2018 Democratic Primary				
Governor				
Abdul El-Sayed	D	ME	51.1	51.3
Shri Thanedar	D	A	39.8	42.4
Gretchen Whitmer	D	W	8.9	11.9
<i>votes for office</i>			-2.3	0.1

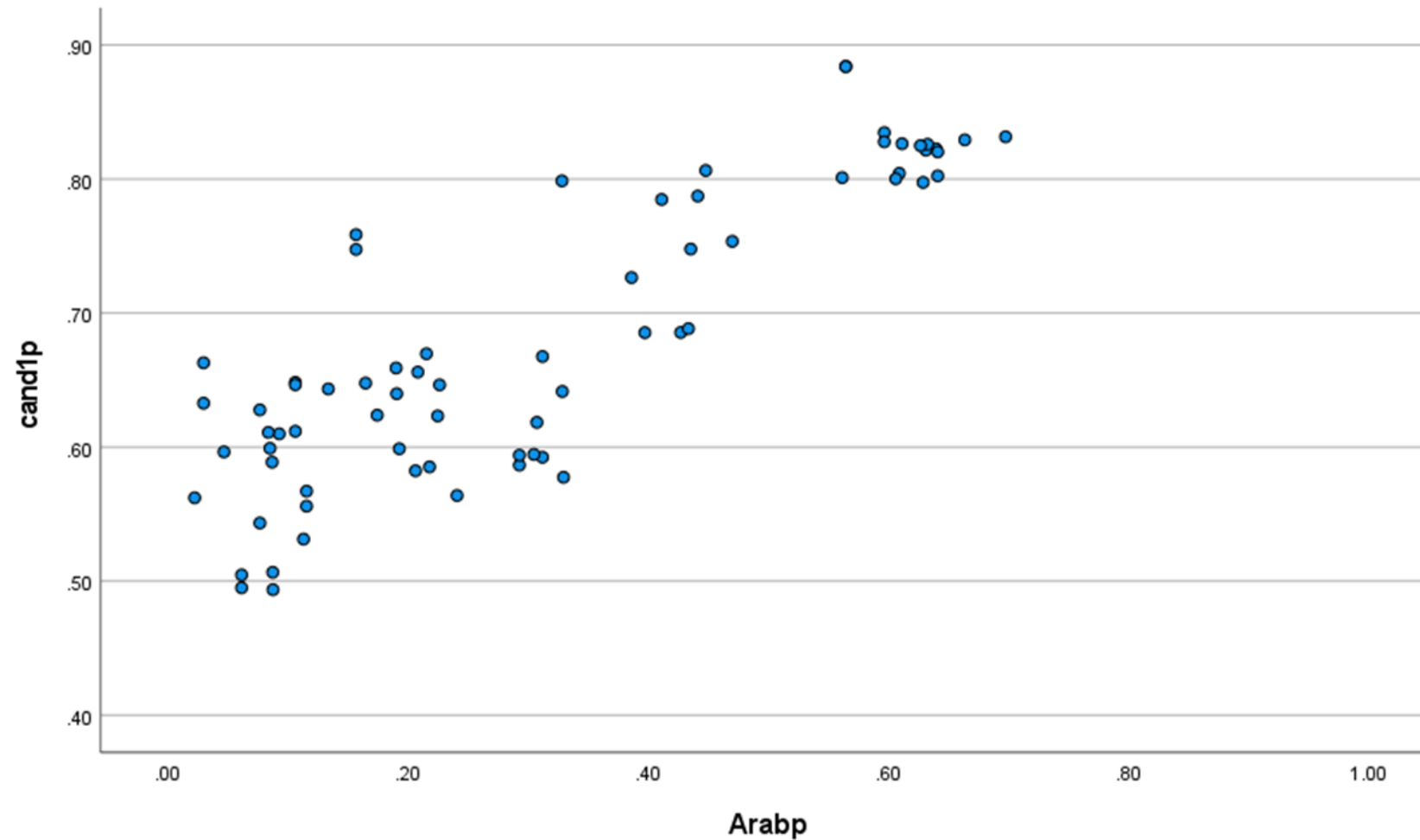
Arab American voting patterns

Areas included in Analysis of Voting Patterns - Arabs in Dearborn/Dearborn Heights

			Estimates for Arab Americans	
	Party	Race	ER	EI 2x2
2020 General				
U.S. President				
Joseph Biden	D	W	98.3	98.9
Donald Trump	R	W	1.3	0.8
others			0.6	1.0
<i>votes for office</i>			24.1	26.7
U.S. Senate				
Gary Peters	D	W	100.7	99.0
John James	R	W	-2.9	0.8
others			2.1	2.1
<i>votes for office</i>			22.2	24.9
2018 General				
Governor				
Gretchen Whitmer	D	W	103.9	99.3
Bill Schuette	R	W	-6.2	1.1
others			2.5	2.1
<i>votes for office</i>			8.6	10.3
Secretary of State				
Jocelyn Benson	D	W	104.7	99.3
Mary Treder Lang	R	W	-6.3	0.9
others			1.7	1.7
<i>votes for office</i>			8.5	9.8
Attorney General				
Dana Nessel	D	W	106.8	99.5
Tom Leonard	R	W	-8.0	0.6
others			1.3	1.3
<i>votes for office</i>			8.6	10.1
U.S. Senate				
Debbie Stabenow	D	W	107.2	99.1
John James	R	W	-9.0	1.1
others			1.9	1.9
<i>votes for office</i>			8.4	10.0
2018 Democratic Primary				
Governor				
Abdul El-Sayed	D	ME	116.4	92.8
Shri Thanedar	D	A	-0.3	0.2
Gretchen Whitmer	D	W	-16.0	0.6
<i>votes for office</i>			15.0	15.1

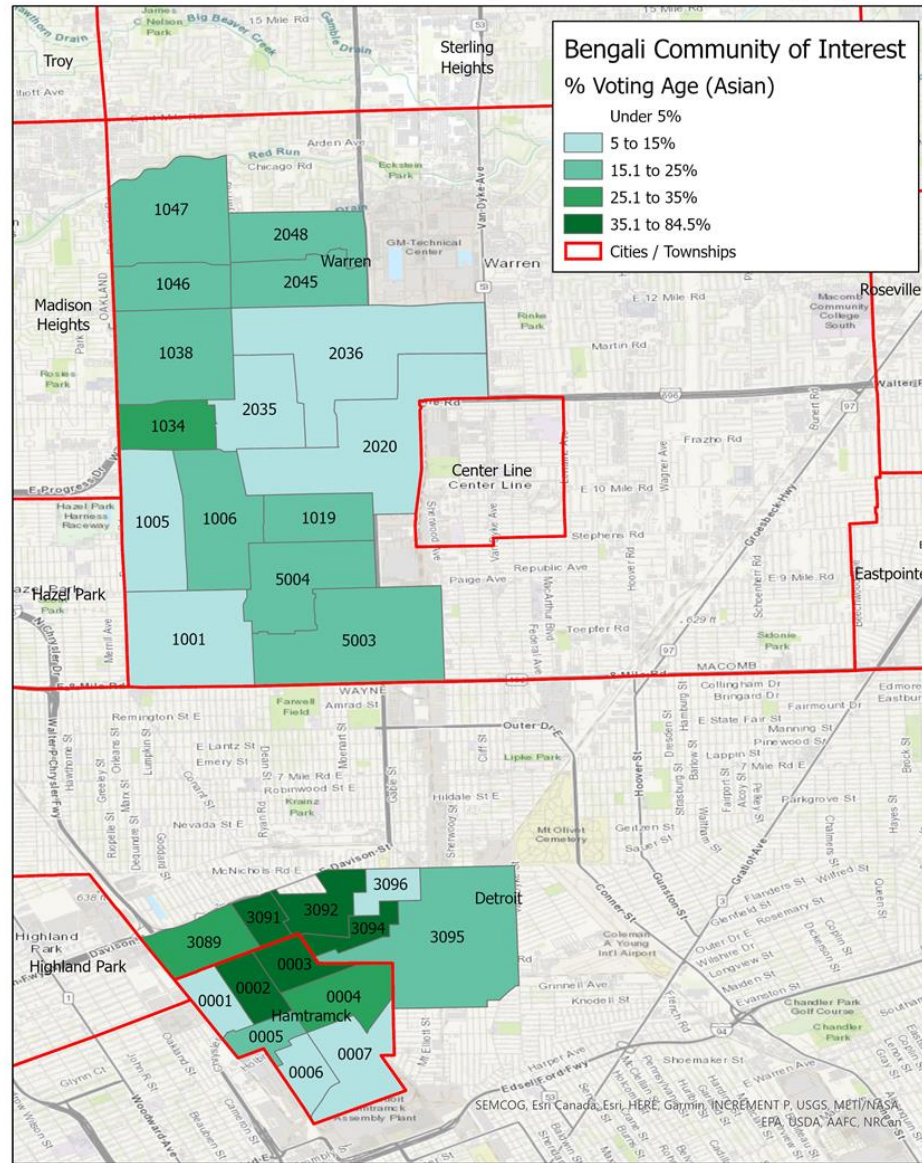


Scatterplot of proportion Arab American and proportion of votes for Biden in 2020



Bengali American voting patterns

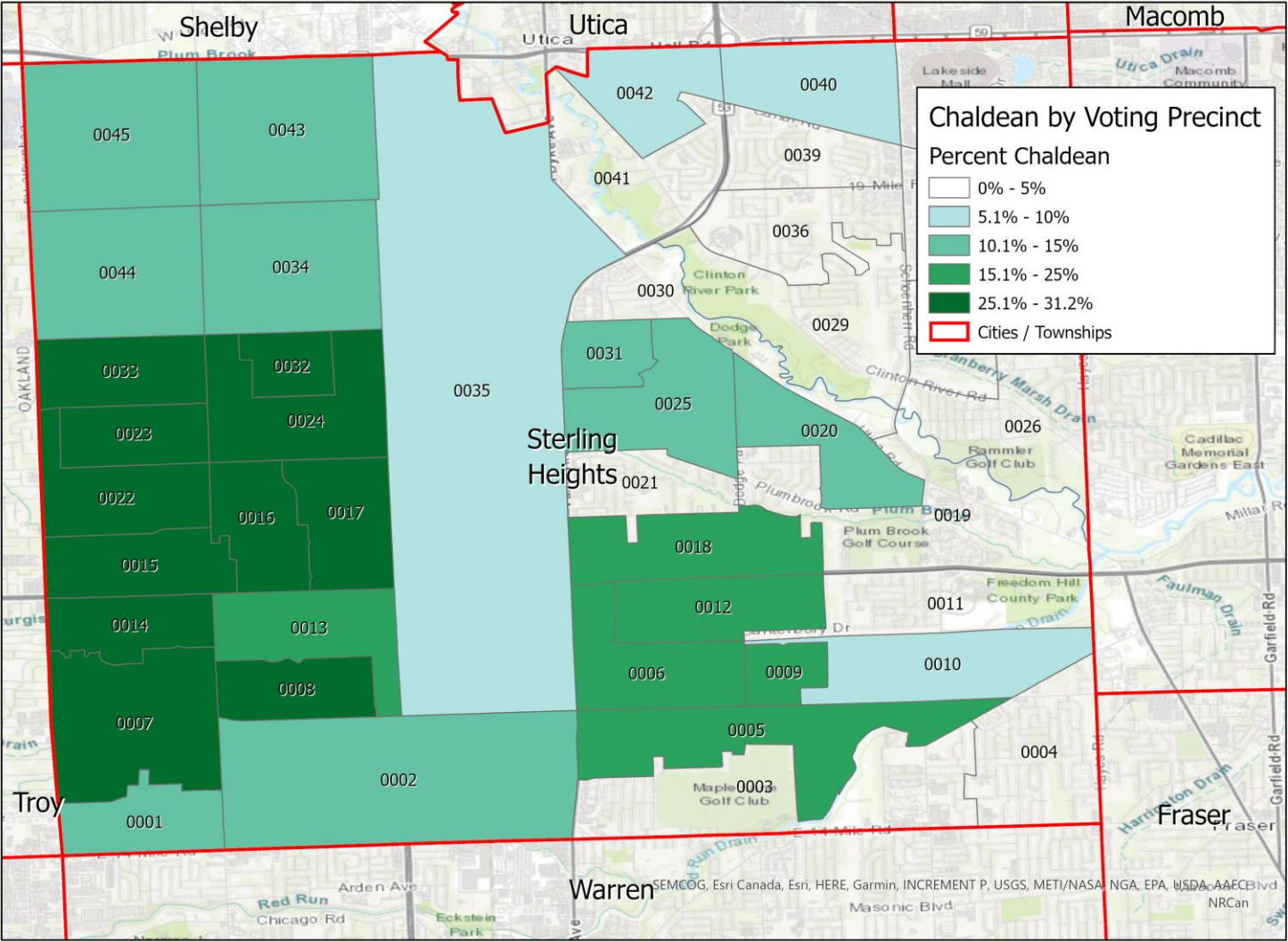
Areas included in Analysis of Voting Patterns - Bengali Language



Estimates for Bangladeshi Americans				
	Party	Race	ER	EI 2x2
2020 General				
U.S. President				
Joseph Biden	D	W	104.7	96.1
Donald Trump	R	W	-4.4	3.2
others			0.1	0.1
<i>votes for office</i>			31.6	25.2
U.S. Senate				
Gary Peters	D	W	104.4	96.2
John James	R	W	-5.2	3.3
others			0.9	1.1
<i>votes for office</i>			31.6	24.6
2018 General				
Governor				
Gretchen Whitmer	D	W	105.7	99.1
Bill Schuette	R	W	-7.4	1.1
others			1.1	1.1
<i>votes for office</i>			13.7	18.7
Secretary of State				
Jocelyn Benson	D	W	105.7	98.9
Mary Treder Lang	R	W	-7.1	1.3
others			2.5	2.4
<i>votes for office</i>			13.9	19.3
Attorney General				
Dana Nessel	D	W	107.5	98.2
Tom Leonard	R	W	-8.0	0.7
others			2.3	2.3
<i>votes for office</i>			13.8	19.2
U.S. Senate				
Debbie Stabenow	D	W	107.1	99.1
John James	R	W	-7.7	0.9
others			1.7	0.7
<i>votes for office</i>			13.9	18.4
2018 Democratic Primary				
Governor				
Abdul El-Sayed	D	ME	98.8	97.3
Shri Thanedar	D	A	6.5	5.1
Gretchen Whitmer	D	W	-5.2	4.5
<i>votes for office</i>			16.4	14.7

Chaldean voting patterns

Areas included in Analysis of Voting Patterns - Chaldeans in Sterling Heights



			Estimates for Chaldeans	
	Party	Race	ER	EI 2x2
2020 General				
U.S. President				
Joseph Biden	D	W	19.5	20.5
Donald Trump	R	W	81.9	80.3
others			-0.8	2.0
<i>votes for office</i>			31.2	29.6
U.S. Senate				
Gary Peters	D	W	26.3	26.2
John James	R	W	74.0	72.8
others			-0.6	0.2
<i>votes for office</i>			27.9	27.2
2018 General				
Governor				
Gretchen Whitmer	D	W	52.9	48.9
Bill Schuette	R	W	47.9	47.4
others			0.2	8.0
<i>votes for office</i>			-12.2	0.0
Secretary of State				
Jocelyn Benson	D	W	55.3	53.7
Mary Truder Lang	R	W	44.7	42.0
others			0.4	7.9
<i>votes for office</i>			-10.8	0.3
Attorney General				
Dana Nessel	D	W	52.5	48.0
Tom Leonard	R	W	47.4	47.4
others			0.4	0.1
<i>votes for office</i>			-10.3	2.5
U.S. Senate				
Debbie Stabenow	D	W	55.2	55.6
John James	R	W	43.2	44.0
others			0.7	0.9
<i>votes for office</i>			-11.4	0.4
2018 Democratic Primary				
Governor				
Abdul El-Sayed	D	ME	50.1	na
Shri Thanedar	D	A	11.2	na
Gretchen Whitmer	D	W	38.7	na
<i>votes for office</i>			-1.1	0.1

Scatterplot of proportion Chadlean and proportion of votes for Biden in 2020

