

# MICRC Mapping Process and Considerations

v8.17

## TABLE OF CONTENTS

Key Terms and Definitions.....	2
Constitutional Mapping Criteria.....	3
District Details.....	3
Mapping Schedule.....	4
Draft Proposed Map Session Process.....	6
Deliberations of Draft Proposed Maps for Public Hearings.....	10
Public Hearings and Debriefings.....	12
Deliberations of Proposed Maps for 45-Day Public Comment Period.....	14
Adoption of Final Maps.....	16

## Appendix

Process Flow Chart.....	17
Communities of Interest & Public Comment Process Considerations.....	21
Mapping Software Guidelines Regarding a Quorum.....	23
Map of Regions.....	24
Consensus Decision-Making.....	25
Getting to Yes Summary. ....	27
Significant Line Drawing Decisions.....	30

## Key Terms and Definitions

**Communities of Interest (COI):** “Communities of interest may include, but shall not be limited to, populations that share cultural or historical characteristics or economic interests. Communities of interest do not include relationships with political parties, incumbents, or political candidates.”

**Proposed COI:** All COI submissions presented from the public to the Commission for consideration.

**Final COI:** COI submissions reviewed and incorporated by the Commission into district maps.

**Racially Polarized Voting (RPV):** In states with significant minority populations, a Racially Polarized Voting analysis should be conducted to ensure proposed redistricting plans do not fragment, submerge, or unnecessarily pack a geographically concentrated minority population in violation of Section 2 of the VRA (illegal vote dilution).

**Voting Rights Act (VRA):** The Voting Rights Act of 1965 aimed to overcome legal barriers at the state and local levels that prevented historically marginalized groups from exercising their right to vote as guaranteed under the 15th Amendment to the U.S. Constitution. It applies to redistricting to prevent states and localities from drawing districts that deny underrepresented minority groups a chance to elect a candidate of their choice. Protected groups, by federal law, include African Americans, Hispanic, Native American and Alaskan Natives. All district maps must comply with the Voting Rights Act. Protected groups may also encompass minority language and national origin.

**District Maps:** Maps of individual electoral districts that, when assembled, comprise a complete Redistricting Plan for each of the types of districts the MICRC is required to draw state Senate (38 districts), state House (110 districts), and U.S. Congressional (13 districts).

**Draft Maps: (August 20 – September 30)** Initial maps drafted by the Commission prior to public hearings.

**Alternate Draft: (August 20 – September 30)** A draft map put forth for consideration by an individual Commissioner during the draft map period.

**Draft Proposed Maps: (Aug 20 – Nov 5)** Maps approved for display and feedback during the Public Hearings.

**Proposed Maps: (Nov 5 – Dec 30)** Maps that have been approved and published to begin the 45-day public comment period. These maps will be voted on for final approval after the 45-day period ends. Any changes to Proposed Maps would require publication and initiate another 45-day public comment period.

**Final Maps: (Dec 30)** Maps that are approved by a final vote with at least two Commissioners from each affiliation and become law 60 days after publication.

## CONSTITUTIONAL MAPPING CRITERIA (IN RANK ORDER)

1. Districts shall be of equal population as mandated by the United States constitution, and shall comply with the voting rights act and other federal laws.
2. Districts shall be geographically contiguous. Island areas are considered to be contiguous by land to the county of which they are a part.
3. Districts shall reflect the state's diverse population and communities of interest. Communities of interest may include, but shall not be limited to, populations that share cultural or historical characteristics or economic interests. Communities of interest do not include relationships with political parties, incumbents, or political candidates.
4. Districts shall not provide a disproportionate advantage to any political party. A disproportionate advantage to a political party shall be determined using accepted measures of partisan fairness.
5. Districts shall not favor or disfavor an incumbent elected official or a candidate.
6. Districts shall reflect consideration of county, city, and township boundaries.
7. Districts shall be reasonably compact.

## DISTRICT DETAILS

District Type	District Count	Ideal District Size	District Size w/ Deviations
*State Senate	38 districts	265,193 people	251,933 - 278,453 people (-5.0% to 5.0% deviation)
*State House	110 districts	91,612 people	87,031 - 96,193 people (-5.0% to 5.0%)
Congressional	13 districts	775,179 people	717,303 - 779,055 people (-0.5% to 0.5% deviation)

\*District Count Set by Michigan Constitution

## MICRC MAPPING SCHEDULE

(Locations in all caps indicate travel meetings)

### Draft Maps

Date	District Type	Region of Mapping
Friday, August 20	State Senate	Southeast and South Central
Monday, August 23	State House	Southeast
Tuesday, August 24	State House	South Central
Thursday, August 26 – TRAVERSE CITY	State Senate	Upper Peninsula, Northeast, & Northwest
Monday, August 30	State House	Upper Peninsula, Northeast, & Northwest
Tuesday, August 31	Congressional	Upper Peninsula, Northeast, & Northwest
Wednesday, September 1	Congressional	Southeast and South Central
Thursday, September 2 – ANN ARBOR *RPV and VRA Presentation*	State Senate	Detroit Metro
Tuesday, September 7	State House	Southwest
Wednesday September 8	State Senate	Southwest
Thursday, September 9 - BIG RAPIDS	State House	West
Monday, September 13	State Senate	West
Tuesday, September 14	State Senate	East, East Central
Wednesday September 15	Congressional	East, East Central
Thursday, September 16 – ALLENDALE *Chair and Vice-Chair reconsideration*	Congressional	Southwest & West
Monday, September 20	State House	East, East Central
Tuesday, September 21	State House	Detroit Metro
Wednesday, September 22 *Final date of Draft Proposed mapping*	Congressional	Detroit Metro

### Deliberation

Thursday, September 23 – MT. PLEASANT

Friday, September 24 -

Monday September 27 -

Tuesday September 28 -

Wednesday September 29 -

Thursday, September 30 – ROCHESTER HILLS - **Vote for Draft Proposed maps**

Friday, October 1 – tentative hold

September 30 – October 8 - EDS to develop maps, data and legal plan for publishing of Draft Proposed Maps.

### Draft Proposed Maps Publication

October 8 - Publish Draft Proposed Maps for public viewing, comment and public hearing

### Public Hearings

Monday, October 11 - Northern Michigan University, Marquette

Wednesday, October 13 - Treetop Resorts, Gaylord

Thursday, October 14 - The Dort Center, Flint

Monday, October 18 - DeVos Place, Grand Rapids

Wednesday - Oct 20, Radisson Plaza Conference and Hotel, Kalamazoo

Thursday, October 21 - Lansing Center, Lansing

Monday, October 25 – MRCC Banquet and Convention Center, Warren

Wednesday, October 27 – Suburban Collection Showplace, Novi

Thursday, October 28 – TCF Center, Detroit

**Note:** If Public Hearings begin in the afternoon, Commission meetings can be held in the morning of public hearing days to review the previous public hearing. For example, the Commission would hold its debrief for the Marquette Public Hearing on Wednesday morning, October 13 in Gaylord.

### **Regular Meetings Resume**

Deliberations - Friday, October 29—Cadillac Place

Monday-Friday, November 1-5

Friday, November 5 – **Vote on proposed maps**

November 6 -13 - EDS produces maps, data, and legal descriptions

Sunday, November 14 – Maps, legal descriptions, and documentation through census data published; **45-day public comment period begins.**

Special meetings may be scheduled during the 45-day public comment period as needed.

December 29- Final day of public comment period

December 30 – First day Commission may vote on adoption of final maps (46th day after maps published)

- Either by majority vote with votes to adopt from at least 2 commissioners from each affiliation pool, or the alternative procedure if no plan satisfies those requirements, as outlined in the Constitution.

January 3 – January 31, 2022 – Draft Commission Report

February 2, 2022 – Commission report due

March 3, 2022 – **Maps become law**

April 19, 2022 – Deadline for candidate filings and the deadline for Bureau of Elections (BOE) update to Qualified Voter File (QVF).

## Draft Proposed Map Session Process (August 20<sup>th</sup> – October 8<sup>th</sup>)

### PRIOR TO SCHEDULED MAPPING SESSION

1. **Research and Review:** Commissioners to review, research and take notes on public comment regarding the scheduled mapping region.
  - a. **Considerations for preparation:**
    - i. Review the constitutional ranked criteria for redistricting.
    - ii. COIs from public comment (see COI considerations document on page 22 for types of public comment, where to locate and additional considerations).
    - iii. Review any ACS data, ESRI data, etc.
      1. Are there any additional COIs that should be considered not mentioned in public comment?
    - iv. Familiarize yourself w/ landmarks, regional boundaries, geographic or topographic details (some may be overlap with COI commentary).
      1. County, city, town, township boundaries, school district boundaries etc.
      2. Rivers, water-basins, parks, or conservation areas.
      3. Economic zones (airports, power plants, manufacturing, hospitality etc.)
2. **(OPTIONAL) Draft Maps:** Commissioners may draft maps individually for sharing during the public mapping meeting. Individual maps are not required from Commissioners. Consensus is encouraged and collaborative mapping among the entire Commission during a public meeting is **required**.
  - a. To maintain public transparency and trust, Commissioners **should not** share individually drafted district maps with other Commissioners, or collaboratively draft district maps prior to the public meeting. The Commission is constitutionally required to draw district maps during public meetings.
  - b. Commissioners who have produced individual maps they intend to share with the Commission should notify Commission staff, EDS and the Secretary at least one day prior to the scheduled mapping session for that region or area so that it may be incorporated into data layer and publicly posted.

### DRAFT MAPPING SESSION

The below work process outlines draft mapping session procedure for the time-period of August 20<sup>th</sup> through October 8. During this time-period, Commissioners are working to create multiple draft map options and will review the options to decide by majority vote which draft maps to publish prior to the second round of public hearings.

Due to the delayed receipt of Census data, Racially Polarized Voting (RPV) analysis and corresponding Voting Rights Act (VRA) analysis is expected after the Commission has begun mapping. The Mapping Schedule reflected on page 5 has been structured in recognition of this delay. All draft districts shall be reviewed and re-visited when this information becomes available for assessment and adjustment of district lines in compliance with federal law, as needed.

1. **Announce Region:** Commission Chairperson to announce the region and district type being discussed at the mapping session for the public record.
  - a. EDS to open and display mapping software and show the region being discussed, with COI overlay.

- b. Chairperson to repeat the announcement after resuming from breaks.

**Note:** Regional lines serve as guidelines and the Commission is not required to map strictly within regional lines. A draft district may extend across regional lines.

2. **Review of Proposed COIs:** Commissioners to discuss Proposed Communities of Interest and review diverse populations within the region or overlapping the region to arrive at Final COIs for inclusion (see COI considerations document on page 22 for steps).

- a. Commission may vote by majority if consensus cannot be reached to arrive at each designated Final COI, including each COI boundary.
    - i. Each Final COI will follow the naming convention of “F##### - [region] [brief description]”.
      1. The “F#####” in the naming convention will reflect the ID number of the COI submission designated as a Final COI, or if the Final COI is a combination of multiple COI submissions, a new number will be generated beginning with “F” and a five digit number reflecting the sequential order of creation. For example, the first Final COI created may be named F00001.
  - b. Once all COIs within a region are agreed upon by the Commission, the COIs are considered “Final COIs” and all draft maps must reflect identical, agreed upon COI boundaries, unless modified by majority vote of the Commission.

3. **COI Consultation with RPV and VRA Consultants:** Request input from RPV consultant and VRA legal counsel on COI boundaries, things of note and items to consider when line drawing. Commission may make modifications as needed based on consultant feedback.

- a. **Record Keeping:** All major decisions and rationale catalogued by MICRC staff and MDOS and entered into repository.

4. **Individual Presentations:** Commissioners who have drawn individual maps within the scheduled region may present to the full Commission at this time (all individual maps must be submitted to staff and EDS at least one day prior, per section 2b of the “PRIOR TO SCHEDULED MAPPING SESSION” section of this document).

- a. Commissioners will present individual maps based on order of notification.

- b. The Commission may discuss maps as they are presented. Chairperson and Vice-Chairperson will facilitate discussion.
    - i. **Considerations for Discussion:**
      - 1. Ranked criteria compliance
      - 2. Proposed line's interaction with COIs (does it split any COI boundaries?)
      - 3. Input from RPV and VRA counsel
  - c. EDS will produce a data overlays including any individual Commissioner submitted maps by district prior to the scheduled mapping session.
5. **Collaborative Line Drawing Session:** The Commission will choose an area of the region to begin collectively drawing district lines.
- a. **Considerations of where to begin and proceed drawing within the region:**
    - i. Densely populated areas vs less densely populated areas
    - ii. Communities of interest locations
    - iii. Barriers (shoreline, Stateline)
  - b. **Collaborative Mapping:**
    - i. A Commissioner, selected in alphabetical order (following roll-call vote procedure) will begin the drawing of a district in the scheduled region.
    - ii. That Commissioner may elect to choose one of the pre-created district maps presented by individual commissioners as a starting point.
    - iii. Chairperson/Vice-Chairperson facilitates the discussion between Commissioners regarding placement or adjustment of proposed lines. Chairperson/ Vice-Chairperson instructs EDS to make proposed adjustments based on the discussion of the full Commission.
      - 1. **Considerations when drawing or adjusting lines:**
        - a. Rank criteria from the constitution
        - b. Input from RPV, VRA and Line Drawing Consultants
        - c. Proposed line's interaction with COIs (does it split any COI boundaries?)
        - d. After the initial district line is drawn, subsequent district line drawing may require the Commission to adjust or reconsider lines in previously completed districts.
    - iv. Commissioners that hold strongly divergent views to the collaborative draft map product may create an Alternative Draft (see below, section 5c for more).
      - 1. Commissioners must provide an explanation for the reasoning of drafting Alternative Maps for the record and repository.
  - c. **Alternate Drafts:** An Alternate Draft of a single district, grouping of districts or region may be produced at the request of any Commissioner for consideration by the full body during deliberations on Draft Proposed Maps (taking place on October 8<sup>th</sup>).



- i. During the collaborative mapping process, any Commissioner may indicate they would like to create an Alternate Draft. Commissioners may create an Alternate Draft in one of two ways.
      1. Request EDS to draw the Alternate Draft during the public meeting.
        - a. After the Commission finalizes that single district, upon recognition by the Chairperson or Vice-Chairperson, the individual who requested an Alternate Map may direct EDS on how to draw their Alternative Draft of the district. Drawing of the Alternate Draft maps will not occur simultaneously with the collaborative mapping but will take place after the previous map's draft district is completed.
        - b. If more than one Commissioner requests to create an Alternate Draft for that district, a que will form in the order of request.
      2. Individual Commissioners may choose to draw their Alternative Draft map independently after the public meeting using the mapping software, and submit the Alternate Draft to EDS, MICRC Staff and the Secretary for public posting.
        - a. Commissioners submitting a map in this fashion may present their map to the Commission at the subsequent meeting as an Unfinished Business agenda item.
  - d. **Follow the process as outlined in 5b through 5c until all districts in the scheduled region are completed to the Commission's satisfaction.** The Commission will have compiled Draft Maps and Alternate Draft Maps for formal consideration during its deliberations.
  - e. **Record Keeping:** Explanation and rationale will be catalogued by MICRC staff and MDOS and entered into repository.
6. **Consultation with RPV and VRA on Districts and Regions:** Request input from Racial Polarized Voting analyst and Voting Rights Act legal counsel on district boundaries, things of note and items to adjust. Commission may make modifications as needed based on feedback.

## Deliberations of Draft Proposed Maps for Public Hearings (September 23<sup>rd</sup> – September 30<sup>th</sup>)

### PRIOR TO DELIBERATION SESSIONS

1. **Research and Review:** Commissioners to independently review, research and take notes on:
  - a. Collaborative maps produced by the Commission and Alternative Maps submitted by individual Commissioners for consideration.
  - b. Additional public comment received during the Draft Map drawing sessions.
2. **Additional Alternative Maps:** Commissioners who produce additional Alternative Maps for consideration should notify Commission staff, EDS and the Secretary at least one day prior to the scheduled deliberation session.
  - a. Any Commissioner wishing to withdraw their Alternative Maps from consideration may also do so at this time by notifying Commission Staff, EDS and the Secretary.

### DELIBERATION SESSIONS

1. **Map Adjustments:** Using the collaborative mapping format, the Commission may adjust draft maps based on updated public comment and additional analysis from consultants. Alternative maps may also be adjusted and submitted as described in section 2 above.
  - a. **Record Keeping:** All major decisions, including explanation and rationale, will be catalogued by MICRC staff and MDOS and entered into repository.
2. **Determine Number of Draft Proposed Maps:** Commission to deliberate and determine the number of complete redistricting maps, for State House, State Senate and Congressional, that should be displayed for public comment during the second round of public hearings.  
*(Recommendation: No more than three draft proposed per each type of district)*
3. **Review Draft Maps:** Commissioners to review all collaborative maps produced by the Commission and Alternative Maps submitted by individual Commissioners for consideration.
  - a. The Commission may discuss maps as they are presented. Chairperson and Vice-Chairperson will facilitate discussion and present collaborative maps.
    - i. Discussion order of maps by type of district will be by order of mapping schedule (first State Senate maps, proceeding to State House maps, and finally Congressional maps)
    - ii. Discussion order within each district type is outlined as follows:
      1. Collaborative Maps, presented by Chairperson or Vice-Chairperson.
      2. Alternative Maps, based on order of submission. The creator of the alternative map may present their map to the Commission.
        - a. Any Commissioner wishing to withdraw their Alternative Map(s) from consideration may also do so at this time.

- b. Commissioners may take personal notes at this time on preference of maps, for reference during the subsequent voting sessions.  
**Note:** All personal notes are public records and may be subject to FOIA.
- **Voting:** Commissioners will choose their most preferred maps by vote for each draft map up for consideration.
  - a. **Round I Voting:** The number of preferred maps selected by each Commissioner will be equivalent to two more than the agreed upon Proposed Draft Maps number. For example, if the agreed upon proposed draft maps number is three, Commissioners must vote for their five most preferred maps.
    - i. The number of votes for each plan will be tallied by the Secretary, and the Draft Maps for each type of district with the greatest number of votes will move on to Round II of voting. For each type of district, the number of finalists will be equal to the agreed upon Proposed Draft Maps number plus two.
    - ii. Ties may be resolved through additional rounds of voting, if needed.
  - b. **Round II Voting:** Commissioners will choose their most preferred maps by vote for each draft map up for consideration. The number of preferred maps selected by each Commissioner will be equal to the agreed upon Proposed Draft Maps number. For example, if the agreed upon proposed draft maps number is three, Commissioners must vote for their three most preferred draft maps.
    - i. The number of votes for each plan will be tallied by the Secretary. The draft maps receiving the greatest number of votes will be designated as the Draft Proposed Maps to be displayed for public consideration during the second round of public hearings.

## Public Hearings and Debriefings (October 11<sup>th</sup> – October 28<sup>th</sup>)

### Public Hearings

Monday, October 11 - Northern Michigan University, Marquette

Wednesday, October 13 - Treetop Resorts, Gaylord

Thursday, October 14 - The Dort Center, Flint

Monday, October 18 - DeVos Place, Grand Rapids

Wednesday, Oct 20 - Radisson Plaza Conference and Hotel, Kalamazoo

Thursday, October 21 - Lansing Center, Lansing

Monday, October 25 – MRCC Banquet and Convention Center, Warren

Wednesday, October 27 – Suburban Collection Showplace, Novi

Thursday, October 28 – TCF Center, Detroit

### PUBLIC HEARINGS

1. **Research and Review:** Prior to each public hearing, Commissioners shall independently review each Draft Proposed Map's districts for the public hearing area.
2. **Listen and Note:** During each public hearing, Commissioners shall participate in active listening, take notes as needed, and consider feedback from the public.  
**Note:** All personal notes are public records and may be subject to FOIA.
3. **Public Comment Map Display:** Public comment participants wishing to share their map located in the Public Comment Portal with the Commission during their two-minute public comment must indicate the Map ID number on their public comment sign-up card. The Map ID number will be provided to EDS to display their map during the participant's public comment. Following their public comment, the Commission may ask follow-up questions as needed.
  - a. Members of the public may only provide one Map ID number and present on one map during their two minutes of public comment. All comments on additional maps may be provided in writing through the Commission's Public Comment Portal.
4. **Follow-up Questions:** Concluding a public comment participant's two-minute allotment, a Commissioner may ask follow-up or clarifying questions to the participant during the public meeting.
  - a. Questions may only be asked through the Chairperson or Vice-Chairperson if additional information retrieved from the public comment participant would assist the Commission in determining or refining boundaries of a Communities of Interest or mapping boundaries. Commissioners will refrain from making remarks or engaging in discussion in the public forum to dispute or contest a public comment participant's statement.
    - i. The Chairperson or Vice-Chairperson may declare a Commissioner's follow-up question or remark to be non-germane and decline to ask the question.

- b. Any follow-up question to a member of the public may only occur during the public hearing or public meeting and **may not** occur during breaks or outside of a MICRC public meeting or hearing.
  - i. If a member of the public approaches a Commissioner to provide follow-up information during a break or outside of an MICRC public meeting or hearing, the Commissioner must immediately dis-engage from the conversation.

## DEBRIEFING SESSIONS

On the date of the subsequent public hearing, the Commission will hold a public meeting for the purpose of conducting a debriefing session on feedback received during the previous public hearing.

1. **Research and Review:** Prior to each debriefing session, Commissioners shall independently review each Draft Proposed Map and public comment provided during the previous public hearing.
2. **Discussion:** Commissioners will review and discuss substantive feedback and themes received during the previous public hearing.
  - a. **Considerations for debriefing discussion:**
    - i. Suggested changes to COI boundaries
    - ii. Additional COIs for consideration
    - iii. Suggested changes to draft proposed maps for each type
    - iv. Input from RPV, VRA and Line Drawing Consultants
  - b. No map or COI changes or adjustments will occur during public hearings or debriefing sessions. Commissioners will note or log suggested mapping edits. Noted changes will take place during post-hearing deliberations (Oct. 29 – Nov 5).

## Deliberations of Proposed Maps for 45-Day Public Comment Period (October 29<sup>th</sup> – November 5<sup>th</sup>)

### DELIBERATIONS

1. **Determine Number of Proposed Maps:** Commission to deliberate and determine the number of proposed maps, for each district type, that should be posted for public comment during the 45-day public comment period to be considered as final maps (one for each district type) after the 45-day period expires. (**Recommendation:** *No more than two proposed maps per district type*)
2. **Review of Draft Proposed Maps:** Commissioners to review all Draft Proposed Maps.
  - a. The Commission may discuss maps as they are presented. Chairperson and Vice-Chairperson will facilitate discussion and present collaborative maps.
    - i. Discussion order of maps by district type will be by order of mapping schedule (First State Senate maps, proceeding to State House maps, and finally Congressional maps)
  - b. Commissioners may take personal notes at this time on preference of maps, for reference during the subsequent voting session.

**Note:** All personal notes are public records and may be subject to FOIA.
3. **Vote on Maps Advancing to Deliberations:** Commissioners will choose their most preferred maps to advance to deliberations out of the Draft Proposed Maps.
  - i. Commissioners will choose their most preferred maps by vote for each Draft Proposed Map. The number of preferred maps selected by each Commissioner will be equal to the agreed upon Proposed Maps number. For example, if the agreed upon Proposed Maps number is two, Commissioners must vote for their two most preferred Proposed Draft Maps.
    1. The number of votes for each plan will be tallied by the Secretary. The Draft Proposed Maps receiving the greatest number of votes will proceed for further deliberations and adjustments.
4. **Review of Final COIs:** Commissioners to discuss Final Communities of Interest and review diverse populations within each region to make any additional adjustments (see COI considerations document on page 22 for steps).
  - a. Commission may vote by majority if consensus cannot be reached on COI adjustments or additions.
  - b. Once all COIs within a region are agreed upon by the Commission, all maps must reflect identical, agreed upon COI boundaries, unless modified by majority vote of the Commission.
5. **Draft Proposed Map Adjustments:** Commission Chairperson or Vice-Chairperson to announce the map name, district type and region being discussed at the mapping session for the public record.
  - a. EDS to open and display mapping software and show the region being discussed, with COI overlays.
  - b. Chairperson or Vice-Chairperson to repeat the announcement after resuming from breaks.
  - c. **Collaborative Mapping:**

- i. For each region, Commissioners will be called upon in rotating alphabetical order to make proposed adjustments and must provide explanation of proposed adjustments for the record. If a Commissioner has no suggested adjustments, they may pass to the next Commissioner.
  - ii. Chairperson/Vice-Chairperson facilitates the discussion between Commissioners regarding placement or adjustment of districts. Chairperson/ Vice-Chairperson instructs EDS to make proposed adjustments based on the discussion of the full Commission.
  - iii. Commission will deliberate the suggested district adjustment and may vote by majority if consensus cannot be reached on modifications.
    1. **Considerations when drawing or adjusting lines:**
      - a. Rank criteria from the constitution
      - b. Input from RPV, VRA and Line Drawing Consultants
      - c. District's interaction with COIs (does it split any COI boundaries?)
      - d. After the initial district is drawn, subsequent district line modifications may require the Commission to adjust or reconsider lines in previously completed districts.
    - d. **Record Keeping:** All major decisions and rationale catalogued by MICRC staff and MDOS and entered in the repository.
6. **Vote on Proposed Maps:** The Commission, by majority vote conducted by roll call, will approve the Draft Proposed Map(s) for publishing and initiation of the 45-day public comment period. Once approved by majority vote of the Commission, Draft Proposed Maps will be known as Proposed Maps.

## **Adoption of Final Maps (December 30<sup>th</sup>)**

Pursuant to subsection 14 of the Constitution, the following procedure shall be used to adopt final maps for each type of district.

**(14) The commission shall follow the following procedure in adopting a plan:**

(a) Before voting to adopt a plan, the commission shall ensure that the plan is tested, using appropriate technology, for compliance with the criteria described above.

(b) Before voting to adopt a plan, the commission shall provide public notice of each plan that will be voted on and provide at least 45 days for public comment on the proposed plan or plans. Each plan that will be voted on shall include such census data as is necessary to accurately describe the plan and verify the population of each district and shall include the map and legal description required in part (9) of this section.

(c) A final decision of the commission to adopt a redistricting plan requires a majority vote of the commission, including at least two commissioners who affiliate with each major party, and at least two commissioners who do not affiliate with either major party. If no plan satisfies this requirement for a type of district, the commission shall use the following procedure to adopt a plan for that type of district:

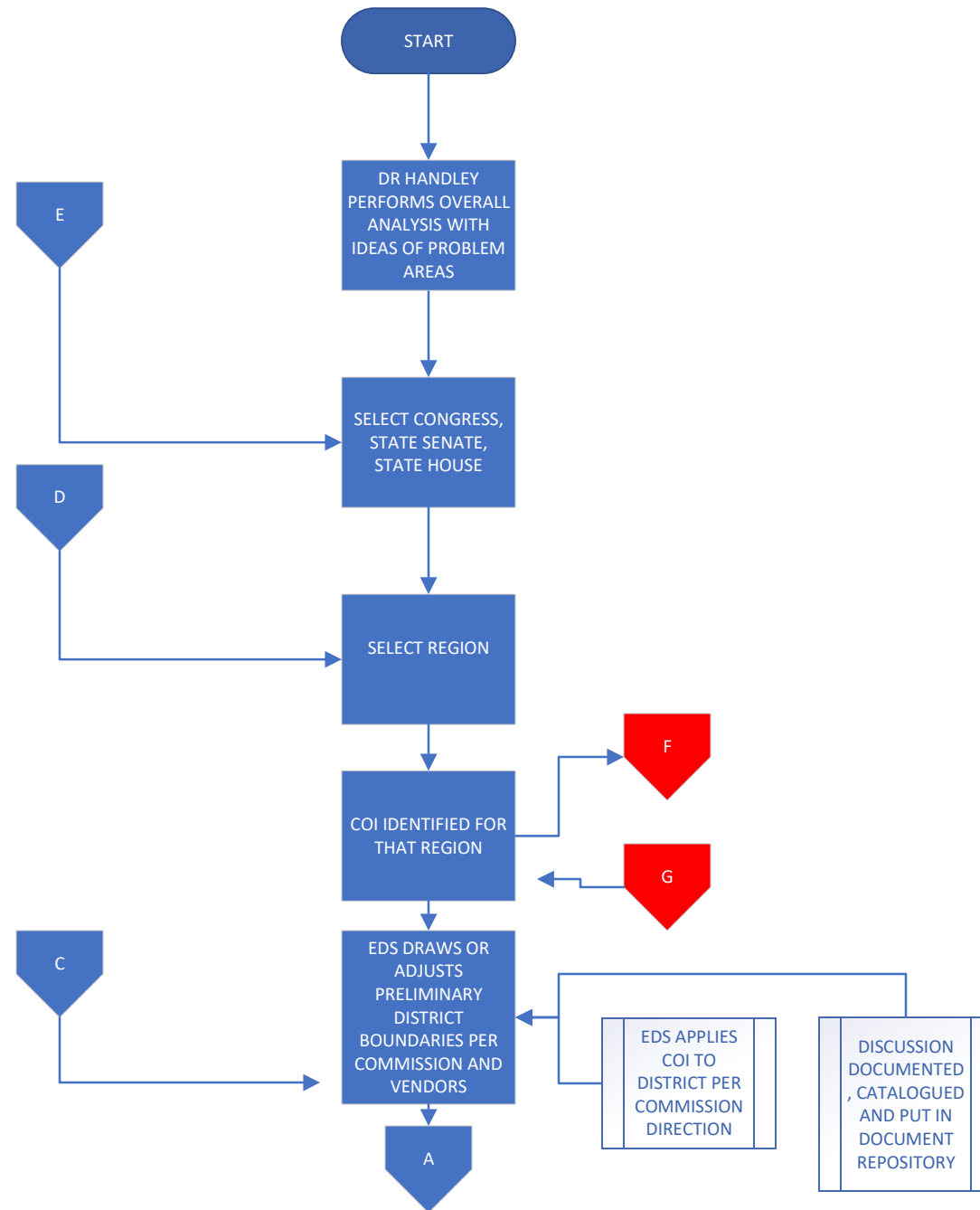
(i) Each commissioner may submit one proposed plan for each type of district to the full commission for consideration.

(ii) Each commissioner shall rank the plans submitted according to preference. Each plan shall be assigned a point value inverse to its ranking among the number of choices, giving the lowest ranked plan one point and the highest ranked plan a point value equal to the number of plans submitted.

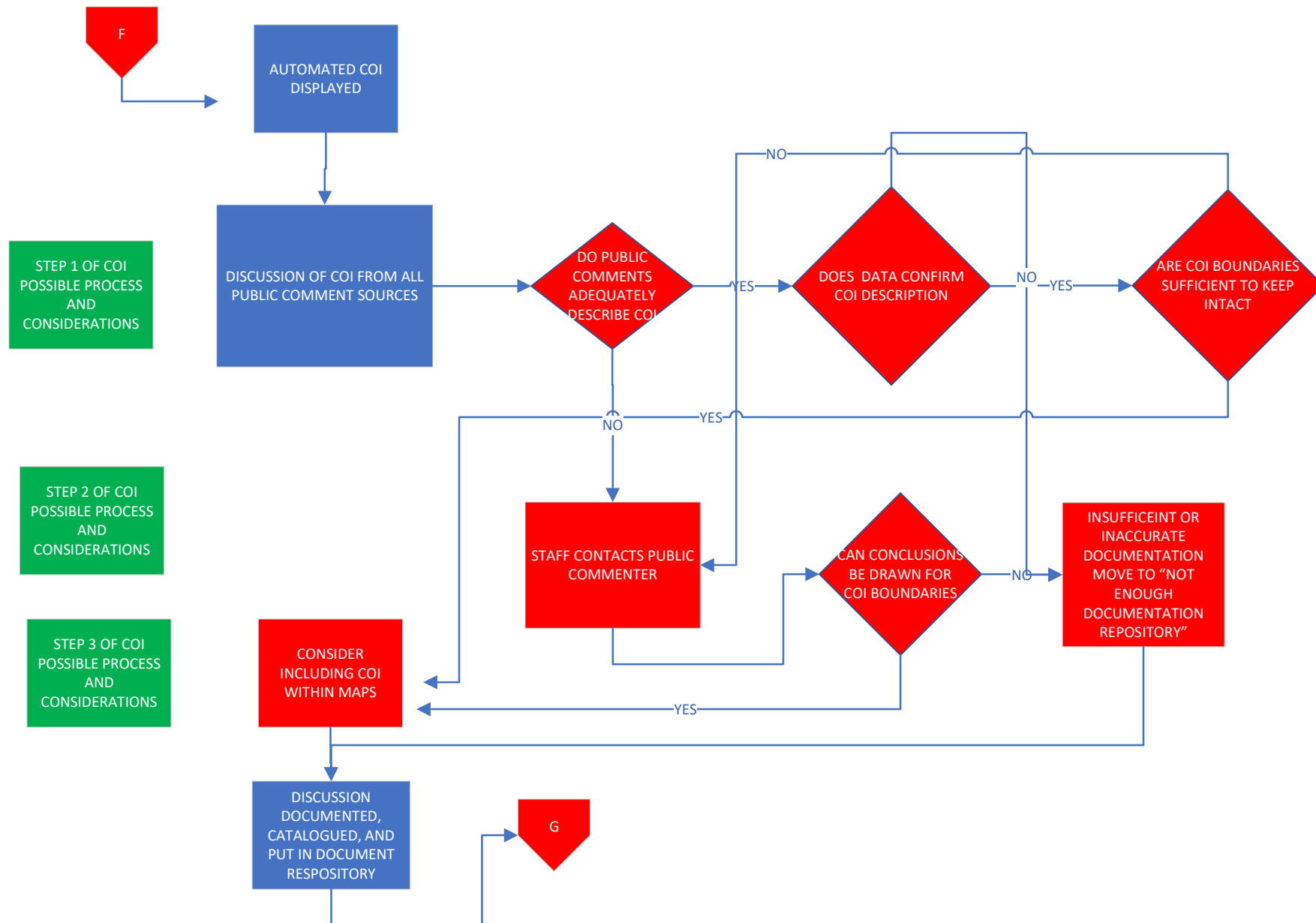
(iii) The commission shall adopt the plan receiving the highest total points, that is also ranked among the top half of plans by at least two commissioners not affiliated with the party of the commissioner submitting the plan, or in the case of a plan submitted by non-affiliated commissioners, is ranked among the top half of plans by at least two commissioners affiliated with a major party. If plans are tied for the highest point total, the secretary of state shall randomly select the final plan from those plans. If no plan meets the requirements of this subparagraph, the secretary of state shall randomly select the final plan from among all submitted plans pursuant to part (14)(c)(i).



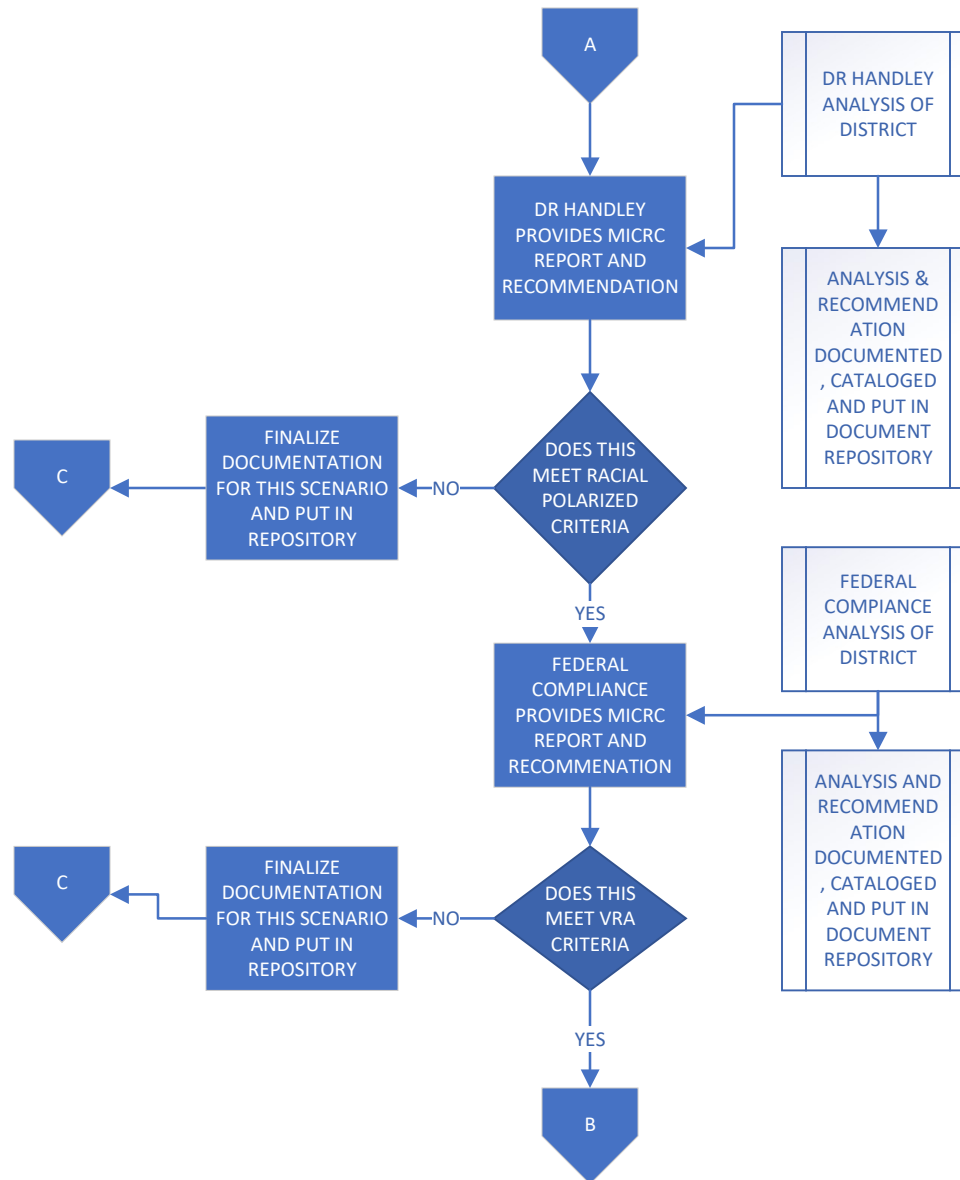
# MICRC Redistricting Process



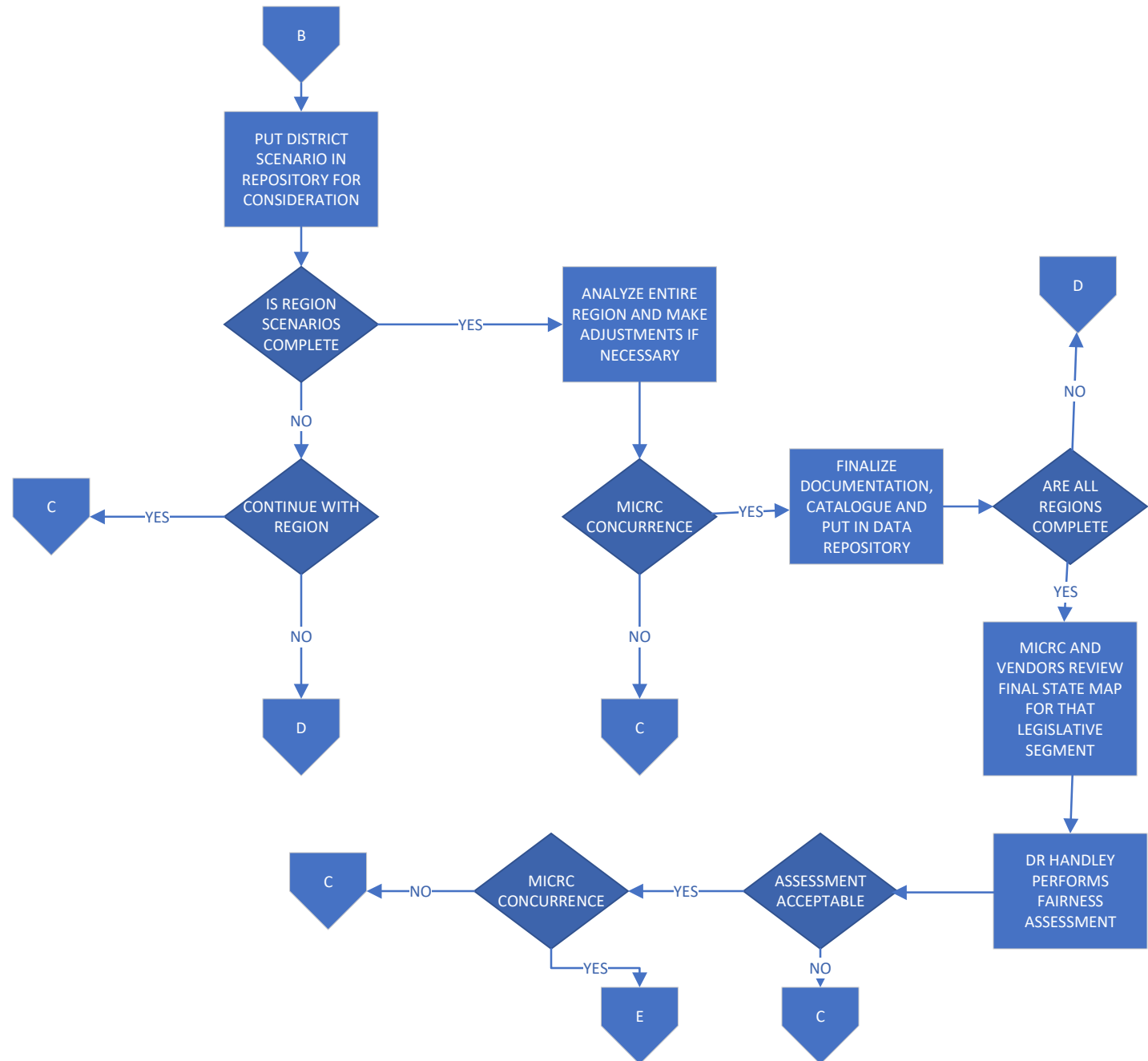
# MICRC Redistricting Process



# MICRC Redistricting Process



# MICRC Redistricting Process



## COI and Public Comment Process and Considerations v.8.16

### Public Comment Formats

#### Public Comment Portal

- COI Maps, State House, State Senate and Congressional Maps, Written Public Comment
- Searchable by keyword or tag using the Advanced Search Feature in the [Comment Gallery](#)
- Downloadable shape files for each type of map
- MGGG Public Comment Reports are available on the [Outreach](#) section of [Michigan.gov/MICRC](#)

#### Emailed, Mailed and PDF Upload Public Comment

- Available in the [Meeting Notices and Materials](#) section of [Michigan.gov/MICRC](#)

#### Live Public Comment (from public hearings and meetings)

- Available to watch recorded livestreams on the [YouTube Playlist](#) or in meeting/hearing transcripts, available in the [Meeting Notices and Materials](#) section of [Michigan.gov/MICRC](#)

#### Key COI Terms and Definitions

**Community of Interest (COI):** “Communities of interest may include, but shall not be limited to, populations that share cultural or historical characteristics or economic interests. Communities of interest do not include relationships with political parties, incumbents, or political candidates.”

**Final COI:** COI submissions reviewed and incorporated by the Commission into district maps.

**Proposed COI:** All COI submissions presented from the public to the Commission for consideration.

### COI Process & Considerations

The following process may assist the Commission with assessment of all proposed Communities of Interest (COIs), available data supporting Communities of Interest and the inclusion of COIs in district maps.

#### STEP 1

Is there sufficient data available to determine a geographical boundary of this proposed community of interest or to ensure its inclusion, in entirety, within the same district?

**IF YES:** Go to step 3

**IF NO:** Go to step 2

#### Considerations to get to Yes or No:

- Assess available public comment submissions describing this community via drawn maps or written/verbal descriptions.
  - Do public comment submissions describing this community of interest agree or conflict?

- b. Examine ACS or other reliable population data
  - i. Does the supplemental data agree or conflict with the public comment's COI description?
- c. Can the Commission sufficiently determine boundaries of the Community of interest, so as not to divide it between multiple districts for each map (if possible), including:
  - i. State House maps
  - ii. State Senate maps
  - iii. Congressional maps

**Note:** Some larger COIs may not fit in entirety within one district.

## **STEP 2**

Is the Commission able to obtain additional information or data about this proposed community of interest?

**IF YES:** Go back to step 1

**IF NO:** Go to step 3

### **Considerations to get to Yes or No:**

- a. Are other public comments available describing this community of interest?
  - i. Do additional public comments describing this community of interest agree or conflict?
- b. Are additional data sources available to supplement this public comment submission (ACS etc.).
- c. Can staff contact the public comment participant or member of the community to provide additional detail and data on populations and geographical boundaries?
- d. Is the Commission able to draw conclusions about the COI boundaries based on available information?

## **STEP 3**

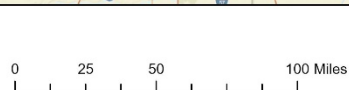
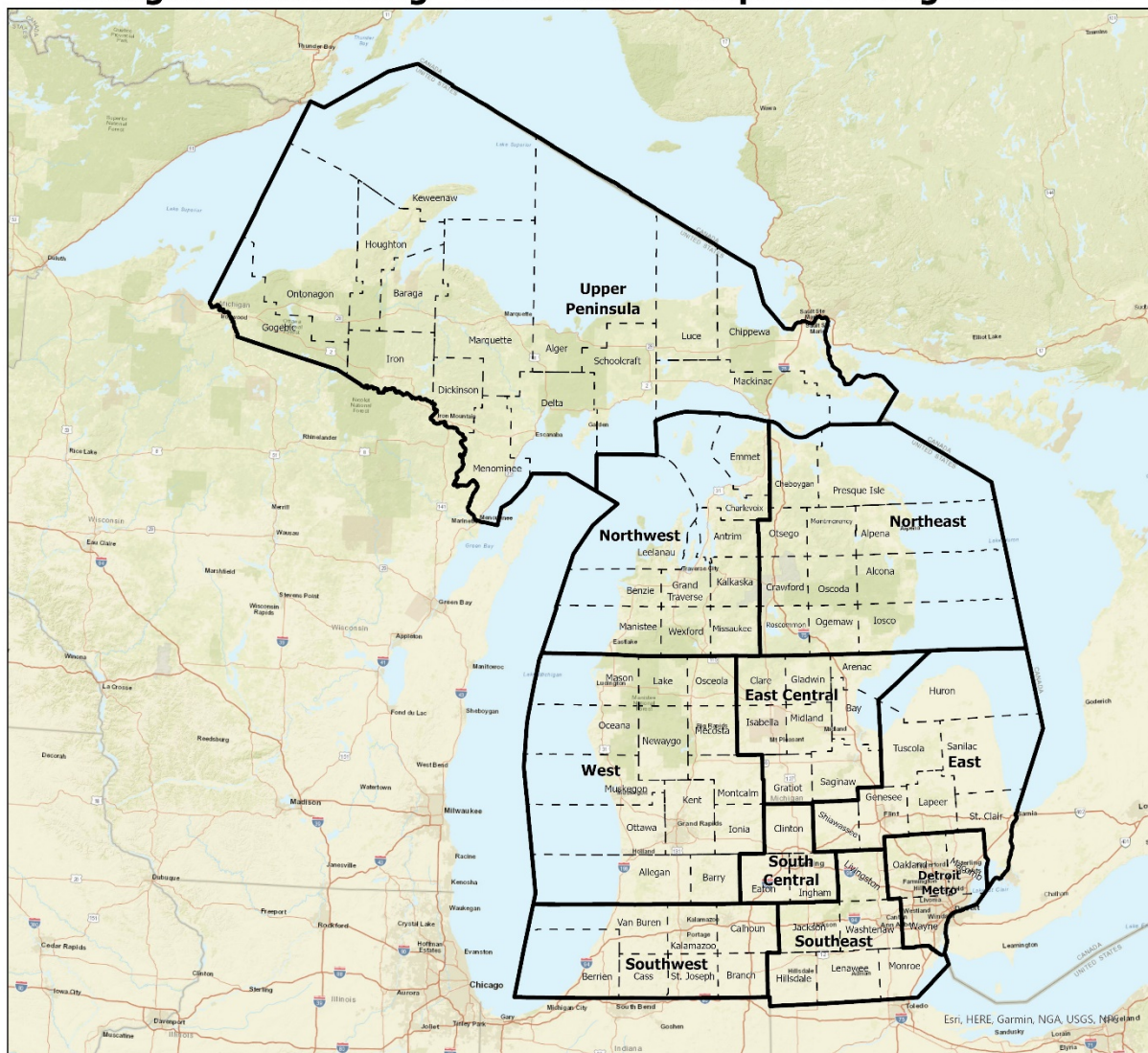
Based on all available information, the Commission may deliberate and include Final COIs special data layer of the COI for reference during the mapping process (if needed) and proceed with deliberation and determination of how this community of interest will be considered or included within electoral district lines.

## **Mapping Software Guidelines Re: Quorum**

The MICRC is committed to transparency and public engagement. The public does not have access to the same software environment as the MICRC. Given that:

1. Intentional sharing (i.e., check boxes on the web-based software to allow viewing of your maps by other Commissioners) of draft maps in any software environment with a quorum of the MICRC or an active Committee of the MICRC is not permitted. This includes situations where a quorum is reached in consecutive interactions (i.e., constructive quorum).
2. Modification of another Commissioner's draft maps in the software is not permitted.
3. Caution should be used when commenting on another Commissioner's draft maps in any software environment. Commenting by a quorum of the MICRC on a draft map is not permitted.
4. Cloning with subsequent modification of the cloned map so that it is clearly distinguishable from the original map is permitted. The source of cloned maps shall be noted if a Commissioner utilizes such map and makes modifications to it.
5. Any proposed maps received from external sources shall not be imported by any Commissioner. External maps received shall be part of the public record and requested to be imported by a majority of the Commission, and if in the appropriate shapefile format, the import will be brought into the system by EDS.

## Michigan Redistricting - Commission Adopted 10 Regional Plan





## **Consensus**

### **Notes from a Presentation to the MICRC by Suann Hammersmith on June 22, 2021**

#### **What is Consensus?**

- A process involving a good-faith effort to reach the best possible outcome among relevant stakeholders and maximize possible gains
- Enables the group to develop mutually acceptable solutions
- Is reached whenever the group, as a whole body, agrees that they are satisfied with the proposals after every effort has been made to get as close as possible to agreement. Consensus discussion will lead to one or more versions of plans, which subsequently will be formally acted upon for consideration by the public. There is no consensus process for decision-making in the MICRC rules. Therefore, formal votes will take place for adopting draft maps for consideration prior to the second round of public hearings; adopting proposed plans for publication triggering the 45-day public comment period; and the final vote to adopt plans.

#### **What isn't Consensus?**

- Majority Rules
- Ever since Robert's Rules were developed in 1876, groups have relied on majority rule. Although it will take more time to build consensus prior to getting to the final map plans, consensus will tend to build agreements that are more stable, effective, and wise. As noted above, a formal process will need to be utilized when adopting draft maps for consideration prior to the second round of public hearings; adopting proposed plans for publication triggering the 45-day public comment period; and the final vote to adopt plans, including two each who affiliate with the Democratic Party, Republican Party, and neither major party.

#### **Why is Consensus Important?**

- It offers a way to increase mutual trust, respect, and commitment.
- It helps establish a common understanding and framework for developing a solution that works for everyone. Stated another way, it seeks to transform adversarial interactions into a cooperative search for data and common ground.
- It invites widespread participation to increase the quality of solutions.
- It offers a way to collaborate to solve complex issues, including developing complex maps, that are most acceptable to all.

#### **Steps to Consensus Building**

1. Set expectations. The MICRC Strategic Plan states how the Commission will work together, including abiding by the core values of integrity, respect, transparency and being purposeful.
2. Determine participant ground rules. Participants include the Commission plus many stakeholders/public commenters, impacting the whole state of Michigan. People behind the scenes, who are affected by the outcome of a decision, may want to block a decision that impacts them. The Commission must seek to discern if people speaking on behalf of a group truly represent that group, and given the geography and varying communities of interest, where

to place lines on the maps. The Commission will need to address reluctance to participate if individuals may feel that they are being forced to “sell out” or give in for too little and continue to explore alternatives until the best one is reached.

3. Develop the process.
4. Engage everyone in framing and reframing the options. Suggestions include: fact-finding, brainstorming, mutually advantageous approaches, consideration of information from experts, dealing with differences in constructive ways, joint ownership, and learning and growing together.
5. Reach agreement.

#### **Suggested Process Criteria**

- Driven by the mission and vision
- Guided by the core values & core competencies
- Encourage listening to others and respectful face-to-face conversation
- Incorporate data and public comment
- Encourage participants to challenge assumptions and fully explore alternatives
- Keep participants engaged and learning
- Commitment to significant efforts to seek consensus

#### **Anticipated Outcomes**

- The best possible agreements; deadlock minimized; the quality of the solutions in making maps is increased
- Participation increases knowledge and builds relationships
- Information and comprehensive analyses are understood and accurate
- Engagement in and ownership of the process
- Shared learnings are extended beyond the immediate group
- Outcomes serve the common good
- Outcomes are fair

## **Getting to Yes Summary**

Source: Review by Lucio Buffalmano

Getting to Yes is a classic book regarding negotiation. The authors, William Ury and Roger Fisher shifted the way the Western world thinks and teaches negotiation tactics and techniques, helping to go from a model of power to one of collaboration.

### **Executive Summary**

- Separate the problems from the people: attack the problem and respect the people
- Negotiate based on interests, not on positions; look for shared interests
- Be open to changing your stance based on facts (if you want the others to be open to your influence as well, which you should)

### **Full Summary**

About the Authors: Roger Fisher studied law at Harvard and later became a professor at Harvard Law School. William Ury studied anthropology and later dedicated himself to negotiation tactics. Their book, Getting to Yes, is based on the analyses and research of the Harvard Negotiation Project, which Ury and Fisher co-founded.

The main focus of “getting to yes” is to avoid adversarial negotiation (positional bargaining), clashes of egos, and escalation that lead to nowhere or to a place where both sides end up losing.

### **Be Soft on People, Hard on Problems**

The authors state that most people fall into two different categories when it comes to negotiation: the soft approach and the hard approach.

The hard approach is assertive or aggressive and seeks to win. The soft approach is more concerned with the relationship, has difficulties saying no, and works well when dealing with others utilizing soft approaches. However, it loses when facing negotiators using a more hardline approach.

The authors argue that you don’t have to choose between hard-hitting or softer approaches. Instead, you can be hard on the issues, while being warm and respectful towards the people.

Differentiating between the people and the issues is one of the key tenets of Getting to Yes and what the authors call “Principled Negotiation”.

### **4 Steps of Principled Negotiation**

Principled Negotiation is based on four steps:

1. Separate people from the problem
2. Focus on interests, not positions
3. Generate options for mutual gain
4. Insist on using objective criteria

#### **1. Separate People from the Problem/Position**

When you identify people with positions or problems, it creates a risk for negotiations to escalate or reach an impasse.

In adversarial negotiations people often end up stuck, sometimes not because of the proposed solution, but because they don't want to be viewed as giving in. Separating people from positions can also help people save face.

- Clarify perceptions - Reach a common understanding of the needs and goals of each position; put yourself in others' shoes
- Recognize and legitimize emotions - Emotions are a common source of adversarial negotiations and escalations. Acknowledge them and let people vent, but never take things personally. Avoid "you" sentences, which can sound harsh or accusatory. If you feel attacked, respond regarding possible solutions.
- Communicate clearly - Miscommunication, false assumptions, and lack of understanding are at the roots of depersonalization and adversarial negotiation.
- Keep in mind that a constant battle for dominance will threaten the relationship.

## **2. Focus on Interests, Not Positions**

When you focus on positions you blind yourself to alternative solutions and it's more likely that you end up in adversarial positions (my position vs. your position). Initially in the case of the MICRC, while drawing draft maps for consideration prior to the second round of public hearings, look for ways to leave 2-4 different draft districts or maps on the table for public input and future consideration.

## **3. Generate Options for Mutual Gain**

Seek solutions and alternatives for win-win and mutual gain. If it's not necessarily mutual gain, seek to find a compromise that both sides can live with or that works to help equalize the give-and-take,

## **4. Insist on Using Objective Criteria**

Using objective criteria and upholding fairness is critical to the work of the Commission.

### **Seek Alternatives**

The BATNA - Best Alternative to a Negotiated Agreement - rests on the assumption that you are only as powerful and strong as the quality of your alternatives. The best way for weaker parties to negotiate with more powerful ones is by investigating and developing alternatives.

### **Unfair Negotiations**

Ury and Fisher suggest drawing attention to any unjust tactics and then negotiating fairer ways moving forward.

### **Real-Life Quick Tips**

- Always aspire to obtain the best results.
- Build the human connection.

- Assure fairness. The most powerful position is convincing others that you're asking for is no more than what's fair.

## **Significant Line Drawing Decisions**

As of August 10, 2021

To exemplify the MICRC commitment to an open, transparent, and fair redistricting process, all significant mapping decisions will be preserved in a repository and posted on the MICRC website with the rationale documented for any major changes. This repository creates a living document with updates made as major changes are made.

Following are significant decisions and the dates adopted:

1. Maps will be drawn from scratch with the existing maps utilized for comparison purposes. - 6/30/2021
2. The state of Michigan will be divided into regions which will be utilized to assist in beginning the drawing of district lines. – 6/30/2021
3. Start the mapping process with the 38 State Senate Districts. – 6/30/2021
4. Document the redistricting process by instructing MICRC and MDOS staff to document significant changes in the minutes, as well as in a separate repository, which shall be posted with a separate heading on the MICRC website. – 6/30/2021
5. Utilize the Redistricting Process Flowchart, as the starting point for the redistricting process. – 6/30/2021
6. Adopt Regional Test Plan #5, consisting of 10 regions with which to begin mapping, and post this plan on the MICRC website. – 7/30/2021 (Document: Michigan Redistricting – Commission Adopted 10 Regional Plan)