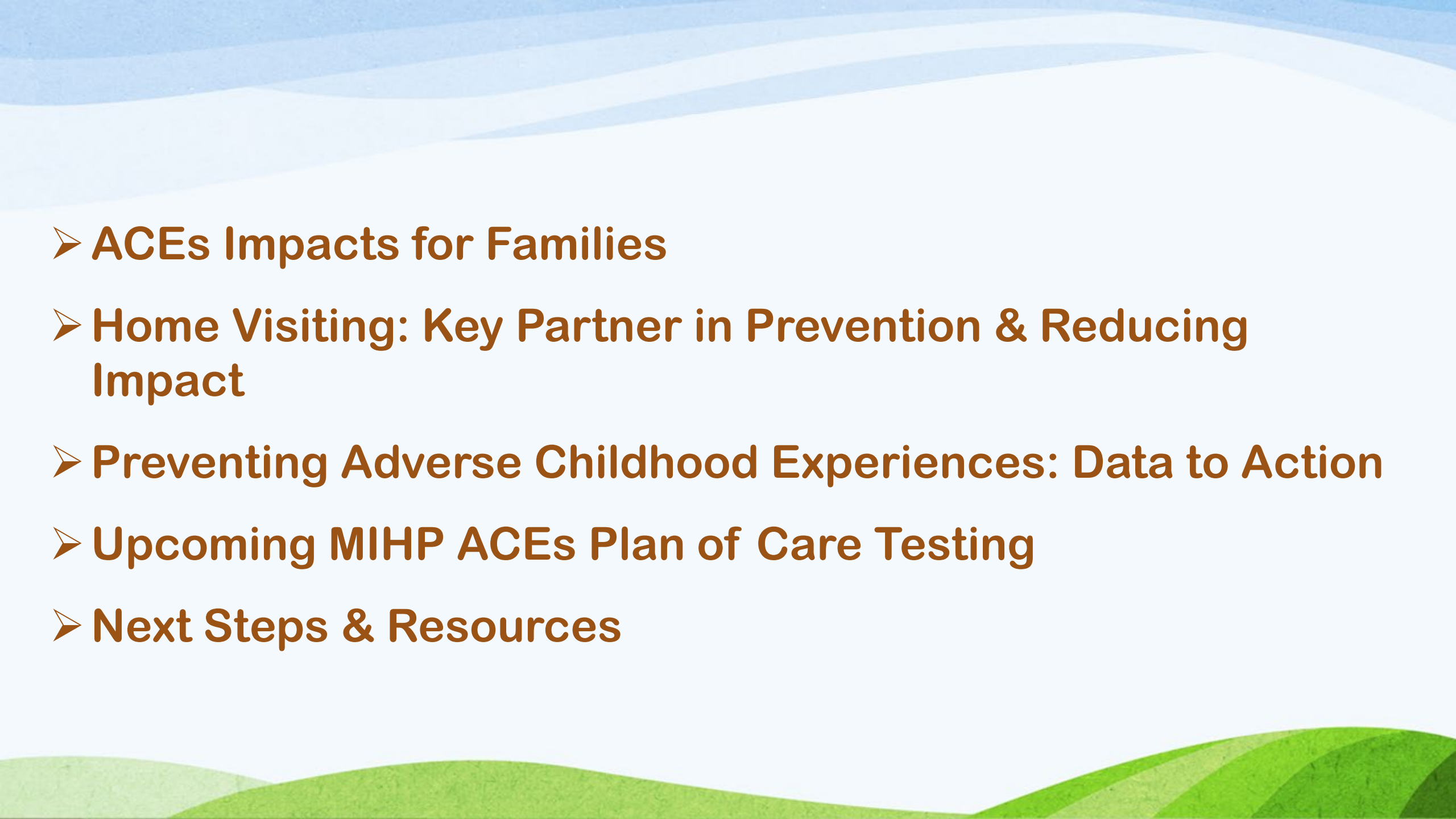


A stylized, colorful illustration of a landscape. The foreground features rolling green hills with a brown path. On the left, there is a green tree, a purple flower, and an orange flower. A small red bird is flying in the sky. The background consists of layered blue and white waves, suggesting a sky or water.

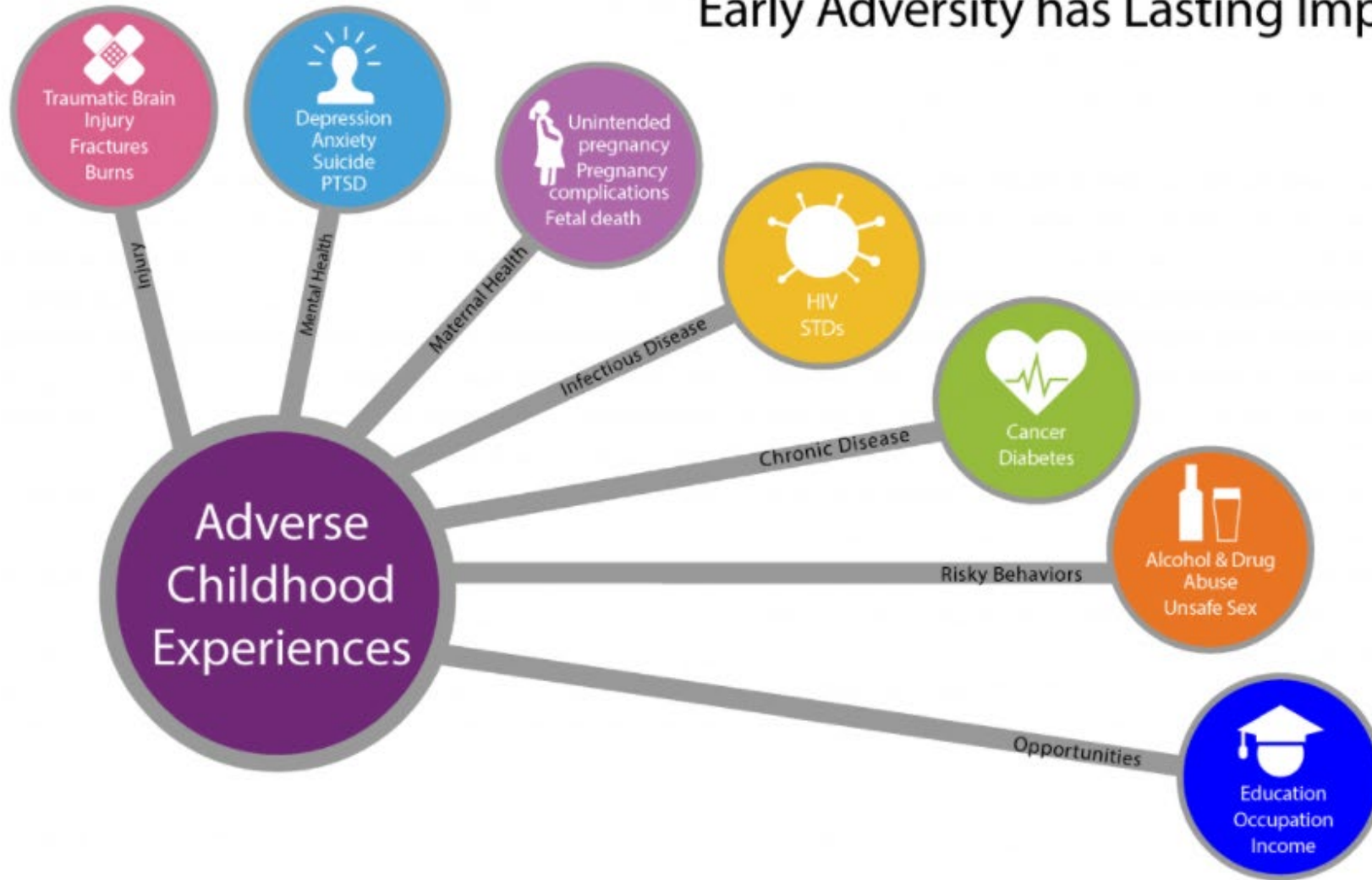
# Looking to better support MIHP families with ACEs

Sara McGirr, PhD and Brenda Dietrich, MPA  
MPHI Center for Healthy Communities  
May 6, 2021

- 
- **ACEs Impacts for Families**
  - **Home Visiting: Key Partner in Prevention & Reducing Impact**
  - **Preventing Adverse Childhood Experiences: Data to Action**
  - **Upcoming MIHP ACEs Plan of Care Testing**
  - **Next Steps & Resources**

# Association between ACEs and Negative Outcomes

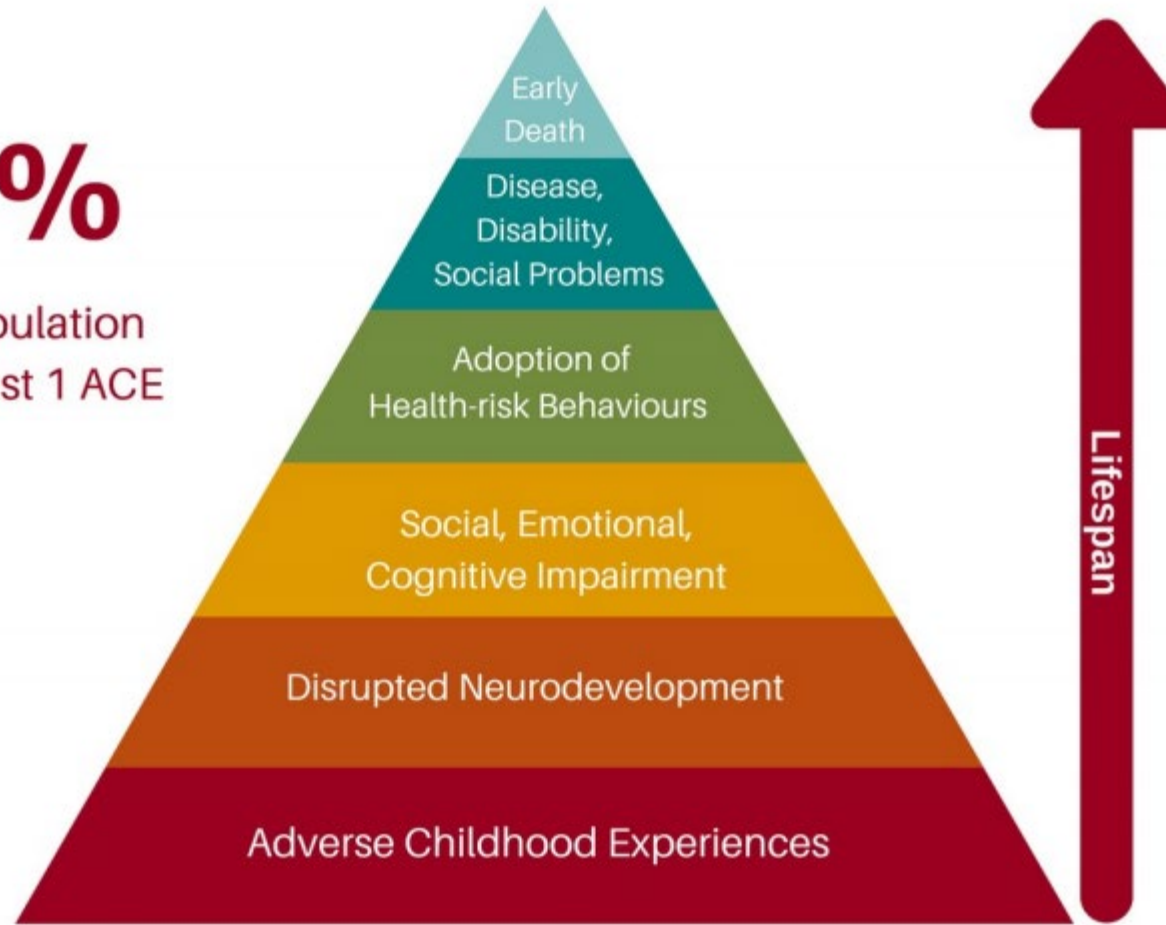
## Early Adversity has Lasting Impacts



**“ Adverse childhood experiences are the single greatest unaddressed public health threat facing our nation today ”**

Dr. Robert Block, the former President of the American Academy of Pediatrics

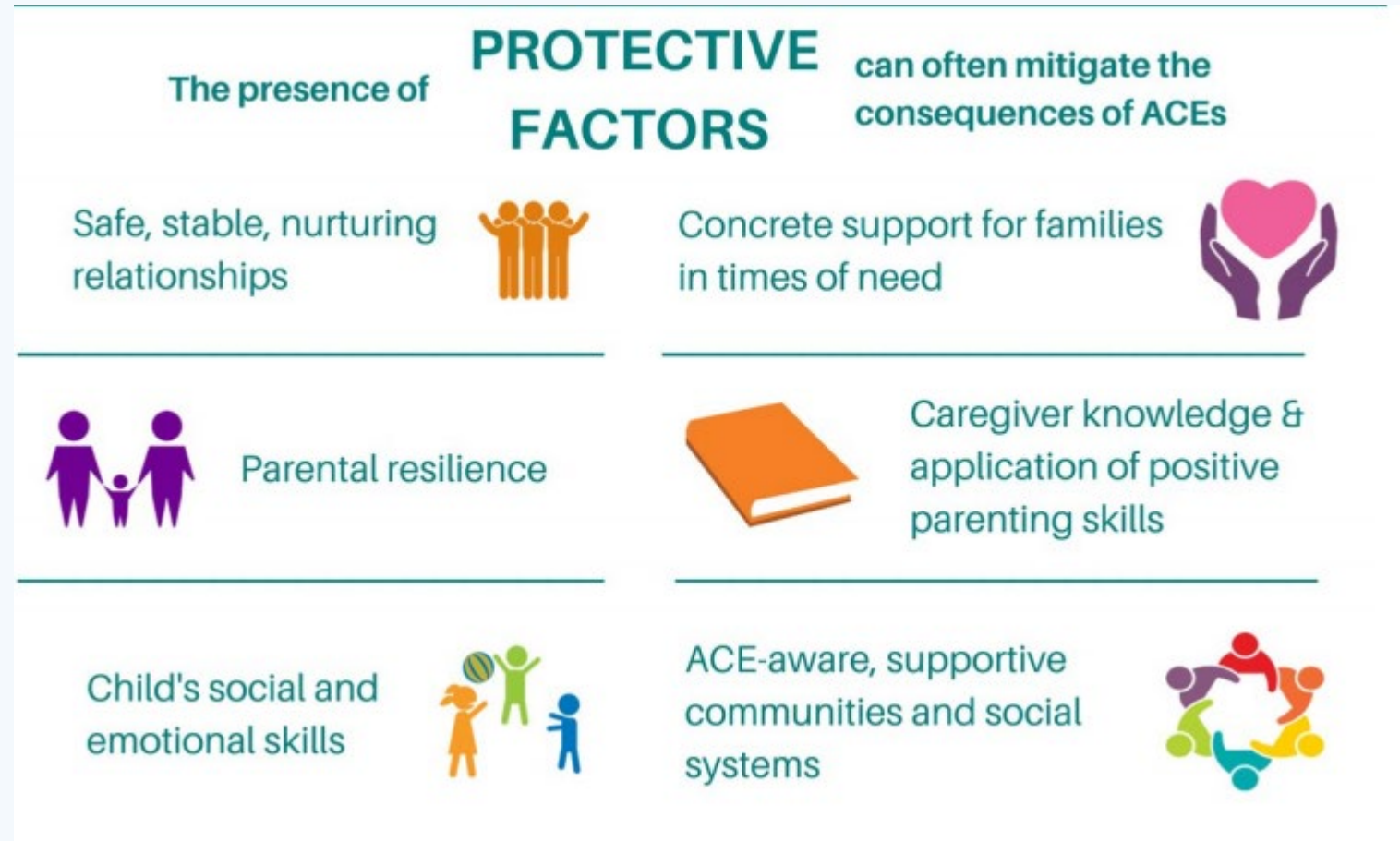
**67%**  
of the population  
have at least 1 ACE



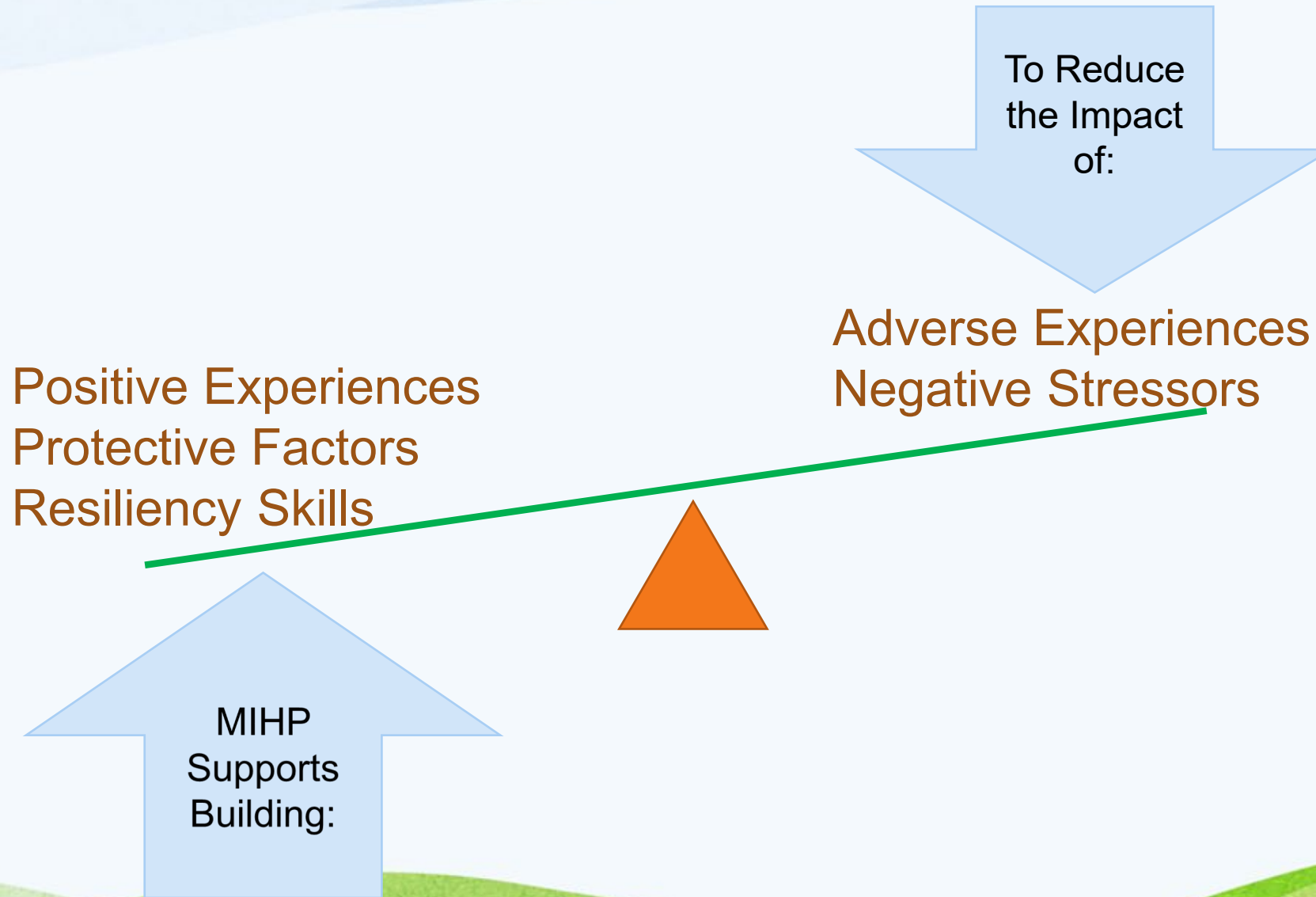
# Home Visiting As Key Partners

**CDC Prevention Strategy:**

**Ensure a strong start for children.**



# Home Visiting As Key Partners



# Home Visiting As Key Partners

*Increasing recognition of this role of home visiting in primary and secondary prevention of ACEs.*

- Some training for home visitors on ACEs
- Michigan Home Visiting Initiative ACEs Resiliency Collaborative
- Michigan ACE Initiative and ACE Master Trainers
- MDHHS Trauma Informed Care

# Preventing Adverse Childhood Experiences: Data to Action

- PACE: D2A CDC Grant
- September 2020-August 2023
- ACEs Prevention Focus Areas:
  - Public Education Campaigns
  - Home Visiting: MIHP ACEs Plan of Care Pilot



# Upcoming MIHP ACEs Plan of Care Testing

- MIHP ACEs Plan of Care
  - Spring-Summer 2021: Draft Plan of Care and Training
  - Recruitment for MIHP programs to test ACEs PoC begins August 2021
  - Orientation and Training for testing programs
  - January 2022 testing begins
  - Revisions and roll out 2023

# Next Steps

- Additional information on becoming a test site to come in August! In the interim if you are interested or have questions, please reach out to Brenda Dietrich. Sites will be selected on a mix of factors including current participation in other MIHP studies, geographic area, type of program, etc.
- Has your MIHP program already integrated some ACEs or trauma informed care training, resources or strategies? If yes, please let Brenda know! We would love to hear what has been successful (or even not as successful) for programs.

Brenda Dietrich [bdietrich@mphi.org](mailto:bdietrich@mphi.org) (517) 324-8316

# Resources to Explore

- 2021 Home Visiting Summit Plenary-Healthy Outcomes from Positive Experiences, HOPE- Dr. Robert Sege, Tufts Medical Center  
<https://www.startearly.org/resource/plenary-sessions-2021-national-home-visiting-summit/>
- Positive and Adverse Childhood Experiences Connection (formerly ACEs Connection) [www.acesconnection.org](http://www.acesconnection.org)
- CDC ACEs Information <https://www.cdc.gov/ace>