



2014 Data Report on Childhood Lead Testing and Elevated Levels: Michigan

Revised March 14, 2016

Robert Scott, PhD
Martha Stanbury, MSPH
Jessica Cooper

Division of Environmental Health
Michigan Department of Health and Human Services

This publication was partially supported by Grant Number BO4MC26674 from the federal Health Resources and Services Administration (HRSA), Grant Number 3UE1EH001267 from the Centers for Disease Control and Prevention (CDC), and the Michigan General Fund.

2014 Data Report on Childhood Lead Testing and Elevated Results: Michigan

Contents

Summary.....	1
Figure 1: Number of Children less than Age 6, tested for Lead, 1998 – 2014, by Medicaid Enrollment Status.....	3
Figure 2: Number of Children Age One and Two tested for Lead, 1998 – 2014, by Medicaid Enrollment Status.....	4
Figure 3: Percent of Children less than Age Six with Blood Lead Levels =>5 µg/dL 1998-2014.....	5
Figure 4: Map of Children less than Age Six with BLLs =>5: 2014.....	6
Table 1: Children less than Age Six Tested for Lead Poisoning -2014: BLL results by County.....	7
Table 2: Children Age One and Two Tested for Lead Poisoning -2014: BLL results by County.....	9
Table 3: Children Tested Lead Poisoning – 2014: Blood Lead Level results for Communities Receiving Funding for Lead Poisoning Prevention in Fiscal 2015.....	11
Table 4: Children under Age Six: Blood Lead Level (BLL) Results by Zip Code sorted by Number of Children with BLL =>5 µg/dL.....	12
Table 5: Children under Age Six: Blood Lead Level (BLL) Results by Zip Code sorted by Percent of Children with BLL =>5 µg/dL.....	16
Table 6: Children under Age Six: Children Tested and Number with BLL =>5 µg/dL sorted by Zip Code.....	20

Introduction and Highlights: 2014

Background:

For over forty years, government, environmental advocates, landlords, schools, and parents have worked to reduce and eliminate childhood lead poisoning hazards. These efforts have led to considerable gains, including increased awareness of lead as an environmental hazard, reductions (and elimination) in the use of lead in consumer products, and improvements in guidance for the testing and the treatment of lead poisoned children.

Unfortunately, lead poisoning is far from eradicated. Exposure to and the lasting effects of lead are magnified in Michigan's urban areas, where aging housing stock and substandard living conditions increase risk. Young children, wherever they live, are particularly vulnerable because of their tendency to put contaminated hands and items such as toys into their mouths.

Why does this matter? Lead is a potent neurotoxin. Exposure to high levels of lead can result in brain damage and in extreme cases even death. Even low levels of lead in the body have been shown to affect IQ, ability to pay attention, and academic achievement. Effects of lead exposure may never go away.

The Michigan Department of Health and Human Services (MDHHS) Childhood Lead Poisoning Prevention Program (CLPPP) was established under MCL 333.5474, which was enacted in 1998 with the goal of preventing lead poisoning by targeting primary and secondary prevention strategies to vulnerable children and their families. One component of the program is the collection, analysis and dissemination of data on children screened for lead poisoning, based on mandatory reporting of all blood lead test results by clinical laboratories. These data are used to identify lead exposed children for case management, conduct data analysis to identify high risk groups, and measure progress in achieving prevention goals.

This is the fourteenth annual statistical summary of reports of children tested for lead in Michigan. Data for this report covers the calendar year 2014. Comparison data are provided for the previous 16 years.

Methods

Data were extracted from the database of blood lead test results that all laboratories submit to CLPPP as required by the Public Health Code. The data in this report are for tested children less than age 6. Each child was counted once each year, even if they had more than one test that year. The counts of children by blood lead level were based on the value representing the highest blood lead level obtained from a venous blood draw, or a capillary blood test if there was no venous test that calendar year.

Blood lead levels (BLL) equal or greater than five micrograms per deciliter of blood ($\geq 5 \mu\text{g}/\text{dL}$) are considered elevated. This reflects updated guidance from CDC in 2012, which was based on findings in a report from their advisory committee on childhood lead poisoning that even low levels of lead in blood present health concerns.¹ In addition to data on numbers of children tested and numbers with elevated BLLs, the county-level data tables include data on the numbers of children in each county and the

¹ Advisory Committee on Childhood Lead Poisoning Prevention. Low level lead exposure harms children: A renewed call for primary prevention. January 4, 2012. Available at www.cdc.gov/nceh/lead/acclpp/final_document_030712.pdf. Accessed 1/30/2016

percent of older homes, based on data from the US Census, because older homes are a risk factor for lead exposure. Zip code level data are presented as well. It should be noted that numbers less than six have been changed from actual values to (“<6”) in the data tables to preserve confidentiality.

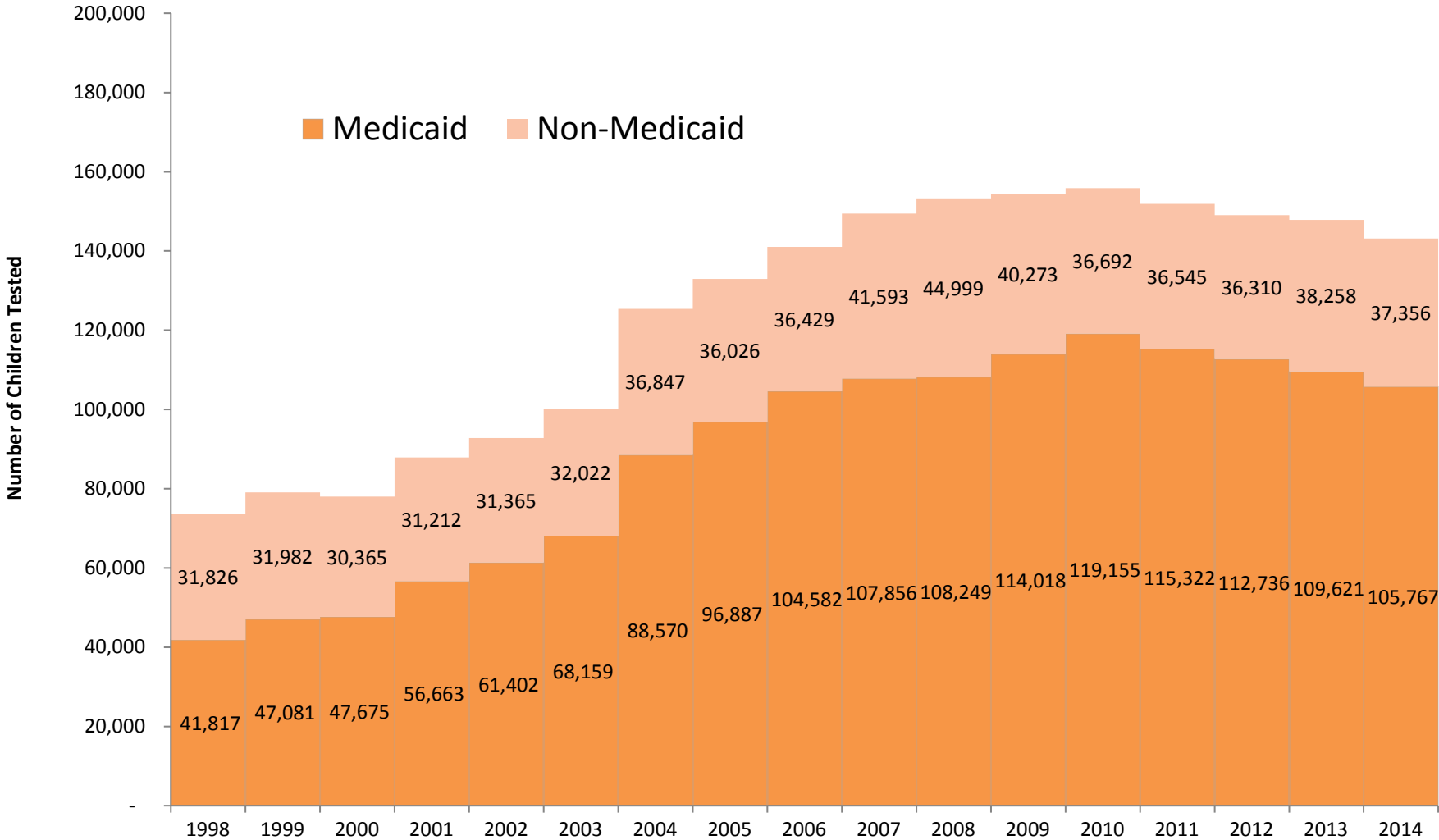
Data Highlights

- 143,123 children less than age 6 were tested for lead in 2014 in Michigan, of which 105,767 (73.8%) were insured by Medicaid.
- Of the 87,917 children age one and two who were tested, 63,127 (71.8%) were insured by Medicaid. Note: Medicaid requires that enrolled children be tested at one and two years of age.
- Wayne County (excluding Detroit) and the City of Detroit had the largest numbers of tested children: 18,348 (22.4%) and 22,842 (38.2%) respectively of tested children in Michigan.
- 5,053 (3.5%) and 3,141 (3.6%) of tested children less than age 6 and age one and two respectively had BLL =>5 µg/dL in 2014.
- The percent of children with BLL =>5 µg/dL declined significantly from 1998, from 44.1% of tested children under age 6 had a blood lead level =>5 µg/dL to 3.5% in 2014.
- The percent of children with elevated BLLs varied from county to county with a range of 10.2% (Lenawee) down to less than 1% (multiple counties).

Uses of the surveillance data in 2014

- Case management: Local health departments were notified weekly of all children in their jurisdiction who had been tested and their blood lead levels, so that interventions could be undertaken among children with elevated BLLs to mitigate and prevent further lead exposure. A nurse consultant at MDHHS supported follow-up clinical case management activities at the LHDs, including fielding almost 2,000 calls/contacts. In 2014 a new web-based system was made available to LHDs where they could access information about all tested children and input information about follow-up interventions, to improve recordkeeping and tracking.
- Abating lead hazards in homes: In addition to individual case management by nurses in Local Health Departments, interventions to reduce or eliminate lead hazards in the homes of children with elevated BLLs were undertaken by the MDHHS Lead Safe Home Program. This program provides assistance to low-moderate income families whose children are lead poisoned or families that live in homes that may poison a child. The program provides resources to identify lead-based paint hazards and hire contractors that will safely remove these hazards. In 2014, approximately 165 homes were abated of lead hazards under this program.
- Increasing blood lead testing: To improve compliance with lead testing requirements, the MDHHS Medicaid program regularly provided information to all of the Medicaid Managed Care Plans of the lead testing status of their patients, by matching Medicaid enrollment files with the lead surveillance data file.
- Collaborations with other organizations: Other agencies were provided with data to target their lead poisoning prevention activities at high risk groups, including the Michigan State Housing Development Authority, Wayne State University and CLEARCorp/Detroit. Data were also provided to three researchers, and custom data summaries were provided to 14 Local Health Departments.
- Education and outreach: An advisory group was convened to develop a comprehensive educational and community outreach prevention plan, and the plan has been put into action.

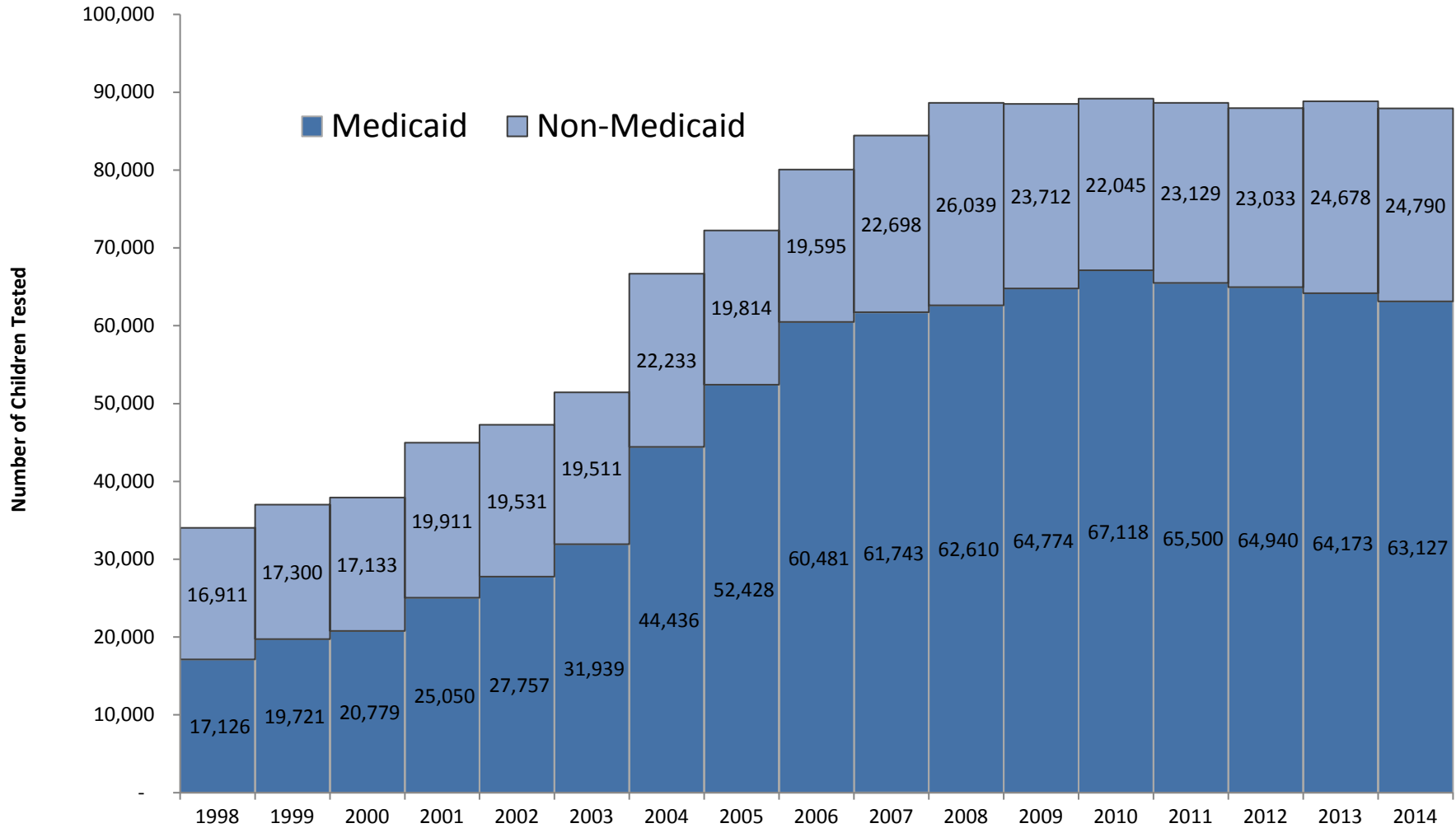
Figure 1: Number of Children Less than Age Six Tested for Lead
 1998 - 2014
 by Medicaid Enrollment Status



January 29, 2016

Source: MDCH Data Warehouse

Figure 2: Number of Children Age One and Two Tested for Lead, 1998 - 2014 by Medicaid Enrolleemnt Status



January 29, 2016

Source: MDCH Data Warehouse

Figure 3: Percentage of Children Less than Age 6 with Blood Lead Levels (BLL) ≥ 5 ug/dL
1998 - 2014

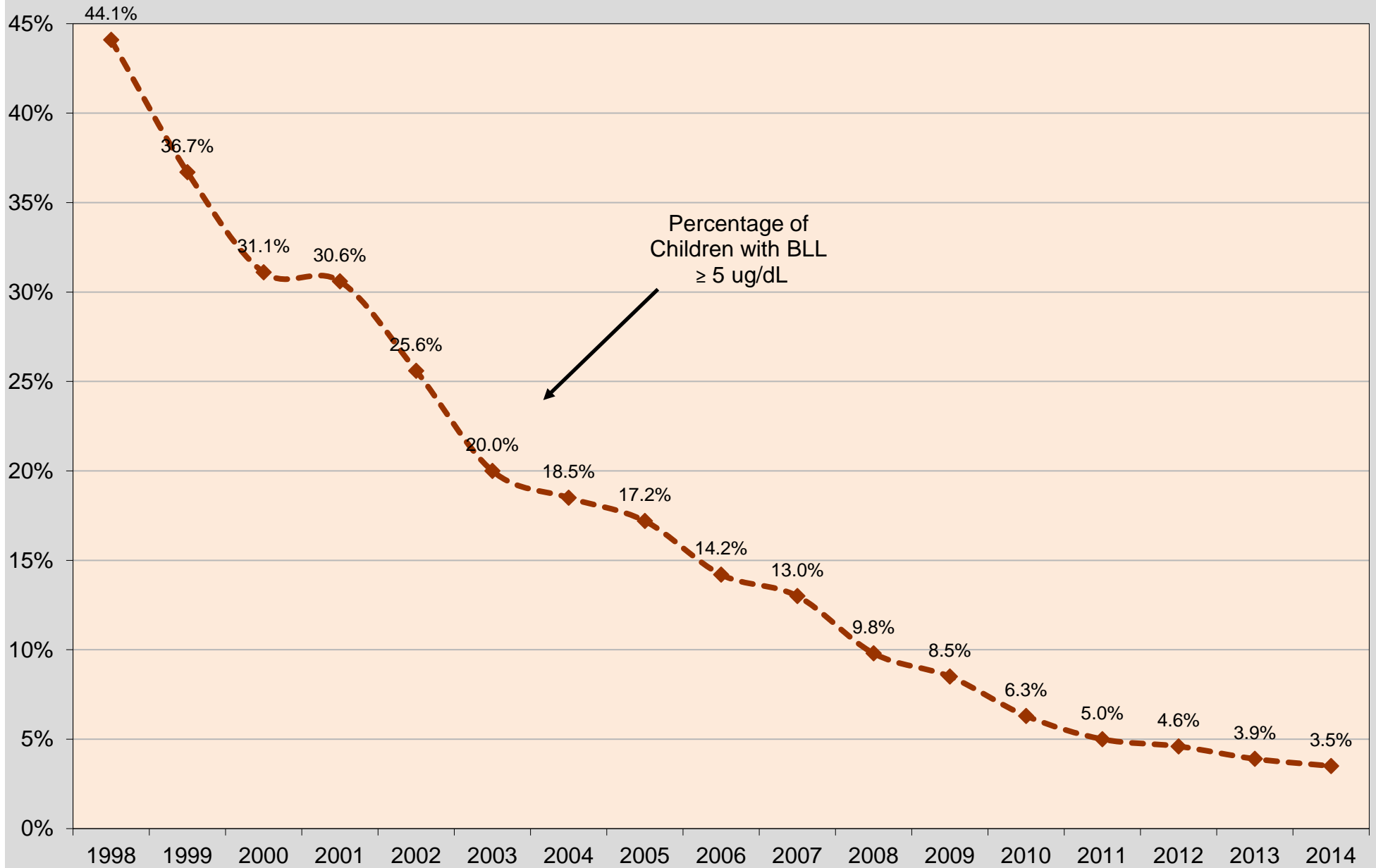


Figure 4: Map of Children less than Age Six with Blood Lead Levels (BLL) $\geq 5 \mu\text{g/dL}$: 2014 (N = 5,053)

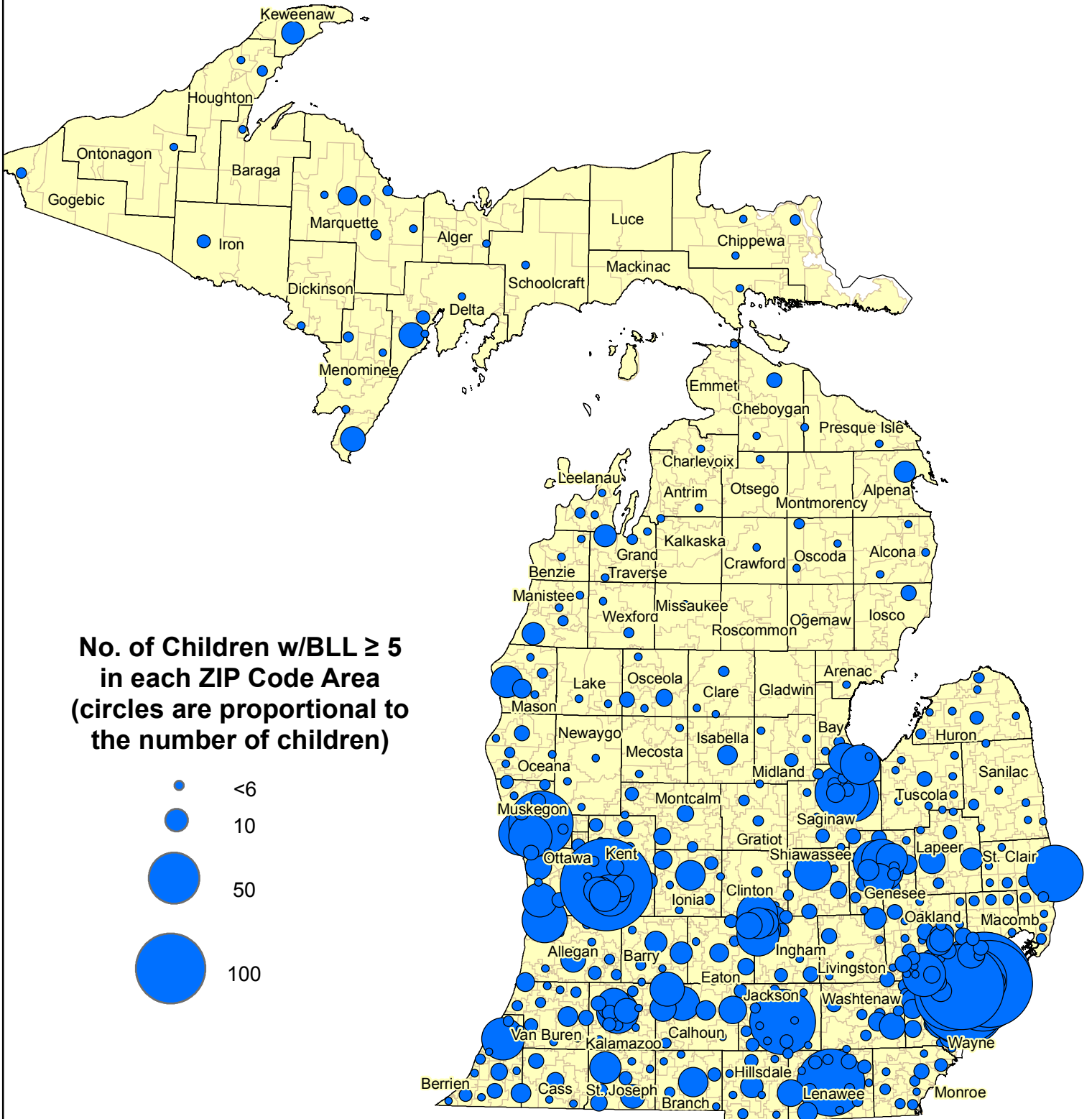


Table 1: Children Less than Age Six Tested for Lead Poisoning -- 2014: Blood Lead Level Results by County

County				Children Tested		Children Tested, by Highest Blood Lead Level (BLL)*							
	% Pre-1950 Housing	% Pre-1978 Housing	Children less than Six Years of Age	Number of Children Tested	% Tested	<5 ug/dL	Capillary BLL >= 5, not confirmed by venous	Venous BLL 5 to 14 ug/dL	Venous BLL >= 15 ug/dL	Total Venous BLL >= 5 ug/dL	% with Venous BLL >= 5 ug/dL	Total BLL >= 5 ug/dL, Venous & Capillary	% BLL >= 5 ug/dL, Venous & Capillary
Alcona	12.4	61.5	398	53	13.3	51	<6	<6	<6	<6	---	<6	---
Alger	29.5	64.1	427	92	21.5	90	<6	<6	<6	<6	---	<6	---
Allegan	23.2	51.1	8,806	1,208	13.7	1,177	28	<6	<6	<6	---	31	2.6
Alpena	25.3	71.6	1,758	257	14.6	248	8	<6	<6	<6	---	9	3.5
Antrim	18.8	52.6	1,370	260	19.0	258	<6	<6	<6	<6	---	<6	---
Arenac	19.8	58.2	870	186	21.4	185	<6	<6	<6	<6	---	<6	---
Baraga	34.0	71.7	477	135	28.3	134	<6	<6	<6	<6	---	<6	---
Barry	27.1	57.3	4,143	491	11.9	468	19	<6	<6	<6	---	23	4.7
Bay	33.9	75.6	7,322	1,408	19.2	1,358	33	13	<6	17	1.2	50	3.6
Benzie	18.6	46.3	1,041	268	25.7	266	<6	<6	<6	<6	---	<6	---
Berrien	28.6	72.2	11,681	1,943	16.6	1,884	29	25	<6	30	1.5	59	3.0
Branch	30.9	65.3	3,506	668	19.1	645	19	<6	<6	<6	---	23	3.4
Calhoun	36.1	75.3	10,149	2,390	23.5	2,290	36	58	6	64	2.7	100	4.2
Cass	22.4	59.9	3,444	426	12.4	414	8	<6	<6	<6	---	12	2.8
Charlevoix	25.3	54.4	1,624	295	18.2	294	<6	<6	<6	<6	---	<6	---
Cheboygan	20.9	53.5	1,414	286	20.2	279	6	<6	<6	<6	---	7	2.4
Chippewa	25.1	58.6	2,345	440	18.8	436	<6	<6	<6	<6	---	<6	---
Clare	14.5	58.8	2,083	446	21.4	442	<6	<6	<6	<6	---	<6	---
Clinton	22.5	52.8	5,140	585	11.4	579	<6	<6	<6	<6	---	6	1.0
Crawford	13.7	55.6	727	85	11.7	84	<6	<6	<6	<6	---	<6	---
Delta	33.3	68.0	2,388	413	17.3	397	14	<6	<6	<6	---	16	3.9
Dickinson	38.9	71.7	1,575	318	20.2	317	<6	<6	<6	<6	---	<6	---
Eaton	20.4	56.4	7,356	1,140	15.5	1,113	23	<6	<6	<6	---	27	2.4
Emmet	23.0	48.3	2,042	362	17.7	362	<6	<6	<6	<6	---	<6	---
Genesee	19.9	68.0	31,997	6,824	21.3	6,646	108	65	<6	70	1.0	178	2.6
Gladwin	12.4	49.5	1,495	291	19.5	291	<6	<6	<6	<6	---	<6	---
Gogebic	50.0	76.7	855	154	18.0	152	<6	<6	<6	<6	---	<6	---
Grand Traverse	14.7	43.5	6,000	1,371	22.9	1,359	9	<6	<6	<6	---	12	0.9
Gratiot	34.7	69.8	2,754	496	18.0	491	<6	<6	<6	<6	---	<6	---
Hillsdale	36.5	63.2	3,283	814	24.8	795	16	<6	<6	<6	---	19	2.3
Houghton	53.4	75.5	2,477	599	24.2	585	6	6	<6	8	1.3	14	2.3
Huron	31.8	68.9	1,873	393	21.0	381	9	<6	<6	<6	---	12	3.1
Ingham	24.9	68.2	19,248	4,747	24.7	4,606	99	36	6	42	0.9	141	3.0
Ionia	35.8	63.0	4,878	843	17.3	816	22	<6	<6	<6	---	27	3.2
Iosco	12.7	65.6	1,233	150	12.2	146	<6	<6	<6	<6	---	<6	---
Iron	44.1	72.1	573	138	24.1	135	<6	<6	<6	<6	---	<6	---
Isabella	16.3	48.2	4,208	640	15.2	632	7	<6	<6	<6	---	8	1.3
Jackson	33.0	67.9	11,296	2,757	24.4	2,602	121	30	<6	34	1.2	155	5.6
Kalamazoo	22.5	62.6	18,588	3,257	17.5	3,172	55	27	<6	30	0.9	85	2.6
Kalkaska	13.2	49.3	1,180	217	18.4	216	<6	<6	<6	<6	---	<6	---
Kent	24.8	59.2	52,655	10,115	19.2	9,645	333	111	26	137	1.4	470	4.6
Keweenaw	46.9	77.6	115	25	21.7	23	<6	<6	<6	<6	---	<6	---
Lake	12.5	52.6	585	120	20.5	118	<6	<6	<6	<6	---	<6	---
Lapeer	20.4	52.9	5,687	919	16.2	890	25	<6	<6	<6	---	29	3.2
Leelanau	17.9	46.5	1,111	239	21.5	234	<6	<6	<6	<6	---	<6	---

Table 1: Children Less than Age Six Tested for Lead Poisoning -- 2014: Blood Lead Level Results by County

County	% Pre-1950 Housing	% Pre-1978 Housing	Children less than Six Years of Age	Children Tested		Children Tested, by Highest Blood Lead Level (BLL)*							
				Number of Children Tested	% Tested	<5 ug/dL	Capillary BLL >= 5, not confirmed by venous	Venous BLL 5 to 14 ug/dL	Venous BLL >= 15 ug/dL	Total Venous BLL >= 5 ug/dL	% with Venous BLL >= 5 ug/dL	Total BLL >= 5 ug/dL, Venous & Capillary	% BLL >= 5 ug/dL, Venous & Capillary
Lenawee	33.6	67.2	6,911	1,196	17.3	1,074	94	24	<6	28	2.3	122	10.2
Livingston	11.4	39.0	12,104	1,026	8.5	1,017	<6	<6	<6	<6	---	9	0.9
Luce	23.8	64.3	370	88	23.8	88	<6	<6	<6	<6	---	<6	---
Mackinac	23.4	58.6	587	130	22.1	129	<6	<6	<6	<6	---	<6	---
Macomb	9.3	59.1	57,878	9,525	16.5	9,397	79	40	9	49	0.5	128	1.3
Manistee	28.8	63.9	1,307	284	21.7	271	10	<6	<6	<6	---	13	4.6
Marquette	27.9	69.4	4,029	471	11.7	458	<6	8	<6	8	1.7	13	2.8
Mason	32.1	64.6	1,864	414	22.2	387	25	<6	<6	<6	---	27	6.5
Mecosta	18.2	53.4	2,520	316	12.5	314	<6	<6	<6	<6	---	<6	---
Menominee	35.4	73.2	1,375	261	19.0	245	12	<6	<6	<6	---	16	6.1
Midland	15.2	58.7	5,685	477	8.4	472	<6	<6	<6	<6	---	<6	---
Missaukee	21.2	56.2	1,111	133	12.0	132	<6	<6	<6	<6	---	<6	---
Monroe	23.0	59.0	10,355	1,571	15.2	1,553	16	<6	<6	<6	---	18	1.1
Montcalm	27.3	57.7	4,527	748	16.5	735	6	6	<6	7	0.9	13	1.7
Montmorency	18.1	58.6	404	83	20.5	82	<6	<6	<6	<6	---	<6	---
Muskegon	25.8	66.2	13,224	2,572	19.4	2,415	79	72	6	78	3.0	157	6.1
Newaygo	19.3	53.6	3,581	447	12.5	440	7	<6	<6	<6	---	7	1.6
Oakland	14.7	60.5	83,501	14,308	17.1	14,102	102	91	13	104	0.7	206	1.4
Oceana	25.8	57.8	2,091	516	24.7	506	<6	<6	<6	<6	---	10	1.9
Ogemaw	12.8	61.6	1,289	102	7.9	101	<6	<6	<6	<6	---	<6	---
Ontonagon	39.1	73.2	251	48	19.1	46	<6	<6	<6	<6	---	<6	---
Osceola	22.6	56.6	1,723	334	19.4	324	<6	<6	<6	6	1.8	10	3.0
Oscoda	17.8	62.1	521	35	6.7	32	<6	<6	<6	<6	---	<6	---
Otsego	12.2	50.3	1,641	325	19.8	324	<6	<6	<6	<6	---	<6	---
Ottawa	15.7	45.3	21,390	3,012	14.1	2,931	64	17	<6	17	0.6	81	2.7
Presque Isle	21.1	66.3	597	111	18.6	109	<6	<6	<6	<6	---	<6	---
Roscommon	13.1	58.7	1,156	218	18.9	218	<6	<6	<6	<6	---	<6	---
Saginaw	28.1	73.1	14,029	3,670	26.2	3,548	84	32	6	38	1.0	122	3.3
Saint Clair	25.8	59.4	11,046	2,731	24.7	2,655	53	20	<6	23	0.8	76	2.8
Saint Joseph	27.5	65.1	5,125	1,012	19.7	971	31	9	<6	10	1.0	41	4.1
Sanilac	30.7	64.6	2,879	523	18.2	517	<6	<6	<6	<6	---	6	1.1
Schoolcraft	25.5	63.3	471	99	21.0	98	<6	<6	<6	<6	---	<6	---
Shiawassee	33.9	68.2	4,622	1,169	25.3	1,131	21	17	<6	17	1.5	38	3.3
Tuscola	30.2	67.4	3,579	886	24.8	874	10	<6	<6	<6	---	12	1.4
Van Buren	23.3	58.1	5,884	862	14.6	832	10	18	<6	20	2.3	30	3.5
Washtenaw	17.2	56.5	22,833	2,604	11.4	2,572	17	12	<6	15	0.6	32	1.2
Wayne ex Det	22.6	74.5	82,002	18,348	22.4	17,939	176	218	15	233	1.3	409	2.2
Wexford	23.0	53.7	2,582	362	14.0	359	<6	<6	<6	<6	---	<6	---
Detroit, City of	62.2	93.2	59,755	22,842	38.2	20,966	330	1,397	149	1,546	6.8	1,876	8.2
MICHIGAN	24.7	64.8	710,976	143,123	20.1	138,070	2,331	2,437	285	2,722	1.9	5,053	3.5

*Reflects each child's highest venous result, or if no venous, then highest capillary result

March 14, 2016

Sources: US Census Bureau, Census 2010 (Pre-1950 Housing and Pre-1978 Housing) and American Community Survey 2013 5-year estimates (Detroit and county population)
MDCH Data Warehouse (children tested)

Table 2: Children Age One and Two Tested for Lead Poisoning -- 2014: Blood Lead Level Results by County

County	% Pre-1950 Housing	% Pre-1978 Housing	Children One to Two Years of Age	Children Tested		Children Tested, by Highest Blood Lead Level (BLL)*							
				Number of Children Tested	% Tested	<5 ug/dL	Capillary BLL >= 5, not confirmed by venous	Venous BLL 5 to 14 ug/dL	Venous BLL >= 15 ug/dL	Total Venous BLL >= 5 ug/dL	% with Venous BLL >= 5 ug/dL	Total BLL >= 5 ug/dL, Venous & Capillary	% BLL >= 5 ug/dL, Venous & Capillary
Alcona	12.4	61.5	130	43	33.1	41	<6	<6	<6	<6	---	<6	---
Alger	29.5	64.1	130	76	58.5	74	<6	<6	<6	<6	---	<6	---
Allegan	23.2	51.1	2,888	872	30.2	848	21	<6	<6	<6	---	24	2.8
Alpena	25.3	71.6	570	218	38.2	210	7	<6	<6	<6	---	8	3.7
Antrim	18.8	52.6	450	191	42.4	189	<6	<6	<6	<6	---	<6	---
Arenac	19.8	58.2	281	136	48.4	135	<6	<6	<6	<6	---	<6	---
Baraga	34.0	71.7	165	91	55.2	91	<6	<6	<6	<6	---	<6	---
Barry	27.1	57.3	1,328	387	29.1	371	13	<6	<6	<6	---	16	4.1
Bay	33.9	75.6	2,410	1,233	51.2	1,195	26	11	<6	12	1.0	38	3.1
Benzie	18.6	46.3	338	178	52.7	176	<6	<6	<6	<6	---	<6	---
Berrien	28.6	72.2	3,855	1,602	41.6	1,554	27	17	<6	21	1.3	48	3.0
Branch	30.9	65.3	1,157	239	20.7	232	6	<6	<6	<6	---	7	2.9
Calhoun	36.1	75.3	3,366	1,317	39.1	1,257	18	39	<6	42	3.2	60	4.6
Cass	22.4	59.9	1,120	364	32.5	353	8	<6	<6	<6	---	11	3.0
Charlevoix	25.3	54.4	523	213	40.7	212	<6	<6	<6	<6	---	<6	---
Cheboygan	20.9	53.5	457	214	46.8	209	<6	<6	<6	<6	---	<6	---
Chippewa	25.1	58.6	775	268	34.6	265	<6	<6	<6	<6	---	<6	---
Clare	14.5	58.8	700	359	51.3	355	<6	<6	<6	<6	---	<6	---
Clinton	22.5	52.8	1,650	342	20.7	338	<6	<6	<6	<6	---	<6	---
Crawford	13.7	55.6	237	67	28.3	66	<6	<6	<6	<6	---	<6	---
Delta	33.3	68.0	782	351	44.9	335	14	<6	<6	<6	---	16	4.6
Dickinson	38.9	71.7	529	288	54.4	287	<6	<6	<6	<6	---	<6	---
Eaton	20.4	56.4	2,410	772	32.0	753	16	<6	<6	<6	---	19	2.5
Emmet	23.0	48.3	656	266	40.5	266	<6	<6	<6	<6	---	<6	---
Genesee	19.9	68.0	10,583	4,326	40.9	4,207	77	39	<6	42	1.0	119	2.8
Gladwin	12.4	49.5	486	193	39.7	193	<6	<6	<6	<6	---	<6	---
Gogebic	50.0	76.7	285	117	41.1	115	<6	<6	<6	<6	---	<6	---
Grand Traverse	14.7	43.5	1,955	893	45.7	887	<6	<6	<6	<6	---	6	0.7
Gratiot	34.7	69.8	909	359	39.5	356	<6	<6	<6	<6	---	<6	---
Hillsdale	36.5	63.2	1,079	395	36.6	384	8	<6	<6	<6	---	11	2.8
Houghton	53.4	75.5	828	505	61.0	493	<6	6	<6	8	1.6	12	2.4
Huron	31.8	68.9	607	229	37.7	220	8	<6	<6	<6	---	9	3.9
Ingham	24.9	68.2	6,426	2,832	44.1	2,749	61	20	<6	22	0.8	83	2.9
Ionia	35.8	63.0	1,590	628	39.5	604	20	<6	<6	<6	---	24	3.8
Iosco	12.7	65.6	397	124	31.2	121	<6	<6	<6	<6	---	<6	---
Iron	44.1	72.1	193	120	62.2	118	<6	<6	<6	<6	---	<6	---
Isabella	16.3	48.2	1,392	462	33.2	458	<6	<6	<6	<6	---	<6	---
Jackson	33.0	67.9	3,716	2,021	54.4	1,900	95	23	<6	26	1.3	121	6.0
Kalamazoo	22.5	62.6	6,166	1,889	30.6	1,838	30	19	<6	21	1.1	51	2.7
Kalkaska	13.2	49.3	395	138	34.9	137	<6	<6	<6	<6	---	<6	---
Kent	24.8	59.2	17,514	8,193	46.8	7,816	273	83	21	104	1.3	377	4.6
Keweenaw	46.9	77.6	39	21	53.8	19	<6	<6	<6	<6	---	<6	---
Lake	12.5	52.6	192	87	45.3	86	<6	<6	<6	<6	---	<6	---
Lapeer	20.4	52.9	1,780	705	39.6	680	23	<6	<6	<6	---	25	3.5
Leelanau	17.9	46.5	350	169	48.3	165	<6	<6	<6	<6	---	<6	---

Table 2: Children Age One and Two Tested for Lead Poisoning -- 2014: Blood Lead Level Results by County

County	% Pre-1950 Housing	% Pre-1978 Housing	Children One to Two Years of Age	Children Tested		Children Tested, by Highest Blood Lead Level (BLL)*							
				Number of Children Tested	% Tested	<5 ug/dL	Capillary BLL >= 5, not confirmed by venous	Venous BLL 5 to 14 ug/dL	Venous BLL >= 15 ug/dL	Total Venous BLL >= 5 ug/dL	% with Venous BLL >= 5 ug/dL	Total BLL >= 5 ug/dL, Venous & Capillary	% BLL >= 5 ug/dL, Venous & Capillary
Lenawee	33.6	67.2	2,248	688	30.6	613	57	15	<6	18	2.6	75	10.9
Livingston	11.4	39.0	3,871	750	19.4	741	<6	<6	<6	<6	---	9	1.2
Luce	23.8	64.3	121	79	65.3	79	<6	<6	<6	<6	---	<6	---
Mackinac	23.4	58.6	193	113	58.5	112	<6	<6	<6	<6	---	<6	---
Macomb	9.3	59.1	19,051	6,156	32.3	6,075	52	25	<6	29	0.5	81	1.3
Manistee	28.8	63.9	411	247	60.1	235	9	<6	<6	<6	---	12	4.9
Marquette	27.9	69.4	1,364	414	30.4	402	<6	7	<6	7	1.7	12	2.9
Mason	32.1	64.6	620	111	17.9	106	<6	<6	<6	<6	---	<6	---
Mecosta	18.2	53.4	851	279	32.8	277	<6	<6	<6	<6	---	<6	---
Menominee	35.4	73.2	442	219	49.5	203	12	<6	<6	<6	---	16	7.3
Midland	15.2	58.7	1,842	297	16.1	295	<6	<6	<6	<6	---	<6	---
Missaukee	21.2	56.2	359	113	31.5	112	<6	<6	<6	<6	---	<6	---
Monroe	23.0	59.0	3,378	1,158	34.3	1,143	13	<6	<6	<6	---	15	1.3
Montcalm	27.3	57.7	1,493	494	33.1	484	<6	<6	<6	6	1.2	10	2.0
Montmorency	18.1	58.6	131	64	48.9	63	<6	<6	<6	<6	---	<6	---
Muskegon	25.8	66.2	4,384	1,652	37.7	1,546	53	47	6	53	3.2	106	6.4
Newaygo	19.3	53.6	1,172	395	33.7	388	7	<6	<6	<6	---	7	1.8
Oakland	14.7	60.5	27,292	7,882	28.9	7,759	68	47	8	55	0.7	123	1.6
Oceana	25.8	57.8	685	276	40.3	271	<6	<6	<6	<6	---	<6	---
Ogemaw	12.8	61.6	413	81	19.6	80	<6	<6	<6	<6	---	<6	---
Ontonagon	39.1	73.2	82	31	37.8	29	<6	<6	<6	<6	---	<6	---
Osceola	22.6	56.6	564	260	46.1	251	<6	<6	<6	6	2.3	9	3.5
Oscoda	17.8	62.1	168	18	10.7	16	<6	<6	<6	<6	---	<6	---
Otsego	12.2	50.3	540	197	36.5	197	<6	<6	<6	<6	---	<6	---
Ottawa	15.7	45.3	7,046	2,576	36.6	2,507	56	13	<6	13	0.5	69	2.7
Presque Isle	21.1	66.3	193	89	46.1	87	<6	<6	<6	<6	---	<6	---
Roscommon	13.1	58.7	379	172	45.4	172	<6	<6	<6	<6	---	<6	---
Saginaw	28.1	73.1	4,623	2,756	59.6	2,670	59	22	<6	27	1.0	86	3.1
Saint Clair	25.8	59.4	3,574	1,333	37.3	1,296	27	8	<6	10	0.8	37	2.8
Saint Joseph	27.5	65.1	1,684	691	41.0	665	21	<6	<6	<6	---	26	3.8
Sanilac	30.7	64.6	949	291	30.7	286	<6	<6	<6	<6	---	<6	---
Schoolcraft	25.5	63.3	151	80	53.0	80	<6	<6	<6	<6	---	<6	---
Shiawassee	33.9	68.2	1,503	749	49.8	718	18	13	<6	13	1.7	31	4.1
Tuscola	30.2	67.4	1,174	650	55.4	639	10	<6	<6	<6	---	11	1.7
Van Buren	23.3	58.1	1,924	507	26.4	490	7	8	<6	10	2.0	17	3.4
Washtenaw	17.2	56.5	7,560	1,834	24.3	1,809	12	10	<6	13	0.7	25	1.4
Wayne ex Det	22.6	74.5	26,966	9,769	36.2	9,539	107	118	7	125	1.3	232	2.4
Wexford	23.0	53.7	865	312	36.1	309	<6	<6	<6	<6	---	<6	---
Detroit, City of	62.2	93.2	20,048	9,641	48.1	8,674	185	692	88	780	8.1	965	10.0
MICHIGAN	24.7	64.8	234,103	87,917	37.6	84,776	1,608	1,352	181	1,533	1.7	3,141	3.6

*Reflects each child's highest venous result, or if no venous, then highest capillary result

January 29, 2016

Sources: US Census Bureau, Census 2010 (Pre-1950 Housing and Pre-1978 Housing) and American Community Survey 2013 5-year estimates (Detroit and county population)
MDCH Data Warehouse (children tested)

Table 3: Children Tested for Lead Poisoning -- 2014: Blood Lead Level Results for Communities Receiving Funding for Lead Poisoning Prevention in FY15

Children less than Six Years of Age

Community	%Pre-1950 Housing	%Pre-1978 Housing	Children less than Six Years of Age	Children Tested		Children Tested, by Highest Blood Lead Level (BLL)*							
				Number of Children Tested	% Tested	<5 ug/dL	Capillary BLL >= 5, not confirmed by venous	Venous BLL 5 to 14 ug/dL	Venous BLL >= 15 ug/dL	Total Venous BLL ≥ 5 µg/dL	% with Venous BLL >= 5 ug/dL	Total BLL ≥ 5 µg/dL, Venous & Capillary	% BLL >= 5 ug/dL, Venous & Capillary
Detroit	62.2	93.3	59,755	22,842	38.2	20,966	330	1,397	149	1,546	6.8	1,876	8.2
Flint	38.0	89.7	9,639	2,343	24.3	2,237	48	53	<6	58	2.5	106	4.5
Grand Rapids	48.1	81.5	17,577	4,379	24.9	4,020	244	94	21	115	2.6	359	8.2
Hamtramck	78.2	94.6	2,303	1,008	43.8	929	28	48	<6	51	5.1	79	7.8
Highland Park	68.8	87.9	711	289	40.6	243	<6	37	<6	41	14.2	46	15.9
Jackson	67.6	91.6	3,550	1,069	30.1	976	74	16	<6	19	1.8	93	8.7
Lansing	35.7	81.9	10,236	2,995	29.3	2,892	72	27	<6	31	1.0	103	3.4
Muskegon/MuskHts	48.6	84.4	4,392	1,177	26.8	1,054	55	62	6	68	5.8	123	10.5
Subtotal	53.5	88.4	108,163	36,102	33.4	33,317	856	1,734	195	1,925	5.3	2,785	7.7
Michigan	24.7	64.8	710,976	143,123	20.1	138,070	2,331	2,437	285	2,722	1.9	5,053	3.5

Children One and Two Years of Age

Community	%Pre-1950 Housing	%Pre-1978 Housing	Children One and Two Years of Age	Children Tested		Children Tested, by Highest Blood Lead Level (BLL)*							
				Number of Children Tested	% Tested	<5 ug/dL	Capillary BLL >= 5, not confirmed by venous	Venous BLL 5 to 14 ug/dL	Venous BLL >= 15 ug/dL	Total Venous BLL ≥ 5 µg/dL	% with Venous BLL >= 5 ug/dL	Total BLL ≥ 5 µg/dL, Venous & Capillary	% BLL >= 5 ug/dL, Venous & Capillary
Detroit	62.2	93.3	20,048	9,641	48.1	8,674	185	692	88	780	8.1	965	10.0
Flint	38.0	89.7	3,266	1,502	46.0	1,431	36	32	<6	35	2.3	71	4.7
Grand Rapids	48.1	81.5	5,962	3,464	58.1	3,180	200	67	17	84	2.4	284	8.2
Hamtramck	78.2	94.6	756	455	60.2	409	17	27	<6	29	6.4	46	10.1
Highland Park	68.8	87.9	214	127	59.3	102	<6	20	<6	22	17.3	25	19.7
Jackson	67.6	91.6	1,204	740	61.5	666	60	12	<6	14	1.9	74	10.0
Lansing	35.7	81.9	3,523	1,751	49.7	1,689	45	15	<6	17	1.0	62	3.5
Muskegon/MuskHts	48.6	84.4	1,497	705	47.1	622	34	43	6	49	7.0	83	11.8
Subtotal	53.5	88.4	36,470	18,385	50.4	16,773	580	908	122	1,030	5.6	1,610	8.8
Michigan	24.7	64.8	234,103	87,917	37.6	84,776	1,608	1,352	181	1,533	1.8	3,141	3.6

*Reflects each child's highest venous result, or if no venous, then highest capillary result

**Table 4: Children under Age Six Tested for Lead Poisoning 2014:
Blood Lead Level (BLL) Results by ZIP Code, Sorted by Number of Children w/BLL \geq 5 ug/dL**

ZIP	Post Office Name	Children less than Six Years of Age	Children Tested		Children with Elevated Blood Lead Levels*	
			Number of Children Tested	% Tested	Number BLL \geq 5 μ g/dL, Venous & Capillary	% BLL \geq 5 μ g/dL, Venous & Capillary
48205	Detroit	4,233	1540	36.4	164	10.6
49507	Grand Rapids	4,361	1309	30.0	144	11.0
48224	Detroit	4,024	1591	39.5	139	8.7
48210	Detroit	3,933	1559	39.6	138	8.9
48206	Detroit	1,665	644	38.7	136	21.1
48212	Detroit/Hamtramck	4,007	1584	39.5	134	8.5
48204	Detroit	2,271	801	35.3	131	16.4
48238	Detroit	2,584	995	38.5	128	12.9
48209	Detroit	4,220	1497	35.5	124	8.3
48213	Detroit	2,368	808	34.1	108	13.4
48214	Detroit	1,516	613	40.4	107	17.5
48227	Detroit	3,524	1432	40.6	103	7.2
48203	Detroit/Highland Park	2,195	734	33.4	95	12.9
48228	Detroit	5,037	2070	41.1	93	4.5
49221	Adrian	2,982	638	21.4	76	11.9
49504	Grand Rapids	3,696	812	22.0	76	9.4
49442	Muskegon	3,726	814	21.8	73	9.0
49203	Jackson	3,407	858	25.2	73	8.5
48234	Detroit	3,005	1124	37.4	64	5.7
49503	Grand Rapids	3,180	829	26.1	62	7.5
48202	Detroit	955	391	40.9	60	15.3
48221	Detroit	2,476	942	38.0	60	6.4
48060	Port Huron	3,627	1291	35.6	56	4.3
48219	Detroit	3,543	1524	43.0	56	3.7
48602	Saginaw	2,819	776	27.5	52	6.7
48601	Saginaw	3,543	1184	33.4	49	4.1
48211	Detroit/Hamtramck	694	252	36.3	47	18.7
48235	Detroit	3,103	1255	40.4	43	3.4
48215	Detroit	1,083	425	39.2	42	9.9
48207	Detroit	1,326	561	42.3	42	7.5
48126	Dearborn	5,545	1526	27.5	40	2.6
49506	Grand Rapids	2,563	434	16.9	37	8.5
49441	Muskegon	2,587	486	18.8	37	7.6
49423	Holland	3,733	729	19.5	37	5.1
48911	Lansing	3,773	1257	33.3	35	2.8
48335	Farmington	1,628	475	29.2	34	7.2
49444	Muskegon	2,571	546	21.2	33	6.0
48906	Lansing	2,458	679	27.6	32	4.7
49201	Jackson	2,651	693	26.1	32	4.6
48503	Flint	2,111	502	23.8	31	6.2
48504	Flint	2,733	672	24.6	31	4.6
49022	Benton Harbor	3,136	773	24.6	31	4.0
48223	Detroit	2,141	752	35.1	30	4.0
48708	Bay City	2,246	472	21.0	29	6.1

**Table 4: Children under Age Six Tested for Lead Poisoning 2014:
Blood Lead Level (BLL) Results by ZIP Code, Sorted by Number of Children w/BLL \geq 5 μ g/dL**

ZIP	Post Office Name	Children less than Six Years of Age	Children Tested		Children with Elevated Blood Lead Levels*	
			Number of Children Tested	% Tested	Number BLL \geq 5 μ g/dL, Venous & Capillary	% BLL \geq 5 μ g/dL, Venous & Capillary
49001	Kalamazoo	2,232	515	23.1	29	5.6
49505	Grand Rapids	2,933	581	19.8	29	5.0
49202	Jackson	1,986	536	27.0	28	5.2
48505	Flint	2,419	604	25.0	28	4.6
49508	Grand Rapids	3,459	838	24.2	28	3.3
48208	Detroit	854	301	35.2	24	8.0
48867	Owosso	2,012	616	30.6	24	3.9
48180	Taylor	5,287	1450	27.4	24	1.7
49017	Battle Creek	1,430	353	24.7	22	6.2
49014	Battle Creek	1,652	419	25.4	22	5.3
49007	Kalamazoo	838	245	29.2	21	8.6
49424	Holland	4,073	705	17.3	21	3.0
48185	Westland	3,395	791	23.3	20	2.5
49037	Battle Creek	2,157	612	28.4	19	3.1
48910	Lansing	3,059	827	27.0	19	2.3
49036	Coldwater	1,739	374	21.5	18	4.8
48506	Flint	2,604	550	21.1	18	3.3
49431	Ludington	1,208	256	21.2	17	6.6
48915	Lansing	889	309	34.8	17	5.5
49093	Three Rivers	1,480	340	23.0	17	5.0
48507	Flint	2,913	764	26.2	17	2.2
48146	Lincoln Park	3,089	942	30.5	17	1.8
48706	Bay City	2,707	546	20.2	16	2.9
48091	Warren	2,642	634	24.0	16	2.5
48089	Warren	2,861	681	23.8	16	2.3
49548	Grand Rapids	2,898	750	25.9	16	2.1
48846	Ionia	1,373	317	23.1	15	4.7
48201	Detroit	666	389	58.4	15	3.9
49224	Albion	1,065	153	14.4	14	9.2
49509	Grand Rapids	2,864	726	25.3	14	1.9
49247	Hudson	405	85	21.0	13	15.3
48216	Detroit	506	131	25.9	13	9.9
48193	Riverview	943	235	24.9	13	5.5
48341	Pontiac	1,267	318	25.1	13	4.1
48917	Lansing	2,040	409	20.0	13	3.2
49519	Grand Rapids	2,553	480	18.8	13	2.7
48021	Eastpointe	2,569	536	20.9	13	2.4
48912	Lansing	1,219	301	24.7	12	4.0
48446	Lapeer	1,938	360	18.6	12	3.3
49417	Grand Haven	2,175	441	20.3	12	2.7
49015	Battle Creek	2,230	519	23.3	12	2.3
48310	Sterling Heights	3,062	667	21.8	12	1.8
49858	Menominee	703	140	19.9	11	7.9
49010	Allegan	1,339	258	19.3	11	4.3

**Table 4: Children under Age Six Tested for Lead Poisoning 2014:
Blood Lead Level (BLL) Results by ZIP Code, Sorted by Number of Children w/BLL \geq 5 ug/dL**

ZIP	Post Office Name	Children less than Six Years of Age	Children Tested		Children with Elevated Blood Lead Levels*	
			Number of Children Tested	% Tested	Number BLL \geq 5 μ g/dL, Venous & Capillary	% BLL \geq 5 μ g/dL, Venous & Capillary
49048	Kalamazoo	2,350	535	22.8	11	2.1
49058	Hastings	1,432	163	11.4	10	6.1
49829	Escanaba	1,228	236	19.2	10	4.2
48218	Detroit	752	274	36.4	10	3.6
48030	Hazel Park	1,280	285	22.3	10	3.5
48342	Pontiac	1,854	539	29.1	10	1.9
48197	Ypsilanti	5,049	686	13.6	10	1.5
48141	Inkster	2,226	743	33.4	10	1.3
49073	Nashville	383	51	13.3	9	17.6
49913	Calumet	603	142	23.5	9	6.3
48229	Ecorse	831	283	34.1	9	3.2
49242	Hillsdale	1,032	289	28.0	9	3.1
48430	Fenton	2,532	319	12.6	9	2.8
48823	East Lansing	2,121	348	16.4	9	2.6
49091	Sturgis	1,880	370	19.7	9	2.4
48187	Canton	3,703	438	11.8	9	2.1
48183	Trenton	2,717	505	18.6	9	1.8
48186	Westland	2,943	558	19.0	9	1.6
49684	Traverse City	2,634	599	22.7	9	1.5
48066	Roseville	3,565	634	17.8	9	1.4
48239	Redford	2,707	657	24.3	9	1.4
48127	Dearborn Hts	2,999	748	24.9	9	1.2
49079	Paw Paw	1,056	109	10.3	8	7.3
48444	Imlay City	731	145	19.8	8	5.5
49068	Marshall	972	157	16.2	8	5.1
49707	Alpena	1,376	204	14.8	8	3.9
48532	Flint	1,322	393	29.7	8	2.0
49546	Grand Rapids	2,165	418	19.3	8	1.9
48188	Canton	3,692	433	11.7	8	1.8
49256	Morenci	318	55	17.3	7	12.7
49660	Manistee	740	165	22.3	7	4.2
48220	Ferndale	1,469	259	17.6	7	2.7
48092	Warren	1,645	348	21.2	7	2.0
48423	Davison	2,349	398	16.9	7	1.8
48858	Mount Pleasant	2,693	419	15.6	7	1.7
48071	Madison Heights	2,166	429	19.8	7	1.6
49120	Niles	2,812	487	17.3	7	1.4
48340	Pontiac	2,845	774	27.2	7	0.9
49454	Scottville	325	79	24.3	6	7.6
48429	Durand	581	115	19.8	6	5.2
49677	Reed City	473	115	24.3	6	5.2
49849	Ishpeming	921	118	12.8	6	5.1
48084	Troy	1,055	137	13.0	6	4.4
49090	South Haven	954	154	16.1	6	3.9

**Table 4: Children under Age Six Tested for Lead Poisoning 2014:
Blood Lead Level (BLL) Results by ZIP Code, Sorted by Number of Children w/BLL ≥ 5 ug/dL**

ZIP	Post Office Name	Children less than Six Years of Age	Children Tested		Children with Elevated Blood Lead Levels*	
			Number of Children Tested	% Tested	Number BLL ≥ 5 µg/dL, Venous & Capillary	% BLL ≥ 5 µg/dL, Venous & Capillary
48217	Detroit	643	177	27.5	6	3.4
49420	Hart	571	188	32.9	6	3.2
48638	Saginaw	805	208	25.8	6	2.9
48813	Charlotte	1,515	216	14.3	6	2.8
48108	Ann Arbor	2,009	222	11.1	6	2.7
48329	Waterford	1,737	232	13.4	6	2.6
48083	Troy	1,706	256	15.0	6	2.3
48150	Livonia	1,770	265	15.0	6	2.3
48393	Wixom	1,346	306	22.7	6	2.0
48195	Southgate	1,789	447	25.0	6	1.3
48439	Grand Blanc	3,877	522	13.5	6	1.1
48237	Oak Park	2,214	600	27.1	6	1.0

*Reflects each child's highest venous result, or if no venous, then highest capillary result

Note: This table includes only ZIP Codes with 6 or more children with BLLs ≥ 5 ug/dL

January 29, 2016

Sources: US Census Bureau, Census 2010 (ZIP Populations)

MDCH Data Warehouse (children tested and elevated levels)

**Table 5: Children under Age Six Tested for Lead Poisoning 2014:
Blood Lead Level (BLL) Results by ZIP Code, Sorted by Percentage of Children w/BLL \geq 5 ug/dL**

ZIP	Post Office Name	Children less than Six Years of Age	Children Tested		Children with Elevated Blood Lead Levels*	
			Number of Children Tested	% Tested	Number BLL \geq 5 μ g/dL, Venous & Capillary	% BLL \geq 5 μ g/dL, Venous & Capillary
48206	Detroit	1,665	644	38.7	136	21.1
48211	Detroit/Hamtramck	694	252	36.3	47	18.7
49073	Nashville	383	51	13.3	9	17.6
48214	Detroit	1,516	613	40.4	107	17.5
48204	Detroit	2,271	801	35.3	131	16.4
48202	Detroit	955	391	40.9	60	15.3
49247	Hudson	405	85	21.0	13	15.3
48213	Detroit	2,368	808	34.1	108	13.4
48238	Detroit	2,584	995	38.5	128	12.9
48203	Detroit/Highland Park	2,195	734	33.4	95	12.9
49256	Morenci	318	55	17.3	7	12.7
49221	Adrian	2,982	638	21.4	76	11.9
49507	Grand Rapids	4,361	1309	30.0	144	11.0
48205	Detroit	4,233	1540	36.4	164	10.6
48215	Detroit	1,083	425	39.2	42	9.9
48216	Detroit	506	131	25.9	13	9.9
49504	Grand Rapids	3,696	812	22.0	76	9.4
49224	Albion	1,065	153	14.4	14	9.2
49442	Muskegon	3,726	814	21.8	73	9.0
48210	Detroit	3,933	1559	39.6	138	8.9
48224	Detroit	4,024	1591	39.5	139	8.7
49007	Kalamazoo	838	245	29.2	21	8.6
48212	Detroit/Hamtramck	4,007	1584	39.5	134	8.5
49203	Jackson	3,407	858	25.2	73	8.5
49506	Grand Rapids	2,563	434	16.9	37	8.5
48209	Detroit	4,220	1497	35.5	124	8.3
48208	Detroit	854	301	35.2	24	8.0
49858	Menominee	703	140	19.9	11	7.9
49441	Muskegon	2,587	486	18.8	37	7.6
49454	Scottville	325	79	24.3	6	7.6
49503	Grand Rapids	3,180	829	26.1	62	7.5
48207	Detroit	1,326	561	42.3	42	7.5
49079	Paw Paw	1,056	109	10.3	8	7.3
48227	Detroit	3,524	1432	40.6	103	7.2
48335	Farmington	1,628	475	29.2	34	7.2
48602	Saginaw	2,819	776	27.5	52	6.7
49431	Ludington	1,208	256	21.2	17	6.6
48221	Detroit	2,476	942	38.0	60	6.4
49913	Calumet	603	142	23.5	9	6.3
48503	Flint	2,111	502	23.8	31	6.2
49017	Battle Creek	1,430	353	24.7	22	6.2
48708	Bay City	2,246	472	21.0	29	6.1
49058	Hastings	1,432	163	11.4	10	6.1
49444	Muskegon	2,571	546	21.2	33	6.0

**Table 5: Children under Age Six Tested for Lead Poisoning 2014:
Blood Lead Level (BLL) Results by ZIP Code, Sorted by Percentage of Children w/BLL \geq 5 ug/dL**

ZIP	Post Office Name	Children less than Six Years of Age	Children Tested		Children with Elevated Blood Lead Levels*	
			Number of Children Tested	% Tested	Number BLL \geq 5 μ g/dL, Venous & Capillary	% BLL \geq 5 μ g/dL, Venous & Capillary
48234	Detroit	3,005	1124	37.4	64	5.7
49001	Kalamazoo	2,232	515	23.1	29	5.6
48915	Lansing	889	309	34.8	17	5.5
48193	Riverview	943	235	24.9	13	5.5
48444	Imlay City	731	145	19.8	8	5.5
49014	Battle Creek	1,652	419	25.4	22	5.3
49202	Jackson	1,986	536	27.0	28	5.2
48429	Durand	581	115	19.8	6	5.2
49677	Reed City	473	115	24.3	6	5.2
49423	Holland	3,733	729	19.5	37	5.1
49068	Marshall	972	157	16.2	8	5.1
49849	Ishpeming	921	118	12.8	6	5.1
49505	Grand Rapids	2,933	581	19.8	29	5.0
49093	Three Rivers	1,480	340	23.0	17	5.0
49036	Coldwater	1,739	374	21.5	18	4.8
48906	Lansing	2,458	679	27.6	32	4.7
48846	Ionia	1,373	317	23.1	15	4.7
49201	Jackson	2,651	693	26.1	32	4.6
48504	Flint	2,733	672	24.6	31	4.6
48505	Flint	2,419	604	25.0	28	4.6
48228	Detroit	5,037	2070	41.1	93	4.5
48084	Troy	1,055	137	13.0	6	4.4
48060	Port Huron	3,627	1291	35.6	56	4.3
49010	Allegan	1,339	258	19.3	11	4.3
49829	Escanaba	1,228	236	19.2	10	4.2
49660	Manistee	740	165	22.3	7	4.2
48601	Saginaw	3,543	1184	33.4	49	4.1
48341	Pontiac	1,267	318	25.1	13	4.1
49022	Benton Harbor	3,136	773	24.6	31	4.0
48223	Detroit	2,141	752	35.1	30	4.0
48912	Lansing	1,219	301	24.7	12	4.0
48867	Owosso	2,012	616	30.6	24	3.9
48201	Detroit	666	389	58.4	15	3.9
49707	Alpena	1,376	204	14.8	8	3.9
49090	South Haven	954	154	16.1	6	3.9
48219	Detroit	3,543	1524	43.0	56	3.7
48218	Detroit	752	274	36.4	10	3.6
48030	Hazel Park	1,280	285	22.3	10	3.5
48235	Detroit	3,103	1255	40.4	43	3.4
48217	Detroit	643	177	27.5	6	3.4
49508	Grand Rapids	3,459	838	24.2	28	3.3
48506	Flint	2,604	550	21.1	18	3.3
48446	Lapeer	1,938	360	18.6	12	3.3
48917	Lansing	2,040	409	20.0	13	3.2

**Table 5: Children under Age Six Tested for Lead Poisoning 2014:
Blood Lead Level (BLL) Results by ZIP Code, Sorted by Percentage of Children w/BLL \geq 5 ug/dL**

ZIP	Post Office Name	Children less than Six Years of Age	Children Tested		Children with Elevated Blood Lead Levels*	
			Number of Children Tested	% Tested	Number BLL \geq 5 μ g/dL, Venous & Capillary	% BLL \geq 5 μ g/dL, Venous & Capillary
48229	Ecorse	831	283	34.1	9	3.2
49420	Hart	571	188	32.9	6	3.2
49037	Battle Creek	2,157	612	28.4	19	3.1
49242	Hillsdale	1,032	289	28.0	9	3.1
49424	Holland	4,073	705	17.3	21	3.0
48706	Bay City	2,707	546	20.2	16	2.9
48638	Saginaw	805	208	25.8	6	2.9
48911	Lansing	3,773	1257	33.3	35	2.8
48430	Fenton	2,532	319	12.6	9	2.8
48813	Charlotte	1,515	216	14.3	6	2.8
49519	Grand Rapids	2,553	480	18.8	13	2.7
49417	Grand Haven	2,175	441	20.3	12	2.7
48220	Ferndale	1,469	259	17.6	7	2.7
48108	Ann Arbor	2,009	222	11.1	6	2.7
48126	Dearborn	5,545	1526	27.5	40	2.6
48823	East Lansing	2,121	348	16.4	9	2.6
48329	Waterford	1,737	232	13.4	6	2.6
48185	Westland	3,395	791	23.3	20	2.5
48091	Warren	2,642	634	24.0	16	2.5
48021	Eastpointe	2,569	536	20.9	13	2.4
49091	Sturgis	1,880	370	19.7	9	2.4
48910	Lansing	3,059	827	27.0	19	2.3
48089	Warren	2,861	681	23.8	16	2.3
49015	Battle Creek	2,230	519	23.3	12	2.3
48083	Troy	1,706	256	15.0	6	2.3
48150	Livonia	1,770	265	15.0	6	2.3
48507	Flint	2,913	764	26.2	17	2.2
49548	Grand Rapids	2,898	750	25.9	16	2.1
49048	Kalamazoo	2,350	535	22.8	11	2.1
48187	Canton	3,703	438	11.8	9	2.1
48532	Flint	1,322	393	29.7	8	2.0
48092	Warren	1,645	348	21.2	7	2.0
48393	Wixom	1,346	306	22.7	6	2.0
49509	Grand Rapids	2,864	726	25.3	14	1.9
48342	Pontiac	1,854	539	29.1	10	1.9
49546	Grand Rapids	2,165	418	19.3	8	1.9
48146	Lincoln Park	3,089	942	30.5	17	1.8
48310	Sterling Heights	3,062	667	21.8	12	1.8
48183	Trenton	2,717	505	18.6	9	1.8
48188	Canton	3,692	433	11.7	8	1.8
48423	Davison	2,349	398	16.9	7	1.8
48180	Taylor	5,287	1450	27.4	24	1.7
48858	Mount Pleasant	2,693	419	15.6	7	1.7
48186	Westland	2,943	558	19.0	9	1.6

**Table 5: Children under Age Six Tested for Lead Poisoning 2014:
Blood Lead Level (BLL) Results by ZIP Code, Sorted by Percentage of Children w/BLL ≥ 5 ug/dL**

ZIP	Post Office Name	Children less than Six Years of Age	Children Tested		Children with Elevated Blood Lead Levels*	
			Number of Children Tested	% Tested	Number BLL ≥ 5 µg/dL, Venous & Capillary	% BLL ≥ 5 ug/dL, Venous & Capillary
48071	Madison Heights	2,166	429	19.8	7	1.6
48197	Ypsilanti	5,049	686	13.6	10	1.5
49684	Traverse City	2,634	599	22.7	9	1.5
48066	Roseville	3,565	634	17.8	9	1.4
48239	Redford	2,707	657	24.3	9	1.4
49120	Niles	2,812	487	17.3	7	1.4
48141	Inkster	2,226	743	33.4	10	1.3
48195	Southgate	1,789	447	25.0	6	1.3
48127	Dearborn Hts	2,999	748	24.9	9	1.2
48439	Grand Blanc	3,877	522	13.5	6	1.1
48237	Oak Park	2,214	600	27.1	6	1.0
48340	Pontiac	2,845	774	27.2	7	0.9

*Reflects each child's highest venous result, or if no venous, then highest capillary result
 Note: This table includes only ZIP Codes with 6 or more children with BLLs ≥ 5 ug/dL

January 29, 2016

Sources: US Census Bureau, Census 2010 (ZIP Populations)

MDCH Data Warehouse (children tested and elevated levels)

**Table 6: Children under Age Six Tested for Lead Poisoning 2014:
Blood Lead Level (BLL) Results by ZIP Code**

ZIP	Children less than Six Years of Age	Children Tested		Children with Elevated Blood Lead Levels*	
		Number of Children Tested	% Tested	Number BLL \geq 5 μ g/dL, Venous & Capillary	% BLL \geq 5 μ g/dL, Venous & Capillary
48001	660	145	22.0	<6	---
48002	219	19	8.7	<6	---
48003	388	42	10.8	<6	---
48005	294	39	13.3	<6	---
48006	295	45	15.3	<6	---
48009	1,586	253	16.0	<6	---
48014	321	69	21.5	<6	---
48015	516	108	20.9	<6	---
48017	761	123	16.2	<6	---
48021	2,569	536	20.9	13	2.4
48022	174	23	13.2	<6	---
48023	330	53	16.1	<6	---
48025	907	124	13.7	<6	---
48026	811	171	21.1	<6	---
48027	213	50	23.5	<6	---
48028	26	<6	---	<6	---
48030	1,280	285	22.3	10	3.5
48032	156	26	16.7	<6	---
48033	821	276	33.6	<6	---
48034	809	258	31.9	<6	---
48035	2,662	416	15.6	<6	---
48036	1,465	268	18.3	<6	---
48038	2,497	374	15.0	<6	---
48039	464	101	21.8	<6	---
48040	675	101	15.0	<6	---
48041	270	42	15.6	<6	---
48042	2,366	221	9.3	<6	---
48043	1,180	158	13.4	<6	---
48044	4,252	434	10.2	<6	---
48045	1,392	197	14.2	<6	---
48047	3,062	367	12.0	<6	---
48048	767	84	11.0	<6	---
48049	335	64	19.1	<6	---
48050	80	11	13.8	<6	---
48051	1,208	165	13.7	<6	---
48054	369	58	15.7	<6	---
48059	976	182	18.6	<6	---
48060	3,627	1291	35.6	56	4.3
48062	654	87	13.3	<6	---
48063	258	44	17.1	<6	---
48064	256	40	15.6	<6	---
48065	661	80	12.1	<6	---
48066	3,565	634	17.8	9	1.4
48067	1,647	221	13.4	<6	---
48069	179	24	13.4	<6	---
48070	512	60	11.7	<6	---
48071	2,166	429	19.8	7	1.6
48072	1,147	173	15.1	<6	---
48073	2,178	327	15.0	<6	---
48074	688	176	25.6	<6	---

**Table 6: Children under Age Six Tested for Lead Poisoning 2014:
Blood Lead Level (BLL) Results by ZIP Code**

ZIP	Children less than Six Years of Age	Children Tested		Children with Elevated Blood Lead Levels*	
		Number of Children Tested	% Tested	Number BLL \geq 5 μ g/dL, Venous & Capillary	% BLL \geq 5 μ g/dL, Venous & Capillary
48075	1,302	442	33.9	<6	---
48076	1,390	387	27.8	<6	---
48079	756	122	16.1	<6	---
48080	1,365	195	14.3	<6	---
48081	1,123	185	16.5	<6	---
48082	1,038	118	11.4	<6	---
48083	1,706	256	15.0	6	2.3
48084	1,055	137	13.0	6	4.4
48085	1,489	189	12.7	<6	---
48088	1,359	216	15.9	<6	---
48089	2,861	681	23.8	16	2.3
48091	2,642	634	24.0	16	2.5
48092	1,645	348	21.2	7	2.0
48093	1,363	273	20.0	<6	---
48094	1,386	130	9.4	<6	---
48095	263	31	11.8	<6	---
48096	193	17	8.8	<6	---
48097	385	92	23.9	<6	---
48098	919	124	13.5	<6	---
48101	1,725	329	19.1	<6	---
48103	3,584	320	8.9	<6	---
48104	1,281	112	8.7	<6	---
48105	2,014	171	8.5	<6	---
48108	2,009	222	11.1	6	2.7
48111	3,276	592	18.1	<6	---
48114	1,142	100	8.8	<6	---
48116	1,640	105	6.4	<6	---
48117	610	73	12.0	<6	---
48118	729	72	9.9	<6	---
48120	986	329	33.4	<6	---
48122	875	301	34.4	<6	---
48124	2,197	345	15.7	<6	---
48125	1,596	381	23.9	<6	---
48126	5,545	1526	27.5	40	2.6
48127	2,999	748	24.9	9	1.2
48128	822	153	18.6	<6	---
48130	1,138	77	6.8	<6	---
48131	524	82	15.6	<6	---
48133	372	57	15.3	<6	---
48134	1,773	308	17.4	<6	---
48135	1,813	307	16.9	<6	---
48137	299	18	6.0	<6	---
48138	421	69	16.4	<6	---
48139	7	<6	---	<6	---
48140	174	29	16.7	<6	---
48141	2,226	743	33.4	10	1.3
48143	3	<6	---	<6	---
48144	562	68	12.1	<6	---
48145	209	36	17.2	<6	---
48146	3,089	942	30.5	17	1.8

**Table 6: Children under Age Six Tested for Lead Poisoning 2014:
Blood Lead Level (BLL) Results by ZIP Code**

ZIP	Children less than Six Years of Age	Children Tested		Children with Elevated Blood Lead Levels*	
		Number of Children Tested	% Tested	Number BLL \geq 5 μ g/dL, Venous & Capillary	% BLL \geq 5 μ g/dL, Venous & Capillary
48150	1,770	265	15.0	6	2.3
48152	1,686	349	20.7	<6	---
48154	1,865	315	16.9	<6	---
48157	109	15	13.8	<6	---
48158	401	39	9.7	<6	---
48159	189	23	12.2	<6	---
48160	911	89	9.8	<6	---
48161	2,040	373	18.3	<6	---
48162	2,211	329	14.9	<6	---
48164	545	77	14.1	<6	---
48165	520	89	17.1	<6	---
48166	968	151	15.6	<6	---
48167	1,240	184	14.8	<6	---
48168	1,566	154	9.8	<6	---
48169	1,258	104	8.3	<6	---
48170	2,512	201	8.0	<6	---
48173	913	103	11.3	<6	---
48174	2,538	602	23.7	<6	---
48176	1,298	95	7.3	<6	---
48178	2,225	311	14.0	<6	---
48179	191	35	18.3	<6	---
48180	5,287	1450	27.4	24	1.7
48182	1,358	180	13.3	<6	---
48183	2,717	505	18.6	9	1.8
48184	1,249	272	21.8	<6	---
48185	3,395	791	23.3	20	2.5
48186	2,943	558	19.0	9	1.6
48187	3,703	438	11.8	9	2.1
48188	3,692	433	11.7	8	1.8
48189	966	91	9.4	<6	---
48190	5	<6	---	<6	---
48191	290	24	8.3	<6	---
48192	1,683	360	21.4	<6	---
48193	943	235	24.9	13	5.5
48195	1,789	447	25.0	6	1.3
48197	5,049	686	13.6	10	1.5
48198	3,614	643	17.8	<6	---
48201	666	389	58.4	15	3.9
48202	955	391	40.9	60	15.3
48203	2,195	734	33.4	95	12.9
48204	2,271	801	35.3	131	16.4
48205	4,233	1540	36.4	164	10.6
48206	1,665	644	38.7	136	21.1
48207	1,326	561	42.3	42	7.5
48208	854	301	35.2	24	8.0
48209	4,220	1497	35.5	124	8.3
48210	3,933	1559	39.6	138	8.9
48211	694	252	36.3	47	18.7
48212	4,007	1584	39.5	134	8.5
48213	2,368	808	34.1	108	13.4

**Table 6: Children under Age Six Tested for Lead Poisoning 2014:
Blood Lead Level (BLL) Results by ZIP Code**

ZIP	Children less than Six Years of Age	Children Tested		Children with Elevated Blood Lead Levels*	
		Number of Children Tested	% Tested	Number BLL \geq 5 μ g/dL, Venous & Capillary	% BLL \geq 5 μ g/dL, Venous & Capillary
48214	1,516	613	40.4	107	17.5
48215	1,083	425	39.2	42	9.9
48216	506	131	25.9	13	9.9
48217	643	177	27.5	6	3.4
48218	752	274	36.4	10	3.6
48219	3,543	1524	43.0	56	3.7
48220	1,469	259	17.6	7	2.7
48221	2,476	942	38.0	60	6.4
48223	2,141	752	35.1	30	4.0
48224	4,024	1591	39.5	139	8.7
48225	1,086	267	24.6	<6	---
48226	113	43	38.1	<6	---
48227	3,524	1432	40.6	103	7.2
48228	5,037	2070	41.1	93	4.5
48229	831	283	34.1	9	3.2
48230	977	146	14.9	<6	---
48234	3,005	1124	37.4	64	5.7
48235	3,103	1255	40.4	43	3.4
48236	1,836	261	14.2	<6	---
48237	2,214	600	27.1	6	1.0
48238	2,584	995	38.5	128	12.9
48239	2,707	657	24.3	9	1.4
48240	1,345	384	28.6	<6	---
48301	773	97	12.5	<6	---
48302	703	91	12.9	<6	---
48304	714	101	14.1	<6	---
48306	1,671	132	7.9	<6	---
48307	3,184	343	10.8	<6	---
48309	1,728	149	8.6	<6	---
48310	3,062	667	21.8	12	1.8
48312	2,125	364	17.1	<6	---
48313	2,168	363	16.7	<6	---
48314	1,250	222	17.8	<6	---
48315	1,400	156	11.1	<6	---
48316	1,578	209	13.2	<6	---
48317	2,167	341	15.7	<6	---
48320	382	41	10.7	<6	---
48322	1,837	298	16.2	<6	---
48323	932	137	14.7	<6	---
48324	1,121	124	11.1	<6	---
48326	1,623	259	16.0	<6	---
48327	1,699	246	14.5	<6	---
48328	2,051	316	15.4	<6	---
48329	1,737	232	13.4	6	2.6
48331	1,188	199	16.8	<6	---
48334	1,064	190	17.9	<6	---
48335	1,628	475	29.2	34	7.2
48336	1,720	374	21.7	<6	---
48340	2,845	774	27.2	7	0.9
48341	1,267	318	25.1	13	4.1

**Table 6: Children under Age Six Tested for Lead Poisoning 2014:
Blood Lead Level (BLL) Results by ZIP Code**

ZIP	Children less than Six Years of Age	Children Tested		Children with Elevated Blood Lead Levels*	
		Number of Children Tested	% Tested	Number BLL \geq 5 μ g/dL, Venous & Capillary	% BLL \geq 5 μ g/dL, Venous & Capillary
48342	1,854	539	29.1	10	1.9
48346	1,505	233	15.5	<6	---
48348	1,560	232	14.9	<6	---
48350	430	75	17.4	<6	---
48353	427	26	6.1	<6	---
48356	509	51	10.0	<6	---
48357	535	56	10.5	<6	---
48359	730	96	13.2	<6	---
48360	878	96	10.9	<6	---
48362	1,096	121	11.0	<6	---
48363	259	41	15.8	<6	---
48367	282	31	11.0	<6	---
48370	68	7	10.3	<6	---
48371	1,883	178	9.5	<6	---
48374	966	211	21.8	<6	---
48375	1,507	291	19.3	<6	---
48377	1,257	292	23.2	<6	---
48380	484	32	6.6	<6	---
48381	816	107	13.1	<6	---
48382	1,599	194	12.1	<6	---
48383	939	133	14.2	<6	---
48386	1,069	150	14.0	<6	---
48390	1,512	262	17.3	<6	---
48393	1,346	306	22.7	6	2.0
48401	92	13	14.1	<6	---
48412	346	64	18.5	<6	---
48413	520	115	22.1	<6	---
48414	153	29	19.0	<6	---
48415	612	170	27.8	<6	---
48416	383	59	15.4	<6	---
48417	193	48	24.9	<6	---
48418	307	49	16.0	<6	---
48419	190	31	16.3	<6	---
48420	1,488	307	20.6	<6	---
48421	394	72	18.3	<6	---
48422	465	93	20.0	<6	---
48423	2,349	398	16.9	7	1.8
48426	83	9	10.8	<6	---
48427	203	30	14.8	<6	---
48428	277	22	7.9	<6	---
48429	581	115	19.8	6	5.2
48430	2,532	319	12.6	9	2.8
48432	33	15	45.5	<6	---
48433	1,657	299	18.0	<6	---
48434	4	<6	---	<6	---
48435	159	30	18.9	<6	---
48436	233	45	19.3	<6	---
48437	31	<6	---	<6	---
48438	401	59	14.7	<6	---
48439	3,877	522	13.5	6	1.1

**Table 6: Children under Age Six Tested for Lead Poisoning 2014:
Blood Lead Level (BLL) Results by ZIP Code**

ZIP	Children less than Six Years of Age	Children Tested		Children with Elevated Blood Lead Levels*	
		Number of Children Tested	% Tested	Number BLL \geq 5 μ g/dL, Venous & Capillary	% BLL \geq 5 μ g/dL, Venous & Capillary
48440	15	<6	---	<6	---
48441	252	42	16.7	<6	---
48442	1,529	211	13.8	<6	---
48444	731	145	19.8	8	5.5
48445	90	13	14.4	<6	---
48446	1,938	360	18.6	12	3.3
48449	206	44	21.4	<6	---
48450	229	44	19.2	<6	---
48451	1,105	125	11.3	<6	---
48453	393	74	18.8	<6	---
48454	88	23	26.1	<6	---
48455	443	40	9.0	<6	---
48456	65	12	18.5	<6	---
48457	551	142	25.8	<6	---
48458	1,640	353	21.5	<6	---
48460	146	38	26.0	<6	---
48461	635	93	14.6	<6	---
48462	765	103	13.5	<6	---
48463	250	35	14.0	<6	---
48464	124	21	16.9	<6	---
48465	41	<6	---	<6	---
48466	103	21	20.4	<6	---
48467	95	15	15.8	<6	---
48468	58	7	12.1	<6	---
48469	65	7	10.8	<6	---
48470	53	<6	---	<6	---
48471	389	82	21.1	<6	---
48472	156	24	15.4	<6	---
48473	1,482	299	20.2	<6	---
48475	185	19	10.3	<6	---
48476	35	10	28.6	<6	---
48502	25	10	40.0	<6	---
48503	2,111	502	23.8	31	6.2
48504	2,733	672	24.6	31	4.6
48505	2,419	604	25.0	28	4.6
48506	2,604	550	21.1	18	3.3
48507	2,913	764	26.2	17	2.2
48509	551	111	20.1	<6	---
48519	490	126	25.7	<6	---
48529	908	251	27.6	<6	---
48532	1,322	393	29.7	8	2.0
48601	3,543	1184	33.4	49	4.1
48602	2,819	776	27.5	52	6.7
48603	1,627	372	22.9	<6	---
48604	675	149	22.1	<6	---
48607	85	30	35.3	<6	---
48609	634	120	18.9	<6	---
48610	138	25	18.1	<6	---
48611	460	49	10.7	<6	---
48612	528	118	22.3	<6	---

**Table 6: Children under Age Six Tested for Lead Poisoning 2014:
Blood Lead Level (BLL) Results by ZIP Code**

ZIP	Children less than Six Years of Age	Children Tested		Children with Elevated Blood Lead Levels*	
		Number of Children Tested	% Tested	Number BLL \geq 5 μ g/dL, Venous & Capillary	% BLL \geq 5 μ g/dL, Venous & Capillary
48613	93	13	14.0	<6	---
48614	113	18	15.9	<6	---
48615	236	38	16.1	<6	---
48616	521	110	21.1	<6	---
48617	778	136	17.5	<6	---
48618	358	43	12.0	<6	---
48619	17	<6	---	<6	---
48620	*	<6	---	<6	---
48621	78	10	12.8	<6	---
48622	437	81	18.5	<6	---
48623	935	138	14.8	<6	---
48624	959	162	16.9	<6	---
48625	809	208	25.7	<6	---
48626	333	57	17.1	<6	---
48627	6	<6	---	<6	---
48628	106	7	6.6	<6	---
48629	380	79	20.8	<6	---
48630	2	<6	---	<6	---
48631	284	43	15.1	<6	---
48632	301	57	18.9	<6	---
48633	4	<6	---	<6	---
48634	256	31	12.1	<6	---
48635	70	<6	---	<6	---
48636	42	<6	---	<6	---
48637	213	41	19.2	<6	---
48638	805	208	25.8	6	2.9
48640	2,199	170	7.7	<6	---
48642	2,359	191	8.1	<6	---
48647	335	16	4.8	<6	---
48649	81	30	37.0	<6	---
48650	475	70	14.7	<6	---
48651	220	51	23.2	<6	---
48652	86	12	14.0	<6	---
48653	520	60	11.5	<6	---
48654	127	8	6.3	<6	---
48655	419	97	23.2	<6	---
48656	170	35	20.6	<6	---
48657	449	40	8.9	<6	---
48658	350	59	16.9	<6	---
48659	197	44	22.3	<6	---
48661	659	59	9.0	<6	---
48662	103	12	11.7	<6	---
48701	131	31	23.7	<6	---
48703	151	29	19.2	<6	---
48705	12	<6	---	<6	---
48706	2,707	546	20.2	16	2.9
48708	2,246	472	21.0	29	6.1
48720	40	11	27.5	<6	---
48721	17	<6	---	<6	---
48722	214	42	19.6	<6	---

**Table 6: Children under Age Six Tested for Lead Poisoning 2014:
Blood Lead Level (BLL) Results by ZIP Code**

ZIP	Children less than Six Years of Age	Children Tested		Children with Elevated Blood Lead Levels*	
		Number of Children Tested	% Tested	Number BLL \geq 5 μ g/dL, Venous & Capillary	% BLL \geq 5 μ g/dL, Venous & Capillary
48723	809	238	29.4	<6	---
48724	26	10	38.5	<6	---
48725	105	24	22.9	<6	---
48726	474	90	19.0	<6	---
48727	84	15	17.9	<6	---
48728	7	<6	---	<6	---
48729	111	17	15.3	<6	---
48730	212	17	8.0	<6	---
48731	125	24	19.2	<6	---
48732	700	140	20.0	<6	---
48733	120	26	21.7	<6	---
48734	396	44	11.1	<6	---
48735	88	16	18.2	<6	---
48737	38	<6	---	<6	---
48738	47	<6	---	<6	---
48739	173	12	6.9	<6	---
48740	109	13	11.9	<6	---
48741	152	35	23.0	<6	---
48742	55	9	16.4	<6	---
48743	1	<6	---	<6	---
48744	291	63	21.6	<6	---
48745	51	11	21.6	<6	---
48746	532	115	21.6	<6	---
48747	94	22	23.4	<6	---
48748	66	8	12.1	<6	---
48749	57	18	31.6	<6	---
48750	475	77	16.2	<6	---
48754	62	22	35.5	<6	---
48755	153	30	19.6	<6	---
48756	322	21	6.5	<6	---
48757	239	60	25.1	<6	---
48759	209	47	22.5	<6	---
48760	119	18	15.1	<6	---
48761	27	<6	---	<6	---
48762	39	<6	---	<6	---
48763	232	22	9.5	<6	---
48765	34	8	23.5	<6	---
48766	64	17	26.6	<6	---
48767	151	24	15.9	<6	---
48768	634	150	23.7	<6	---
48770	99	7	7.1	<6	---
48801	965	177	18.3	<6	---
48804	*	<6	---	<6	---
48806	95	23	24.2	<6	---
48807	61	6	9.8	<6	---
48808	391	45	11.5	<6	---
48809	862	165	19.1	<6	---
48811	290	52	17.9	<6	---
48813	1,515	216	14.3	6	2.8
48815	210	28	13.3	<6	---

**Table 6: Children under Age Six Tested for Lead Poisoning 2014:
Blood Lead Level (BLL) Results by ZIP Code**

ZIP	Children less than Six Years of Age	Children Tested		Children with Elevated Blood Lead Levels*	
		Number of Children Tested	% Tested	Number BLL \geq 5 μ g/dL, Venous & Capillary	% BLL \geq 5 μ g/dL, Venous & Capillary
48817	442	116	26.2	<6	---
48818	180	25	13.9	<6	---
48819	207	24	11.6	<6	---
48820	1,215	97	8.0	<6	---
48821	268	35	13.1	<6	---
48822	152	12	7.9	<6	---
48823	2,121	348	16.4	9	2.6
48827	1,134	142	12.5	<6	---
48829	229	50	21.8	<6	---
48830	*	<6	---	<6	---
48831	241	28	11.6	<6	---
48832	89	9	10.1	<6	---
48834	147	20	13.6	<6	---
48835	253	10	4.0	<6	---
48836	1,158	111	9.6	<6	---
48837	1,248	115	9.2	<6	---
48838	1,485	227	15.3	<6	---
48840	669	104	15.5	<6	---
48841	50	14	28.0	<6	---
48842	1,582	252	15.9	<6	---
48843	3,324	268	8.1	<6	---
48845	60	<6	---	<6	---
48846	1,373	317	23.1	15	4.7
48847	395	74	18.7	<6	---
48848	523	59	11.3	<6	---
48849	441	61	13.8	<6	---
48850	336	42	12.5	<6	---
48851	185	27	14.6	<6	---
48852	15	<6	---	<6	---
48853	59	7	11.9	<6	---
48854	1,174	233	19.8	<6	---
48855	1,087	76	7.0	<6	---
48856	76	13	17.1	<6	---
48857	184	32	17.4	<6	---
48858	2,693	419	15.6	7	1.7
48860	106	24	22.6	<6	---
48861	114	12	10.5	<6	---
48864	1,210	140	11.6	<6	---
48865	122	33	27.0	<6	---
48866	367	70	19.1	<6	---
48867	2,012	616	30.6	24	3.9
48870	11	<6	---	<6	---
48871	126	11	8.7	<6	---
48872	574	98	17.1	<6	---
48873	133	11	8.3	<6	---
48874	22	6	27.3	<6	---
48875	869	111	12.8	<6	---
48876	374	43	11.5	<6	---
48877	166	31	18.7	<6	---
48878	155	26	16.8	<6	---

**Table 6: Children under Age Six Tested for Lead Poisoning 2014:
Blood Lead Level (BLL) Results by ZIP Code**

ZIP	Children less than Six Years of Age	Children Tested		Children with Elevated Blood Lead Levels*	
		Number of Children Tested	% Tested	Number BLL \geq 5 μ g/dL, Venous & Capillary	% BLL \geq 5 μ g/dL, Venous & Capillary
48879	1,387	166	12.0	<6	---
48880	566	101	17.8	<6	---
48881	422	52	12.3	<6	---
48883	567	78	13.8	<6	---
48884	304	59	19.4	<6	---
48885	66	8	12.1	<6	---
48886	151	20	13.2	<6	---
48888	426	93	21.8	<6	---
48889	77	12	15.6	<6	---
48890	164	16	9.8	<6	---
48891	199	30	15.1	<6	---
48892	330	77	23.3	<6	---
48893	421	52	12.4	<6	---
48894	188	18	9.6	<6	---
48895	750	84	11.2	<6	---
48896	23	<6	---	<6	---
48897	99	9	9.1	<6	---
48906	2,458	679	27.6	32	4.7
48910	3,059	827	27.0	19	2.3
48911	3,773	1257	33.3	35	2.8
48912	1,219	301	24.7	12	4.0
48915	889	309	34.8	17	5.5
48917	2,040	409	20.0	13	3.2
48933	118	27	22.9	<6	---
49001	2,232	515	23.1	29	5.6
49002	1,531	205	13.4	<6	---
49004	1,203	199	16.5	<6	---
49006	1,359	276	20.3	<6	---
49007	838	245	29.2	21	8.6
49008	1,019	174	17.1	<6	---
49009	2,965	390	13.2	<6	---
49010	1,339	258	19.3	11	4.3
49011	142	31	21.8	<6	---
49012	165	27	16.4	<6	---
49013	487	79	16.2	<6	---
49014	1,652	419	25.4	22	5.3
49015	2,230	519	23.3	12	2.3
49017	1,430	353	24.7	22	6.2
49021	443	77	17.4	<6	---
49022	3,136	773	24.6	31	4.0
49024	2,295	312	13.6	<6	---
49026	153	23	15.0	<6	---
49027	15	<6	---	<6	---
49028	562	99	17.6	<6	---
49029	104	17	16.3	<6	---
49030	269	26	9.7	<6	---
49031	547	51	9.3	<6	---
49032	230	35	15.2	<6	---
49033	82	9	11.0	<6	---
49034	141	17	12.1	<6	---

**Table 6: Children under Age Six Tested for Lead Poisoning 2014:
Blood Lead Level (BLL) Results by ZIP Code**

ZIP	Children less than Six Years of Age	Children Tested		Children with Elevated Blood Lead Levels*	
		Number of Children Tested	% Tested	Number BLL \geq 5 μ g/dL, Venous & Capillary	% BLL \geq 5 μ g/dL, Venous & Capillary
49036	1,739	374	21.5	18	4.8
49037	2,157	612	28.4	19	3.1
49038	618	71	11.5	<6	---
49040	266	28	10.5	<6	---
49042	394	84	21.3	<6	---
49043	212	30	14.2	<6	---
49045	429	70	16.3	<6	---
49046	428	62	14.5	<6	---
49047	1,165	187	16.1	<6	---
49048	2,350	535	22.8	11	2.1
49050	85	23	27.1	<6	---
49051	160	19	11.9	<6	---
49052	70	11	15.7	<6	---
49053	553	90	16.3	<6	---
49055	402	58	14.4	<6	---
49056	312	82	26.3	<6	---
49057	674	123	18.2	<6	---
49058	1,432	163	11.4	10	6.1
49060	88	14	15.9	<6	---
49061	107	12	11.2	<6	---
49064	276	39	14.1	<6	---
49065	449	54	12.0	<6	---
49066	63	7	11.1	<6	---
49067	298	35	11.7	<6	---
49068	972	157	16.2	8	5.1
49070	210	24	11.4	<6	---
49071	720	80	11.1	<6	---
49072	230	34	14.8	<6	---
49073	383	51	13.3	9	17.6
49075	11	7	63.6	<6	---
49076	278	22	7.9	<6	---
49078	612	95	15.5	<6	---
49079	1,056	109	10.3	8	7.3
49080	1,168	154	13.2	<6	---
49082	602	88	14.6	<6	---
49083	452	59	13.1	<6	---
49085	1,430	82	5.7	<6	---
49087	431	45	10.4	<6	---
49088	270	31	11.5	<6	---
49089	142	25	17.6	<6	---
49090	954	154	16.1	6	3.9
49091	1,880	370	19.7	9	2.4
49092	145	16	11.0	<6	---
49093	1,480	340	23.0	17	5.0
49094	295	57	19.3	<6	---
49095	108	14	13.0	<6	---
49096	262	32	12.2	<6	---
49097	757	92	12.2	<6	---
49098	461	61	13.2	<6	---
49099	351	80	22.8	<6	---

**Table 6: Children under Age Six Tested for Lead Poisoning 2014:
Blood Lead Level (BLL) Results by ZIP Code**

ZIP	Children less than Six Years of Age	Children Tested		Children with Elevated Blood Lead Levels*	
		Number of Children Tested	% Tested	Number BLL \geq 5 μ g/dL, Venous & Capillary	% BLL \geq 5 μ g/dL, Venous & Capillary
49101	208	20	9.6	<6	---
49102	91	7	7.7	<6	---
49103	751	144	19.2	<6	---
49106	272	27	9.9	<6	---
49107	731	115	15.7	<6	---
49111	225	59	26.2	<6	---
49112	730	51	7.0	<6	---
49113	127	17	13.4	<6	---
49115	7	<6	---	<6	---
49116	14	<6	---	<6	---
49117	197	24	12.2	<6	---
49119	11	<6	---	<6	---
49120	2,812	487	17.3	7	1.4
49125	96	9	9.4	<6	---
49126	95	28	29.5	<6	---
49127	714	54	7.6	<6	---
49128	212	29	13.7	<6	---
49129	27	<6	---	<6	---
49130	83	12	14.5	<6	---
49201	2,651	693	26.1	32	4.6
49202	1,986	536	27.0	28	5.2
49203	3,407	858	25.2	73	8.5
49220	145	33	22.8	<6	---
49221	2,982	638	21.4	76	11.9
49224	1,065	153	14.4	14	9.2
49227	95	27	28.4	<6	---
49228	392	45	11.5	<6	---
49229	181	35	19.3	<6	---
49230	506	96	19.0	<6	---
49232	289	59	20.4	<6	---
49233	174	30	17.2	<6	---
49234	119	32	26.9	<6	---
49235	151	28	18.5	<6	---
49236	312	28	9.0	<6	---
49237	196	53	27.0	<6	---
49238	153	26	17.0	<6	---
49240	587	79	13.5	<6	---
49241	196	39	19.9	<6	---
49242	1,032	289	28.0	9	3.1
49245	393	58	14.8	<6	---
49246	151	40	26.5	<6	---
49247	405	85	21.0	13	15.3
49248	58	8	13.8	<6	---
49249	236	41	17.4	<6	---
49250	475	107	22.5	<6	---
49251	428	108	25.2	<6	---
49252	208	50	24.0	<6	---
49253	162	25	15.4	<6	---
49254	171	45	26.3	<6	---
49255	227	24	10.6	<6	---

**Table 6: Children under Age Six Tested for Lead Poisoning 2014:
Blood Lead Level (BLL) Results by ZIP Code**

ZIP	Children less than Six Years of Age	Children Tested		Children with Elevated Blood Lead Levels*	
		Number of Children Tested	% Tested	Number BLL \geq 5 μ g/dL, Venous & Capillary	% BLL \geq 5 μ g/dL, Venous & Capillary
49256	318	55	17.3	7	12.7
49259	170	36	21.2	<6	---
49261	---	<6	---	<6	---
49262	71	13	18.3	<6	---
49263	6	<6	---	<6	---
49264	135	20	14.8	<6	---
49265	307	39	12.7	<6	---
49266	226	64	28.3	<6	---
49267	247	22	8.9	<6	---
49268	82	7	8.5	<6	---
49269	418	73	17.5	<6	---
49270	347	54	15.6	<6	---
49271	137	39	28.5	<6	---
49272	141	22	15.6	<6	---
49274	317	65	20.5	<6	---
49276	58	<6	---	<6	---
49277	237	44	18.6	<6	---
49279	59	<6	---	<6	---
49282	11	10	90.9	<6	---
49283	187	52	27.8	<6	---
49284	225	44	19.6	<6	---
49285	395	81	20.5	<6	---
49286	1,016	119	11.7	<6	---
49287	153	13	8.5	<6	---
49288	116	38	32.8	<6	---
49289	9	<6	---	<6	---
49301	1,477	139	9.4	<6	---
49302	570	45	7.9	<6	---
49303	107	9	8.4	<6	---
49304	230	50	21.7	<6	---
49305	151	23	15.2	<6	---
49306	651	66	10.1	<6	---
49307	1,132	151	13.3	<6	---
49309	75	9	12.0	<6	---
49310	251	19	7.6	<6	---
49312	14	6	42.9	<6	---
49315	1,597	168	10.5	<6	---
49316	1,763	160	9.1	<6	---
49318	106	32	30.2	<6	---
49319	1,478	222	15.0	<6	---
49320	---	<6	---	<6	---
49321	1,462	298	20.4	<6	---
49322	101	15	14.9	<6	---
49323	876	44	5.0	<6	---
49325	161	10	6.2	<6	---
49326	258	21	8.1	<6	---
49327	756	94	12.4	<6	---
49328	312	21	6.7	<6	---
49329	729	95	13.0	<6	---
49330	524	113	21.6	<6	---

**Table 6: Children under Age Six Tested for Lead Poisoning 2014:
Blood Lead Level (BLL) Results by ZIP Code**

ZIP	Children less than Six Years of Age	Children Tested		Children with Elevated Blood Lead Levels*	
		Number of Children Tested	% Tested	Number BLL \geq 5 μ g/dL, Venous & Capillary	% BLL \geq 5 μ g/dL, Venous & Capillary
49331	1,332	166	12.5	<6	---
49332	158	19	12.0	<6	---
49333	1,037	95	9.2	<6	---
49335	27	<6	---	<6	---
49336	367	28	7.6	<6	---
49337	848	80	9.4	<6	---
49338	130	20	15.4	<6	---
49339	178	21	11.8	<6	---
49340	184	30	16.3	<6	---
49341	2,878	272	9.5	<6	---
49342	124	14	11.3	<6	---
49343	456	64	14.0	<6	---
49344	240	37	15.4	<6	---
49345	1,084	199	18.4	<6	---
49346	342	26	7.6	<6	---
49347	69	8	11.6	<6	---
49348	1,036	77	7.4	<6	---
49349	604	65	10.8	<6	---
49401	1,205	82	6.8	<6	---
49402	64	14	21.9	<6	---
49403	154	82	53.2	<6	---
49404	688	72	10.5	<6	---
49405	97	16	16.5	<6	---
49406	35	<6	---	<6	---
49408	702	131	18.7	<6	---
49410	137	22	16.1	<6	---
49411	71	19	26.8	<6	---
49412	833	117	14.0	<6	---
49415	399	74	18.5	<6	---
49417	2,175	441	20.3	12	2.7
49418	2,255	239	10.6	<6	---
49419	704	70	9.9	<6	---
49420	571	188	32.9	6	3.2
49421	427	61	14.3	<6	---
49423	3,733	729	19.5	37	5.1
49424	4,073	705	17.3	21	3.0
49425	277	47	17.0	<6	---
49426	3,187	210	6.6	<6	---
49428	2,046	134	6.5	<6	---
49431	1,208	256	21.2	17	6.6
49435	243	27	11.1	<6	---
49436	102	21	20.6	<6	---
49437	480	75	15.6	<6	---
49440	74	29	39.2	<6	---
49441	2,587	486	18.8	37	7.6
49442	3,726	814	21.8	73	9.0
49444	2,571	546	21.2	33	6.0
49445	1,429	206	14.4	<6	---
49446	210	41	19.5	<6	---
49448	250	50	20.0	<6	---

**Table 6: Children under Age Six Tested for Lead Poisoning 2014:
Blood Lead Level (BLL) Results by ZIP Code**

ZIP	Children less than Six Years of Age	Children Tested		Children with Elevated Blood Lead Levels*	
		Number of Children Tested	% Tested	Number BLL \geq 5 μ g/dL, Venous & Capillary	% BLL \geq 5 μ g/dL, Venous & Capillary
49449	121	36	29.8	<6	---
49450	378	83	22.0	<6	---
49451	474	57	12.0	<6	---
49452	180	26	14.4	<6	---
49453	154	13	8.4	<6	---
49454	325	79	24.3	6	7.6
49455	441	122	27.7	<6	---
49456	1,223	250	20.4	<6	---
49457	934	125	13.4	<6	---
49458	5	<6	---	<6	---
49459	134	37	27.6	<6	---
49460	594	88	14.8	<6	---
49461	560	82	14.6	<6	---
49464	2,549	269	10.6	<6	---
49503	3,180	829	26.1	62	7.5
49504	3,696	812	22.0	76	9.4
49505	2,933	581	19.8	29	5.0
49506	2,563	434	16.9	37	8.5
49507	4,361	1309	30.0	144	11.0
49508	3,459	838	24.2	28	3.3
49509	2,864	726	25.3	14	1.9
49512	1,364	278	20.4	<6	---
49519	2,553	480	18.8	13	2.7
49525	1,865	271	14.5	<6	---
49534	1,559	174	11.2	<6	---
49544	662	128	19.3	<6	---
49546	2,165	418	19.3	8	1.9
49548	2,898	750	25.9	16	2.1
49601	1,744	216	12.4	<6	---
49611	16	9	56.3	<6	---
49612	62	11	17.7	<6	---
49613	30	12	40.0	<6	---
49614	161	24	14.9	<6	---
49615	211	34	16.1	<6	---
49616	134	34	25.4	<6	---
49617	154	38	24.7	<6	---
49618	54	<6	---	<6	---
49619	65	9	13.8	<6	---
49620	215	53	24.7	<6	---
49621	173	26	15.0	<6	---
49622	129	27	20.9	<6	---
49623	96	15	15.6	<6	---
49625	80	21	26.3	<6	---
49626	29	6	20.7	<6	---
49627	4	<6	---	<6	---
49628	16	<6	---	<6	---
49629	101	14	13.9	<6	---
49630	57	7	12.3	<6	---
49631	481	93	19.3	<6	---
49632	75	13	17.3	<6	---

**Table 6: Children under Age Six Tested for Lead Poisoning 2014:
Blood Lead Level (BLL) Results by ZIP Code**

ZIP	Children less than Six Years of Age	Children Tested		Children with Elevated Blood Lead Levels*	
		Number of Children Tested	% Tested	Number BLL \geq 5 μ g/dL, Venous & Capillary	% BLL \geq 5 μ g/dL, Venous & Capillary
49633	220	35	15.9	<6	---
49634	10	<6	---	<6	---
49635	144	41	28.5	<6	---
49636	9	<6	---	<6	---
49637	288	77	26.7	<6	---
49638	35	9	25.7	<6	---
49639	196	42	21.4	<6	---
49640	90	21	23.3	<6	---
49642	64	8	12.5	<6	---
49643	505	120	23.8	<6	---
49644	61	11	18.0	<6	---
49645	97	27	27.8	<6	---
49646	653	101	15.5	<6	---
49648	96	19	19.8	<6	---
49649	536	115	21.5	<6	---
49650	292	65	22.3	<6	---
49651	524	73	13.9	<6	---
49653	113	25	22.1	<6	---
49654	12	<6	---	<6	---
49655	241	28	11.6	<6	---
49656	79	16	20.3	<6	---
49657	301	32	10.6	<6	---
49659	555	122	22.0	<6	---
49660	740	165	22.3	7	4.2
49663	511	57	11.2	<6	---
49664	90	19	21.1	<6	---
49665	374	44	11.8	<6	---
49666	9	<6	---	<6	---
49667	28	<6	---	<6	---
49668	281	48	17.1	<6	---
49670	64	17	26.6	<6	---
49675	32	8	25.0	<6	---
49676	204	49	24.0	<6	---
49677	473	115	24.3	6	5.2
49679	79	12	15.2	<6	---
49680	160	34	21.3	<6	---
49682	274	64	23.4	<6	---
49683	120	28	23.3	<6	---
49684	2,634	599	22.7	9	1.5
49685	*	30	---	<6	---
49686	2,091	423	20.2	<6	---
49688	169	29	17.2	<6	---
49689	62	16	25.8	<6	---
49690	301	77	25.6	<6	---
49696	---	18	---	<6	---
49701	54	14	25.9	<6	---
49705	68	11	16.2	<6	---
49706	322	79	24.5	<6	---
49707	1,376	204	14.8	8	3.9
49709	155	23	14.8	<6	---

**Table 6: Children under Age Six Tested for Lead Poisoning 2014:
Blood Lead Level (BLL) Results by ZIP Code**

ZIP	Children less than Six Years of Age	Children Tested		Children with Elevated Blood Lead Levels*	
		Number of Children Tested	% Tested	Number BLL \geq 5 μ g/dL, Venous & Capillary	% BLL \geq 5 μ g/dL, Venous & Capillary
49710	15	<6	---	<6	---
49712	574	92	16.0	<6	---
49713	156	26	16.7	<6	---
49715	239	44	18.4	<6	---
49716	37	<6	---	<6	---
49718	29	<6	---	<6	---
49719	65	9	13.8	<6	---
49720	506	93	18.4	<6	---
49721	831	165	19.9	<6	---
49722	12	<6	---	<6	---
49724	75	10	13.3	<6	---
49725	14	<6	---	<6	---
49726	36	<6	---	<6	---
49727	474	90	19.0	<6	---
49728	15	<6	---	<6	---
49729	78	6	7.7	<6	---
49730	148	23	15.5	<6	---
49733	116	19	16.4	<6	---
49735	1,421	252	17.7	<6	---
49736	22	<6	---	<6	---
49738	567	62	10.9	<6	---
49740	295	53	18.0	<6	---
49743	34	<6	---	<6	---
49744	51	<6	---	<6	---
49745	46	16	34.8	<6	---
49746	202	35	17.3	<6	---
49747	84	12	14.3	<6	---
49748	4	<6	---	<6	---
49749	241	36	14.9	<6	---
49751	110	18	16.4	<6	---
49752	34	<6	---	<6	---
49753	120	18	15.0	<6	---
49755	124	14	11.3	<6	---
49756	153	32	20.9	<6	---
49757	31	<6	---	<6	---
49759	90	14	15.6	<6	---
49760	32	8	25.0	<6	---
49762	21	<6	---	<6	---
49764	10	8	80.0	<6	---
49765	271	49	18.1	<6	---
49766	161	12	7.5	<6	---
49768	19	<6	---	<6	---
49769	127	25	19.7	<6	---
49770	1,118	176	15.7	<6	---
49774	115	15	13.0	<6	---
49775	3	<6	---	<6	---
49776	122	18	14.8	<6	---
49777	45	<6	---	<6	---
49779	198	44	22.2	<6	---
49780	137	20	14.6	<6	---

**Table 6: Children under Age Six Tested for Lead Poisoning 2014:
Blood Lead Level (BLL) Results by ZIP Code**

ZIP	Children less than Six Years of Age	Children Tested		Children with Elevated Blood Lead Levels*	
		Number of Children Tested	% Tested	Number BLL \geq 5 μ g/dL, Venous & Capillary	% BLL \geq 5 μ g/dL, Venous & Capillary
49781	260	69	26.5	<6	---
49782	16	<6	---	<6	---
49783	1,374	262	19.1	<6	---
49788	293	73	24.9	<6	---
49791	17	<6	---	<6	---
49792	*	<6	---	<6	---
49793	8	<6	---	<6	---
49795	125	33	26.4	<6	---
49796	10	<6	---	<6	---
49799	140	27	19.3	<6	---
49801	675	139	20.6	<6	---
49802	391	74	18.9	<6	---
49805	24	<6	---	<6	---
49806	21	<6	---	<6	---
49807	230	21	9.1	<6	---
49808	9	<6	---	<6	---
49812	51	9	17.6	<6	---
49814	87	9	10.3	<6	---
49815	29	7	24.1	<6	---
49816	30	<6	---	<6	---
49817	33	<6	---	<6	---
49818	57	6	10.5	<6	---
49820	16	<6	---	<6	---
49821	101	11	10.9	<6	---
49822	14	<6	---	<6	---
49825	20	<6	---	<6	---
49826	5	<6	---	<6	---
49827	66	9	13.6	<6	---
49829	1,228	236	19.2	10	4.2
49831	49	15	30.6	<6	---
49833	17	<6	---	<6	---
49834	24	<6	---	<6	---
49835	47	<6	---	<6	---
49836	38	9	23.7	<6	---
49837	650	103	15.8	<6	---
49838	21	6	28.6	<6	---
49839	6	<6	---	<6	---
49840	41	9	22.0	<6	---
49841	583	95	16.3	<6	---
49847	52	16	30.8	<6	---
49848	6	<6	---	<6	---
49849	921	118	12.8	6	5.1
49852	9	<6	---	<6	---
49853	66	10	15.2	<6	---
49854	378	78	20.6	<6	---
49855	1,591	179	11.3	<6	---
49858	703	140	19.9	11	7.9
49861	18	<6	---	<6	---
49862	246	54	22.0	<6	---
49863	9	<6	---	<6	---

**Table 6: Children under Age Six Tested for Lead Poisoning 2014:
Blood Lead Level (BLL) Results by ZIP Code**

ZIP	Children less than Six Years of Age	Children Tested		Children with Elevated Blood Lead Levels*	
		Number of Children Tested	% Tested	Number BLL \geq 5 μ g/dL, Venous & Capillary	% BLL \geq 5 μ g/dL, Venous & Capillary
49866	654	49	7.5	<6	---
49868	301	78	25.9	<6	---
49870	229	49	21.4	<6	---
49871	37	<6	---	<6	---
49872	12	<6	---	<6	---
49873	11	<6	---	<6	---
49874	49	10	20.4	<6	---
49876	84	12	14.3	<6	---
49877	4	<6	---	<6	---
49878	157	29	18.5	<6	---
49879	69	<6	---	<6	---
49880	49	<6	---	<6	---
49881	13	<6	---	<6	---
49883	6	<6	---	<6	---
49884	33	9	27.3	<6	---
49885	124	8	6.5	<6	---
49886	24	<6	---	<6	---
49887	116	18	15.5	<6	---
49891	53	8	15.1	<6	---
49892	86	13	15.1	<6	---
49893	85	17	20.0	<6	---
49894	34	7	20.6	<6	---
49895	37	9	24.3	<6	---
49896	159	28	17.6	<6	---
49901	19	6	31.6	<6	---
49902	3	<6	---	<6	---
49903	6	<6	---	<6	---
49905	254	50	19.7	<6	---
49908	181	57	31.5	<6	---
49910	13	<6	---	<6	---
49911	171	28	16.4	<6	---
49912	44	11	25.0	<6	---
49913	603	142	23.5	9	6.3
49915	58	12	20.7	<6	---
49916	196	40	20.4	<6	---
49917	15	<6	---	<6	---
49918	2	<6	---	<6	---
49919	15	<6	---	<6	---
49920	185	50	27.0	<6	---
49921	18	7	38.9	<6	---
49922	92	12	13.0	<6	---
49925	12	<6	---	<6	---
49927	34	<6	---	<6	---
49929	16	<6	---	<6	---
49930	571	127	22.2	<6	---
49931	410	109	26.6	<6	---
49934	43	14	32.6	<6	---
49935	330	66	20.0	<6	---
49938	486	86	17.7	<6	---
49942	17	<6	---	<6	---

**Table 6: Children under Age Six Tested for Lead Poisoning 2014:
Blood Lead Level (BLL) Results by ZIP Code**

ZIP	Children less than Six Years of Age	Children Tested		Children with Elevated Blood Lead Levels*	
		Number of Children Tested	% Tested	Number BLL ≥ 5 µg/dL, Venous & Capillary	% BLL ≥ 5 ug/dL, Venous & Capillary
49945	168	46	27.4	<6	---
49946	286	72	25.2	<6	---
49947	30	<6	---	<6	---
49948	27	<6	---	<6	---
49950	60	14	23.3	<6	---
49952	9	<6	---	<6	---
49953	121	19	15.7	<6	---
49955	23	9	39.1	<6	---
49958	78	14	17.9	<6	---
49959	12	<6	---	<6	---
49960	11	<6	---	<6	---
49961	2	<6	---	<6	---
49962	4	<6	---	<6	---
49963	91	19	20.9	<6	---
49965	11	<6	---	<6	---
49967	24	<6	---	<6	---
49968	122	10	8.2	<6	---
49969	78	23	29.5	<6	---
49970	7	<6	---	<6	---
49971	25	7	28.0	<6	---
Po Box or Unknown	---	68	---	<6	---
Total	710,976	143,123	20.1	5,053	3.5

*Reflects each child's highest venous result, or if no venous, then highest capillary result

**No census data available

January 29, 2016

Sources: US Census Bureau, Census 2010 (ZIP Populations)

MDCH Data Warehouse (children tested and elevated levels)