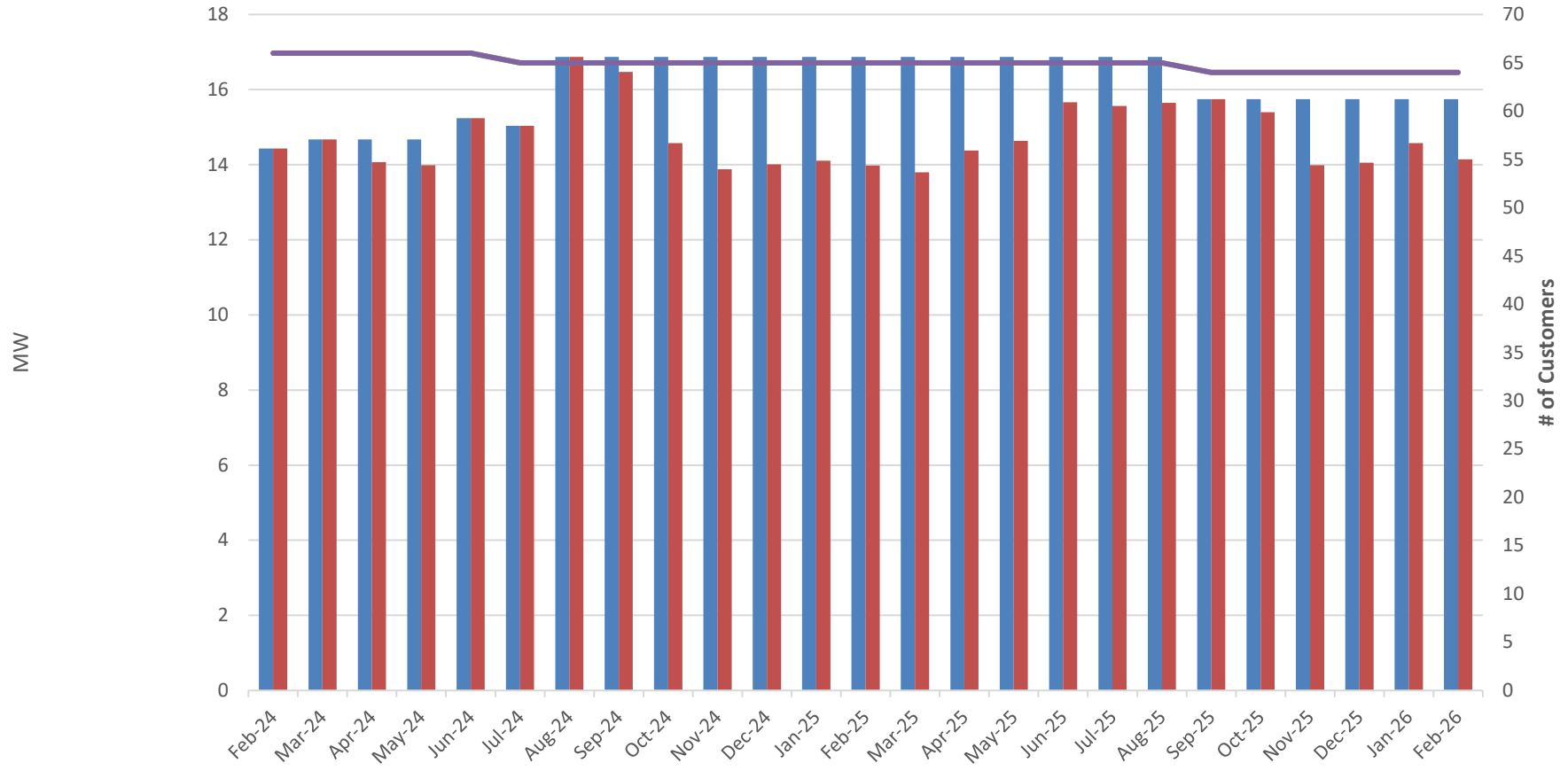


Upper Peninsula Power Company Customer Choice Program Activity (Cumulative Numbers of Customers & MW, Enrolled and In-Service, by Month)



	Feb-24	Mar-24	Apr-24	May-24	Jun-24	Jul-24	Aug-24	Sep-24	Oct-24	Nov-24	Dec-24	Jan-25	Feb-25	Mar-25	Apr-25	May-25	Jun-25	Jul-25	Aug-25	Sep-25	Oct-25	Nov-25	Dec-25	Jan-26	Feb-26	
MW Enrolled	14.43	14.68	14.68	14.68	15.24	15.03	16.87	16.87	16.87	16.87	16.87	16.87	16.87	16.87	16.87	16.87	16.87	16.87	16.87	16.87	15.74	15.74	15.74	15.74	15.74	15.74
MW In-Service	14.43	14.68	14.07	13.99	15.24	15.03	16.87	16.47	14.58	13.88	14.01	14.10	13.97	13.79	14.37	14.63	15.66	15.56	15.64	15.74	15.40	13.98	14.05	14.57	14.14	
Customers Enrolled	66	66	66	66	66	65	65	65	65	65	65	65	65	65	65	65	65	65	65	65	64	64	64	64	64	64
Customers In-Service	66	66	66	66	66	65	65	65	65	65	65	65	65	65	65	65	65	65	65	65	64	64	64	64	64	64

■ MW Enrolled
 ■ MW In-Service
 — Customers Enrolled
 — Customers In-Service