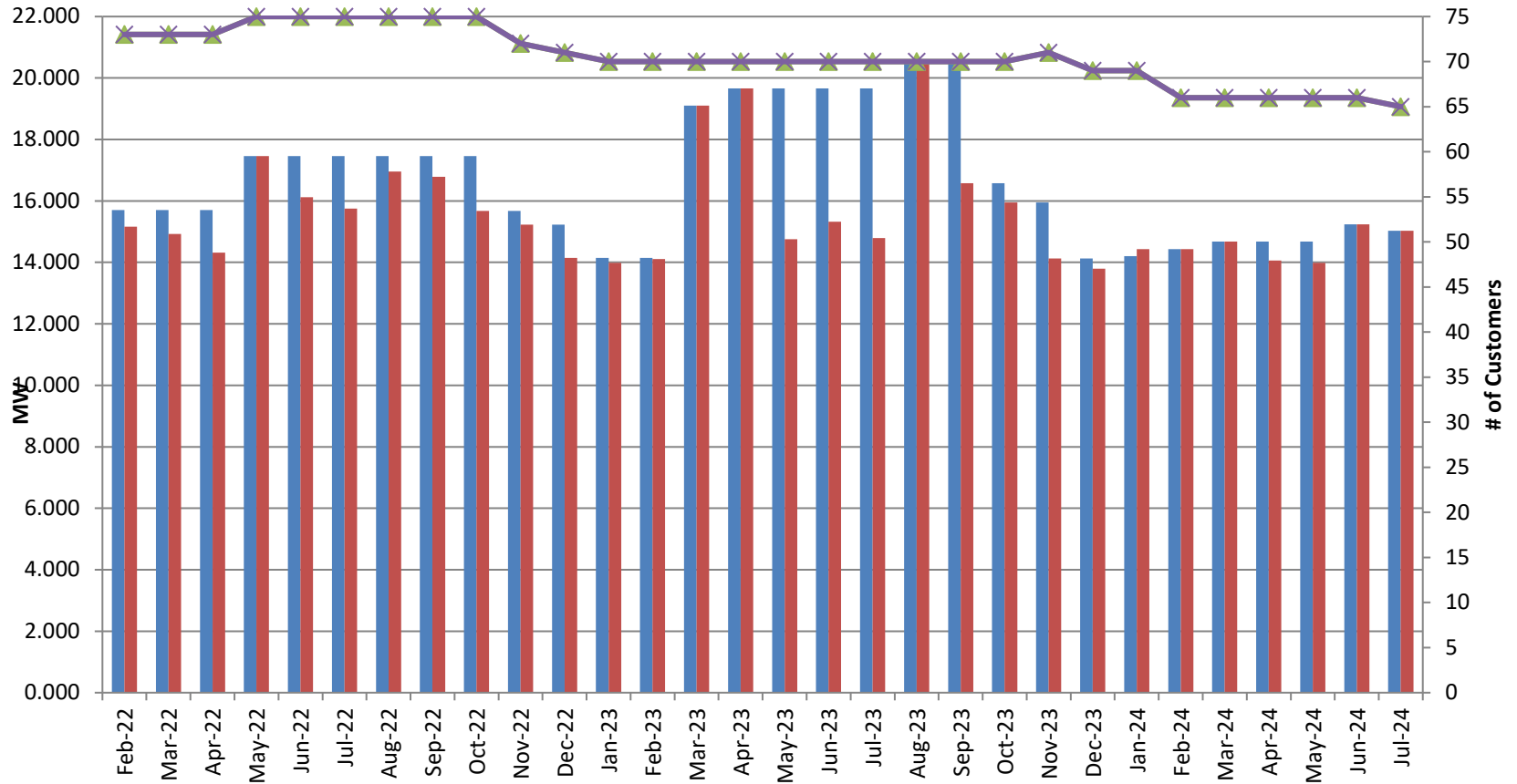


## Upper Peninsula Power Company Customer Choice Program Activity (Cumulative Numbers of Customers & MW, Enrolled and In-Service, by Month)



	Feb-22	Mar-22	Apr-22	May-22	Jun-22	Jul-22	Aug-22	Sep-22	Oct-22	Nov-22	Dec-22	Jan-23	Feb-23	Mar-23	Apr-23	May-23	Jun-23	Jul-23	Aug-23	Sep-23	Oct-23	Nov-23	Dec-23	Jan-24	Feb-24	Mar-24	Apr-24	May-24	Jun-24	Jul-24		
MW Enrolled	15.7	15.7	15.7	17.4	17.4	17.4	17.4	17.4	17.4	15.6	15.2	14.1	14.1	19.1	19.6	19.6	19.6	19.6	20.6	20.6	16.5	15.9	14.1	14.1	14.2	14.4	14.4	14.6	14.6	14.6	15.2	15.0
MW In-Service	15.1	14.9	14.3	17.4	16.1	15.7	16.9	16.7	15.6	15.2	14.1	13.9	14.1	19.1	19.6	14.7	15.3	14.7	20.6	16.5	15.9	14.1	13.7	14.4	14.4	14.6	14.6	14.0	13.9	15.2	15.0	
Customers Enrolled	73	73	73	75	75	75	75	75	75	72	71	70	70	70	70	70	70	70	70	70	70	70	71	69	69	66	66	66	66	66	65	
Customers In-Service	73	73	73	75	75	75	75	75	75	72	71	70	70	70	70	70	70	70	70	70	70	70	71	69	69	66	66	66	66	66	65	

■ MW Enrolled    
 ■ MW In-Service    
 ▲ Customers Enrolled    
 ✕ Customers In-Service