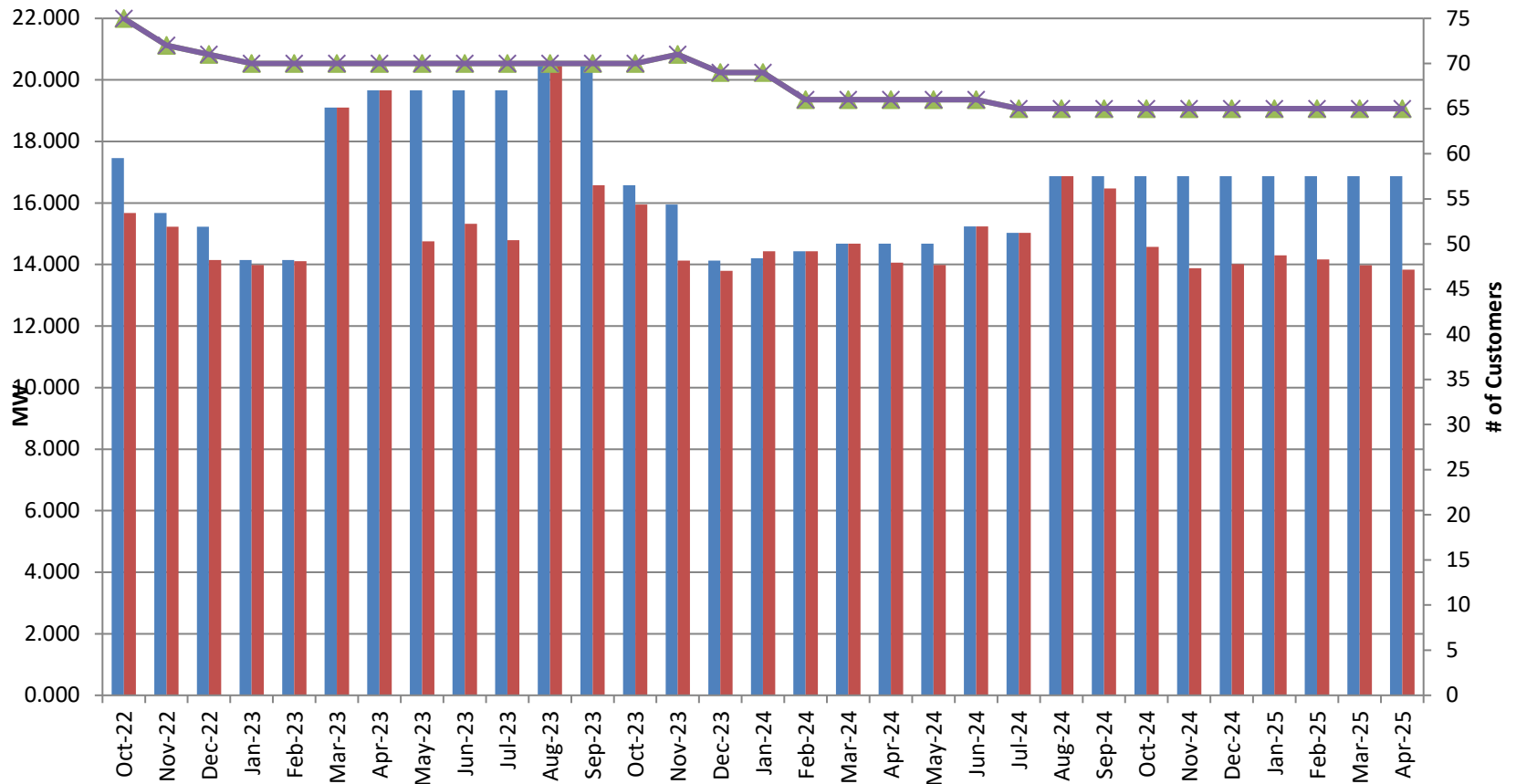


## Upper Peninsula Power Company Customer Choice Program Activity (Cumulative Numbers of Customers & MW, Enrolled and In-Service, by Month)



	Oct-22	Nov-22	Dec-22	Jan-23	Feb-23	Mar-23	Apr-23	May-23	Jun-23	Jul-23	Aug-23	Sep-23	Oct-23	Nov-23	Dec-23	Jan-24	Feb-24	Mar-24	Apr-24	May-24	Jun-24	Jul-24	Aug-24	Sep-24	Oct-24	Nov-24	Dec-24	Jan-25	Feb-25	Mar-25	Apr-25	
MW Enrolled	17.4	15.6	15.2	14.1	14.1	19.1	19.6	19.6	19.6	19.6	20.6	20.6	16.5	15.9	14.1	14.2	14.4	14.6	14.6	14.6	14.6	15.2	15.0	16.8	16.8	16.8	16.8	16.8	16.8	16.8	16.8	16.8
MW In-Service	15.6	15.2	14.1	13.9	14.1	19.1	19.6	14.7	15.3	14.7	20.6	16.5	15.9	14.1	13.7	14.4	14.4	14.6	14.0	13.9	15.2	15.0	16.8	16.4	14.5	13.8	14.0	14.3	14.1	13.9	13.8	
Customers Enrolled	75	72	71	70	70	70	70	70	70	70	70	70	70	71	69	69	66	66	66	66	66	66	65	65	65	65	65	65	65	65	65	65
Customers In-Service	75	72	71	70	70	70	70	70	70	70	70	70	70	71	69	69	66	66	66	66	66	66	65	65	65	65	65	65	65	65	65	65

■ MW Enrolled    
 ■ MW In-Service    
 ▲ Customers Enrolled    
 ✕ Customers In-Service