



Status of Electric Competition in Michigan

In compliance with Public Act 141 of 2000
February 1, 2026

Dan Scripps, Chair
Katherine Peretick, Commissioner
Shaquila Myers, Commissioner

Contents

- Introduction 1
- Status of Competition for Electric Supply 2
 - Overview 2
 - Michigan’s Electric Choice Program 2
 - 2016 Energy Laws 3
 - Alternative Electric Suppliers 3
 - Load Served Through Electric Customer Choice Program 4
 - Consumers Energy Electric Customer Choice Program 4
 - DTE Electric Company Customer Choice Program 4
 - Upper Peninsula Power Company (UPPCo) Electric Customer Choice Program 5
 - Upper Michigan Energy Resources Corporation (UMERC) Electric Customer Choice Program 6
 - Cloverland Electric Cooperative Electric Customer Choice Program 7
 - Indiana Michigan Power Company Electric Customer Choice Program 7
 - Benchmarking Michigan’s Electric Prices 8
- Commission Action Related to Electric Choice and Customer Protections 10
- Commission Action on Customer Education 11
- Recommendation for Legislation 11
- Appendices 12
 - Appendix 1 13
 - Appendix 2 26
 - Appendix 3 27

Introduction

The Customer Choice and Electricity Reliability Act (Public Act 141 of 2000, referred to throughout as Act 141) requires the Michigan Public Service Commission (Commission or MPSC) to file a report with the Governor and the Legislature by February 1 each year. This report represents the 21st year of electric choice in Michigan and includes a discussion of the following topics, pursuant to MCL 460.10u:

- The status of competition for the supply of electricity in Michigan.
- Recommendations for legislation, if any.
- Actions taken by the Commission to implement measures necessary to protect consumers from unfair or deceptive business practices by utilities, alternative electric suppliers, and other market participants.
- Information regarding consumer education programs approved by the Commission to inform consumers of all relevant information regarding the purchase of electricity and related services from alternative electric suppliers.

An important goal of Act 141 is to have competition within the electric industry by offering Michigan customers the opportunity to purchase electric generation services from their incumbent utility or an alternative electric supplier (AES). The Commission does not regulate the prices charged by an AES for its services. Customers may choose between an unregulated AES rate or a regulated utility rate.

Public Act 286 of 2008 (Act 286) was enacted on October 6, 2008, and amended Act 141. Section 10a(1)(a) of Act 286, MCL 460.10a, provides that no more than 10% of an electric utility's average weather-adjusted retail sales for the preceding calendar year may take service from an alternative electric supplier at any time¹. On December 21, 2016, Public Act 341 (Act 341) of 2016 was signed and became effective on April 20, 2017. Act 341 amended Act 286. The Commission outlined the specific procedures pertaining to the implementation of the 10% cap and established a cap tracking system that utilities are required to make available online.²

The electric choice programs for Consumers Energy Company, Upper Michigan Energy Resource Corporation, Upper Peninsula Power Company, Indiana Michigan Power, and DTE Electric Company were fully subscribed at the 10% cap throughout the year. The majority of customers participating in these electric choice programs are industrial customers, with a smaller number of commercial customers participating. Industrial customers also represent the vast majority of load served through electric choice. There continues to be approximately 5,101 customers statewide in the queue to participate in the choice program if space becomes available.³

¹ Except for Section 10a(1)(d) of Act 286 which excludes iron ore mining or processing facilities.

² Order dated April 28, 2018, in Case No. U-15801.

³ At 9.74%, DTE is just shy of the full 10%. This is because of a "stopper account," meaning the next available account is too large to fit under the cap.

To date, Michigan remains one of 20 states that had full or limited restructuring of the competitive electric market. Benchmark information comparing Michigan’s electric retail rates for industrial states to the 20 restructured states, Midwest states, and the national average can be found starting on page 11.

In 2025, the Commission issued multiple orders that adhere to the established framework for Michigan’s electric customer choice programs and implemented the provisions of Public Act 141 of 2000, Public Acts 286 and 295 of 2008, and Public Act 341 of 2016.

Status of Competition for Electric Supply

Overview

Retail Open Access (referred to throughout as “ROA,” “electric customer choice,” or “electric choice”) for all customers of Michigan investor-owned electric utilities took effect on January 1, 2002. AESs currently serve electric choice customers in the Consumers Energy Company (Consumers Energy), DTE Electric Company (DTE Electric), Upper Peninsula Power Company (UPPCo), Upper Michigan Energy Resources Corporation (UMERC), Cloverland Electric Cooperative (Cloverland), and Indiana Michigan Power Company (I&M) territories.

Michigan is one of 20 jurisdictions that had full or limited restructuring of retail electric markets in 2025.⁴ In Michigan, Public Act 286 caps electric choice participation at 10% of an electric utility’s average weather-adjusted retail sales for the preceding year. The 10% cap is reset annually to reflect the average weather-adjusted retail sales for the preceding year.

Specific information pertaining to the status of electric choice participation for each utility can be found at their respective web pages.⁵

Michigan’s Electric Choice Program

Electric customer choice is available to all customers of regulated electric utilities, excluding members of electric cooperatives with loads of less than one megawatt (MW).⁶ Michigan’s current retail electric market maintains regulation of most utility generation and distribution while allowing for competitive energy supply.

As of December 2025, there were approximately 5,517 customers participating in the electric choice programs (compared to 5,514 in 2024). This represents approximately 2,172 MW of electric demand, which is a decrease of about 15 MW from 2024. As of December 2025, approximately 5,101 customers remain in the queue, a decrease

⁴ **Figure 1 (Appendix 1).**

⁵ <https://www.michigan.gov/mpsc/regulatory/electricity/customer-choice>

⁶ MCL 460.10x and MCL 460.10y outline different requirements for implementation for customer choice for cooperatively owned and municipal electric utilities. MCL 460.10x allows any retail customer of a rural electric cooperative with a peak of 1 megawatt or above to select an alternative electric supplier. MCL 460.10y provides that the governing body of a municipally owned utility determines whether it will permit choice programs in its service territory.

from 5,899 in 2024. There was a decrease in the total electric choice load in 2025, and electric choice participation remained around 10% for each utility.

2016 Energy Laws

Public Act 341 of 2016 updated Michigan's energy laws relating to utility rate cases, electric customer choice, certificate of necessity, and electric capacity resource adequacy and establishes an integrated resource planning process. Act 341 amended Public Act 3 of 1939 and Public Act 286 of 2008. On September 29, 2009, the Commission adopted procedures regarding the allocation of the amount of load to be served by AESs. The Commission approved changes to these procedures pursuant to Act 341, which are attached as Appendix A to the April 28, 2017 Order in Case No. U-15801.⁷

Pursuant to MCL 460.10a(1)(c), the Commission issued orders adjusting the choice caps to zero for any utility serving fewer than 200,000 Michigan customers and that did not have any load served by an AES during the four-year period of April 20, 2013, to April 20, 2017. These orders were issued on July 12, 2017, for 12 utilities⁸ and directed that the cap for each utility automatically be reset to 10% on February 1, 2019. On February 1, 2019, I&M's cap was reset to 10%, and the utility began enrolling customers in its electric choice program.

Additionally, every Michigan licensed AES is subject to the capacity demonstration and state reliability mechanism (SRM) provisions outlined in Section 6w of Act 341. Section 6w requires all electric providers, including AESs, to demonstrate to the MPSC that they have enough resources to serve the anticipated needs of their customers four years forward. If an AES cannot or chooses not to arrange generating capacity to meet the new requirement, all or a portion of its load would be subject to an SRM capacity charge. The SRM capacity charge is set by the MPSC and is paid to the utility in exchange for the utility serving as the provider of last resort for capacity service.

In 2025, the Commission opened Case No. U-21907 for load-serving entities to file their capacity demonstrations for the 2029/2030 planning year. The filing dates are February 24 and March 3, 2026, for utilities and March 17, 2026, for AESs.

Alternative Electric Suppliers

There were 20 licensed AESs with seven of those actively serving customers in Michigan as of December 2025.⁹

⁷ [Order dated April 28, 2017](#) in [Case No. U-15801](#).

⁸ These utilities include: Alger Delta Cooperative Electric Association (U-18372), Alpena Power Company (U- 16086), Bayfield Electric Cooperative (U-18373), Cherryland Electric Cooperative (U-18374), Great Lakes Energy Cooperative (U-18376), Indiana Michigan Power Company (U-16090), HomeWorks Tri-County Electric Cooperative (U-18377), Midwest Energy Cooperative (U-18378), Northern States Power Company (U-16091), Thumb Electric Cooperative (U-18379), Presque Isle Electric & Gas Co-Op (U-18388), Ontonagon County Rural Electrification Association (U-18389).

⁹ See **Figure 2, Figure 4, Figure 6, Figure 8, and Figure 10 (Appendix 1)**.

Load Served Through Electric Customer Choice Program

Commercial and industrial customers accounted for almost all the participation in the electric choice programs during 2025. Typical choice participants are large industrial manufacturers and mid-size commercial customers, including retailers, restaurants, health care facilities, school systems, and other service providers. The number of residential choice customers participating in the electric choice program is negligible.

Consumers Energy Electric Customer Choice Program

The number of customers and the electric demand served by each AES in the Consumers Energy service territory at the end of each year is shown in **Figure 2 (Appendix 1)**. The electric choice load served in the Consumers Energy service territory at year-end 2025 totaled 708 MW. This compares to 714 MW in 2024. There were 957 customers served by AESs at year-end 2024 compared to 964 in 2024.¹⁰

Additional information depicting trends in the Consumers Energy electric customer choice program is included in **Appendix 1. Figure 3** shows the number of customers participating and the load served monthly from December 2023 through December 2025.

Below is a summary of cap-related data for Consumers Energy for 2023 – 2025. To date, Consumers Energy is fully subscribed to at the 10% cap.

Table 1 - Summary of cap-related data for Consumers Energy (2023-2025)

| Description | 2023 | 2024 | 2025 |
|--------------------------------------|----------------|----------------|----------------|
| Weather-Adjusted Retail Sales | 36,494,572 MWh | 36,508,734 MWh | 36,515,417 MWh |
| Participation Level | 3,657,230 MWh | 3,645,522 MWh | 3,645,499 MWh |
| Participation Percent | 10.02% | 10% | 10% |
| Customers in Service | 937 | 964 | 957 |
| Customers in Queue | 3,170 MWh | 3,073 MWh | 3,009 MWh |
| Total Load in Queue | 5,205,646 MWh | 5,083,967 MWh | 5,206,828 MWh |
| <i>Participation Percent w/o Cap</i> | <i>24.29%</i> | <i>23.91%</i> | <i>24.24%</i> |

Consumers Energy experienced a decrease in the number of customers and in the participation percentage of load served but an increase in load in the queue from 2024 to 2025. Hypothetically, if the cap did not exist, choice participation would be approximately 24% in Consumers Energy’s service territory.

DTE Electric Company Customer Choice Program

The number of customers and the electric demand served by each AES in the DTE Electric service territory at the end of the year is shown in **Figure 4 (Appendix 1)**. The electric choice load served in the DTE Electric service territory at year-end 2025

¹⁰ **Figure 2 (Appendix 1)**.

totaled 1,310 MW compared to 1,296 MW in 2024. The number of customers served by AESs totaled 4,390 at year-end 2025 compared to 4,348 in 2024¹¹.

Additional information depicting trends in the DTE Electric’s electric customer choice program is included in **Appendix 1. Figure 5** shows the number of customers participating and the load served monthly from July 2024 through December 2025.

Below is a summary of cap-related data for DTE Electric for 2023 – 2025. To date, DTE Electric is fully subscribed to at the 10% cap.¹²

Table 2 - Summary of cap-related data for DTE Electric Company (2023-2025)

| Description | 2023 | 2024 | 2025 |
|----------------------------------|----------------|----------------|----------------|
| Weather-Adjusted Retail | 45,081,466 MWh | 44,712,550 MWh | 44,732,199 MWh |
| Participation Level | 4,466,929 MWh | 4,451,864 MWh | 4,357,885 MWh |
| Participation Percent | 9.91% | 10% | 9.74% |
| Customers in Service | 4,410 | 4,347 | 4,390 |
| Customers in Queue | 2,777 | 2,779 | 2,030 |
| Total Load in Queue | 2,531,054 MWh | 2,417,970 MWh | 1,583,781 MWh |
| <i>Participation Percent w/o</i> | <i>15.52%</i> | <i>15.36%</i> | <i>13.28%</i> |

DTE Electric experienced an increase in the number of customers but a decrease in the load in the queue from 2024 to 2025 and in the participation percent of its load served by AESs. Hypothetically, if the cap did not exist, choice participation would be approximately 13% in DTE Electric’s service territory.

Upper Peninsula Power Company (UPPCo) Electric Customer Choice Program

The number of customers and the electric demand served by each AES in the UPPCo service territory at the end of the year is shown in **Figure 6 (Appendix 1)**. The electric choice load served in the UPPCo service territory at year-end 2025 totaled 14.058 MW compared to 14.012 MW in 2024.¹³ The number of customers served decreased at year-end 2025 to 64 compared to 65 in 2024.¹⁴

Additional information depicting trends in the UPPCo electric customer choice program is included in **Appendix 1. Figure 7** shows the number of customers participating and the load served monthly from December 2024 through December 2025.

¹¹ **Figure 4 (Appendix 1).**

¹² At 9.74%, DTE is just shy of the full 10%. This is because of a “stopper account,” meaning the next available account is too large to fit under the cap.

¹³ UPPCo updated their 2024 data after this report was issued on February 1, 2025. Originally, it was reported that the 2024 year-end total was 8.7 MWh. The correct total is 14.012 MWh. One meter number changed for a large customer and was not recognized at the end of 2024, causing a significant difference to the total. This update is also reflected in **Figures 6 and 7 (Appendix 1)**.

¹⁴ **Figure 6 (Appendix 1).**

Below is a summary of cap-related data for UPPCo for 2023 – 2025. The current level of choice participation is approximately 12.5%. Hypothetically, if the cap did not exist, choice participation would be approximately 15.9% in UPPCo’s service territory.

Table 3 - Summary of cap-related data for Upper Peninsula Power Company (2023-2025)

| Description | 2023 | 2024 | 2025 |
|-------------------------------|-------------|-------------|-------------|
| Weather-Adjusted Retail Sales | 728,749 MWh | 674,997 MWh | 676,524 MWh |
| Participation Level | 84,284 MWh | 92,120 MWh | 84,430 MWh |
| Participation Percent | 11.56% | 13.65% | 12.5% |
| Customers in Service | 69 | 65 | 64 |
| Customers in Queue | 17 | 17 | 29 |
| Total Load in Queue | 18,309 MWh | 21,840 MWh | 23,112 MWh |
| Participation Percent w/o Cap | 14.08% | 16.88% | 15.9% |

Upper Michigan Energy Resources Corporation (UMERC) Electric Customer Choice Program

On December 9, 2016, the Commission approved a settlement agreement in Case No. U-18061¹⁵ that permitted the creation of a new Michigan-only jurisdictional utility in the Upper Peninsula. UMERC was established on January 1, 2017, as a new Michigan-only jurisdictional utility in the Upper Peninsula. Former WEPCo and WPSC customers are now being served by UMERC.

The number of customers and electric demand served by each AES in the UMERC service territory at the end of the year is shown in **Figure 8 (Appendix 1)**. The electric choice load served in the UMERC service territory at year-end 2025 totaled 80.2 MW compared to 81.4 MW in 2024. The number of customers served decreased from 73 at 2024 year-end to 57 at 2025 year-end.¹⁶

Additional information depicting trends in the UMERC electric customer choice program is included in **Appendix 1. Figure 9** shows the number of customers participating and the load served monthly from July 2023 through December 2025.

Below is a summary of cap-related data for UMERC for 2023 – 2025. The Tilden Mining Company (Tilden) load was transferred from WEPCo to UMERC in the first quarter of 2019, which is reflected in the weather-adjusted retail sales.

Note: MCL 460.10a(1)(f) provides that any customer operating an iron ore mining facility, iron ore processing facility, or both located in the Upper Peninsula shall be permitted to purchase all or any portion of its electricity from an alternative electric supplier, regardless of whether the sales exceed 10% of the serving electric utility’s average weather-adjusted retail sales. Because of this, the current level of choice participation is approximately 11.6% in UMERC’s service territory.

¹⁵ See [Case No. U-18061](#).

¹⁶ **Figure 8 (Appendix 1)**.

Table 4 - Summary of cap-related data for Upper Michigan Energy Resources Corporation (2023 – 2025)

| Description | 2023 | 2024 | 2025 |
|-------------------------------|---------------|---------------|---------------|
| Weather-Adjusted Retail Sales | 1,993,206 MWh | 2,088,104 MWh | 2,053,842 MWh |
| Participation Level | 276,265 MWh | 244,338 MWh | 237,562 MWh |
| Participation Percent | 13.86% | 11.7% | 11.6% |
| Customers in Service | 75 | 73 | 57 |
| Customers in Queue | 1 | 1 | 2 |
| Total Load in Queue | 60,010 MWh | 73,644 MWh | 78,220 MWh |
| Participation Percent w/o Cap | 16.87% | 15.23% | 15.4% |

Hypothetically, if the cap did not exist, choice participation would be approximately 15% in UMERC’s service territory.

Cloverland Electric Cooperative Electric Customer Choice Program

Beginning in December 2016, Cloverland had one customer taking electric choice. The electric choice load served in the Cloverland service territory at year-end 2025 totaled 9.07 MW, as shown in **Figure 10 (Appendix 1)** with one customer.¹⁷ The current level of choice participation is approximately 9%. Hypothetically, if the cap did not exist, choice participation would still be approximately 9% in Cloverland’s service territory because there are no customers in the queue.

Below is a summary of cap-related data for Cloverland Electric for 2023-2025.

Table 5 - Summary of cap-related data for Cloverland Electric Cooperative (2023-2025)

| Description | 2023 | 2024 | 2025 |
|-------------------------------|-------------|-------------|-------------|
| Weather-Adjusted Retail Sales | 788,470 MWh | 789,270 MWh | 792,985 MWh |
| Participation Level | 72,059 MWh | 71,024 MWh | 71,511 |
| Participation Percent | 9.14% | 9% | 9% |
| Customers in Service | 1 | 1 | 1 |
| Customers in Queue | 0 | 0 | 0 |
| Total Load in Queue | 0 MWh | 0 MWh | 0 MWh |
| Participation Percent w/o Cap | 9.14% | 9% | 9% |

Indiana Michigan Power Company Electric Customer Choice Program

The number of customers and the electric demand served by each AES in the I&M service territory at the end of the year is shown in **Figure 12 (Appendix 1)**. The electric choice load served in the I&M service territory decreased from 59.61 MW for year-end 2024 to 50.94 MW for year-end 2025. The number of customers served by AESs decreased to 48 at year-end 2025 from 61 in 2024.¹⁸

¹⁷ Figure 10 (Appendix 1).

¹⁸ Figure 12 (Appendix 1).

Additional information depicting trends in I&M’s electric customer choice program is included in **Appendix 1. Figure 13** shows the number of customers participating and the load served monthly from December 2024 through December 2025.

Below is a summary of cap-related data for I&M for 2023-2025. The current level of choice participation is approximately 10.76%. Hypothetically, if the cap did not exist, choice participation would be approximately 14% in I&M’s service territory.

Table 6 - Summary of cap-related data for Indiana Michigan Power Company (2023-2025)

| Description | 2023 | 2024 | 2025 |
|--------------------------------------|---------------|---------------|---------------|
| Weather-Adjusted Retail Sales | 2,860,254 MWh | 2,967,634 MWh | 2,957,236 MWh |
| Participation Level | 268,260 MWh | 329,619 MWh | 318,289 MWh |
| Participation Percent | 9.38% | 11.11% | 10.76% |
| Customers in Service | 47 | 61 | 48 |
| Customers in Queue | 16 | 29 | 31 |
| Total Load in Queue | 25,017 MWh | 33,338 MWh | 92,108 MWh |
| <i>Participation Percent w/o Cap</i> | <i>10.25%</i> | <i>12.23%</i> | <i>13.88%</i> |

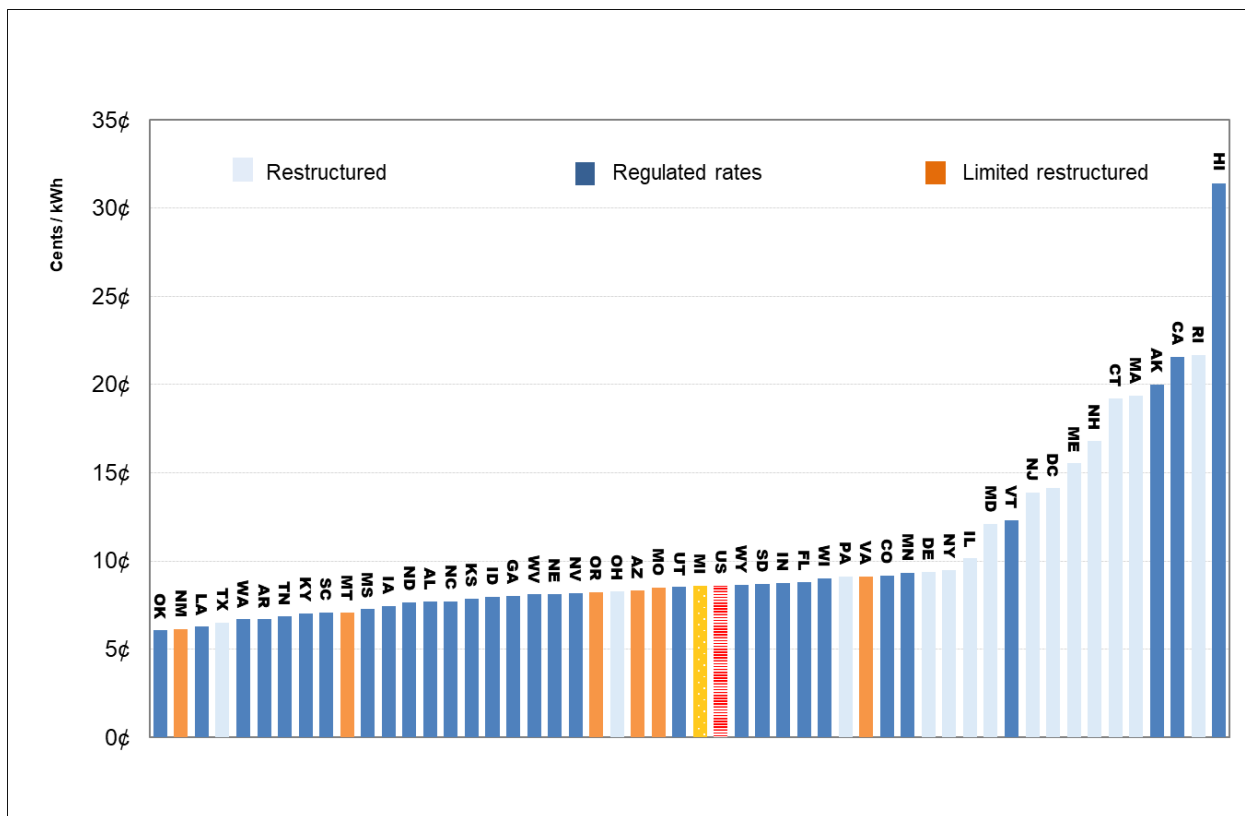
Benchmarking Michigan’s Electric Prices¹⁹

This report provides benchmark data that compares every electric utility (IOUs, municipalities, and co-ops) in Michigan’s industrial electric rates to those of other jurisdictions based on customer class. As noted above, the majority of customers participating in these electric choice programs are industrial customers, and industrial customers also represent the vast majority of load served through electric choice. The data shown in the following figures for 2025 reflects January through September 2025 and may change.

The figure below reflects the 2025 average industrial retail rates. In 2025, Michigan’s industrial retail rates ranked 25th among jurisdictions at \$0.0858/kWh. Michigan’s industrial rates are slightly lower than the national average.

¹⁹ Benchmarking data is sourced from the [U.S. Energy Information Administration \(EIA\)](#). EIA’s data may include some minor inconsistencies and is subject to change retroactively.

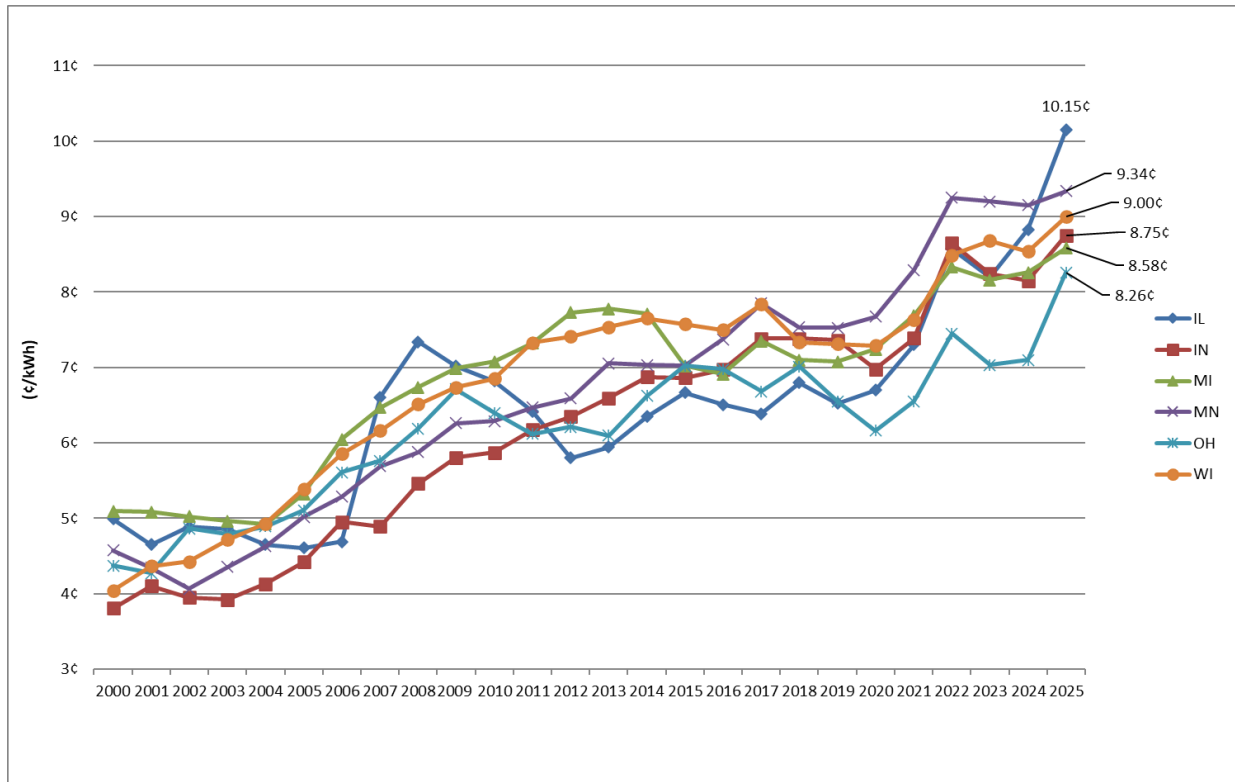
Average Industrial Retail Price, 2025



Source: Form EIA-861M (formerly EIA-826) detailed data (<https://www.eia.gov/electricity/data/eia861m/>). Current and Historical Monthly Retail Sales, Revenues, and Average Retail Price by State and By Sector (Form EIA-826) 2025.

The figure below reflects the average industrial retail rates for the neighboring Midwest states from 2000 through 2025. In 2025, Michigan’s average industrial retail rates ranked second lowest among the six Midwest states at \$0.0858/kWh, an improvement from the previous year as Michigan’s industrial rates are now lower than they are in Indiana. Prices are based on actual reported statewide utility sales and revenues for each year and are not adjusted for inflation.

Average Industrial Retail Rates for Midwest 2000-2025



Source: Form EIA-861M (formerly EIA-826) detailed data (<https://www.eia.gov/electricity/data/eia861m/>). Current and Historical Monthly Retail Sales, Revenues, and Average Retail Price by State and By Sector (Form EIA-826) 2025.

Commission Action Related to Electric Choice and Customer Protections

The following orders further supported and implemented the framework for Michigan’s electric customer choice programs, the provisions of Act 141, and the amendments of Act 286, Act 295, and Act 341.²⁰ Throughout 2025, the Commission issued the following orders in relation to electric customer choice:

- One rescinding an AES license and closing a renewable energy plan.
- Two orders relating to capacity demonstration requirements were provided in Act 341.
- Three orders setting state reliability mechanism capacity rates that may be applicable to retail open access load if AES capacity demonstration requirements are not met by AESs serving in Michigan.

See **Appendix 2** for a complete list and further detail on these orders.

²⁰ Commission orders are available on the Commission web page at <https://mi-psc.force.com/s/>.

Commission Action on Customer Education

Due to the limit on participation, no licensed AESs are currently marketing or enrolling residential customers. Because of this, there is no current customer education campaign by the MPSC. The MPSC does have a dedicated web page²¹ for consumer information, which includes a consumer tip web page regarding Michigan's Electric Choice program.

Recommendation for Legislation

The Commission is continually implementing the provisions outlined in PA 341 and has no recommendations for legislation related to the energy choice framework established under Act 141, Act 286, and Act 341.

However, as noted in the Commission's December 2, 2024 Upper Peninsula Energy Report developed pursuant to Public Act 235 of 2023 (Act 235), the statutory increase in utility distributed generation programs included elsewhere in Act 235, combined with the issuance of Order 2222 in September 2020 by the Federal Energy Regulatory Commission (FERC), has resulted in growing interest and opportunities related to aggregated distributed energy resources. In its December 21, 2022 order in Case No. U-21099, the Commission partially lifted the prohibition on the ability of aggregated demand response resources from participating in regional power markets as part of the Commission's ongoing efforts to bolster Michigan's energy capacity. However, the actions taken to date only apply to retail commercial and industrial customers with a minimum enrolled load of 1 megawatt, with the Commission noting that "additional work surrounding customer protections is warranted" before allowing participation by residential and smaller commercial customers. As such, the Commission repeats its recommendation from the Upper Peninsula Energy Report that the Legislature "should work to enact a statutory framework that provides meaningful consumer protections while providing a pathway for aggregated DERs to participate in the regional wholesale electricity markets, consistent with FERC Order 2222."

Throughout 2025, the Commission continued to engage with interested parties regarding the resource adequacy and state reliability mechanism provisions within the 2016 energy law.²² The Commission will continue to closely monitor the impact of the implementation of the 2016 energy law on energy providers and customers in Michigan. Although the Commission does not recommend any legislative changes at this time, the Commission stands ready to assist the Legislature for any reason.

²¹ https://www.michigan.gov/mpsc/0,9535,7-395-93308_93325_93423_93501_93509---,00.html.

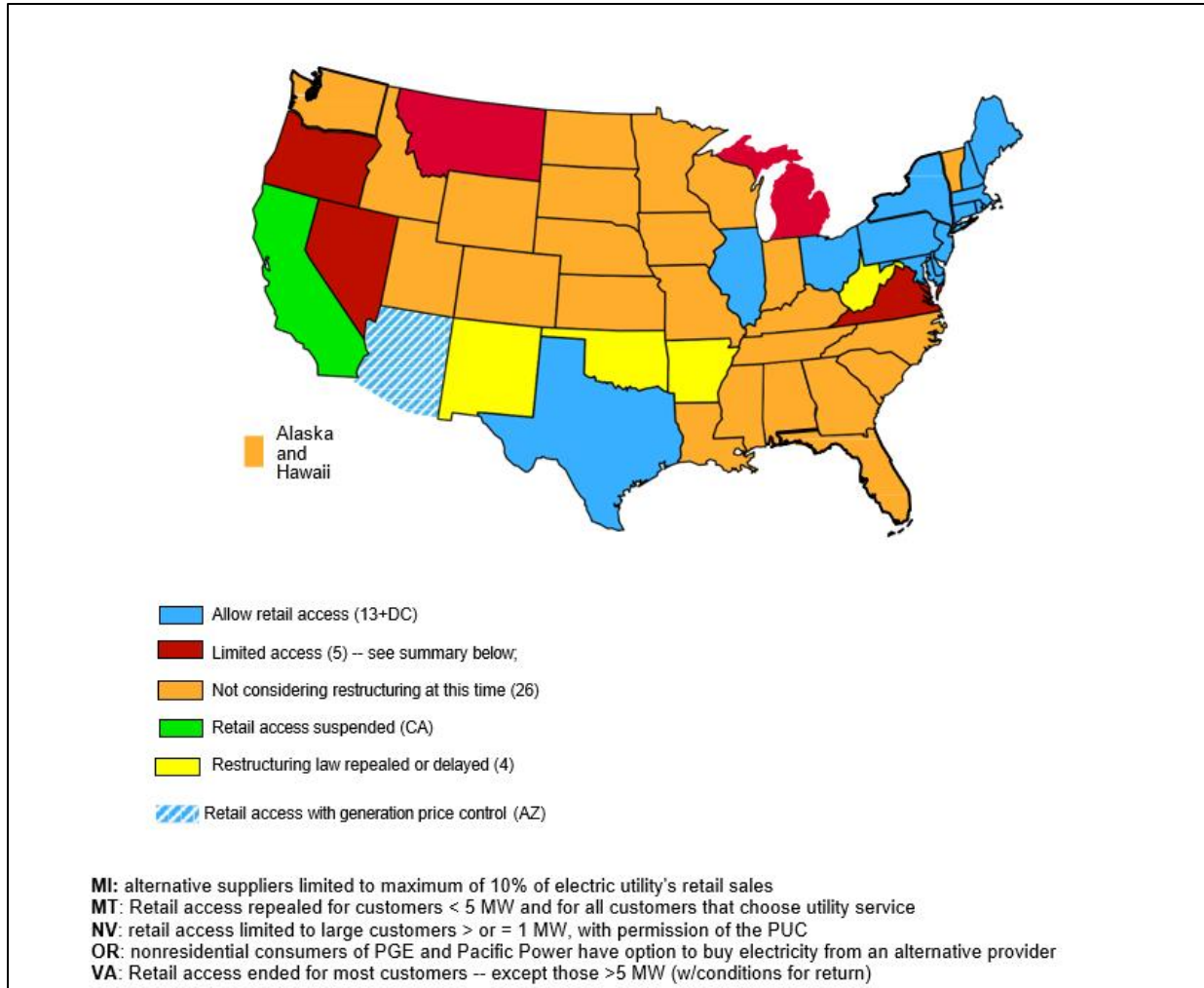
²² See https://www.michigan.gov/mpsc/0,4639,7-159-80741_80743-411741--,00.html and http://www.michigan.gov/mpsc/0,4639,7-159-80741_80743-406252--,00.html.

Appendices

Appendix 1

Figure 1

Retail Electric Markets in the U.S.



Source: Ken Rose, August 2018 58th IPU Annual Regulatory Studies Program

Figure 2

AES Customers in Consumers Energy Service Territory, Year End 2025

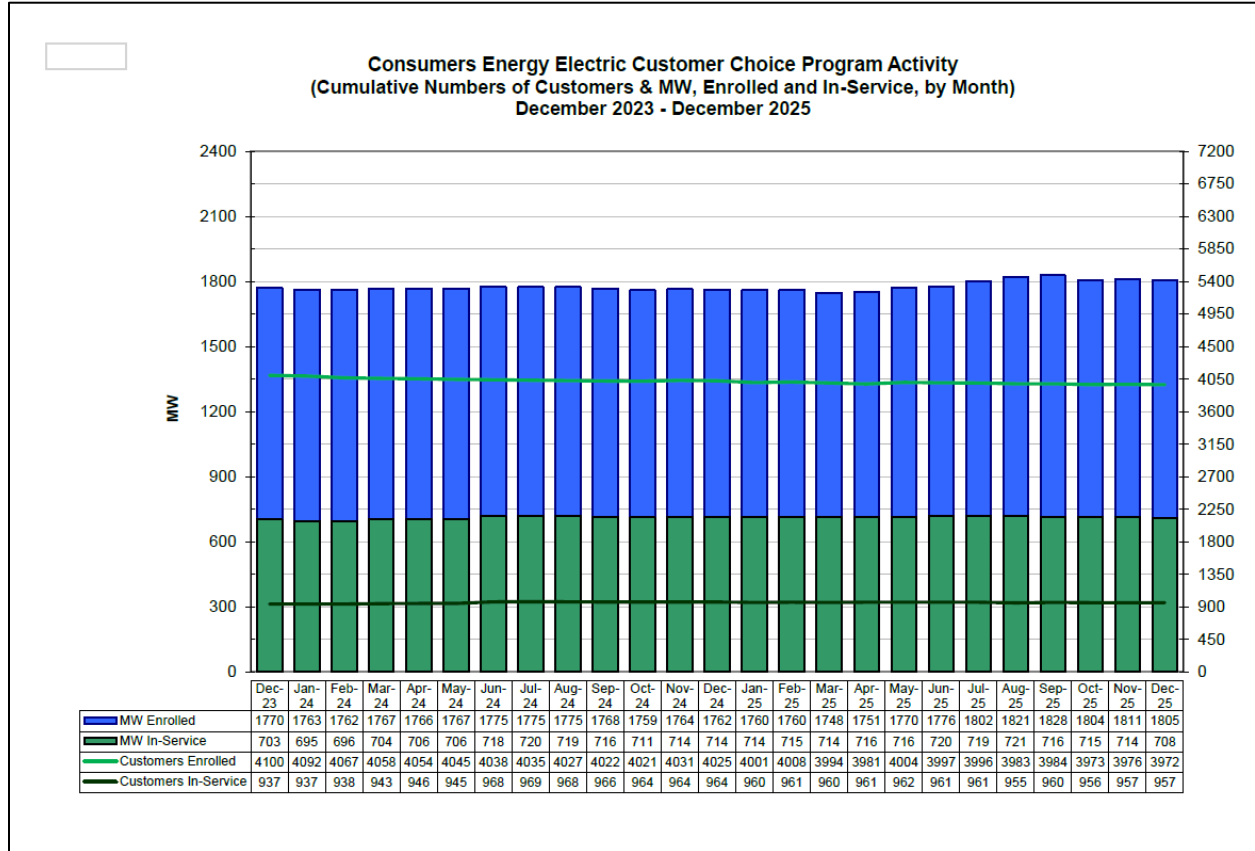
| AES Name | Number of Customers | | | | | | MW Served | | | | | |
|--|---------------------|------------|------------|------------|------------|------------|------------|------------|------------|------------|------------|------------|
| | 2020 | 2021 | 2022 | 2023 | 2024 | 2025 | 2020 | 2021 | 2022 | 2023 | 2024 | 2025 |
| Constellation New Energy Inc. | 831 | 822 | 821 | 820 | 821 | 702 | 382 | 392 | 419 | 387 | 394 | 366 |
| CMS ERM MI | 0 | 0 | 0 | 0 | 29 | 0 | 0 | 0 | 0 | 0 | 58 | 26 |
| Direct Energy Business ¹ | 37 | 31 | 13 | 12 | 12 | 14 | 6 | 5 | 3 | 3 | 3 | 5 |
| Energy Harbor fka FirstEnergy Solutions ² | 12 | 13 | 10 | 11 | 7 | 11 | 94 | 98 | 64 | 99 | 28 | 87 |
| Calpine Energy Solutions LLC fka Noble ³ | 65 | 65 | 61 | 61 | 87 | 87 | 66 | 64 | 63 | 63 | 81 | 79 |
| Spartan Renewable Energy | 5 | 4 | 4 | 4 | 4 | 0 | 28 | 25 | 25 | 24 | 24 | 0 |
| Wolverine Power Marketing | 26 | 28 | 29 | 29 | 29 | 32 | 121 | 125 | 127 | 127 | 126 | 145 |
| Totals | 976 | 963 | 938 | 937 | 964 | 957 | 697 | 709 | 701 | 703 | 714 | 708 |

Note: ¹On September 1, 2008, Strategic Energy LLC changed its name to Direct Energy Business LLC.
² On May 29, 2020, First Energy Solutions Corp., changed its name to Energy Harbor.
³ On November 1, 2010, Sempra Energy Solutions LLC changed its name to Noble Americas Energy Solutions LLC. On December 1, 2016, Noble Americas Energy Solutions LLC changed its name to Calpine Energy Solutions LLC.

Figure 3



Consumers Energy Electric Customer Choice Program Activity



Source: Consumers Energy Company, December 2025.

Notes:

MW Enrolled – Total megawatts actively being served by an AES plus the total megawatts held by the queued customers.

MW In Service – Total megawatts actively being served by an AES.

Customers Enrolled – Total number of customers actively being served by an AES plus the total number of queued customers.

Customers In Service – Total customers actively being served by an AES.

Figure 4

AES Customers in DTE Electric Company Service Territory, Year End 2025

| AES Name | Number of Customers | | | | | | MW Served | | | | | |
|--|---------------------|-------|-------|-------|-------|-------|-----------|-------|-------|-------|-------|-------|
| | 2020 | 2021 | 2022 | 2023 | 2024 | 2025 | 2020 | 2021 | 2022 | 2023 | 2024 | 2025 |
| CMS ERM MI | 12 | 12 | 20 | 19 | 82 | 402 | 35 | 35 | 35 | 35 | 55 | 133 |
| Just Energy Solutions fka Commerce ¹ | 84 | 75 | 68 | 0 | 0 | 0 | 2 | 2 | 2 | 0 | 0 | 0 |
| Constellation NewEnergy | 2,191 | 2,487 | 2,348 | 2,263 | 2,226 | 2,003 | 505 | 603 | 583 | 597 | 629 | 561 |
| Direct Energy Business ² | 1,219 | 1,181 | 1,100 | 1,071 | 1,008 | 984 | 364 | 361 | 332 | 331 | 311 | 307 |
| Eligo Energy, MI LLC | 0 | 0 | 0 | 0 | 0 | 0 | 0 | 0 | 0 | 0 | 0 | 0 |
| Energy Harbor fka FirstEnergy Solutions ³ | 19 | 53 | 64 | 70 | 51 | 38 | 7 | 35 | 36 | 32 | 16 | 9 |
| Calpine Energy Solutions LLC fka Noble ⁵ | 905 | 901 | 1,014 | 978 | 972 | 955 | 122 | 124 | 133 | 130 | 127 | 142 |
| Wolverine Power Marketing | 121 | 37 | 10 | 9 | 9 | 9 | 79 | 160 | 158 | 158 | 158 | 158 |
| Totals ⁶ | 4,649 | 4,746 | 4,624 | 4,410 | 4,348 | 4,391 | 1,116 | 1,320 | 1,279 | 1,283 | 1,296 | 1,310 |

Note: ¹ On April 5, 2017, Commerce Energy Inc. changed its name to Just Energy Solutions, Inc.

² On September 1, 2008, Strategic Energy LLC changed its name to Direct Energy Business LLC.

³ On May 29, 2020, First Energy Solutions Corp. changed its name to Energy Harbor.

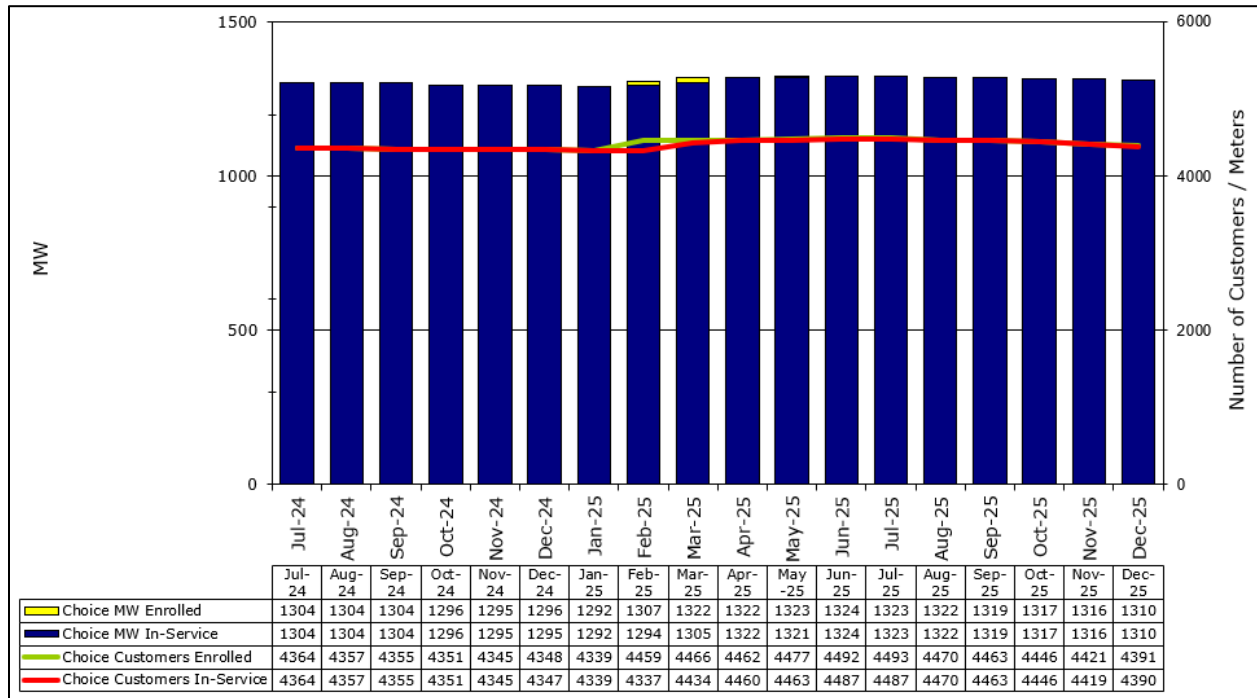
⁴ During 2016, MidAmerican Energy Company transferred their customers to MidAmerican Energy Services and voluntarily rescinded its AES license. MidAmerican now refers to MidAmerican Energy Services.

⁵ On November 1, 2010, Sempra Energy Solutions LLC changed its name to Noble Americas Energy Solutions LLC On December 1, 2016, Noble Americas Energy Solutions LLC changed its name to Calpine Energy Solutions LLC.

⁶ Total does not add correctly due to rounding

Figure 5

DTE Electric Customer Choice Program Activity



Source: DTE Electric Company, December 2025.

Notes:

MW Enrolled – Megawatts that have requested to switch to another AES.

MW In Service - Total megawatts actively being served by an AES.

Customers Enrolled – Customers who have requested to switch to another AES.

Customers In Service – Total customers actively being served by an AES.

Figure 6

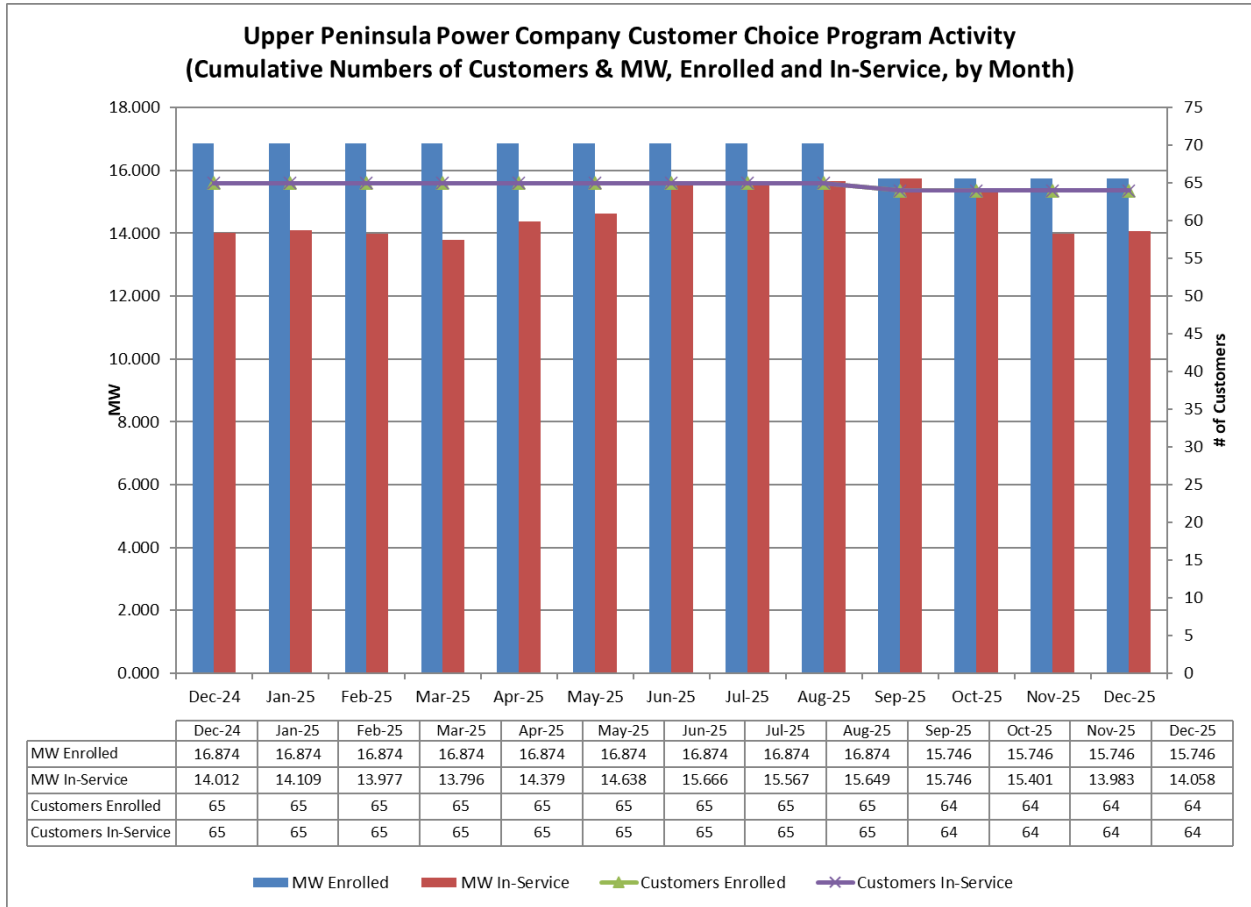
AES Customers in the UPPCo Service Territory, Year End 2025²³

| AES Name | Number of Customers | | | | | | MW Served | | | | | |
|---------------------------|---------------------|------|------|------|------|------|-----------|--------|-------|--------|-------|--------|
| | 2020 | 2021 | 2022 | 2023 | 2024 | 2025 | 2020 | 2021 | 2022 | 2023 | 2024 | 2025 |
| Constellation NewEnergy | 51 | 71 | 69 | 67 | 63 | 62 | 6.174 | 7.712 | 7.125 | 6.942 | 6.925 | 6.756 |
| Wolverine Power Marketing | 2 | 2 | 2 | 2 | 2 | 2 | 5.908 | 7.049 | 7.025 | 6.852 | 1.783 | 7.3 |
| Totals | 53 | 73 | 71 | 69 | 65 | 64 | 12.08 | 14.761 | 14.15 | 13.794 | 8.708 | 14.058 |

²³ UPPCo updated their 2024 data after this report was issued on February 1, 2025. One meter number changed for a large customer and was not recognized at the end of 2024, causing a significant difference to the total. UPPCo did not provide MPSC Staff with updated 2024 data upon request.

Figure 7

Upper Peninsula Power Company Customer Choice Program Activity



Source: Upper Peninsula Power Company, December 2025.

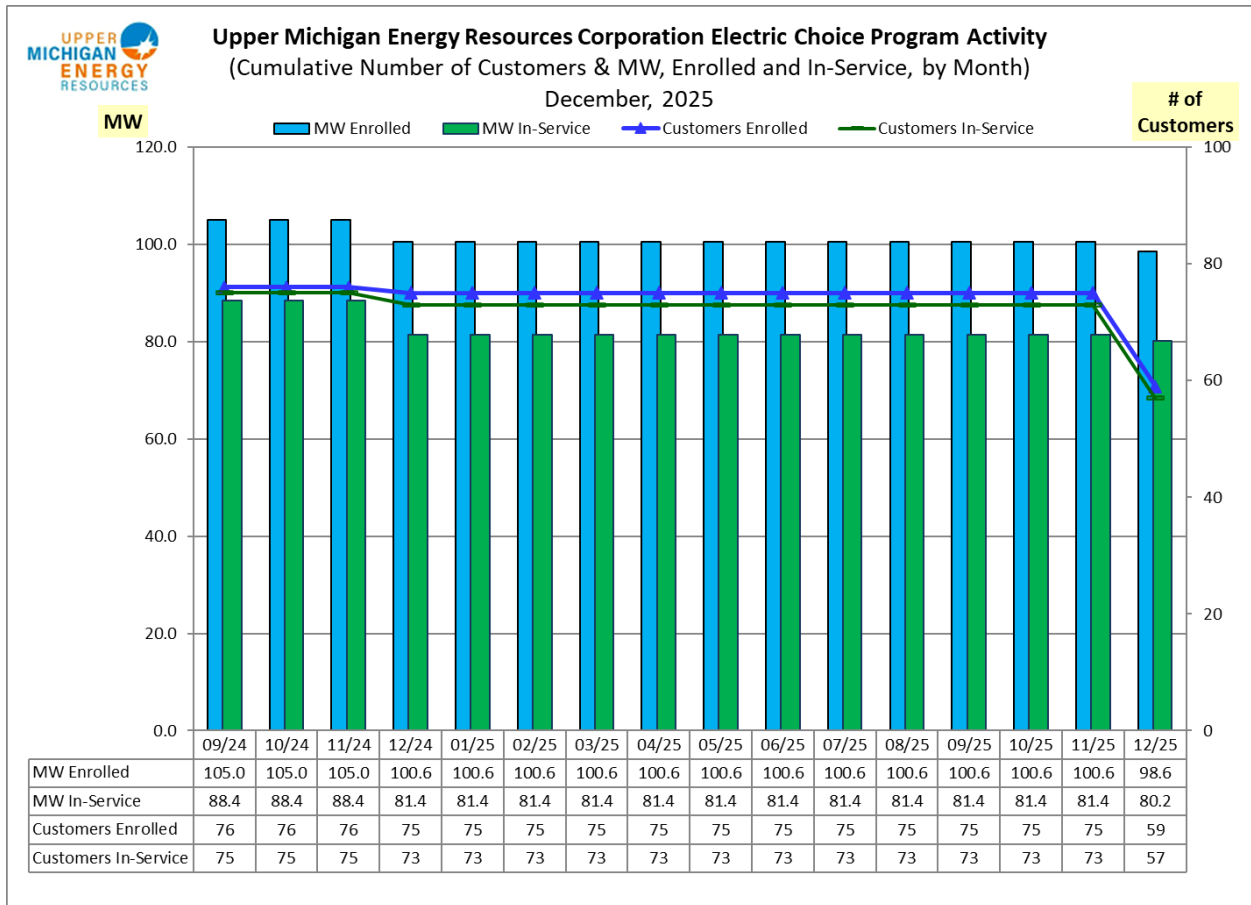
Figure 8

AES Customers in the UMERC Service Territory, Year End 2025

| AES Name | Number of Customers | | | | | | MW Served | | | | | |
|-------------------------|---------------------|------|------|------|------|------|-----------|------|------|------|------|------|
| | 2020 | 2021 | 2022 | 2023 | 2024 | 2025 | 2020 | 2021 | 2022 | 2023 | 2024 | 2025 |
| Constellation NewEnergy | 84 | 82 | 79 | 76 | 73 | 57 | 72.2 | 69 | 80.5 | 88.4 | 81.4 | 80.2 |
| Totals | 84 | 82 | 79 | 76 | 73 | 57 | 72.2 | 69 | 80.5 | 88.4 | 81.4 | 80.2 |

Figure 9

Upper Michigan Energy Resources Corporation Electric Choice Program Activity



Source: Upper Michigan Energy Resources Corporation, December 2025.

Figure 10

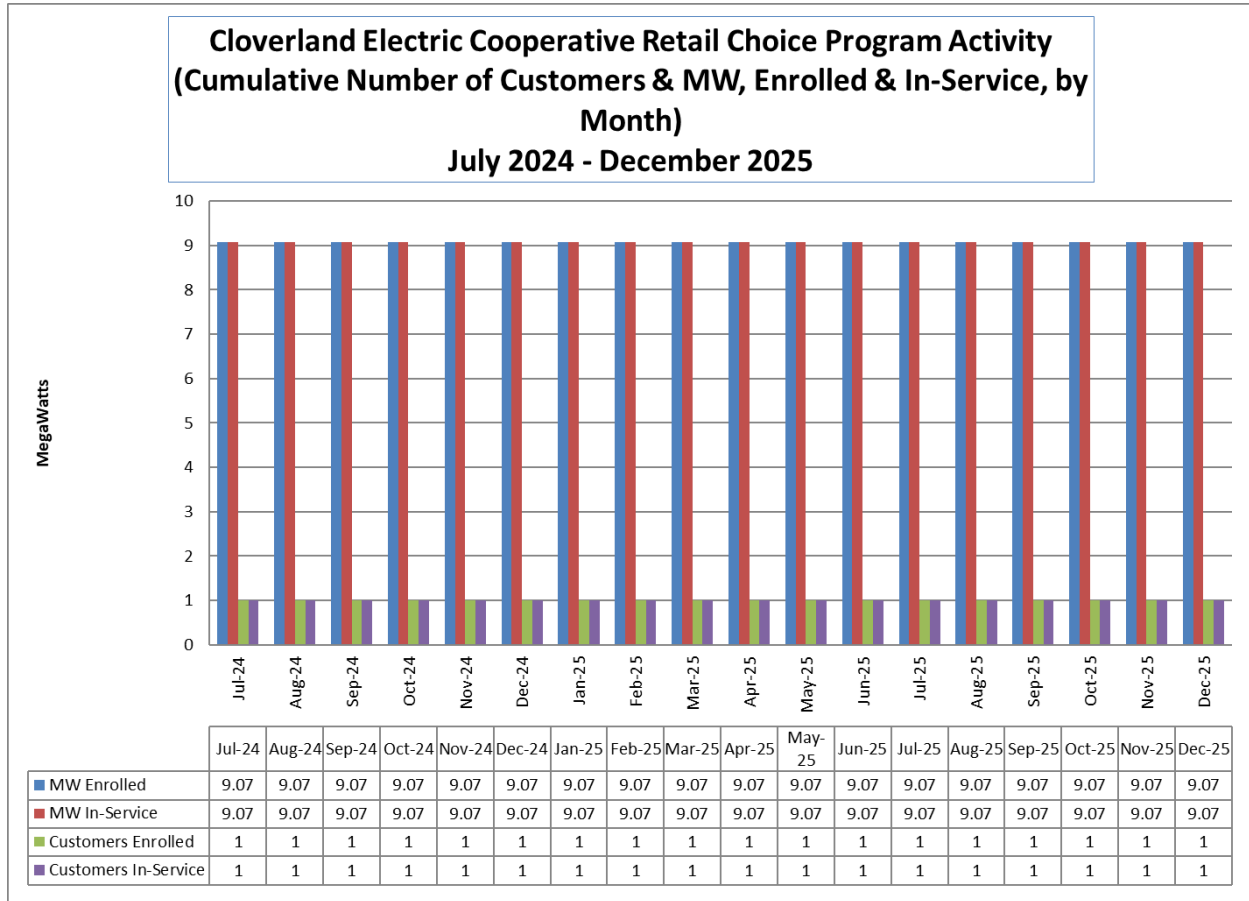
AES Customers in the Cloverland Service Territory, Year End 2025

| AES Name | Number of Customers | | | | | | MW Served | | | | | |
|-------------------|---------------------|------|------|------|------|------|-----------|------|------|------|------|------|
| | 2020 | 2021 | 2022 | 2023 | 2024 | 2025 | 2020 | 2021 | 2022 | 2023 | 2024 | 2025 |
| Spartan Renewable | 1 | 1 | 1 | 1 | 1 | 0 | 9.07 | 9.07 | 9.07 | 9.07 | 9.07 | 0 |
| ARC Power | | | | | | 1 | | | | | | 9.07 |
| Totals | 1 | 1 | 1 | 1 | 1 | 1 | 9.07 | 9.07 | 9.07 | 9.07 | 9.07 | 9.07 |

Note: Spartan Renewable relinquished their AES license on October 9, 2025.

Figure 11

Cloverland Electric Cooperative Retail Choice Program Activity



Source: Cloverland Electric Cooperative, December 2025.

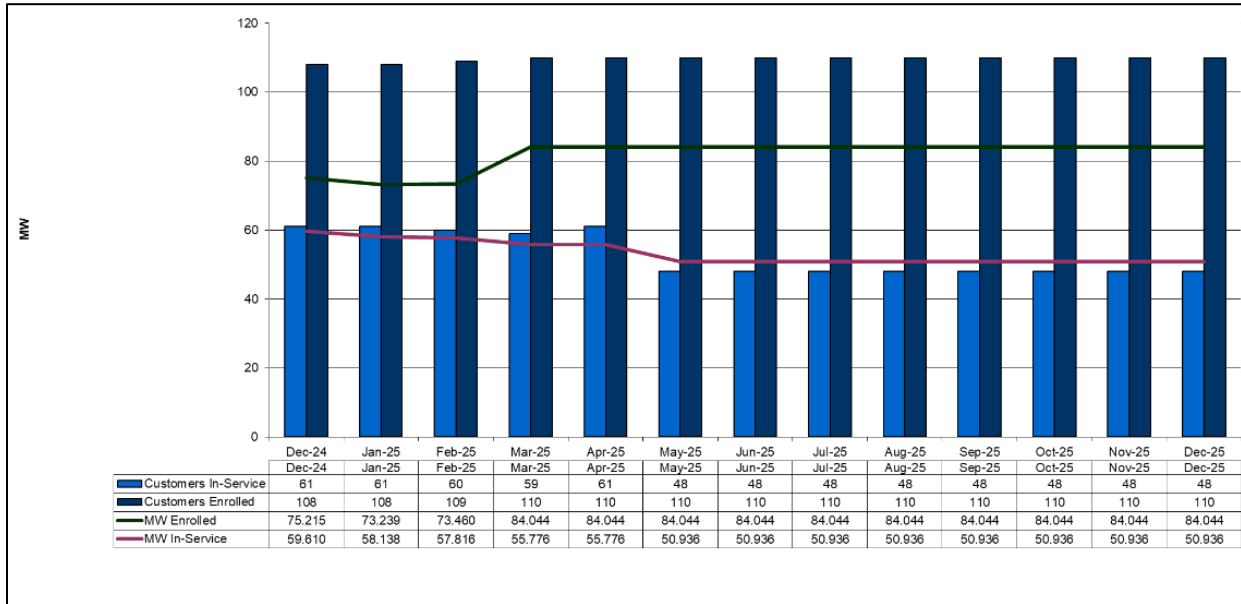
Figure 12

AES Customers in the Indiana Michigan Power Service Territory, Year End 2025

| AES Name | Number of Customers | | | | | MW Served | | | | |
|-------------------------------|---------------------|------|------|------|------|-----------|------|-------|-------|-------|
| | 2021 | 2022 | 2023 | 2024 | 2025 | 2021 | 2022 | 2023 | 2024 | 2025 |
| Constellation NewEnergy, Inc. | 48 | 47 | 47 | 61 | 48 | 55.1 | 54.6 | 55.42 | 59.61 | 50.94 |
| Totals | 48 | 47 | 47 | 61 | 48 | 55.1 | 54.6 | 55.42 | 59.61 | 50.94 |

Figure 13

Electric Choice Customer Participation



Source: Indiana Michigan Power, December 2025.

Appendix 2

Michigan Public Service Commission Orders Related to Implementation of Public Acts 141 of 2000, 286 and 295 of 2008 and 341 of 2016

Provisions in 2016 Act 341 Sec. 6w require all electric providers, including AESs, to demonstrate to the MPSC that they have enough resources to serve the anticipated needs of their customers four years forward. If an AES cannot or chooses not to arrange generating capacity to meet the new requirement, they would be subject to the SRM Charge. The SRM Charge is set by the MPSC and would be paid to the utility.

The following are SRM cases that impact AESs:

- Consumers Energy Company – **U-21585**, Order dated March 21, 2025.
- Upper Peninsula Power Company – **U-21555**, Order dated September 26, 2024.
- Upper Michigan Energy Resources Corporation – **U-21825**, Order dated April 24, 2025.
- Cloverland Electric Cooperative – **U-20508**, Order dated July 2, 2019.
- DTE Electric Company – **U-21534**, Order dated January 23, 2025.
- Indiana Michigan Power Company – **U-21461**, Order dated July 24, 2024.

U-21775 - In the matter, on the Commission's own motion, to open a docket for load serving entities in Michigan to file their capacity demonstrations as required by MCL 460.6w. On August 21, 2025, the Commission accepted in part the MPSC Staff's Report and adopted the recommendations with respect to the 2028-2029 planning year capacity demonstration.

U-21907 - In the matter, on the Commission's own motion, to open a docket for load serving entities in Michigan to file their capacity demonstrations as required by MCL 460.6w. On August 21, 2025, the Commission opened this docket for all electric providers, including AESs, to file their capacity demonstrations for the 2029/2030 planning year. The deadline for filing these demonstrations is February 24, 2026, and March 3, 2026, for utilities and March 17, 2026 for AESs.

U-18444 - In the matter on the Commission's own motion to open a contested case proceeding for determining the process and requirements for a forward locational requirement under MCL 460.6w. On October 11, 2017, the Commission opened a contested case proceeding for determining the process and requirement for a forward locational requirement under MCL 460.6w. In 2025, the case was brought to federal court for litigation.

U-15309 – In the matter, on the Commission's own motion, regarding the application of Spartan Renewable Energy, Inc. (Spartan) for a license as an alternative electric supplier. On October 9, 2025, Spartan's license was rescinded.

U-16651 – In the matter, on the Commission's own motion, regarding the regulatory reviews, determinations, and/or approvals necessary for Spartan Renewable Energy, Inc. (Spartan) to fully comply with Public Act 295 of 2008, as amended by 2016 PA 342. On October 9, 2025, Spartan's license was rescinded.

Appendix 3

Michigan Licensed Alternative Electric Suppliers

Michigan Licensed AES

| Company Name, Address, Contact Information | Case Number | Authorization Date |
|--|-------------|--------------------|
| AEP Energy, Inc. 2723 South State Street, Suite 150, Ann Arbor, MI 48104 Phone: 866-258-3782 Email: care@AEPenergy.com URL: www.AEPenergy.com | U-14764 | 2/9/2006 |
| American Rural Cooperative Power, Inc. 725 E Portage Ave., Sault Ste. Marie, MI 49783 Phone: 800-562-4953 Email: jake.brown@arcpowerusa.com URL: www.arcpowerusa.com | U-21650 | 8/22/2024 |
| BP Energy Retail Company LLC 705 South Main St., Suite 101A, Plymouth, MI 48170 Phone: 877-432-4530 URL: www.bp.com/retailenergy | U-17937 | 2/23/2016 |
| Calpine Energy Solutions f/k/a Noble Americas Energy Solutions LLC 2000 Town Center, Suite 1900, Southfield, MI 48075 Phone: 877-273-6772 Email: customerservice@CalpineSolutions.com URL: www.CalpineSolutions.com | U-13361 | 4/16/2002 |
| CMS ERM Michigan LLC One Energy Plaza, Suite 1060, Jackson, MI 49201-2277 Phone: 517-740-4502 URL: www.cmsenergy.com | U-12567 | 8/17/2000 |
| Constellation NewEnergy, Inc. 6 Parklane Blvd., Building 4, Suite 1060, Dearborn, MI 48152 Phone: 855-4651244 Email: home@constellation.com URL: www.constellation.com | U-13660 | 12/20/2002 |
| Dillon Power LLC 23409 Jefferson Ave., Suite 110, St. Clair Shores, MI 48080 Phone: 866-919-2679 Email: shaundillon@dillonpower.com URL: www.dillonpower.com | U-17723 | 1/13/2015 |
| Direct Energy Services LLC 110 W Michigan Ave., Suite 500, Lansing, MI 48933 Phone: 866-326-8559 Email: csdirectenergy@directenergy.com URL: www.directenergy.com | U-14724 | 12/20/2005 |
| Energy Harbor LLC f/k/a FirstEnergy Solutions 40600 Ann Arbor Rd. E, Suite 201, Plymouth, MI 48170 Phone: 888-245-6359 Email: firstchoice@fes.com URL: www.energyharbor.com | U-13244 | 1/08/2002 |

Michigan Licensed AES Continued

| Company Name, Address, Contact Information | Case Number | Authorization Date |
|--|-------------|--------------------|
| Energy International Power Marketing 6840 N. Haggerty Rd., Canton, MI 48187 Phone: 734-354-2000 Email: rfawaz@energyintl.com URL: https://energyintl.com/ | U-13280 | 2/01/2002 |
| Energy Services Providers, Inc. d/b/a Michigan Gas & Electric 930 State Street, Harbor Springs, MI 49740 Phone: 866-705-3610 Email: Customerservice@MIGandE.com URL: www.MIGandE.com | U-16912 | 4/6/2012 |
| ENGIE Gas & Power 25900 Greenfield Road, Suite 245, Oak Park, MI 48237 Phone: 855-327-6937 Email: epq.customercare@engie.com URL: www.engiepowerandgas.com | U-17492 | 1/23/2014 |
| Interstate Gas Supply, Inc. d/b/a IGS Energy 306 East Main Street, Suite 230, Niles, MI 49120 Phone: 888-993-0997 Email: choice@igsenergy.com URL: www.igsenergy.com | U-17243 | 6/28/2013 |
| Just Energy Solutions, Inc. f/k/a Commerce Energy Inc. 30300 Telegraph Rd. Suite 350, Bingham Farms, MI 48025 Phone: 866-587-8674 Email: cswest@justenergy.com URL: www.justenergy.com | U-13203 | 11/20/2001 |
| MidAmerican Energy Services LLC 39555 Orchard Hill Place, Suite 600, Novi, MI 48375 Phone: 800-432-8574 Email: support@midamericanenergyservices.com URL: www.midamericanenergyservices.com | U-17888 | 9/10/2015 |
| Nordic Energy Services LLC 2723 South State Street, Suite 150, Ann Arbor, MI 48104 Phone: 877-808-1022 Email: customerservice@nordicenergy-us.com URL: www.nordicenergy-us.com | U-17968 | 4/14/2016 |
| NRG Energy, Inc. 110 W Michigan Ave., Suite 500, Lansing, MI 48933 Phone: 866-348-4193 Email: DEBSales@directenergy.com URL: www.business.directenergy.com | U-13609 | 11/7/2002 |
| Texas Retail Energy LLC 208 N Capitol Ave., 3 rd Floor, Lansing, MI 48933 Phone: 866-532-0761 | U-17076 | 12/6/2012 |
| UP Power Marketing LLC 29639 Willow Rd., White Pine, MI 49971 Phone: 906-885-7100 Email: zach.halkola@traxys.com URL: www.traxys.com | U-14594 | 10/25/2007 |
| Wolverine Power Marketing Cooperative, Inc. 10125 W. Watergate Road, P. O. Box 100, Cadillac, MI 49601 Phone: 877-907-WPMC Email: sfrederick@wpmc.coop URL: www.wpmc.coop | U-12723 | 11/20/2000 |

This list is current as of December 2025. An up-to-date AES directory is maintained on the [MPSC web page](#).