

2014 Report on the Implementation of P.A. 295 Utility Energy Optimization Programs

In Compliance with Public Act 295 of 2008

John D. Quackenbush, Chairman
Greg R. White, Commissioner
Sally A. Talberg, Commissioner

MICHIGAN PUBLIC SERVICE COMMISSION
DEPARTMENT OF LICENSING AND REGULATORY AFFAIRS

November 26, 2014



Table of Contents

Executive Summary.....	1
Introduction	2
Program Offerings.....	2
Energy Savings Targets.....	3
EO Surcharges and Program Funding	4
Program Benefits	5
Residential Bill Information on Estimated Monthly Savings.....	7
State Administrator: Efficiency United	7
Programs for Low Income Customers.....	8
Self-Directed EO Program	9
Financial Incentive Mechanism.....	9
MPSC Energy Optimization Collaborative.....	10
Michigan Energy Measures Database.....	10
Revenue Decoupling	11
Conclusion.....	11
Appendix A1: 2011 and 2013 Energy Optimization Plan Filings	13
Appendix A2: 2012 Michigan Energy Optimization Programs.....	14
Appendix B: Energy Optimization Program Offerings by Utility	15
Appendix C: Energy Optimization Targets	18
Appendix D1: Energy Optimization Surcharges by Company	20
Appendix D2: Residential Energy Optimization Surcharges and Average Monthly Totals	23
Appendix D3: Energy Optimization Program Spending	25
Appendix E1: Commission Selected Administrator - Efficiency United Funding	27
Appendix E2: Commission Selected Administrator - Efficiency United Savings Targets	28
Appendix F: Process for Updating the Michigan Energy Measures Database.....	29

Executive Summary

Michigan's Energy Optimization (EO) standard, created under Public Act 295 of 2008 (PA 295 or the Act), requires all natural gas and electric utility providers in the state to implement programs to reduce overall energy usage by specified targets, in order to reduce the future cost of service to utility customers. This report complies with Section 95(2)(e) of the Act. Summaries of the report's major findings are as follows:

Energy Savings

For 2013, Michigan utility providers successfully complied with the energy savings targets laid out in PA 295. Providers met a combined average of 132 percent of their electric energy savings targets and 121 percent of their natural gas energy savings targets – one percent of retail sales for electric providers, and 0.75 percent of retail sales for gas providers. EO programs across the state accounted for electric savings totaling over 1.3 MWh (megawatt hours) and natural gas savings totaling over 4.41 million Mcf (thousand cubic feet) for program year 2013. Those numbers equate to approximately 121,000 households' annual electric usage, and around 58,000 households' annual natural gas usage.

2013 Cost of EO Programs and Lifecycle Benefits

Energy Optimization funding can be viewed as expenditures with a significant positive net-present-value (NPV) due to substantial reductions in the future utility cost-of-service resulting from energy savings. Aggregate Michigan EO program expenditures of \$253 million by all natural gas and electric utilities in 2013, are expected to result in lifecycle savings to customers of approximately \$948 million on a NPV basis. This means that for every dollar spent on EO programs in 2013, customers should expect to realize utility cost-of-service benefits of \$3.75. Such benefits are in the form of avoided capital and operational costs associated with incremental utility generation or purchased power, and additional indirect environmental and health benefits. Absent energy efficiency programs, customers would pay a portion of such direct and indirect costs, even customers who are able to hold their energy usage at or below current levels. For this reason, the EO program benefits will potentially reduce future costs of service to all utility customers, whether or not those customers made energy efficiency improvements through a utility efficiency program.

Introduction

In October 2008, Public Act 295 of 2008 was signed into law. Section 95(2)(e) of the Act requires that by November 30, 2009, and each year thereafter, the Michigan Public Service Commission (MPSC or Commission) is to submit to the standing committees of the Senate and House of Representatives with primary responsibility for energy and environmental issues, a report on the Commission's effort to implement energy conservation and energy efficiency programs or measures. The report may include any recommendations of the MPSC for energy conservation legislation.

Subpart B of PA 295 requires providers of electric or natural gas service to establish energy optimization (EO) programs for their customers. Annual energy savings targets for providers are specified in the Act. These targets ramped up to one percent of annual retail sales for electric providers and 0.75 percent of annual retail sales for natural gas providers in 2012. Targets shall be sustained for subsequent program years. Providers are required to file plans with the Commission detailing the programs they will utilize to meet their annual energy savings goals. Regulated providers are allowed to fund their programs through Commission approved EO surcharges, but must demonstrate that the program costs are reasonable and prudent, as well as cost-effective according to a standardized cost-benefit analysis specified in the Act.

In compliance with PA 295, on December 4, 2008, the Commission issued a temporary order in MPSC Case Number U-15800 to implement the provisions of the Act. The temporary order provided EO plan filing guidelines and resolved implementation issues for EO and renewable energy plans. EO plan submittals were required from all natural gas and electric utilities in Michigan. In 2013, there were 14 investor-owned natural gas, electric, or natural gas and electric combined utility providers (IOUs), 10 electric cooperatives, and 41 municipal electric utilities that filed EO plans, for a total of 65 natural gas and electric Energy Optimization Plans. A listing of case numbers, company names, and current plan status can be found in [Appendix A-1](#).

For the 2013 plan years, 53 of the 65 utilities in Michigan are formally coordinating the design and implementation of their EO programs in order to reduce administrative costs, create consistency among programs, and improve customer and contractor understanding of program offerings and administrative procedure. The remaining 12 utilities independently administered their own programs. To the extent feasible the utility providers that independently administer their programs try to align with the program design offered by the coordinated utility providers' programs to alleviate customer and contractor confusion. A chart of the utility providers and how they are aligned can be found in [Appendix A-2](#).

Program Offerings

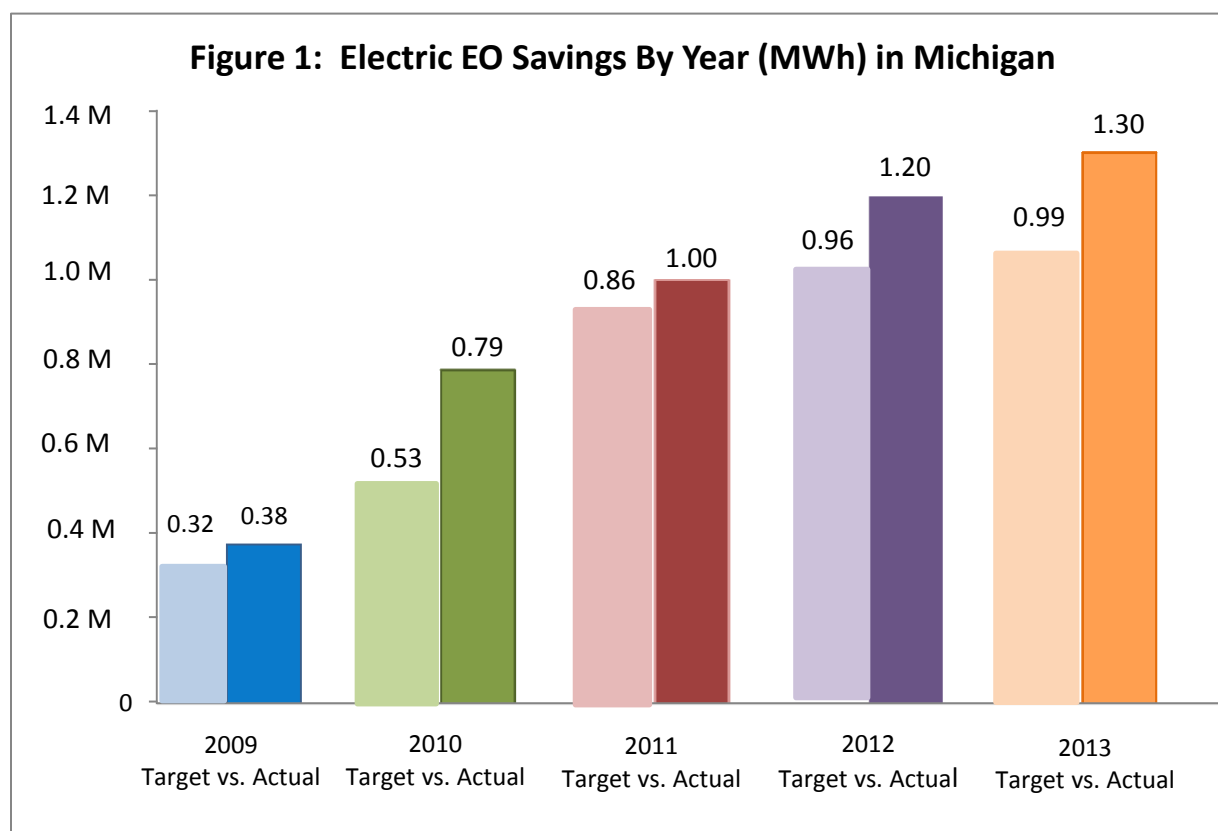
All natural gas and electric utility customers in Michigan are able to participate in energy efficiency programs offered by their local utility. New programs are continuously being introduced as pilot programs and enable utilities to phase in the implementation of new programs, expand existing programs and offer new features. In general, individual programs are divided into two broad categories:

residential and commercial/industrial. Residential programs consist of five major categories: lighting; heating, ventilating and air conditioning (HVAC); weatherization; energy education; and pilot programs. Commercial/Industrial offerings include prescriptive and custom programs. Prescriptive programs provide rebates for specific equipment replacement such as lighting, boilers, pumps, and compressors. Custom programs generally provide a rebate per kWh of electricity savings or per Mcf of natural gas savings for a comprehensive system or industrial process improvement. Specific program offerings for years 2009-2013 and implementation dates listed by utility can be found in [Appendix B](#).

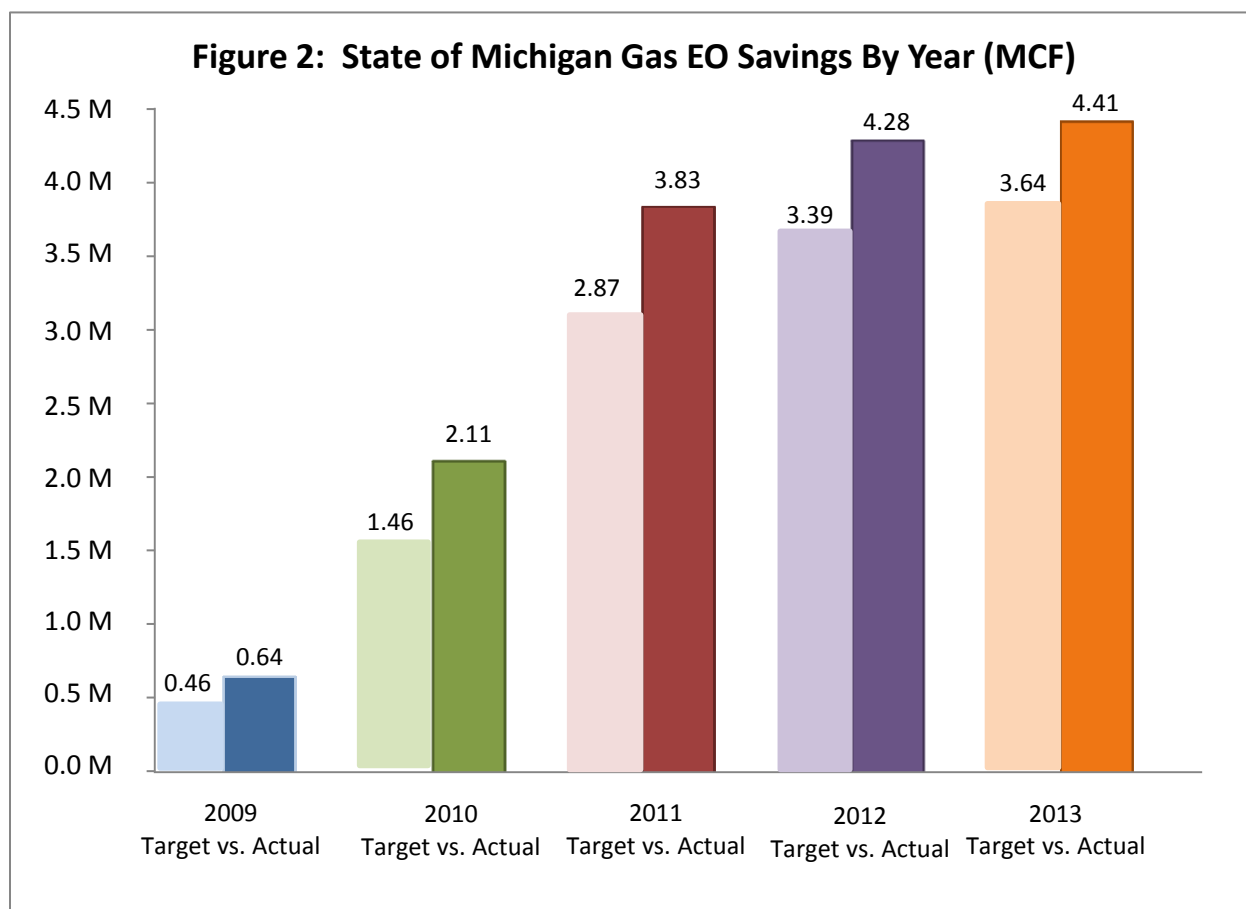
Energy Savings Targets

Section 77 of PA 295 provides annual energy savings targets for electric and natural gas utilities. The minimum savings targets are based upon a percentage of calendar-year retail sales for each utility. These energy savings targets increased progressively over the four year period from 2009 to 2012 at which time they are fixed at one percent for electric utilities and 0.75 percent for natural gas utilities annually.

In 2013, EO program savings achieved for electric utility providers were 132 percent of the target of the required one percent of retail sales. In 2013, the electric utility providers who are independently operated achieved 134 percent of their savings targets, municipal electric utility providers reached 132 percent of their savings targets, and the electric cooperatives met 113 percent of their targets. The target and actual electric savings for 2009 through 2013 are shown below in *Figure 1*.



The 2013 EO program savings achieved for natural gas utility providers were 121 percent of the required target. Consumer Energy’s Gas Division achieved 123 percent of its savings target and DTE Gas Company achieved 116 percent of its savings target. The smaller gas utilities cumulatively achieved 120 percent of their savings target. The total statewide target and actual gas savings for 2009 through 2013 are shown in *Figure 2*.



For a detailed spreadsheet of energy savings targets and achieved energy savings by utility provider, see [Appendix C](#).

EO Surcharges and Program Funding

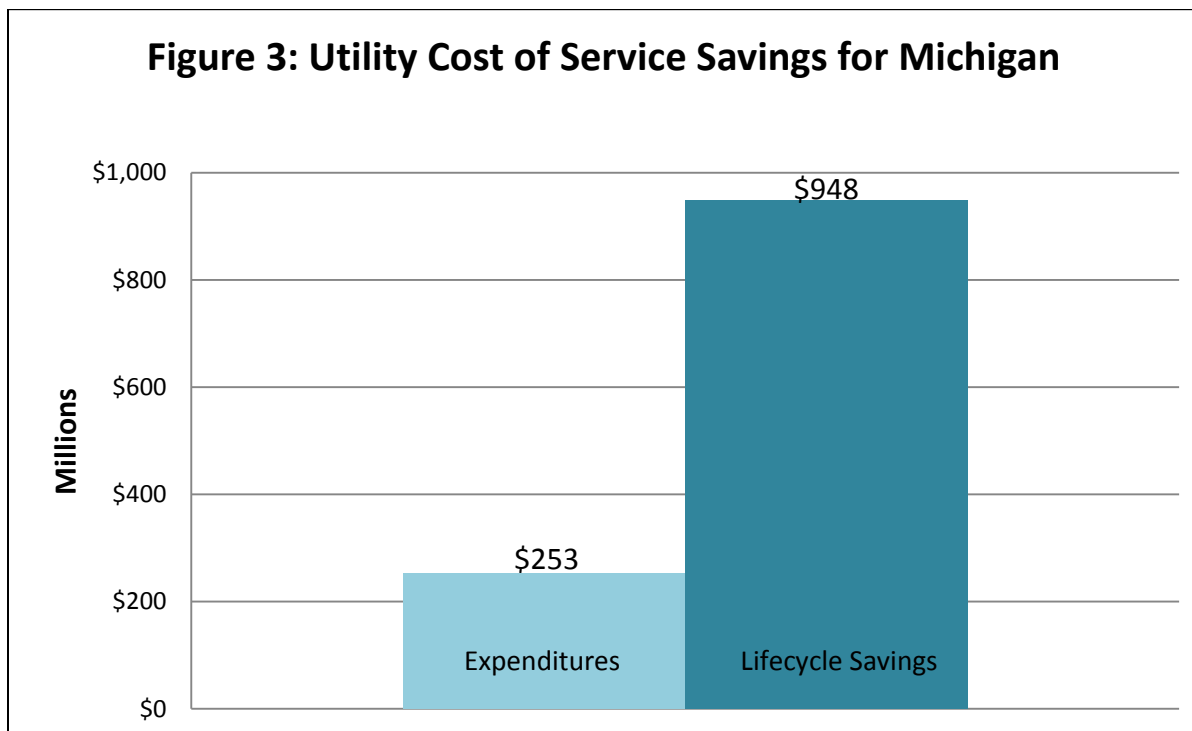
Section 71 of PA 295 requires utilities to specify necessary funding levels for the activities being proposed. Commission regulated utility providers are able to recover their EO program expenditures through a customer surcharge approved by the Commission. Under Section 89 of PA 295, surcharges approved by the Commission are assessed on either an energy usage basis or on a per meter basis. Generally, the larger, primary electric or natural gas transportation customer’s EO surcharge is based on a fixed per meter charge.

Section 73 of PA 295 requires the Commission to ensure that costs being recovered through surcharges are reasonable and prudent, and that the programs are cost effective as demonstrated by a Utility System Resource Cost Test (USRCT) which is defined in Section 13 of the Act. For additional detail on surcharges for all customer classes see [Appendix D1](#); estimates of typical residential surcharges are found in [Appendix D2](#). Detailed spending information by utility is included in [Appendix D3](#).

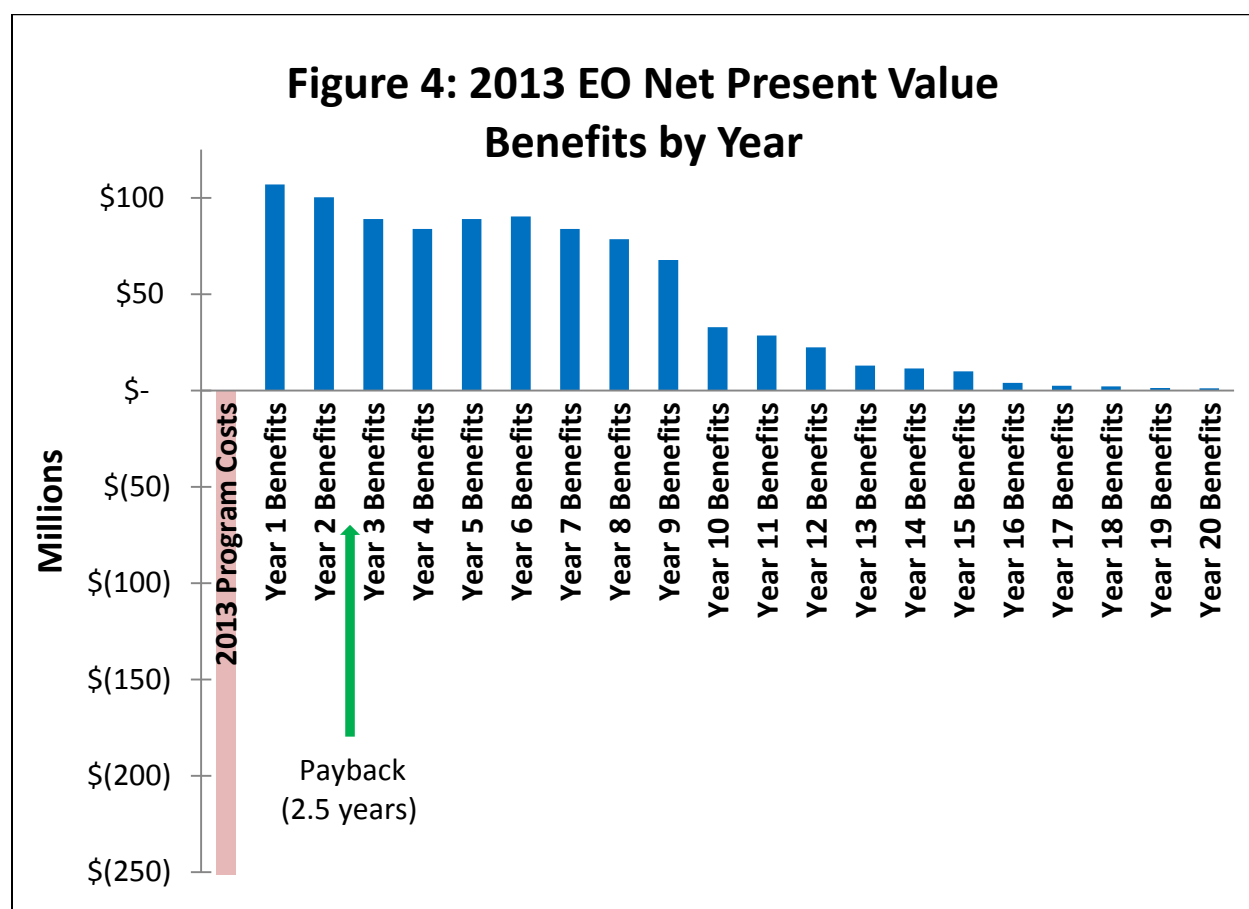
Program Benefits

In 2013, aggregate EO program expenditures of \$253 million by all natural gas and electric utilities in the state are estimated to result in lifecycle savings to customers of \$948 million. For every dollar spent on EO programs in 2013, customers should expect to realize benefits of \$3.75. Data provided to the Commission in EO provider annual reports indicate that EO resources were obtained at a statewide levelized cost of \$20/MWh, significantly cheaper than supply side options such as new natural gas combined cycle generation at \$60/MWh (Source: U.S. Energy Information Administration Annual Energy Outlook 2014).

The benefits of the EO program will flow through to customers over the mean lifecycle of all efficiency projects implemented by customers during the year. The direct benefits are in the form of reduced utility cost of service for production or purchase of electricity, or purchases of natural gas, which would otherwise be recovered in utility rates. Over the long run, the cumulative reduction in customer demand for electricity is expected to result in the deferral or reduction in the need to build new electric generation plants, the cost of which is allocated to all customers, whether or not they have participated in the EO program. The net present value of utility cost of service savings for EO expenditures statewide is shown in *Figure 3*.



These savings represent the avoided cost to utilities due to lower energy usage, and are calculated based on the energy savings identified for individual energy efficiency measures as reflected in the Michigan Energy Measures Database. The aggregate NPV of benefits for each year over the course of the expected useful life of all measures implemented during 2013, and simple payback (2.5 years), are shown in *Figure 4*.



Electric EO programs not only delay the need for building new generation, they also reduce emissions of environmental pollutants from existing generation. Fossil fuel generation plants in particular emit sulfur dioxide, nitrous oxides, mercury, other air toxics and particulate matter. Both the electric and natural gas EO programs also result in hundreds of millions of dollars in fuel cost savings that would have otherwise been spent in order to import energy into Michigan. Other economic impacts realized by EO programs include: additional spending by participating households and businesses for efficient equipment and services, increased demand for equipment and installations from local businesses, increased spending within the economy due to utility bill savings from reduced energy consumption, and increased production from participating businesses. In addition, the benefits flowing to Michigan utility customers via the EO program should help minimize the debt burden of consumers, reduce utility uncollectible expenses, and strengthen the competitive position of Michigan businesses.

Residential Bill Information on Estimated Monthly Savings

Section 45 of PA 295 describes information that a provider shall report to the residential customer on the monthly customer bill. Subsection (5)(c) requires ‘An estimated monthly savings, expressed in dollars and cents, for that customer to reflect the reduction in the monthly energy bill produced by the energy optimization program under this act’. The Commission has calculated the following statewide average monthly electric and natural gas savings estimates for use by small providers in lieu of company specific estimates:

The average electric residential customer is expected to save \$3.61 each month of the Energy Optimization program life.

The average natural gas residential customer is expected to save \$2.91 each month of the Energy Optimization program life.

State Administrator: Efficiency United

Section 91 of PA 295 created an option for electric and natural gas providers to offer energy optimization services through a program administrator selected by the Commission. Section 91(6) requires the administrator to be a ‘qualified nonprofit organization’ selected by the MPSC through a competitive bid process. To fund the program, which has been named Efficiency United (EU), the administrator is paid directly by the participating providers using funds collected from customers.

The Michigan Community Action Agency Association (MCAAA) was awarded the Efficiency United contract on August 10, 2009, following the required bid process. MCAAA is a membership organization of thirty local community action agencies covering the entire state of Michigan and had extensive experience in the provision of energy efficiency services. The initial contract period extended through December 31, 2011, with up to four optional one-year extensions. The Commission exercised two options to extend the contract for both the 2012 and 2013 program years. There were 20 utility providers within the EU program for program year 2012 and 2013. The Commission repeated the competitive bid process again in 2013, and re-awarded a multi-year contract to MCAAA in late 2013.

Efficiency United services and offerings are similar to, and coordinated with, those of other providers. Although EU program services are specifically exempt from meeting the PA 295 energy savings targets, equivalent contractual targets were imposed by the Commission. Targeted energy savings for 2013 were 75,693 MWh of electricity and 636,006 Mcf of natural gas; EU achieved actual savings of 91,591 MWh and 803,318 Mcf. Detailed information on participating utilities, funding, and energy savings targets can be found in [Appendix E1](#) and [Appendix E2](#).

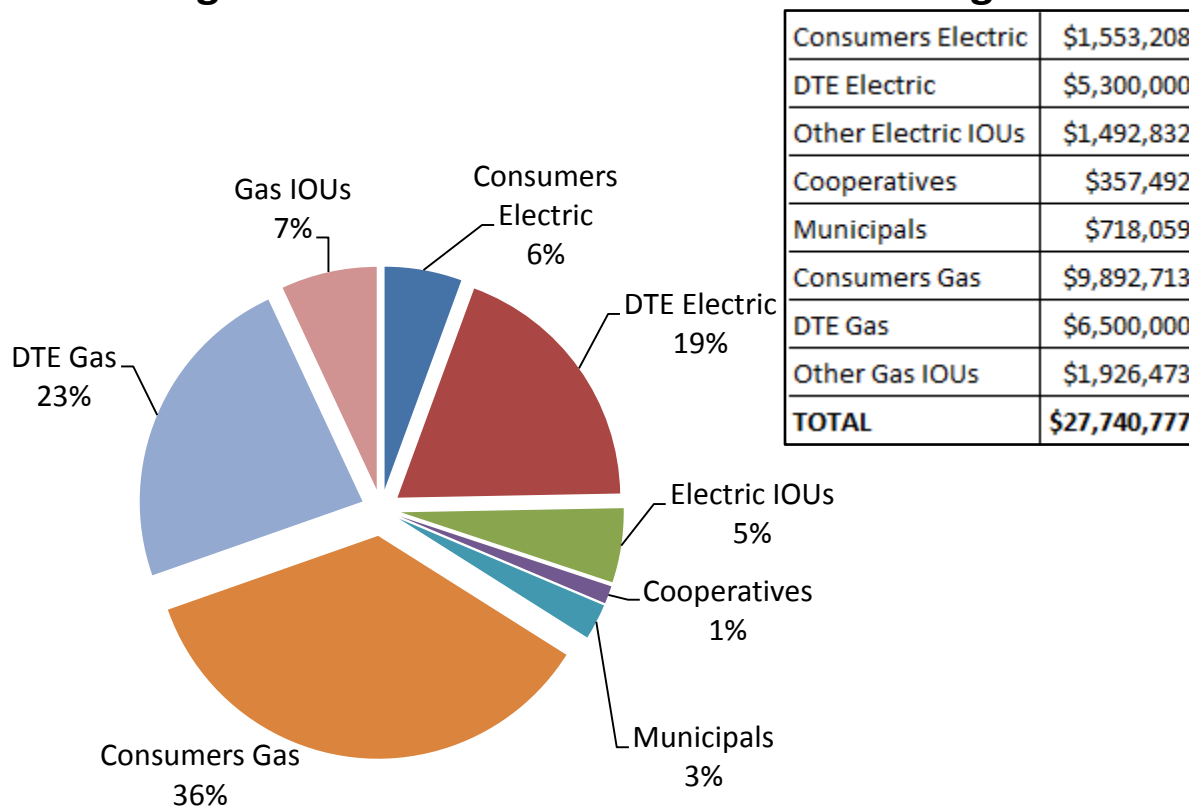
Because EU has to offer programs to customers in non-contiguous utility service areas throughout the State, it cannot take advantage of the economic and operational advantages that are available to utilities that are implementing their own programs. However, EU has reported reduced costs of implementation and believes they achieve operational efficiencies similar to Michigan’s largest utilities. This is no minor achievement, given that the program serves a geographically diverse set of

small utilities. The program continues to operate at performance levels seen in some of the best run programs both in Michigan and nationally.

Programs for Low Income Customers

Sections 71, 89, and 93 of PA 295 require utilities to offer EO programs for each customer class, including low income residential. Each customer class must contribute proportionally to low income program costs based on its allocation of the utility's total EO budget. Low income EO programs are excluded from the requirement to meet the cost-benefit test. Approximately 11% of the total 2013 EO program expenditures were allocated to income qualified customers. The residential customer class contributed 23% of the income qualified program. Most Michigan customers at or below 200% of the federal poverty level qualify for these special programs. The contribution to low income program costs by Michigan utilities in 2013 is shown in *Figure 5*.

Figure 5: Low Income EO Funds for Michigan



Self-Directed EO Program

Under Section 93 of PA 295, large electric customers that meet certain eligibility requirements may create and implement a customized EO plan, and thus be exempt from paying an EO surcharge to their utility provider. Electric customer eligibility to participate in the self-directed EO plans is determined by the customer's annual peak demand. The Act allows customers with at least 1 MW annual peak demand in the preceding year, or 5 MW aggregate at all of the customer's sites within a service provider's territory to participate. The number of customers enrolled to self-direct their own EO program has continued to drop, with 29 customers self-directing in 2013. Reported and projected energy savings for these self-directed large commercial and industrial customers are summarized in *Table 1*.

Table 1: Reported Energy Savings for Michigan Self-Directed Large Commercial and Industrial Customers

Provider	2009 Customers	2010 Customers	2011 Customers	2012 Customers	2013 Customers	2009 Reported Energy Reduction (MWh)	2010 Reported Energy Reduction (MWh)	2011 Reported Energy Reduction (MWh)	2012 Reported Energy Reduction (MWh)	2013 Reported Energy Reduction (MWh)
DTE Electric	26	26	13	7	6	12,486	18,488	7,835	9,535	6,115
Consumers Energy	30	30	16	13	11	8,515	12,343	7,404	7,118	5,936
Efficiency United	9	11	10	6	6	5,196	14,568	20,808	30,654	24,515
Cooperatives	3	3	4	3	3	899	1,498	1,442	1,262	533
Municipals	9	9	4	3	3	2,006	3,343	606	500	450
TOTAL	77	79	47	32	29	29,102	50,240	38,095	49,069	37,549

According to PA 295, self-directed customers with less than 2 MW annual peak demand per site or 10 MW in aggregate must utilize an approved energy optimization service company (EOSC) to design and implement their EO programs. Following a public hearing in 2010, the Commission enacted an approval process, as required by PA 295, for EOSCs. The approval process and application can be found on the Commission's website. At this time, no companies have applied for approval.

Financial Incentive Mechanism

Section 75 of PA 295 allows Commission regulated utilities to request a financial incentive for exceeding the energy savings targets in a given year. On September 29, 2009, the Commission authorized a performance incentive mechanism for DTE Electric (U-15806), DTE Gas (U-15890) and Consumers Energy (U-15805, U-15889). These performance incentives were reviewed and new incentives were requested from both DTE Energy and Consumers Energy, for program year 2013, in cases U-17049 and U-17138 respectively. The new incentive mechanisms address some of the barriers EO programs have been facing in terms of lost revenue from declining sales. The actual and anticipated incentives awarded for program years 2009-2013 are listed in *Table 2*. Both Indiana Michigan Power Company and SEMCO Energy Gas Company requested to implement their own programs and have the ability to qualify for a performance incentive mechanism. These performance incentive mechanisms were approved for the program years 2014-2015 in docket numbers U-17353 and U-17362 respectively. Total performance incentives awarded through 2013 are presented below in *Table 2*.

Table 2: Utility Performance Incentives Awarded or Anticipated through 2013

Program Year	Consumers Energy-Electric	Consumers Energy-Gas	DTE Energy-Electric	DTE Energy-Gas	Totals
2009	\$3,323,612	\$2,361,693	\$3,008,829	\$913,373	\$9,607,507
2010	\$5,076,731	\$3,407,064	\$6,200,000	\$2,400,000	\$17,083,795
2011	\$7,281,670	\$7,312,307	\$8,400,000	\$3,400,000	\$26,393,977
2012	\$10,027,210	\$7,282,721	\$10,500,000	\$4,300,000	\$32,109,931
2013*	\$10,364,556	\$7,166,544	\$11,237,246	\$3,848,020	\$32,616,366
Totals	\$36,073,779	\$27,530,329	\$39,346,075	\$14,861,393	\$117,811,576
<i>*Anticipated</i>					

MPSC Energy Optimization Collaborative

In Case Numbers U-15805 and U-15806, the Commission directed the MPSC Staff to establish a statewide energy optimization collaborative which requires the participation of all natural gas and electric providers and offers the opportunity for a variety of additional stakeholders to participate. The structure and goals of the EO collaborative were outlined in the Commission's 2009 report to the Legislature. A key goal reached by the collaborative was the reduction of the extent and cost of the formal contested hearing process through stakeholder consensus and industry peer review of standards and procedures. The collaborative identifies recommendations for improving energy optimization plans for all providers, offers program evaluation and support, and develops any necessary redesign improvements to energy efficiency programs. Program Design and Implementation, and Program Evaluation workgroups continued to meet throughout 2012 and 2013, as well as the MEMD Technical Subcommittee, to specifically focus on issues related to the MEMD.

The collaborative is overseen by a Steering Committee that includes six representatives from electric and natural gas providers. The Steering Committee meets quarterly to set agendas for collaborative meetings, and address any emerging issues related to the EO programs.

Michigan Energy Measures Database

Measurement and verification are essential tools in improving Energy Optimization programming. In 2009, Michigan began using a database of projected energy savings that was exclusively derived from other states' experience. By incorporating data derived from program implementation, and special studies, the database evolved into the Michigan Energy Measures Database (MEMD).

The objective of the MEMD is to provide users with accurate information on energy savings associated with technologies or measures that could be used in energy efficiency programs. The MEMD is also used to prioritize the allocation of funding toward these possible measures. For this critical function, the Commission acknowledges the importance of including Michigan-specific data in the MEMD. Thus, under the direction of Commission Staff, stakeholders are participating in monthly

collaborative meetings to update this database. The collaborative has developed an annual process for selecting the highest priority measures to update with Michigan specific data. For the selected measures, field studies are undertaken in customer homes and businesses using light loggers, sub-metering, and engineering analysis to obtain reliable measurement of the actual energy consumption. The process for updating the MEMD is outlined in *Appendix F*.

Revenue Decoupling

PA 295 requires the Commission to establish revenue decoupling mechanisms (RDMs) upon request by those natural gas utilities that have implemented an Energy Optimization program. The Act also requires the Commission to study the rate impacts on all classes of customers if the electric providers whose rates are regulated by the Commission are decoupled (Sec. 97(4) of PA 295).

Section 89(6) of PA 295 requires the Commission to establish RDMs for regulated natural gas utilities that implement an Energy Optimization program and that request such a mechanism. A gas utility must file a request for an RDM, although the Commission may authorize an alternative mechanism that it deems to be in the public interest. There are currently only two natural gas utilities that have a decoupling mechanism, DTE Gas (formerly Michigan Consolidated Gas) and Michigan Gas Utilities.

Conclusion

Energy Optimization programs have seen many successes since first being implemented due to continued efforts by utilities and their EO contractors and implementation allies. The 2013 program year, which is the subject of this report, is no exception, with most utilities meeting or exceeding energy savings targets.

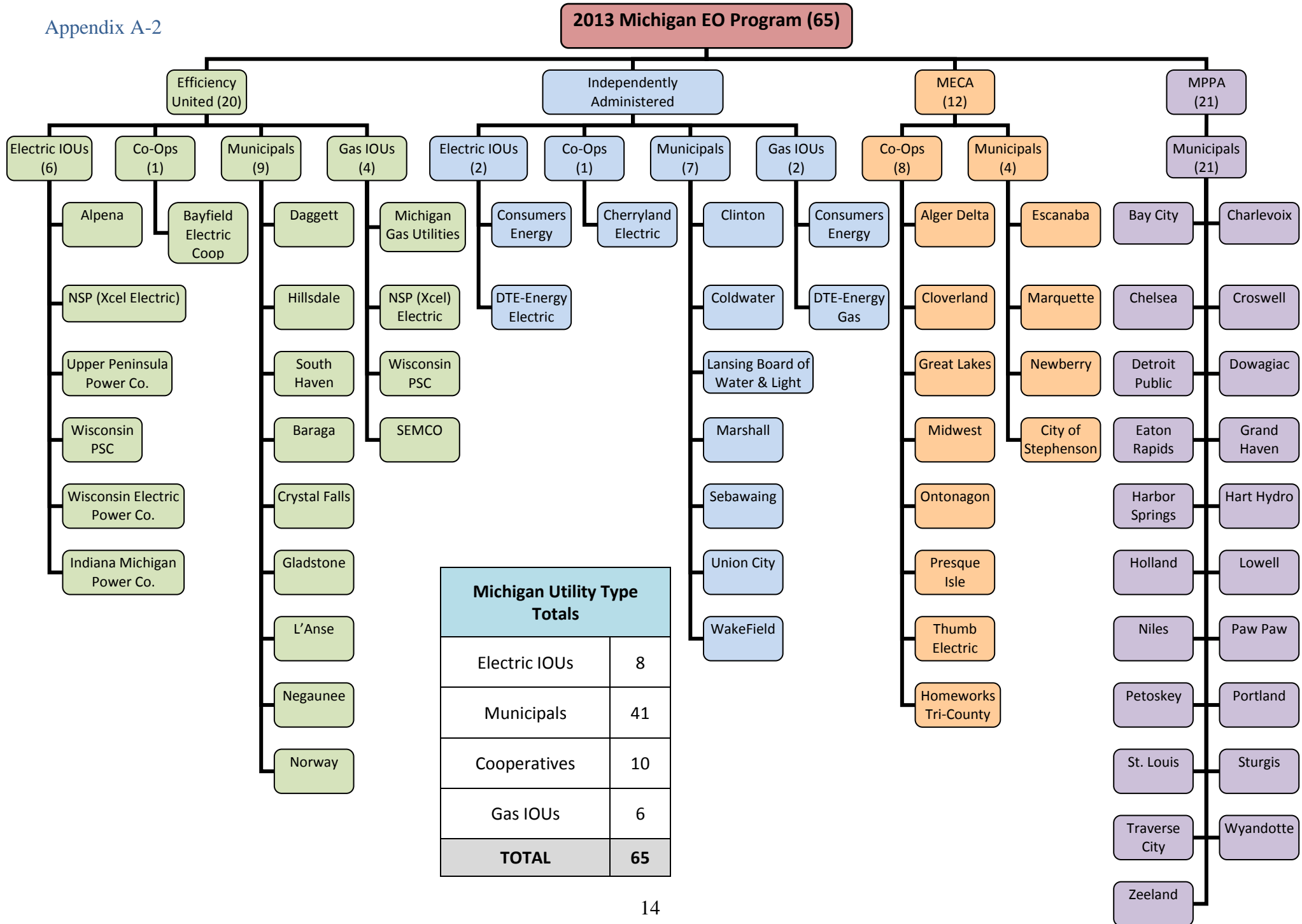
The Commission attributes much of the continuing success of Energy Optimization programs to the extensive evaluation work that is undertaken each year. An annual evaluation satisfies the statutory requirement for an independent certification of energy savings, providing ratepayers with confidence that programs will lower the cost of service, as promised. Importantly, annual evaluation includes a detailed analysis of the actual implementation of each program, to elicit improvements in program design, marketing methods, rebate/incentive processing, interaction with trade allies and customers, and customer satisfaction. This step is called “process evaluation” and is also a critical component of EO program success.

In addition, the Commission continually explores ways to modify the regulatory structure so as to reduce the cost of compliance, enhance the performance of small utilities, and balance the desire for low-cost efficiency measures that provide immediate bill savings, with the need for energy efficiency resources that are permanent, and thus capable of displacing higher-cost investment in future electric generation capacity.

The Commission recognizes utility customers are funding energy optimization programs, and the Commission will continue to work with utility providers to ensure good stewardship of those funds through cost-effective programs. The performance of EO programs in Michigan demonstrates that

energy efficiency expenditures will result in substantial cost-of-service reductions in future years. Based on the most current 2013 data, expenditures of \$253 million resulted in direct utility cost-of-service reductions of about \$948 million. Indirect benefits may also be recognized such as reduced exports of Michigan dollars for imports of fuel and purchased power; enhanced economic activity by Michigan energy efficiency businesses, contractors and vendors; reduced energy bills for customers, including businesses and residential customers; and environmental benefits.

2013 Biennial EO Plan Filings			
COMPANY		Plan Case #	Group
Electric IOUs			
1	Alpena Power Company	U-17350	Efficiency United
2	Consumers Energy Company	U-17351	Independent
3	DTE - Energy Electric	U-17352	Independent
4	Indiana Michigan Power Company	U-17353	Independent
5	Northern States Power Company-Wisconsin	U-17354	Efficiency United
6	Upper Peninsula Power Company	U-17355	Efficiency United
7	Wisconsin Public Service Corporation	U-17356	Efficiency United
8	Wisconsin Electric Power Company	U-17357	Efficiency United
Co-ops			
9	Alger Delta Cooperative Electric Association	U-17367	MI Electric Coop. Assoc.
10	Bayfield Electric Cooperative	U-17368	Efficiency United
11	Cherryland Electric Cooperative	U-17369	Independent
12	Cloverland Electric Cooperative	U-17364	MI Electric Coop. Assoc.
13	Great Lakes Energy Cooperative	U-17370	MI Electric Coop. Assoc.
14	Midwest Energy Cooperative	U-17365	MI Electric Coop. Assoc.
15	Ontonagon Co. Rural Electrification Assoc.	U-17371	MI Electric Coop. Assoc.
16	Presque Isle Electric and Gas Co-op	U-17372	MI Electric Coop. Assoc.
17	Thumb Electric Cooperative	U-17366	MI Electric Coop. Assoc.
18	Tri-County Electric Cooperative	U-17373	MI Electric Coop. Assoc.
Municipals			
19	Village of Baraga	U-17381	Efficiency United
20	City of Bay City	U-17382	MI Public Power Agency
21	City of Charlevoix	U-17383	MI Public Power Agency
22	Chelsea Department of Electric and Water	U-17384	MI Public Power Agency
23	Village of Clinton	U-17385	Independent
24	Coldwater Board of Public Utilities	U-17386	Independent
25	Croswell Municipal Light & Power Department	U-17387	MI Public Power Agency
26	City of Crystal Falls	U-17388	Efficiency United
27	Daggett Electric Department	U-17389	Efficiency United
28	Detroit Public Lighting Department	U-17390	MI Public Power Agency
29	City of Dowagiac	U-17391	MI Public Power Agency
30	City of Eaton Rapids	U-17392	MI Public Power Agency
31	City of Escanaba	U-17393	MI Electric Coop. Assoc.
32	City of Gladstone	U-17394	Efficiency United
33	Grand Haven Board of Light and Power	U-17395	MI Public Power Agency
34	City of Harbor Springs	U-17396	Efficiency United
35	City of Hart Hydro	U-17397	MI Public Power Agency
36	Hillsdale Board of Public Utilities	U-17398	Efficiency United
37	Holland Board of Public Works	U-17399	MI Public Power Agency
38	Village of L'Anse	U-17400	Efficiency United
39	Lansing Board of Water & Light	U-17401	Independent
40	Lowell Light and Power	U-17402	MI Public Power Agency
41	Marquette Board of Light and Power	U-17403	MI Electric Coop. Assoc.
42	Marshall Electric Department	U-17404	Independent
43	Negaunee Department of Public Works	U-17405	Efficiency United
44	Newberry Water and Light Board	U-17406	MI Electric Coop. Assoc.
45	Niles Utility Department	U-17407	MI Public Power Agency
46	City of Norway	U-17408	Efficiency United
47	City of Paw Paw	U-17409	MI Public Power Agency
48	City of Petoskey	U-17410	MI Public Power Agency
49	City of Portland	U-17411	MI Public Power Agency
50	City of Sebewaing	U-17412	Independent
51	City of South Haven	U-17413	Efficiency United
52	City of St. Louis	U-17414	MI Public Power Agency
53	City of Stephenson	U-17415	MI Electric Coop. Assoc.
54	City of Sturgis	U-17416	MI Public Power Agency
55	Traverse City Light & Power	U-17417	MI Public Power Agency
56	Union City Electric Department	U-17418	Independent
57	City of Wakefield	U-17419	Independent
58	Wyandotte Department of Municipal Service	U-17420	MI Public Power Agency
59	Zeeland Board of Public Works	U-17421	MI Public Power Agency
Gas IOUs			
60	Consumers Energy Company(filing joint w/electric)	U-17351	Independent
61	DTE - Energy Gas	U-17359	Independent
62	Michigan Gas Utilities Corporation	U-17360	Efficiency United
63	Northern States Power Co-Wisc.(filing joint w/elec)	U-17361	Efficiency United
64	SEMCO Energy, Inc.	U-17362	Independent
65	Wisconsin Public Serv. Corp.(filing jointly w/elec)	U-17363	Efficiency United



Utility	Sector	Program Type	Year Imp.	Implementation Contractors
INDEPENDENTLY ADMINISTERING				
IOUS				
Consumers	Residential	1 Appliance Recycling	2009	JACO Environmental
		2 Multifamily Direct Install	2009	ICF
		3 Income Qualified	2009	CLEAResult
		4 Energy Education	2009	National Energy Foundation
		5 Energy Star Lighting	2009	ICF
		6 Energy Star Appliances	2009	ICF
		7 HVAC & Water Heating	2009	ICF
		8 New Construction	2009	CLEAResult
		9 Existing Home Retrofit	2010	ICF
		10 Residential Pilots	2009	ICF
	C & I	1 Custom Business Solutions Program	2009	DNV-GL
		2 Comprehensive Business Solutions	2009	DNV-GL
		3 Small Business Direct Install	2009	DNV-GL
		4 Business Pilots	2009	DNV-GL
Consumers Gas	Residential	1 Appliance Recycling	2009	JACO Environmental
		2 Multifamily Direct Install	2009	ICF
		3 Income Qualified	2009	CLEAResult
		4 Energy Education	2009	National Energy Foundation
		5 Energy Star Lighting	2009	ICF
		6 Energy Star Appliances	2009	ICF
		7 HVAC & Water Heating	2009	ICF
		8 New Construction	2009	CLEAResult
		9 Existing Home Retrofit	2010	ICF
		10 Residential Pilots	2009	ICF
	C & I	1 Custom Business Solutions Program	2009	DNV-GL
		2 Comprehensive Business Solutions	2009	DNV-GL
		3 Small Business Direct Install	2009	DNV-GL
		4 Business Pilots	2009	DNV-GL
DTE - Energy Electric	Residential	1 Energy Star	2009	ICF
		2 Audit & Weatherization	2009	CLEAResult and SEEL
		3 HVAC	2009	ICF
		4 Appliance Recycling	2009	JACO Environmental
		5 Multifamily Direct Install	2009	SEEL
		6 New Construction	2009	CLEAResult
		7 Education	2009	Internal
		8 Pilot Programs	2009	Internal
		9 Low Income	2009	CLEAResult
	C & I	1 Prescriptive	2009	DNV-GL
		2 Custom Business Solutions Program	2009	DNV-GL
		3 New Construction	2009	DNV-GL
		4 RFP	2009	DNV-GL
		5 Education	2009	Internal
		6 Pilot Programs	2009	Internal
DTE - Energy Gas	Residential	1 Energy Star Products	2009	ICF
		2 Residential HVAC	2009	ICF
		3 Multifamily	2009	SEEL
		4 Audit and Weatherization	2009	CLEAResult & SEEL
		5 New Home Construction	2009	CLEAResult
		6 Low Income Education	2009	Internal
		7 Education	2009	Internal
		8 Pilots	2009	Internal
	C & I	1 Prescriptive	2009	DNV-GL
		2 Custom	2009	DNV-GL
		3 Education	2009	Internal
		4 Pilots	2009	Internal

Utility	Sector	Program Type		Year Imp.	Implementation Contractors
Co-Ops					
Cherryland	Residential	1	Residential Low Income	2011	Northwest Community Action Agency
		2	Efficient Lighting Program	2011	Internal
		3	Refrigerator/Freezer Turn-In/Recycle	2011	Internal
		4	HVAC - Water Heater Program	2011	Internal
		5	Residential Energy Star Program	2011	Internal
		6	Residential Home Audit Program	2011	Internal
		7	Community Solar	2013	Internal
	C & I	1	Commercial and Industrial Prescriptive Incentive	2011	Internal
		2	Business Education Services	2011	Internal
Municipals					
Lansing Board Of Water & Light (BWL)	Residential	1	Efficient Lighting	2010	Internal
		2	Refrigerator/Freezer Recycling	2009	Franklin Energy
		3	Education Services	2009	Internal
		4	Residential Appliances and HVAC	2010	Franklin Energy
		5	Residential Multi-Family In-Unit Efficiency	2010	Franklin Energy
		6	Residential Low Income	2009	Community Action Agency
		7	Pilot and Emerging Technology	2009	Franklin Energy
	C & I	1	Multi-Family Common Area	2009	Franklin Energy
		2	Educational Services	2009	Internal
		3	Prescriptive Incentive Program	2010	Internal
		4	Custom Incentive Program	2009	Community Action Agency
		5	Educational Services	2009	Internal
		6	Pilot and Emerging Technology	2009	Internal
Municipals- MPPA Collaborative					
Baraga, Bay City, Charlevoix, Chelsea, Clinton, Coldwater, Croswell, Crystal Falls, Detroit Public Lighting, Dowagiac, Eaton Rapids, Gladstone, Grand Haven, Harbor Springs, Hart Hydro, Hillsdale, Holland, Village of L'anse, Lowell, Marshall, Negaunee, Niles, Norway, Paw Paw, Petoskey, Portland, Sebewaing, South Haven, Saint Louis, Stephenson, Sturgis, Traverse City Light and Power, Union City Electric, Wakefield, Wyandotte, Zeeland	Residential	1	Residential Low Income	2011	Michigan Community Action
		2	Refrigerator /Freezer Turn-In and Recycling Program	2011	Franklin Energy
		3	Residential Education Services	2011	Franklin Energy
		4	Residential HVAC and Appliances	2011	Internal
		5	Audit and Weatherization (on-line audits)	2011	Internal
		6	Residential Multi-Family In-Unit Efficiency	2011	Internal
		7	Electric Water Heater Saver Kits	2011	Internal
		8	Pilot/Emerging Technology Program	2011	Franklin Energy
	C & I	1	C&I Prescriptive Incentive Program	2011	Franklin Energy
		2	C&I Custom Incentive Program	2011	Internal
		3	Multi-Family Common Area Program	2011	Internal
		4	Business Education Services	2011	Northwest Community Action
		5	Pilot/Emerging Technology Program	2011	Franklin Energy
Efficiency United					
Electric Providers: Alpena Power Co., Bayfield Electric Coop., Daggett, Cloverland/Edison Sault, Indiana Michigan Power, UPPCO, We Energies, WPSC, Xcel Energy, Gas Providers: MGU Corp., SEMCO, WPSC, Xcel Energy	Residential	1	Low Income	2010	Michigan Community Action
		2	Residential Energy Star Program	2010	CLEARResult
		3	Appliance Recycling	2010	JACO Environmental
		4	Online Audit Program	2010	Enercom
		5	HVAC	2010	CLEARResult
		6	Audit Weatherization Program	2011	CLEARResult
		7	Multi-Family	2010	CLEARResult
		9	New Construction	2010	CLEARResult
		9	Education	2010	CLEARResult
		10	Pilots	2010	CLEARResult
	C & I	1	Prescriptive	2010	Franklin Energy
		2	Custom	2010	Franklin Energy
		3	Education	2010	Franklin Energy
		4	Pilots	2010	Franklin Energv

Utility	Sector	Program Type		Year Imp.	Implementation Contractors
MECA					
Co-Ops - MECA					
Alger Delta, Great Lakes, Midwest Energy, Ontonagon, Presque Isle, Thumb, Homeworks Tri-County	Residential	1	Residential Energy Star Program	2011	CLEAResult
		2	Residential Low Income Programs	2011	CLEAResult
		3	Residential Home Audit Program	2011	CLEAResult
		4	Residential Farm Services	2011	CLEAResult
		5	Residential Appliance Recycling Programs	2011	JACO Environmental
		6	Residential Education Services	2011	CLEAResult
		7	Residential Efficient HVAC Program	2011	CLEAResult
		8	Residential Pilot Programs	2011	Franklin Energy
	C & I	1	Commercial Prescriptive Programs	2011	Franklin Energy
		2	Industrial Prescriptive Programs	2011	Franklin Energy
		3	C&I Educational Programs	2011	Franklin Energy
		4	C&I Pilot Programs	2011	Franklin Energy
Municipals - MECA					
Escanaba, Marquette, Newberry, Stephenson	Residential	1	Residential Energy Star Program	2011	CLEAResult
		2	Residential Low Income Programs	2011	CLEAResult
		3	Residential Home Audit Program	2011	CLEAResult
		4	Residential Farm Services	2011	CLEAResult
		5	Residential Appliance Recycling Programs	2011	JACO Environmental
		6	Residential Education Services	2011	CLEAResult
		7	Residential Efficient HVAC Program	2011	CLEAResult
		8	Residential Pilot Programs	2011	Franklin Energy
	C & I	1	Commercial Prescriptive Programs	2011	Franklin Energy
		2	Industrial Prescriptive Programs	2011	Franklin Energy
		3	C&I Educational Programs	2011	Franklin Energy
		4	C&I Pilot Programs	2011	Franklin Energy

Appendix C - Energy Optimization Targets

% of MWH Sales				0.30%			0.50%			0.75%		
	2009 Target	2009 Actual	% Achieved	2010 Target	2010 Actual	% Achieved	2011 Target	2011 Actual	% Achieved			
Electric IOUs												
1 Alpena	973	16	2%	2,586	3,859	149%	2,419	3,453	143%			
2 Consumers Energy	107,939	145,118	134%	178,509	251,187	141%	255,039	353,006	138%			
3 DTE Energy Electric	160,000	203,000	127%	227,153	402,995	177%	477,000	519,000	109%			
4 Indiana Michigan	9,159	197	2%	24,110	25,157	104%	22,427	21,626	96%			
5 UP Power	2,509	350	14%	6,750	6,357	94%	6,363	7,749	122%			
6 Wisconsin Electric	8,414	44	1%	21,614	21,722	100%	19,800	20,745	105%			
7 WPSCorp	876	2	0%	2,271	2,474	109%	2,093	2,529	121%			
8 XCEL Energy	413	0	0%	1,100	1,407	128%	1,031	1,473	143%			
Subtotal Electric IOUs	290,283	348,727	120%	464,093	715,158	154%	786,172	929,580	118%			
Electric Cooperatives												
9 Alger Delta	303	22	7%	486		0%	448	225	50%			
10 Bayfield	1	0	0%	2	3	150%	14	19	138%			
11 Cherryland	791	751	95%	1,777	2,037	115%	2,699	3,889	144%			
12 Cloverland/Edison S.	589	46	8%	1,610	1,500	93%	1,502	532	35%			
13 Great Lakes	4,265	286	7%	10,327	10,282	99.6%	9,887	5,002	51%			
14 Midwest	1,618	234	14%	4,390	4,509	103%	4,377	2,191	50%			
15 Ontonagon	160	5	3%	210	173	82%	189	212	112%			
16 Presque Isle	886	34	4%	1,917	2,187	114%	1,785	1,286	72%			
17 Thumb	529	64	12%	1,714	1,087	63%	1,121	663	59%			
18 Tri-County	1,092	262	24%	2,425	5,002	206%	2,337	1,084	46%			
Subtotal Electric Coops	10,234	1,704	17%	24,858	26,780	108%	24,359	15,103	62%			
Municipals												
19 Baraga	60	97	162%	84	7	8%	226	185	82%			
20 Bay City	896	715	80%	1,473	2,251	153%	1,937	2,317	120%			
21 Charlevoix	203	79	39%	450	262	58%	678	423	62%			
22 Chelsea	266	409	154%	365	359	98%	696	1,221	175%			
23 Clinton	146	173	118%	113	113	100%	161	164	102%			
24 Coldwater	865	37	4%	2,342	1,379	59%	2,342	1,409	60%			
25 Croswell	110	247	225%	133	230	173%	188	180	96%			
26 Crystal Falls	50	718	1436%	60	459	765%	88	92	105%			
27 Dagget Electric Co.	5	7	140%	12	19	158%	11	19	167%			
28 Detroit PLD*	2	2	100%	1,587	224	14%	2,986	2,286	77%			
29 Dowagiac	239	52	22%	547	521	95%	543	766	141%			
30 Eaton Rapids	154	61	40%	347	298	86%	449	470	105%			
31 Escanaba	427	0	0%	1,212	1,171	97%	1,104	1,072	97%			
32 Gladstone	97	407	420%	182	267	147%	308	136	44%			
33 Grand Haven	873	921	105%	1,373	1,591	116%	1,878	2,211	118%			
34 Harbor Springs	112	150	134%	171	167	98%	290	248	86%			
35 Hart	115	101	88%	196	193	98%	299	140	47%			
36 Hillsdale	429	415	97%	726	1,216	167%	536	643	120%			
37 Holland	3,089	3,382	109%	4,849	5,481	113%	6,477	7,762	120%			
38 L'Anse	42	123	293%	79	10	13%	162	600	370%			
39 LBWL	6,831	6,972	102%	11,165	11,524	103%	15,877	17,587	111%			
40 Lowell	180	289	161%	226	269	119%	432	578	134%			
41 Marquette	872	0	0%	2,534	3,198	126%	2,435	1,827	75%			
42 Marshall	357	363	102%	579	835	144%	605	1,129	187%			
43 Negaunee	67	274	409%	92	85	92%	199	116	58%			
44 Newberry	17	0	0%	148	124	84%	144	155	108%			
45 Niles	440	234	53%	802	718	90%	1,122	1,052	94%			
46 Norway	94	120	128%	159	76	48%	317	313	99%			
47 Paw Paw	116	109	94%	201	115	57%	373	177	47%			
48 Petoskey	232	880	379%	404	599	148%	809	477	59%			
49 Portland	107	103	96%	182	210	115%	240	155	65%			
50 Sebewaing	125	531	425%	158	995	630%	203	305	150%			
51 South Haven	411	423	103%	688	610	89%	1,135	909	80%			
52 St. Louis	120	77	64%	242	251	104%	294	275	94%			
53 Stephenson	17	0	0%	49	47	96%	45	47	104%			
54 Sturgis	720	797	111%	1,198	1,249	104%	1,937	1,792	93%			
55 Traverse City	991	1,735	175%	1,149	1,945	169%	1,704	2,650	156%			
56 Union City	47	53	113%	79	197	251%	118	129	109%			
57 Wakefield	38	0	0%	103	237	230%	44	49	111%			
58 Wyandotte	2,464	3,034	123%	2,388	3,832	160%	1,515	1,803	119%			
59 Zeeland	1,099	1,122	102%	1,335	2,202	165%	1,472	1,884	128%			
Subtotal Municipals	23,525	25,212	107%	40,182	45,536	113%	52,379	55,753	106%			
Statewide Electric Totals	324,042	375,643	116%	529,133	787,474	149%	862,910	1,000,437	116%			

2012 Target does not include previous year carryover amount.

*DPLD filed bankruptcy

% of MCF Sales				0.10%			0.25%			0.50%		
	2009 Target	2009 Actual	% Achieved	2010 Target	2010 Actual	% Achieved	2011 Target	2011 Actual	% Achieved			
Gas Companies												
1 Consumers Energy	299,623	396,783	132%	743,943	937,915	126%	1,263,564	2,039,609	161%			
2 DTE - Gas	164,003	250,680	153%	405,110	792,000	196%	1,164,000	1,364,000	117%			
3 MGU				105,323	122,432	116%	150,300	111,990	75%			
4 SEMCO Energy	Combined 2009-2010 as these providers were part of Efficiency United. Two year targets were a total of .10% + .25%			195,859	243,050	124%	280,158	305,433	109%			
5 WPSCorp				5,301	5,788	109%	7,515	7,966	106%			
6 XCEL Energy				3,126	9,061	290%	4,481	7,009	156%			
Statewide Gas Totals	463,626	647,463	140%	1,458,662	2,110,246	145%	2,870,018	3,836,008	134%			

Appendix C - Energy Optimization Targets cont.

% of MWH Sales	1%			1%		
	2012 Target	2012 Actual	% Achieved	2013 Target	2013 Actual	% Achieved
Electric IOUs						
1 Alpena	3,244	4,251	131%	3,219	5,352	166%
2 Consumers Energy	333,360	409,353	123%	335,498	473,045	141%
3 DTE Energy Electric	455,000	611,000	134%	471,000	614,000	130%
4 Indiana Michigan	29,403	30,999	105%	28,743	34,572	120%
5 UP Power	8,272	9,494	115%	8,137	11,195	138%
6 Wisconsin Electric	26,358	26,499	101%	26,709	28,492	107%
7 WPSCorp	2,739	3,018	110%	2,734	3,466	127%
8 XCEL Energy	1,378	2,074	151%	1,385	1,833	132%
Subtotal Electric IOUs	859,755	1,096,689	128%	877,425	1,171,955	134%
Electric Cooperatives						
9 Alger Delta	588	658	112%	505	678	134%
10 Bayfield	2	2	118%	2	3	150%
11 Cherryland	3,751	3,798	101%	3,661	3,667	100%
12 Cloverland/Edison S.	8,149	7,365	90%	9,207	9,548	104%
13 Great Lakes	13,240	10,341	78%	16,032	19,479	122%
14 Midwest	5,875	5,152	88%	6,553	6,880	105%
15 Ontonagon	247	253	102%	239	678	284%
16 Presque Isle	2,362	1,981	84%	2,708	3,176	117%
17 Thumb	1,507	1,689	112%	1,311	1,784	136%
18 Tri-County	3,121	2,483	80%	3,747	3,852	103%
Subtotal Electric Coops	38,842	33,722	87%	43,965	49,745	113%
Municipals						
19 Baraga	188	191	102%	184	233	127%
20 Bay City	2,860	3,037	106%	3,124	3,044	97%
21 Charlevoix	603	643	107%	608	693	114%
22 Chelsea	366	479	131%	738	893	121%
23 Clinton	213	203	95%	227	241	106%
24 Coldwater	2,589	2,104	81%	2,589	2,056	79%
25 Croswell	357	489	137%	355	199	56%
26 Crystal Falls	164	191	116%	162	325	201%
27 Dagget Electric Co.	15	26	181%	14	16	114%
28 Detroit PLD*	865	592	68%	0	0	
29 Dowagiac	417	538	129%	634	745	118%
30 Eaton Rapids	455	607	133%	331	830	251%
31 Escanaba	1,428	1,338	94%	1,471	1,614	110%
32 Gladstone	328	412	126%	321	341	106%
33 Grand Haven	2,223	1,912	86%	2,674	3,198	120%
34 Harbor Springs	358	369	103%	375	409	109%
35 Hart	394	265	67%	421	562	133%
36 Hillsdale	1,275	1,508	118%	1,212	1,572	130%
37 Holland	7,948	8,116	102%	9,821	10,934	111%
38 L'Anse	137	174	127%	132	166	126%
39 LBWL	19,280	23,147	120%	18,363	26,757	146%
40 Lowell	483	503	104%	548	444	81%
41 Marquette	3,098	2,912	94%	3,199	3,827	120%
42 Marshall	537	868	162%	725	1,039	143%
43 Negaunee	217	256	118%	221	317	143%
44 Newberry	192	243	127%	140	206	147%
45 Niles	1,287	1,003	78%	1,496	1,233	82%
46 Norway	300	386	128%	294	1,128	384%
47 Paw Paw	480	450	94%	458	497	109%
48 Petoskey	1,080	839	78%	1,116	688	62%
49 Portland	362	332	92%	372	366	98%
50 Sebewaing	311	1,017	327%	163	716	439%
51 South Haven	1,312	1,582	121%	1,315	1,425	108%
52 St. Louis	378	365	97%	379	241	64%
53 Stephenson	60	68	113%	51	75	147%
54 Sturgis	2,215	2,798	126%	1,557	1,911	123%
55 Traverse City	2,543	4,109	162%	2,157	2,797	130%
56 Union City	139	125	90%	164	142	87%
57 Wakefield	52	52	100%	130	61	47%
58 Wyandotte	2,495	2,500	100%	1,707	1,981	116%
59 Zeeland	2,601	1,484	57%	4,101	5,619	137%
Subtotal Municipals	62,605	68,233	109%	64,049	79,541	124%
Statewide Electric Totals	961,202	1,198,644	125%	985,439	1,301,241	132%
2012 Target does not include previous year carryover amount.						
*DPLD BK						
% of MCF Sales	0.75%			0.75%		
	2012 Target	2012 Actual	% Achieved	2013 Target	2013 Actual	% Achieved
Gas Companies						
1 Consumers Energy	1,844,899	2,378,978	129%	1,765,915	2,173,124	123%
2 DTE - Gas	894,701	1,186,000	133%	1,240,000	1,436,000	116%
3 MGU	219,898	262,259	119%	216,038	259,722	120%
4 SEMCO Energy	409,480	417,774	102%	402,944	523,683	130%
5 WPSCorp	10,946	30,877	282%	10,748	13,152	122%
6 XCEL Energy	6,500	6,986	107%	6,264	6,760	108%
Statewide Gas Totals	3,386,424	4,282,874	126%	3,641,909	4,412,441	121%

Company	2013 Energy Optimization Surcharges	
IOUs		
Alpena Power Company	Residential (\$/kwh)	\$0.00280
	General Service	\$2.83
	Standard	\$40.82
	Large Power	\$330.49
	Large Industrial below 13 kV	\$1,232.00
	Large Industrial above 13 kV	\$315.00
	Alt Energy Econ Dev	\$0.00
	Outdoor Protective Lighting 100 watt	\$0.240
	Outdoor Protective Lighting 250 watt	\$0.4100
	Street & Highway	\$0.200
	Special Contract	\$322.08
Consumers Energy Company	Residential (\$/kwh)	\$0.00258
	Secondary 0-1250 kwh	\$1.49
	Secondary 1251-5000 kwh	\$8.11
	Secondary 5001-30000 kwh	\$48.76
	Secondary 30001-50000 kwh	\$48.76
	Secondary Above 50000 kwh	\$48.76
	Primary 0-5000 kwh	\$3.99
	Primary 5001-10000 kwh	\$29.44
	Primary 10001-30000 kwh	\$73.89
	Primary 30001-50000 kwh	\$175.91
	Primary above 50000 kwh	\$802.80
DTE - Energy Electric	Residential (\$/kwh)	\$0.00271
	Secondary 0 - 850 kWh/mo	\$0.71
	Secondary 851-1650 kWh/mo	\$4.23
	Sec Above 1650 kWh/mo	\$18.10
	Primary 0 - 11500 kwh/mo	\$47.91
	Primary Above 11501 kWh/mo	\$499.89
Indiana Michigan Power Company	Residential (\$/kwh)	\$0.00085
	SGS (UNMETERED) \$/kwh	\$0.00169
	C&I SGS	\$2.68
	C&I SEC MGS TOD	\$2.68
	C&I WSS	\$5.60
	C&I LGS	\$154.21
	C&I MS	\$2.68
	C&I LP	\$154.21
Northern States Power Company-Wisconsin	Residential MR1,2 (\$/kwh)	\$0.0025
	Small Commercial Service MSC-1	\$2.95
	Small General TOD Service MST-1	\$2.95
	Commercial Industrial GS	\$29.75
	Large Industrial Service MI-1	\$160.00
	Peak TOD Service MPC-1 Secondary/Primary	\$160.00
	Peak TOD Service MPC-1 Transmission Transformed	\$1,900.00
	Peak TOD Service MPC-1 Transmission Untransformed	\$160.00
	Peak Controlled GS MPC-2	\$29.75
	Street Lighting MSL-1, MSL-2	\$0.27
	Muni Pump Service	\$2.95
Upper Peninsula Power Company	Residential A1,2,AH1 (\$/kwh)	\$0.0041
	Small Comm C1, 2, H1	\$4.44
	Medium Commercial P1,2	\$52.07
	Lg Commercial Cp-U,WP-3,CP-RR,RTMP,D	\$578.97
	Lighting SL-3,5,6,10, Z-3,4	\$0.36
	Special Contract	\$578.97
Wisconsin Public Service Corporation	Residential, Rg-1M,Rg,2M,Rg-OTOU-1M (\$/kWh)	\$0.0021
	Small Comm Cg-1M,Cg-2M,Cg-OTOU-1M	\$3.18
	Small Comm Cg-1MSeasonal,Cg-2MSeasonal,Cg-OTOU-1MSeasonal	\$6.36
	Medium Comm Cg3M, Cg4M, Mp1M	\$32.01
	Medium Comm Cg3M seasonal, Cg4M seasonal	\$64.02
	Large Cp-1M (Secondary/Primary)	\$405.09
	Cp-1M (Transmission <10MW)	\$974.42
	Cp-1M (Transmission >10MW)	\$1,677.53
	Lighting- Ms-1M,Ms-3M,Gy-1M,Gy-3M	\$0.22

Company	2013 Energy Optimization Surcharges	
IOUs		
Wisconsin Electric Power Company	Residential (\$/kwh)	\$0.00273
	Cg1	\$0.17989
	Cg2	\$0.32082
	Cg3 & Cg3C	\$5.18043
	Cg5	\$0.64283
	Cp1	\$19.02247
	Cp2, Cp3 & Cp4	\$133.25134
	Schedule A	\$980.20487
	Spec Con (CpLC)	\$2,850.2201
	TssM/U	\$0.180
	Unmetered lamps GI1	\$0.13-0.72
	Unmetered lamps Ms21	\$0.09-0.72
Unmetered lamps Ms3	\$0.09-1.80	
Co-ops		
Alger Delta Cooperative Electric Association	Farm and Home (A) (\$/kWh)	\$0.00262
	Seasonal Residential (AS)	\$0.00262
	Combined Residential	\$0.00262
	Commercial & Small Power (B)	\$2.48
	Large Power (LP)	\$48.26
Bayfield Electric Cooperative		
Cherryland Electric Cooperative	Farm & Home Service (\$/kWh)	\$0.00000
	General Service (C)	\$0.00
	Optional Irrigation TOD (OTD)	\$0.00
	Large Power (LP)	\$0.00
	Optional Large Power TOD (LPTOD)	\$0.00
	Large Commercial & Industrial (LC&I)	\$0.00
	Primary Substation (PSDS)	\$0.00
Cloverland Electric Cooperative	Farm and Home (FH) (ES) (\$/kWh)	\$0.00197
	Seasonal Residential (SR)	\$0.00197
	Combined Residential	\$0.00197
	General Service (GS)	\$3.37
	Seasonal General Service (SG)	\$3.37
	Commercial Heating and A/C (HA)	\$3.37
	Large Power (LP)	\$183.99
	Large Power Mining (LP-MO)	\$183.99
Primary Service (PSDS)	\$183.99	
Great Lakes Energy Cooperative	Residential (A) (\$/kWh)	\$0.00198
	Seasonal Residential (AS)	\$0.00198
	Combined Residential	\$0.00198
	General Service (GS)	\$4.76
	Large Power (LP)	\$4.76
	C&I APM (C-APM)	\$4.76
	C&I APM (D-APM)	\$865.59
	Primary Service (PSDS)	\$865.59
Midwest Energy Cooperative	Farm and Home Service (A) (\$/kWh)	\$0.00198
	Int Duel Heating (I-DSH)	\$0.00198
	Combined Residential	\$0.00198
	General Service (GS)	\$1.76
	Irrigation (IRR)	\$3.84
	Large Power Service (LP)	\$54.76
	Large Power >200 kW (CD-1)	\$422.17
	Large Power Primary & Contracts (LPPS)	\$2,888.19
Ontonagon Co. Rural Electrification Assoc.	Residential (A, AH) (\$/kWh)	\$0.00275
	Seasonal Residential (A-S)	\$0.00275
	Combined Residential	\$0.00275
	General Service (B)	\$1.85
	Large Power (LP)	\$19.25
	Large Power (LP-1)	\$140.03
Presque Isle Electric and Gas Co-op	Residential (A) (\$/kWh)	\$0.00229
	Seasonal Residential (AS)	\$0.00229
	Combined Residential	\$0.00229
	General Service (GS)	\$3.10
	Large General Service (LG and LPTOD)	\$74.14
	Primary Service (PSDS)	\$400.99

Company	2013 Energy Optimization Surcharges	
Co-ops		
Thumb Electric Cooperative	Farm and Home (A) (\$/kWh)	\$0.00216
	Seasonal Residential (A-S)	\$0.00216
	Combined Residential	\$0.00216
	General Service (GS)	\$3.57
	Large General Service (LGS)	\$246.53
	Large Power Dist. Substation (LPDS)	\$276.68
	General Service TOD (GS-TOD)	\$3.57
	Seasonal General Service (SGS)	\$0.52
	Tri-County Electric Cooperative	Farm and Home Service (A) (\$/kwh)
General Service		\$1.55
Irrigation TOD Service (\$/kWh)		\$0.00217
Large Power Service (CD)		\$47.14
Large Power TOD Service (CD-1)		\$29.43
Primary Service (PSDS)		\$1,186.05
Retail Rate-Regulated Natural Gas Provider		
Consumers Energy Company (joint filing)	Residential Rate A, A-1 (\$/Mcf)	\$0.30300
	Residential Rate GS-1,2 (\$/Mcf)	\$0.22190
	General Service-3 (0-100,000 Mcf)	\$0.22190
	General Service-3 (Above 100,000 Mcf)	\$0.01100
	LT and XLT (0 - 100,000 Mcf)	\$0.22190
	LT and XLT (Above 100,000 Mcf)	\$0.01100
DTE- Energy Gas	Residential A, AS (\$/Mcf)	\$0.18420
	Residential 2A,GS1 (\$/Mcf)	\$0.14260
	Large Volume <100,000 Mcf (\$/Mcf)	\$0.14260
	Large Volume >100,000 Mcf (\$/Mcf)	\$0.01020
	School (\$/Mcf)	\$0.14260
	ST, LT, XLT, XXL (\$/Mcf)	\$0.01020
Michigan Gas Utilities	Residential (\$/Mcf)	\$0.18110
	Multi-Family (\$/Mcf)	\$0.18110
	Sm General Service	\$4.17
	Lg General Service	\$215.45
	Commercial Lighting	\$10.33
	Special Contracts	\$221.26
	Transportation TR-1	\$39.27
	Transportation TR-2	\$119.34
	Transportation TR-3	\$408.71
Northern States Power Co-Wisc.(joint filing)	Residential (\$/therm)	\$0.0170
	C&I GS 302 (\$/meter)	\$5.02
	C&I GS 304 (\$/meter)	\$468.79
	C&I Interruptible Use 303 (\$/meter)	\$86.39
	C&I Transportation (\$/meter)	\$5.02
SEMCO Energy, Inc.	Residential (\$/Dth)	\$0.11100
	GS-1, GS-2, GS-3	\$5.84
	TR-1, TR-2, TR-3	\$90.79
Wisconsin Public Serv. Corp.(joint filing)	Residential (\$/therm)	\$0.0151
	C&I small	\$3.9600
	C&I small seasonal	\$3.9600
	C&I Large	\$36.0500
	Transport Large	\$14.2900
	Transport Super Large	\$246.2300

Appendix D-2 Residential Energy Optimization Surcharges and Average Monthly Totals

COMPANY	Case Number	EO Residential Surcharge \$/month	EO Residential Surcharge \$/kwh
IOUs			
Alpena Power Company	U-16669	\$1.82	\$0.00280
Consumers Energy Company	U-16736	\$1.68	\$0.00258
DTE - Energy Electric	U-16671	\$1.76	\$0.00271
Indiana Michigan Power Company	U-16739	\$0.55	\$0.00085
Northern States Power Company-Wisconsin	U-16674	\$1.63	\$0.00250
Upper Peninsula Power Company	U-16675	\$2.67	\$0.00410
Wisconsin Public Service Corporation	U-16676	\$1.37	\$0.00210
Wisconsin Electric Power Company	U-16677	\$1.77	\$0.00273
IOU Average:		\$1.66	\$0.00255
Co-ops			
Alger Delta Cooperative Electric Association	U-16678	\$1.70	\$0.00262
Bayfield Electric Cooperative	U-16679	\$0.00	\$0.00000
Cherryland Electric Cooperative	U-17369	\$0.00	\$0.00000
Cloverland Electric Cooperative	U-16681	\$1.28	\$0.00197
Great Lakes Energy Cooperative	U-16682	\$1.29	\$0.00198
Midwest Energy Cooperative	U-16683	\$1.29	\$0.00198
Ontonagon Co. Rural Electrification Assoc.	U-16684	\$1.79	\$0.00275
Presque Isle Electric and Gas Co-op	U-16685	\$1.49	\$0.00229
Thumb Electric Cooperative	U-16686	\$1.40	\$0.00216
Tri-County Electric Cooperative	U-16687	\$1.33	\$0.00204
Co-op Average:		\$1.16	\$0.00178
Municipals			
Village of Baraga	U-16688	\$0.91	\$0.00140
City of Bay City	U-17382	\$0.54	\$0.00083
City of Charlevoix	U-17383	\$1.16	\$0.00178
Chelsea Department of Electric and Water	U-17384	\$0.65	\$0.00100
Village of Clinton	U-17385	\$0.00	\$0.00000
Coldwater Board of Public Utilities	U-17386	\$1.64	\$0.00252
Croswell Municipal Light & Power Department	U-17387	\$1.10	\$0.00169
City of Crystal Falls	U-16695	\$0.95	\$0.00146
Daggett Electric Department	U-16696	\$0.10	\$0.00015
Detroit Public Lighting Department	U-16697	\$0.98	\$0.00150
City of Dowagiac	U-16698	\$0.65	\$0.00100
City of Eaton Rapids	U-17392	\$0.52	\$0.00080
City of Escanaba	U-16700	\$0.90	\$0.00138
City of Gladstone	U-16701	\$1.04	\$0.00160
Grand Haven Board of Light and Power	U-17395	\$1.17	\$0.00180
City of Harbor Springs	U-16703	\$0.81	\$0.00124
City of Hart Hydro	U-17397	\$0.85	\$0.00130
Hillsdale Board of Public Utilities	U-16705	\$1.07	\$0.00164
Holland Board of Public Works	U-17399	\$1.08	\$0.00166
Village of L'Anse	U-16707	\$1.04	\$0.00160
Lansing Board of Water & Light	U-17401	\$1.20	\$0.00185
Lowell Light and Power	U-17402	\$1.06	\$0.00163

COMPANY	Case Number	EO Residential Surcharge \$/month	EO Residential Surcharge \$/kwh
Municipals			
Marquette Board of Light and Power	U-16710	\$0.71	\$0.00109
Marshall Electric Department	U-17404	\$0.00	\$0.00000
Negaunee Department of Public Works	U-16712	\$1.07	\$0.00164
Newberry Water and Light Board	U-16713	\$0.90	\$0.00138
Niles Utility Department	U-17407	\$0.00	\$0.00000
City of Norway	U-16715	\$1.07	\$0.00164
City of Paw Paw	U-17409	\$0.78	\$0.00120
City of Petoskey	U-17410	\$1.18	\$0.00182
City of Portland	U-17411	\$0.86	\$0.00132
City of Sebawaing	U-17412	\$1.13	\$0.00174
City of South Haven	U-16720	\$0.51	\$0.00079
City of St. Louis	U-17414	\$0.74	\$0.00114
City of Stephenson	U-16722	\$0.83	\$0.00128
City of Sturgis	U-17416	\$1.24	\$0.00191
Traverse City Light & Power	U-17417	\$0.00	\$0.00000
Union City Electric Department	U-17418	\$0.59	\$0.00090
City of Wakefield	U-17419	\$1.11	\$0.00170
Wyandotte Department of Municipal Service	U-17420	\$1.28	\$0.00197
Zeeland Board of Public Works (per meter)	U-17421	\$1.00	\$0.00000
Municipal Average:		\$0.84	\$0.00125
Electric Provider Average:		\$1.22	\$0.00186
Retail Rate-Regulated Natural Gas Providers	Case No.	EO Residential Surcharge \$/month	EO Residential Surcharge \$/Mcf
Consumers Energy Company (joint filing)	U-16736	\$2.52	\$0.30300
DTE - Energy Gas	U-16730	\$1.53	\$0.18420
Michigan Gas Utilities Corporation	U-16731	\$1.51	\$0.18110
Northern States Power Co-Wisc.(joint filing)	U-16674	\$0.14	\$0.01700
SEMCO Energy, Inc.	U-16733	\$0.92	\$0.11100
Wisconsin Public Serv. Corp.(joint filing)	U-16676	\$0.13	\$0.01510
Natural Gas Provider Average:		\$1.13	\$0.13523
2013 STATE OVERALL AVERAGE:		\$1.19	\$0.03520

Actual Spending	Total Spend		Residential		Low Income		Commercial/Industrial		Administration, Evaluation, Carryover	
	2012	2013	2012	2013	2012	2013	2012	2013	2012	2013
Electric IOUs										
1 Alpena	\$510,504	\$456,435	\$130,866	\$249,840	\$19,786	\$86,724	\$147,756	\$153,450	\$231,882	\$53,144
2 Consumers	\$67,369,007	\$69,097,040	\$26,057,953	\$26,809,104	\$1,563,654	\$1,553,208	\$32,622,220	\$34,945,545	\$8,688,834	\$7,342,390
3 DTE Energy Electric	\$69,600,000	\$74,900,000	\$32,687,000	\$33,530,000	\$6,240,000	\$5,300,000	\$27,673,000	\$30,770,000	\$9,240,000	\$10,600,000
4 Indiana Michigan	\$4,420,319	\$4,517,294	\$1,650,457	\$2,065,413	\$227,813	\$724,429	\$1,656,801	\$1,979,918	\$1,113,060	\$471,964
5 UP Power	\$1,967,085	\$1,834,617	\$500,839	\$794,758	\$125,234	\$370,456	\$616,578	\$829,659	\$849,667	\$210,199
6 Wisconsin Electric	\$931,154	\$883,440	\$231,229	\$347,235	\$51,308	\$165,817	\$231,502	\$435,057	\$468,422	\$101,148
7 WPSCorp	\$381,404	\$409,687	\$82,475	\$190,822	\$16,527	\$106,407	\$162,255	\$177,102	\$136,675	\$41,763
8 Xcel Energy Electric	\$234,475	\$203,557	\$74,511	\$120,249	\$13,420	\$38,999	\$92,803	\$57,170	\$67,161	\$26,138
Subtotal Electric IOUs	\$145,413,948	\$152,302,070	\$61,415,331	\$64,107,421	\$8,257,742	\$8,346,040	\$63,202,916	\$69,347,901	\$20,795,702	\$18,846,746
Electric Coops										
9 Alger Delta	\$148,468	\$155,303	\$43,758	\$50,331	\$3,474	\$4,453	\$8,662	\$19,962	\$96,048	\$85,010
10 Bayfield	\$866	\$1,271	\$463	\$1,173	\$31	\$740	\$0	\$0	\$403	\$98
11 Cherryland	\$174,515	\$329,623	\$98,649	\$16,995	\$20,806	\$3,998	\$55,060	\$205,311	\$20,806	\$107,317
12 Cloverland/Edison Sault	\$904,920	\$1,273,334	\$274,538	\$369,181	\$28,166	\$46,461	\$440,316	\$756,527	\$190,066	\$147,626
13 Great Lakes	\$1,503,475	\$2,142,034	\$727,161	\$975,188	\$51,179	\$127,950	\$475,197	\$941,476	\$301,117	\$225,370
14 Midwest	\$841,983	\$929,834	\$347,277	\$418,687	\$23,729	\$55,728	\$241,887	\$295,796	\$252,819	\$215,351
15 Ontonagon	\$45,447	\$52,279	\$16,538	\$31,363	\$1,984	\$1,922	\$6,337	\$7,721	\$22,572	\$13,195
16 Presque Isle	\$313,565	\$425,955	\$136,626	\$224,476	\$9,887	\$48,576	\$50,483	\$111,912	\$126,456	\$89,567
17 Thumb	\$227,833	\$254,229	\$132,350	\$161,765	\$13,634	\$21,177	\$31,094	\$32,749	\$64,389	\$59,715
18 Tri-County	\$378,650	\$443,333	\$186,307	\$273,354	\$14,655	\$46,487	\$82,317	\$92,512	\$110,026	\$77,467
Subtotal Electric Coops	\$4,539,722	\$6,007,195	\$1,963,667	\$2,522,513	\$167,545	\$357,492	\$1,391,353	\$2,463,966	\$1,184,702	\$1,020,716
Municipals										
19 Baraga	\$48,700	\$42,490	\$6,643	\$20,629	\$3,636	\$5,704	\$19,948	\$16,917	\$22,109	\$4,944
20 Bay City	\$469,307	\$479,666	\$239,588	\$228,838	\$60,017	\$96,803	\$198,694	\$230,731	\$31,025	\$20,097
21 Charlevoix	\$68,757	\$78,900	\$14,127	\$39,963	\$2,002	\$5,640	\$49,970	\$37,844	\$4,660	\$1,093
22 Chelsea	\$72,410	\$36,909	\$20,313	\$1,899	\$0	\$300	\$44,951	\$30,010	\$7,146	\$5,000
23 Clinton	\$9,465	\$11,949	\$5,992	\$5,339	\$127	\$149	\$1,823	\$4,310	\$1,650	\$2,300
24 Coldwater	\$536,800	\$536,000	\$191,000	\$190,200	\$78,400	\$78,400	\$244,200	\$244,200	\$101,600	\$101,600
25 Crosswell	\$43,500	\$57,029	\$5,507	\$12,052	\$2,555	\$5,515	\$31,946	\$40,415	\$6,047	\$4,562
26 Crystal Falls	\$43,440	\$43,059	\$12,643	\$23,222	\$2,391	\$8,915	\$11,680	\$15,173	\$19,117	\$4,665
27 Daggett	\$2,469	\$1,993	\$1,118	\$1,526	\$172	\$601	\$301	\$195	\$1,049	\$272
28 Detroit PLD	\$141,860	\$0	\$600	\$0	\$550	\$0	\$72,180	\$0	\$69,080	\$0
29 Dowagiac	\$66,347	\$113,166	\$10,122	\$33,994	\$407	\$12,962	\$48,546	\$65,160	\$7,679	\$14,012
30 Eaton Rapids	\$67,040	\$86,412	\$13,839	\$29,084	\$352	\$6,875	\$47,397	\$50,415	\$5,804	\$6,913
31 Escanaba	\$191,237	\$211,714	\$32,571	\$38,744	\$2,546	\$4,505	\$94,476	\$159,002	\$64,190	\$13,968
32 Gladstone	\$79,460	\$61,598	\$21,287	\$30,398	\$6,127	\$12,503	\$22,791	\$22,348	\$35,382	\$8,852
33 Grand Haven	\$228,811	\$173,729	\$34,626	\$22,644	\$638	\$455	\$181,452	\$141,874	\$12,733	\$9,211
34 Harbor Springs	\$43,205	\$64,774	\$9,284	\$21,134	\$176	\$6,862	\$30,195	\$36,121	\$3,726	\$7,519
35 Hart Hydro	\$38,926	\$68,214	\$4,177	\$11,926	\$0	\$4,195	\$31,040	\$50,831	\$3,709	\$5,457
36 Hillsdale	\$214,108	\$196,493	\$54,805	\$64,412	\$9,980	\$31,308	\$97,056	\$110,281	\$62,247	\$21,800
37 Holland	\$1,066,505	\$1,265,403	\$236,736	\$258,726	\$50,293	\$28,745	\$743,040	\$914,976	\$86,729	\$91,701
38 L'Anse	\$31,114	\$22,350	\$8,949	\$11,974	\$2,218	\$3,825	\$10,788	\$7,377	\$11,378	\$2,999
39 LBWL	\$3,260,845	\$3,612,207	\$1,129,792	\$1,141,347	\$200,559	\$238,691	\$1,817,240	\$2,090,263	\$313,813	\$380,597
40 Lowell	\$63,247	\$92,874	\$12,499	\$23,641	\$1,425	\$1,200	\$39,416	\$56,304	\$11,332	\$12,929
41 Marquette	\$488,019	\$468,288	\$104,486	\$152,588	\$9,383	\$26,965	\$236,045	\$282,341	\$147,488	\$33,359
42 Marshall	\$55,902	\$74,234	\$9,320	\$18,056	\$0	\$709	\$32,477	\$41,790	\$14,105	\$14,388
43 Negaunee	\$65,940	\$54,094	\$23,690	\$30,895	\$3,127	\$11,585	\$12,584	\$16,316	\$29,666	\$6,883
44 Newberry	\$31,159	\$34,013	\$19,808	\$9,635	\$3,467	\$1,023	\$7,918	\$21,921	\$3,433	\$2,457
45 Niles	\$129,103	\$120,312	\$29,346	\$22,869	\$1,637	\$21,924	\$90,086	\$88,471	\$9,671	\$8,972
46 Norway	\$72,560	\$81,451	\$25,782	\$34,318	\$4,041	\$10,727	\$39,819	\$27,608	\$7,314	\$7,314
47 Paw Paw	\$55,998	\$24,638	\$9,285	\$8,728	\$0	\$1,530	\$42,895	\$15,339	\$3,818	\$570
48 Petoskey	\$96,140	\$24,929	\$13,599	\$3,737	\$0	\$0	\$76,149	\$16,324	\$6,392	\$4,868
49 Portland	\$41,497	\$60,388	\$16,071	\$27,373	\$407	\$3,173	\$21,430	\$28,184	\$3,996	\$4,831
50 Sebawaing	\$43,577	\$79,772	\$12,687	\$13,145	\$3,482	\$3,706	\$26,211	\$61,361	\$4,679	\$5,266
51 South Haven	\$260,203	\$224,941	\$54,283	\$89,390	\$10,486	\$41,720	\$94,290	\$108,631	\$111,629	\$26,920
52 St. Louis	\$53,446	\$66,106	\$8,332	\$19,195	\$424	\$57	\$39,990	\$40,961	\$5,124	\$5,950
53 Stephenson	\$7,799	\$8,055	\$2,593	\$4,490	\$215	\$1,660	\$2,656	\$2,732	\$2,550	\$833
54 Sturgis	\$242,340	\$230,663	\$33,340	\$16,358	\$1,344	\$13,553	\$198,609	\$206,252	\$10,391	\$8,053
55 Traverse City	\$612,250	\$394,329	\$100,341	\$75,036	\$6,236	\$12,373	\$386,186	\$274,762	\$125,723	\$44,531
56 Union City	\$11,577	\$12,738	\$7,635	\$7,362	\$201	\$146	\$3,092	\$4,530	\$850	\$850
57 Wakefield	\$6,186	\$10,525	\$2,766	\$6,497	\$442	\$1,114	\$3,214	\$2,996	\$206	\$1,032
58 Wyandotte	\$238,925	\$205,254	\$77,888	\$53,272	\$23,366	\$11,875	\$134,100	\$73,678	\$26,937	\$78,304
59 Zeeland	\$285,371	\$420,021	\$67,538	\$45,039	\$260	\$66	\$204,925	\$372,915	\$12,908	\$2,067
Subtotal Municipals	\$9,585,545	\$9,851,680	\$2,678,366	\$2,849,675	\$489,452	\$718,059	\$5,451,209	\$6,024,070	\$1,407,271	\$977,939
Subtotal Statewide Electric	\$159,539,215	\$168,160,945	\$66,057,364	\$69,479,609	\$8,914,739	\$9,421,591	\$70,045,477	\$77,835,937	\$23,387,674	\$20,845,401
Gas Companies										
60 Consumers	\$48,148,786	\$47,776,959	\$32,165,503	\$31,783,158	\$10,463,836	\$9,892,713	\$10,009,069	\$10,891,462	\$5,973,888	\$5,102,338
61 DTE Energy Gas	\$28,600,000	\$25,600,000	\$19,374,000	\$16,665,000	\$5,993,000	\$6,500,000	\$5,773,000	\$5,535,000	\$3,453,000	\$3,400,000
62 MGU	\$3,671,084	\$3,471,355	\$1,943,767	\$2,279,820	\$416,556	\$644,921	\$884,387	\$829,326	\$842,930	\$362,209
63 SEMCO Energy	\$6,242,032	\$7,363,011	\$2,628,947	\$4,486,563	\$611,891	\$1,243,067	\$1,733,469	\$2,232,115	\$1,879,616	\$644,333
64 WPSCorp	\$91,685	\$98,743	\$57,564	\$61,707	\$16,886	\$17,416	\$63,143	\$27,108	\$29,023	\$9,929
65 Xcel Energy Electric	\$109,531	\$112,867	\$44,701	\$59,581	\$15,870	\$21,069	\$29,649	\$42,069	\$35,181	\$11,217
Subtotal Statewide Gas	\$86,863,118	\$84,422,935	\$56,214,482	\$55,335,829	\$17,518,040	\$18,319,186	\$18,492,717	\$19,557,080	\$12,213,638	\$9,530,026
Total Gas and Electric	\$246,402,333	\$252,583,880	\$122,271,846	\$124,815,438	\$26,432,779	\$27,740,777	\$88,538,195	\$97,393,017	\$35,601,313	\$30,375,427

	Actual Spending	Total Spend	Residential	Low Income	C&I	Administration, Evaluation, Carryover
	2009-2011	2009-2011	2009-2011	2009-2011	2009-2011	2009-2011
Electric IOUs						
1 Alpena	\$711,512	\$174,659	\$58,763	\$338,568	\$198,285	
2 Consumers	\$104,546,754	\$28,788,757	\$5,968,167	\$52,743,204	\$23,014,793	
3 DTE Energy Electric	\$117,539,193	\$49,522,449	\$9,435,000	\$52,679,412	\$15,337,332	
4 Indiana Michigan	\$5,432,573	\$1,618,532	\$369,293	\$2,566,635	\$1,247,406	
5 UP Power	\$2,555,556	\$591,824	\$250,427	\$1,058,627	\$905,105	
6 Wisconsin Electric	\$983,889	\$218,785	\$86,231	\$394,928	\$370,176	
7 WPSCorp	\$553,620	\$126,592	\$38,909	\$230,261	\$196,767	
8 Xcel Energy Electric	\$299,179	\$74,242	\$38,319	\$124,042	\$100,895	
Subtotal Electric IOUs	\$232,622,276	\$81,115,840	\$16,245,109	\$110,135,677	\$41,370,759	
Electric Coops						
9 Alger Delta	\$201,039	\$153,474	\$23,582	\$43,147	\$4,418	
10 Bayfield	\$1,043	\$700	\$39	\$0	\$343	
11 Cherryland	\$439,729	\$117,837	\$86,858	\$137,375	\$184,517	
12 Cloverland/Edison Sault	\$1,327,578	\$460,618	\$87,421	\$529,348	\$337,612	
13 Great Lakes	\$2,656,920	\$1,094,762	\$208,197	\$531,504	\$1,030,654	
14 Midwest	\$1,327,889	\$608,473	\$105,548	\$427,840	\$291,576	
15 Ontonagon	\$122,508	\$59,341	\$12,336	\$7,181	\$55,986	
16 Presque Isle	\$707,182	\$358,203	\$89,820	\$100,390	\$248,589	
17 Thumb	\$375,517	\$213,832	\$49,086	\$59,599	\$102,086	
18 Tri-County	\$814,853	\$379,222	\$98,371	\$213,850	\$221,781	
Subtotal Electric Coops	\$7,974,258	\$3,446,462	\$761,258	\$2,050,234	\$2,477,562	
Municipals						
19 Baraga	\$42,794	\$2,981	\$6,507	\$16,623	\$23,190	
20 Bay City	\$779,774	\$296,398	\$147,344	\$278,440	\$204,936	
21 Charlevoix	\$124,543	\$40,956	\$4,771	\$67,663	\$15,924	
22 Chelsea	\$174,424	\$38,292	\$0	\$124,106	\$12,026	
23 Clinton	\$15,365	\$8,954	\$417	\$2,414	\$3,997	
24 Coldwater	\$329,201	\$46,003	\$27,372	\$207,386	\$75,812	
25 Croswell	\$74,315	\$16,752	\$5,838	\$38,175	\$19,388	
26 Crystal Falls	\$82,466	\$13,354	\$13,466	\$41,827	\$27,285	
27 Daggett	\$3,199	\$1,222	\$91	\$1,501	\$476	
28 Detroit PLD	\$527,650	\$6,230	\$296	\$217,071	\$304,349	
29 Dowagiac	\$179,237	\$33,814	\$15,431	\$117,683	\$27,740	
30 Eaton Rapids	\$99,978	\$34,236	\$3,677	\$53,631	\$12,111	
31 Escanaba	\$271,926	\$75,310	\$16,727	\$196,616	\$0	
32 Gladstone	\$106,122	\$19,920	\$145	\$28,620	\$57,582	
33 Grand Haven	\$601,512	\$200,808	\$4,971	\$363,505	\$37,199	
34 Harbor Springs	\$80,329	\$37,400	\$1,314	\$34,686	\$8,243	
35 Hart Hydro	\$65,815	\$15,139	\$824	\$43,705	\$6,971	
36 Hillsdale	\$218,169	\$46,296	\$21,250	\$127,118	\$44,755	
37 Holland	\$2,056,460	\$528,727	\$64,521	\$1,261,281	\$266,452	
38 L'Anse	\$37,661	\$5,927	\$1,065	\$31,399	\$335	
39 LBWL	\$5,457,314	\$1,665,523	\$301,950	\$3,038,274	\$753,517	
40 Lowell	\$147,825	\$46,048	\$3,010	\$72,579	\$29,198	
41 Marquette	\$701,097	\$197,065	\$37,281	\$326,399	\$177,633	
42 Marshall	\$137,457	\$30,044	\$936	\$90,187	\$17,226	
43 Negaunee	\$93,777	\$21,282	\$6,936	\$13,986	\$58,509	
44 Newberry	\$43,332	\$13,527	\$2,166	\$17,722	\$12,083	
45 Niles	\$300,065	\$118,485	\$4,543	\$154,070	\$27,510	
46 Norway	\$98,179	\$25,360	\$7,406	\$39,746	\$33,073	
47 Paw Paw	\$64,413	\$20,863	\$2,722	\$33,798	\$9,752	
48 Petoskey	\$170,584	\$47,863	\$1,955	\$108,032	\$14,689	
49 Portland	\$80,819	\$37,339	\$754	\$30,430	\$13,050	
50 Sebewaing	\$119,312	\$14,141	\$14,062	\$76,212	\$28,959	
51 South Haven	\$281,730	\$81,448	\$5,694	\$166,626	\$33,656	
52 St. Louis	\$86,583	\$25,123	\$8,757	\$45,059	\$16,401	
53 Stephenson	\$16,467	\$6,089	\$1,037	\$6,167	\$4,211	
54 Sturgis	\$462,458	\$103,305	\$4,706	\$326,932	\$32,221	
55 Traverse City	\$865,596	\$189,610	\$8,889	\$561,296	\$114,690	
56 Union City	\$18,295	\$4,155	\$758	\$11,268	\$2,872	
57 Wakefield	\$18,908	\$8,481	\$3,478	\$5,410	\$5,017	
58 Wyandotte	\$714,828	\$289,522	\$18,985	\$365,224	\$60,082	
59 Zeeland	\$618,228	\$129,192	\$8,012	\$437,109	\$51,927	
Subtotal Municipals	\$16,368,207	\$4,540,203	\$773,557	\$9,163,353	\$2,621,857	
Subtotal Statewide Electric	\$256,964,741	\$89,102,505	\$17,779,924	\$121,349,264	\$46,470,178	
Gas Companies						
60 Consumers	\$87,207,089	\$38,864,179	\$24,365,558	\$12,462,747	\$35,880,163	
61 DTE Energy Gas	\$48,112,540	\$24,356,516	\$10,892,000	\$6,921,644	\$16,834,380	
62 MGU	\$5,308,430	\$1,960,017	\$764,999	\$1,245,562	\$2,102,851	
63 SEMCO Energy	\$10,285,456	\$3,989,488	\$1,403,470	\$2,554,121	\$3,741,847	
64 WPSCorp	\$169,938	\$68,671	\$19,956	\$52,118	\$49,149	
65 Xcel Energy Electric	\$218,623	\$58,975	\$40,426	\$60,776	\$98,872	
Subtotal Statewide Gas	\$151,302,076	\$69,297,846	\$37,486,409	\$23,296,968	\$58,707,262	
Total Gas and Electric	\$408,266,817	\$158,400,351	\$55,266,333	\$144,646,232	\$105,177,440	

Minimum Payments to Efficiency United							
% of Revenue Year	0.75% 2009	1% 2010	1.5% 2011	2% 2012	2% 2013	2% 2014	2% 2015
Alpena*	\$200,594	\$228,990	\$354,942	\$510,504	\$466,063	\$503,660	\$517,181
Baraga	-	-	-	\$48,700	\$43,356	\$48,860	\$48,860
Bayfield	\$240	\$336	\$668	\$866	\$863	\$972	\$972
Crystal Falls	-	-	-	\$43,440	\$40,915	\$45,400	\$45,400
Daggett	\$870	\$1,160	\$1,764	\$2,469	\$2,384	\$2,384	\$2,384
Dowagiac	-	-	-	-	\$122,888	\$136,901	\$136,901
Edison Sault*	\$279,998	\$378,335	\$605,075	-	-	-	-
Gladstone	-	-	-	\$79,460	\$77,628	\$83,600	\$83,600
Harbor Springs	-	-	-	-	\$65,941	\$70,153	\$70,153
Hillsdale	-	-	-	\$214,108	\$191,178	\$240,359	\$240,359
Indiana Michigan	\$1,442,706	\$1,859,141	\$2,706,738	\$4,420,319	\$4,139,038	-	-
L'Anse	-	-	-	\$31,114	\$26,301	\$30,560	\$30,560
Negaunee	-	-	-	\$65,940	\$60,358	\$61,360	\$61,360
Northern States Xcel	\$89,002	\$115,837	\$177,509	\$234,474	\$229,224	\$264,730	\$267,057
Norway	-	-	-	\$72,560	\$64,146	\$75,800	\$75,800
South Haven	-	-	-	\$260,203	\$236,081	\$276,317	\$279,771
UP Power	\$719,362	\$971,884	\$1,433,567	\$1,967,085	\$1,843,407	\$2,100,133	\$2,192,220
Wisconsin Electric*	\$264,328	\$321,835	\$562,277	\$931,154	\$887,049	\$1,020,208	\$1,020,208
WPSCorp	\$139,495	\$215,224	\$289,914	\$381,401	\$366,253	\$416,618	\$410,199
MGU (Gas)	\$1,532,721	\$2,427,332	\$2,983,018	\$3,671,084	\$3,176,509	\$2,491,145	\$2,571,150
SEMCO Energy (Gas)	\$3,218,624	\$4,798,745	\$5,842,220	\$6,242,032	\$5,650,684	-	-
WPSCorp (Gas)	\$49,087	\$72,674	\$93,687	\$91,685	\$87,072	\$77,881	\$87,500
Northern States Xcel (Gas)	\$60,440	\$100,711	\$128,215	\$109,531	\$93,388	\$90,940	\$90,940
Total	\$7,997,466	\$11,492,203	\$15,179,594	\$19,378,129	\$17,870,726	\$8,037,982	\$8,232,575

*Self-direct deducted in appropriate years

2014 and 2015 payments are estimates

Electric Utilities Incremental Energy Savings Targets (MWh)							
% of Sales Year	0.30% 2008-2009	0.50% 2010	0.75% 2011	1% 2012	1% 2013	1% 2014	1% 2015
Alpena°	973	1,613	2,419	3,244	3,219	3,297	3,373
Baraga	-	-	-	188	184	187	188
Bayfield	0.5	1.0	1.4	1.9	2	2	2
Crystal Falls	-	-	-	164	162	162	162
Daggett	4.6	7.5	11.2	15	14	12	12
Dowagiac	-	-	-	-	634	660	652
Edison Sault°	2,014	3,350	5,026	-	-	-	-
Gladstone	-	-	-	328	321	325	327
Harbor Springs	-	-	-	-	275	375	376
Hillsdale	-	-	-	1,275	1,212	1,205	1,196
Indiana Michigan	9,159	14,952	22,427	29,403	28,743	-	-
L'Anse	-	-	-	137	132	127	123
Negaunee	-	-	-	217	221	222	223
Northern States Xcel	413	687	1,031	1,377	1,385	1,409	1,412
Norway	-	-	-	300	294	293	293
South Haven	-	-	-	1,312	1,315	1,347	1,368
UP Power	2,509	4,242	6,363	8,272	8,137	8,141	8,142
Wisconsin Electric°	8,414	13,200	19,800	26,358	26,709	27,728	26,782
WPSCorp	876	1,395	2,093	2,739	2,734	2,833	2,862
Total	24,362	39,448	59,171	75,334	75,693	48,325	47,493

°Includes self-direct goal in appropriate years

Gas Utilities Incremental Energy Savings Targets (Mcf)							
% of Sales Year	0.10% 2008-2009	0.25% 2010	0.50% 2011	0.75% 2012	0.75% 2013	0.75% 2014	0.75% 2015
MGU	30,172	75,150	150,300	219,898	216,038	210,757	214,838
SEMCO Energy	55,781	140,079	280,158	409,480	402,955	-	-
WPSCorp **	1,544	3,758	7,515	10,946	10,748	11,366	11,652
Northern States Xcel **	885	2,241	4,481	6,499	6,265	6,018	6,032
Total	88,382	221,227	442,454	646,823	636,006	228,141	232,522

** Converted from therms assuming 10 Th = 1 Mcf

2014 and 2015 targets are estimates

Appendix F – Process for Updating the Michigan Energy Measures Database (MEMD)

