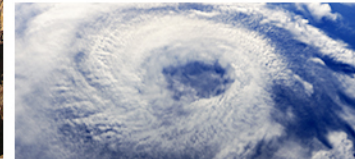




CADMUS



MEMD Calibration Research: Housing Baseline Study

Presented to EWR Collaborative

March 20, 2018



Status



- CE and DTE Residential Account meta-data received; updated data on the way
- Preliminary sample (from original data) of 600 homes drawn for exploration
 - Mapped to median household income data from Census block group
 - Plotted to understand geographic distribution
- Draft sample plan being developed in advance of final scope of work approval
 - Adjusted to stratify for importance of multifamily dwellings
- Contract instrument with DTE to be developed



Sample Plan

- Stratification
 - Likely to stratify by ‘building type’ & ‘climate zone’
 - Ongoing discussion regarding quotas for additional parameters
- Optional Upper Peninsula scope in development which can be added without affecting base scope

Proposed Next Steps

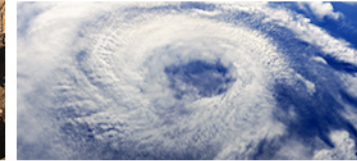


- Approve sample design priorities – target COB Thursday 3/22 for any final feedback
- Cadmus to provide to CE/DTE amended scope of work with updated sample design, budget, timeline
- Cadmus to present amended scope to EWR Collaborative in April





CADMUS



Andrew T. Machado, PE, CEM

Senior Associate

Office (617) 673-7110

Andrew.Machado@cadmusgroup.com



[Facebook.com/CadmusGroup](https://www.facebook.com/CadmusGroup)



[@CadmusGroup](https://twitter.com/CadmusGroup)



[Linkedin.com/company/the-cadmus-group](https://www.linkedin.com/company/the-cadmus-group)