

# Consumers Energy Queueing

Theresa Martinez, Director, Distribution Agreements & Attachments

May 30, 2019

**Consumers Energy**

*Count on Us<sup>®</sup>*

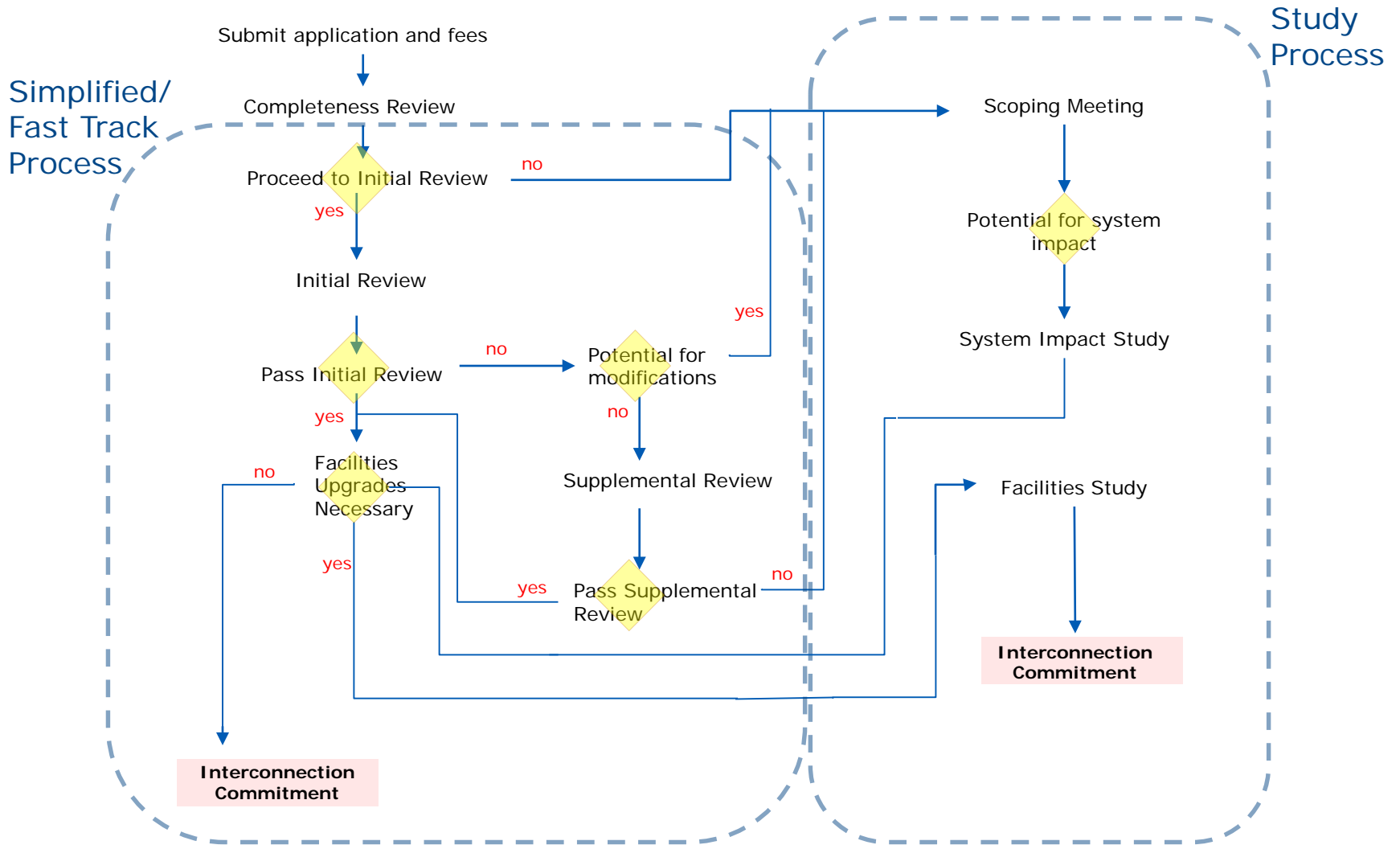
- MN DIP and Batch Study/Queue
  - Study Process – Batch Study/Queue
    - Queue Entry
    - Queue Number
    - Queue Extension and Withdraw
    - Queue Status
    - Customer Intent
    - Multiple Queue Timing
    - GIOA

# Disclaimer

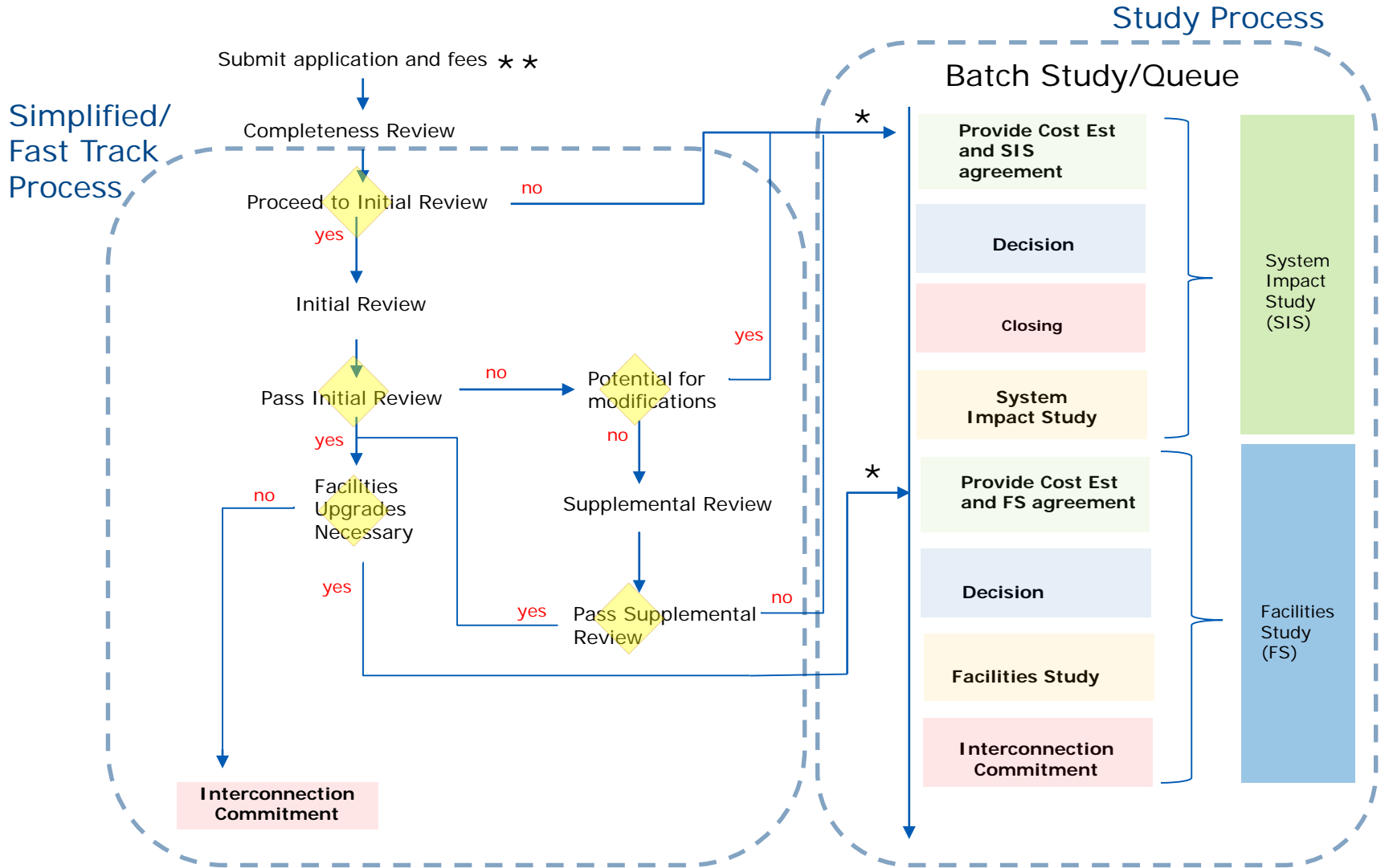
---

- Consumers Energy's review of the MN DIP does not mean:
  - We have necessarily reviewed other referenced documents, or that we do or do not agree with those referenced documents.
  - Our comments on the assigned sections do not necessarily address those cross-references, which we will address at a later time.
- The fact that we comment or do not comment on particular provisions does not mean we will not have further input on those sections at a later time. We have used best efforts to incorporate as much feedback as possible, but it is difficult to do as only partial/ individual sections of the MN DIP are reviewed.

# Process – MN DIP



# Study Process Batch Study

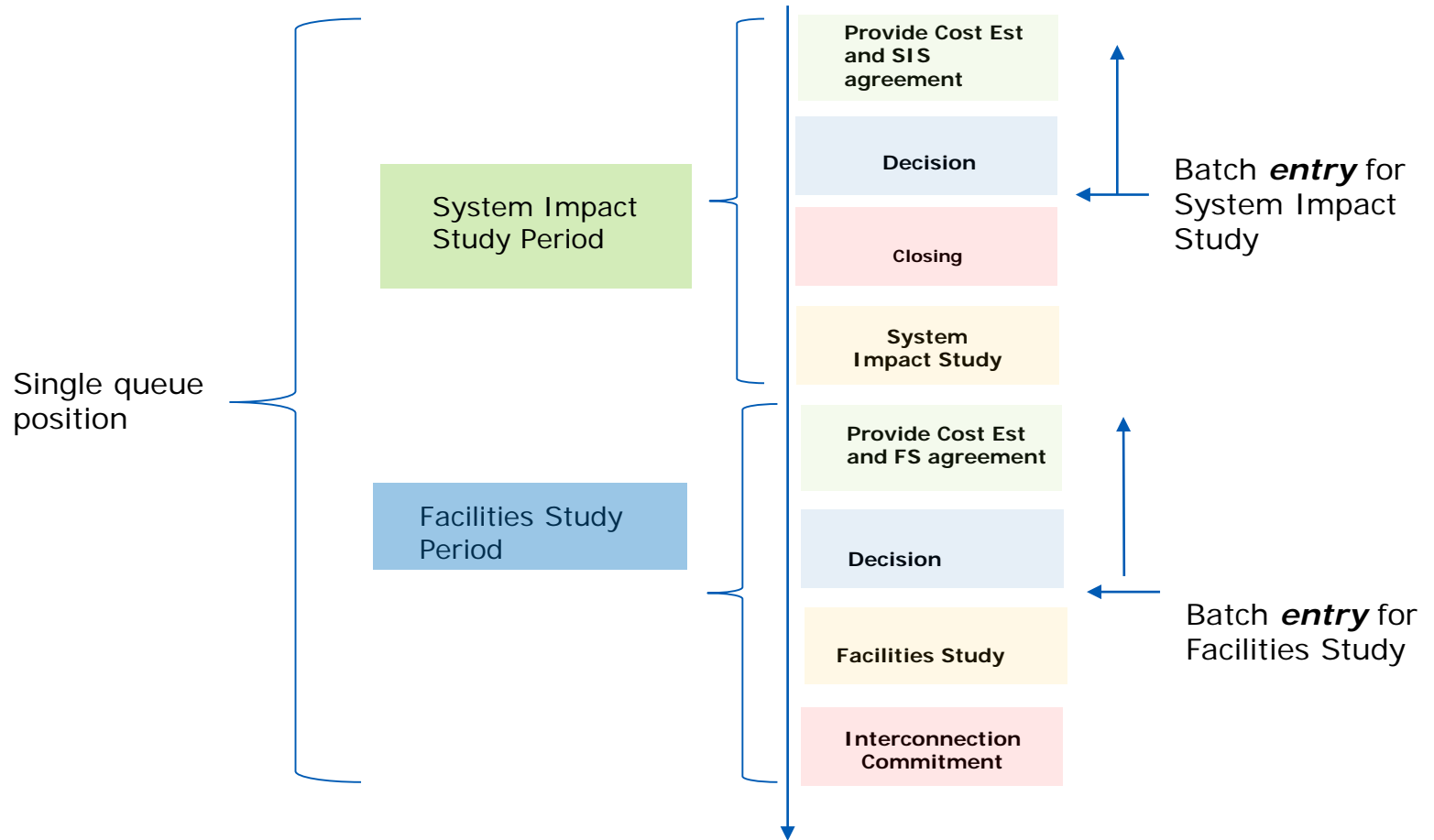


\*\* Application Number provided upon entry into process

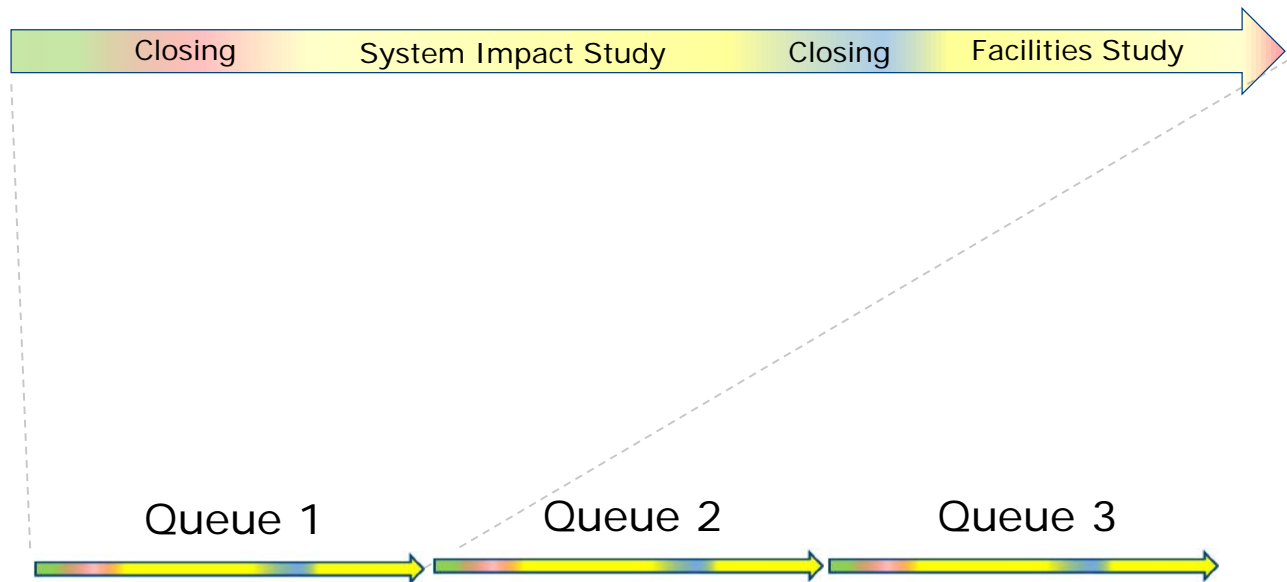
\* Queue number provided upon entry into queue

# Study Process – Batch Study/Queue

Applications can enter into the Study Process before a prescribed time when the batch becomes closed and no further applications can enter that batch. The applications that entered the batch will be studied together. Each batch holds a single queue position.



## Queue/Batch Study

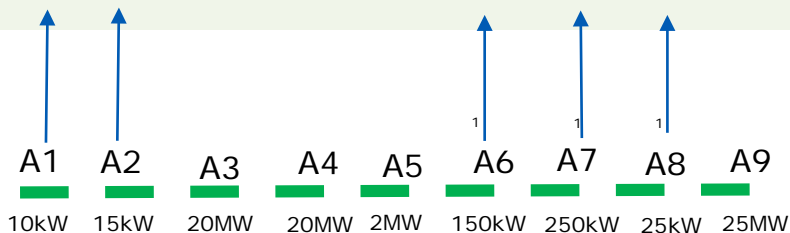


# Queue Entry

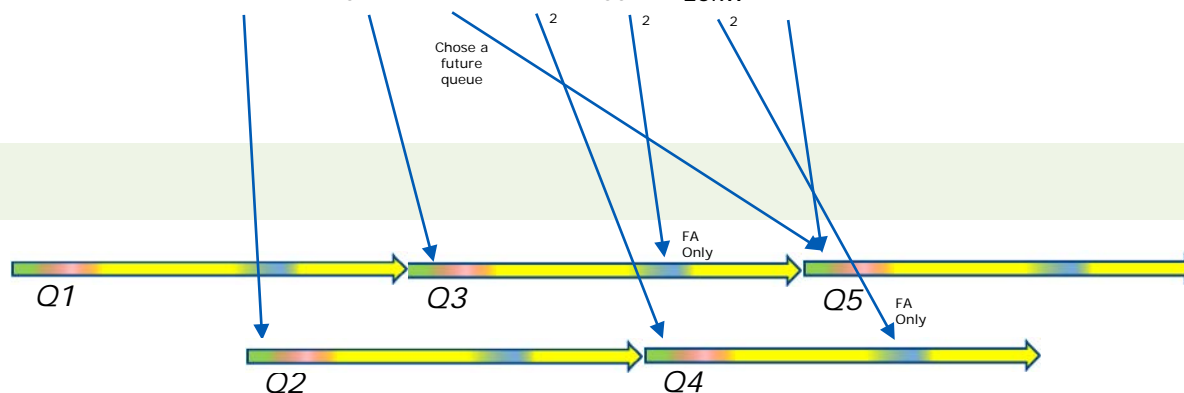
## Serial Processing

Applications submitted:

Time: →



## Queue



**Applications will either be processed serially (Simplified/Fast Track) or will enter the eligible open queue. Those initially processed serially that fail screens will enter queueing where appropriate.**

Applicatin Number	Queue Number	Type	MVA
A1	N/A	Solar	0.0100
A2	N/A	Solar	0.0150
A3	Q2	Solar	20.0000
A4	Q3	Solar	20.0000
A5	Q5	Solar	2.0000
A6	Q4	Solar	0.1500
A7	Q3FS	Solar	0.2500
A8	Q4FS	Solar	0.0250
A9	Q5	Solar	25.0000



# Queue Number

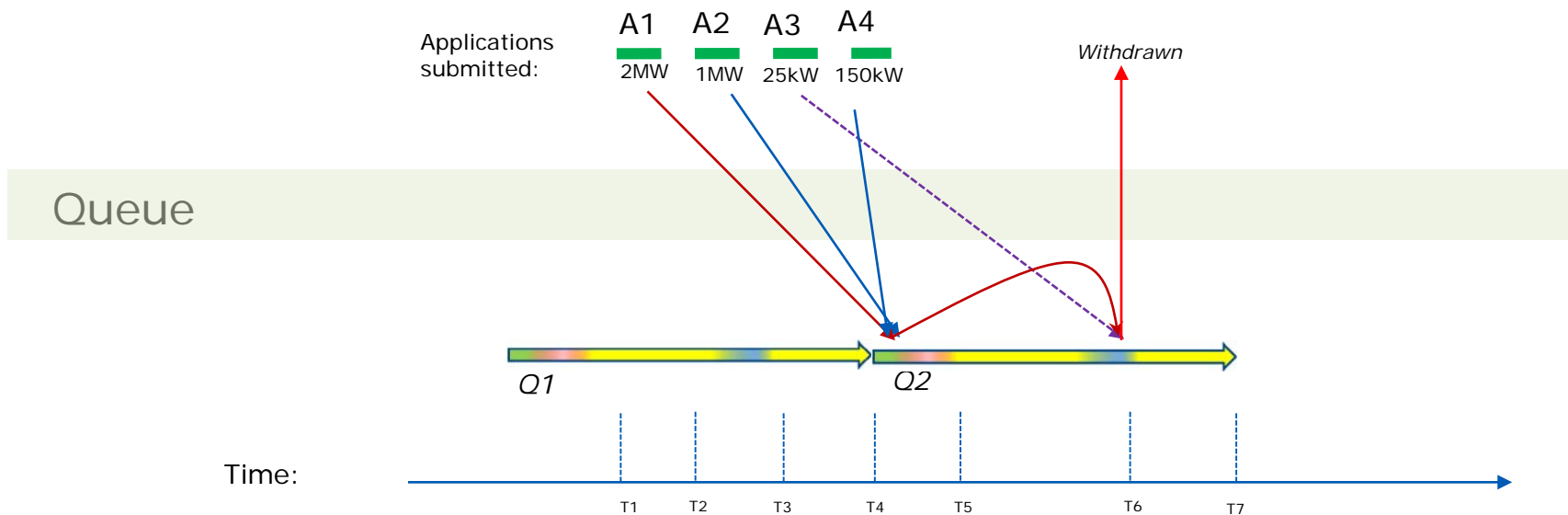
---

- Completeness review is not part of the queueing process. They are performed serially for all applications based on Application Number which is assigned when an application and fee are received by the Utility.
- An application that needs to move through the Study Process will be considered in a batch and “in the queue” and will be provided a Queue Number when the applicant has signed and paid for a Study Agreement for an open batch.
- No closed batch can be entered after closing.
- A future batch can be chosen by an applicant, but once in a batch, the application is not eligible for moving to another batch.
- All applications entering the same batch will receive the same Queue Number and will be studied in a single batch. An application that is having a System Impact Study or a Facilities Study, but not both, will receive the same Queue Number as the other applicants in that batch, but will only be batch studied for the specific study.

# Queue Extensions and Withdraws

---

- An application will be determined withdrawn if study agreements are not signed and costs are not paid within the provided time.
- No extensions will be permitted once the application is in a batch.
- There should be conditions in place that prohibit applicants from withdrawing and moving from batch to batch with the intent of benefitting from an earlier applicant's investment into system capacity upgrades.



Status at time T7 (all days are business days):

Applicatin Number	Queue Number	Type	MVA	Application Status	County	Application Received	Application Completeness Status	Application Completeness Date (Days)	Initial Review Status	Initial Review Completion Date	Supplemental Review Status	Supplemental Review Completion Date	System Impact Study Status	System Impact Study Completion Date	Facilities Study Status	Facilities Study Completion Date	Commitment Status
A1	Q2	Solar	2.0000	Withdrawn	A	T1	Complete	T1+10	N/A	N/A	N/A	N/A	Complete	T5+30	Withdrawn	N/A	N/A
A2	Q2	Solar	1.0000	Complete	A	T2	Complete	T2+10	N/A	N/A	N/A	N/A	Complete	T5+30	Complete	T6+45	Complete
A3	Q2FS	Solar	0.0250	Complete	B	T3	Complete	T3+10	Complete	T3+20	N/A	N/A	N/A	N/A	Complete	T6+45	Complete
A4	Q2	Solar	0.1500	Complete	C	T4	Complete	T4+10	Complete	T4+20	N/A	N/A	Complete	T5+30	Complete	T6+45	Complete

# System Upgrade Cost Sharing

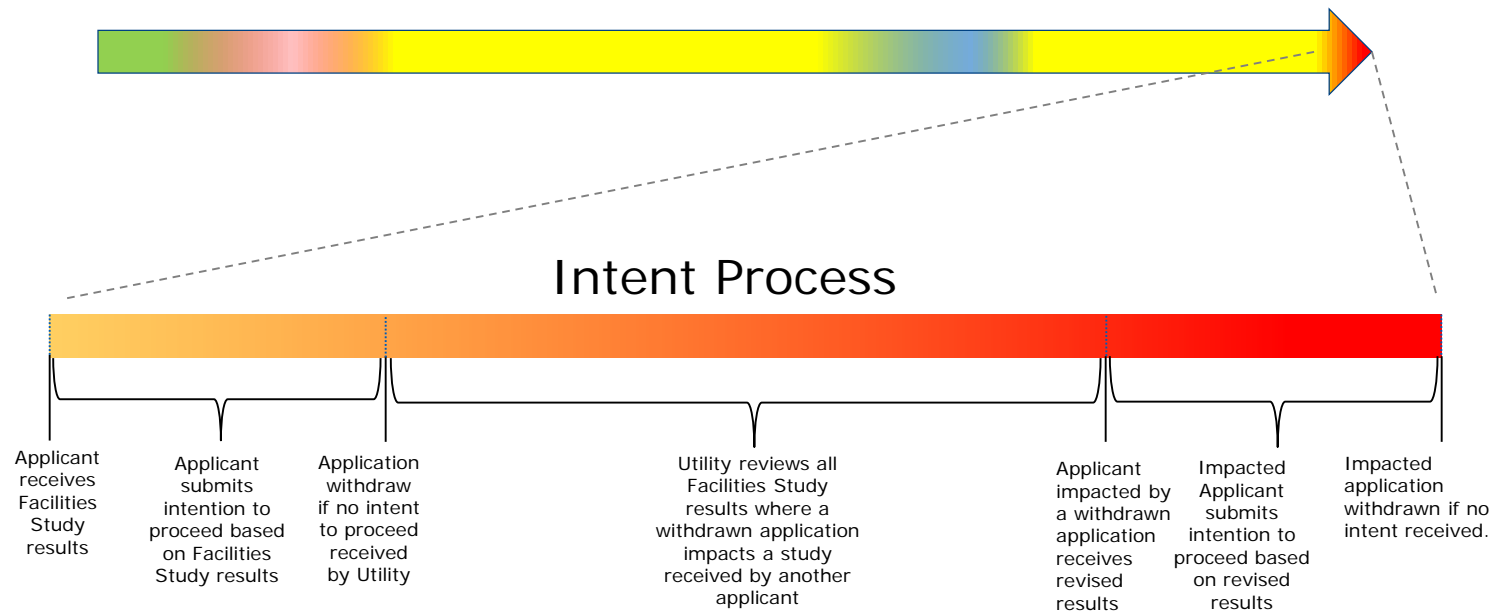
---

- Each project pays for the system upgrades resulting from their project's impact on the distribution system.
- Only if two or more projects in a batch impact the same part of the system and cause the need for system upgrades will there be cost sharing.
  - If an applicant decides not to proceed with their project after receiving study results, then the cost allocation will be reviewed at the end of that queue during the Intent Process and the impacted applicants will receive an update.

# Customer Intent

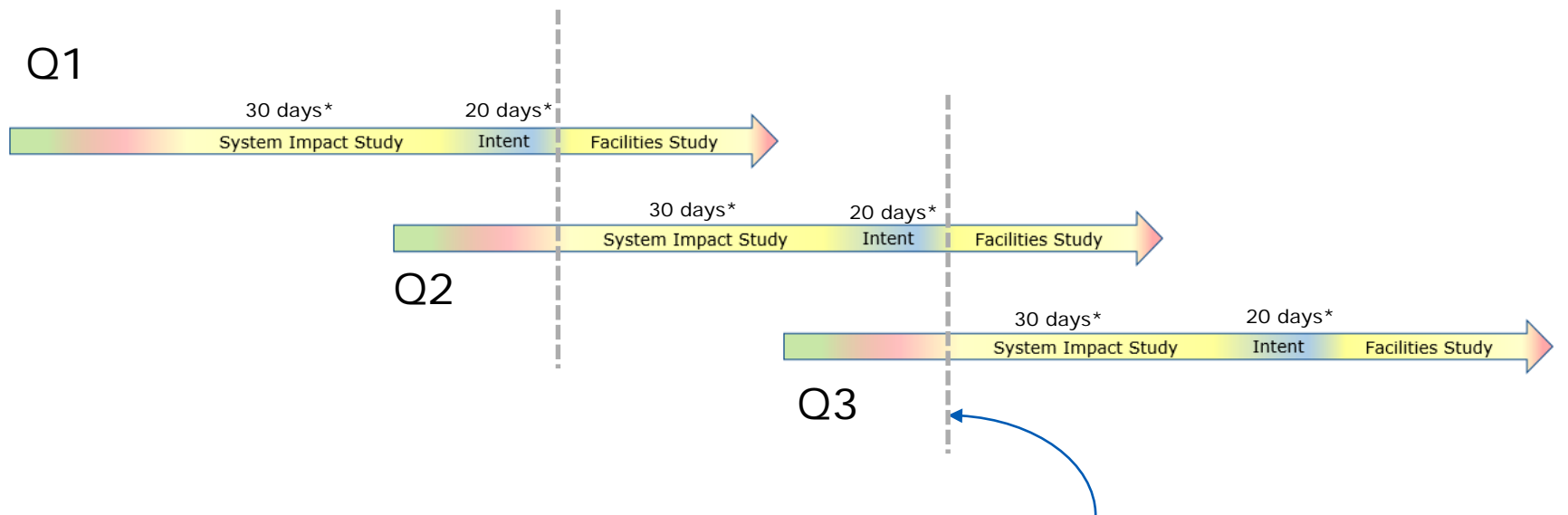
The “intent” process at the end of each batch:

- A “revisit” of study results impacted by the withdraw of another project in that queue



# Multiple Queues

- Queue schedules should not overlap such that the following queue begins their system impact study before the prior queue's facilities study phase has begun
  - It will be assumed that the applicants of the earlier queue will be modeled in the later study based on their likelihood to proceed



Q1 projects can be modeled in Q2 with a greater likelihood of viability after Q1 applicants show their intent to move forward

# GIOA

---

- Cap the in-service date in the GIOA to remove overly speculative modeled generation.
- GIOA withdraw terms – Only eligible for any refund to the extent no other developer was counting on the system upgrades within the GIOA.

---

Thank you