

# Cobalt Magnet 2025 Monroe County Interoperability

2024 Statewide Interoperability Conference



# Introduction

Terry Massingill  
Retired Assistant Fire Chief  
Monroe Emergency  
Management  
Communications Planner  
IMT Coordinator  
45 yrs. Experience



# Introduction

Jennifer Bowler  
Assistant Director  
Monroe County  
Emergency Management  
15 years Experience in Emergency Management





# Cobalt Magnet Series



The Cobalt Magnet exercise series is a Department of Energy (DOE)/National Nuclear Security Administration (NNSA)-led that focuses on managing the off-site consequences of a radiological or nuclear incident.

Response organizations come together in a full-scale environment to establish working relationships prior to an event; validate concepts of operation; and identify best practices, capability gaps, and areas for improvement.

Southern Exposure 2015: South Carolina



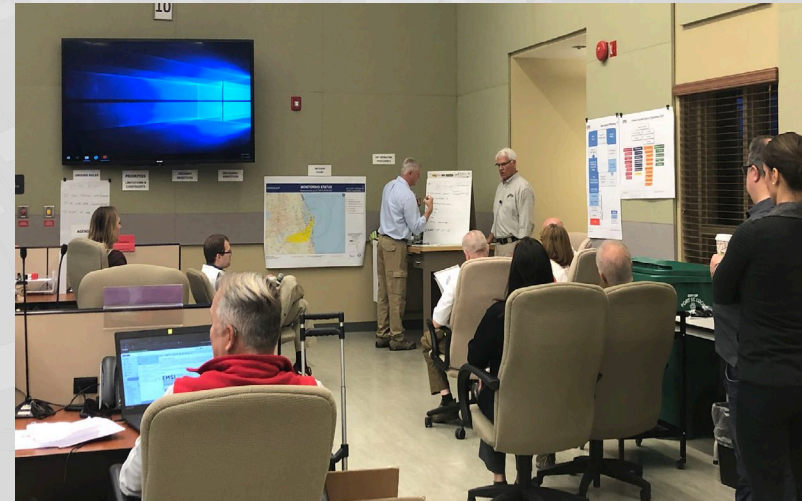
Northern Lights 2016: Minnesota



Cobalt Magnet 2022: Texas



Cobalt Magnet 2019: Florida





# FERMI & DAVIS BESSE POWER PLANTS

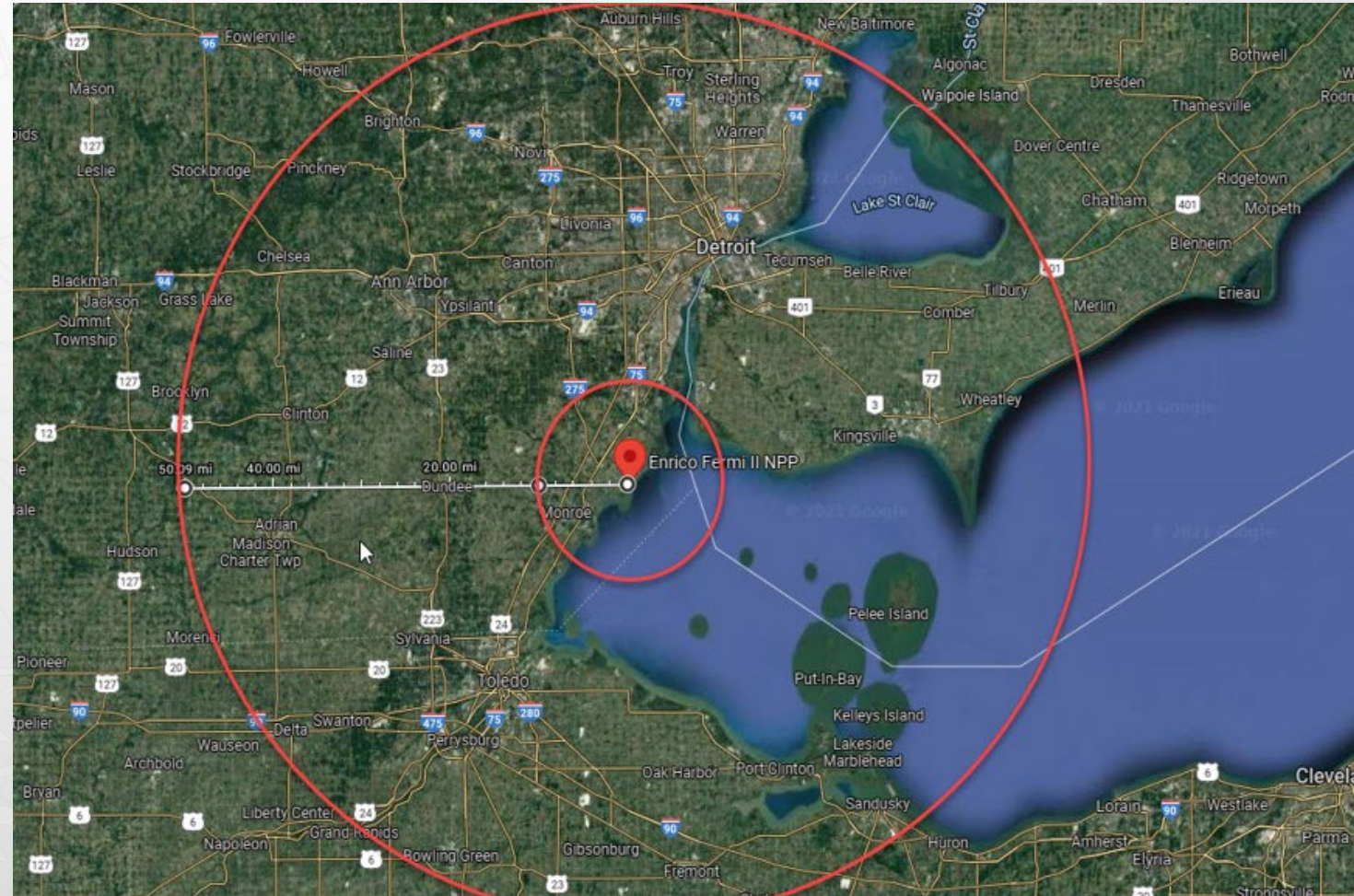




# Cobalt Magnet 2025



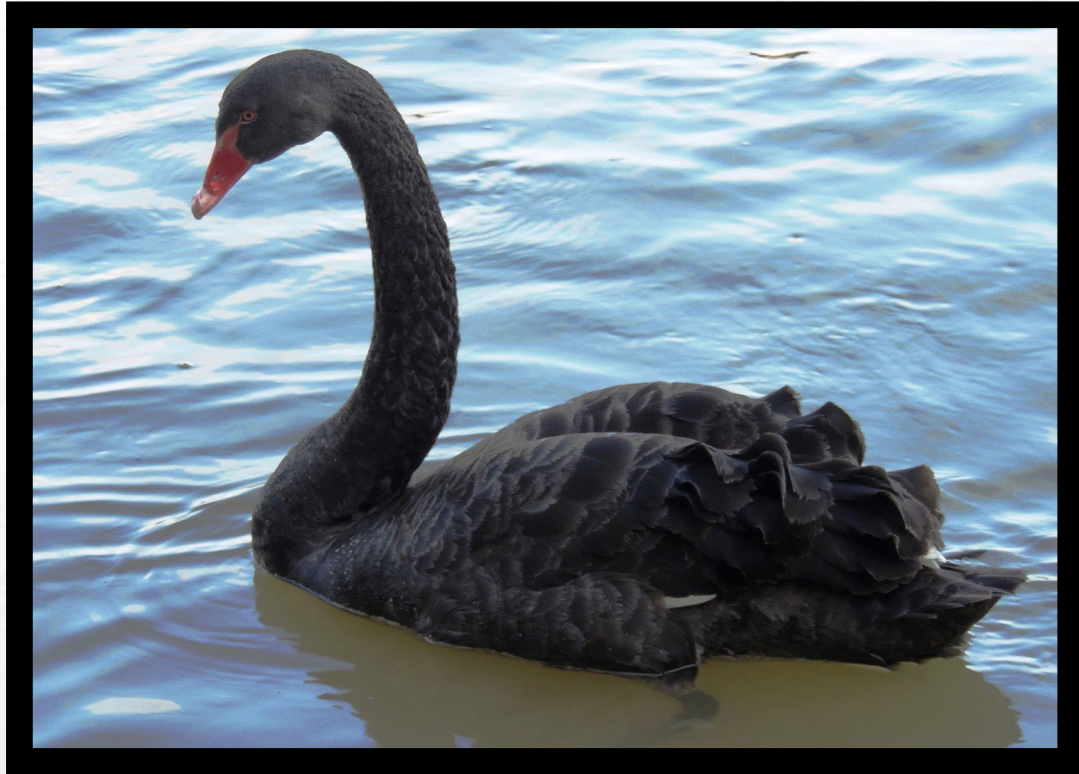
- 15- 21 March 2025
  - 7 Day off-site nuclear power plant release scenario (DOE Led)
- 14-18 April 2025
  - 5-day Long-term Recovery Workshop/Table-Top-Exercise (TTX) (EPA Led)
- CM25 will be conducted outside of evaluated exercises to enable no-fault evaluation and a more challenging scenario (Black Swan)
- International coordination and data harmonization
- Impacted area includes:
  - Michigan, Ohio, Ontario Canada, FEMA Region V and RAP Region V



Fermi II Estimated 10-mile and 50-mile planning zones



# Exercise Scenario

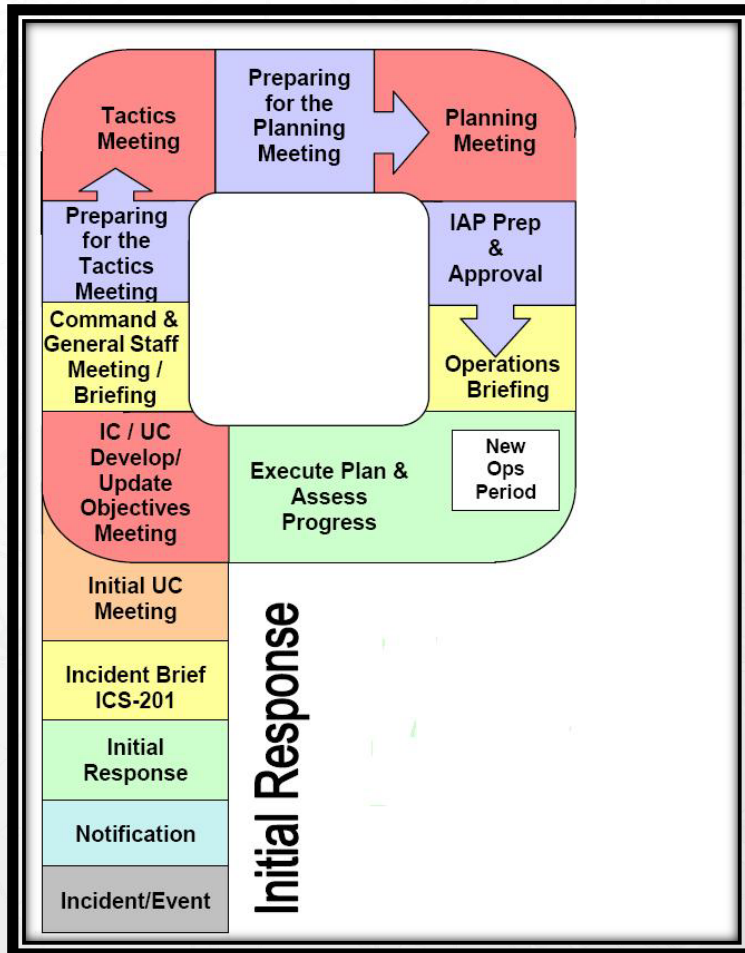


Black Swan is an unpredictable event that is beyond normal expectation with severe consequences



Causes Environmental – Technical-Cyber-Missile Strike

# Response Structure and Key Partners



What does a real-world response structure look like:

- At the State level?
- At the County level?
- At Fermi II?
- At the Federal level?
- In Canada?

Where would Unified Command be located?

Where would the Governor most likely be located?



# Exercise Operational Periods

## Number of Days of Exercise Play

- DOE: 7 days

## Hours for Play

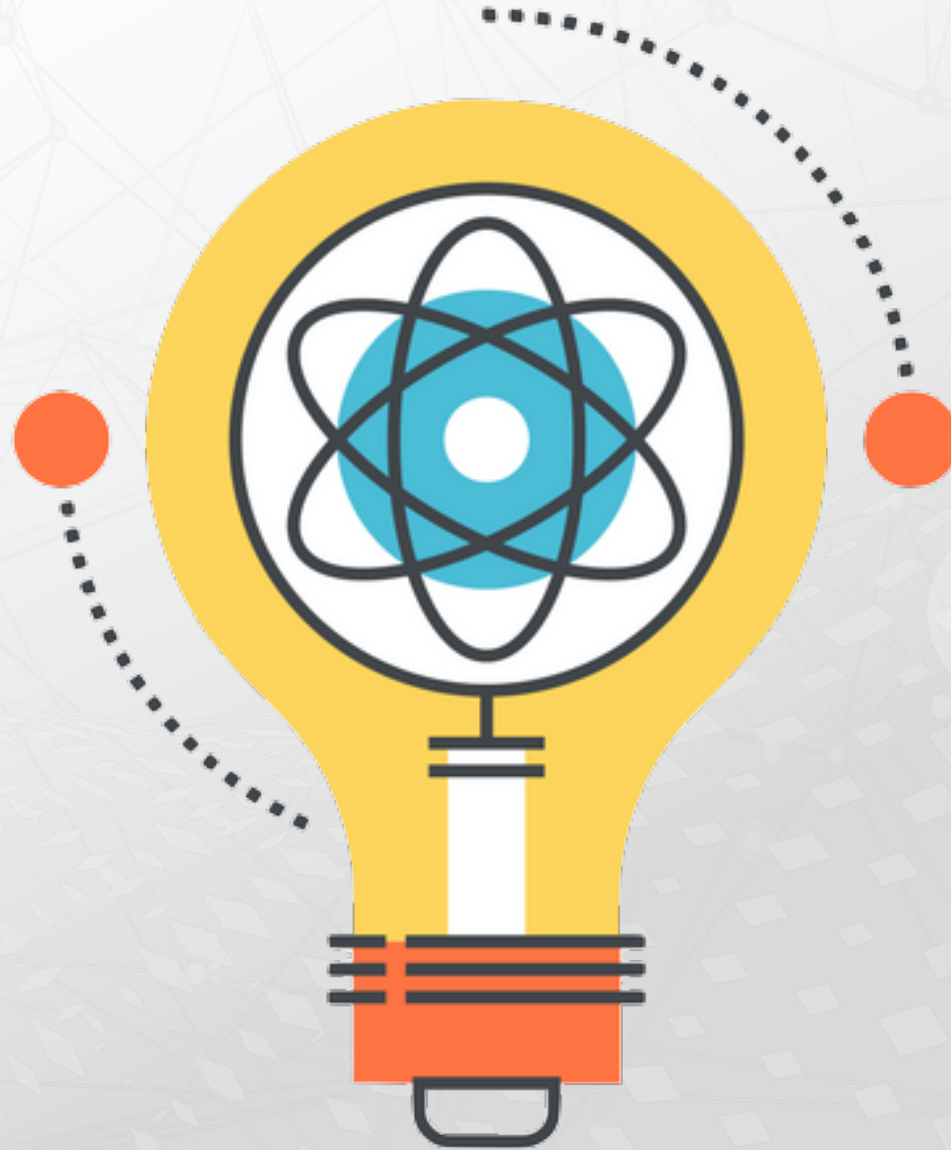
- DOE: 24-hour operations

## Assets Engaged

- DOE:
  - Radiological Assistance Program (RAP), Consequence Management Response Team (CMRT), Aerial Measurement System (AMS), Consequence Management Home Team (CMHT), Nuclear Incident Team (NIT), Radiation Emergency Assistance Center/Training Site (REAC/TS), Incident Management Team (IMT)

Group Discussion on above topics with all other participating agencies

# Cobalt Magnet 2025 Concept Overview





# Agencies Involved

- **Department of Energy (DOE):**
  - Operations and Exercises (OPX)
  - Consequence Management (CM)
  - Aerial Measuring System (AMS)
  - Radiological Assistance Program Region 5 (RAP 5)
  - Office of the Associate Under Secretary for Environment, Health, Safety and Security (AU-20)
  - Incident Management Team (IMT)
  - Office of Cybersecurity, Energy Security, and Emergency Response (CESER)
  - Public Affairs
- **Michigan:**
  - Michigan State Police (MSP)
  - Michigan Department of Environment, Great Lakes, and Energy (EGLE)
  - Fermi-2
  - Michigan Department of Agriculture & Rural Development (MDARD)
  - Monroe County Emergency Management
  - Wayne County Emergency Management
  - Oakland County Emergency Management

# Agencies Involved (2 of 3)

- **Canada:**

- Health Canada
- Emergency Management Ontario

- **Ohio**

- **FEMA:**

- Radiological Emergency Preparedness Program (REPP)
- Nuclear Incident Response Team (NIRT)
- Technological Hazards Division
- FEMA MERS

- **Advisory Team**

- **Food and Drug Administration (FDA)**

- **United States Department of Agriculture (USDA)**

- **Centers for Disease Control (CDC)**

- **Environmental Protection Agency (EPA):**

- Region 5
- Head Quarters
- Airborne Spectral Photometric Environmental Collection Technology (ASPECT)
- National Center for Radiation Field Operations (NCRFO)
- Public Affairs
- Radiological Emergency Response Team (RERT)



# Agencies Involved (3 of 3)

- **Nuclear Regulatory Commission (NRC)**
- **Department of State (DOS)**
- **Department Of Defense (DOD)**
  - Defense Coordinating Officer (DCO)
  - Northern Command (NORTHCOM)
  - Army Norther (ARNORTH)
  - Joint Task Force Civil Support (JTF-CS)
  - Civil Support Team (CST)
  - Defense Chemical, Biological, Radiological, Nuclear (CBRN) Response Force (DCRF)
  - Chemical, Biological, Radiological and Nuclear (CBRN) Response Enterprise(CRE)

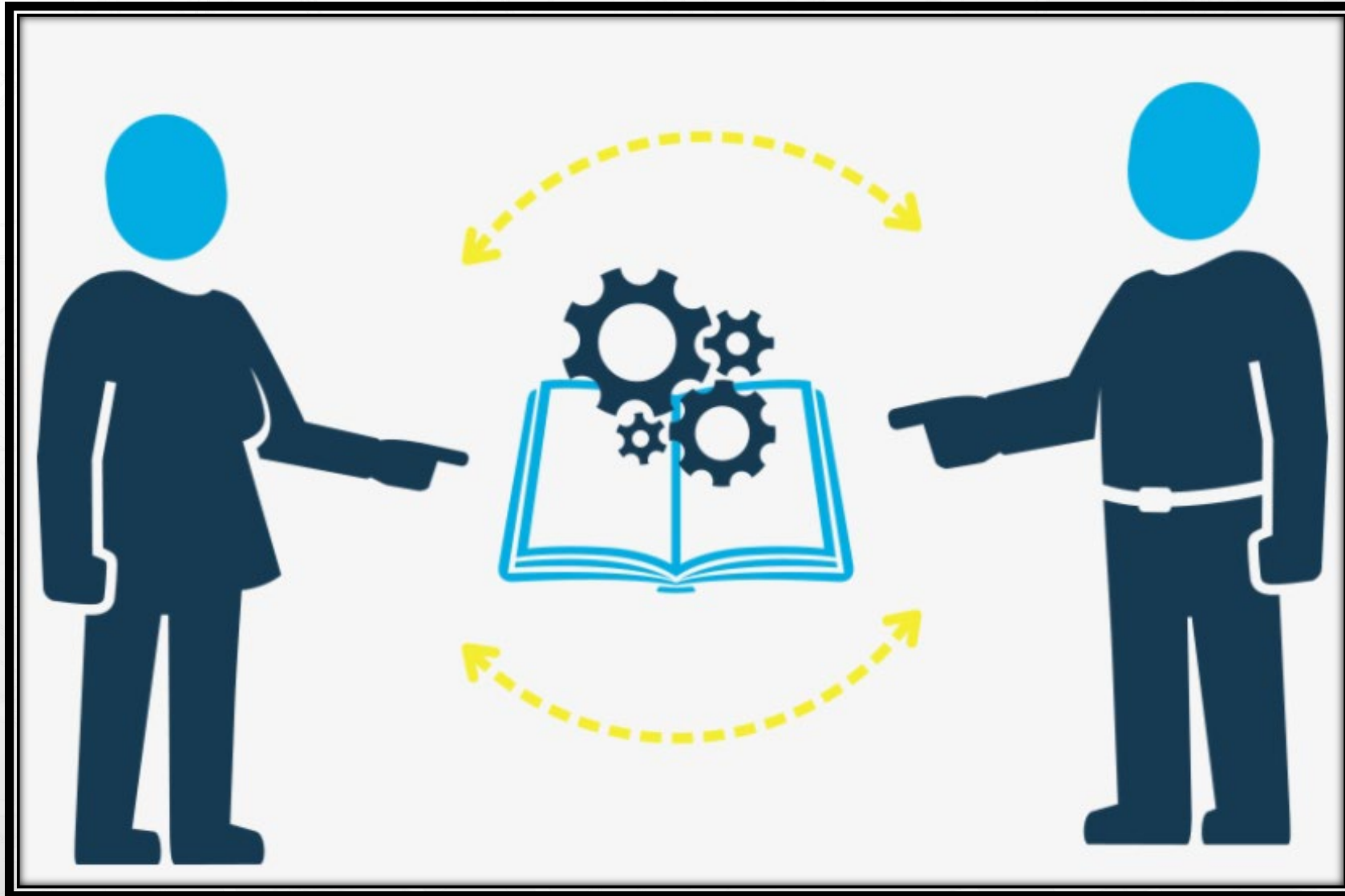
- **Non-Governmental Organizations**
  - Red Cross

# Monroe County Central Dispatch Center

- County operated central dispatch - Police, Fire and Private EMS
- Civilian dispatchers – 24 hr. staffing 1 supervisor, 4 dispatchers
- 549 square miles land and 131 square miles of water = 680 miles
- The sheriffs department is primary police agency throughout the county
- 6 - City, Township and Village police departments
- Michigan State Police
- 18 - Fire Departments: 1 Career, 2 Combination, 15 POC / Volunteer
- 1 -Private ALS ambulance service (part of regional system)
- **The center processes just under 90,000 calls for service per year**



# Monroe County Communications Challenges



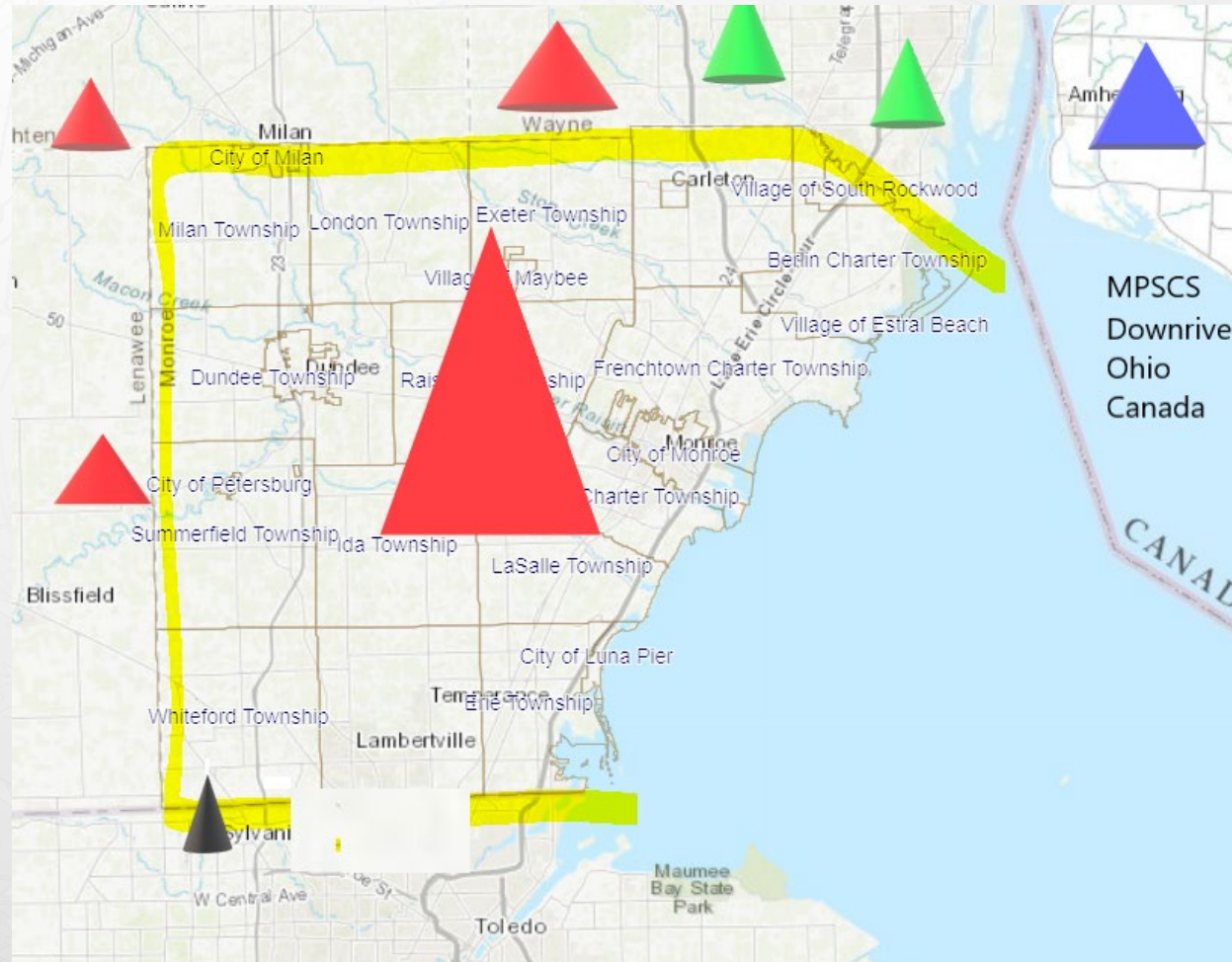
# Radio systems used in area

Orange – MPSCS

Green – Downriver

Black – Lucas county ,Ohio

Blue – Canada Radio

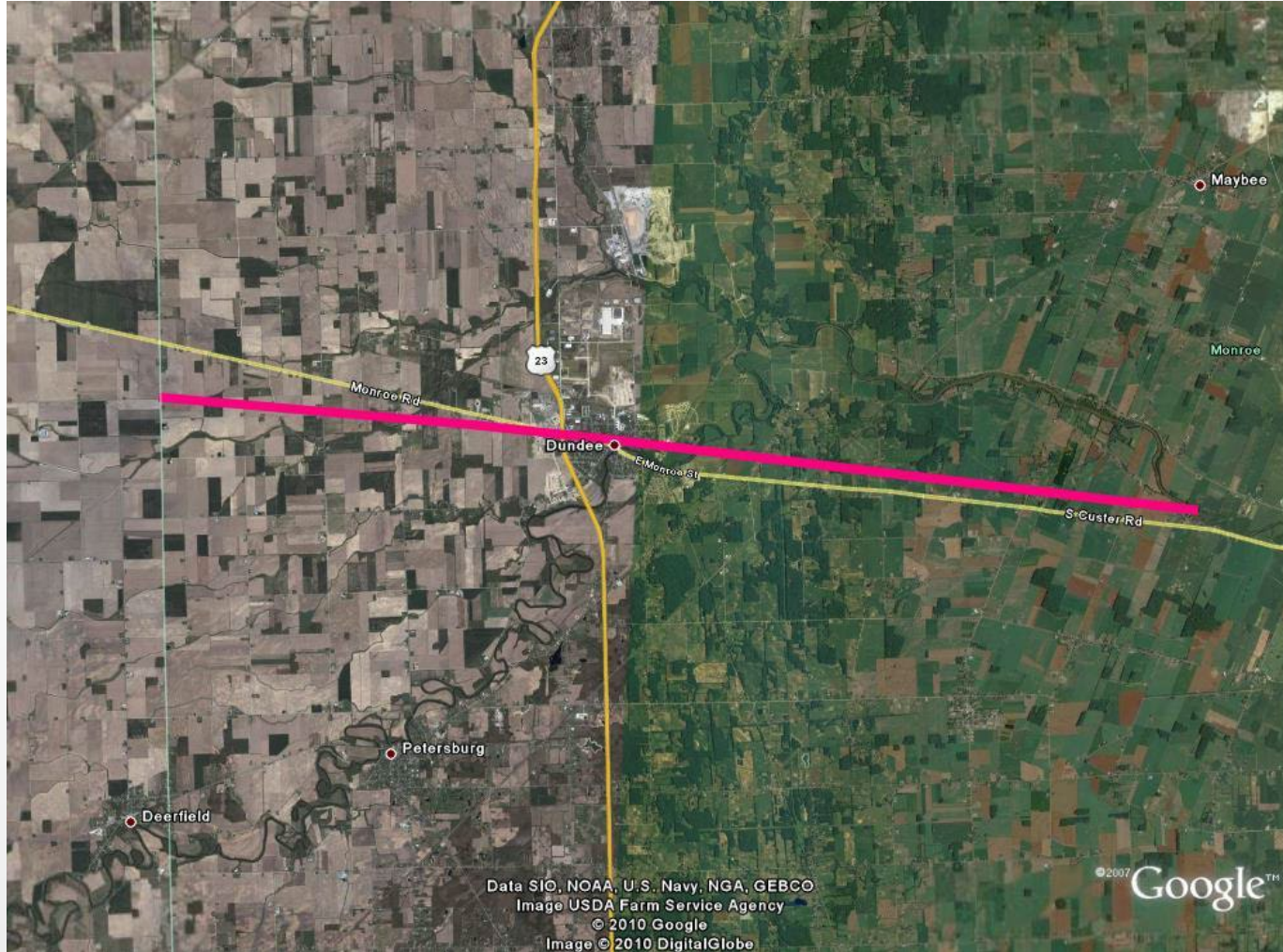




# Large incident communications case studies

- Dundee Tornado 2010
- Toledo Beach Marina fire
- Rockwood chemical plant fire
- Flat Rock fuel leak

# Dundee Tornado 2010



- Fire Departments
  - 5 - Monroe Co.
  - 2 - Washtenaw Co.
  - 3 - Lenawee Co.
- Technical Rescue
  - Lenawee Co.
  - Washtenaw Co.
- Oakland Co. IMT
- Law Enforcement
  - 6- Police Depts.
  - MSP
  - Monroe Co. Sheriff
- CERT



# Rockwood Fire



13 Fire Department

- 8 - Wayne Co
- 7- Monroe Co

Downriver Hazmat

Wayne County HSEM

Monroe Co.EMD  
EOC Activated in  
Monroe

# Toledo Beach Marina Fire

## Massive fire burns down Monroe County marina housing 'million-dollar' boats

By Robin Murdoch and Jack Nissen | Published December 4, 2020 | Updated 11:41PM | Crime and Public Safety | FOX 2 Detroit | ➔



### Top videos

Relatives grow more suspicious as 13-year-old Na'Ziyah Harris remains missing



Detroit basketball legends hold event to raise money for rehabbing St. Cecilia's Gym



Student kicked out of school for sketching gun at Port Huron High School



Detroit Police Corporal continues to serve the force for over 50 years



All Monroe County  
Fire Departments

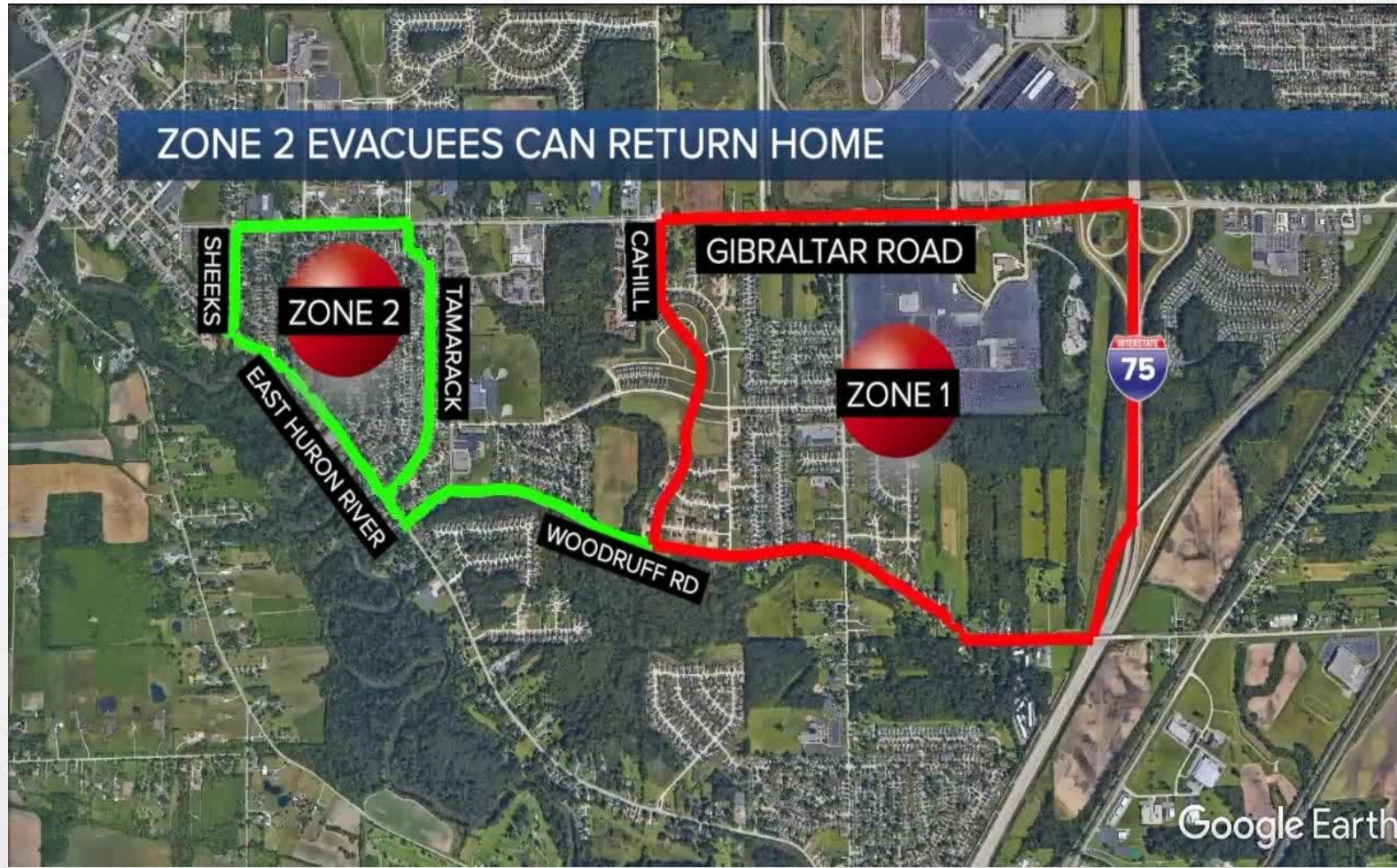
Wayne County FD

- Huron
- Flat Rock
- Rockwood

Downriver Hazmat  
EPA  
Coast Guard  
EGLE



# Flat Rock Fuel Leak Into Sewer System 2021



Command Staff Support from  
10 Fire Depts.

IMT Monroe and Oakland Co.

5- HazMat Teams

EGLE

EPA

CISA

Multi Law Enforcement



# Media Blitz and Disruption of Cellular Service & Internet



Retired Mayor Mark Hammond and retired Fire Chief James Katona address media at one of the many press conference's given at Ford fuel leak incident.



# Verizon To The Rescue at Flat Rock



# First Net

## Monroe County Emergency Management Solution for Connectivity



### Keeping Monroe County Connected When It Counts:

The Response Operations Group is directly linked to State Emergency Operations Centers (EOCs) across the country and embeds within EOCs during disasters, serving as a public safety asset within the appropriate emergency support functions. Among many other resources it has access to:

1. A nationwide, dedicated fleet of over 150+ land-based and airborne portable cell sites. They don't rely on commercial power and connect to FirstNet via satellite.
2. Communications Vehicles (CVs) - In addition to providing connectivity via LTE and/or Wi-Fi, CVs provide an air-conditioned command space for 2 first responder personnel, multiple monitors, charging stations, a large exterior screen and speakers for briefings and so much more.
3. Flying COWs - The 3 Flying COWs™ are able to reach heights of up to 400 feet, making them ideal for situations like wildfires and mountain rescue missions where the terrain may have previously made it difficult to maintain connectivity.

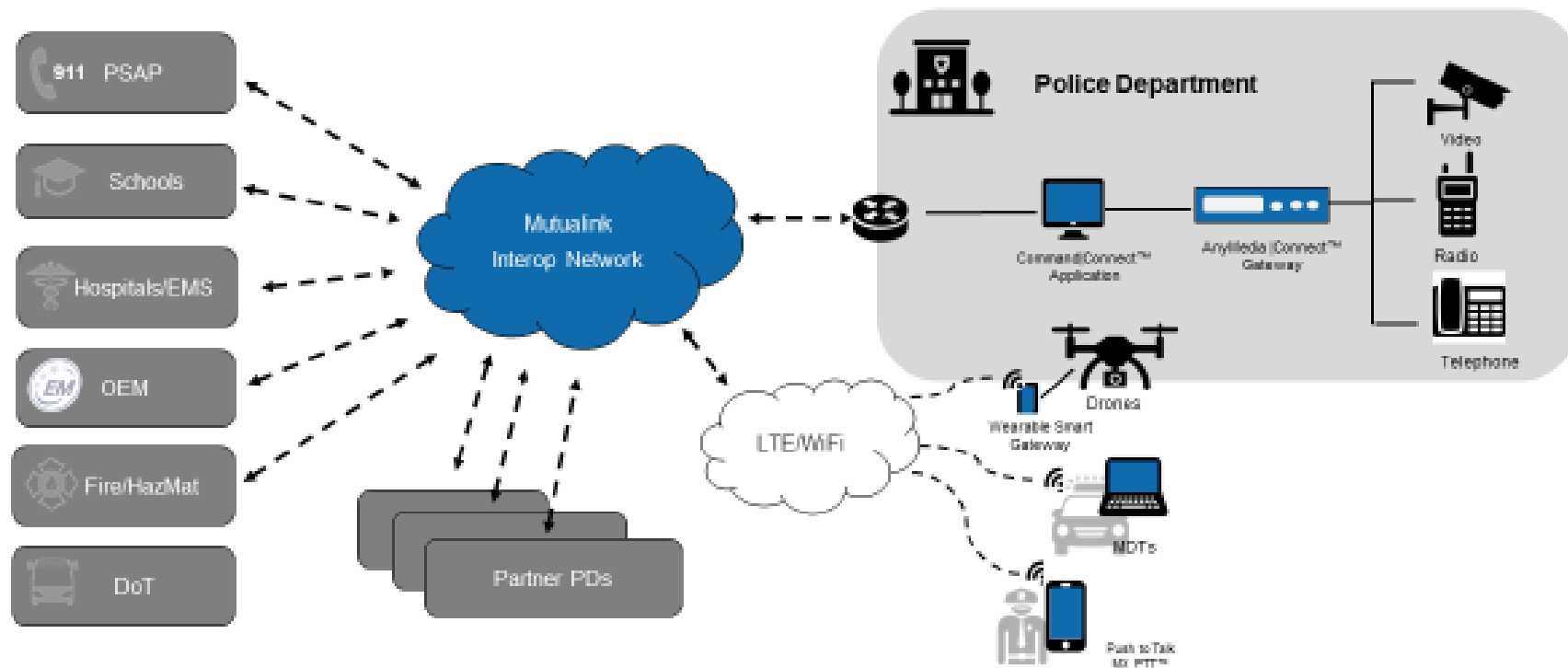


# MUTUALINK Can It Help?

**Mutualink**

## Solution Snapshot – Plugs into All Systems

01:00



U.S. and International Patent Protected.  
Visit: <https://mutualink.net/patents> for more information.

©2022 Mutualink, Inc. All Rights Reserved.

# What is Mutualink 1 of 2

Mutualink gateways for digital and analog LMR radio, video systems, IP data systems, allow users to communicate within their organization or between organizations in a way otherwise not possible. Choose among radio, video, telephone, drone and robot and sensor gateway solutions built to create secure connections between systems.



# What is Mutualink 2 of 2

- Available as virtual, physical or a combination of both, Mutualink gateways can involve both tangible hardware and cloud-based software. These Gateways provide easy connectivity among radio equipment – critically important to police and security forces who wish to add LTE push to talk with streaming video, text, location mapping and data sharing.

# Border Interoperability DEMO Project GRANT

Cross Borders Communications

50-800 Radios Using Tri band 7000s on MPSCS BIP-D Channel

MUTUALINK Consoles located in

Wayne County DHSEM

Metro Airport

Monroe County

City Of Detroit

Washtenaw County

Macomb County

Antennas in the Tunnel to Canada –Essex – Ottawa



# Why Is MUTUALINK Important

- Streamlines Communications
- Provides Redundancy
- Can patch radios channels and talk groups
- Console to Mobile APP

# How we will coordinate during the CBM

- First Net (participate)
- Verizon (participate)
- Mutualink will be utilized



# Local Communication Needs



Training  
Opportunities  
Join the fun  
Training will be  
posted on  
MITRAIN





# Final Comments or Questions



# Contact information

**[Jennifer Bowler@monroemi.org](mailto:Jennifer.Bowler@monroemi.org)**

**[Terry Massingill@monroemi.org](mailto:Terry.Massingill@monroemi.org)**