



## Final Outcomes Report for the Village of Pinckney

**Date:** 8/10/2020

The Final Outcome Report must be submitted at the same time as the Final FSR by the Grantee.

|   |                                   |
|---|-----------------------------------|
| <b>Grant #:</b> HDF-2019-9944-NEP                     |                                   |
| <b>Grant Begin Date:</b> 6/1/2019                     | <b>Grant End Date:</b> 10/31/2020 |
| <b>Grantee:</b> Village of Pinckney                   |                                   |
| <b>Contact:</b> Michelle Brunner                      | <b>Phone:</b> 734-878-6206        |
| <b>Email Address:</b> m.brunner@villageofpinckney.org | <b>Fax:</b> 734-878-9749          |

### **Project Results Summary**

The Village of Pinckney was proud to be able to offer mini grants to 4 homeowners and make numerous improvements and additions to the neighborhood's park with the help of the MSHDA NEP grant. All improvements were made with a focus on safety and accessibility. An indirect result of the improvements is that they also improved the overall aesthetics of the neighborhood.

### **What indicators were used to measure results?**

We used the number of homes that were able to make improvements.

For the park additions and improvements, we looked to see how many people are utilizing the park.

### **How were the indicators measured?**

The home improvements were an actual count of the projects completed.

The park usage was measured by observations made by staff and residents.

We have also been able to factor in positive comments and phone calls the Village has received as feedback.

### **What were the findings of the measurements including baseline data?**

Four homes were improved through the grant and other homeowners in the neighborhood have been taking initiative on their own to make improvements. We have seen a 75% increase in permits and waiver requests this year for improvements on homes in the Portage Dells neighborhood. All comments that have been received on the project have been positive. The housing market in Pinckney has gone from 'warm' to a seller's market.

### **What Lessons were Learned?**

When people make improvements to their home in a neighborhood, other neighbors notice and it encourages them to make improvements to their own home, rather like a domino effect.

Both weather and a pandemic played into our timeline but we hadn't accounted for them. We should have built in a better buffer for our timelines.

### **Leverage Funds Summary**

Not applicable

Upload **before and after photos** of projects/units undertaken with this grant (which have not been previously submitted).

Instructions:

1. Rename photo files with grant #, component/activity and **Before** or **After** (i.e., *HDF-2017-0123-NEP, Park Improvement, Before*)

HDF-2019-9944-NEP  
670 Starfield  
Cement Repairs BEFORE



HDF-2019-9944-NEP  
670 Starfield  
Cement Repairs BEFORE



HDF-2019-9944-NEP  
670 Starfield  
Cement Repairs AFTER



HDF-2019-9944-NEP  
670 Starfield  
Cement Repairs AFTER



HDF-2019-9944-NEP  
670 Starfield  
Cement Repairs AFTER



HDF-2019-9944-NEP  
670 Starfield  
Window Repairs BEFORE



HDF-2019-9944-NEP  
670 Starfield  
Window Repairs BEFORE



HDF-2019-9944-NEP  
670 Starfield  
Window Repairs AFTER



HDF-2019-9944-NEP  
670 Starfield  
Window Repairs AFTER





HDF-2019-9944-NEP  
699 Vincent  
Step and Cement Repairs BEFORE



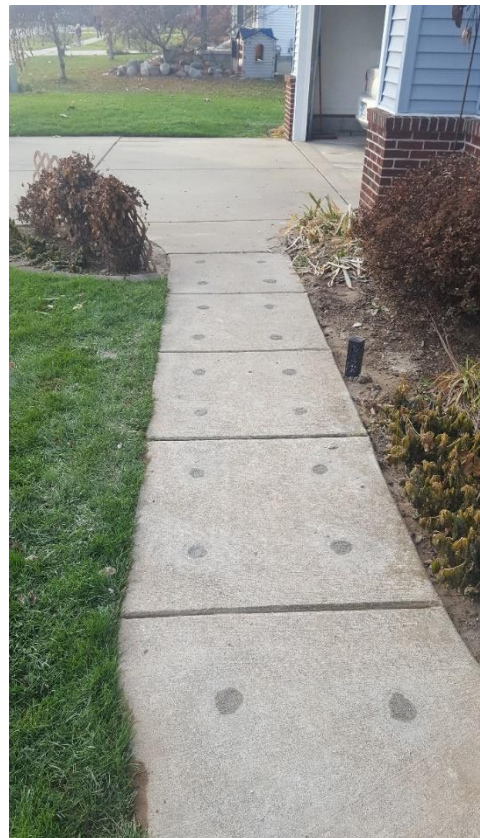
HDF-2019-9944-NEP  
699 Vincent  
Step and Cement Repairs BEFORE



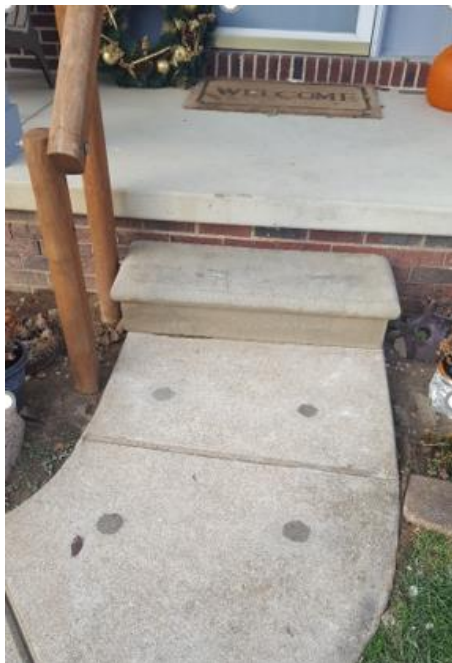
HDF-2019-9944-NEP  
699 Vincent  
Step and Cement Repairs BEFORE



HDF-2019-9944-NEP  
699 Vincent  
Step and Cement Repairs AFTER



HDF-2019-9944-NEP  
699 Vincent  
Step and Cement Repairs AFTER



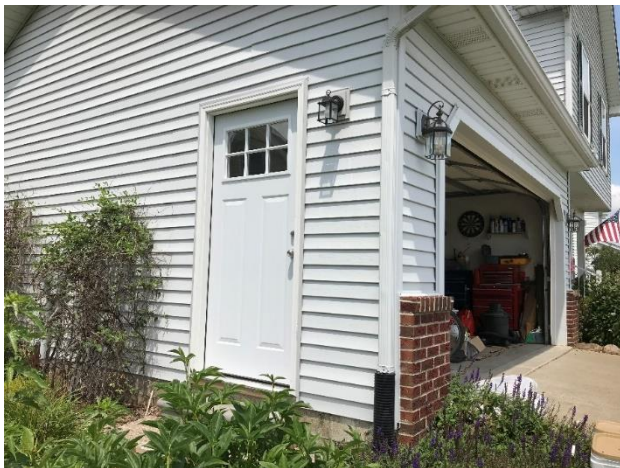
HDF-2019-9944-NEP  
10168 Honeycomb Ct  
Door BEFORE



HDF-2019-9944-NEP  
10168 Honeycomb Ct  
Cement/Handrail Repairs BEFORE



HDF-2019-9944-NEP  
10168 Honeycomb Ct  
Door AFTER



HDF-2019-9944-NEP  
10168 Honeycomb Ct  
Cement/Handrail Repairs AFTER





HDF-2019-9944-NEP  
10369 Barbara  
Deck Repairs BEFORE



HDF-2019-9944-NEP  
10369 Barbara  
Deck Repairs BEFORE



HDF-2019-9944-NEP  
10369 Barbara  
Deck Repairs BEFORE



HDF-2019-9944-NEP  
10369 Barbara  
Deck Repairs BEFORE



HDF-2019-9944-NEP  
10369 Barbara  
Deck Repairs AFTER



HDF-2019-9944-NEP  
10369 Barbara  
Deck Repairs AFTER





HDF-2019-9944-NEP  
10435 Elizabeth  
Loy Bond Park BEFORE



HDF-2019-9944-NEP  
10435 Elizabeth  
Loy Bond Park AFTER



HDF-2019-9944-NEP  
10435 Elizabeth  
Loy Bond Park AFTER



HDF-2019-9944-NEP  
10435 Elizabeth  
Loy Bond Park AFTER





HDF-2019-9944-NEP  
10435 Elizabeth  
Loy Bond Park BEFORE



HDF-2019-9944-NEP  
10435 Elizabeth  
Loy Bond Park AFTER



HDF-2019-9944-NEP  
10435 Elizabeth  
Loy Bond Park AFTER



HDF-2019-9944-NEP  
10435 Elizabeth  
Loy Bond Park AFTER





HDF-2019-9944-NEP  
10435 Elizabeth  
Loy Bond Park BEFORE



HDF-2019-9944-NEP  
10435 Elizabeth  
Loy Bond Park AFTER



HDF-2019-9944-NEP  
10435 Elizabeth  
Loy Bond Park AFTER

