

Big Rapids Housing Commission

Site Stats

Manufacturer	Fairmont Homes, LLC
Model	92581
Lot Dimension	100' X 100'
Home Dimension	30' X 42'
Livable Square Footage	1,260
Style	Ranch
Bedrooms	3
Bathrooms	2
Basement/Crawl Space	Basement
Garage	Garage
Garage At/De/tached	Attached

Site Economics

Build Cost (not including lot)	\$177,970
Appraised Value at Sale	\$180,400
Sales Price Based on Area	
Market Valuation	\$178,000
Date of Sale	8/4/2020

Big Rapids Housing Commission

BUILDING SYSTEM APPROVAL REPORT
Michigan Department of Licensing and Regulatory Affairs
Bureau of Construction Codes
Plan Review Division
P.O. Box 30254
Lansing, MI 48909
(517) 241-9328

Authority: 1972 PA 230
Completion: Mandatory
Penalty: Approval shall be revoked

LARA is an equal opportunity employer/program. Auxiliary aids, services and other reasonable accommodations are available upon request to individual with disabilities.

This document shall be considered the building system approval report by the construction code commission and shall be accepted by any jurisdiction within the state of Michigan subject to that jurisdiction's determination of compliance with the state construction code.

MANUFACTURER DATA

Fairmont Homes, LLC.
502 S Oakland Plant 2
Nappanee, IN 46550

COMPLIANCE ASSURANCE PROGRAM NO.:
451

BUILDING SYSTEM APPROVAL REPORT NO.:
PR2017BCC-001372

TYPE OF APPROVAL:
Modification

DESIGN DATA

DESCRIPTION OF MANUFACTURED MODEL:

92581 30'-8"x42'-0" with Basement, Reverse Basement, Crawlspace, Reverse Crawlspace and Various Options
(108587) Code Update

USE GROUP: R-3
CONSTRUCTION TYPE: 5B
OCCUPANT LOAD:
TYPE OF UNIT: Modular
ROOF LIVE/SNOW LOAD: 38.5 / 53.9
FLOOR LIVE LOAD: 40

GROUND SNOW: 50 / 70
WIND SPEED: 115
ROOF DEAD LOAD: 20
FLOOR DEAD LOAD: 10
HEATING DEGREE DAYS: 9316

APPLICABLE STATE CODES

Building: 2015 Michigan Residential Code

Electrical: 2015 Michigan Residential Code

Mechanical: 2015 Michigan Residential Code

Plumbing: 2015 Michigan Residential Code

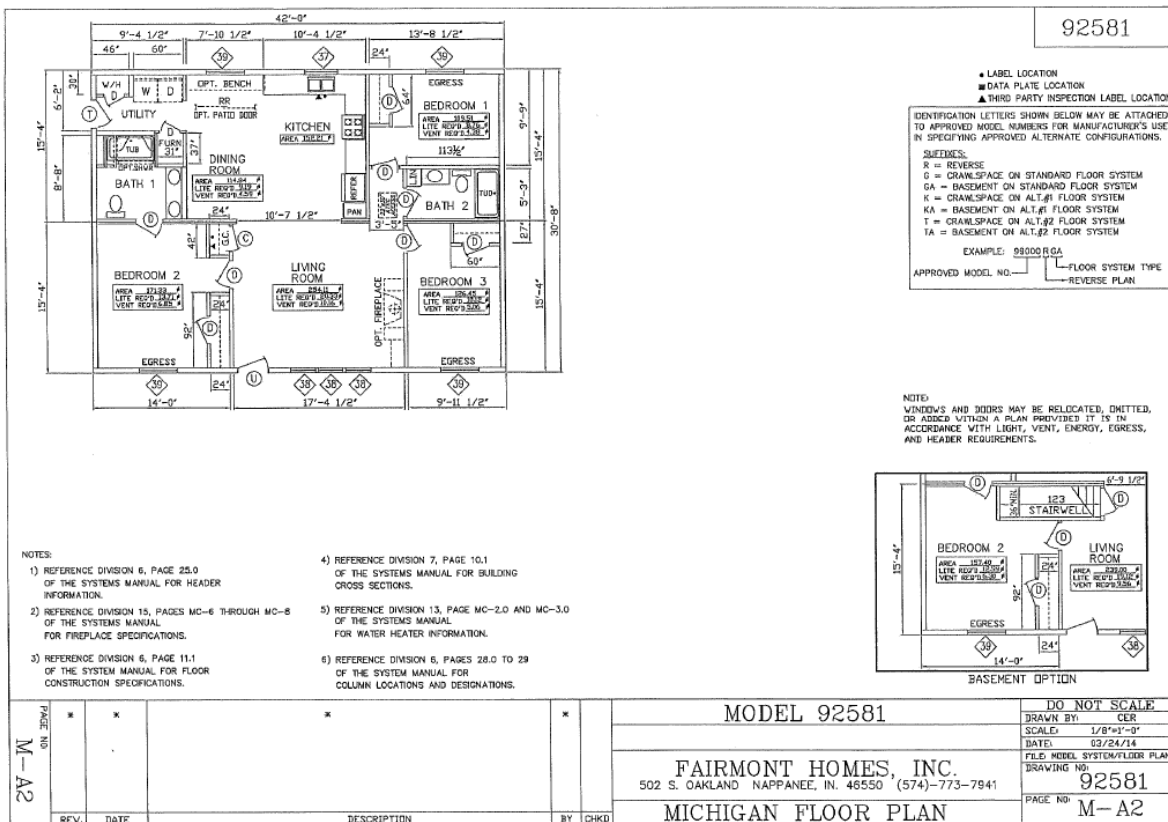
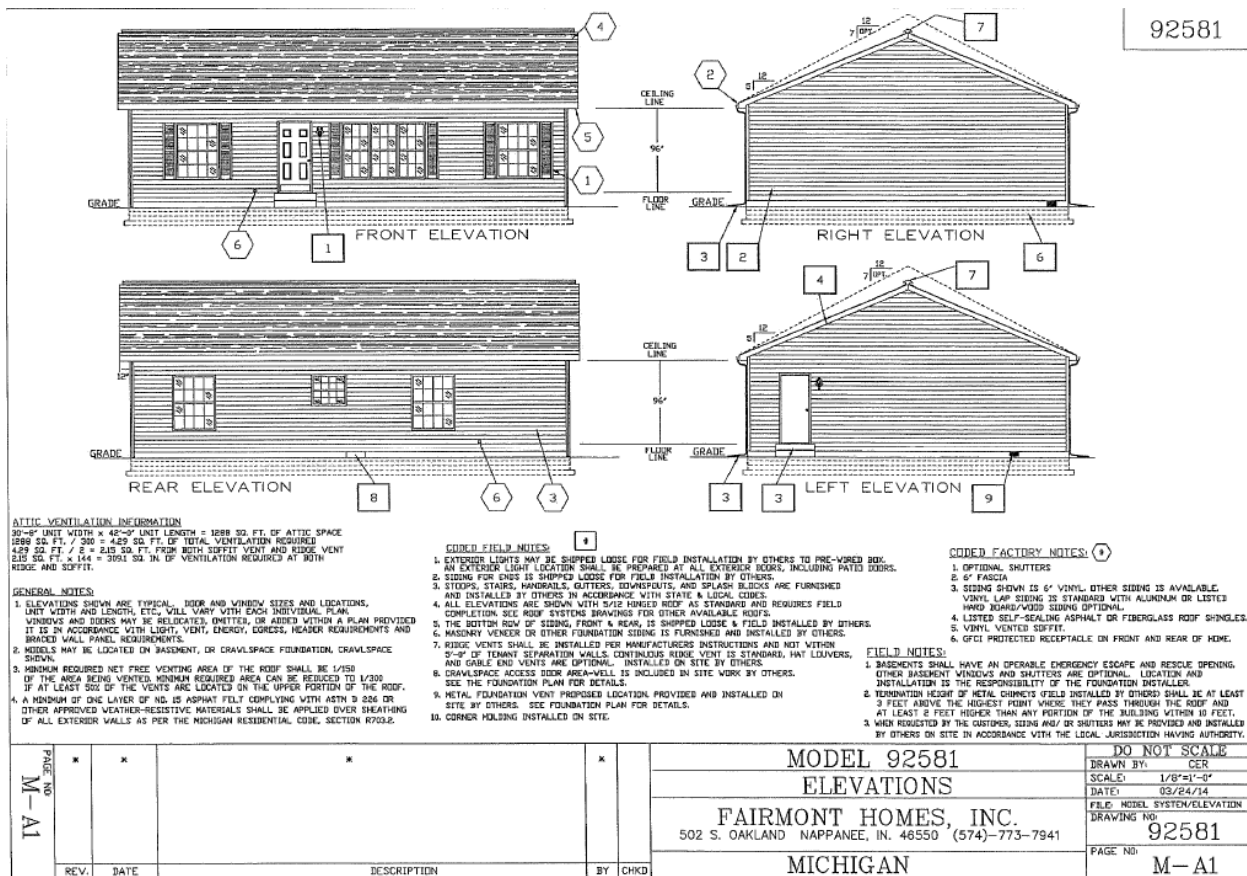
LIMITATIONS OF APPROVAL (IF ANY)

The specific options must be shown as a part of the approved set of plans and shall be identified for each unit manufactured.

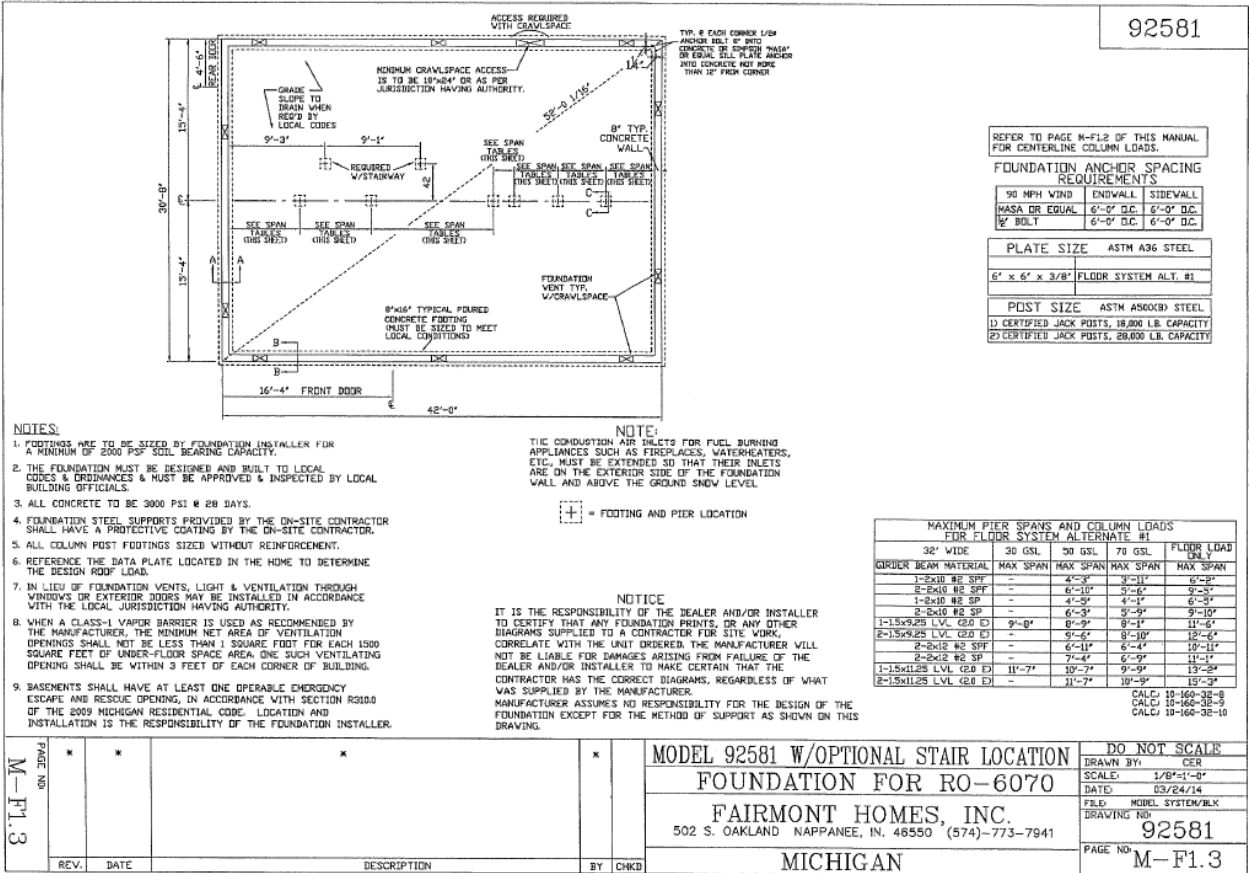
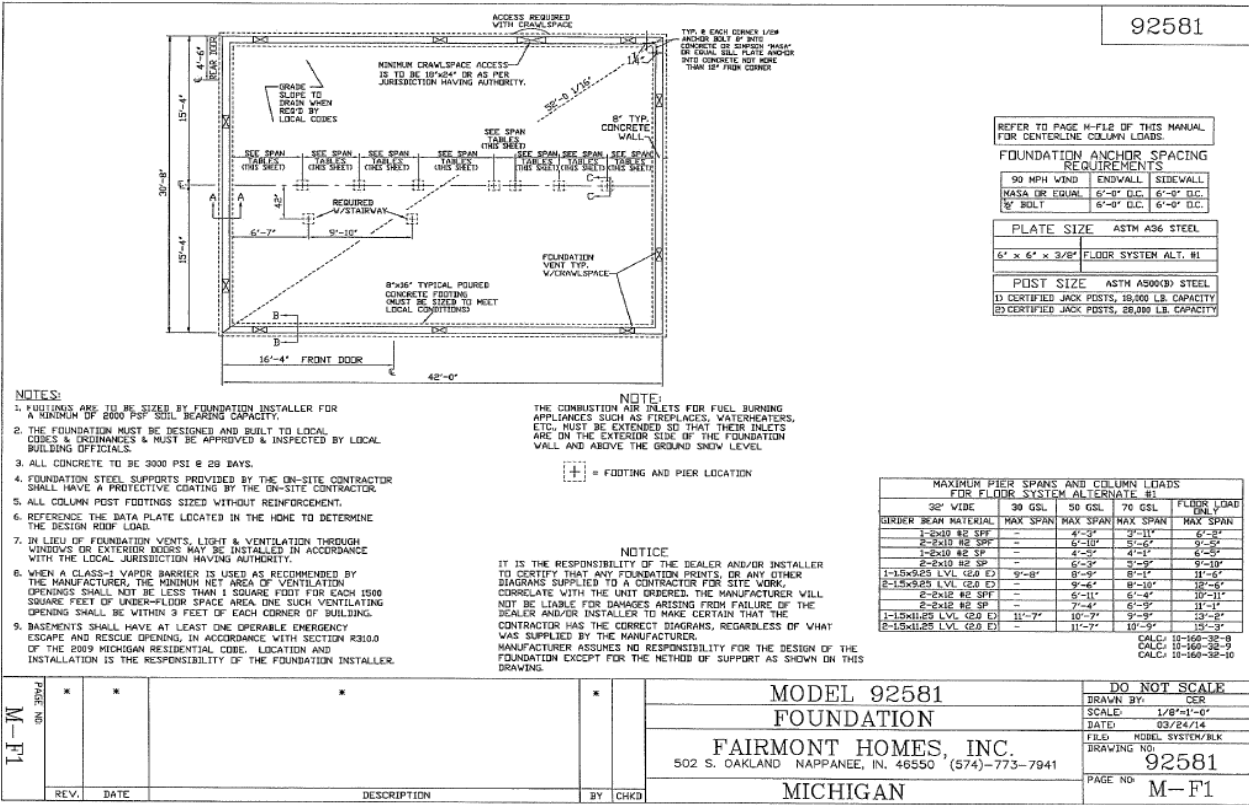


07/12/2017 03:57:18 PM
#[PR2017BCC-001372]

Big Rapids Housing Commission



Big Rapids Housing Commission



Big Rapids Housing Commission



Big Rapids Housing Commission



Big Rapids Housing Commission

