



**DEFINITION**

In Michigan, Arson is defined as to unlawfully and intentionally damage, or attempt to damage, any real or personal property by fire or incendiary devices.

**ANALYSIS**

**VOLUME**

The number of arson offenses reported in Michigan for 2012 was 2,365. This is a reported decrease of 10 percent from 2011 and a 17 percent decrease since 2008.

The largest number of offenses occurred in the month of July and the least amount were committed in December.

**RATE**

The crime rate for this offense was 24 for every 100,000 persons. In 2011, the crime rate was 27 per 100,000 persons.

**CLEARANCES**

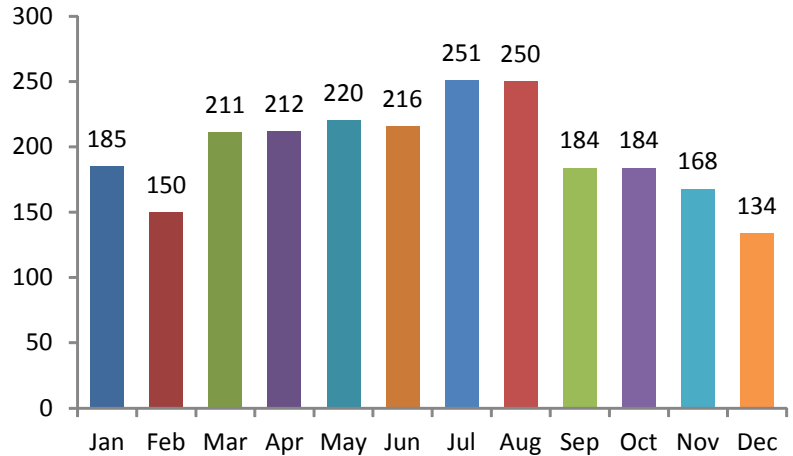
Law enforcement agencies cleared 241 incidents by an arrest or exceptional clearance out of the 2,256 incidents reported. This calculates to a 11 percent clearance rate. In 2011, the clearance rate was 10 percent.

**NATURE**

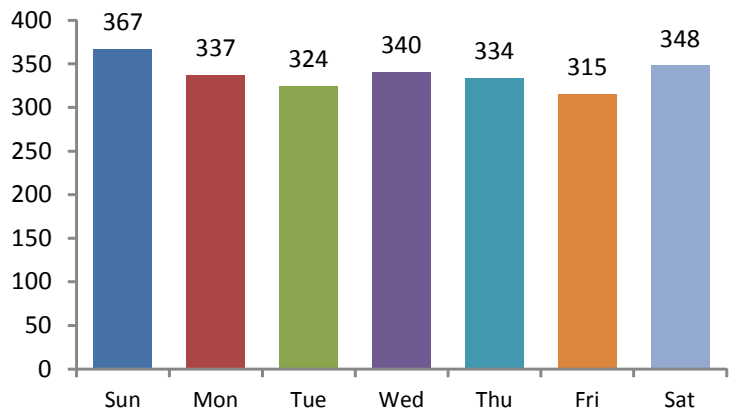
In 2012, arson victims suffered losses totaling \$18,235,920. Structures as a whole experienced a loss of \$13,629,638. Single occupancy structures suffered the most loss at \$8,242,048, which was 45 percent of the total value lost in arsons. Automobiles suffered losses totaling \$3,266,302, which is 18 percent of the total value lost. Other dwelling structures suffered losses totaling \$1,974,663, which was 11 percent of the total value lost. Other structures suffered losses totaling \$1,606,621, which was 9 percent of the total value lost.

Sixteen (16) percent of the arsons were committed on Sundays in 2012. While Fridays reported the least amount of arsons, 13 percent.

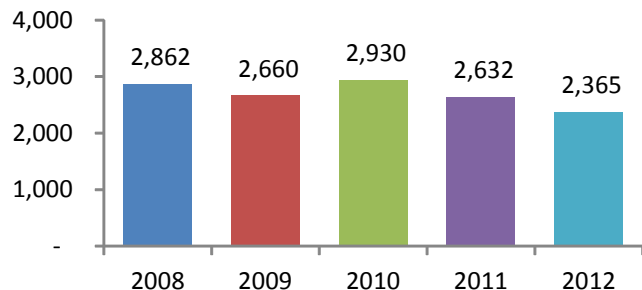
**Offenses by Month**



**Offenses by Day**



**5-Year Trend  
Number of Arsons**



**2012 ARSON ARRESTS**



Age Group		Arrests By Age, Sex, and Race									Grand Total
		FEMALE			MALE						
		Black	White	Total	American Indian/Alaskan Native	Asian/Pacific Islander	Black	Unknown	White	Total	
TOTAL JUVENILES	10 & Under	0	0	0	0	0	1	0	4	5	5
	11-12	1	2	3	0	0	2	1	3	6	9
	13-14	3	1	4	0	0	5	0	8	13	17
	15	0	0	0	0	0	4	0	7	11	11
	16	0	0	0	0	0	1	1	3	5	5
	<b>Total</b>	<b>4</b>	<b>3</b>	<b>7</b>	<b>0</b>	<b>0</b>	<b>13</b>	<b>2</b>	<b>25</b>	<b>40</b>	<b>47</b>
TOTAL ADULTS	17	1	0	1	0	0	5	1	7	13	14
	18	0	0	0	0	0	2	0	13	15	15
	19	1	1	2	0	0	3	1	10	14	16
	20	0	0	0	0	0	2	0	3	5	5
	21	3	0	3	0	0	5	0	7	12	15
	22	1	0	1	1	0	3	0	6	10	11
	23	0	0	0	0	0	1	0	2	3	3
	24	0	1	1	0	0	2	0	2	4	5
	25-29	2	1	3	0	1	7	1	19	28	31
	30-34	1	3	4	0	0	6	0	15	21	25
	35-39	1	5	6	0	0	5	0	13	18	24
	40-44	2	2	4	0	0	3	0	2	5	9
	45-49	0	4	4	0	0	4	0	13	17	21
	50-54	2	3	5	0	0	3	0	2	5	10
	55-59	0	0	0	0	0	4	0	7	11	11
	60-64	1	0	1	0	0	1	0	2	3	4
65 & Above	0	0	0	0	0	0	0	1	1	1	
<b>Total</b>	<b>15</b>	<b>20</b>	<b>35</b>	<b>1</b>	<b>1</b>	<b>56</b>	<b>3</b>	<b>124</b>	<b>185</b>	<b>220</b>	
<b>Grand Total:</b>	<b>19</b>	<b>23</b>	<b>42</b>	<b>1</b>	<b>1</b>	<b>69</b>	<b>5</b>	<b>149</b>	<b>225</b>	<b>267</b>	