

DEFINITION

Burglary-Forced Entry is the unlawful forcible entry of a building or other structure with the intent to commit a theft or felony. This does not apply to motor vehicles or coin boxes.

ANALYSIS

VOLUME

The number of burglaries with forced entry committed in Michigan in 2016 was 30,731. This is a reported decrease of four percent from 2015 and a forty-three percent decrease since 2012.

The largest number of offenses occurred in the month of August. The least amount occurred in February.

RATE

The crime rate for this offense was 310 for every 100,000 persons. In 2015 the crime rate was 322 per 100,000 persons. This is a reported four percent decrease in the crime rate.

CLEARANCES

Law enforcement agencies cleared 3,079 incidents by an arrest or exceptional clearance out of the 30,330 incidents reported. This calculates to a ten percent clearance rate.

NATURE

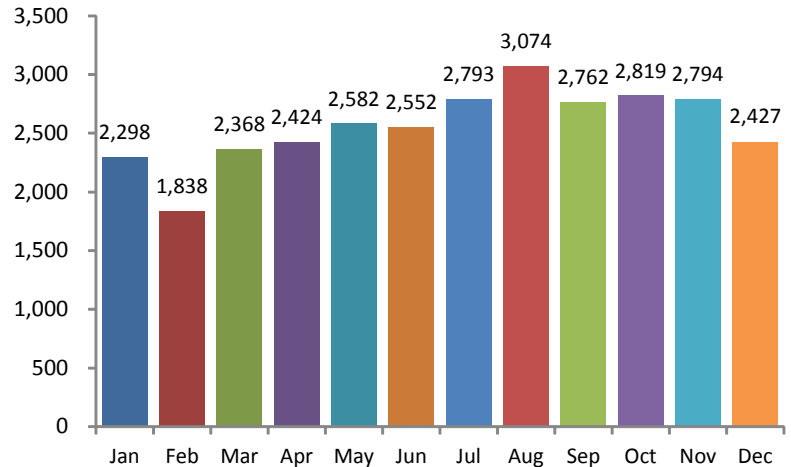
In 2016, seventy-seven percent of these offenses occurred most often at a Residence/Home. Commercial/Office Buildings were burglarized four percent of the time. The majority of forced entry burglaries in Michigan for 2016 occurred on Fridays. The least amount of offenses occurred on Sundays.

OFFENDERS

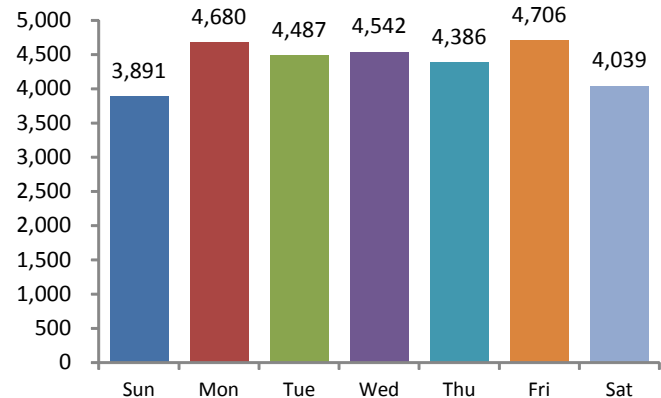
In fifty-four percent of the offenses reported to law enforcement agencies the suspect or offender was Unknown. Among the known offender information, eighty-three percent of the offenders were reported as Males and sixteen percent were Females.

Thirty-eight percent of the offenses were committed by White Males while ten percent were committed by White Females. Black Males were involved in thirty-eight percent of these offenses and Black Females were involved in five percent of these offenses.

Offenses by Month

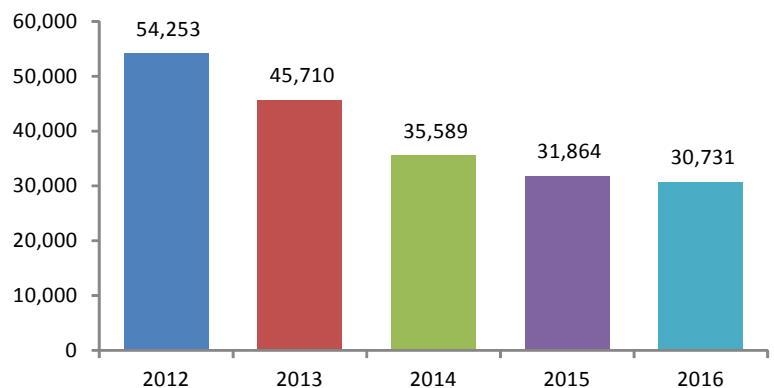


Offenses by Day



5-Year Trend

Number of Offenses



2016 Burglary-Forced Entry Arrests



Age Group		Arrests By Age, Sex, and Race										Total
		FEMALE				MALE						
		Black	Unknown	White	Total	American Indian/Alaskan Native	Asian/Pacific Islander	Black	Unknown	White	Total	
Total Juveniles	10 & Under	1	0	0	1	0	0	3	2	7	12	13
	11-12	2	0	2	4	0	0	24	4	19	47	51
	13-14	3	0	8	11	0	0	64	2	74	140	151
	15	6	2	9	17	0	0	57	3	40	100	117
	16	1	0	4	5	0	1	46	12	49	108	113
	Total	13	2	23	38	0	1	194	23	189	407	445
Total Adults	17	4	2	10	16	0	0	77	5	62	144	160
	18	5	2	12	19	1	3	71	6	77	158	177
	19	7	0	5	12	1	0	54	8	69	132	144
	20	8	1	4	13	0	0	54	1	52	107	120
	21	8	2	11	21	0	0	33	6	40	79	100
	22	3	0	7	10	0	0	40	1	45	86	96
	23	3	0	7	10	0	0	50	1	42	93	103
	24	6	0	7	13	0	0	35	6	47	88	101
	25-29	16	1	46	63	3	0	134	15	208	360	423
	30-34	12	0	30	42	0	1	70	8	183	262	304
	35-39	10	0	23	33	0	1	82	7	121	211	244
	40-44	7	1	22	30	0	0	48	1	48	97	127
	45-49	4	0	13	17	0	0	52	2	66	120	137
	50-54	2	0	7	9	0	0	29	2	50	81	90
	55-59	1	1	5	7	0	0	16	3	21	40	47
	60-64	0	0	2	2	0	0	8	0	6	14	16
65 & Above	0	0	0	0	0	0	0	0	5	5	5	
Total	96	10	211	317	5	5	853	72	1,142	2,077	2,394	
Grand Total:	109	12	234	355	5	6	1,047	95	1,331	2,484	2,839	

2016 Burglary- Entry Without Force Arrests



		Arrests By Age, Sex, and Race								Total
		FEMALE				MALE				
		Black	Unknown	White	Total	Black	Unknown	White	Total	
Age Group		Black	Unknown	White	Total	Black	Unknown	White	Total	Total
Total Juveniles	10 & Under	0	0	0	0	0	0	1	1	1
	11-12	0	0	0	0	3	0	1	4	4
	13-14	0	0	1	1	6	0	7	13	14
	15	0	0	4	4	5	1	13	19	23
	16	1	0	4	5	8	0	24	32	37
	Total	1	0	9	10	22	1	46	69	79
Total Adults	17	1	0	5	6	14	2	15	31	37
	18	2	0	2	4	13	0	28	41	45
	19	0	1	3	4	15	1	20	36	40
	20	0	0	0	0	6	1	13	20	20
	21	1	0	5	6	10	1	14	25	31
	22	3	1	2	6	3	0	9	12	18
	23	0	0	2	2	5	0	10	15	17
	24	1	1	4	6	9	0	8	17	23
	25-29	3	2	17	22	24	2	45	71	93
	30-34	2	0	12	14	9	4	43	56	70
	35-39	0	0	6	6	8	0	26	34	40
	40-44	0	0	6	6	5	3	12	20	26
	45-49	1	0	6	7	6	0	14	20	27
	50-54	1	0	1	2	11	0	10	21	23
	55-59	0	0	1	1	5	1	7	13	14
	60-64	0	0	1	1	0	0	7	7	8
65 & Above	0	0	0	0	1	0	1	2	2	
Total	15	5	73	93	144	15	282	441	534	
Grand Total:		16	5	82	103	166	16	328	510	613