

**DEFINITION**

Arson is to unlawfully and intentionally damage, or attempt to damage, any real or personal property by fire or incendiary device.

**ANALYSIS**

**VOLUME**

The number of arson offenses reported in 2018 was 1,760. This is a reported decrease of nine percent from 2017 and a three percent increase since 2014.

The largest number of offenses occurred in the month of July and the least amount were committed in February.

**RATE**

The crime rate for this offense was 18 for every 100,000 persons. In 2017, the crime rate was 20 per 100,000 persons.

**CLEARANCES**

Law enforcement agencies cleared 233 incidents by an arrest or exceptional clearance out of the 1,659 incidents reported. This calculates to a fourteen percent clearance rate.

**NATURE**

In 2018, more arsons were committed on Monday; the least amount of arsons occurred on Wednesdays.

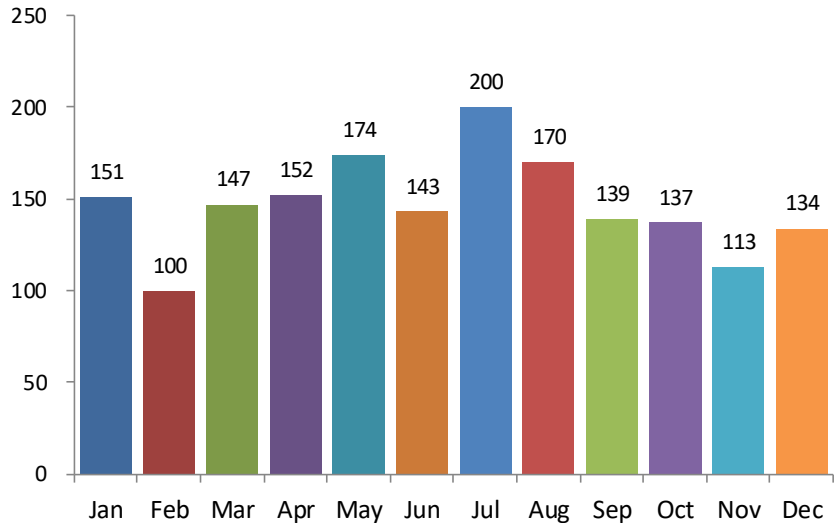
Sixty-three percent of the arsons occurred most often at a Residence/Home. Thirteen percent of the arsons occurred at the location of Highway/Road/Alley.

**OFFENDERS**

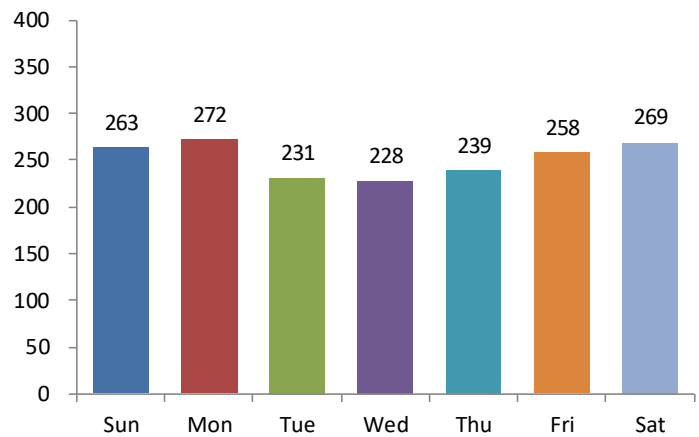
In fifty-seven percent of the offenses reported to law enforcement agencies, the suspect or offender was Unknown. Among the offenses where offender information was known (829), seventy-six percent of the offenders were Males and twenty-four percent were Females.

White Males committed forty-three percent of the arsons and Black/African American Males committed twenty-nine percent. Black/African American Females committed twelve percent of the offenses and White Females committed ten percent.

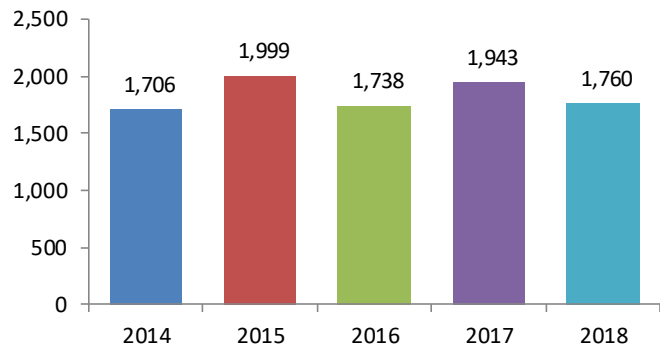
**Offenses by Month**



**Offenses by Day**



**5-Year Trend  
Number of Offenses**



## 2018 Arson Arrests

|                     |                        | Arrests by Age, Sex, and Race |           |                                |                                |                        |            |            |             | Grand Total |
|---------------------|------------------------|-------------------------------|-----------|--------------------------------|--------------------------------|------------------------|------------|------------|-------------|-------------|
|                     |                        | FEMALE                        |           |                                | MALE                           |                        |            |            |             |             |
|                     |                        | Black/African American        | White     | Total                          | American Indian/Alaskan Native | Black/African American | Unknown    | White      | Total       |             |
| Age Group           | Black/African American | White                         | Total     | American Indian/Alaskan Native | Black/African American         | Unknown                | White      | Total      | Grand Total |             |
| Total Juveniles     | 10 & Under             | 0                             | 0         | 0                              | 0                              | 0                      | 0          | 5          | 5           | 5           |
|                     | 11-12                  | 0                             | 2         | 2                              | 0                              | 1                      | 2          | 3          | 6           | 8           |
|                     | 13-14                  | 0                             | 0         | 0                              | 0                              | 3                      | 0          | 9          | 12          | 12          |
|                     | 15                     | 1                             | 0         | 1                              | 0                              | 3                      | 0          | 2          | 5           | 6           |
|                     | 16                     | 0                             | 0         | 0                              | 0                              | 1                      | 0          | 3          | 4           | 4           |
|                     | <b>Total</b>           | <b>1</b>                      | <b>2</b>  | <b>3</b>                       | <b>0</b>                       | <b>8</b>               | <b>2</b>   | <b>22</b>  | <b>32</b>   | <b>35</b>   |
| Total Adults        | 17                     | 0                             | 1         | 1                              | 0                              | 1                      | 0          | 3          | 4           | 5           |
|                     | 18                     | 2                             | 0         | 2                              | 0                              | 2                      | 0          | 5          | 7           | 9           |
|                     | 19                     | 0                             | 0         | 0                              | 0                              | 1                      | 0          | 0          | 1           | 1           |
|                     | 20                     | 0                             | 1         | 1                              | 0                              | 2                      | 0          | 5          | 7           | 8           |
|                     | 22                     | 0                             | 0         | 0                              | 0                              | 3                      | 0          | 1          | 4           | 4           |
|                     | 23                     | 0                             | 0         | 0                              | 0                              | 1                      | 1          | 2          | 4           | 4           |
|                     | 24                     | 2                             | 0         | 2                              | 0                              | 0                      | 0          | 1          | 1           | 3           |
|                     | 25-29                  | 4                             | 3         | 7                              | 0                              | 12                     | 0          | 20         | 32          | 39          |
|                     | 30-34                  | 6                             | 4         | 10                             | 0                              | 8                      | 1          | 7          | 16          | 26          |
|                     | 35-39                  | 3                             | 1         | 4                              | 0                              | 5                      | 1          | 17         | 23          | 27          |
|                     | 40-44                  | 2                             | 0         | 2                              | 1                              | 3                      | 0          | 3          | 7           | 9           |
|                     | 45-49                  | 0                             | 3         | 3                              | 0                              | 1                      | 0          | 2          | 3           | 6           |
|                     | 50-54                  | 1                             | 3         | 4                              | 0                              | 0                      | 0          | 7          | 7           | 11          |
|                     | 55-59                  | 3                             | 0         | 3                              | 0                              | 1                      | 0          | 13         | 14          | 17          |
|                     | 60-64                  | 1                             | 0         | 1                              | 0                              | 2                      | 0          | 2          | 4           | 5           |
| 65 & Above          | 0                      | 1                             | 1         | 0                              | 0                              | 0                      | 0          | 0          | 1           |             |
| <b>Total</b>        | <b>24</b>              | <b>17</b>                     | <b>41</b> | <b>1</b>                       | <b>42</b>                      | <b>3</b>               | <b>88</b>  | <b>134</b> | <b>175</b>  |             |
| <b>Grand Total:</b> | <b>25</b>              | <b>19</b>                     | <b>44</b> | <b>1</b>                       | <b>50</b>                      | <b>5</b>               | <b>110</b> | <b>166</b> | <b>210</b>  |             |