

DEFINITION

Burglary-Forced Entry is *the unlawful forcible entry of a building or other structure with the intent to commit a theft or felony. This does not apply to motor vehicles or coin boxes.*

ANALYSIS

VOLUME

The number of burglaries with forced entry committed in 2019 was 22,620. This is a reported decrease of 11 percent from 2018 and a 29 percent decrease since 2015.

The largest number of offenses occurred in the month of July. The lowest amount occurred in February.

RATE

The crime rate for this offense was 226 for every 100,000 persons. In 2018, the crime rate was 256 per 100,000 persons. This is a reported 12 percent decrease in the crime rate.

CLEARANCES

Law enforcement agencies cleared 2,676 incidents by an arrest or exceptional clearance out of the 22,193 incidents reported. This calculates to a 12 percent clearance rate.

NATURE

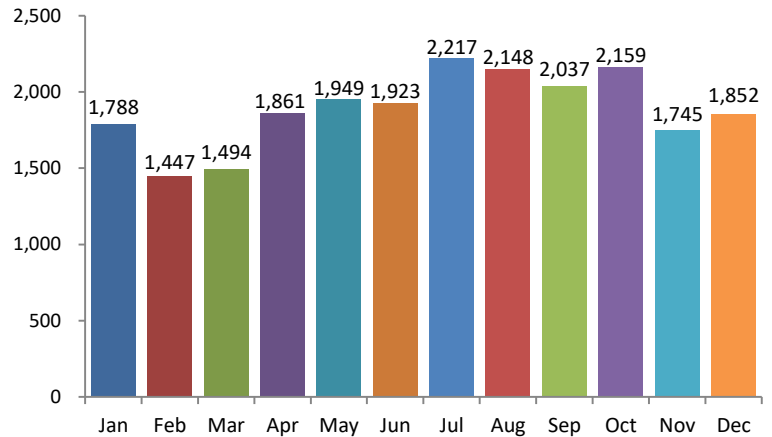
In 2019, 74 percent of these offenses occurred most often at a Residence/Home. Commercial/Office Buildings were burglarized in four percent of the instances. The majority of forced entry burglaries in 2019 occurred on Mondays. The lowest amount of offenses occurred on Saturdays.

OFFENDERS

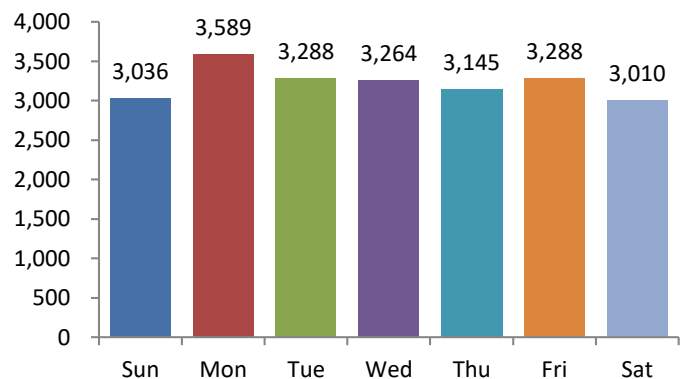
In 59 percent of the offenses reported to law enforcement agencies the suspect or offender was Unknown. Among the known offender information, 66 percent of the offenders were reported as Males and 15 percent were Females.

Thirty-three percent of the offenses were committed by White Males while nine percent were committed by White Females. Black/African American Males were involved in 28 percent of these offenses and Black/African American Females were involved in five percent of these offenses.

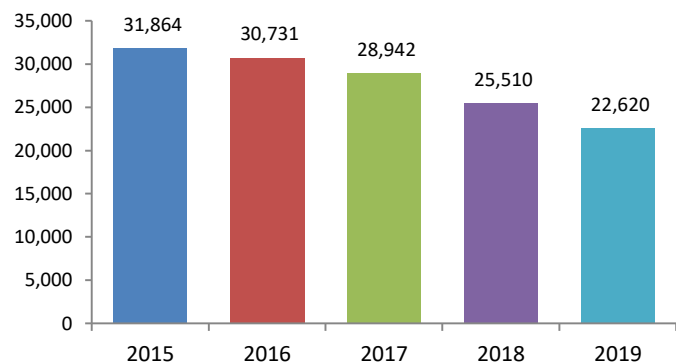
Offenses by Month



Offenses by Day



5-Year Trend Number of Offenses



2019 Burglary-Forced Entry Arrests



Age Group		Arrests By Age, Sex, and Race										Grand Total
		FEMALE				MALE						
		Black/African American	Unknown	White	Total	American Indian/Alaskan Native	Asian	Black/African American	Unknown	White	Total	
Total Juveniles	10 & Under	0	0	0	0	0	0	1	0	1	2	2
	11-12	1	0	1	2	0	0	7	0	7	14	16
	13-14	3	1	5	9	0	0	30	6	31	67	76
	15	3	0	2	5	0	0	20	5	33	58	63
	16	3	0	5	8	0	0	24	0	32	56	64
	17	3	1	2	6	2	0	29	4	35	70	76
	Total	13	2	15	30	2	0	111	15	139	267	297
Total Adults	18	6	0	7	13	0	0	47	1	21	69	82
	19	8	0	3	11	0	0	31	3	34	68	79
	20	2	0	2	4	1	0	22	0	26	49	53
	21	4	0	7	11	0	0	21	2	31	54	65
	22	5	0	6	11	0	0	33	2	19	54	65
	23	7	0	7	14	2	0	27	2	22	53	67
	24	3	1	4	8	0	1	32	1	28	62	70
	25-29	30	0	41	71	0	1	169	4	133	307	378
	30-34	19	2	37	58	0	0	88	3	153	244	302
	35-39	13	0	30	43	0	0	60	4	131	195	238
	40-44	9	0	26	35	0	0	45	2	79	126	161
	45-49	11	1	6	18	0	0	22	1	44	67	85
	50-54	4	1	6	11	1	0	39	2	50	92	103
	55-59	3	0	9	12	0	0	24	2	30	56	68
	60-64	1	0	0	1	0	0	11	0	10	21	22
65 & Above	1	0	1	2	0	0	5	1	5	11	13	
Total	126	5	192	323	4	2	676	30	816	1,528	1,851	
Grand Total:	139	7	207	353	6	2	787	45	955	1,795	2,148	

DEFINITION

Burglary-Entry Without Force is *the unlawful entry, without force, with the intent to commit a theft or other felony. This does not apply to motor vehicles or coin boxes.*

ANALYSIS

VOLUME

The number of burglaries without forced entry committed in 2019 was 5,018. This is a reported decrease of 12 percent from 2018 and a 31 percent decrease since 2015.

The largest number of offenses occurred in the month of July and the lowest amount were committed in February.

RATE

The crime rate for this offense was 50 for every 100,000 persons. The crime rate was 57 for every 100,000 persons in 2018. This is a decrease of 12 percent.

CLEARANCES

Law enforcement agencies cleared 639 incidents by an arrest or exceptional clearance out of the 4,916 incidents reported. This calculates to a 13 percent clearance rate.

NATURE

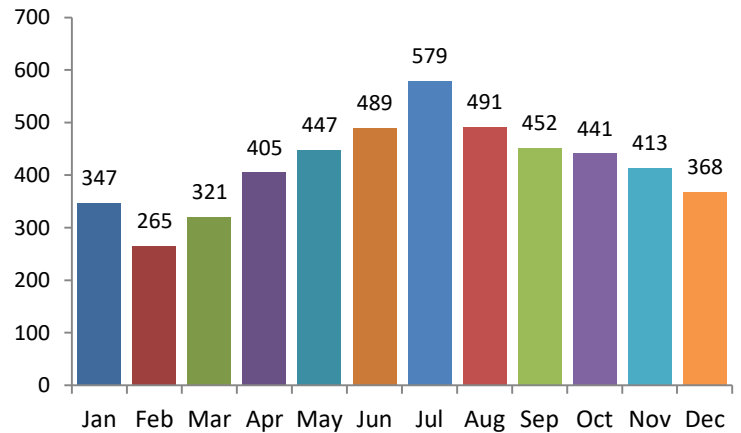
In 2019, 84 percent of these crimes occurred at a Residence/Home. Three percent of the offenses occurred in a Parking/Drop Lot/Garage location. Burglaries without forced entry occurred most often on Fridays. The lowest number occurred on Saturdays.

OFFENDERS

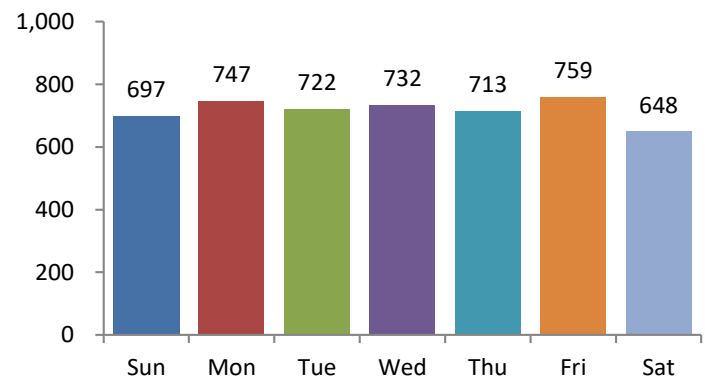
In fifty-three percent of the offenses reported to law enforcement agencies, the suspect or offender was Unknown. Among the offenses where offender information was known (2,623), Males were involved in 77 percent of these offenses and 23 percent involved Females.

Forty-four percent of the offenses were committed by White Males and 14 percent were White Females. Black/African American Males were involved in 27 percent of these offenses and Black/African American Females were involved in eight percent of these offenses.

Offenses by Month

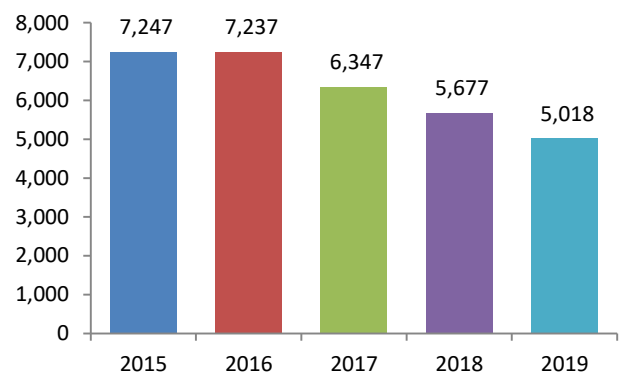


Offenses by Day



5-Year Trend

Number of Offenses



2019 Burglary- Entry Without Force Arrests



		Arrests By Age, Sex, and Race								Grand Total
		FEMALE				MALE				
		Black/African American	Unknown	White	Total	Black/African American	Unknown	White	Total	
Age Group	Black/African American	Unknown	White	Total	Black/African American	Unknown	White	Total	Grand Total	
Total Juveniles	11-12	0	0	0	0	0	0	1	1	1
	13-14	0	0	2	2	5	0	8	13	15
	15	0	0	2	2	5	0	10	15	17
	16	0	0	2	2	5	0	6	11	13
	17	0	0	2	2	8	0	6	14	16
	Total	0	0	8	8	23	0	31	54	62
	Total Adults	18	0	0	2	2	4	0	7	11
19		0	0	1	1	3	1	7	11	12
20		1	1	0	2	5	0	4	9	11
21		0	0	1	1	4	0	4	8	9
22		2	0	0	2	5	0	5	10	12
23		0	0	3	3	5	0	10	15	18
24		0	0	0	0	6	1	11	18	18
25-29		4	0	11	15	17	2	38	57	72
30-34		4	0	8	12	10	1	37	48	60
35-39		1	0	4	5	8	0	30	38	43
40-44		0	1	5	6	5	0	23	28	34
45-49		2	0	5	7	3	0	14	17	24
50-54		0	0	2	2	8	0	8	16	18
55-59		0	0	2	2	3	0	8	11	13
60-64		0	0	1	1	0	0	1	1	2
65 & Above		0	0	2	2	1	0	2	3	5
Total		14	2	47	63	87	5	209	301	364
Grand Total:	14	2	55	71	110	5	240	355	426	