

DEFINITION

Robbery is the taking or attempting to take anything of value under confrontational circumstances from the care, custody, or control of a person or persons by force, threat of force, or violence and/or by putting the victim in fear of immediate harm.

ANALYSIS

VOLUME

The number of offenses for Robbery in Michigan for 2019 was 5,284. This is a reported decrease of seven percent from 2018 and a thirty-two percent decrease from 2015.

The largest number of offenses occurred in the month of August. The lowest amount were committed in February.

RATE

The crime rate for this offense in 2019 was 53 for every 100,000 persons. The crime rate in 2018 was 57 for every 100,000 persons.

CLEARANCES

Law enforcement agencies cleared 1,237 incidents by an arrest or exceptional clearance of the 5,262 incidents reported. This is a reported 24 percent clearance rate.

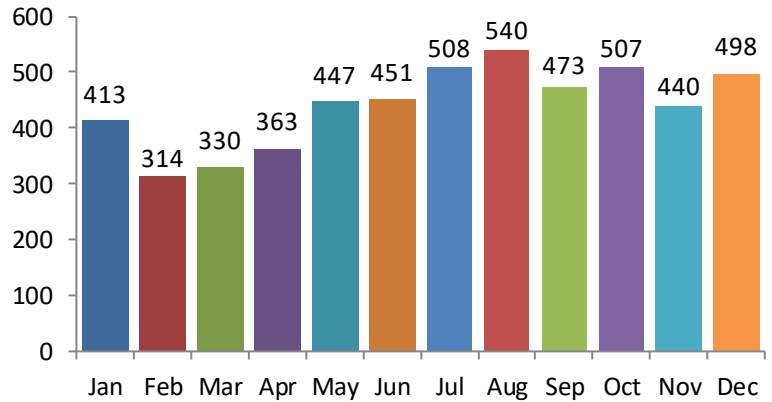
NATURE

In 2019, Robberies that occurred on a Highway/Road/Alley accounted for 37 percent of the offenses. Residence/Home accounted for 21 percent of the offenses.

The weapon most used in the commission of these Robberies was a Handgun at 33 percent, which includes Automatic Handguns. Personal Weapons (e.g., hands, fists, feet, etc.) were used in 27 percent of the offenses.

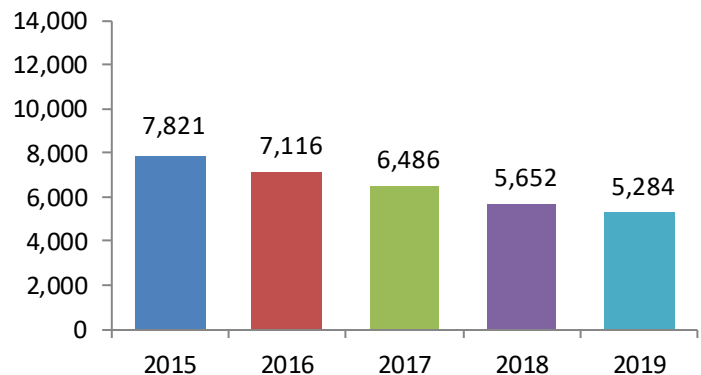
In August of 2019, the MICR Unit implemented a new offense to capture Carjackings separate from Robbery. Therefore, an accurate analysis of Carjackings cannot be provided this year.

Offenses by Month

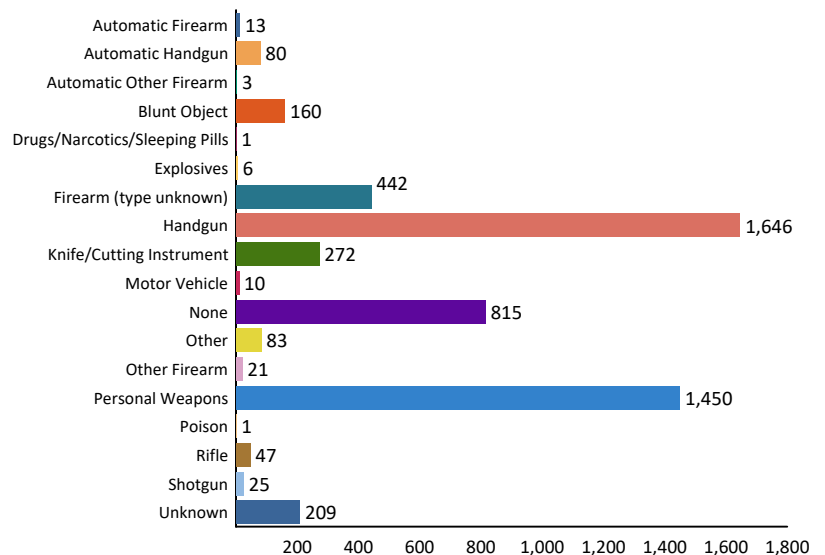


5-Year Trend

Number of Offenses



Weapons Used



2019 Robbery Arrests



Age Group		Arrests By Age, Sex, and Race									Grand Total
		FEMALE				MALE					
		Black/African American	Unknown	White	Total	Asian	Black/African American	Unknown	White	Total	
Total Juveniles	10 & Under	0	0	0	0	0	1	0	0	1	1
	13-14	0	0	0	0	0	27	0	5	32	32
	15	0	0	0	0	0	19	0	10	29	29
	16	4	0	0	4	0	38	1	9	48	52
	17	7	0	1	8	0	63	1	8	72	80
	Total	11	0	1	12	0	148	2	32	182	194
Total Adults	18	7	1	1	9	0	58	0	11	69	78
	19	8	0	1	9	1	46	2	5	54	63
	20	8	0	1	9	0	33	0	7	40	49
	21	5	0	1	6	0	29	0	11	40	46
	22	1	0	2	3	0	18	2	6	26	29
	23	6	0	1	7	0	22	1	7	30	37
	24	4	0	1	5	0	28	0	8	36	41
	25-29	16	1	14	31	0	128	1	36	165	196
	30-34	8	0	8	16	0	66	1	38	105	121
	35-39	6	1	10	17	0	43	0	23	66	83
	40-44	4	0	6	10	0	13	0	19	32	42
	45-49	2	0	6	8	0	16	2	6	24	32
	50-54	7	0	3	10	0	32	0	21	53	63
	55-59	2	0	0	2	0	22	0	7	29	31
	60-64	1	0	0	1	0	5	0	2	7	8
65 & Above	0	0	1	1	0	4	0	1	5	6	
Total	85	3	56	144	1	563	9	208	781	925	
Grand Total:		96	3	57	156	1	711	11	240	963	1,119