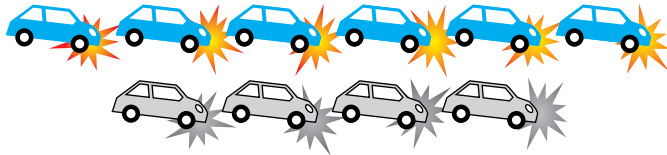


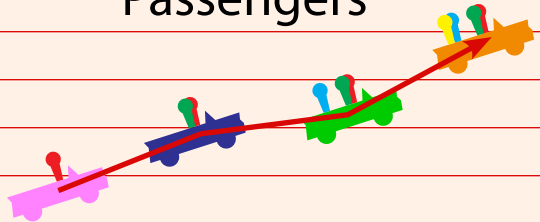
FAST FACTS

Distraction



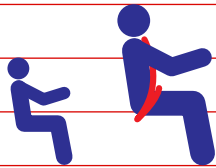
Six out of 10 teen crashes involve driver distraction.

Passengers



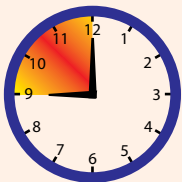
A teen driver's risk of being killed in a crash increases with each additional passenger in the vehicle.

Seat Belts



Seat belts increase the chance of surviving a crash by nearly 50 percent.

Nighttime

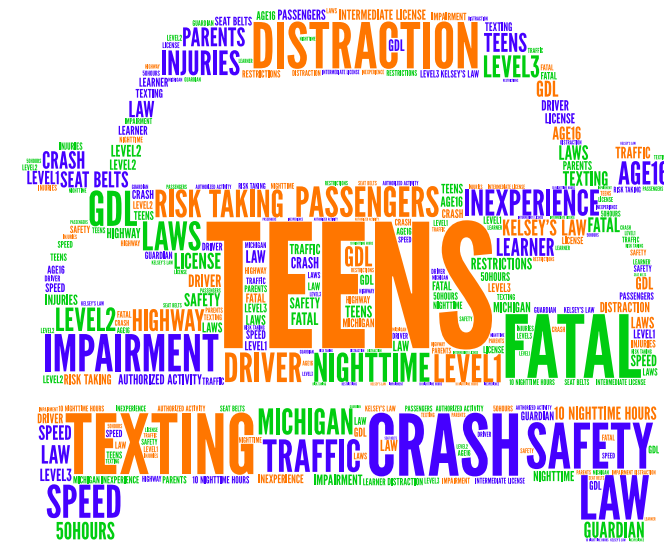


Among nighttime crashes involving teens, nearly 60 percent happen between 9 p.m. and midnight.

MICHIGAN GDL

Graduated driver licensing laws that help teen drivers stay safe

Graduated Driver Licensing (GDL) can reduce teen crash risk by as much as 50 percent.



P.O. Box 30634
Lansing, MI 48909
517-284-3332
Michigan.gov/ohsp

This material was developed through a project funded by the Michigan Office of Highway Safety Planning and the U.S. Department of Transportation.

Michigan.gov/TeenDriver

LEARNER'S LICENSE

- Always supervised by a licensed parent, legal guardian, or designated driver aged 21 or older.

- Prohibited from texting and using a handheld cell phone while driving (Kelsey's Law).
- Requires seat belts for everyone in the front seat and everyone under the age of 16 in the vehicle.

LEVEL

1



[Michigan.gov/TeenDriver](https://www.michigan.gov/TeenDriver)

INTERMEDIATE LICENSE

- Shall not operate a motor vehicle with more than one passenger younger than 21 years of age except when the additional passengers are immediate family members.
- Shall not operate a motor vehicle between 10 p.m. and 5 a.m.
- Exceptions to the passenger and nighttime restrictions include:
 - When driving to or from work or in the course of employment.
 - While driving to or from an authorized activity.
 - When accompanied by a parent or legal guardian or a licensed driver 21 years of age or older, designated by the parent or legal guardian.

- Prohibited from texting and using a handheld cell phone while driving (Kelsey's Law).
- Requires seat belts for everyone in the front seat and everyone under the age of 16 in the vehicle.
- Penalties for violating GDL restrictions:
 - A civil infraction resulting in two points on a teen's license.
 - Extension of the Level 2 license period for 12 months.
 - Driver re-examination and possible license suspension and/or additional restrictions.
- Authorized Activity:
 - A school or a school-sanctioned event or activity (public, private, or home).
 - An event or activity sponsored by a religious organization that is tax-exempt under federal law.

- A sporting event or activity, or extracurricular event or activity, that is not school-sanctioned but that is part of an official sports league or association, or an official extracurricular club, or that is paid for as a service offered by a business specializing in those events or activities, or training for those events or activities.
- A class or program of vocational instruction offered by a college, community college, nonprofit association, unit of government, or business specializing in vocational training.
- Transporting an individual in need of immediate emergency care or personal protection to a health care professional, hospital, police station, domestic violence shelter, or public safety location.

LEVEL

2

KELSEY'S LAW

All Level 1 and 2 holders, under the GDL program, are prohibited from using a cell phone while driving under Kelsey's Law except when:

- Reporting a traffic crash, medical emergency, or serious road hazard.

- Reporting a situation if the person believes his or her personal safety is in jeopardy.
- Reporting or averting the perpetration of a criminal act.
- Using a voice-operated system integrated into the vehicle.

Violations will be a civil infraction and fees associated with the original ticket up to \$240. No points will be assessed.

FULL DRIVING PRIVILEGES

- Must be aged 17 or older.
- Have Level 2 Intermediate License for at least six months.
- 12 consecutive months crash- and violation-free.

LEVEL

3