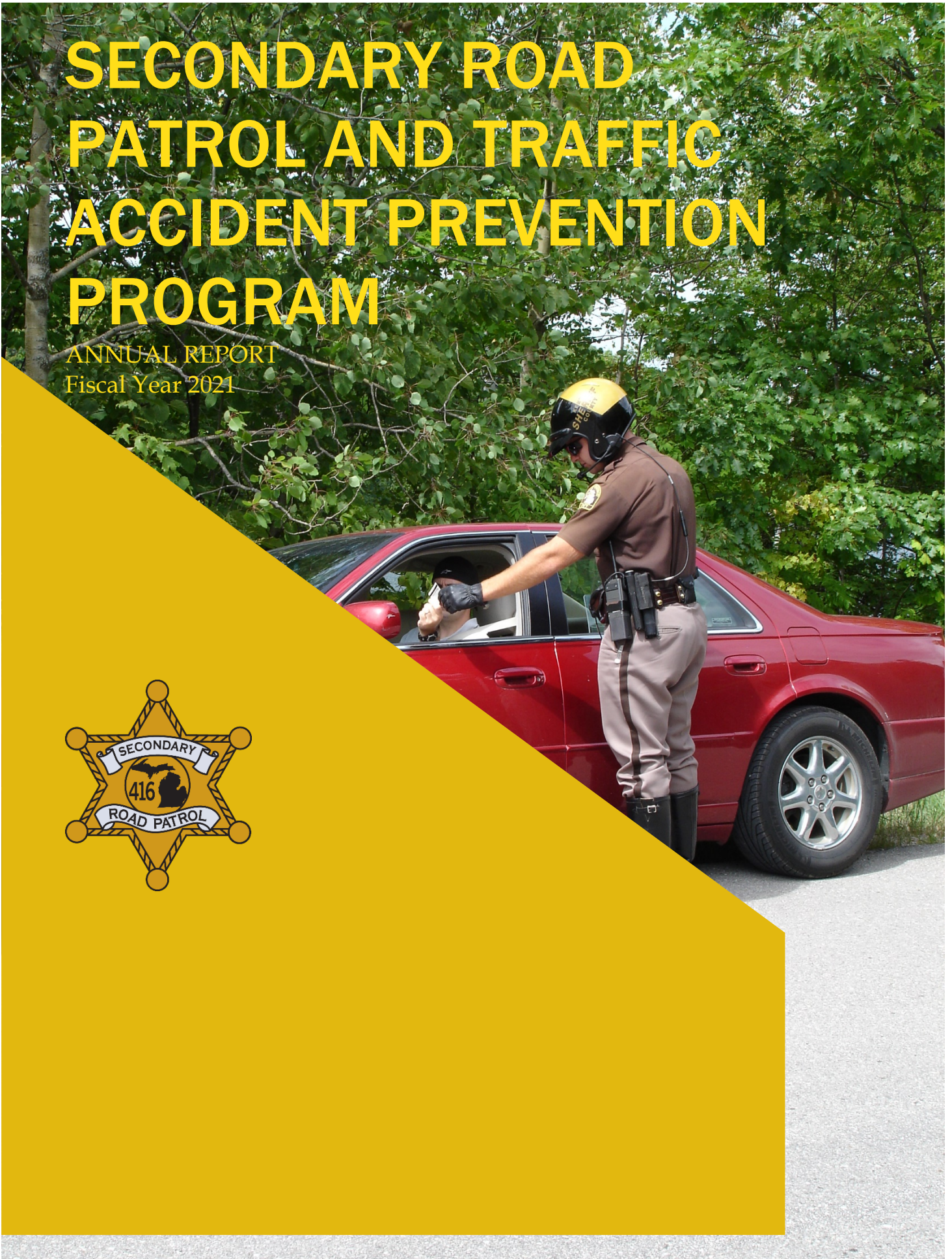


SECONDARY ROAD PATROL AND TRAFFIC ACCIDENT PREVENTION PROGRAM

ANNUAL REPORT
Fiscal Year 2021



**PUBLIC ACT 416 OF 1978,
as amended**

**MICHIGAN DEPARTMENT OF STATE POLICE
OFFICE OF HIGHWAY SAFETY PLANNING**

P.O. Box 30634
Lansing, Michigan 48909
517-284-3332

www.michigan.gov/ohsp-srp

This report was compiled by the Michigan Office of Highway Safety Planning from documents submitted by each participating county.

Contents

Fiscal Year 2021 Quick Facts.....	1
Introduction	1
Synopsis of Public Act 416 of 1978	4
Services to be Provided	5
How Funds Can be Spent	5
Allocation of Funds Under the Act	5
Maintenance of Effort	5
SRP FY 2021 Allocation	6
Sheriff Reports	8
Coordination of Law Enforcement Agencies.....	8
Law Enforcement Training.....	9
Communications Systems.....	9
Recommendations.....	9
Improving Law Enforcement Coordination	9
Improving Law Enforcement Training.....	10
Improving Law Enforcement Communication	10
Improving Services Provided.....	10
Background Information.....	11
Number of Counties	11
Definitions of Variables Used in This Report	11
Personnel and Activities	12
Services Provided.....	12
Program Funding.....	12
SRP Appropriation History	13
SRP Revenue	14
Personnel	14
Activity	16
Monitoring	16
Law Enforcement Training.....	17
Traffic Crashes.....	17
SRP Program Expenditures	17
Synopsis of Activities	19
Average Activity Levels per SRP Program Deputy in FY 2021	19
Cumulative SRP Program Figures for Participating Counties in FY2021	19

Conclusion	20
Public Act 416 of 1978.....	20
Sec. 51.76.....	20
Sec. 51.77	21
Tables, Charts, and Graphs	24
Statewide Program Budget per Expense Category	24
History of SRP Program Funds Available and Expended	24
Average (Avg) Traffic Citations Per Deputy	26
Activity Averages per SRP Deputy	26
2019 - 2020 Michigan Traffic Crash Facts.....	27
2021 SRP Summary from Semi-Annual Reports	28

Fiscal Year 2021 Quick Facts

In Fiscal Year (FY) 2021, the Secondary Road Patrol (SRP) program funded 106.6 deputies compared with 115 in FY 2020.

SRP deputies generated 56,307 vehicle stops, resulting in 730 impaired drivers being removed from Michigan's roadways, 35,547 traffic citations, 3,876 criminal arrests, and 15,773 assists to other officers. SRP deputies also responded to 12,621 criminal complaints and aided 2,301 motorists in need of assistance.

SRP deputies investigated 9,033 traffic crashes, including 6,287 on secondary roads, 2,429 on state trunk lines, and 316 in villages and cities.

SRP deputies investigated 210 fatal traffic crashes on secondary roads, 62 fatal crashes on state trunk lines, and 14 fatal crashes in villages and cities.

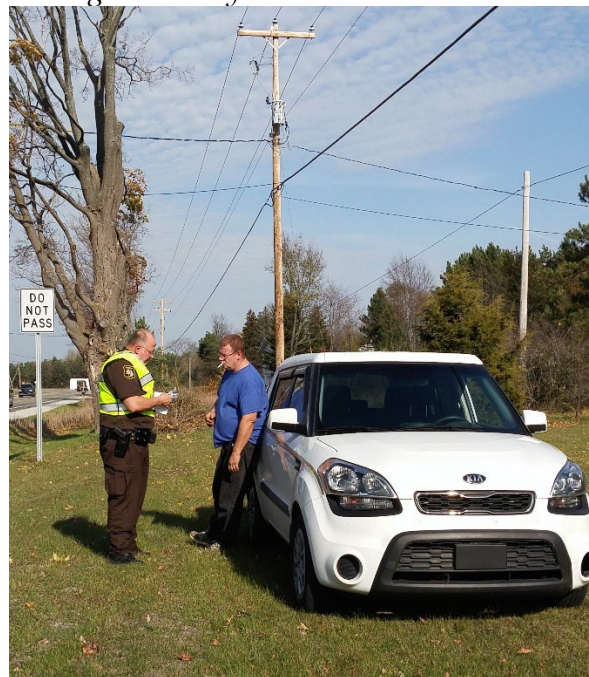
Introduction

The Secondary Road Patrol and Traffic Accident Prevention program was created by Public Act 416 of 1978. This state grant program, often referred to as the SRP or 416 program, provides Michigan county sheriffs' offices with funding to patrol county and local roads outside the limits of cities and villages. Deputies funded under the SRP program have legislated responsibilities of traffic enforcement, traffic crash prevention and investigation, criminal law enforcement, and emergency assistance. The program began on October 1, 1978, with 78 participating counties. On October 1, 1989, Executive Order 1989-4 transferred the SRP program from the Michigan Department of Management and Budget Office of Criminal Justice to the

Bay County



Muskegon County



Michigan Department of State Police (MSP) *Eaton County*
Office of Highway Safety Planning (OHSP).

Public Act 416 of 1978, as amended, required two documents, generally combined into one report, to be submitted to the Michigan Legislature:

An annual report containing data from the participating sheriffs' offices along with their recommendations on methods for improving coordination of municipal, county, and state law enforcement agencies, improving law enforcement training programs, and improving law enforcement communications systems, as well as a description of the role alcohol played in the incidence of fatal and personal injury crashes in the state. The report is due each year on May 1. OHSP is required to conduct an impact and cost effectiveness study that will review state, county, and municipal road patrol and traffic accident prevention efforts. This study is required to be submitted by April 1 of each year. However, due to statutory limitations for program administrations, the lack of pre-program baseline data, and the complexity of variables that influence traffic crashes, deaths, and injuries, the study has never been able to be completed. The one percent annually appropriated to the SRP Program for administrative, planning, and reporting purposes is insufficient to administer the SRP program for the counties, appropriately monitor use of the funding, and also conduct an impact and cost-effectiveness study on an annual basis. Therefore, this annual report only documents activity performed by deputies funded under the SRP program for the past year and provides data from previous years for comparison purposes.



Barry County





Genesee County



Synopsis of Public Act 416 of 1978

The sheriff's office is the primary agency responsible for providing certain services (see below) on the county primary roads and local roads outside the boundaries of cities and villages. The sheriff's office also provides these services on any portion of any other highway or road within the boundaries of a state or county park. For complete law, see page 20.



Services to be Provided

1. Patrolling and monitoring traffic violations.
2. Enforcing the criminal laws of this state, violations of which are observed by or brought to the attention of the sheriff's office while providing the patrolling and monitoring required by Public Act 416 of 1978.
3. Investigating accidents involving motor vehicles.
4. Providing emergency assistance to persons on or near a highway or road patrolled, as required by Public Act 416 of 1978.

The sheriff's office shall provide these services, with the exception of number 2, within a city or village if the legislative body of the local unit of government passes a resolution requesting the services.

How Funds Can be Spent

Counties are required to enter into a contractual arrangement with the OHSP to receive funds. Funds can be spent to provide the services above, as follows:

- Employing additional personnel.
- Purchasing additional equipment.
- Enforcing law in the state and county parks.
- Providing selective motor vehicle inspection programs.
- Providing traffic safety information and education programs, in addition to those provided before the effective date of Public Act 416 of 1978.

Allocation of Funds Under the Act

A county's share of the amount annually appropriated for SRP and Traffic Accident Prevention shall be the same percentage that the county received, or was eligible to receive, of the total amount allocated to all counties pursuant to Section 12 of Act No. 51 of the Public Acts of 1951, as amended, being Section 247.662 of the Michigan Compiled Laws, less the amounts distributed for snow removal and engineers, during the period of July 1, 1976, through June 30, 1977.

Maintenance of Effort

SRP program funds are mandated to supplement road patrol efforts by counties, not to supplant or replace county funding.

An agreement entered into under this section shall be void if the county reduces its expenditures or level of road patrol below that which the county was expending or providing immediately before October 1, 1978, unless the county is required to reduce

general services because of economic conditions and is not merely reducing law enforcement services. (51.77(1))

This provision is known as the Maintenance of Effort (MOE). Under MOE, counties are ineligible for SRP program funding if they reduce the level of county-funded road patrol (CFRP) deputies, unless they can prove economic hardship and are forced to reduce general services commensurate with the reduction in road patrol. Counties are required to report the number of deputies they have at the beginning of each funding year; these figures are compared with those reported for October 1, 1978. If the county has fewer county-supported deputies, it must either replace the personnel or prove economic hardship in order to receive SRP program funds. If reductions become necessary during the year, the county is required to report this to the OHSP. Then, the OHSP will determine if the reduction meets the requirements of Public Act 416 of 1978.

On September 24, 2020, the Michigan Legislature adopted House Concurrent Resolution No. 30 exempting all Michigan counties from the MOE requirement for FY 2021 due to economic hardship.

SRP FY 2021 Allocation

2021 Total State Allocation \$7,780,005

County	Allocation Percentage	MOE Requirement	County Allocation
Alcona	0.393	4.0	\$30,575
Alger	0.322	0	\$25,052
Allegan	1.216	18	\$94,605
Alpena	0.578	1	\$44,968
Antrim	0.465	7	\$36,177
Arenac	0.396	3	\$30,809
Baraga	0.310	0	\$24,118
Barry	0.692	11	\$53,838
Bay	1.499	23	\$116,622
Benzie	0.353	4	\$27,463
Berrien	2.075	24	\$161,435
Branch	0.747	13	\$58,117
Calhoun	1.762	17	\$137,084
Cass	0.766	14	\$59,595
Charlevoix	0.442	7	\$34,388
Cheboygan	0.563	2	\$43,801
Chippewa	0.706	6	\$54,927
Clare	0.531	4	\$41,312
Clinton	0.857	9	\$66,675
Crawford	0.369	3	\$28,708
Delta	0.696	5	\$54,149

County	Allocation Percentage	MOE Requirement	SECONDARY ROAD PATROL
			County Allocation
Dickinson	0.491	3	\$38,200
Eaton	1.090	17	\$84,802
Emmet	0.514	10	\$39,989
Genesee	4.380	21	\$340,764
Gladwin	0.467	5	\$36,333
Gogebic	0.415	6	\$32,287
Grand Traverse	0.836	19	\$65,041
Gratiot	0.782	7	\$60,840
Hillsdale	0.758	9	\$58,972
Houghton	0.570	4	\$44,346
Huron	0.838	13	\$65,196
Ingham	2.310	12	\$179,718
Ionia	0.749	9	\$58,272
Iosco	0.626	10.5	\$48,703
Iron	0.389	1	\$30,264
Isabella	0.782	7	\$60,840
Jackson	1.926	24	\$149,843
Kalamazoo	2.010	27	\$156,378
Kalkaska	0.435	4	\$33,843
Kent	4.123	77	\$320,769
Keweenaw	0.188	2	\$14,626
Lake	0.422	4	\$32,832
Lapeer	0.925	7	\$71,965
Leelanau	0.389	7	\$30,264
Lenawee	1.221	24	\$94,994
Livingston	1.032	15	\$80,290
Luce	0.279	0	\$21,706
Mackinac	0.366	5	\$28,475
Macomb	5.173	68	\$402,459
Manistee	0.569	5	\$44,268
Marquette	0.906	11	\$70,487
Mason	0.555	10	\$43,179
Mecosta	0.597	2.5	\$46,447
Menominee	0.650	2	\$50,570
Midland	0.833	19	\$64,807
Missaukee	0.415	1	\$32,287
Monroe	1.733	36	\$134,827
Montcalm	0.836	13	\$65,041
Montmorency	0.352	6	\$27,386
Muskegon	1.590	23	\$123,702
Nwaygo	0.774	12	\$60,217
Oakland	8.459	48	\$658,110
Oceana	0.562	8	\$43,724
Ogemaw	0.461	4	\$35,866

County	Allocation Percentage	MOE Requirement	SECONDARY ROAD PATROL
			County Allocation
Ontonagon	0.356	6	\$27,697
Osceola	0.486	0	\$37,811
Oscoda	0.360	4	\$28,008
Otsego	0.448	9	\$34,854
Ottawa	1.907	23	\$148,365
Presque Isle	0.427	5	\$33,221
Roscommon	0.455	11	\$35,399
Saginaw	2.472	25	\$192,322
St. Clair	1.629	18	\$126,736
St. Joseph	0.801	10	\$62,318
Sanilac	0.899	10	\$69,942
Schoolcraft	0.301	0	\$23,418
Shiawassee	0.917	15	\$71,343
Tuscola	0.967	11	\$75,233
Van Buren	0.901	0	\$70,098
Washtenaw	2.196	34	\$170,849
Wayne	14.407	60	\$1,120,865
Wexford	0.555	9	\$43,179
TOTALS	100.00		\$7,780,005

Sheriff Reports

SRP program data is derived from reports submitted by participating sheriffs' offices as part of their reporting requirements. The data is collected on a state fiscal-year basis, October 1 through September 30, of each year.

Coordination of Law Enforcement Agencies

Law enforcement coordination methods range from formal written agreements identifying primary responsibility for specific functions and areas of service to informal verbal agreements. The informal agreements usually establish operational procedures for requesting back-up support. Many sheriffs' offices have mutual aid agreements identifying the interagency resources available in the event of a major policing problem within the county. Resources may be in the form of either additional personnel or technical expertise not normally provided by smaller agencies.

The law requires each sheriff, the director of the MSP, and the director of the OHSP to meet and develop a law enforcement plan for the unincorporated areas of each participating county. The law enforcement plans are updated at least every four years, after a sheriffs' election year, and more often if changes occur. The plans were last updated in 2021.

In 2021, 78 sheriffs indicated involvement in county and area law enforcement associations or councils for purposes of coordinating criminal justice intelligence data, traffic problems of mutual concern, and investigative deployment in conjunction with undercover operations.

Eighty-one sheriffs reported they provide or participate in a centralized communications system, which is another form of coordination between law enforcement agencies and other public safety and emergency service providers.

The Michigan Sheriffs' Association (MSA) represents the interests of all sheriffs' offices and coordinates issues of statewide concern, based on input from its members.

Law Enforcement Training

The most important types of training attended by deputies during 2021 were:

- Firearms/weapons
- Legal updates
- Alcohol/drugged driving enforcement
- Self-defense/restraint

Training is provided through in-service programs within departments and by regional law enforcement training academies and consortiums. In 2021, 100,728 hours of instruction were provided to 3,017 deputies. Eighty sheriffs' offices provided in-service training sessions to certified road patrol officers.

Communications Systems

Most sheriffs indicate basic levels of communication are available for emergency response. All county agencies have access to the Law Enforcement Information Network, generally known as LEIN.

Recommendations

Improving Law Enforcement Coordination

Cooperation between state, county, and municipal agencies is reducing duplication and ensuring the maximum use of available resources. Some of the recommendations provided by participating sheriffs include:

- Communication and teamwork with other law enforcement agencies to streamline the enforcement function and reduce duplication of efforts.
- Additional officers to maintain a high level of police presence which helps increase public safety and protection to our citizens.

- Consolidate Special Response Teams, Accident Reconstruction, training, K-9 Teams, and other specialized units to share among county, state, and local departments.
- More joint training sessions.

Improving Law Enforcement Training

Participating sheriffs identified additional training is needed in the areas of:

- Beyond the stop/interdiction
- Report writing
- Commercial motor vehicles
- De-escalation

Improving Law Enforcement Communication

Most participating sheriffs indicated a need for continued development of communication systems. Deputies in 32 counties reported being unable to communicate with their radio dispatcher from their patrol vehicle, with 1-99 percent of the county area not reliably covered. Deputies in 30 counties reported being unable to communicate when using portable radios, with 2-64 percent of the county not reliably covered. This results in a potentially hazardous environment for both law enforcement and the public. In some cases, the communication equipment purchased for the existing dispatch facilities and field units is outdated, in need of continual repair, or completely inoperable. Participating sheriffs requested the following improvements:

- Additional mobile equipment
- Additional portable equipment
- Additional system-wide equipment
- Additional radios

Improving Services Provided

Numerous agencies advise the following enhancements would improve services provided under Public Act 416 of 1978:

- Increase monitoring of traffic flow to lessen the frequency of crashes and make an overall safer community.
- An increase in program funding. It has become very difficult to provide the critical 416-secondary road patrol services with the decrease in funds, as well as the increase in fuel and maintenance.
- Coordinate with local schools about patrols and enforcement of school bus violations.

- Manage and help 416 deputies to promote safe travel and limit hazardous violations to bring the fatal crashes down.

Background Information

Number of Counties

This report includes MOE and crash data from all 83 Michigan counties. The activity data for FY 2021 also includes all 83 of Michigan's counties.

Definitions of Variables Used in This Report

Accident Investigation – Response to reported crashes, initial investigation, and evidence collection.

Accident (or crash) – Motor vehicle crash reported to the MSP by state, county, or municipal law enforcement. (With few exceptions, the OHSP prefers the term *crash* because it does not infer or assign responsibility for the act. The exception is incidents determined to be acts of intent. For example, if a fugitive intentionally crashes his or her car into a patrol car in an effort to elude police, the crash is deemed intentional and is not reported to the state as a traffic crash.)

Alcohol-Related Crashes – Traffic crashes where one or more of the drivers involved had been drinking.

Arrests – Criminal arrests, either felony or misdemeanor, including appearance tickets.

Citations – All violations of either state law or local ordinance, both moving and non-moving violations.

Crime – Felony and misdemeanor crimes reported to the MSP Uniform Crime Reporting System by state, county, and municipal agencies as substantiated crimes.

Criminal Complaint Responses – The response to any situation where a citizen reports a crime (felony or misdemeanor) was committed or is in progress.

Law Enforcement Assist – Assisting a law enforcement officer of a different department (federal, state, or municipal) or of the same department. (This includes Michigan Department of Natural Resources officer, Liquor Control Commission personnel, etc.)

Motorist Assist – Assisting citizens who need help. (This is primarily where an automobile becomes inoperative and the citizen is stranded.)

Personnel and Activities

Activity data is derived from semi-annual and annual program reports submitted to the OHSP by participating sheriffs' offices. For 2021, the activity was compiled according to the state fiscal year, October 1, 2020 through September 30, 2021.

Services Provided

The main focus of the SRP program is traffic enforcement and crash investigation on secondary roads. In addition, SRP program deputies provide assistance to persons on secondary roads, enforced violations of the criminal laws that are observed during patrol, provide vehicle inspection programs, and provide traffic safety education programs.

Program Funding

In FY 1992, the SRP program began a transition from 100 percent General Fund (GF) support to partial GF monies along with surcharges on traffic citations (Restricted Funds). Public Act 163 of 1991 mandated \$5 be assessed on most moving violations to be deposited into a Secondary Road Patrol and Training Fund. The funding is used for Secondary Road Patrol and Traffic Accident Prevention grants and training through the Michigan Commission on Law Enforcement Standards. In FY 2002, this surcharge was increased to \$10 while the GF portion was decreased. The GF appropriation was eliminated in 2003. However, the Legislature made modest supplemental appropriations within 2012, 2014, 2019, 2020, and 2021.

The OHSP distributes all available funds under Public Act 416 of 1978, while maintaining the fiscal integrity of the SRP program. Each July or August, the OHSP estimates the funding amount for the next FY, applies a distribution formula, and notifies each county of its projected allocation. The estimate is based on current and past revenue collections and projected changes in the economy or other factors and includes any projected carry-forward funds from the current FY. One percent of the appropriation is allocated to the OHSP for administration of the SRP program.

A mid-year adjustment of the allocation to the counties in the current FY may be made if the revenue collection or the carry-forward funds significantly exceed or fall short of projections. Unused funds carry over into the next FY.

If a county does not qualify under Public Act 416 of 1978 and does not receive SRP program funding, the allocated funds will remain available through the FY in case the county comes into compliance. Unused monies from all counties are added to the next FY's total budget. Unused monies do not accumulate for a county beyond a fiscal year.

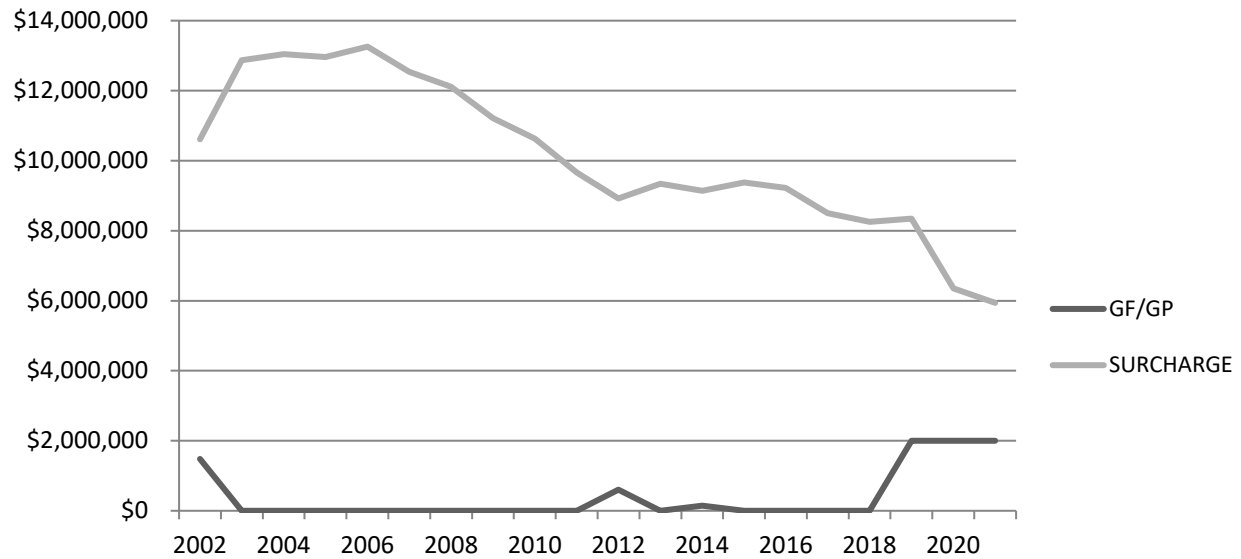
In FY 2021, an allocation of \$7.78* million was made available to all Michigan counties.

SRP Appropriation History

Fiscal Year	General Fund Appropriation	Restricted Fund Appropriation	Total Appropriation
1979	\$8,700,000		\$8,700,000
1980	\$8,700,000		\$8,700,000
1981	\$6,400,000		\$6,400,000
1982	\$6,500,000		\$6,500,000
1983	\$6,500,000		\$6,500,000
1984	\$6,500,000		\$6,500,000
1985	\$6,700,000		\$6,700,000
1986	\$7,100,000		\$7,100,000
1987	\$7,300,000		\$7,300,000
1988	\$7,480,000		\$7,480,000
1989	\$7,423,900		\$7,423,900
1990	\$7,239,500		\$7,239,500
1991	\$7,239,500		\$7,239,500
1992	\$3,041,500	\$3,744,500	\$6,786,000
1993	\$1,544,000	\$5,244,500	\$6,788,500
1994	\$1,544,600	\$5,244,500	\$6,789,100
1995	\$2,546,400	\$4,644,500	\$7,190,900
1996	\$3,048,200	\$5,944,100	\$8,992,300
1997	\$3,048,200	\$6,335,200	\$9,383,400
1998	\$3,137,800	\$5,701,300	\$8,839,100
1999	\$4,532,600	\$6,069,000	\$10,601,600
2000	\$5,785,400	\$6,152,300	\$11,937,700
2001	\$6,327,100	\$6,152,300	\$12,479,400
2002	\$1,603,800	\$10,902,300	\$12,506,100
2003		\$12,506,600	\$12,506,600
2004		\$14,006,600	\$14,006,600
2005		\$14,012,100	\$14,012,100
2006		\$14,020,100	\$14,020,100
2007		\$14,019,500	\$14,019,500
2008		\$14,029,900	\$14,029,900
2009		\$14,030,100	\$14,030,100
2010		\$14,034,500	\$14,034,500
2011		\$14,037,000	\$14,037,000
2012	\$600,000	\$14,041,600	\$14,641,600
2013		\$14,060,200	\$14,060,200
2014	\$150,000	\$11,064,200	\$11,214,200
2015		\$11,066,100	\$11,066,100
2016		\$11,065,700	\$11,065,700
2017		\$11,068,000	\$11,068,000
2018		\$11,069,300	\$11,069,300
2019	\$2,000,000	\$11,072,200	\$13,072,200
2020	\$2,000,000	\$11,074,300	\$13,074,300
2021	\$4,700,000	\$11,074,300	\$15,774,300

Note: Beginning in December of 2002, the \$5 surcharge on moving violations, which funds the restricted portion of the appropriation, was doubled to \$10. The general fund appropriation was decreased for 2002 and was eliminated in 2003. Supplemental appropriations were approved in 2012, 2014, 2019, 2020, and 2021.

SRP Revenue



Personnel

Number of Road Patrol Deputies in FY 2021-----2,493.1

SRP Funded-----106.6

County Funded-----2,386.5

The table below shows the number of SRP program deputies employed each fiscal year compared with CFRP deputies.

Fiscal Year	Program Year	SRP Deputies	County-Funded Deputies
1979	1 st	287	1,123
1980	2 nd	291.3	N/A
1981	3 rd	215.4	N/A
1982	4 th	194.2	1,296
1983	5 th	188.7	1,301.1
1984	6 th	176.7	1,310.2
1985	7 th	174.7	1,294
1986	8 th	171.1	1,281.3

Fiscal Year	Program Year	SRP Deputies	SECONDARY ROAD PATROL
			County-Funded Deputies
1987	9 th	170.1	1,301.9
1988	10 th	167	1,316.5
1989	11 th	173.7	1,304.5
1990	12 th	173.4	1,286.4
1991	13 th	159.5	1,302.5
1992	14 th	155.5	1,363.2
1993	15 th	150.5	1,695
1994	16 th	150	1,686
1995	17 th	150.1	1,769.9
1996	18 th	162.5	1,836.1
1997	19 th	164.7	1,908.2
1998	20 th	167.6	2,036.3
1999	21 st	175	2,102.4
2000	22 nd	191	2,249.3
2001	23 rd	192	2,325.7
2002	24 th	192.7	2,367.5
2003	25 th	183	2,331.1
2004	26 th	181.8	2,358.8
2005	27 th	178.4	2,433.7
2006	28 th	175.5	2,433.5
2007	29 th	174.9	2,070
2008	30 th	170.5	2,227.3
2009	31 st	167.2	2,134
2010	32 nd	160.4	2,057.9
2011	33 rd	155	1,970.5
2012	34 th	144.8	2,112.9
2013	35 th	134.9	2,136.9
2014	36 th	133.6	2,149
2015	37 th	133.5	2,118.4
2016	38 th	125.6	2,184.2
2017	39 th	121.3	2,147.5
2018	40 th	119.1	2,327.6
2019	41 st	115.4	2,364.2
2020	42 nd	115	2,307.4
2021	43 rd	106.6	2,386.5

Beginning in 2006, county-funded road patrol includes deputies funded with county funds, local government contracts, grants, or any other non-SRP program funding sources.

Activity

SRP program deputies may patrol, monitor for traffic law violations, and investigate accidents on county primary roads and county local roads. A deputy observing a criminal law violation while patrolling may make an arrest. Deputies may also take a complaint in their patrol area if it is observed or brought to the deputy's attention while patrolling secondary roads. In addition, deputies aid motorists, serve as community traffic safety instructors, and patrol in county parks.

The activity data in the charts starting on page 28 is based on program reports submitted by each participating sheriff's office for FY 2021. The level of traffic enforcement activity, a primary focus for the SRP program, continued to surpass that of the county-funded road patrol deputies.

Monitoring

The OHSP's administrative responsibilities include monitoring the compliance of sheriffs' offices participating in the SRP program. Counties are selected each year for a monitoring review based on length of time since the previous monitoring review was conducted and the results of the previous monitoring review. In addition, a few counties are randomly chosen. The monitoring reviews are performed with the goal of working with the county to improve the SRP program, not to be punitive.

Compliance monitoring may take place through either random sampling or a monitoring review. These may be performed during an on-site visit to the sheriff's office or through an in-office desk review. An on-site visit to the county consists of an OHSP representative meeting with the county personnel who oversee the SRP program and financial functions. In many cases, the OHSP representative will also meet with the sheriff.

During monitoring, up to three primary areas may be examined: maintenance of effort, financial activities, and program compliance. To accomplish this, the OHSP representative may review the previous year's Officer Daily logs for all SRP deputies, reconcile expenditures reported during the program year, review the county's accounting procedures, and review the duty roster or schedule for MOE compliance.

As a result of monitoring, some counties may be asked to make certain changes in the way they conduct or administer their SRP program. These requests involve program and financial changes, which the OHSP later verifies to ensure the adjustments were made by the county.

The results of monitoring show the intent of most participating sheriffs' offices is to operate an SRP program to fully satisfy the requirements of Public Act 416 of 1978. The majority of participating sheriffs' offices satisfy the SRP program requirements and SRP

deputies are performing traffic-related duties on secondary roads the majority of the time.

In FY 2021, 83 counties' financial activities were monitored through in-office desk reviews, 38 counties received in-office desk reviews of various areas, and three counties received on-site monitoring visits.

Law Enforcement Training

Training enables law enforcement officers to address traffic safety issues. It is important for law enforcement officers to stay current with techniques that enhance their effectiveness, as well as protect their safety. The information can increase the knowledge and skills of officers who use traffic enforcement as a means to reduce crime, traffic fatalities, and injuries.

Traffic Crashes

At the time of this report, complete crash data was available through December 31, 2020.

The 2020 fatality rate of 1.25 deaths per 100 million miles of travel is an increase from the 2019 fatality rate of 0.96 and is higher than the 10-year average of 1.01 (2011-2020). There were 1,083 people killed and 60,986 people injured in 245,432 reported motor vehicle traffic crashes in Michigan during 2020. Compared with the 2019 experience, the number of motor vehicle traffic crash deaths increased 9.9 percent, people injured decreased 18.6 percent, and total reported crashes decreased 21.9 percent.

The number of crashes varies greatly by county in Michigan due to the state's geography and demographics. Southeastern Michigan is densely populated, while the rest of the state is predominately rural, particularly in the Upper Peninsula.

There were 245,432 reported crashes, of which 1,010 were fatal, 44,417 were personal injury, and 200,005 were property damage only crashes. Of all fatal crashes, 31.2 percent occurred at intersections. Of all fatal crashes, 30.0 percent involved at least one drinking operator, bicyclist, or pedestrian, 17.0 percent involved drinking but no drugs, 11.8 percent involved drugs but no drinking, and 13.0 percent involved both drinking and drugs.

SRP Program Expenditures

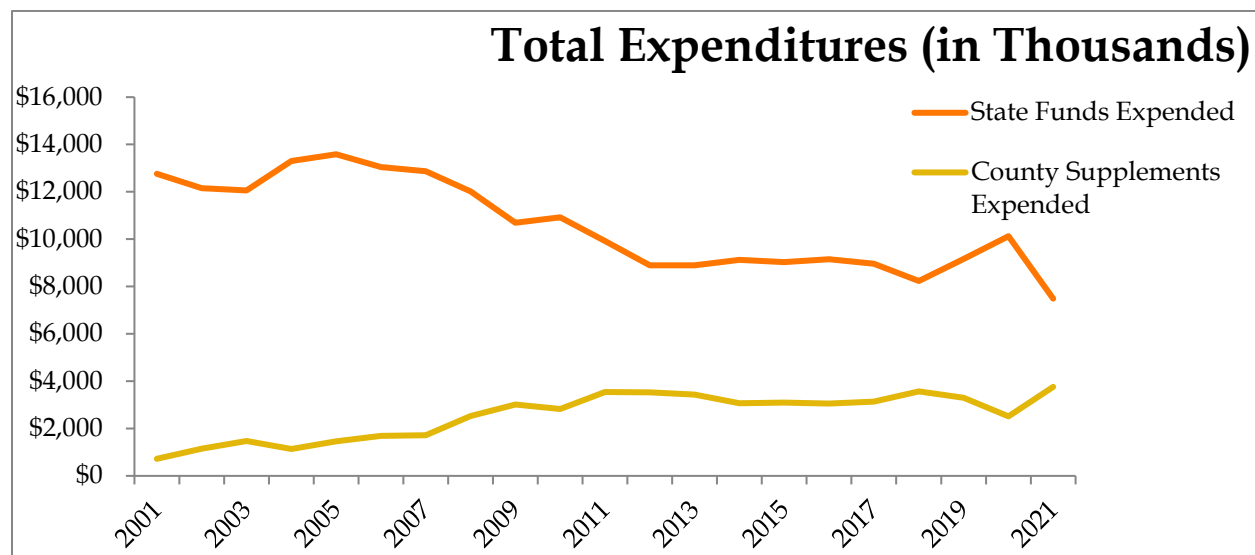
Counties develop budgets for the SRP program during August and provide the OHSP a best estimate of how SRP program funds will be utilized. Each county may develop a budget according to its own needs. Some counties include only salaries and wages, while others allocate funding for all SRP program expenses. In addition, some counties

supplement the SRP program, while others choose to utilize only the available state funds.

In FY 2021, the total reported program expenditures, including SRP state program funds and reported contributions of county funds, was \$11,247,178.36. This supported the full-time equivalent of 106.6 SRP deputies and related expenses, including personnel costs, salaries, equipment, vehicle maintenance, uniform allowances, and travel, equating to a total cost per deputy of \$105,508.24.

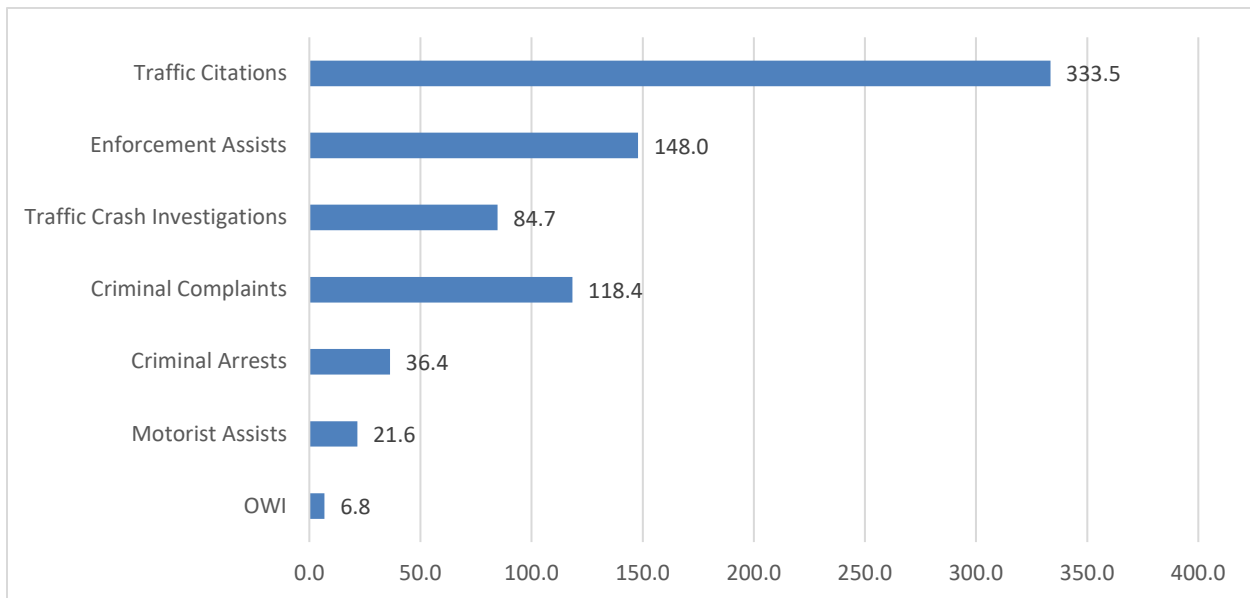
The breakdown between budget categories can fluctuate greatly from year-to-year and should not be used for multi-year comparisons. For example, a county may use a large percentage of its allocation for SRP program personnel costs one year, while choosing to purchase more equipment, such as a new vehicle, speed-measuring devices, or accident-investigation equipment, the next year.

The amount of county supplemental funds, which is included in the total reported program expenditures, can also fluctuate widely from year-to-year. Some counties choose to report only personnel and a few related expenses while absorbing the rest of the cost of the SRP program into the overall county budget, without reporting it to the OHSP. As a result, the county supplement should only be used as a general indicator of the degree of additional financial support that is provided by the counties for the SRP program and should not be used for year-to-year comparisons.



Synopsis of Activities

Average Activity Levels per SRP Program Deputy in FY 2021



Cumulative SRP Program Figures for Participating Counties in FY 2021

Miles of Patrol	2,228,960
Traffic Stops	56,307
Verbal Warnings	34,897
Traffic Citations	35,547
Traffic Crash Investigations	9,033
Operating While Intoxicated (OWI) Arrests Involving Alcohol	599
OWI Arrests Involving Drugs	130
Criminal Reports	12,621
Criminal Arrests	3,876
Motorist Assists	2,301
Law Enforcement Assists to Their Own Agency	10,351
Law Enforcement Assists to Other Agencies	5,422
Calls for Assistance in County Parks	82
Citations in County Parks	61
Non-Traffic Arrests in County Parks	28
Community Safety Training Sessions	247
Citizens Instructed	4,455

Conclusion

Section 51.77(9) of P.A. 416 requires the OHSP to conduct an “annual impact and cost effectiveness study of state, county, and municipal road patrol and accident prevention efforts” from the one percent annually appropriated to the SRP program for administrative, planning, and reporting purposes. This amount is insufficient to administer the SRP program for the counties, appropriately monitor use of the funding, and also conduct an impact and cost effectiveness study on an annual basis. Therefore, this annual report only documents activity performed by deputies funded under the SRP program for the past year and provides data from previous years for comparison purposes. High visibility enforcement efforts, like the SRP program, are a recognized best practice for having a positive impact on driver behavior and enhancing efforts to reduce traffic crashes, fatalities, and injuries.

Public Act 416 of 1978

Executive Order 1989-4 (October 1, 1989) transferred administration of the SRP program from the Department of Management and Budget, Office of Criminal Justice to the Department of State Police, Office of Highway Safety Planning. References to “Office of Criminal Justice” may, therefore, be replaced with “Office of Highway Safety Planning”.

Sec. 51.76

- (1) As used in this section, “county primary roads”, “county local roads”, and “state trunk line highways” mean the same as those terms are defined in Act No. 51 of the Public Acts of 1951, as amended, being sections 247.651 to 247.673 of the Michigan Compiled Laws. However, state trunk line highways does not include freeways as defined in section 18a of Act No. 300 of the Public Acts of 1949, being section 257.18a of the Michigan Compiled Laws.
- (2) Each sheriff’s department shall provide the following services within the county in which it is established and shall be the law enforcement agency primarily responsible for providing the following services on county primary roads and county local roads within that county, except for those portions of the county primary roads and county local roads within the boundaries of a city or village; and on those portions of any other highway or road within the boundaries of a county park within the county.
 - (a) Patrolling and monitoring traffic violations.
 - (b) Enforcing the criminal laws of this state, violations of which are observed by or brought to the attention of the sheriff’s departments while providing the patrolling and monitoring required by this subsection.

- (c) Investigating accidents involving motor vehicles.
 - (d) Providing emergency assistance to persons on or near a highway or road patrolled and monitored as required by this subsection.
- (3) Upon request, by resolution, of the legislative body of a city or village, the sheriff's department of the county in which the city or village is located shall provide the services described in subsection (2)(a), (c), and (d) on those portions of county primary roads and county local roads and state trunk line highways within the boundaries of the city or village, which are designated by the city or village in the resolution. Upon request, by resolution, of the legislative body of a city or village, the sheriff's department of the county in which the city or village is located shall provide a vehicle inspection program on those portions of the county primary roads and county local roads within the boundaries of the city or village, which are designated by the legislative body of the city or village in the resolution. A resolution adopted by a city or village under this subsection shall not take effect unless the resolution is approved by the county board of commissioners of the county in which the city or village is located. A resolution of the city or village which is neither approved or disapproved by the county board of commissioners shall be considered approved by the county board of commissioners. A resolution adopted by a city or village to request services under this subsection shall be void if the city or village reduces the number of sworn law enforcement officers employed by the city or village at any time within the 36 months immediately preceding the adoption of the resolution. A concurrent resolution adopted by a majority vote of the Senate and the House of Representatives which states that the city or village is required to reduce general services because of economic conditions and is not reducing law enforcement services shall be presumptive that the city or village has not violated the strictures of this subsection.
- (4) This section shall not be construed to decrease the statutory or common law powers and duties of the law enforcement agencies of this state or of a county, city, village, or township of this state.

Sec. 51.77

- (1) Before a county may obtain its grant from the amount annually appropriated for secondary road patrol and traffic accident prevention to implement section 76, the county shall enter into an agreement for the secondary road patrol and traffic accident prevention services with the office of criminal justice. A county applying for a grant for secondary road patrol and traffic accident prevention shall provide information relative to the services to be provided under section 76 by the sheriff's department of the county, which information shall be submitted on forms provided by the office of criminal justice. By April 1 of each year following a year for which the county received an allocation, a county which receives a grant for secondary road patrol and traffic accident prevention shall submit a report to the office of

criminal justice on a form provided by the office of criminal justice. The report shall contain the information described in subsection (6). An agreement entered into under this section shall be void if the county reduces its expenditures or level of road patrol below that which the county was expending or providing immediately before October 1, 1978, unless the county is required to reduce general services because of economic conditions and is not merely reducing law enforcement services.

- (2) A grant received by a county for secondary road patrol and traffic accident prevention shall be expended only for the purposes described in section 76 pursuant to the recommendations of the sheriff of that county, and which are approved by the county board of commissioners. The recommendations shall be relative to the following matters:
 - (a) Employing additional personnel to provide the services described in section 76(2) and (3).
 - (b) Purchasing additional equipment for providing the services described in section 76(2) and (3) and operating and maintaining that equipment.
 - (c) Enforcing laws in state parks and county parks within the county.
 - (d) Providing selective motor vehicle inspection programs.
 - (e) Providing traffic safety information and education programs in addition to those programs provided before September 28, 1978.
- (3) The sheriff's department of a county is required to provide the expanded services described in section 76 only to the extent that state funds are provided.
- (4) For the fiscal years beginning October 1, 1980, and October 1, 1981, a county's share of the amount annually appropriated for secondary road patrol and traffic accident prevention shall be the same percentage that the county received, or was eligible to receive, of the total amount allocated to all counties pursuant to section 12 of Act No. 51 of the Public Acts of 1951, as amended, being section 247.662 of the Michigan Compiled Laws, less the amounts distributed for snow removal and engineers, during the period of July 1, 1976, through June 30, 1977. County primary roads and county local roads within the boundaries of a city or village shall not be used in determining the percentage under this section unless the sheriff's department of the county is providing the services described in section 76(2) and (3) within the city or village pursuant to an agreement between the county and the city or village adopted after October 1, 1978. The agreement shall not be reimbursable under the formula described in this subsection unless the city or village is required to reduce general services because of economic conditions and is not merely reducing law enforcement services.

- (5) From the amount annually appropriated for secondary road patrol and traffic accident prevention, the office of criminal justice may be allocated up to 1% for administrative, planning, and reporting purposes.
- (6) The annual report required under subsection (1) shall include the following:
 - (a) A description of the services provided by the sheriff's department of the county under section 76, other than the services provided in a county park.
 - (b) A description of the services provided by the sheriff's department of the county under section 76 in county parks in the county.
 - (c) A copy of each resolution by a city or village of the county which represents the sheriff's department of the county to provide the services described in section 76.
 - (d) A copy of each contract between a county and a township of the county in which township the sheriff's department is providing a law enforcement service.
 - (e) The recommendations of the sheriff's department of the county on methods of improving the services provided under section 76; improving the training programs of law enforcement officers; and improving the communications system of the sheriff department.
 - (f) The total number of sworn officers in the sheriff's department.
 - (g) The number of sworn officers in the sheriff's department assigned to road safety programs.
 - (h) The accident and fatality data for incorporated and unincorporated areas of the county during the receding calendar year.
 - (i) The crime statistics for the incorporated and unincorporated areas of the county during the preceding calendar year.
 - (j) The law enforcement plan developed under subsection (7).
 - (k) A description of the role alcohol played in the incidence of personal injury traffic accidents and traffic fatalities in the county.
 - (l) Other information required by the department of management and budget.
- (7) The sheriff of each county, the director of the department of state police, and the director of the office of criminal justice or their authorized representatives shall meet and develop a law enforcement plan for the unincorporated areas of the county. The law enforcement plan shall be reviewed and updated periodically.

- (8) Before May 1 of each year, the office of criminal justice shall submit a report to the legislature. The report shall contain the following:
- (a) A copy of each initial report filed before April 1 of that year and a copy of each annual report filed before April 1 of that year under subsection (6).
 - (b) The recommendations of the office of criminal justice on methods of improving the coordination of the law enforcement agencies of this state and the counties, cities, villages, and townships of this state; improving the training programs for law enforcement officers; and improving the communications systems of those agencies.
 - (c) A description of the role alcohol played in the incidences of personal injury traffic accidents and traffic fatalities in this state.
- (9) From the 1% allocated to the office of criminal justice for administration, planning, and reporting, the office of criminal justice shall conduct an impact and cost effectiveness study which will review state, county, and local road patrol and traffic accident prevention efforts. This study shall be conducted in cooperation with the Michigan sheriffs' association, the Michigan association of chiefs of police, and the department of state police. Annual reports on results of the study shall be submitted to the senate and house appropriations committees by April 1 of each year.

Tables, Charts, and Graphs

Statewide Program Budget per Expense Category

Expense Category	Budget	% of Total Budget
Personnel	10,065,789	89%
Automotive	698,504	6%
Equipment	175,004	2%
Operating Expense	137,763	1%
Indirect Costs	170,118	2%
Total	11,247,178	100%

History of SRP Program Funds Available and Expended

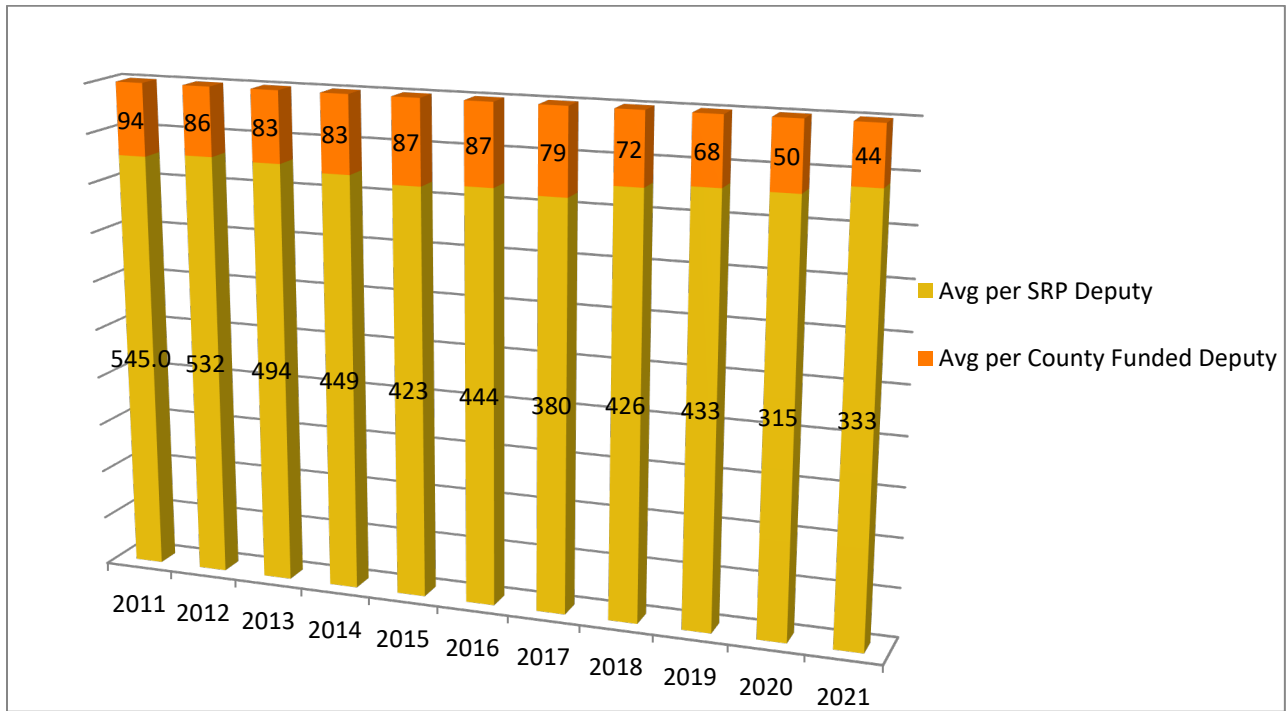
Fiscal Year	State Funds Available to Counties	State Funds Expended by Counties	County Contributions Expended
1979	8,700,000	7,363,066	8,000
1980	8,400,000	7,821,779	118,200
1981	6,293,700	5,771,668	107,900

SECONDARY ROAD PATROL

Fiscal Year	State Funds Available to Counties	State Funds Expended by Counties	County Contributions Expended
1982	6,275,000	6,236,537	108,600
1983	6,200,000	5,948,375	222,700
1984	6,500,000	6,302,485	280,900
1985	6,700,000	6,476,408	241,000
1986	7,100,000	6,847,170	209,200
1987	7,300,000	6,948,671	256,000
1988	7,424,000	7,087,056	301,400
1989	7,423,900	7,070,364	661,500
1990	7,239,500	6,757,680	604,900
1991	6,507,800	6,058,307	857,400
1992	5,664,999	5,519,269	1,320,600
1993	6,204,340	6,173,778	1,237,700
1994	6,000,000	5,815,355	1,591,100
1995	7,200,000	6,984,916	1,284,500
1996	8,900,000	8,583,919	716,200
1997	9,400,000	9,101,059	887,100
1998	9,000,000	8,649,438	1,237,900
1999	11,500,000	10,739,979	818,500
2000	12,000,000	11,435,192	861,800
2001	13,500,000	12,766,294	721,500
2002	12,385,600	12,156,256	1,147,000
2003	12,385,600	12,063,463	1,478,000
2004	13,866,731	13,298,815	1,130,000
2005	13,872,000	13,586,872	1,458,000
2006	13,300,000	13,051,369	1,684,000
2007	13,800,000	13,031,927	1,721,000
2008	12,300,000	12,022,656	2,517,000
2009	11,236,000	10,690,221	3,009,000
2010	11,300,000	10,916,730	2,826,825
2011	10,000,000	9,925,373	3,538,500
2012	9,000,000	8,895,950	3,532,000
2013	9,000,000	8,897,319	3,430,066
2014	9,300,000	9,124,889	3,066,044
2015	9,300,000	9,027,012	3,090,226
2016	9,300,000	9,155,373	3,060,237
2017	9,300,000	8,969,228	3,142,932
2018	8,300,000	8,228,701	3,562,938
2019	9,500,000	9,171,342	3,293,798
2020	10,500,000	10,128,279	2,518,325
2021	7,780,000*	7,487,913	3,759,265

*This figure does not include \$2,700,000 that was appropriated by the Michigan Legislature late in FY 2021. That additional \$2.7 million was added to the FY 2022 state funds available to counties to allow counties adequate time to expend the full appropriation.

Average (Avg) Traffic Citations Per Deputy



Activity Averages per SRP Deputy

YEAR	TRAFFIC CRASH INVESTIGATIONS	OWI ARRESTS	MOTORIST ASSISTS	CRIMINAL ARRESTS	CRIMINAL REPORTS	LAW ENFORCEMENT ASSISTS
2011	80.7	9.5	35.9	44.5	94.7	129.9
2012	86.4	10.2	29.4	41.4	105.2	129.2
2013	99	9.3	28.7	52.3	113.3	133.0
2014	96	8.9	34.6	43.2	102.5	120.3
2015	95	8.8	34.6	44.3	108.2	141.8
2016	92	9.8	29.6	49.8	105.7	152.4
2017	94	10.8	32.4	52.0	108.4	157.8
2018	105.9	9.9	33.7	47.6	107.4	158.1
2019	114.2	11.1	32.0	45.1	107.9	168.1
2020	88.4	7.4	24.3	37.8	108.8	162.3
2021	84.7	6.8	21.6	36.4	118.4	148.0

2019 – 2020 Michigan Traffic Crash Facts

Statewide Summary: One Year Trends

	2018	2019	Percent of Change
Alcohol-Involved Crashes			
Fatal Crashes	266	303	13.9
Personal Injury Crashes	3,911	3,731	-4.6
Property Damage Crashes	5,610	5,044	-10.1
Total	9,787	9,078	-7.2
Fatal Crashes			
Had Been Drinking	266	303	13.9
Had Not Been Drinking/Not Known if Drinking	636	707	11.2
Persons in Crashes			
Killed	985	1,083	9.9
Injured	74,963	60,986	-18.6
Not Injured	508,740	372,855	-26.7
Unknown Injury	49,934	45,476	-8.9
Total	634,622	480,400	-24.3
Persons in Alcohol-Involved Crashes			
Killed	295	326	10.5
Injured	5,364	5,138	-4.2
Not Injured	11,393	9,907	-13.0
Unknown Injury	18,441	16,723	-9.3
Persons Injured by Gender			
Male	34,828	30,500	-12.4
Female	40,110	30,466	-24.0
Unknown Gender	25	20	-20.0
Total	74,963	60,986	-18.6
Persons Injured by Severity			
A Injury	5,629	5,433	-3.5
B Injury	19,598	17,179	-12.3
C Injury	49,736	38,374	-22.8
Total	74,963	60,986	-18.6
Persons Killed by Gender			
Male	687	769	11.9
Female	298	314	5.4
Total	985	1,083	9.9

(publications.michigantrafficcrashfacts.org/2020/MTCFVol1.pdf)

2021 SRP Summary from Semi-Annual Reports

County	Average Sworn Officers	Average County Funded Certified Road Patrol Officers	Average SRP Officers	Total Miles by SRP Officers	Total Miles by County Funded Officers	Total Stops by SRP Officers	Total Stops by County Funded Officers
Alcona	11.5	8.5	1	27,446	226,169	169	499
Alger	7	0	.2925	1,771	0	12	0
Allegan	56	40	3	101,299	769,248	5,756	10,612
Alpena	12.75	9.75	1	22,019	121,396	176	743
Antrim	17.75	15.5	.5	13,169	223,026	232	688
Arenac	15	9	1	21,689	113,075	805	2,895
Baraga	7	3.5	.37	10,920	35,896	160	246
Barry	31	14	1	20,514	312,796	517	1,052
Bay	43	43	3	29,579	383,796	1,176	5,781
Benzie	16	10	1	30,550	173,060	567	2,346
Berrien	140	65	2	39,193	715,506	1,314	5,399
Branch	14	10	1	26,850	224,360	1,283	1,483
Calhoun	78	35	2	10,028	120,304	940	6,460
Cass	32	17	1	24,384	340,177	544	1,229
Charlevoix	22	12	.5	18,765	207,876	276	2,521
Cheboygan	39.5	12.1	.9	19,195	256,507	143	1,681
Chippewa	22	6	2	71,480	236,969	638	1,197

County	Average Sworn Officers	Average County Funded Certified Road Patrol Officers	Average SRP Officers	Total Miles by SRP Officers	Total Miles by County Funded Officers	Total Stops by SRP Officers	Total Stops by County Funded Officers
Clare	22.25	14.75	.4625	18,112	348,928	703	3,353
Clinton	26	16	1	18,137	360,004	419	5,870
Crawford	21	13	1	13,799	145,286	505	1,928
Delta	18.25	13.25	1	47,940	64,393	1,010	1,155
Dickinson	14	8.4	1.6	10,813	45,820	305	606
Eaton	64	52.25	2	42,012	N/A	509	9,039
Emmet	27	16.5	1	25,486	211,240	652	1,705
Genesee	269	116.5	2	24,685	266,854	1,297	3,550
Gladwin	15.5	8.5	1	12,742	156,706	129	994
Gogebic	24	15.5	.27	9,495	158,423	144	1,244
Grand Traverse	67	52	1	21,635	878,824	1,426	7,582
Gratiot	30.5	24	2	49,143	366,510	627	4,834
Hillsdale	24	24	1	16,335	193,006	663	2,347
Houghton	16	14	2	32,755	117,103	316	614
Huron	28.75	13	.56	7,856	378,447	34	2,841
Ingham	77	38	2.625	59,862	451,507	819	4,602
Ionia	26	15.28	.72	21,938	194,190	399	1,592
Iosco	4	1.25	.175	13,491	18,092	380	14
Iron	8.75	6	1	19,602	68,728	183	133
Isabella	15	14	1	19,296	268,215	160	1,298

County	Average Sworn Officers	Average County Funded Certified Road Patrol Officers	Average SRP Officers	Total Miles by SRP Officers	Total Miles by County Funded Officers	Total Stops by SRP Officers	Total Stops by County Funded Officers
Jackson	45.5	42	1	29,507	548,721	1,042	6,404
Kalamazoo	162	40	1	22,470	582,782	593	3,659
Kalkaska	18.25	9.25	1	11,959	218,368	192	1,016
Kent	491	155	2.375	49,911	1,780,183	550	11,964
Keweenaw	6	5.5	.5	18,851	88,111	65	56
Lake	16.75	10.16	.34	5,704	147,713	121	1,266
Lapeer	81	44	1	27,128	542,938	1,011	11,755
Leelanau	20	13	1	29,391	322,716	354	3,100
Lenawee	36	24.25	1	19,513	471,746	956	4,992
Livingston	58	33	1	19,385	695,356	425	5,934
Luce	6	4	.4	12,579	54,927	180	547
Mackinac	15.5	8	.5	14,775	257,469	130	1,021
Macomb	272.75	169.5	3	26,298	691,000	1,908	17,073
Manistee	15.25	10.25	1	38,267	148,081	1,132	1,539
Marquette	24	11	2	34,011	127,445	529	511
Mason	24	23	1	28,410	528,054	390	4,626
Mecosta	22	16	1	21,034	278,781	493	2,240
Menominee	15	10	1	37,677	264,596	147	1,150
Midland	40	25	1.5	37,686	287,658	661	2,754
Missaukee	12	8	.4	22,689	198,007	278	1,684
Monroe	79	52	2	37,760	N/A	3,044	8,109

County	Average Sworn Officers	Average County Funded Certified Road Patrol Officers	Average SRP Officers	Total Miles by SRP Officers	Total Miles by County Funded Officers	Total Stops by SRP Officers	Total Stops by County Funded Officers
Montcalm	21.75	15.25	1	27,409	268,375	659	2,786
Montmorency	12.25	12.5	.39	20,252	203,603	71	925
Muskegon	110	46	2	55,415	734,324	334	2,004
Newaygo	25	16	1	25,615	324,216	154	4,150
Oakland	1025.75	348.5	4.75	100,233	N/ A	3,153	N/ A
Oceana	20	11	1	21,894	252,493	176	2,185
Ogemaw	12.75	12.25	1	16,606	86,156	567	763
Ontonagon	5.5	5.5	.5	27,406	97,059	32	287
Osceola	17	15	1	25,788	303,795	48	703
Oscoda	13.5	9.5	1	18,059	125,684	82	459
Otsego	10	9	1	9,874	117,596	98	2,162
Ottawa	145.5	63	2	29,914	679,832	1,258	6,001
Presque Isle	12	9.1	.9	19,384	75,574	132	204
Roscommon	18	17	1	25,503	363,283	447	5,325
Saginaw	58	35	1	12,496	649,504	333	4,393
St. Clair	79.75	51.75	1	15,766	N/ A	596	N/ A
St. Joseph	28.5	19.5	2	36,106	178,833	811	2,268
Sanilac	26	15.2475	.7475	17,753	361,880	626	4,313
Schoolcraft	8.5	1.69	.31	7,721	3,221	162	59
Shiawassee	14.25	12.75	1	24,083	125,793	1,200	378
Tuscola	44	14	.625	14,930	272,179	173	967

<i>County</i>	<i>Average Sworn Officers</i>	<i>Average County Funded Certified Road Patrol Officers</i>	<i>Average SRP Officers</i>	<i>Total Miles by SRP Officers</i>	<i>Total Miles by County Funded Officers</i>	<i>Total Stops by SRP Officers</i>	<i>Total Stops by County Funded Officers</i>
Van Buren	71	25	2	29,518	502,270	548	3,611
Washtenaw	148	94.5	1	25,380	1,512,652	411	19,234
Wayne	684	11	8.4	88,303	26,520	4,515	885
Wexford	24	17	1	14,562	0	132	0
Totals	5,457.5	2,386.5	106.6	2,228,960	24,651,930	56,307	255,595

County	Total Verbal by SRP Officers	Total Verbals by County Officers	Total Citations by SRP Officers	Total Citations by County Officers	Total Citations in County Parks	Non-Traffic Arrests in County Parks	Calls for Assistance in County Parks
Alcona	167	461	78	226	0	0	0
Alger	10	0	2	0	0	0	0
Allegan	2,061	8,697	4,431	3,973	0	0	0
Alpena	152	797	29	214	0	0	4
Antrim	210	665	50	106	0	0	0
Arenac	455	1,108	474	2,299	0	0	0
Baraga	186	260	15	39	0	0	0
Barry	336	986	395	257	0	0	0
Bay	805	4,295	371	1,486	0	0	0
Benzie	447	1,894	120	452	0	0	0
Berrien	732	5,221	1,011	1,967	0	0	0
Branch	722	0	1,605	489	0	0	0
Calhoun	210	701	774	3,048	0	0	0
Cass	483	935	171	360	4	0	0
Charlevoix	293	2,076	53	445	0	0	0
Cheboygan	48	1,819	114	320	0	0	0
Chippewa	6,131	831	182	377	0	0	0
Clare	397	2,216	338	900	0	0	0
Clinton	169	3,108	174	3,087	4	0	12
Crawford	230	1,308	284	902	0	0	0
Delta	704	673	199	303	0	0	6
Dickinson	229	459	72	149	0	0	0
Eaton	411	6,759	97	2,280	0	0	0

County	Total Verbals by SRP Officers	Total Verbals by County Officers	Total Citations by SRP Officers	Total Citations by County Officers	Total Citations in County Parks	Non-Traffic Arrests in County Parks	Calls for Assistance in County Parks
Emmet	583	1,696	54	199	0	0	0
Genesee	807	2,985	255	723	0	0	0
Gladwin	129	679	53	443	0	0	0
Gogebic	42	296	22	189	0	0	0
Grand Traverse	323	6,038	1,083	1,483	0	0	0
Gratiot	312	3,968	548	1,931	0	0	0
Hillsdale	376	1,983	287	364	0	0	0
Houghton	256	434	60	180	0	0	0
Huron	41	3,428	13	612	0	0	0
Ingham	420	3,553	388	1,531	2	0	0
Ionia	317	1,369	90	386	0	0	0
Iosco	365	8	35	10	0	0	0
Iron	150	114	33	19	0	0	0
Isabella	47	585	118	685	0	0	0
Jackson	613	4,732	486	1,624	0	0	0
Kalamazoo	192	3,535	506	1,705	0	0	0
Kalkaska	269	453	22	342	0	0	0
Kent	265	3,288	333	7,420	0	0	0
Keweenaw	56	47	9	9	0	0	0
Lake	102	837	102	688	0	0	0
Lapeer	1,057	4,865	181	611	0	0	0
Leelanau	317	2,492	60	811	0	0	0

County	Total Verbal by SRP Officers	Total Verbals by County Officers	Total Citations by SRP Officers	Total Citations by County Officers	Total Citations in County Parks	Non-Traffic Arrests in County Parks	Calls for Assistance in County Parks
Lenawee	288	3,037	1,119	1,917	0	0	0
Livingston	53	3,007	378	2,927	0	0	0
Luce	161	407	36	212	0	0	0
Mackinac	22	475	105	476	0	0	0
Macomb	825	493	3,184	7,649	0	0	3
Manistee	924	1,251	189	191	0	0	0
Marquette	421	448	310	194	0	0	0
Mason	308	5,751	32	719	0	0	0
Mecosta	490	1,753	209	685	0	0	0
Menominee	142	955	26	262	0	0	0
Midland	391	1,434	270	1,320	0	0	0
Missaukee	233	1,719	46	214	0	0	0
Monroe	188	N/A	1,079	2,768	0	0	0
Montcalm	473	2,487	208	360	0	0	0
Montmorency	50	715	21	185	0	0	0
Muskegon	168	669	208	1,334	0	0	1
Newaygo	120	3,140	47	995	0	0	1
Oakland	675	5,655	4,345	19,080	0	0	0
Oceana	143	1,819	47	288	0	0	0
Ogemaw	117	522	588	479	0	0	0
Ontonagon	47	244	4	54	0	1	2
Osceola	55	223	23	266	0	0	0
Oscoda	48	307	37	109	0	0	1

County	Total Verbal by SRP Officers	Total Verbals by County Officers	Total Citations by SRP Officers	Total Citations by County Officers	Total Citations in County Parks	Non-Traffic Arrests in County Parks	Calls for Assistance in County Parks
Otsego	136	1,414	20	1,831	0	0	0
Ottawa	331	3,009	1,321	3,861	2	0	0
Presque Isle	87	157	45	47	0	0	0
Roscommon	400	5,558	118	946	0	0	0
Saginaw	352	3,447	84	1,305	0	0	0
St. Clair	403	0	300	0	0	0	0
St. Joseph	180	1,185	862	1,287	0	0	0
Sanilac	540	4,206	106	474	0	0	0
Schoolcraft	97	45	33	18	0	0	0
Shiawassee	578	236	662	142	0	0	0
Tuscola	129	1,302	129	640	0	0	0
Van Buren	280	3,469	410	1,360	0	0	0
Washtenaw	16	15,362	472	4,725	0	0	0
Wayne	2,305	509	2,637	423	49	27	46
Wexford	94	0	60	0	0	0	0
Totals	34,897	169,064	35,547	105,387	61	28	82

County	Crashes on Trunk Lines	Crashes on Secondary Roads	Crashes in Villages or Cities	Fatal Crashes on Trunk Lines	Fatal Crashes on Secondary Roads	Fatal Crashes in Villages or Cities	OWI Arrests Involving Alcohol	OWI Arrests Involving Drugs	Total Open Container Arrests
Alcona	15	43	1	0	0	0	4	1	0
Alger	11	2	0	0	0	0	0	0	0
Allegan	83	170	0	6	2	0	59	4	20
Alpena	11	11	1	0	1	0	4	0	0
Antrim	20	40	0	4	0	0	13	3	7
Arenac	32	54	10	0	0	0	2	1	0
Baraga	11	6	0	0	0	0	7	1	1
Barry	33	92	0	0	0	0	5	0	1
Bay	93	92	7	0	1	1	1	0	0
Benzie	19	28	5	0	0	0	19	4	4
Berrien	17	73	3	0	1	0	29	0	7
Branch	1	110	1	0	0	0	0	0	0
Calhoun	16	128	5	2	6	2	6	1	0
Cass	54	107	3	4	0	0	7	0	0
Charlevoix	14	36	0	0	0	0	36	18	4
Cheboygan	18	25	0	0	0	0	0	0	0
Chippewa	23	30	0	0	0	1	9	10	0
Clare	5	10	1	0	7	0	5	0	2
Clinton	27	114	1	1	3	0	13	1	4
Crawford	30	34	6	0	0	0	7	2	3
Delta	19	17	4	0	0	0	18	2	2
Dickinson	12	13	0	0	0	0	5	8	0

County	Crashes on Trunk Lines	Crashes on Secondary Roads	Crashes in Villages or Cities	Fatal Crashes on Trunk Lines	Fatal Crashes on Secondary Roads	Fatal Crashes in Villages or Cities	OWI Arrests Involving Alcohol	OWI Arrests Involving Drugs	Total Open Container Arrests
Eaton	58	253	4	1	4	0	11	2	0
Emmet	39	88	3	0	0	0	22	9	5
Genesee	16	42	9	2	3	1	14	0	3
Gladwin	16	32	1	0	0	0	0	0	0
Gogebic	15	14	18	0	0	0	8	4	0
Grand Traverse	58	191	2	0	3	1	2	0	1
Gratiot	78	113	4	0	0	0	3	2	0
Hillsdale	55	145	0	0	4	0	1	1	0
Houghton	2	33	0	0	0	0	17	3	1
Huron	46	38	1	0	0	0	1	0	0
Ingham	141	200	11	5	9	1	14	2	4
Ionia	28	52	2	1	5	0	6	5	3
Iosco	0	3	0	0	0	0	0	0	0
Iron	40	33	4	0	0	0	1	0	0
Isabella	50	188	15	0	0	0	5	1	0
Jackson	18	228	1	0	5	0	1	1	0
Kalamazoo	9	149	3	0	1	0	8	1	0
Kalkaska	0	27	0	0	0	0	2	0	0
Kent	3	29	0	0	23	0	4	1	0
Keweenaw	5	5	0	0	0	0	4	0	0
Lake	3	5	0	0	0	0	1	0	0

County	Crashes on Trunk Lines	Crashes on Secondary Roads	Crashes in Villages or Cities	Fatal Crashes on Trunk Lines	Fatal Crashes on Secondary Roads	Fatal Crashes in Villages or Cities	OWI Arrests Involving Alcohol	OWI Arrests Involving Drugs	Total Open Container Arrests
Lapeer	9	58	0	0	50	0	5	4	3
Leelanau	10	48	0	1	1	0	3	0	0
Lenawee	11	18	0	0	0	0	8	0	0
Livingston	71	129	0	4	6	0	3	1	0
Luce	0	1	0	0	0	0	0	0	0
Mackinac	1	12	1	0	0	0	2	2	0
Macomb	64	155	54	5	7	2	16	5	3
Manistee	0	146	0	0	3	0	17	1	7
Marquette	40	34	0	0	0	0	17	1	6
Mason	26	44	0	2	1	0	7	0	0
Mecosta	23	124	2	0	0	0	2	2	0
Menominee	2	5	0	0	0	0	0	0	1
Midland	69	316	9	2	2	0	14	1	1
Missaukee	18	32	3	0	0	0	2	3	0
Monroe	4	131	0	5	9	0	6	0	1
Montcalm	2	62	0	0	0	0	3	1	0
Montmorency	111	122	6	0	0	0	30	6	0
Muskegon	87	158	3	0	4	0	2	4	1
Newaygo	14	46	0	0	0	0	4	0	0
Oakland	30	44	44	4	3	2	13	1	1
Oceana	10	39	2	1	1	0	4	0	2
Ogemaw	9	21	4	1	0	0	3	0	0

County	Crashes on Trunk Lines	Crashes on Secondary Roads	Crashes in Villages or Cities	Fatal Crashes on Trunk Lines	Fatal Crashes on Secondary Roads	Fatal Crashes in Villages or Cities	OWI Arrests Involving Alcohol	OWI Arrests Involving Drugs	Total Open Container Arrests
Ontonagon	16	2	2	0	0	0	0	0	0
Osceola	1	0	0	0	12	0	0	0	0
Oscoda	21	30	2	0	0	0	1	0	0
Otsego	10	5	0	0	0	0	0	0	2
Ottawa	71	197	13	8	15	1	1	0	0
Presque Isle	26	38	1	0	0	0	3	0	0
Roscommon	5	13	0	0	1	0	13	3	1
Saginaw	21	53	2	0	1	0	21	1	0
St. Clair	30	175	0	2	3	0	2	6	0
St. Joseph	191	216	17	0	1	0	1	0	0
Sanilac	55	104	1	1	1	1	0	0	0
Schoolcraft	0	2	0	0	0	1	0	0	0
Shiawassee	39	124	0	0	0	0	6	0	0
Tuscola	56	92	1	0	0	0	1	0	0
Van Buren	21	135	5	0	1	0	1	0	0
Washtenaw	0	118	0	0	10	0	1	0	0
Wayne	0	96	18	0	0	0	9	0	0
Wexford	11	39	0	0	0	0	4	0	2
Totals	2,429	6,287	316	62	210	14	599	130	103

County	Total Crime Reports Filed	Total Criminal Arrests	Total Motorist Assists	Total Law Enforcement Assists to Own Department	Total Law Enforcement Assists to Other Departments	Community Safety Training Sessions	Number of Citizens Attending Safety Sessions	Patrol Hours	Non- Patrol Hours
Alcona	421	29	5	424	27	0	0	999	716
Alger	14	3	3	5	23	0	0	3,325	29
Allegan	1,864	186	53	425	231	45	578	2,896	3,277
Alpena	27	8	23	45	34	0	0	768	1,178
Antrim	50	22	14	144	45	0	0	1,240	167
Arenac	73	72	13	88	7	0	0	990	935
Baraga	0	8	20	34	38	0	0	576	142
Barry	92	47	28	59	22	0	0	672	1,048
Bay	382	164	31	53	983	0	0	1,669	2,173
Benzie	80	43	48	285	102	0	0	1,254	786
Berrien	69	28	37	0	194	0	0	657	729
Branch	25	24	14	68	14	0	0	1,578	413
Calhoun	56	51	7	9	2	0	0	546	225
Cass	80	6	29	112	21	0	0	1,294	469
Charlevoix	23	57	45	71	154	0	0	1,066	546
Cheboygan	14	11	12	0	7	0	0	1,163	192
Chippewa	50	118	16	23	42	0	0	3,110	1,742
Clare	44	21	12	31	11	0	0	221	25
Clinton	40	31	32	130	110	0	0	712	927
Crawford	179	117	33	257	54	0	0	2,571	1,250
Delta	11	73	8	209	114	0	0	1,331	1,220

County	Total Crime Reports Filed	Total Criminal Arrests	Total Motorist Assists	Total Law Enforcement Assists to Own Department	Total Law Enforcement Assists to Other Departments	Community Safety Training Sessions	Number of Citizens Attending Safety Sessions	Patrol Hours	Non- Patrol Hours
Dickinson	81	48	1	32	30	0	0	774	575
Eaton	126	65	15	61	44	0	0	2,138	819
Emmet	91	89	10	113	36	0	0	1,230	946
Genesee	391	196	43	482	120	0	0	4,040	600
Gladwin	21	8	1	45	6	0	0	61	302
Gogebic	4	3	44	66	55	0	0	1,000	80
Grand Traverse	50	31	218	300	34	0	0	193	1,718
Gratiot	818	35	6	0	4	0	0	207	1,897
Hillsdale	3	16	2	130	34	2	74	927	663
Houghton	178	82	41	28	83	0	0	2,635	1,137
Huron	12	5	8	23	9	0	0	7,863	21,067
Ingham	112	37	86	930	240	5	0	2,816	2,686
Ionia	128	60	16	71	111	0	0	834	1,166
Iosco	2	2	11	8	15	0	0	684	187
Iron	18	11	33	181	80	0	0	885	0
Isabella	40	12	18	216	43	0	0	1,450	878
Jackson	180	109	46	210	76	0	0	1,171	670
Kalamazoo	114	25	31	73	14	0	0	1,135	297
Kalkaska	173	12	0	119	1	1	0	1,183	425
Kent	22	17	11	196	16	1	40	1,262	3,838

County	Total Crime Reports Filed	Total Criminal Arrests	Total Motorist Assists	Total Law Enforcement Assists to Own Department	Total Law Enforcement Assists to Other Departments	Community Safety Training Sessions	Number of Citizens Attending Safety Sessions	Patrol Hours	Non- Patrol Hours
Keweenaw	15	3	18	3	28	0	0	846	1,081
Lake	110	19	9	80	27	0	0	246	93
Lapeer	38	24	23	45	32	0	0	749	23
Leelanau	10	3	3	19	5	0	0	1,137	540
Lenawee	44	42	1	24	20	0	0	1,212	312
Livingston	95	29	75	94	10	1	20	951	913
Luce	9	3	7	5	14	0	0	616	71
Mackinac	51	19	6	43	12	0	0	919	223
Macomb	396	68	170	685	78	1	100	2,197	1,942
Manistee	697	229	15	35	53	0	0	1,704	277
Marquette	382	87	21	19	233	9	203	2,046	1,313
Mason	78	63	5	289	64	0	0	728	66
Mecosta	82	38	56	83	23	1	10	1,512	131
Menominee	164	3	5	11	57	0	0	1,213	606
Midland	218	12	34	616	52	6	650	2,011	876
Missaukee	209	67	15	44	44	0	0	1,193	510
Monroe	71	13	83	59	3	0	0	1,205	2,301
Montcalm	0	9	51	61	6	0	0	981	619
Montmorency	124	30	24	30	23	0	0	426	239
Muskegon	41	47	80	270	84	32	653	2,590	720
Newaygo	17	56	4	18	7	0	0	1,456	776

County	Total Crime Reports Filed	Total Criminal Arrests	Total Motorist Assists	Total Law Enforcement Assists to Own Department	Total Law Enforcement Assists to Other Departments	Community Safety Training Sessions	Number of Citizens Attending Safety Sessions	Patrol Hours	Non- Patrol Hours
Oakland	2	23	81	189	93	0	0	2,313	1,480
Oceana	318	37	17	106	70	0	0	811	886
Ogemaw	194	129	4	37	28	0	0	838	987
Ontonagon	12	6	4	16	13	0	0	487	61
Osceola	1	0	2	7	20	0	0	2,378	412
Oscoda	48	20	23	4	49	0	0	1,219	732
Otsego	48	25	10	95	52	0	0	257	958
Ottawa	117	32	132	64	5	4	1,632	1,608	2,526
Presque Isle	54	16	4	12	22	0	0	0	0
Roscommon	153	60	14	100	53	0	0	764	769
Saginaw	56	51	2	93	0	0	0	1,084	93
St. Clair	35	49	64	200	27	10	167	1,170	288
St. Joseph	1,554	9	0	0	34	0	0	2,295	2,209
Sanilac	7	12	0	179	5	0	0	762	496
Schoolcraft	1	2	7	0	19	0	0	542	81
Shiawassee	216	44	22	54	58	126	321	781	883
Tuscola	7	0	1	3	8	0	0	415	556
Van Buren	65	52	8	182	105	0	0	769	900
Washtenaw	27	8	0	0	0	3	7	503	959
Wayne	654	423	63	628	566	0	0	5,328	1,603
Wexford	43	32	14	93	34	0	0	698	383

<i>County</i>	<i>Total Crime Reports Filed</i>	<i>Total Criminal Arrests</i>	<i>Total Motorist Assists</i>	<i>Total Law Enforcement Assists to Own Department</i>	<i>Total Law Enforcement Assists to Other Departments</i>	<i>Community Safety Training Sessions</i>	<i>Number of Citizens Attending Safety Sessions</i>	<i>Patrol Hours</i>	<i>Non- Patrol Hours</i>
Totals	12,621	3,876	2,301	10,351	5,422	247	4,455	112,083	89,030

Information obtained from the Semi-Annual Reports submitted by the counties.