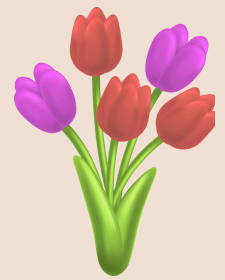


MVH CHESTERFIELD



April 2026 Wish List



Donations News

Whisper Glide Wheelchair-Accessible Swing

Join us in bringing accessible joy to the heart of MVH Chesterfield. The Whisper Glide Swing offers a unique therapeutic experience that enhances cognitive stimulation, physical activity, and psychosocial well-being for our members.

Benefits of the Whisper Glide include:

- Fully wheelchair accessible
- Encourages social interaction
- Helps reduce stress and anxiety
- Brings joy to multiple generations

We are working toward a fundraising goal of \$8,000. Your support and donation to the Charitable Support Fund can help make this meaningful project a reality.

Snack & Beverage Donation

Variety of Chips, Honey Buns, Small Water Bottles, Variety of Pop (Coke, Diet Coke, Root Beer, Diet Pepsi, Pepsi, Orange) and Non-Alcoholic Beer

Website: www.michigan.gov/mvh

Facebook:

<https://www.facebook.com/MiVeteranHomesCT>



Make a Gift

Monetary Donations

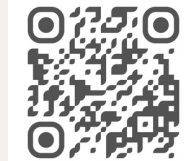
To make a monetary donation, checks can be made payable to MVHCT with memo CSF, and mailed to 47901 Sugarbush Rd., Chesterfield Township, MI 48047.

Charitable Support Fund

This fund is used to improve the quality of life for our members through experiences, community outings, therapeutic programming, purchasing tickets for outside events such as sporting events, movie tickets, and much more.

Direct Ship from Amazon

<https://a.co/05HqAxVH>



Sponsor an Event

If you or your organization would like to sponsor an event like bingo, entertainment, or a social outing for our members, please contact Samantha at BrooksS26@michigan.gov or call 586.210.7129.

Donations

ITEMS NEEDED: Men's Sweatpants: Size XL-4XL

At this time, we are unable to accept: books, puzzles, hats, socks, gloves, greeting cards, calendars, blankets of any size, clothing protectors, used clothing, medical equipment or supplies.

For questions or to coordinate a donation drop-off, please call Hilary at 586.256.9921 or email her at KuretichH@michigan.gov.