

**February
2022**

STATUS REPORT

FEBRUARY 2022

**MI Tri-Share Child
Care Pilot**



MI Tri-Share
CHILD CARE



**MICHIGAN WOMEN'S
COMMISSION**



TABLE OF CONTENTS

03 About Tri-Share & Implementation

04 Enrollment

05 Updates

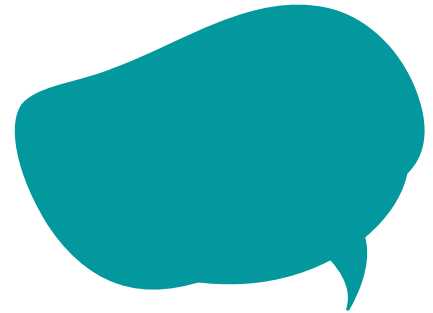
06 Outreach and Press



ABOUT TRI-SHARE

The MI Tri-Share Pilot (**Tri-Share**) is an **innovative** public/private partnership that equally **shares the cost of child care** between employers, employees, and the state of Michigan.

IMPLEMENTATION



- **Tri-Share is growing!**

- Last week, Governor Whitmer announced the expansion of Tri-Share to cover 33 more counties. This brings the total number of counties served under Tri-Share to 57 counties and the City of Detroit - which is more than half the state! Read more [here](#).
- [Visit our website](#) to see a list of participating counties and employers. There, you can also find the contact information for Hub facilitators in your region.



ENROLLMENT STATUS

- Since last month, five new employers have enrolled in Tri-Share. There are now **32 employers enrolled across three Hubs**.
- Enrolled **employers vary in size** from small (e.g., Skilled Manufacturing, Cherry Republic) to big businesses (e.g., Goodwill Industries).
- Current enrolled employers represent **various industries**, including social assistance, agriculture, manufacturing, arts, and social and civil service orgs.
- Hubs are actively recruiting employees from participating employers. Currently there are 29 employees enrolled across three Hubs.
- Enrolled employees are receiving support for full and part-time child care as well as before and after school care for 27 children. Children range between the ages of 6 months to 8 years old.

UPDATES



- Seven new Hubs have been onboarded and will begin recruiting employers and employees to participate in Tri-Share!
- MWC has partnered with the W.K. Kellogg Foundation to fund two new pilot regions as facilitator Hubs in Detroit and Battle Creek. [Click here for a press release](#) announcing this partnership!
- The Tri-Share grant period has been extended from March 15, 2021 to December 31, 2022!

Want to learn more?

Check out our updated website where you can find more info on Tri-Share here - michigan.gov/tri-share

OUTREACH AND PRESS



There has been continued outreach with stakeholders to contribute to collaboration. This includes (but is not limited to):

- Tri-Share admin Team is working with external evaluator to begin an assessment of Tri-Share.
- Seven New Hubs have been onboarded and are actively recruiting employers!

- Press

New

- *Gov. Whitmer announces new MI Tri-Share Child Care Pilot Program expansion*
- *Whitmer's expanded MI Tri-Share Child Care program to include Branch and Hillsdale counties*
- *Michigan Tries a Way of Easing More Parents Back into the Labor Pool*
- *MARESA, NMU Address Child Care Shortage*
- *Child care program dividing cost between employers, parents and government now covers most of Michigan*
- *St. Clair County RESA awarded \$300,000 to help parents pay for child care*
- *Montmorency County part of new child care hub*



- *MI Tri-Share Child Care program to add 7 new facilitator hubs, including one in Kalamazoo County*
- *Childcare pilot program expands in northern Michigan*
- *MI Tri-Share Child Care Pilot Program expanded to seven new regions*
- *Battle Creek Shared Services Alliance becomes hub for childcare program that splits costs three ways*
- *MI Tri-Share Child Care Pilot Program Expands to St. Clair County*
- *MARESA new hub in child care program*
- *Momentum continues on child care in Northeast Michigan*
- *Governor Whitmer Announces Expanded Child Care Initiative*
- *Michigan Pilot Program Attempts to Close Child-Care Gaps*
- *Pilot grant helps parents, employers deal with 'critical' child care crisis*

Previous

- *Opinion: Innovative child care programs fill important gaps*
- *Pennies From Heaven, United Way hosting meeting on new child care program*
- *Child care program promoted at meeting*

- *Program to help workers afford child care coming to the lakeshore*
- *Michigan's First of Its Kind Program Shares Child Care Costs Between the State, Employers and Employees*
- *As crisis escalates, Battle Creek is changing the narrative around child care*
- *Pilot Program Launches To Improve Child Care Affordability*
- *State expands regional child care program*
- *Pilot program aims to help hotel workers with child care*
- *Hotel workers can take part in pilot program for child care*
- *Pilot program cuts down child care bills for some Michigan families*
- *Opinion: Parents, employers and Michigan split cost of child care? You bet!*
- *A lack of affordable child care is keeping some Michigan parents out of the workforce, a pilot program aims to fix that*
- *Gratiot-Isabella RESD first in region to split employee child care costs through new state program*
- *A new program is helping Great Lakes Bay Region families cover child-care expenses*