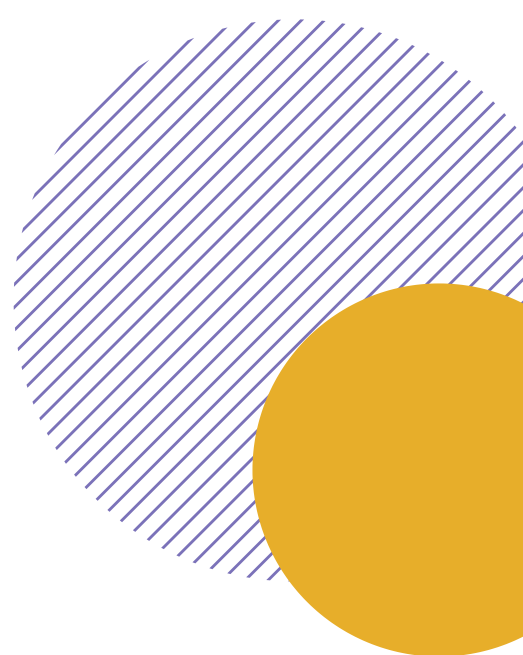


**October
2021**

STATUS REPORT

OCTOBER 2021

**MI Tri-Share Child
Care Pilot**



MI Tri-Share
CHILD CARE



**MICHIGAN WOMEN'S
COMMISSION**



TABLE OF CONTENTS

03 About Tri-Share & Implementation

04 Enrollment

05 Updates

07 Outreach and Press



ABOUT TRI-SHARE

The MI Tri-Share Pilot (**Tri-Share**) is an **innovative** public/private partnership that equally **shares the cost of child care** between employers, employees, and the state of Michigan.

IMPLEMENTATION



- **Outreach and marketing efforts** have continued across all pilot regions. Some pilot regions are working on outreach videos to serve as informational tools for employers and employees.

- Impact of Tri-Share

A prospective employee sought guidance from a Hub to ask whether two potential employers were participating in Tri-Share, in order to base her choice on the participating employer.

- Comment from participating employee:

"So far, I love it! I'm very appreciative for the opportunity to be apart of this program."



ENROLLMENT STATUS

- Since last month, four new employers have enrolled in Tri-Share. There are now **20 employers enrolled across all Hubs.**
- Enrolled **employers vary in size** from small (e.g., Skilled Manufacturing, Cherry Republic) to big businesses (e.g., Goodwill Industries).
- Current enrolled employers represent **various industries**, including social assistance, agriculture, manufacturing, arts, and social and civil service orgs.
- Hubs are actively recruiting employees from participating employers. Currently there are 8 employees (9 children) enrolled across all Hubs receiving support for full and part-time care. Children range between the ages of 2-3 years old.

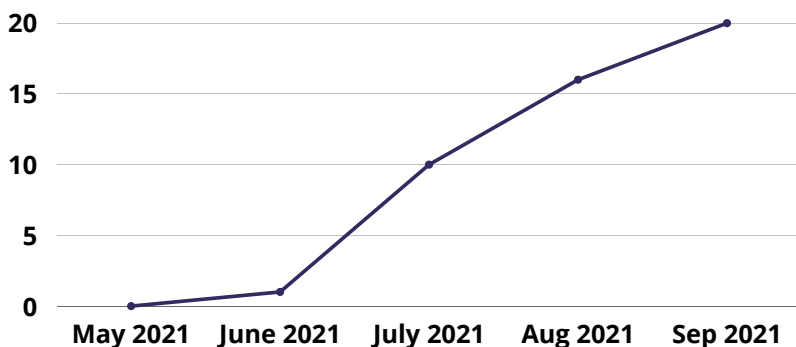


Figure 1. Participating employers over time.

UPDATES



- In case you missed it, Tri-Share was awarded an additional \$2.5 million in the FY2022 Michigan budget to continue and expand the project and add four new regions in FY 2022.
- Due to the additional State of Michigan funds, the current pilot regions will expand to include 10 more counties, for a total of 24 counties being served by the Tri-Share pilot program.
- MWC has also partnered with the W.K. Kellogg Foundation to fund two new pilot regions in Detroit and Battle Creek.
- The Michigan Women's Commission (MWC) has released a request for proposals (RFP) to fund four more pilot regions. The RFP and more information can be found here - <https://www.michigan.gov/Tri-Share>
- The MWC will launch the four new pilot regions along with the two W.K. Kellogg Foundation funded pilots in December 2021. This will bring the total pilot regions from three to nine.

UPDATES



- Due to an expansion in eligibility for CDC subsidy, Tri-Share has expanded its eligibility criteria to employees with household income of 186-285% of the federal poverty level (FPL).

Want to learn more?

Check out our updated website where you can find more info on Tri-Share here - michigan.gov/Tri-Share

OUTREACH AND PRESS



There has been continued outreach with stakeholders to contribute to collaboration. This includes (but is not limited to):

- MWC is partnering with the MI Coalition Against Homelessness for a webinar on MI women in the workforce and Tri-Share on Nov. 8th.
- MWC talked about Tri-Share with the Ann Arbor Chamber of Commerce in October.
- Continued collaboration with the Grand Rapids Chamber of Commerce and the Chamber's coalition partners.
- Press
 - *Michigan's First of Its Kind Program Shares Child Care Costs Between the State, Employers and Employees*
 - *As crisis escalates, Battle Creek is changing the narrative around child care*
 - *Pilot Program Launches To Improve Child Care Affordability*
 - *State expands regional child care program*
 - *Pilot program aims to help hotel workers with child care*



- Hotel workers can take part in pilot program for child care
- Pilot program cuts down child care bills for some Michigan families
- Opinion: Parents, employers and Michigan split cost of child care? You bet!
- A lack of affordable child care is keeping some Michigan parents out of the workforce, a pilot program aims to fix that
- Gratiot-Isabella RESD first in region to split employee child care costs through new state program
- A new program is helping Great Lakes Bay Region families cover child-care expenses